

PLUMBING SPECIFICATIONS

1.00- GENERAL PROVISIONS

1.01 PROVIDE ALL LABOR, MATERIAL AND EQUIPMENT FOR A COMPLETE AND PROPERLY OPERATING PLUMBING SYSTEM.

1.02 CODES AND STANDARDS: ALL PLUMBING WORK SHALL BE IN STRICT COMPLIANCE WITH THE 2020 FLORIDA PLUMBING CODE AND ALL LOCAL CODES HAVING JURISDICTION.

1.03 ALL PLUMBING WORK SHALL BE DONE IN A NEAT AND WORKMANLIKE MANNER. CONTRACTOR SHALL SECURE AND PAY FOR ALL PERMITS AND FEES, ETC., REQUIRED FOR THE EXECUTION OF THIS WORK.

1.04 CONTRACTOR SHALL COORDINATE HIS WORK WITH ALL OTHER TRADES BEFORE FABRICATION OR INSTALLATION. OFFSETS AND/OR TRANSITIONS REQUIRED SHALL BE PROVIDED WITHOUT ADDITIONAL COST. CONTRACTOR SHALL COORDINATE AND INSTALL HIS WORK IN A TIMELY MANNER TO PREVENT DELAYS IN THE CONSTRUCTION.

1.05 CONTRACTOR SHALL BE RESPONSIBLE TO REPAIR OR REPLACE DAMAGED EQUIPMENT AND/OR MATERIAL.

1.06 PROVIDE ALL MATERIALS REQUIRED TO PROPERLY SUPPORT ALL PIPING AND EQUIPMENT. PIPE HANGERS SHALL BE ADJUSTABLE TYPE AND BE SPACED IN ACCORDANCE WITH THE FLORIDA PLUMBING CODE. PROVIDED PLASTIC COATED RING OR HANGERS FOR COPPER PIPING TO PROVIDE DIELECTRIC ISOLATION.

1.07 PROVIDE DIELECTRIC UNIONS OR FLANGES BETWEEN COPPER AND STEEL PIPING AND BETWEEN BRASSWARE AND STEEL. DO NOT USE STEEL AND COPPER PIPING IN THE SAME SYSTEM WITHOUT SUCH ISOLATION.

1.08 PROVIDE REDUCING FITTINGS (REDUCING BUSHINGS SHALL NOT BE USED) WHERE CHANGES IN PIPE SIZES OCCUR.

1.09 THIS CONTRACTOR SHALL SUPPLY AND INSTALL ALL SERVICES THROUGHOUT THE BUILDING AND MAKE CONNECTION TO SITE UTILITIES APPROXIMATELY 5'-0" OUTSIDE THE BUILDING. CONTRACTOR SHALL SUPPLY AND INSTALL FIXTURES, FITTINGS, VALVING AND TRIM AND MAKE READY FOR USE ALL FIXTURES, EQUIPMENT, ETC.

1.10 SEE ARCHITECTURAL DRAWINGS FOR FIXTURE LOCATIONS AND MOUNTING HEIGHTS.

2.00- BASIC MATERIALS AND METHODS

2.01 DOMESTIC WATER - ABOVEGROUND WATER PIPE AND FITTINGS - TYPE "1" COPPER.

2.02 PROVIDE UNIONS OR FLANGES IN ALL DOMESTIC WATER SERVICE LINES AT EACH PIECE OF EQUIPMENT, SPECIALTY VALVES OR AT OTHER LOCATIONS REQUIRED FOR READY DISCONNECT.

2.03 WATER HAMMER ARRESTORS SHALL BE INSTALLED AT THE LOCATIONS ON THE PLANS AND IN ACCORDANCE WITH FDI STANDARD WH-201. PRODUCTS SHALL BE EQUAL TO THOSE MANUFACTURED BY PRECISION PLUMBING PRODUCTS OR SIOUX CHIEF.

2.04 VALVES: PROVIDE VALVES TO ISOLATE EACH RISER, BRANCH LINE AND PIECE OF EQUIPMENT.

2.05 PROVIDE PRESSURE REDUCING VALVE AND AIR GAP CONNECTION AT DISHWASHER AS REQUIRED BY CODE AND ACCORDING TO MANUFACTURER.

2.06 PROVIDE INLINE WATER FILTER AT COFFEE MAKER AND ICE MAKER TO REMOVE MATERIALS, TASTE AND OODOR - "EVERPURE OR "SYSTEMS IV".

2.07 SANITARY WASTE (NON-PRESSURE), SANITARY VENT AND STORM PIPING - ABOVE GROUND - NO-HUB CAST IRON SOIL PIPE AND FITTINGS PER CISPI 301 WITH HEAVY DUTY SHELDED STAINLESS STEEL COUPLINGS.

2.08 CONDENSATE PIPING - DWV COPPER OR NO-HUB CAST IRON SOIL PIPE AND FITTINGS PER CISPI 301 WITH HEAVY DUTY SHELDED STAINLESS STEEL COUPLINGS.

2.09 INSTALL GRAVITY LINES SLOPED AT 1/8" PER FOOT FOR PIPE 3" AND LARGER AND 1/4" PER FOOT FOR PIPE SMALLER THAN 3". VERIFY INVERT ELEVATION WITH EXISTING PIPING PRIOR TO ANY PIPE BEING INSTALLED.

2.10 PROVIDE AND PROPERLY LOCATE HANGERS TO ADEQUATELY SUPPORT PIPING. ARRANGE HANGERS TO PERMIT EXPANSION AND CONTRACTION. DO NOT HANG PIPING FROM FIRE OR SMOKE WALLS. PROVIDE PIPE HANGERS AT EACH VALVE, STRAINER, AND OTHER PIPING ACCESSORY, AND AT EACH CHANGE OR DIRECTION.

2.11 THE SIZE OF HANGERS FOR NON-INSULATED PIPES SHALL BE SUITABLE FOR THE PIPE SIZE TO BE SUPPORTED. FOR INSULATED PIPING, THE SIZE OF THE HANGER SHALL BE SUITABLE FOR THE PIPE SIZE, PLUS THE INSULATION AND INSULATION SHIELD.

2.12 SPACING: LOCATE PIPE SUPPORTS AS INDICATED IN THE FOLLOWING TABLE:

HORIZONTAL PIPE HANGER SCHEDULE		
MATERIAL	PIPE SIZE	HANGER SPACING
COPPER TUBING	UP TO 1 1/4 INCH 1 1/2 INCH AND ABOVE	6 FOOT CENTERS 10 FOOT CENTERS
CAST IRON PIPE	ALL	5 FOOT CENTERS

3.00- PLUMBING FIXTURES AND TRIM

3.01 ALL PLUMBING FIXTURES SHALL BE "FIRST QUALITY" AS DEFINED AND SET FORTH IN COMMERCIAL STANDARD C577-28 AS PROMULGATED BY THE U.S. DEPARTMENT OF COMMERCE.

3.02 ALL FIXTURES ARE TO BE WHITE VITREOUS CHINA UNLESS OTHERWISE SPECIFICALLY NOTED. FIXTURES AND FITTINGS PROPOSED SHALL BE FROM ONE MANUFACTURER AND OF SIMILAR CHARACTER IN ANY ROOM OR LOCATION. ESCUTCHEONS, HANDLES, ETC., ON THE DIFFERENT FIXTURES SHALL BE OF THE SAME DESIGN.

3.03 PROVIDE FIXTURE CARRIERS AS RECOMMENDED BY FIXTURE MANUFACTURER AND/OR CONSTRUCTION METHOD.

3.04 PROVIDE ACCESS PANELS TO ALL VALVES WITH CHASES OR ABOVE NON-ACCESSIBLE CEILINGS. REFER TO ARCHITECTURAL DRAWINGS FOR CEILING TYPES.

3.05 FLOOR DRAIN TRAP SEALS SHALL HAVE AN APPROVED PRIMING DEVICE DESIGNED FOR THAT PURPOSE.

3.06 ALL CONCEALED TRAPS, PRIMERS, VALVES, CLEANOUTS, ETC. LOCATED IN TILED AREAS SHALL BE PROVIDED WITH AN ACCESS PANEL.

4.00- INSULATION

4.01 ABOVE GROUND COLD AND HOT WATER PIPING - FIBERGLASS, 1" THICKNESS, ASJ JACKET, DOUBLE SEALING LAP JOINT, 0.24 K AT 75°F. INSULATION AND ADHESIVES INSTALLED IN RETURN AIR PLenums SHALL HAVE A MAXIMUM FLAME SPREAD RATING OF 25 AND A MAXIMUM SMOKE DEVELOPED RATING OF 50.

4.02 ABOVEGROUND CONDENSATE PIPING SHALL BE 1/2" FLEXIBLE UNICELLULAR POLYOLEFIN FOAM AND SHALL HAVE A MAXIMUM FLAME SPREAD RATING OF 25 AND A MAXIMUM SMOKE DEVELOPED RATING OF 50-IMCOA "MOCLOCK".

5.00- VALVES AND COCKS

5.01 VALVES 2" AND SMALLER SHALL BE BALL VALVES, 150 PSI SWP, 400 PSI WOG, STANDARD PORT BALL, BRONZE TRIM, CAST BRONZE BODY, CHROMIUM PLATED BRASS BALL, BRONZE NON-BLOWOUT STEM, TEFLOON SEAT, DOUBLE O-RING STEM SEALS, ZINC-COATED STEEL HANDLE WITH PLASTIC COATED HANDLE GRIP, 90 DEGREE OPERATION FROM FULL OPEN TO TIGHT SHUT-OFF - STOCKHAM SZ14-BR-T-T, STOCKHAM SZ16-BR-T-S OR EQUAL.

5.02 CHECK VALVES, ROUGH BRASS, REGRINDING BRONZE DISC - STOCKHAM B-346, B-309 OR EQUAL.

6.00- STERILIZATION

6.01 DOMESTIC WATER PIPING SHALL BE THOROUGHLY FLUSHED OUT AND STERILIZED IN ACCORDANCE WITH THE FLORIDA PLUMBING CODE.

PLUMBING SYMBOL LEGEND		PLUMBING ABBREVIATIONS	
SYMBOL	DESCRIPTION	SYMBOL	DESCRIPTION
	- DOMESTIC COLD WATER	A	- MEDICAL AIR
	- DOMESTIC HOT WATER	AFF	- ABOVE FINISH FLOOR
	- DOMESTIC HOT WATER RETURN	CD	- CONDENSATE DRAIN
	- OXYGEN	CFH	- CUBIC FEET PER HOUR
	- MEDICAL AIR	CO	- CLEANOUT
	- MEDICAL VACUUM	CW	- DOMESTIC COLD WATER
	- ABOVE GROUND SANITARY WASTE	DN	- DOWN
	- BELOW GROUND SANITARY WASTE	DNG	- DRAINING
	- SANITARY VENT	EX	- EXISTING
	- EXISTING PIPE	F	- DEGREE FAHRENHEIT
	- CLEAN OUT PLUG	FCO	- FLOOR CLEANOUT
	- WALL CLEANOUT	FD	- FLOOR DRAIN
	- SHUT OFF VALVE	HW	- DOMESTIC HOT WATER
	- BALL VALVE	HWR	- DOMESTIC HOT WATER RECIRCULATING
	- CALIBRATED BALANCING VALVE	NTS	- NOT TO SCALE
	- CONNECTION, TOP	OZ	- OXYGEN
	- CONNECTION, BOTTOM	SAN	- SANITARY
	- ELBOW, TURNED DOWN	V	- VENT
	- TEE, TURNED UP	MV	- MEDICAL VACUUM
	- TEE, TURNED DOWN	VAC	- VACUUM
	- CAP	VTR	- VENT THRU ROOF
	- DIRECTION OF FLOW	MGAP	- MEDICAL GAS ALARM PANEL
	- CONNECT TO	ZVB	- ZONE VALVE BOX
	- DEMO TO		
	- DETAIL REFERENCE		
	- REVISION REFERENCE		

NOTE: SOME SYMBOLS SHOWN ON THIS LEGEND MAY NOT PERTAIN TO THIS PROJECT

PLUMBING GENERAL NOTES

1. REFERENCE THE SPECIFICATIONS FOR MATERIAL AND EQUIPMENT INSTALLATION STANDARDS.
2. THE PLUMBING INSTALLATION SHALL COMPLY WITH ALL INTERNATIONAL, STATE AND LOCAL CODES.
3. UTILITIES AND SERVICES INDICATED ARE TAKEN FROM VARIOUS OLD AND NEW SURVEYS, AS-BUILT RECORDS AND FIELD INVESTIGATIONS. UNFORSEEN CONDITIONS PROBABLY EXIST AND NEW WORK MAY NOT BE FIELD LOCATED EXACTLY AS SHOWN ON DRAWINGS. COOPERATION WITH OTHER TRADES IN ROUTINGS AND BURIAL DEPTHS, AS DETERMINED DURING CONSTRUCTION, WILL BE NECESSARY.
4. FIELD VERIFY EXISTING INSTALLATIONS, MODIFY EXISTING PLUMBING SYSTEMS, WHICH ARE TO REMAIN ACTIVE, TO FACILITATE RECONNECTION AND EXTENSION OF THE NEW WORK.
5. NOTIFY OWNER AT LEAST 24 HOURS PRIOR TO INTERRUPTING EXISTING SERVICE. SCHEDULE DISCONNECTION AND TIE-INS TO MINIMIZE DISRUPTION OF SERVICES. SERVICES ARE NOT TO BE LEFT DISRUPTED DURING NON-NORMAL CONTRACTOR WORKING HOURS.
6. PLANS ARE NOT COMPLETELY TO SCALE. PIPE ROUTING SHOWN IS SCHEMATIC AND IS NOT INTENDED TO INDICATE EXACT ROUTING. CONTRACTOR SHALL PROVIDE ANY ADDITIONAL OFFSETS AND FITTINGS REQUIRED FOR PROPER INSTALLATION AND TO MAINTAIN CLEARANCES. VERIFY STRUCTURAL, MECHANICAL AND ELECTRICAL INSTALLATIONS AND OTHER POTENTIAL OBSTRUCTIONS AND ROUTE PIPING TO AVOID INTERFERENCES.
7. PROVIDE ALL OFFSETS AND FITTINGS AND MAKE CONNECTION TO SITE UTILITIES.
8. CONCEAL PIPING ABOVE CEILINGS, WITHIN WALLS OR CHASES EXCEPT MECHANICAL ROOMS OR AS SPECIFICALLY NOTED.
9. PROVIDE ACCESS PANELS FOR ALL VALVES CONCEALED IN WALLS OR ABOVE NON-ACCESSIBLE CEILINGS.
10. SLEEVE AND/OR FIRESTOP ALL PENETRATIONS THROUGH RATED WALLS, CEILINGS, AND FLOORS WITH UL LISTED ASSEMBLIES. FIRESTOP ASSEMBLIES SHALL BE EQUAL TO OR EXCEED THE RATING OF THE WALL, CEILING OR FLOOR. SEE ARCHITECTURAL DRAWINGS FOR FINAL FINISHES.
11. FLASH AND COUNTER-FLASH ROOF PENETRATIONS.
12. WHEN BEAM SLEEVE PENETRATIONS ARE NECESSARY, COORDINATE PENETRATIONS WITH ALL TRADES, THE ARCHITECT AND THE STRUCTURAL ENGINEER.
13. PROVIDE FOUNDATION PAD PENETRATION SLEEVES. ALLOW 1" MINIMUM CLEARANCE BETWEEN SLEEVE INSIDE SURFACE AND PIPE EXTERIOR.
14. SEE ARCHITECTURAL DRAWINGS FOR FIXTURE LOCATIONS AND MOUNTING HEIGHTS.
15. PROVIDE AUTOMATIC TRAP PRIMERS FOR FLOOR DRAIN TRAP SEALS.
16. PROVIDE AN AIR GAP WHEN REQUIRED BY CODE, SERVING INDIVIDUAL FIXTURES, DEVICES, APPLIANCES AND APPARATUS.
17. ALL EXPOSED PIPE AND FITTINGS IN FINISHED AREAS SHALL BE CHROME PLATED.
18. MOUNT WALL HYDRANTS 24" ABOVE FINISHED GRADE UNLESS SPECIFICALLY NOTED OTHERWISE ON DRAWINGS. MOUNT HOSE BIBBS 24" ABOVE FINISHED FLOOR UNLESS SPECIFICALLY NOTED OTHERWISE.
19. PROVIDE CLEANOUTS IN ACCORDANCE WITH ALL STATE AND LOCAL CODES. INSTALL CLEANOUT WITH COVER FLUSH TO FINISH SURFACE.
20. COORDINATE EXACT FLOOR DRAIN LOCATIONS WITH ARCHITECTURAL DRAWINGS. SET FLOOR DRAINS BELOW FINISHED FLOOR TO ALLOW FOR FLOOR SLOPING TO THE DRAIN.
21. COORDINATE PIPING WITH ALL ELECTRICAL EQUIPMENT (PANELS, TRANSFORMERS, ETC.) PRIOR TO ANY INSTALLATION. DO NOT ROUTE ANY PIPING OVER ANY ELECTRICAL PANELS UNDER ANY CIRCUMSTANCES. ANY PIPING RUN OVER PANELS SHALL BE RE-ROUTED AT NO ADDITIONAL COST.
22. PROVIDE SANITARY WASTE, VENT, DOMESTIC WATER, ETC. ROUGH-IN AND MAKE FINAL CONNECTIONS (TO INCLUDE PROVIDING ALL NECESSARY RELATED STOPS, VALVES, TRAPS, ETC. AND MAKE READY FOR USE) TO ALL EQUIPMENT, WHETHER FURNISHED BY THIS CONTRACTOR OR FURNISHED BY OTHERS.
23. NSF-61-G COMPLIANCE: PRODUCTS IN CONTACT WITH DOMESTIC WATER FOR HUMAN CONSUMPTION SHALL MEET NSF-61-G AND CONTAIN LESS THAN 0.25% (WEIGHTED AVERAGE) OF LEAD. ALL PRODUCTS SHALL BE LABELED WITH THE CERTIFICATION MARK NSF-61-G.

PLUMBING DRAWING INDEX

SHEET	DESCRIPTION
PI.0	PLUMBING SYMBOLS, LEGEND, NOTES AND INDEX
P2.0	PLUMBING PRESSURE PLAN
P2.1	PLUMBING SANITARY PLAN
PI.0	PLUMBING DETAILS
PI.0	PLUMBING ISOMETRICS
PI.1	PLUMBING ISOMETRICS

ELECTRIC WATER HEATER SCHEDULE

MARK	MANUFACTURER	MODEL NO.	RECOVERY	EFF	ELECTRICAL			DIMENSIONS		SPECIFICATION / NOTES
					VOLT	PH	HERTZ	DIAMETER	HEIGHT	
EW-1	AO SMITH	ENT-SS	84 gph		240 V	1	60	24"	56-1/2"	6KW

DOMESTIC CIRCULATING PUMP SCHEDULE

MARK	MANUFACTURER	MODEL NO.	TYPE	PUMP		MOTOR			ELECTRICAL		NOTES
				DESIGN FLOW	HEAD	HP	RPM	VOLT	PH	HERTZ	
CP-1	TACO	0072	INLINE	50 GPM	14'	1/8	3250	115	1	60	

PLUMBING FIXTURE SCHEDULE

MARK	TYPE	FIXTURE		TRIM		FLOW RATE / FLUSH RATE / FLOW CYCLE	DESCRIPTION / SPECIFICATIONS
		MANUFACTURER	MODEL	MANUFACTURER	MODEL		
EW-C1	ELECTRIC WATER COOLER	ELKAY	LVRGCRNTLWSK	NA	NA	7.5 GPH	
FD-1	FLOOR DRAIN	WATTS	FD-1200-A				
L-1	SELF-RIMMING LAVATORY	AMERICAN STANDARD	0476.02B	DELTA COMMERCIAL	87T105	0.5 GPM	
MS-1	MOP SINK	WILLIAMS	SBC-1700-2-BP	T & S BRASS	B-0665-BSTP	2.5 GPM	
OB-1	ICE MAKER SUPPLY BOX	GLY GREY	MB1HA	NA	NA	NA	
OB-2	WASHING MACHINE SUPPLY AND DRAIN BOX	GLY GREY	MWB19	NA	NA	NA	
S-1	SELF-RIMMING SINK	ELKAY	DLR0221910-4	DELTA COMMERCIAL	28C3975-RT	1.5 GPM	
SH-1	SHOWER	AQUA BATH	IS6036SH	DELTA COMMERCIAL	T117H135	1.5 GPM	
WC-1	WATER CLOSET	AMERICAN STANDARD	215AA 104.020	NA	NA	1.28 GPF	
WH-1	WALL HYDRANT IN LOCKED BOX	WOODFORD	865	NA	NA	NA	

CLEANOUTS

GENERAL (ALL FLOOR CLEANOUTS): DURA-COATED CAST IRON CLEANOUT WITH MEMBRANE FLANGE WITH CADMIUM PLATED CAST IRON COUNTERSUNK PLUG. CLEANOUT CAN BE ADJUSTED TO FINISH FLOOR LEVEL AFTER CONCRETE HAS SET.

FLOOR: HEAVY DUTY ROUND SCORATED NICKEL BRONZE TOP

CARPETED FLOOR: HEAVY DUTY ROUND NICKEL BRONZE TOP RECESSED FOR CARPET.

TILE FLOOR: HEAVY DUTY ROUND NICKEL BRONZE TOP RECESSED FOR TILE.

EXTERIOR: HEAVY DUTY ROUND SCORATED NICKEL BRONZE TOP. PROVIDE WITH 18" X 4" THICK CONCRETE COLLAR, SEE DETAIL.

WALL: CAST IRON CLEANOUT TEE. CADMIUM PLATED CAST IRON COUNTERSUNK PLUG. SMOOTH SQUARE NICKEL BRONZE WALL ACCESS COVER AND FRAME.

PLUG: DURA-COATED CAST IRON FERRULE AND CADMIUM PLATED CAST IRON COUNTERSUNK PLUG.

BASIS OF DESIGN

FLOOR - ZURN - ZN1405
 CARPETED FLOOR - ZURN - ZN1405
 TILE FLOOR - ZURN - ZN1405
 EXTERIOR FLOOR - ZURN - ZN1405
 WALL - ZURN - Z1445
 PLUG - ZURN - Z1440



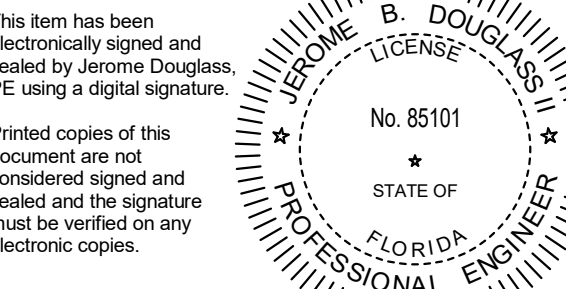
Architect's Design Team:
 Architect:
 Miller Architects, Inc.
 13401 N. Western Ave.
 Suite #302
 Oklahoma City, Oklahoma 73114
 P: 405.843.6656
 W: www.millerarch.com
 Interior Designer - Finisher:
 Miller Architects, Inc.
 Suite #302
 Oklahoma City, Oklahoma 73114
 P: 405.843.6656
 F: 405.843.8856
 W: www.millerarch.com
 STRUCTURAL ENGINEER:
 TLC ENGINEERING SOLUTIONS
 201 St. Charles Avenue
 Suite 4318
 New Orleans, LA 70170
 P: 504.777.0040
 W: www.tlc-eng.com
 MEP ENGINEER:
 TLC ENGINEERING SOLUTIONS
 201 St. Charles Avenue
 Suite 4318
 New Orleans, LA 70170
 P: 504.777.0040
 W: www.tlc-eng.com
 Owner's Design Team:
 CIVIL ENGINEER:
 MOORE BASIS CONSULTING
 901 N. Gadsden Street
 Tallahassee, Florida 32303
 P: 904.222.8816
 W: www.moorebasiss.com

Project:
REDEMPTION ORTHODONTICS (DR. VRACAR)

BRADFORDVILLE, FL

Owner's Representative:
 Trevor Hayes
 Ashton Gray
 12360 Market Drive
 Oklahoma City, OK 73114
 P: 405.260.4003
 W: www.ashtongray.com

Project Number: MAI#: 22032.0
 Seal:



Date: 05/31/2023
 Issue: 100% CONSTRUCTION DOCUMENTS

Revisions		
No.	Date	Description

Sheet Name:
 PLUMBING SYMBOLS, LEGEND, NOTES AND INDEX

Sheet Number:
P1.0

© Copyright 2022 Miller All Rights Reserved



NOTE:
 REFERENCE ATLANTA DENTAL PLANS FOR
 PIPING & EQUIPMENT SPECIFICATIONS
 FOR ATLANTA DENTAL EQUIPMENT INSTALLATION
 REQUIREMENTS.

KEYED NOTES
 1 ROUTE SERVICES UP TO ATLANTA DENTAL EQUIPMENT. TYPICAL OF ALL
 CHAIRS.

Miller

www.millerarch.com

ASHTONGRAY

Architect's Design Team:

Architect:
 Miller Architects, Inc.
 13401 N. Western Ave.
 Suite #302
 Oklahoma City, Oklahoma 73114
 P: 405.843.6656
 W: www.millerarch.com
 Interior Designer - Finishes:
 Miller Architects, Inc.
 Suite #302
 Oklahoma City, Oklahoma 73114
 P: 405.843.6656
 F: 405.843.3936
 W: www.millerarch.com

STRUCTURAL ENGINEER:
 TLC ENGINEERING
 SOLUTIONS
 201 St. Charles Avenue
 Suite 4318
 New Orleans, LA 70170
 p: 504.777.0040
 W: www.tlc-eng.com

MEP ENGINEER:
 TLC ENGINEERING
 SOLUTIONS
 201 St. Charles Avenue
 Suite 4318
 New Orleans, LA 70170
 p: 504.777.0040
 W: www.tlc-eng.com

Owner's Design Team:

CIVIL ENGINEER:
 MOORE BASSE
 CONSULTING
 801 N. Goodwin Street
 Tallahassee, Florida 32303
 p: 904.222.8818
 W: www.moorebasse.com

Project:
**REDEMPTION
 ORTHODONTICS
 (DR. VRACAR)**

BRADFORDVILLE, FL

Owner's Representative:

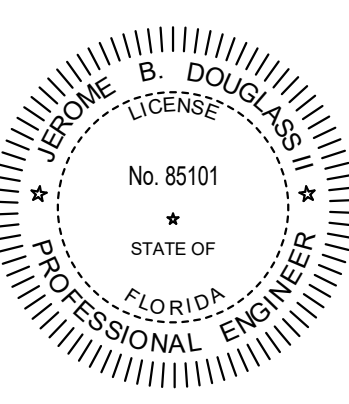
Trevor Hayes
 Ashton Gray
 12360 Market Drive
 Oklahoma City, OK 73114
 P: 405.300.4003
 W: www.ashtongray.com

Project Number: MAH: 22032.0

Seal:

This item has been
 electronically signed and
 sealed by Jerome Douglas,
 PE using a digital signature.

Printed copies of this
 document are not
 considered signed and
 sealed and the signature
 must be verified on any
 electronic copies.



Date: 05/31/2023

Issue: 100% CONSTRUCTION DOCUMENTS

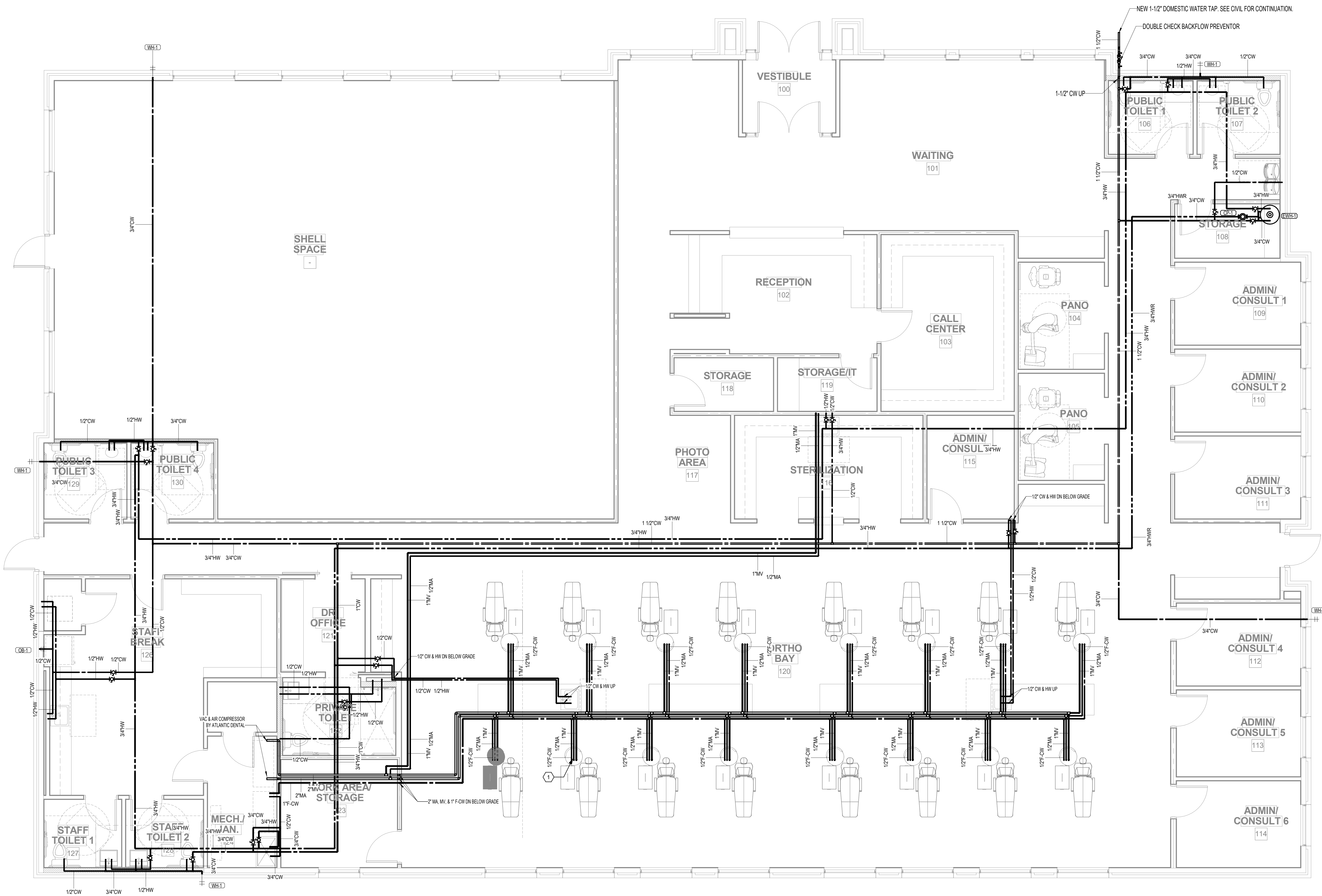
Revisions		
No.	Date	Description

Sheet Name:
 PLUMBING PRESSURE PLAN

Sheet Number:
P2.0

© Copyright 2022 Miller
 All Rights Reserved

**TLC ENGINEERING
 SOLUTIONS**
 201 St. Charles Avenue
 Suite 4318
 New Orleans, LA 70170
 P 504.777.0040
 E: 3319
 www.tlc-engineer.com
 TLC No. 722125
 Copyright 2023
 THINK. LISTEN. CREATE.



1 LEVEL 01 - PRESSURE
 1/4" = 1'-0"

12/9/2023 10:37:42 AM

NOTE:
 REFERENCE ATLANTA DENTAL PLANS FOR
 PIPING & EQUIPMENT SPECIFICATIONS
 FOR ATLANTA DENTAL EQUIPMENT INSTALLATION
 REQUIREMENTS.

Miller

www.millerarch.com

ASHTONGRAY

Architect's Design Team:

Architect:
 Miller Architects, Inc.
 13401 N. Western Ave.
 Suite #302
 Oklahoma City, Oklahoma 73114
 P: 405.843.6656
 W: www.millerarch.com

Interior Designer - Finishes:
 Miller Architects, Inc.
 Suite #302
 Oklahoma City, Oklahoma 73114
 P: 405.843.6656
 F: 405.843.8926
 W: www.millerarch.com

STRUCTURAL ENGINEER:
 T.L.C. ENGINEERING
 SOLUTIONS
 201 St. Charles Avenue
 Suite 4318
 New Orleans, LA 70170
 p: 504.777.0040
 W: www.tlc-eng.com

MEP ENGINEER:
 T.L.C. ENGINEERING
 SOLUTIONS
 201 St. Charles Avenue
 Suite 4318
 New Orleans, LA 70170
 p: 504.777.0040
 W: www.tlc-eng.com

Owner's Design Team:

CIVIL ENGINEER:
 MOORE BASSE
 CONSULTING
 800 N. Gadsden Street
 Tallahassee, Florida 32303
 p: 904.222.8818
 W: www.moorebasse.com

Project:

**REDEMPTION
 ORTHODONTICS
 (DR. VRACAR)**

BRADFORDVILLE, FL

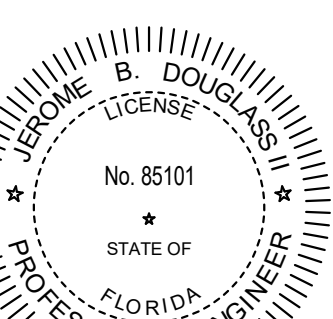
Owner's Representative:

Trevor Hayes
 Ashton Gray
 12360 Market Drive
 Oklahoma City, OK 73114
 P: 405.300.4003
 W: www.ashtongray.com

Project Number: MAI# 22032.0

Seal:

This item has been
 electronically signed and
 sealed by Jerome Douglas,
 PE using a digital signature.
 Printed copies of this
 document are not
 considered signed and
 sealed and the signature
 must be verified on any
 electronic copies.



Date: 05/31/2023

Issue: 100% CONSTRUCTION DOCUMENTS

Revisions		
No.	Date	Description

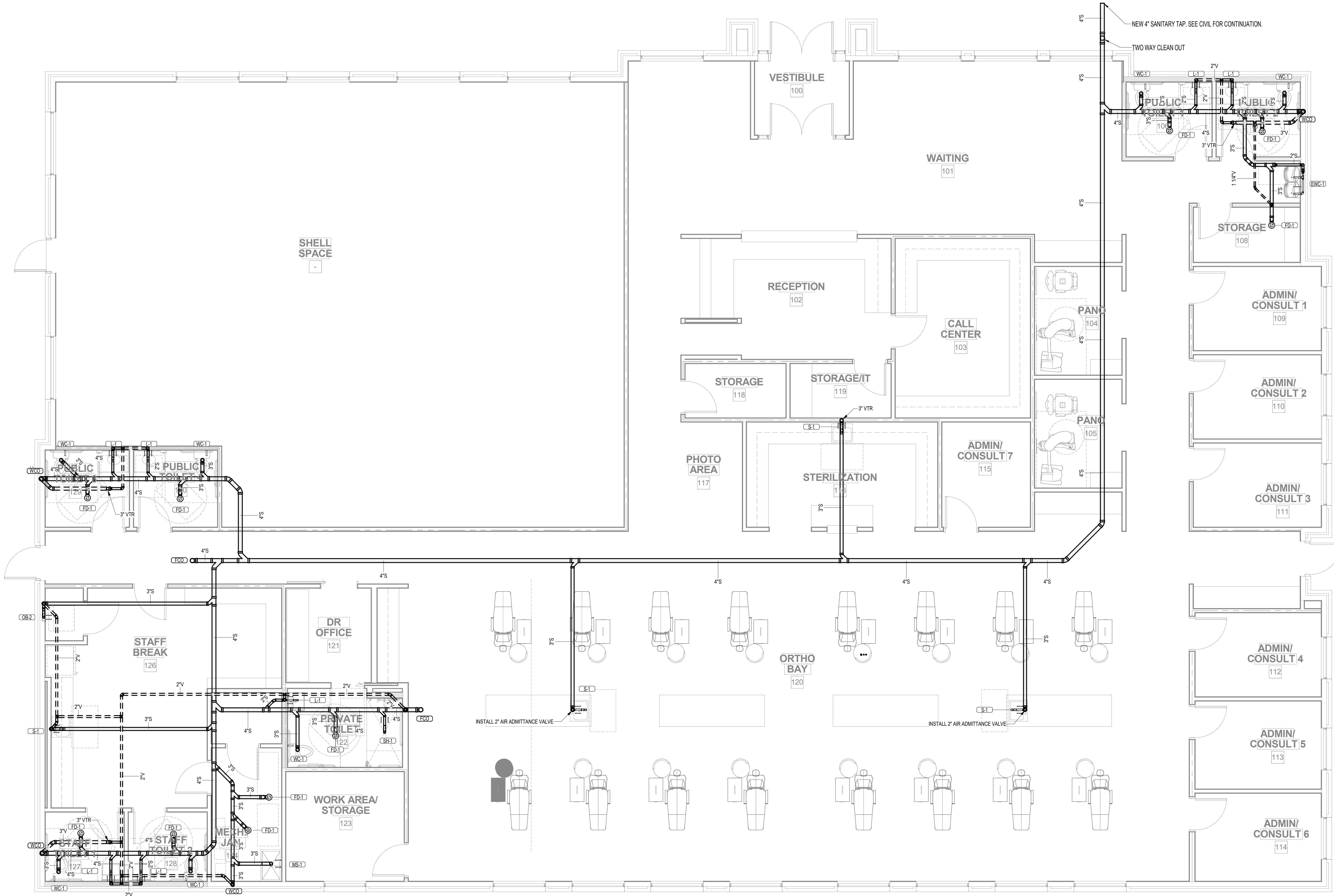
Sheet Name:
 PLUMBING GRAVITY PLAN

Sheet Number:

P2.1

© Copyright 2022 Miller
 All Rights Reserved

**TLC ENGINEERING
 SOLUTIONS**
Copyright 2023
 201 St. Charles Avenue
 Suite 4318
 New Orleans, LA 70170
 P 504.777.0040
 E: 3319
 www.tlc-engineer.com
 TLC No. 722125
THINK. LISTEN. CREATE.



① LEVEL 01 - GRAVITY
 1/4" = 1'-0"

12/9/2023 10:37:42 AM

Architect's Design Team:

Architect:
Miller Architects, Inc.
13401 N. Western Ave.
Suite #302
Oklahoma City, Oklahoma 73114
P: 405.843.6656
W: www.millerarch.com
Interior Designer - Finishes:
Miller Architects, Inc.
13401 N. Western Ave.
Suite #302
Oklahoma City, Oklahoma 73114
P: 405.843.6656
F: 405.843.8926
W: www.millerarch.com

STRUCTURAL ENGINEER:
TLC ENGINEERING SOLUTIONS
201 St. Charles Avenue
Suite 4318
New Orleans, LA 70170
p: 504.777.0040
W: www.tlc-eng.com

MEP ENGINEER:
TLC ENGINEERING SOLUTIONS
201 St. Charles Avenue
Suite 4318
New Orleans, LA 70170
p: 504.777.0040
W: www.tlc-eng.com

Owner's Design Team:

CIVIL ENGINEER:
MOORE BASSE CONSULTING
800 N. Goodwin Street
Tomball, Texas 77375
p: 281.222.8918
W: www.moorebasse.com

Project:

**REDEMPTION
ORTHODONTICS
(DR. VRACAR)**

BRADFORDVILLE, FL

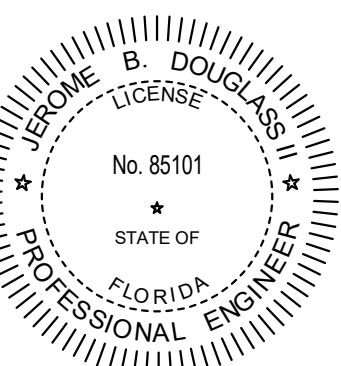
Owner's Representative:

Trevor Hayes
Ashlin Gray
12360 Market Drive
Oklahoma City, OK 73114
P: 405.300.4003
W: www.ashlingray.com

Project Number: MAI# 22032.0

Seal:

This item has been electronically signed and sealed by Jerome Douglas, PE using a digital signature.
Printed copies of this document are not considered signed and sealed and the signature must be verified on any electronic copies.



Date: 05/31/2023

Issue: 100% CONSTRUCTION DOCUMENTS

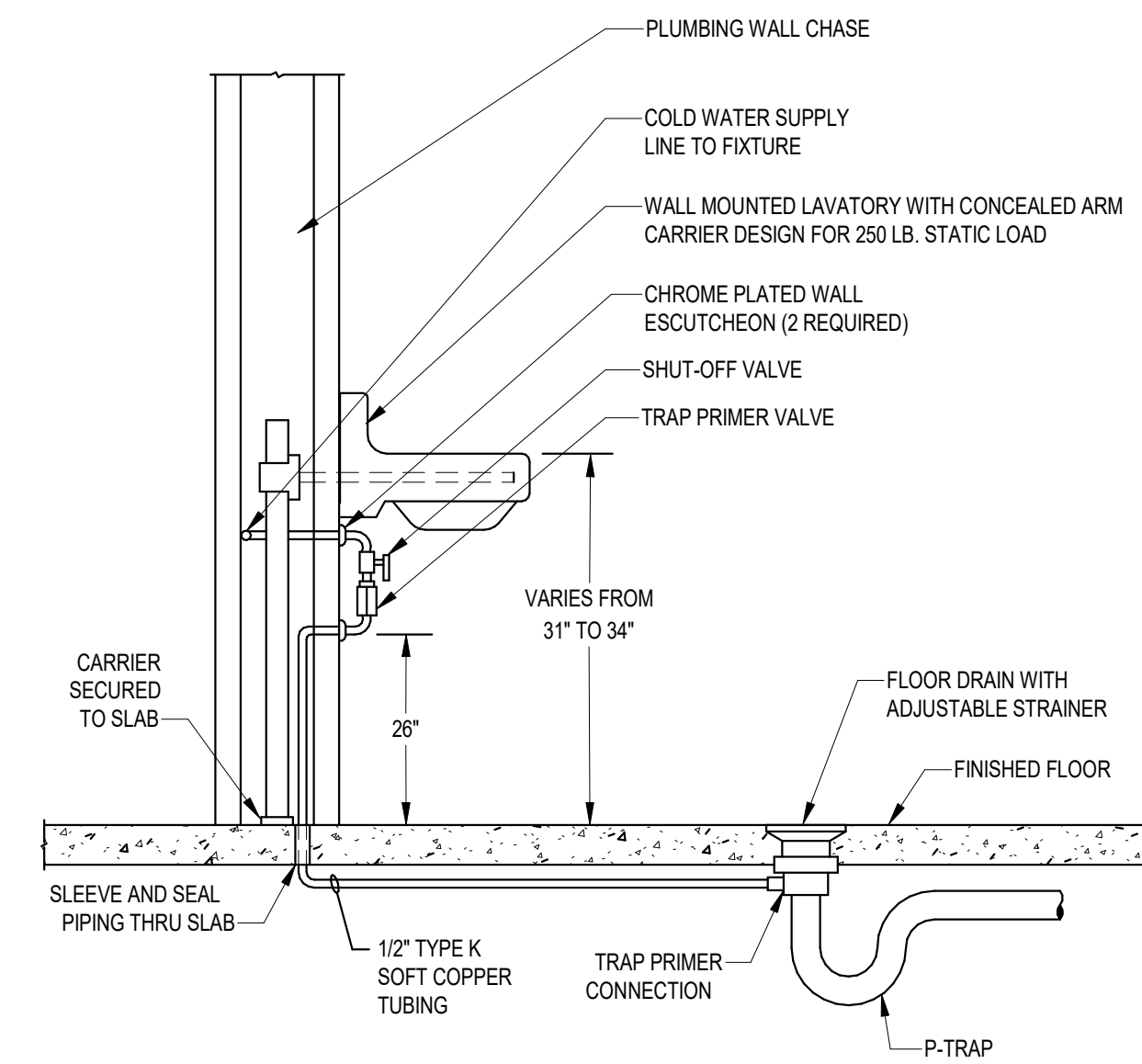
Revisions		
No.	Date	Description

Sheet Name:
PLUMBING DETAILS

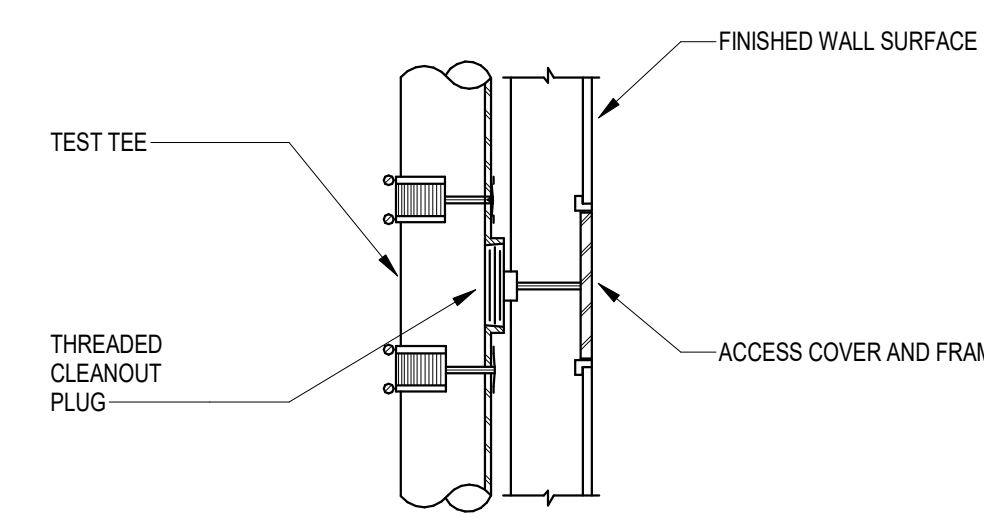
Sheet Number:

P3.0

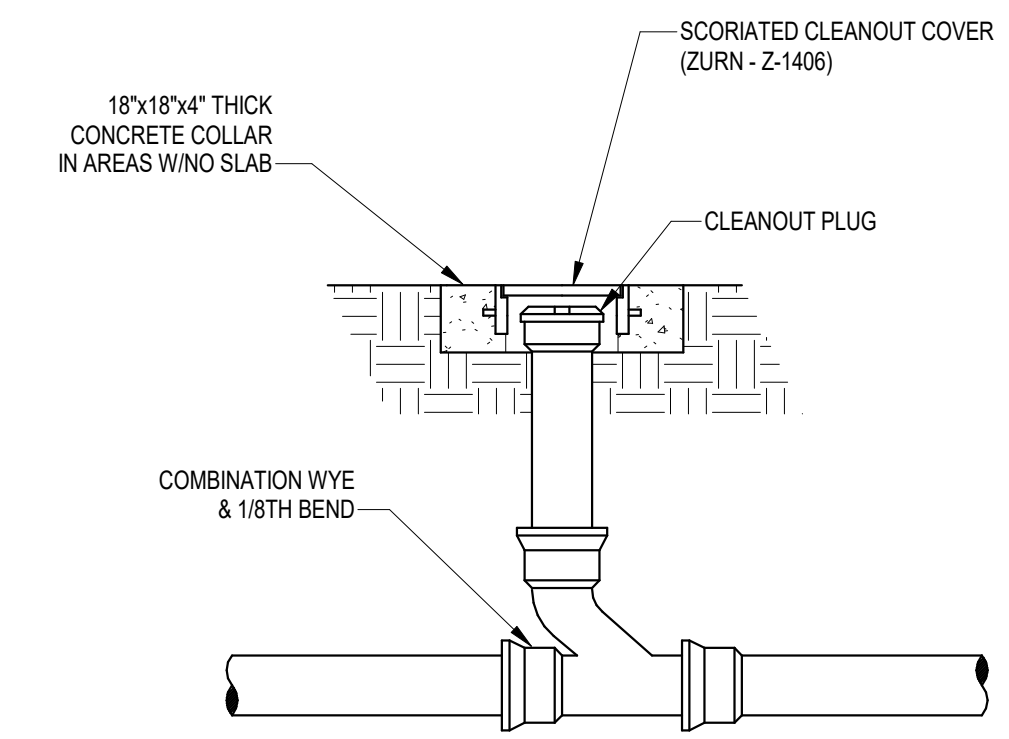
© Copyright 2022 Miller
All Rights Reserved



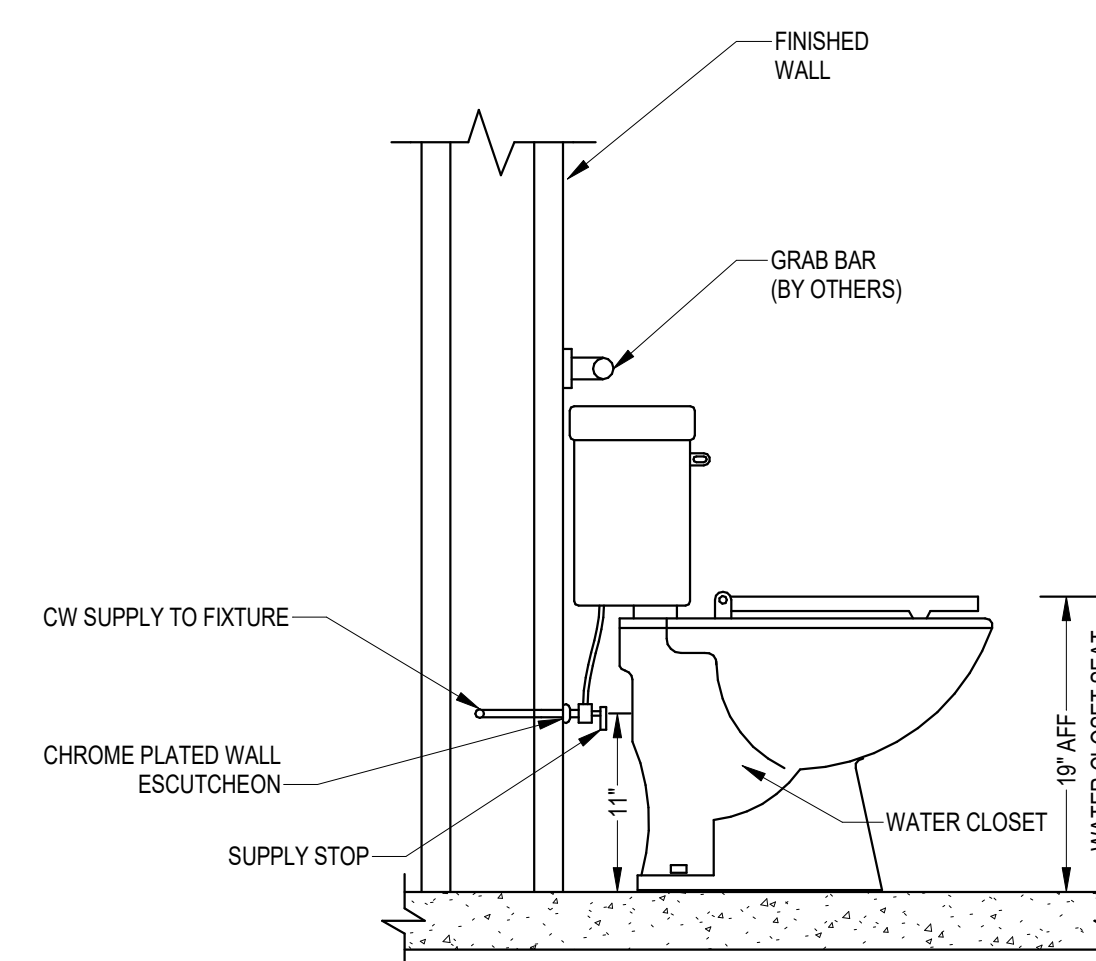
3 TRAP PRIMER
12" = 1'-0"



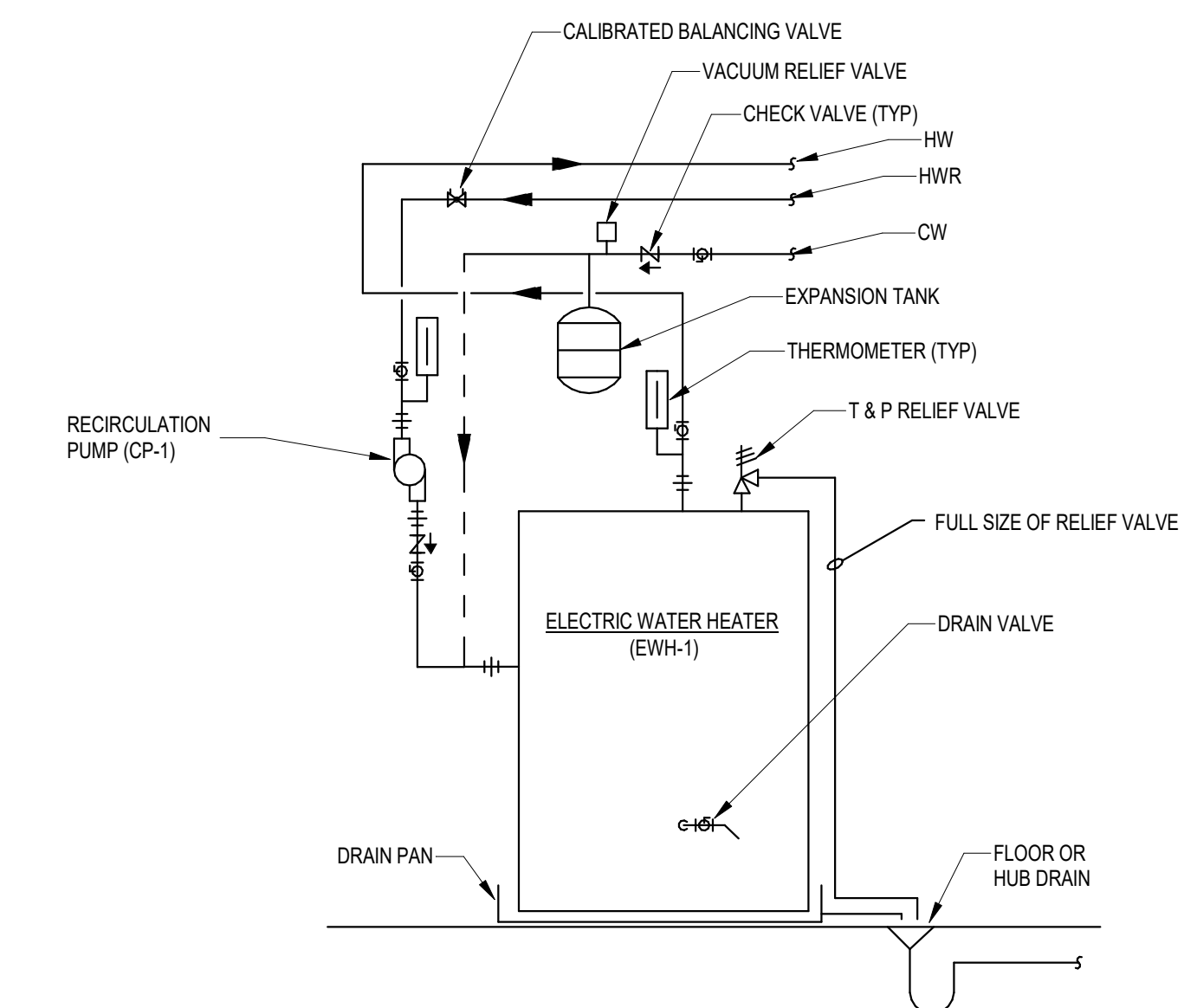
2 WALL CLEANOUT
12" = 1'-0"



1 EXTERIOR CLEANOUT
12" = 1'-0"



5 WATER CLOSET
12" = 1'-0"



4 ELECTRIC WATER HEATER
12" = 1'-0"

Architect's Design Team:

Architect:
Miller Architects, Inc.
13401 N. Western Ave.
Suite #302
Oklahoma City, Oklahoma 73114
P: 405.843.6656
W: www.millerarch.com

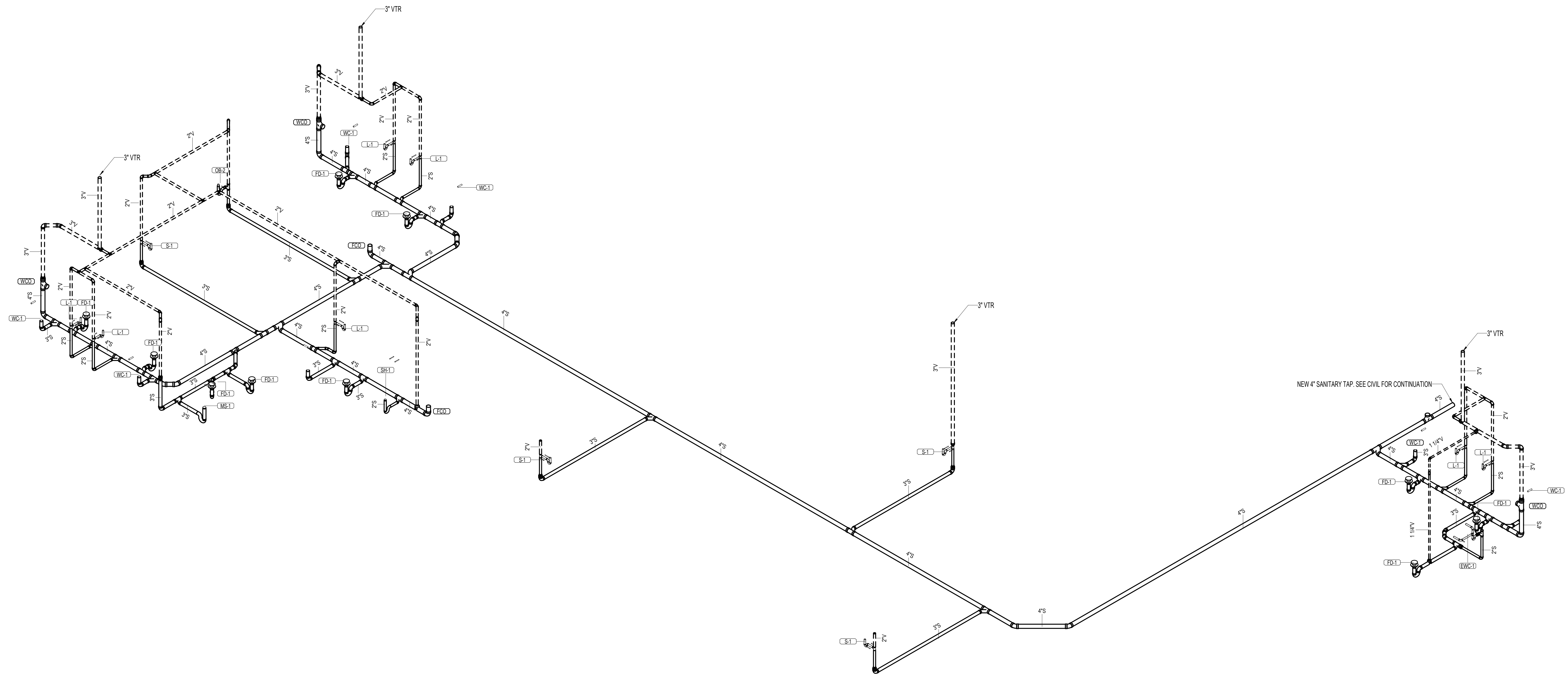
Interior Designer - Finishes:
Miller Architects, Inc.
13401 N. Western Ave.
Suite #302
Oklahoma City, Oklahoma 73114
P: 405.843.6656
F: 405.843.8926
W: www.millerarch.com

STRUCTURAL ENGINEER:
TLC ENGINEERING SOLUTIONS
201 St. Charles Avenue
Suite 4318
New Orleans, LA 70170
P: 504.777.0040
W: www.tlceng.com

MEP ENGINEER:
TLC ENGINEERING SOLUTIONS
201 St. Charles Avenue
Suite 4318
New Orleans, LA 70170
P: 504.777.0040
W: www.tlceng.com

Owner's Design Team:

CIVIL ENGINEER:
MOORE BASS CONSULTING
80 N. Gadsden Street
Tallahassee, Florida 32303
P: 904.222.8818
W: www.moorebass.com



Project:

**REDEMPTION
ORTHODONTICS
(DR. VRACAR)**

BRADFORDVILLE, FL

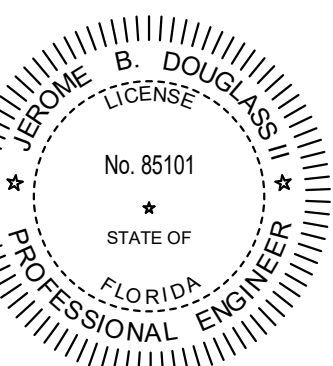
Owner's Representative:

Trevor Hayes
Ashlin Gray
12360 Market Drive
Oklahoma City, OK 73114
P: 405.360.4003
W: www.ashlingray.com

Project Number: MAH# 22032.0

Seal:

This item has been electronically signed and sealed by Jerome Douglas, PE using a digital signature.
Printed copies of this document are not considered signed and sealed and the signature must be verified on any electronic copies.



Date: 05/31/2023

Issue: 100% CONSTRUCTION DOCUMENTS

Revisions		
No.	Date	Description

Sheet Name:
PLUMBING ISOMETRICS

Sheet Number:

P4.0

© Copyright 2022 Miller
All Rights Reserved

1 PLUMBING GRAVITY ISOMETRIC

Architect's Design Team:

Architect:
Miller Architects, Inc.
13401 N. Western Ave.
Suite #302
Oklahoma City, Oklahoma 73114
P: 405.843.6656
W: www.millerarch.com

Interior Designer - Finishes:
Miller Architects, Inc.
13401 N. Western Ave.
Suite #302
Oklahoma City, Oklahoma 73114
P: 405.843.6656
F: 405.843.8926
W: www.millerarch.com

STRUCTURAL ENGINEER:
TLC ENGINEERING SOLUTIONS
201 St. Charles Avenue
Suite 4318
New Orleans, LA 70170
p: 504.777.0040
W: www.tlceng.com

MEP ENGINEER:
TLC ENGINEERING SOLUTIONS
201 St. Charles Avenue
Suite 4318
New Orleans, LA 70170
p: 504.777.0040
W: www.tlceng.com

Owner's Design Team:

CIVIL ENGINEER:
MOORE BASS CONSULTING
801 N. Goodwin Street
Tomball, Texas 77375
p: 281.222.8878
W: www.moorebass.com

Project:

**REDEMPTION
ORTHODONTICS
(DR. VRACAR)**

BRADFORDVILLE, FL

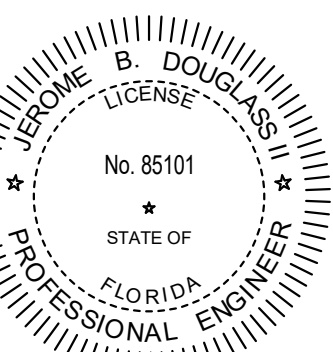
Owner's Representative:

Trevor Hayes
Ashiton Gray
12360 Market Drive
Oklahoma City, OK 73114
P: 405.300.4003
W: www.ashitongray.com

Project Number: MAI# 22032.0

Seal:

This item has been electronically signed and sealed by Jerome Douglas, PE using a digital signature.
Printed copies of this document are not considered signed and sealed and the signature must be verified on any electronic copies.



Date: 05/31/2023

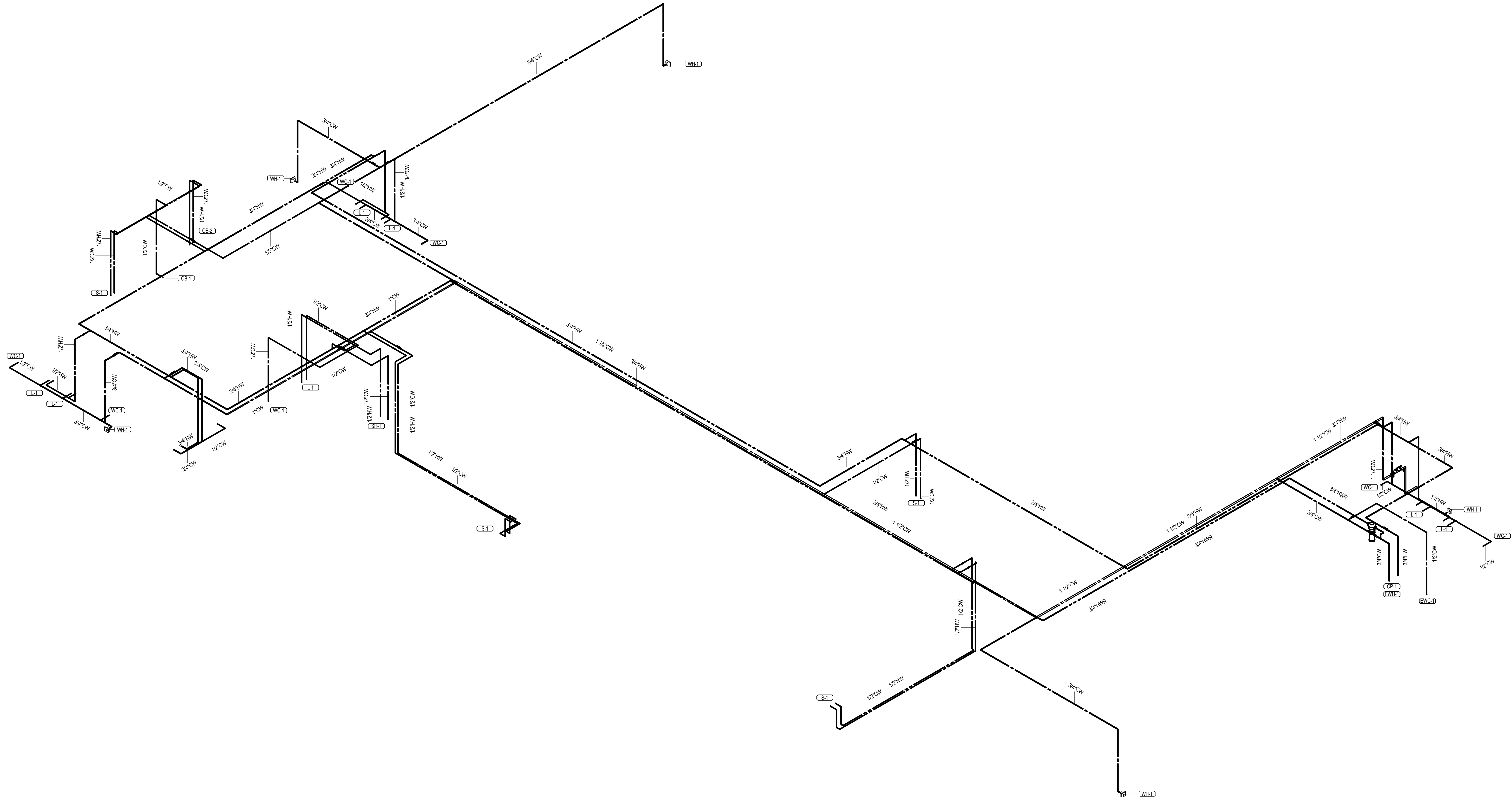
Issue: 100% CONSTRUCTION DOCUMENTS

Revisions		
No.	Date	Description

Sheet Name:
PLUMBING ISOMETRICS

Sheet Number:
P4.1

© Copyright 2022 Miller
All Rights Reserved



1 PLUMBING PRESSURE ISOMETRIC