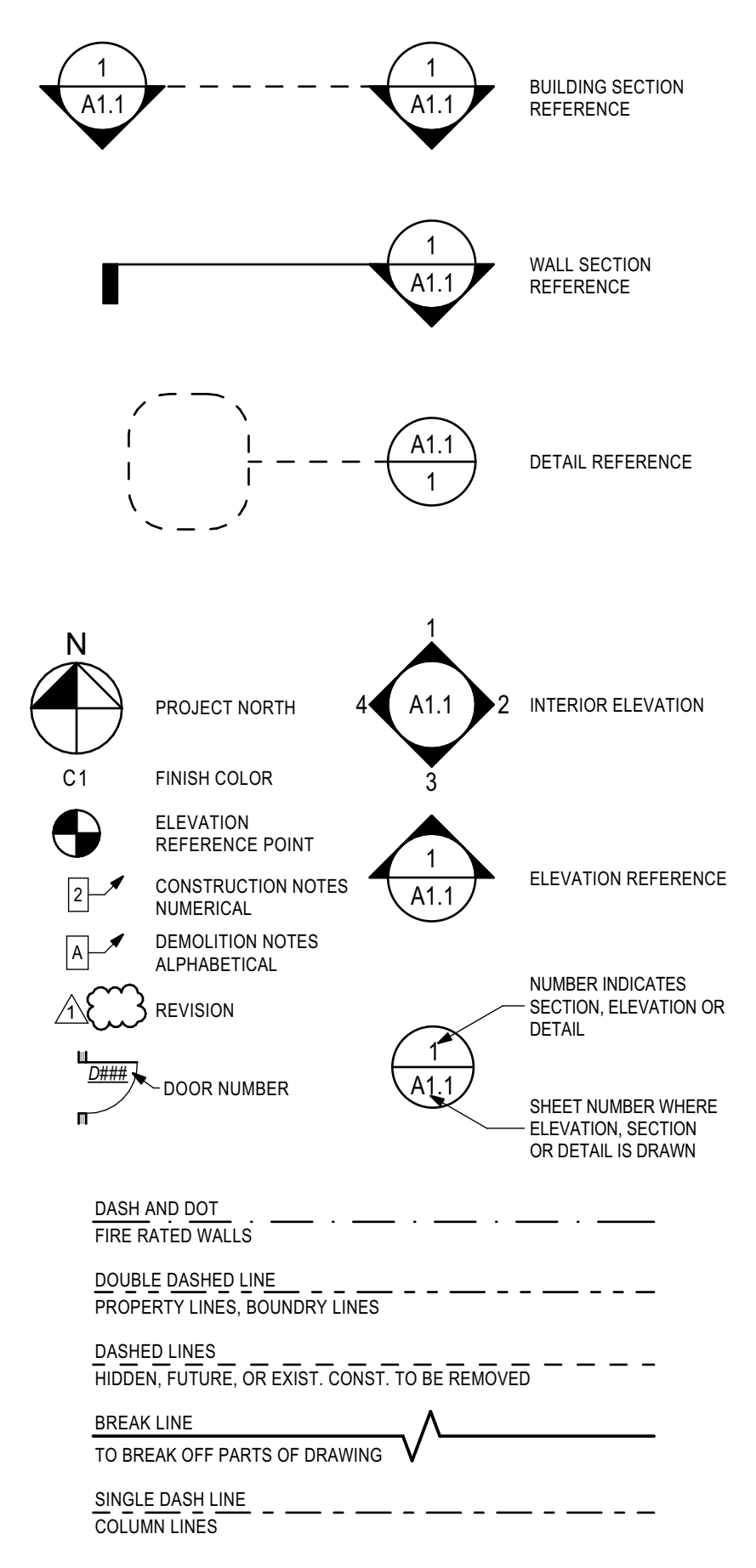


1 Architectural Site Plan
1" = 5'



Legend of Architectural Symbols:

1) THESE DRAWINGS AND RENDERINGS ARE INSTRUMENTS OF SERVICE... 2) ALL DIMENSIONS ARE TO THE FACE OF STUD OR STUD TRACK... 3) WHERE STRUCTURAL DESIGN LOADS ARE NOT PROVIDED... 4) DIMENSIONS FOR PATHS OF EGRESS INCLUDING CORRIDORS AND STAIRS... 5) DO NOT SCALE DRAWINGS... 6) IF AN ORDER OF PRECEDENT FOR THE INTERPRETATION OF DOCUMENTS IS NOT PROVIDED... 7) WHERE CLEAR DIMENSIONS ARE INDICATED... 8) ALL FIRE RATED PARTITION OR WALL ASSEMBLIES SHALL EXTEND FROM THE FLOOR SLAB... 9) ALL FIRE RATED FLOOR/CEILING OR ROOF/CEILING ASSEMBLIES SHALL BE CONTINUOUS... 10) TYPICAL AND STANDARD DETAILS MAY BE PROVIDED IN THE DRAWINGS... 11) THE INSTALLATION OF MECHANICAL, PLUMBING AND ELECTRICAL ITEMS... 12) THESE GENERAL NOTES HAVE THE SAME AUTHORITY AS OTHER NOTES... 13) THE CONTRACTOR SHALL ERECT AND MAINTAIN ALL REASONABLE SAFEGUARDS... 14) THE CONTRACTOR SHALL BE RESTRICTED TO AREAS SPECIFIED BY THE OWNER... 15) THE CONTRACTOR SHALL MAINTAIN A CLEAN WORK PREMISE... 16) THE CONTRACTOR SHALL TAKE CARE NOT TO DAMAGE EXISTING SURFACES...

Architectural General Notes:

Standard Abbreviations table listing abbreviations for materials, finishes, and construction items. Examples include: A/C - AIR CONDITIONING, ACI - AMERICAN CONCRETE INSTITUTE, FEB - FIRE EXTINGUISHER W/ BRACKET, SAN - SANITARY, SC - SOLID CORE, SEC - SECTION, SECT - SECTION, SEW - SEWER, SF - SQUARE FEET, SGL - SINGLE, SIM - SIMILAR, SJ - SAWED JOINT, SPKLR - SPRINKLER, SQ - SQUARE, SST - STAINLESS STEEL, STD - STANDARD, STL - STEEL, STR - STORAGE, STRUC - STRUCTURAL, SUSP - SUSPENDED, TBD - TO BE DETERMINED, TEL - TELEPHONE, TEMP - TEMPORARY, TEMPERATURE, T&G - TONGUE & GROOVE, THK - THICK, TOB - TOP OF BEAM, TOC - TOP OF CONCRETE, TOF - TOP OF FOOTING, TOS - TOP OF STEEL, TS - STRUCTURAL TUBE STEEL, TV - TELEVISION, TYP - TYPICAL, UNF - UNFINISHED, UNL - UNLESS OTHERWISE NOTED, UR - URINAL, VCT - VINYL COMPOSITION TILE, VB - VAPOR BARRIER, VERT - VERTICAL, VEST - VESTIBULE, VFY - VERIFY, VOL - VOLUME, VOL - VINYL TILE, W/ - WITH, WC - WATER CLOSET, WD - WOOD, W/O - WITHOUT, W/P - WATERPROOF WORKING POINT, WWF - WELDED WIRE FABRIC.

Standard Abbreviations:

Applicable Codes table listing applicable codes and their editions. Examples include: Florida Building Code, Building (FBC-B) 7th Edition, Florida Building Code, Accessibility (FBC-A) 7th Edition, Florida Building Code, Existing Building (FBC-EB) 7th Edition, Florida Building Code, Mechanical 7th Edition, Florida Building Code, Fuel Gas 7th Edition, Florida Building Code, Plumbing 7th Edition, Florida Building Code, Energy Conservation 7th Edition, Florida Fire Prevention Code (FFPC) 7th Edition, National Electrical Code (NEC) 2017 Edition.

NOTE: CONTRACTOR SHALL MAKE AVAILABLE TO THE BUILDING INSPECTOR DOCUMENTATION NECESSARY TO VERIFY THAT ALL EXTERIOR ENVELOPE COMPONENTS REQUIRING PRODUCT APPROVAL PER FS 533.942 ARE IN COMPLIANCE WITH PRODUCT APPROVAL INSTALLATION REQUIREMENTS.

General Construction Notes
1. DIMENSIONS INDICATED FOR NEW PARTITIONS ARE TO THE CENTER OF PARTITION OR EDGE OF STUD FOR METAL PARTITIONS... 2. ALL NEW WALL SURFACES SHALL BE FINISHED AND PAINTED PER SPECIFICATIONS... 3. ALL WORK IS TO BE LAD OUT TRUE, SQUARE AND PLUMB... 4. THE CONTRACTOR IS RESPONSIBLE FOR COORDINATION OF ALL TRADES AND WORK... 5. THE CONTRACTOR SHALL PROVIDE BARRICADES, DUST CONTROL, TEMPORARY POWER LIGHTING... 6. THE CONTRACTOR SHALL MAINTAIN A FULL SET OF COMPLETE AND CURRENT DRAWINGS AVAILABLE FOR REVIEW AT THE JOB SITE...

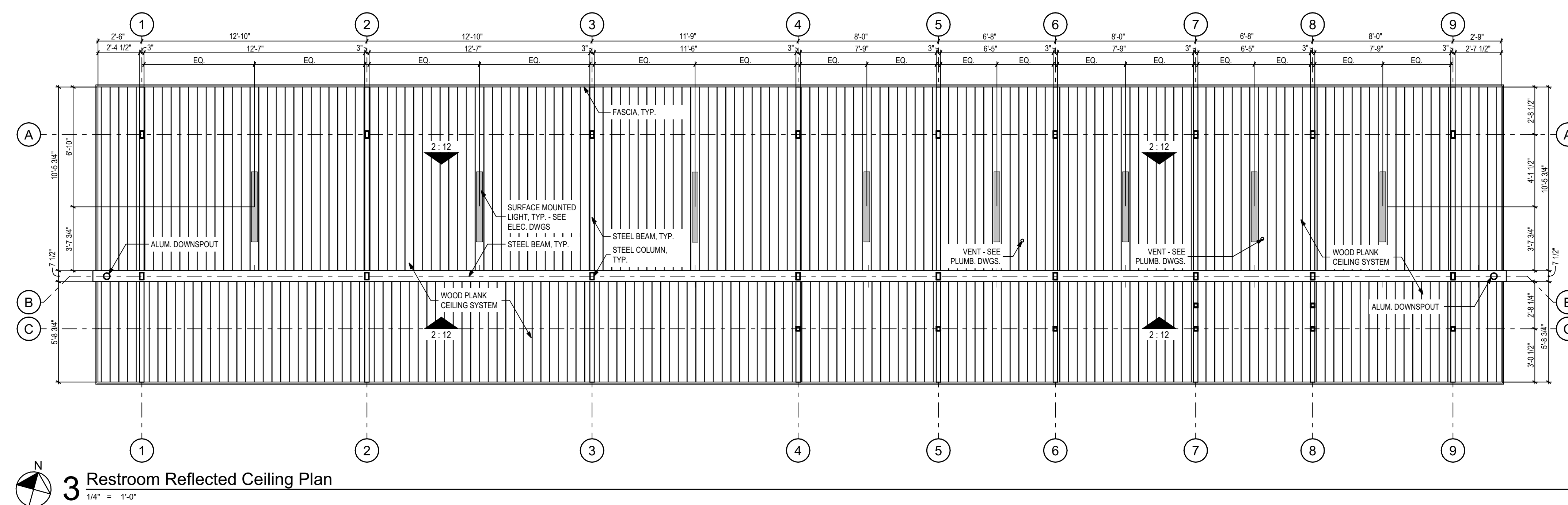
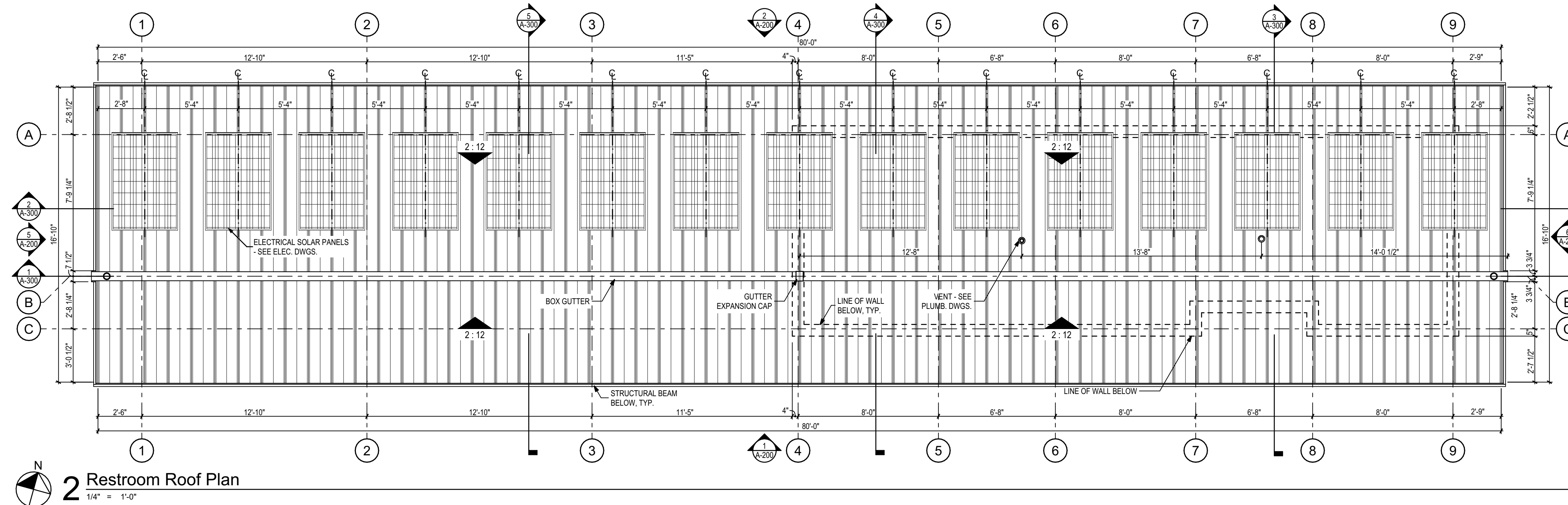
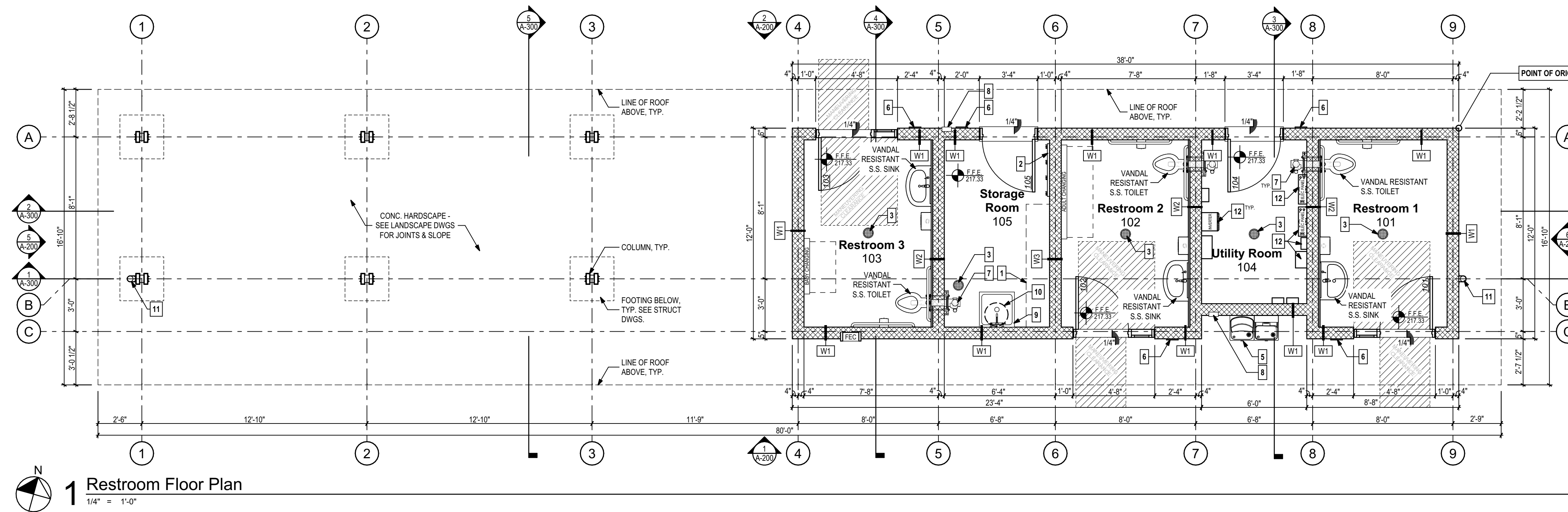
Life Safety Information
NEW CONSTRUCTION
CONSTRUCTION TYPE: V-B
OCCUPANCY: GROUP U - UTILITY
BUILDING AREA (NO. OF STORIES: 1 STORY)
ALLOWABLE BUILDING AREA: 5,500 SF
PROVIDED:
BUILDING FOOTPRINT (UNDER ROOF): 1,350 SF
ENCLOSED (INTERIOR SPACE): 460 SF
ALLOWABLE BUILDING HEIGHT/NO. OF STORIES: 40/ 1 STORY
PROVIDED BUILDING HEIGHT (ROOF BEARING) = 10'
FIRE SPRINKLER PROVIDED: NO
FBC-B TABLE 601: NO RATING REQTS FOR BUILDING ELEMENTS
EXTINGUISHER INFO:
FEC FIRE EXTINGUISHER CABINET 2A10BC, U.N.O.
FEB BRACKET MOUNTED FIRE EXTINGUISHER, 2A10BC, U.N.O.

Plumbing Fixture Calculation
PICKLE-BALL COURTS: (BY USE) 20
475 SF SHADE STRUCTURE: 15 NET 32
6000 SF PLAY AREA: 50 GROSS 128
TOTAL: 180
OUTDOOR ASSEMBLY SPACE
MEN'S:
1 WATER CLOSET PER 75 FOR FIRST 1,500 OCCUPANTS
1 LAVATORY PER 200
WOMEN'S:
1 WATER CLOSET PER 40 FOR FIRST 1,500 OCCUPANTS
1 LAVATORY PER 150
3 WATER CLOSETS/ 3 LAVATORIES PROVIDED

Table with 3 columns: ID, Name, Current Issue. Lists various project items such as General Notes, Site Plan, Paving, and Plumbing fixtures with their current status.

Drawing Index table listing drawing titles and their corresponding sheet numbers. Examples include: General Notes, Sheet Index, and Architectural Site Plan (A-001).

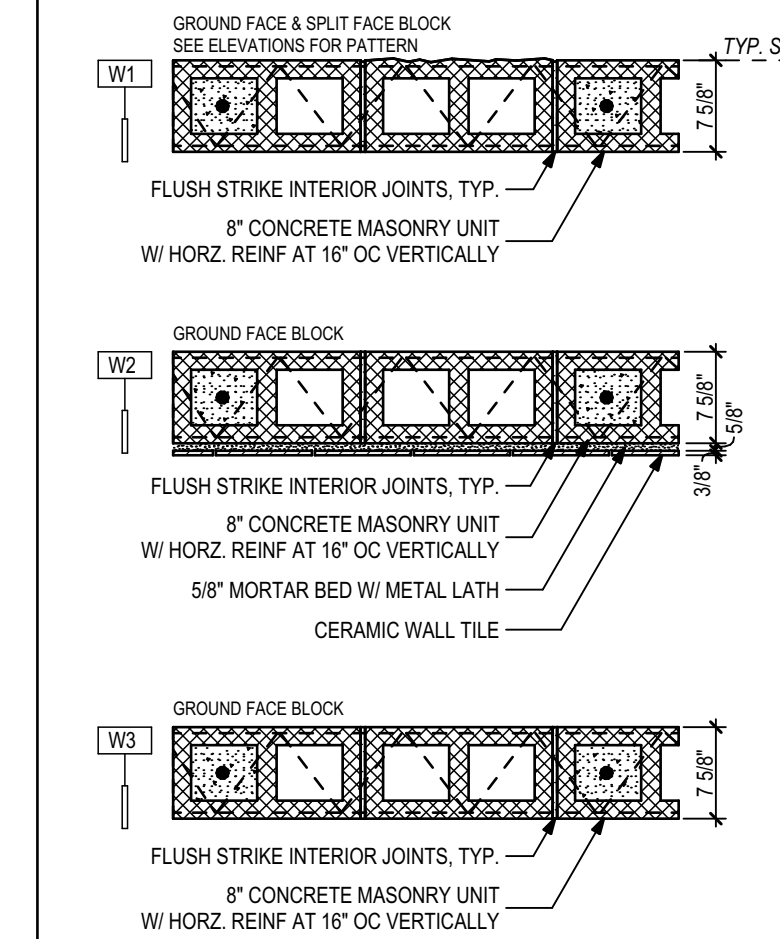
PROJECT INFORMATION
MARKET DISTRICT PARK
Tallahassee, Florida
CLIENT: Blueprint Intergovernmental Agency
315 S. Calhoun Street, Suite 450, Tallahassee, FL 32301
Landscape Architecture = L
HARGREAVES JONES
180 Magazine Street, Cambridge, MA 02139
www.hargreaves.com
Architecture = A
Signage & Wayfinding = W
Architects Lewis + Whitlock
206 W. Virginia Street, Tallahassee, FL 32301
www.think3d.net
Irrigation Design = LI
Civil Engineering = C (through Schematic Design)
Local Landscape Architect
KEITH Engineering Inspired Design
301 Atlantic Boulevard, Pompano Beach, FL 33060
www.keithteam.com
Structural Engineering (Site) = SS
Structural Engineering (Architecture) = SA
Johnson + Milner
1725 Capital Cir NE #301, Tallahassee, FL 32308
www.johnsonmilner.com
Mechanical Engineering (Architecture) = MA
Electrical Engineering (Site) = ES
Electrical Engineering (Architecture) = EA
Plumbing Engineering (Architecture) = PA
H2 Engineering
114 E. 9th Ave, Tallahassee, FL 32303
www.h2engineering.com
Survey = V
AD Platt
3436 Forward Pass Trail, Tallahassee, FL 32309
www.adplatt.com
ISSUE/REVISIONS
NO. DESCRIPTION DATE
1 ISSUED FOR SCHEMATIC DESIGN 2022/10/28
2 ISSUED FOR DESIGN DEVELOPMENT 2023/01/13
3 ISSUED FOR 90% CD CHECKSET 2023/07/07
4 FINAL BID SET 2024/06/14
KEY MAP
SHEET INFORMATION
Project No.: TMD 2101
Package: FINAL BID SET
Drawn By: B.B.
Checked By: C. WHITLOCK
Date: 2024/06/14
Scale: AS INDICATED
SHEET TITLE
General Notes, Sheet Index, and Architectural Site Plan
SHEET NO.
A-001



Construction Notes

- 1 1" DEEP WALL MOUNTED WIRE SHELVING - CLOSET/MAID HEAVY DUTY VENTILATED WIRE SHELVING - CHROME FINISH
- 2 WALL MOUNTED MOP/BROOM HOLDER - ULINE H-6090
- 3 FLOOR DRAIN - SEE PLUMBING DRAWINGS
- 4 ELECTRICAL EQUIPMENT - SEE ELECTRICAL DRAWINGS
- 5 H-LD DRINKING FOUNTAIN - SEE PLUMBING DRAWINGS
- 6 ACRYLIC WALL MOUNTED ROOM SIGN - SEE ELEVATIONS
- 7 TOILET WALL HANGERS/SANITARY LINE - SEE PLUMBING DRAWINGS
- 8 WALL HYDRANT - SEE PLUMBING DWGS.
- 9 MOP SINK - SEE PLUMBING DRAWINGS
- 10 WALL HUNG WATER HEATER - SEE PLUMBING DRAWINGS
- 11 4"X ALUMINUM DOWNSPOUT
- 12 ELECTRICAL EQUIPMENT - SEE ELECTRICAL DRAWINGS FOR COORDINATION

Partition Types



PROJECT INFORMATION

MARKET DISTRICT PARK
Tallahassee, Florida

CLIENT:
Blueprint Intergovernmental Agency
315 S. Calhoun Street, Suite 450, Tallahassee, FL 32301

Landscape Architecture = L
HARGREAVES JONES
180 Magazine Street, Cambridge, MA 02139
www.hargreaves.com

Architecture = A
Signage & Wayfinding = W
Architects Lewis + Whitlock
206 W. Virginia Street, Tallahassee, FL 32301
www.think3d.net

Irrigation Design = LI
Civil Engineering = C (through Schematic Design)
Local Landscape Architect
KEITH Engineering Inspired Design
301 Atlantic Boulevard, Pompano Beach, FL 33060
www.keithteam.com

Structural Engineering (Site) = SS
Structural Engineering (Architecture) = SA
Johnson + Milner
1725 Capital Cir NE #301, Tallahassee, FL 32308
www.johnsonmilner.com

Mechanical Engineering (Architecture) = MA
Electrical Engineering (Site) = ES
Electrical Engineering (Architecture) = EA
Plumbing Engineering (Architecture) = PA
H2 Engineering
114 E. 5th Ave, Tallahassee, FL 32303
www.h2engineering.com

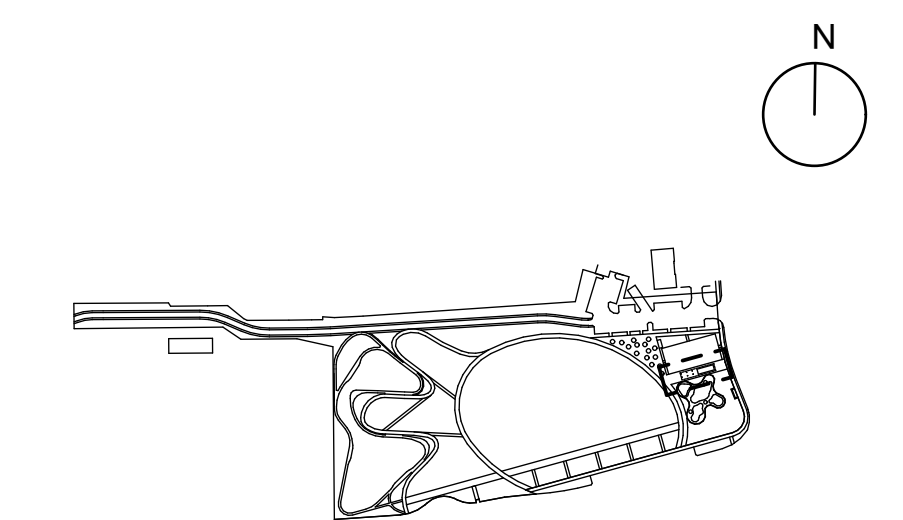
Survey = V
AD Platt
3436 Forward Pass Trail, Tallahassee, FL 32309
www.adplatt.com

SEAL/SIGNATURE

ISSUE/REVISIONS

NO.	DESCRIPTION	DATE
1	ISSUED FOR SCHEMATIC DESIGN	2022/10/28
2	ISSUED FOR DESIGN DEVELOPMENT	2023/01/13
3	ISSUED FOR 90% CD CHECKSET	2023/07/07
4	FINAL BID SET	2024/06/14

KEY MAP



SHEET INFORMATION

Project No.: TMD 2101
Package: FINAL BID SET
Drawn By: B.B.
Checked By: C. WHITLOCK
Date: 2024/06/14
Scale: AS INDICATED

SHEET TITLE

Architectural Floor, Roof, and Reflected Ceiling Plans

SHEET NO.

A-101

Drawing Legend

- NEW PARTITION
- NEW CONSTRUCTION
- CONSTRUCTION ABOVE
- CONSTRUCTION BELOW

Exterior Finish Schedule

- CONCRETE**
 M1 - CONCRETE MASONRY UNITS - PREFINISHED SPLIT FACE CMU WITH CLEAR ACRYLIC SEALANT - SANDSTONE
 M2 - ACCENT CONCRETE MASONRY UNITS - PREFINISHED GROUND/BURNISHED CMU WITH CLEAR ACRYLIC SEALANT - SANDSTONE
- METAL**
 MTL01 - PREFINISHED METAL FLASHING - DARK BRONZE
 MTL02 - PREFINISHED STANDING SEAM METAL ROOF - DARK BRONZE
- PAINT**
 P01 - EXTERIOR FIELD - SHERWIN WILLIAMS SW7004 PORPOISE
 P02 - EXTERIOR ACCENT - SHERWIN WILLIAMS SW6198 ELEPHANT EAR
- WOOD**
 WD1 - WOOD - SPECIES: CYPRESS - STAIN: EXTERIOR SEMI-TRANSPARENT STAIN - SHERWIN WILLIAMS SW6540 MOUNTAIN ASH

PROJECT INFORMATION

MARKET DISTRICT PARK
 Tallahassee, Florida

CLIENT:
 Blueprint Intergovernmental Agency
 315 S. Calhoun Street, Suite 450, Tallahassee, FL 32301

Landscape Architecture = L
HARGREAVES JONES
 180 Magazine Street, Cambridge, MA 02139
 www.hargreaves.com

Architecture = A
 Signage & Wayfinding = W
Architects Lewis + Whitlock
 206 W. Virginia Street, Tallahassee, FL 32301
 www.think3d.net

Irrigation Design = LI
 Civil Engineering = C (through Schematic Design)
 Local Landscape Architect
KEITH Engineering Inspired Design
 301 Atlantic Boulevard, Pompano Beach, FL 33060
 www.keithteam.com

Structural Engineering (Site) = SS
 Structural Engineering (Architecture) = SA
Johnson + Milner
 1725 Capital Cir NE #301, Tallahassee, FL 32308
 www.johnsonmilner.com

Mechanical Engineering (Architecture) = MA
 Electrical Engineering (Site) = ES
 Electrical Engineering (Architecture) = EA
 Plumbing Engineering (Architecture) = PA
H2 Engineering
 114 E. 5th Ave, Tallahassee, FL 32303
 www.h2engineering.com

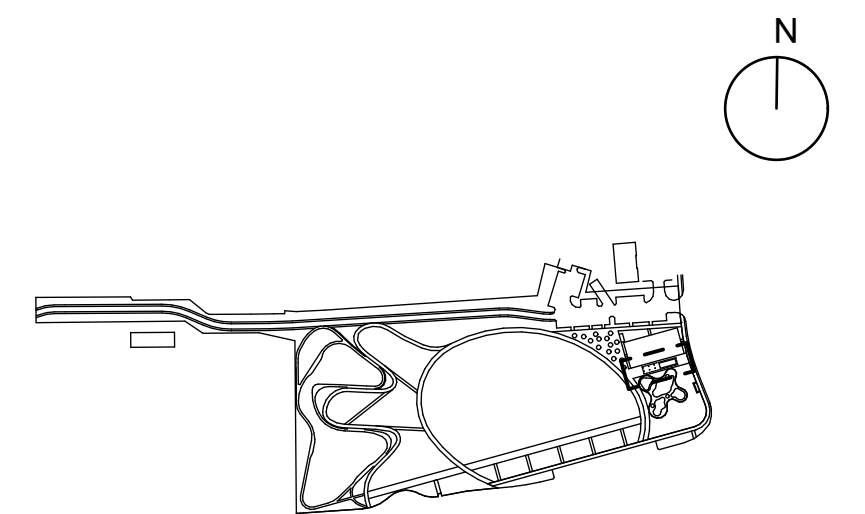
Survey = V
AD Platt
 3436 Forward Pass Trail, Tallahassee, FL 32309
 www.adplatt.com

SEAL/SIGNATURE

ISSUE/REVISIONS

NO.	DESCRIPTION	DATE
1	ISSUED FOR SCHEMATIC DESIGN	2022/10/28
2	ISSUED FOR DESIGN DEVELOPMENT	2023/01/13
3	ISSUED FOR 90% CD CHECKSET	2023/07/07
4	FINAL BID SET	2024/06/14

KEY MAP



SHEET INFORMATION

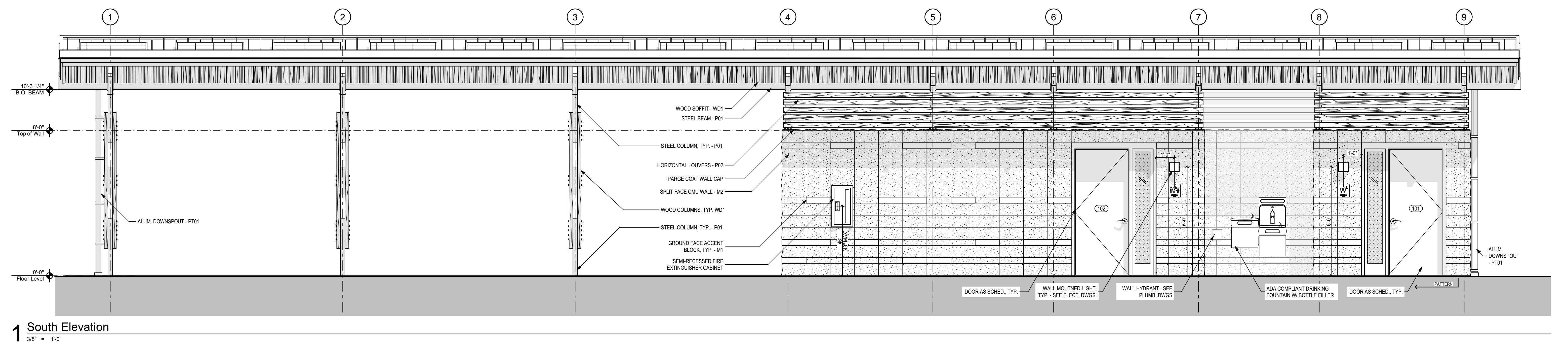
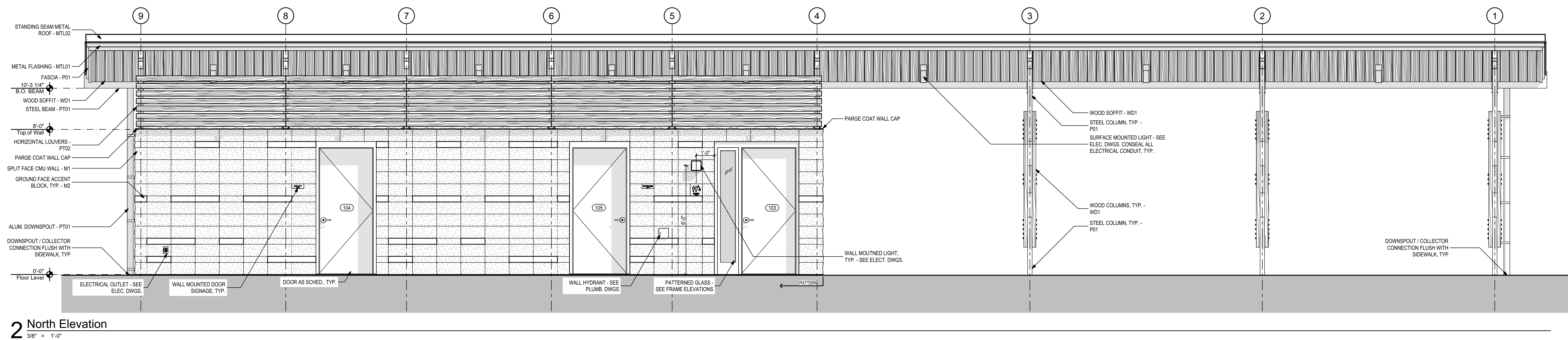
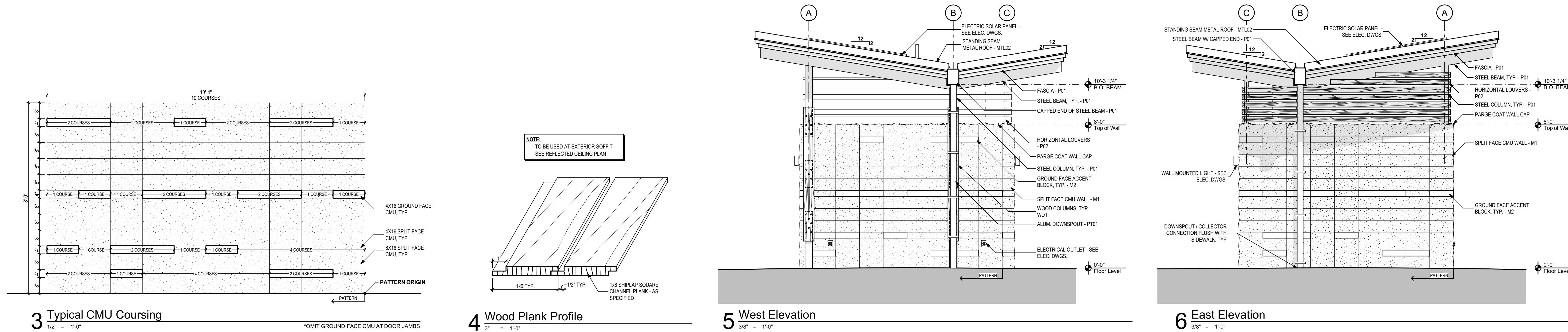
Project No.: TMD 2101
 Package: FINAL BID SET
 Drawn By: B.B.
 Checked By: C. WHITLOCK
 Date: 2024/06/14
 Scale: AS INDICATED

SHEET TITLE

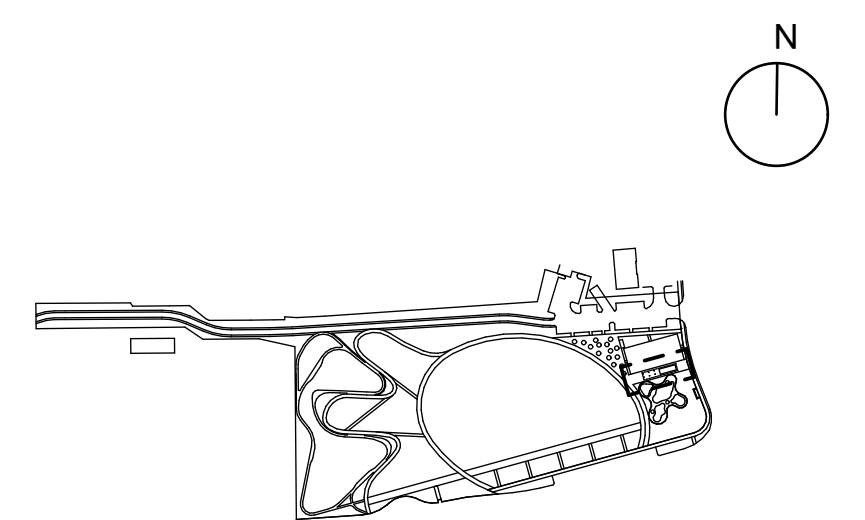
Exterior Elevations

SHEET NO.

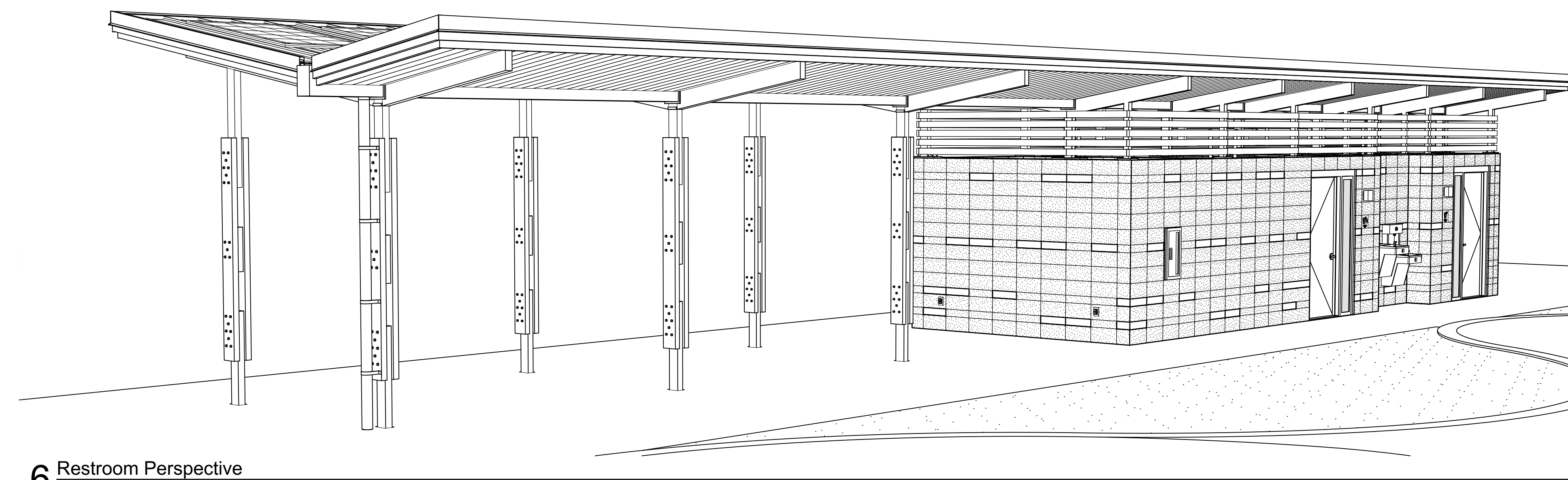
A-200



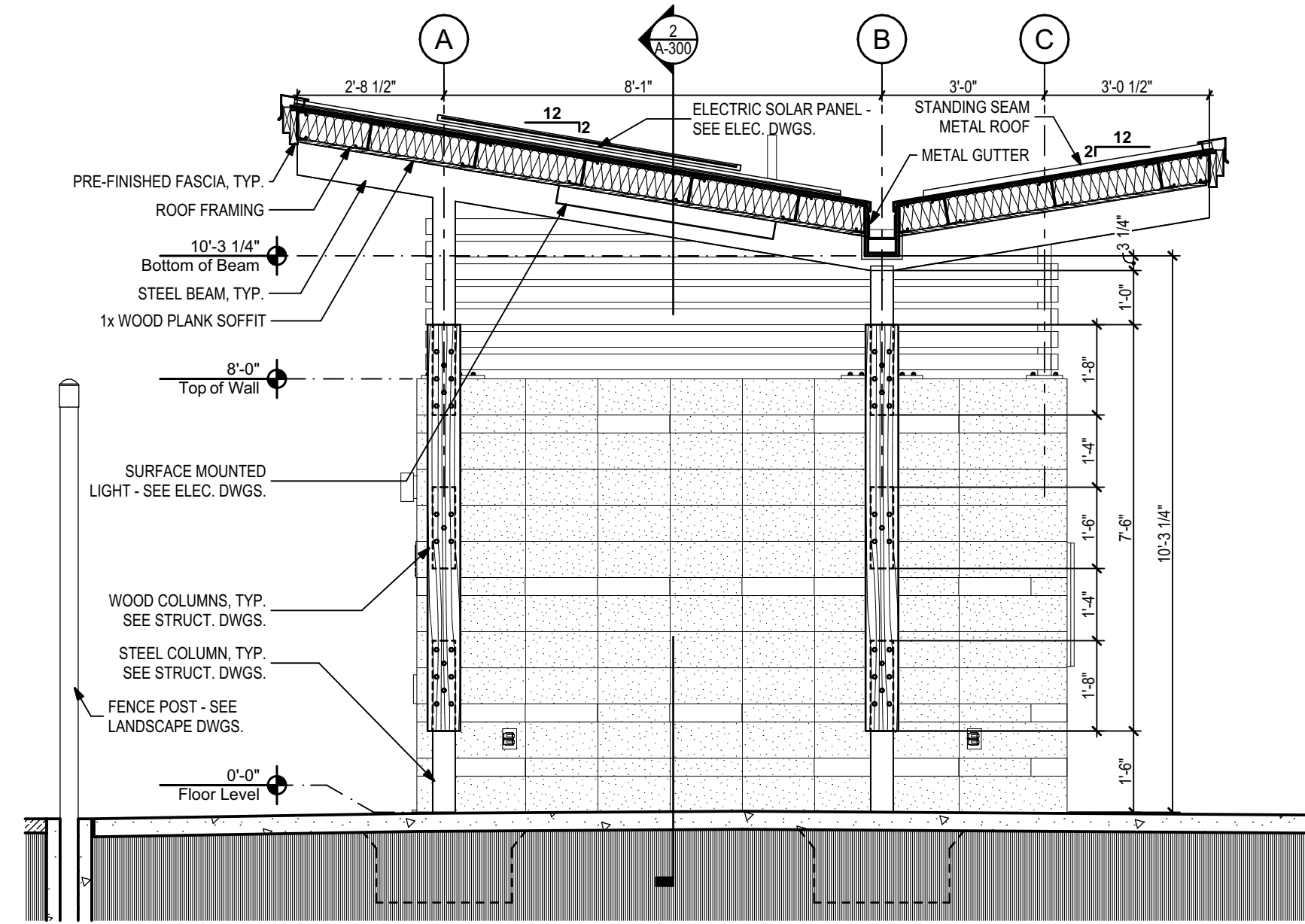
NO.	DESCRIPTION	DATE
1	ISSUED FOR SCHEMATIC DESIGN	2022/10/28
2	ISSUED FOR DESIGN DEVELOPMENT	2023/01/13
3	ISSUED FOR 90% CD CHECKSET	2023/07/07
4	FINAL BID SET	2024/06/14



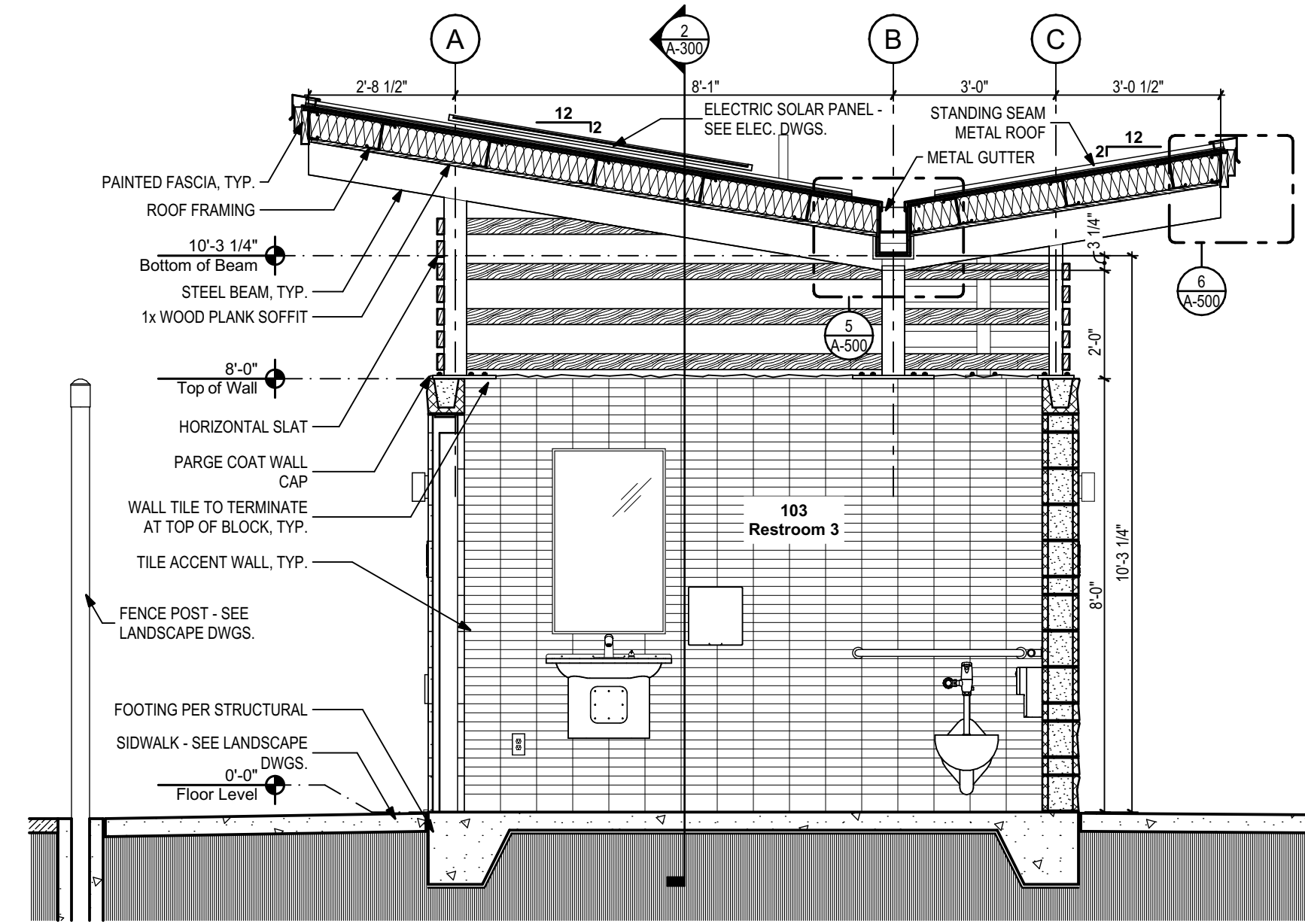
Project No.: TMD 2101
Package: FINAL BID SET
Drawn By: B.B.
Checked By: C. WHITLOCK
Date: 2024/06/14
Scale: AS INDICATED



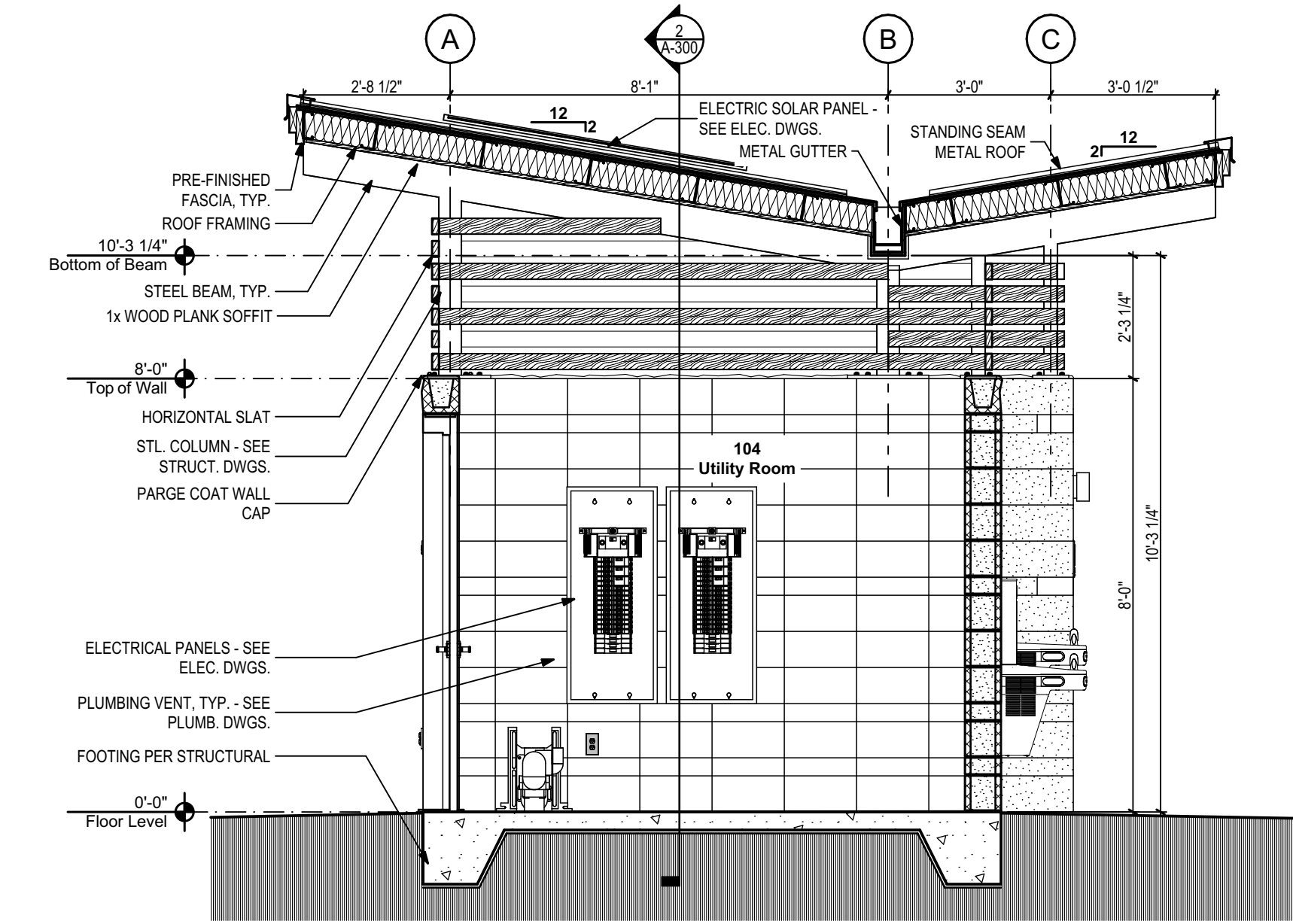
6 Restroom Perspective
NOT TO SCALE



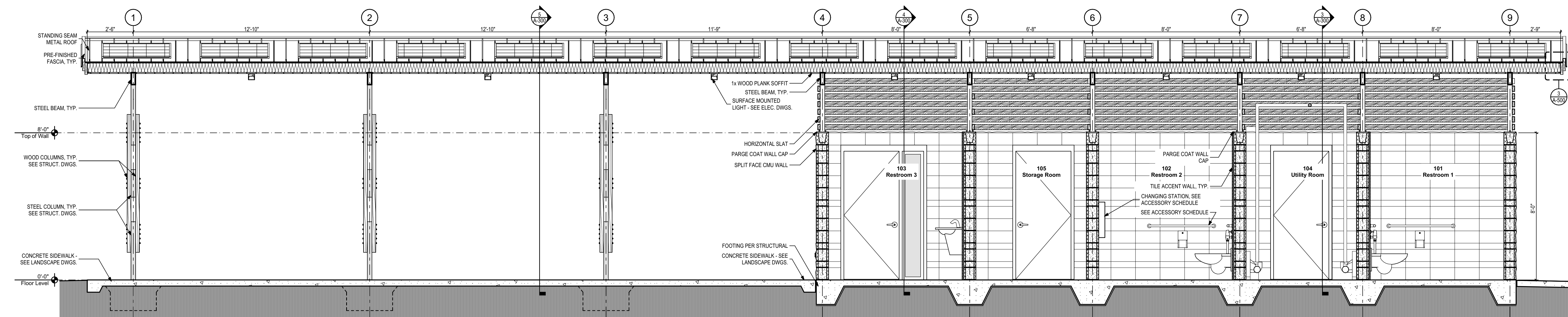
5 Restroom Building Lateral Section
3/8" = 1'-0"



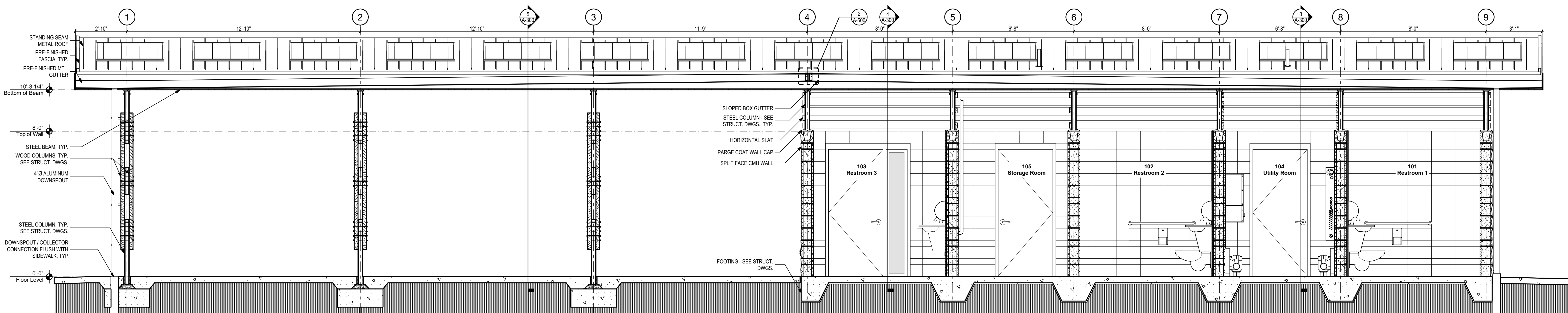
4 Restroom Building Lateral Section
3/8" = 1'-0"



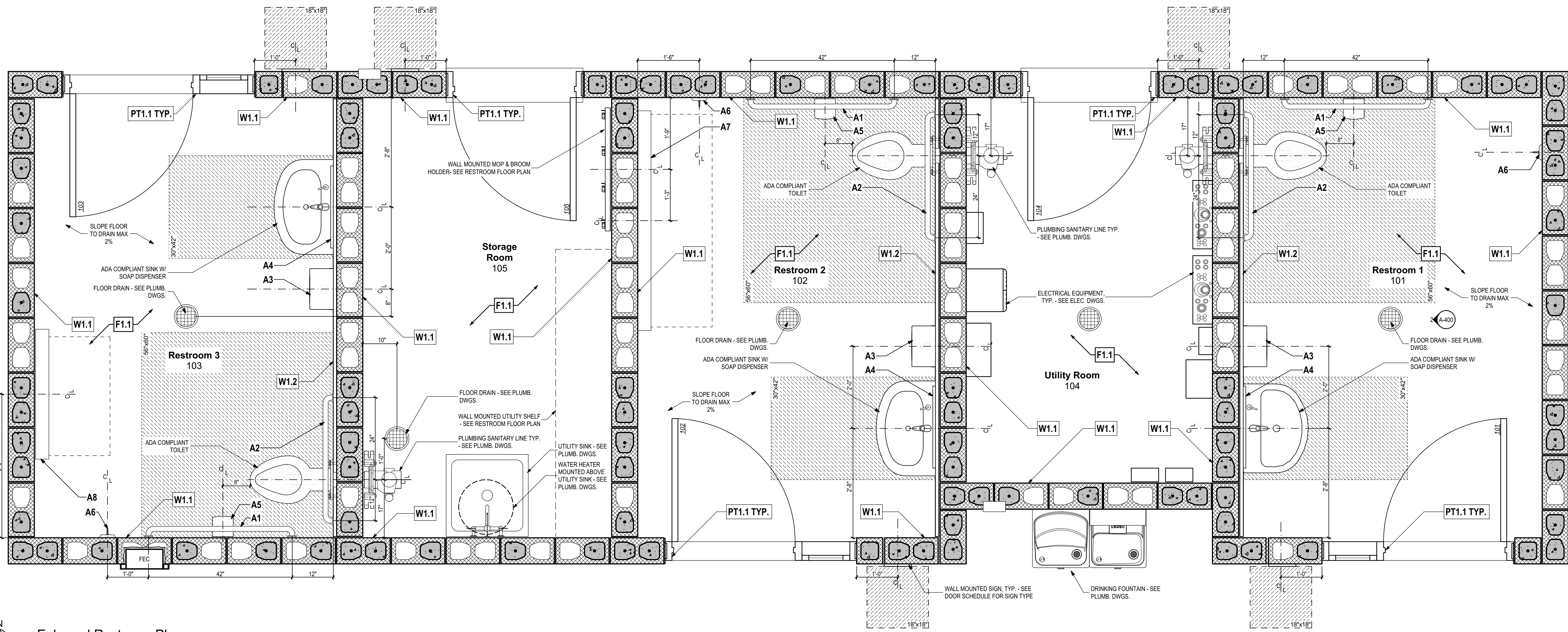
3 Restroom Building Lateral Section
3/8" = 1'-0"



2 Restroom Building Longitudinal Section
3/8" = 1'-0"



1 Restroom Building Longitudinal Section Through Gutter
3/8" = 1'-0"

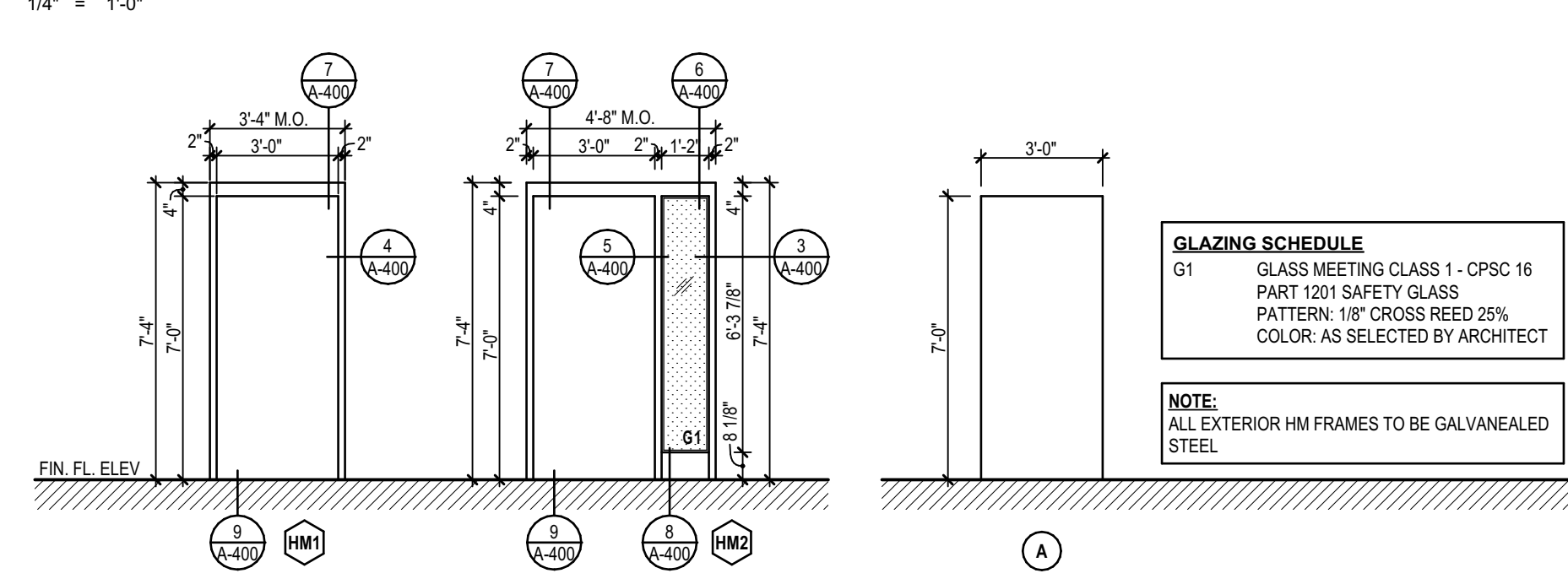


1 Enlarged Restroom Plan
3/4" = 1'-0"

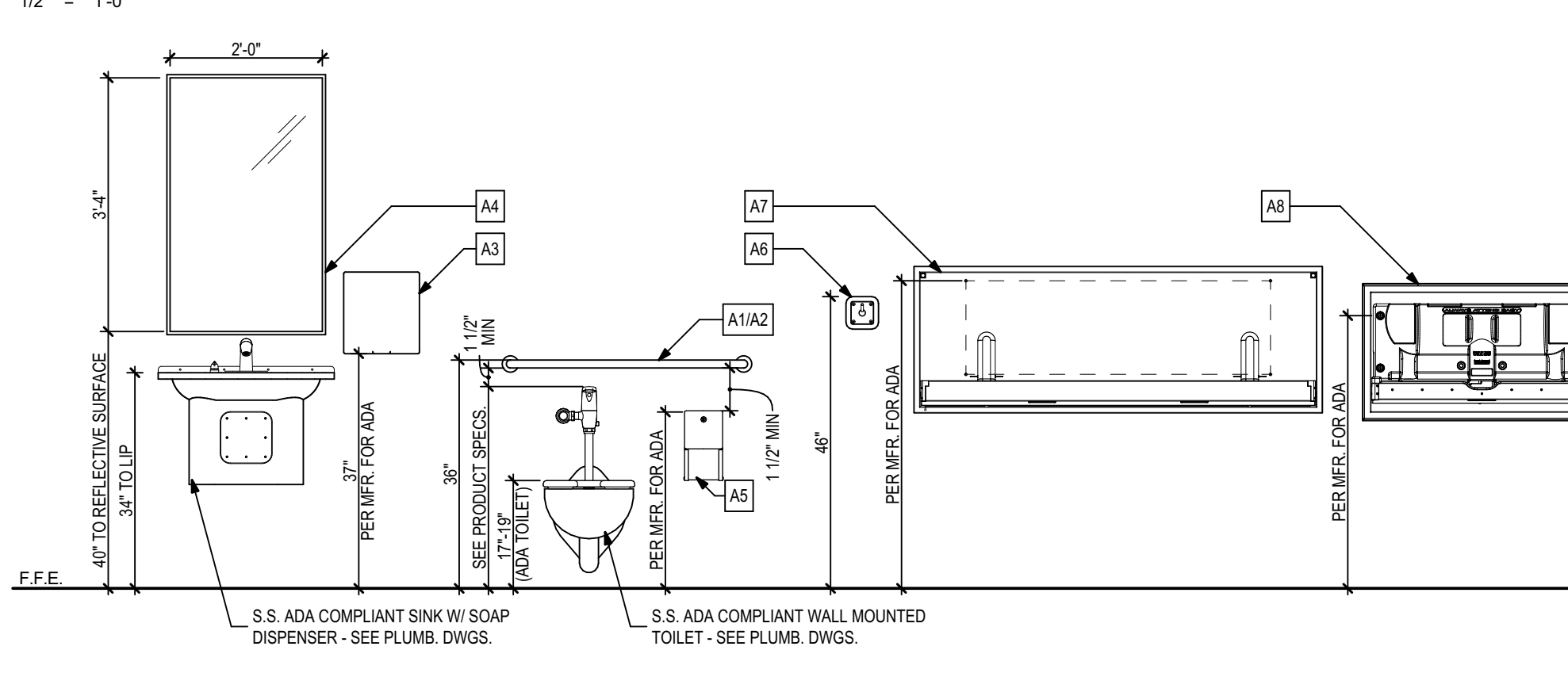
Door Schedule

DOOR NO.	ROOM NAME	DOOR				FRAME			HARDWARE	SIGNAGE	
		ELEVATION	W	HT	MATERIAL	FINISH	ELEVATION	MATERIAL			FINISH
101	Restroom 1	A	3'-0"	7'-0"	HM	PT	HM2	HM	PT	1.0	TYPE 1-A
102	Restroom 2	A	3'-0"	7'-0"	HM	PT	HM2	HM	PT	1.0	TYPE 1-C
103	Restroom 3	A	3'-0"	7'-0"	HM	PT	HM2	HM	PT	1.0	TYPE 1-B
104	Utility Room	A	3'-0"	7'-0"	HM	PT	HM1	HM	PT	2.0	TYPE 2
105	Storage Room	A	3'-0"	7'-0"	HM	PT	HM1	HM	PT	2.0	TYPE 2

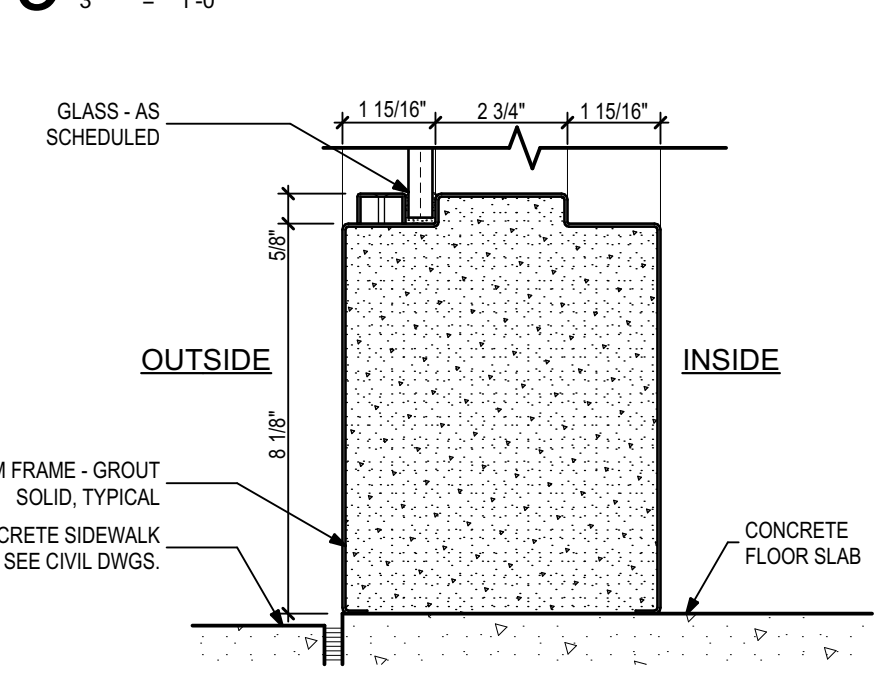
Door and Window Elevations
1/4" = 1'-0"



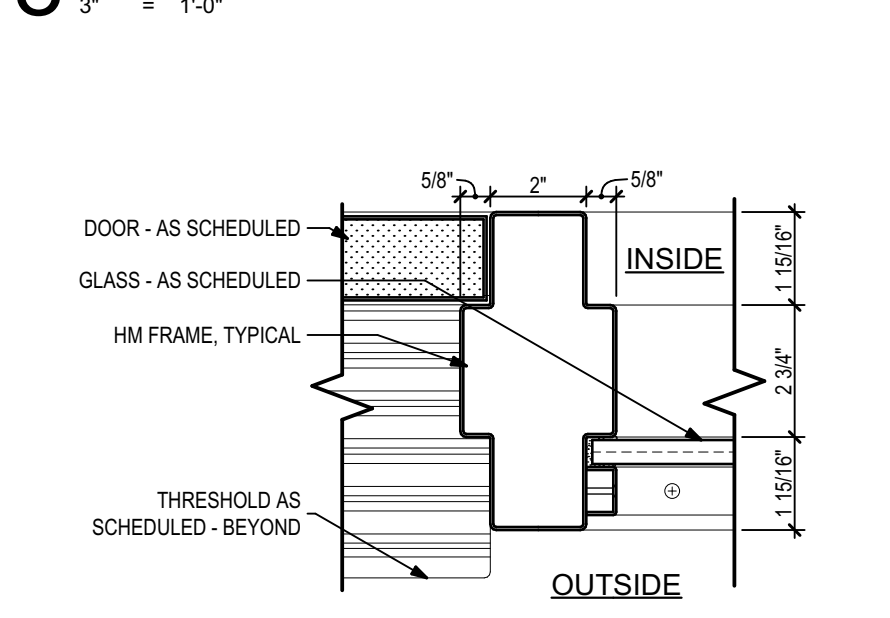
Acc. Mounting Height
1/2" = 1'-0"



9 Door Threshold Detail
3" = 1'-0"



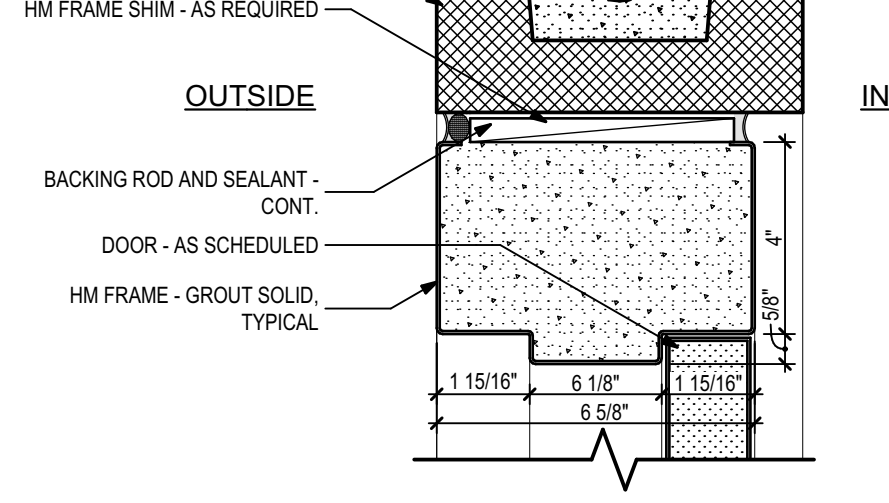
8 Sidelite Sill Detail
3" = 1'-0"



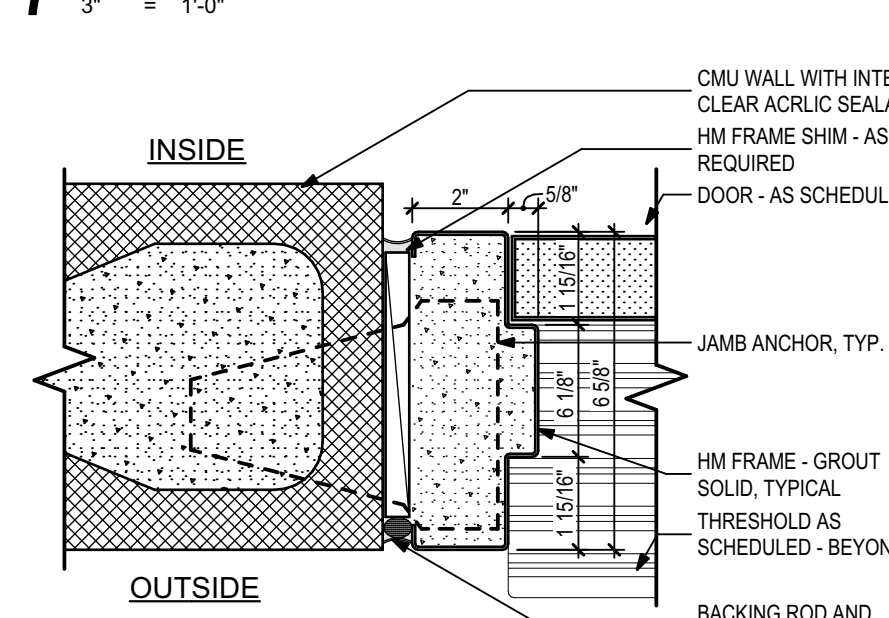
5 Door/Sidelite Jamb Detail
3" = 1'-0"



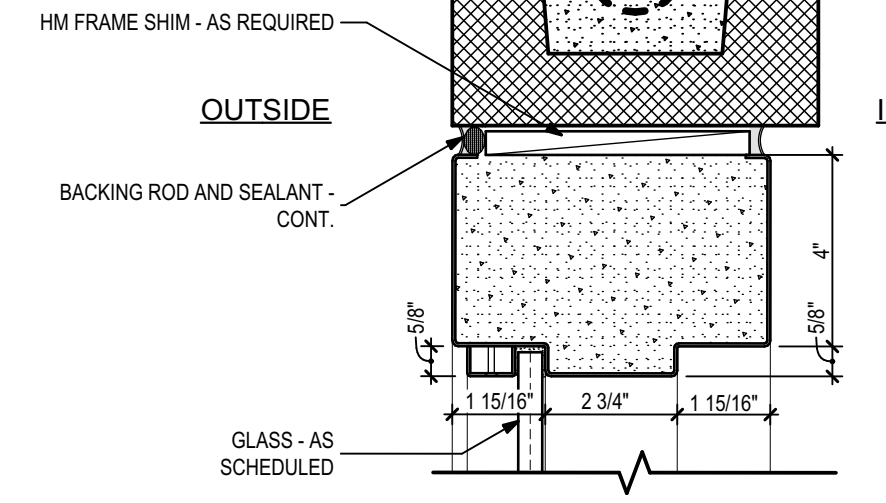
7 Door Head Detail
3" = 1'-0"



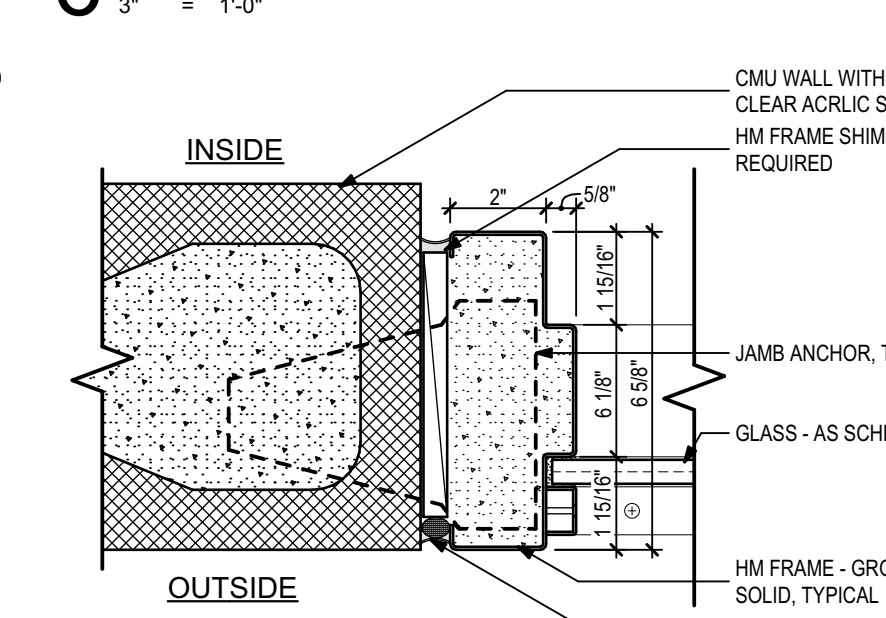
4 Door Jamb Detail
3" = 1'-0"



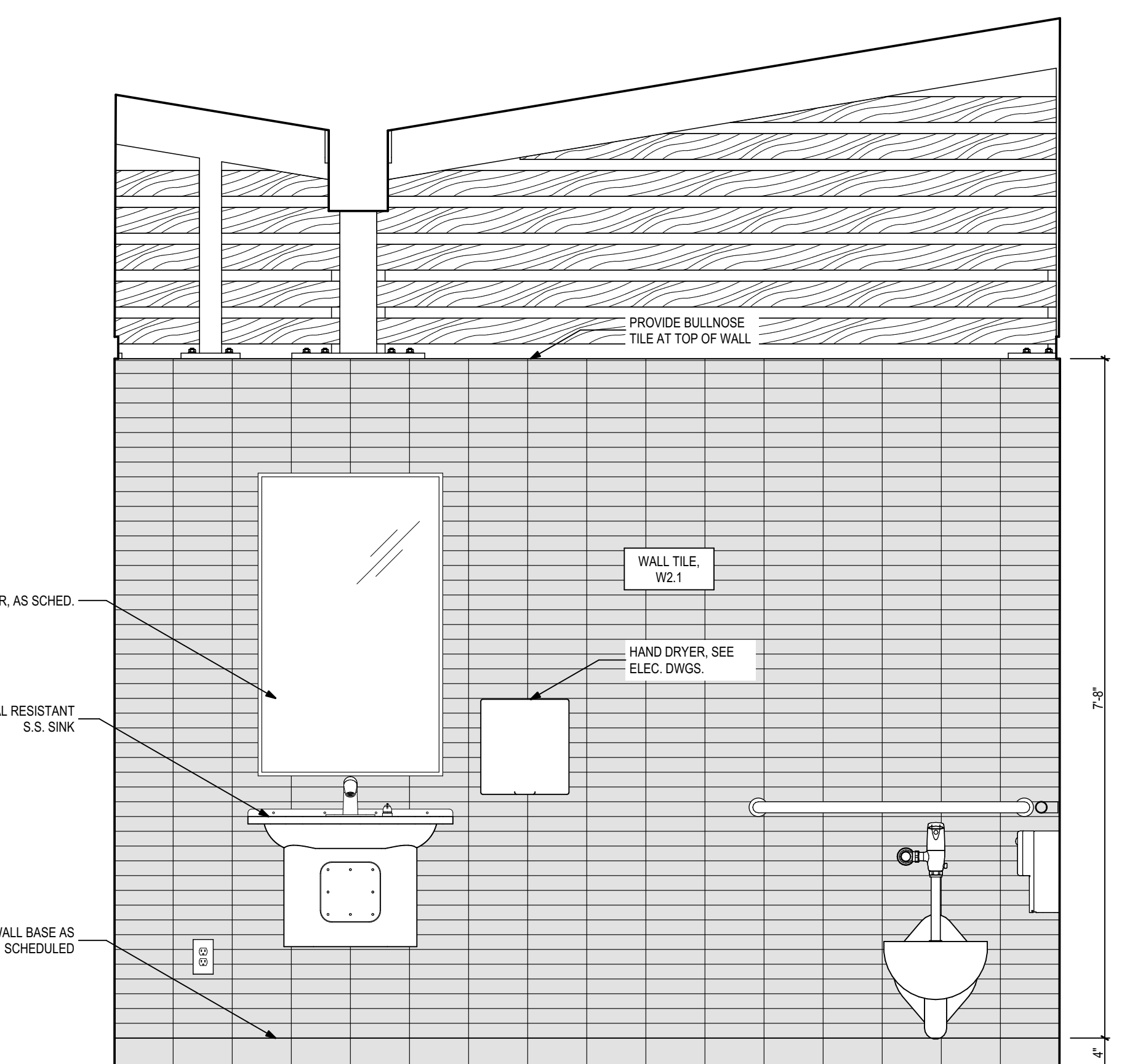
6 Sidelite Head Detail
3" = 1'-0"



3 Sidelite Jamb Detail
3" = 1'-0"



2 Interior Elevation - Typical Wet Wall
3/4" = 1'-0"



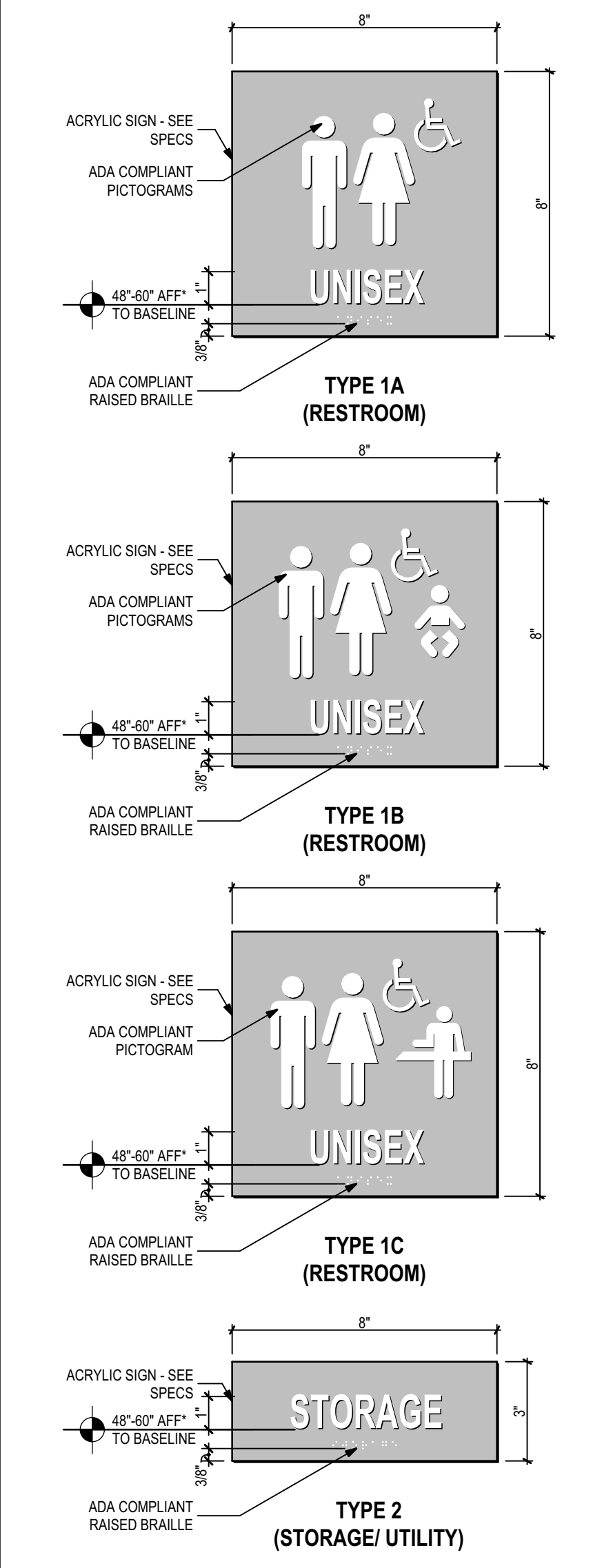
Accessory Schedule

- A1 42" GRAB BAR, 1 1/2" DIA - BRADLEY #812
- A2 36" GRAB BAR, 1 1/2" DIA - BRADLEY #812
- A3 SURFACE MOUNTED ELECTRIC HAND DRYER - XLERATOReco, BRUSHED STAINLESS STEEL FINISH
- A4 MIRROR, FRAMELESS - SEE SPECIFICATIONS
- A5 SURFACE MOUNTED MULTI-ROLL TOILET PAPER DISPENSER - BOBRICK B-4288, STAINLESS STEEL
- A6 VANDAL-RESISTANT COAT HOOK - BOBRICK B-983, STAINLESS STEEL
- A7 SURFACE MOUNTED ADULT CHANGING STATION - FOUNDATIONS MODEL 100SSE-SM, STAINLESS STEEL
- A8 SURFACE MOUNTED BABY CHANGING STATION - FOUNDATIONS MODEL 100SSC-SM, STAINLESS STEEL

Finish Legend

- Floors
F1.1 Concrete Slab - Sealed
- Wall Base
BS.1 Tile Base - Daltile 4"x8" - Style: Color Wheel Linear - Color: Matte Ocean Blue
- Walls
W1.1 Painted CMU - Epoxy - Sherwin Williams SW9109 Natural Liner
W2.1 Wall Tile - Daltile 2"x8" - Style: Color Wheel Linear - Color: Matte Ocean Blue - Installation: Horizontal Stacked Bond
- Ceiling
C1.1 Wood Ceiling - Exterior Semi-Transparent Stain - SW3540 Mountain Ash
- Door Frame Paints
PT1.1 Paint - Sherwin Williams SW9168 Elephant Ear

Signage Elevation



SIGNAGE NOTE:
OWNER TO DETERMINE FINAL ROOM NOMENCLATURE FOR SIGNAGE PACKAGE

PROJECT INFORMATION

MARKET DISTRICT PARK
Tallahassee, Florida

CLIENT:
Blueprint Intergovernmental Agency
315 S. Calhoun Street, Suite 450, Tallahassee, FL 32301

Landscape Architecture = L
HARGREAVES JONES
180 Magazine Street, Cambridge, MA 02139
www.hargreaves.com

Architecture = A
Signage & Wayfinding = W
Architects Lewis + Whitlock
206 W. Virginia Street, Tallahassee, FL 32301
www.think3d.net

Irrigation Design = LI
Civil Engineering = C (through Schematic Design)
Local Landscape Architect
KEITH Engineering Inspired Design
301 Atlantic Boulevard, Pompano Beach, FL 33060
www.keithteam.com

Structural Engineering (Site) = SS
Structural Engineering (Architecture) = SA
Johnson + Milner
1725 Capital Cir NE #301, Tallahassee, FL 32308
www.johnsonmilner.com

Mechanical Engineering (Architecture) = MA
Electrical Engineering (Site) = ES
Electrical Engineering (Architecture) = EA
Plumbing Engineering (Architecture) = PA
H2 Engineering
114 E. 5th Ave, Tallahassee, FL 32303
www.h2engineering.com

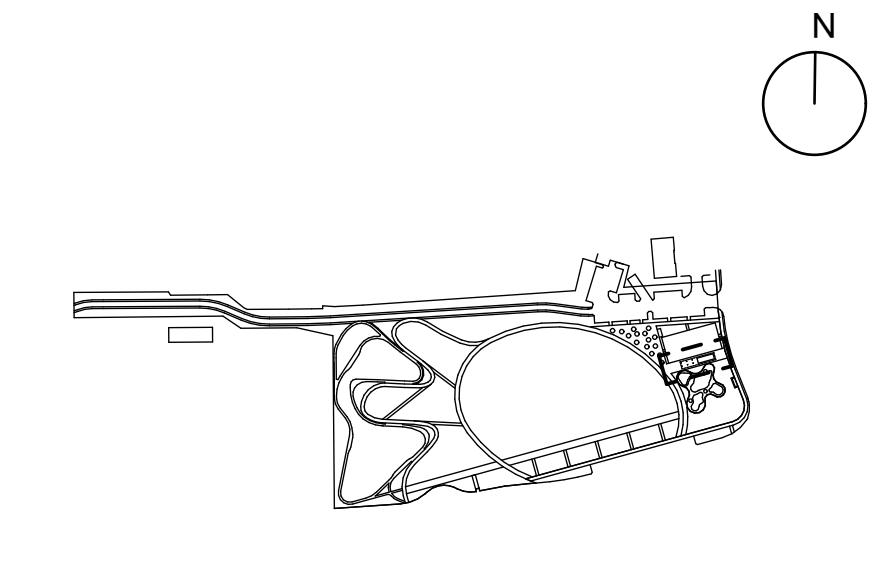
Survey = V
AD Platt
3436 Forward Pass Trail, Tallahassee, FL 32309
www.adplatt.com

SEAL/SIGNATURE

ISSUE/REVISIONS

NO.	DESCRIPTION	DATE
1	ISSUED FOR SCHEMATIC DESIGN	2022/10/28
2	ISSUED FOR DESIGN DEVELOPMENT	2023/01/13
3	ISSUED FOR 90% CD CHECKSET	2023/07/07
4	FINAL BID SET	2024/06/14

KEY MAP



SHEET INFORMATION

Project No.: TMD 2101
Package: FINAL BID SET
Drawn By: B.B.
Checked By: C. WHITLOCK
Date: 2024/06/14
Scale: AS INDICATED

SHEET TITLE

Enlarged Plans, Interior Elevation, Door Schedule, and Details

SHEET NO.

A-400

