

FIXTURE UNIT CALCULATIONS - BATHROOMS

Table with columns: Fixture Type, Quantity, WASTE (UNIT, TOTAL), SUPPLY (COLD, HOT, TOTAL). Rows include: DRINKING FOUNTAIN, LAVATORY (COLD WATER), MOP SERVICE BASIN, WATER CLOSET (FLUSH VALVE), HOSE BIBB / WALL HYDRANT, FLOOR DRAIN.

FIXTURE UNIT CALCULATIONS - WATER PLAY

Table with columns: Fixture Type, Quantity, WASTE (UNIT, TOTAL), SUPPLY (COLD, HOT, TOTAL). Rows include: AQUAHEdra (WATR-1), GEOMISTER SMALL (WATR-2), GEOMISTER MEDIUM (WATR-3), GEOMISTER LARGE (WATR-4), HYDROSPHERE (WATR-5), LEAF CROWN (WATR-6).

HEAT TRACE SCHEDULE

Table with columns: Designation, Service Area, Maintain Temperature, Power Output, Capacity, Approximate Length, Number of Circuits, Electrical Characteristics, MCA / MOP, Manufacturer, Model Number. Includes notes about controller and fire alarm contacts.

FIRESTOP SCHEDULE OF THROUGH PENETRATION SYSTEMS. BASIS OF DESIGN: HILTI, INC.

Table with columns: Type of Penetrant, F-Rating, Concrete Floors, Concrete or Block Walls, Gypsum Walls, Hilti Products. Rows include: Circular Blank Openings, Metal Pipes or Conduit, Non-Metallic Pipe or Conduit, Insulated Pipes, Mixed Penetrants.

- NOTES: 1. JOBSITE CONDITIONS OF EACH THROUGH-PENETRATION FIRESTOP SYSTEM MEET ALL DETAILS OF THE UL-CLASSIFIED SYSTEM SELECTED. 2. IF JOBSITE CONDITIONS DO NOT MATCH ANY UL-CLASSIFIED SYSTEMS IN THE SCHEDULES ABOVE, CONTACT FIRESTOP MANUFACTURER FOR ALTERNATIVE SYSTEMS OR ENGINEER JUDGMENT DRAWINGS. 3. WHERE MORE THAN ONE APPLICABLE UL-CLASSIFIED SYSTEM IS LISTED IN THE SCHEDULES, CHOOSE THE UL SYSTEM WHICH IS MOST ECONOMICAL FOR EACH THROUGH-PENETRATION FIRESTOP SYSTEM. 4. COORDINATE WORK WITH OTHER TRADES TO ENSURE THAT PENETRATION OPENING SIZES ARE APPROPRIATE FOR PENETRANT LOCATIONS, AND VICE-VERSA. 5. ALL THROUGH-PENETRATION FIRESTOPS SHALL BE PROVIDED BY ONE MANUFACTURER APPROVED MANUFACTURERS: HILTI, RECTORSAL, 3M, ILL.

WATER HAMMER ARRESTERS

Diagram showing water hammer arrester locations for grouped fixtures, long runs, and risers. Includes tables for P.D. Water Hammer Arresters and notes on selection methods and standards.

APPLICABLE CODES

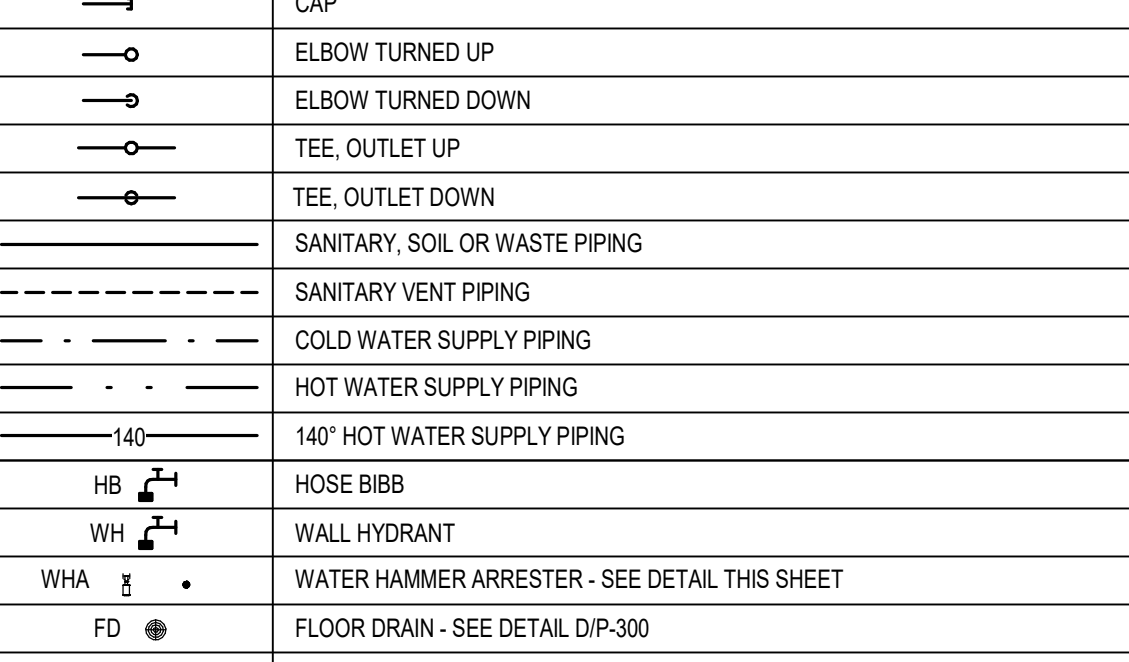
- PERFORM WORK IN ACCORDANCE WITH THE FOLLOWING CODES AND ANY APPLICABLE STATUTES, ORDINANCES, CODES, AND REGULATIONS OF GOVERNMENTAL AUTHORITIES HAVING JURISDICTION. 1. OCCUPATIONAL SAFETY AND HEALTH REGULATIONS (OSHA) a. NATIONAL FIRE CODES b. NFPA 70 c. NFPA 101 d. 2020 FLORIDA BUILDING CODE, 7TH EDITION e. BUILDING CODE f. ENERGY CONSERVATION CODE g. PLUMBING CODE h. ACCESSIBILITY CODE i. FLORIDA STATUTES j. CHAPTER 417 k. CHAPTER 333.80 l. FLORIDA ADMINISTRATIVE CODE m. CHAPTER 61G-15.34 n. CHAPTER 61G-15.34 o. CHAPTER 69A-40

GENERAL NOTES

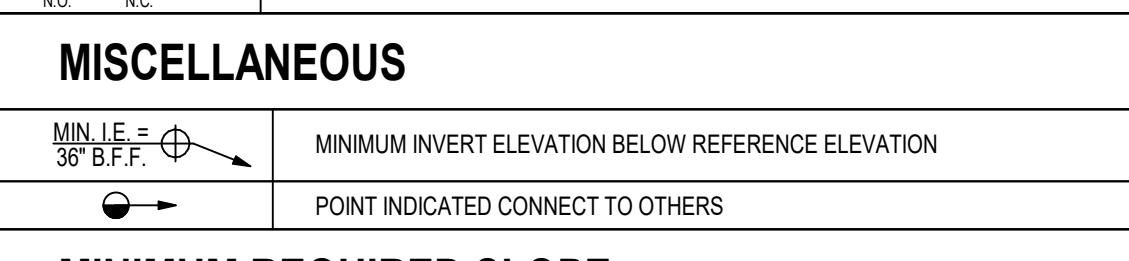
- 1. DRAWINGS ARE DIAGRAMMATIC, INDICATIVE OF WORK TO BE FURNISHED AND INSTALLED UNDER THIS CONTRACT. REFER TO ARCHITECTURAL AND STRUCTURAL DRAWINGS FOR DIMENSIONS. 2. FIELD VERIFY DIMENSIONS AND CONDITIONS. IF THE CONTRACTOR IS UNABLE TO INTERPRET THE CONTRACT DOCUMENTS, HE IS RESPONSIBLE TO REQUEST CLARIFICATION IN WRITING TO THE ARCHITECT. IF THE PROJECTER BEARS RESPONSIBILITY FOR ANY ERROR OR OMISSION, HE SHALL BE HELD RESPONSIBLE FOR DEFICIENCIES ASSOCIATED THEREWITH. 3. BEFORE SUBMITTING FOR THE WORK, EACH BIDDER WILL BE RESPONSIBLE TO EXAMINE THE PERMITS AND SATISFY HIMSELF AS TO THE EXISTING CONDITIONS UNDER WHICH HE WILL BE OBLIGATED TO OPERATE AND COMPLETE THE WORK UNDER THIS CONTRACT. NO ALLOWANCE WILL BE MADE FOR ANY ERROR OR OMISSION ON HIS PART. 4. THE CONTRACTOR SHALL PAY FOR INSPECTION PERMITS, CERTIFICATES, CONNECTION FEES, SYSTEM DEMAND CHARGES AND LICENSE FEES IN CONNECTION WITH HIS WORK. 5. GENERAL CONTRACTOR SHALL BE RESPONSIBLE FOR COORDINATING WORK OF SUBCONTRACTORS TO AVOID INTERFERENCES. 6. WORK SHALL COMPLY WITH APPLICABLE O.S.H.A. AND E.P.A. REGULATIONS AND CODES. 7. ERRECT AND MAINTAIN REASONABLE PRECAUTIONS FOR SAFETY AND HEALTH INCLUDING POSTING DANGER SIGNS AND OTHER WARNINGS AGAINST HAZARDS INCLUDING PROMULGATING SAFETY REGULATIONS. PROVIDE SAFETY PRECAUTIONS AND BARRICADES FOR PEDESTRIANS AT CONSTRUCTION VEHICLE ACCESS AND EGRESS LOCATIONS. 8. THE CONTRACTOR SHALL STRICTLY BE HELD TO THE PROJECT SCHEDULE. HE SHALL PROVIDE SUFFICIENT MANPOWER AND EQUIPMENT TO FULLY MOBLE, PROCEED WITH AND COMPLETE THE WORK. 9. THE CONTRACTOR SHALL BE RESTRICTED TO AREAS SPECIFIED BY THE OWNER FOR ON-SITE STORAGE OF CONSTRUCTION MATERIALS. THE CONTRACTOR IS RESPONSIBLE FOR THE PROTECTION AND SECURITY OF ADJACENT AREAS AND MATERIALS. 10. THE CONTRACTOR SHALL MAINTAIN A CLEAN WORK ENVIRONMENT AT ALL TIMES AND BEFORE FINAL PAYMENT IS MADE. 11. THE CONTRACTOR SHALL FURNISH "AS-BUILT" DRAWINGS TO THE ARCHITECT AT COMPLETION OF CONSTRUCTION. 12. CONTRACTOR'S USE OF AN APPROVAL STAMP ON DOCUMENTS SUBMITTED AS SHOP DRAWINGS, PRODUCT DATA, SAMPLES AND SIMILAR SUBMITTALS CERTIFIES THAT THE CONTRACTOR HAS COMPLIED WITH THIS CONTRACT. CONTRACTOR'S USE OF SUCH APPROVALS SHALL NOT BE DEEMED TO BE SPECIFICALLY INFORMED OF THE ENGINEER IN WRITING OF SUCH DEVIATION AT THE TIME OF SUBMITTAL AND THE ENGINEER HAS GIVEN WRITTEN APPROVAL TO THE SPECIFIC DEVIATION. THE CONTRACTOR SHALL NOT BE RELIEVED OF RESPONSIBILITY FOR ERRORS OR OMISSIONS IN SHOP DRAWINGS, PRODUCT DATA, SAMPLES OR SIMILAR SUBMITTALS BY THE ENGINEER'S APPROVAL THEREOF. 13. THE CONTRACTOR SHALL NOT BE RELIEVED OF RESPONSIBILITY FOR DEVIATIONS FROM REQUIREMENTS OF THE CONTRACT DOCUMENTS BY THE ENGINEER'S APPROVAL OF SHOP DRAWINGS, PRODUCT DATA, SAMPLES OR SIMILAR SUBMITTALS UNLESS THE CONTRACTOR HAS SPECIFICALLY INFORMED THE ENGINEER IN WRITING OF SUCH DEVIATION AT THE TIME OF SUBMITTAL AND THE ENGINEER HAS GIVEN WRITTEN APPROVAL TO THE SPECIFIC DEVIATION. THE CONTRACTOR SHALL NOT BE RELIEVED OF RESPONSIBILITY FOR ERRORS OR OMISSIONS IN SHOP DRAWINGS, PRODUCT DATA, SAMPLES OR SIMILAR SUBMITTALS BY THE ENGINEER'S APPROVAL THEREOF. 14. PROTECT THE ROOF FROM DAMAGE WHICHEVER ANY WORK ON THE ROOF IS REQUIRED. 15. SUPPORTS AND HANGERS SHALL PRESENT A NEAT, ORDERLY APPEARANCE. 16. ROOF MOUNTED EQUIPMENT SHALL BE SECURED TO STRUCTURE TO RESIST A 130 MPH WIND LOAD. 17. CONTRACTOR SHALL MAINTAIN THE INTEGRITY OF ALL FIRE, SMOKE, AND ACoustICAL WALL ASSEMBLIES. 18. BEAM AND FLOOR PENETRATIONS SHALL BE APPROVED BY THE STRUCTURAL ENGINEER. BEAM SLEEVES AND BEAM REINFORCING APPROVED BY STRUCTURAL ENGINEER SHALL BE FURNISHED AND INSTALLED BY THIS CONTRACTOR. 19. CONTRACTOR SHALL FURNISH UL APPROVED DRAWINGS FOR EACH TYPE OF FIRE RATED ASSEMBLY PENETRATION BY DUCTS, PIPES OR CONDUITS. THESE DRAWINGS SHALL BE DISPLAYED ON THE JOB SITE AT ALL TIMES DURING CONSTRUCTION. SEE SPECIFICATIONS. 20. CONTRACTOR SHALL GUARANTEE THE WORK AND MATERIALS FOR A PERIOD OF ONE YEAR FROM DATE OF FINAL ACCEPTANCE. THIS GUARANTEE SHALL BE IN ADDITION TO THE WARRANTIES PROVIDED BY MATERIAL SUPPLIERS AND MANUFACTURERS. 21. EXIT WAYS SHALL BE KEPT CLEAR. IF AN EXIT MUST BE TEMPORARILY BLOCKED, PROVIDE THE REQUIRED BARRICADE AND DIRECTIONAL SIGNS FOR TEMPORARY EXITING AND SAFETY. 22. CONTRACTOR SHALL COMPLY WITH TRENCH SHIELDING ACT (FLORIDA STATUTE 339 PART III) AND OSHA STANDARD 29 CFR 1926.650 SUBPART F FOR ALL UTILITY TRENCHES IN EXCESS OF 5 FEET DEEP. CONTRACTOR SHALL INDICATE WITHIN HIS BID RESPONSE A REFERENCE TO THE TRENCH SAFETY STANDARD AND A SEPARATE LINE ITEM COST OF COMPLIANCE WITH STANDARD.

- RESOLVE IN WRITING, ANY CODE VIOLATION DISCOVERED IN CONTRACT DOCUMENTS WITH THE ENGINEER PRIOR TO BIDDING. AFTER AWARD OF THE CONTRACT, MAKE ANY CORRECTION OR ADDITION NECESSARY FOR COMPLIANCE WITH APPLICABLE CODES IN ADDITIONAL COST TO OWNER. THE CONTRACTOR SHALL INCLUDE IN THE WORK, WITHOUT EXTRA COST TO THE OWNER, ANY LABOR, MATERIALS, SERVICES, APPARATUS, AND DRAWINGS REQUIRED TO COMPLY WITH ALL APPLICABLE LAWS, ORDINANCES, RULES, AND REGULATIONS. WHERE THERE IS A CONFLICT BETWEEN THE CONTRACT DOCUMENTS AND THE APPLICABLE CODES, THE CODES SHALL GOVERN, EXCEPT WHERE THE REQUIREMENTS OF THE CONTRACT DOCUMENTS ARE MORE STRINGENT.

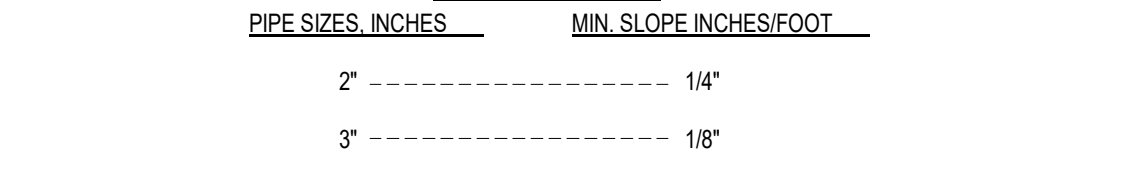
PIPING AND FITTINGS



VALVES



MISCELLANEOUS



MINIMUM REQUIRED SLOPE

Table showing minimum required slope for all drainage piping in inches and feet.

DOMESTIC PIPE CLEANING

- A. CLEAN AND DISINFECT POTABLE DOMESTIC WATER PIPING AS FOLLOWS: 1. PURGE NEW PIPING AND PARTS OF EXISTING PIPING THAT HAVE BEEN ALTERED, EXTENDED, OR REPAIRED BEFORE USING. 2. USE PURGING AND DISINFECTING PROCEDURES PRESCRIBED BY AUTHORITIES HAVING JURISDICTION, IF METHODS ARE NOT PRESCRIBED, USE PROCEDURES DESCRIBED IN EITHER AWWA C651 OR AWWA C652 OR FOLLOW PROCEDURES DESCRIBED BELOW: a. FLUSH PIPING SYSTEM WITH CLEAN, POTABLE WATER UNTIL DIRTY WATER DOES NOT APPEAR AT OUTLETS. b. FILL AND ISOLATE SYSTEM ACCORDING TO EITHER OF THE FOLLOWING: 1. FILL SYSTEM OR PART THEREOF WITH WATER-CHLORINE SOLUTION WITH AT LEAST 50 ppm OF CHLORINE. ISOLATE AND ALLOW TO STAND FOR 24 HOURS. 2. FILL SYSTEM OR PART THEREOF WITH WATER-CHLORINE SOLUTION WITH AT LEAST 200 ppm OF CHLORINE. ISOLATE AND ALLOW TO STAND FOR THREE HOURS. c. FLUSH SYSTEM WITH CLEAN, POTABLE WATER UNTIL NO CHLORINE IS IN WATER COMING FROM SYSTEM AFTER THE STANDING TIME. d. REPEAT PROCEDURES IF BIOLOGICAL EXAMINATION SHOWS CONTAMINATION. e. SUBMIT WATER SAMPLES IN STERILE BOTTLES TO AUTHORITIES HAVING JURISDICTION. B. PREPARE AND SUBMIT REPORTS OF PURGING AND DISINFECTING ACTIVITIES. INCLUDE COPIES OF WATER-SAMPLE APPROVALS FROM AUTHORITIES HAVING JURISDICTION. C. CLEAN INTERIOR OF DOMESTIC WATER PIPING SYSTEM. REMOVE DIRT AND DEBRIS AS WORK PROGRESSES.

ELECTRIC STORAGE WATER HEATERS

Table with columns: Designation, Storage, Heating Element Input (Each), Number of Elements, Simultaneous Operation of Elements, Total Heating Input, Entering Water Temperature, Leaving Water Temperature, Temperature Rise, Recovery Rate, Electrical Characteristics. Includes manufacturer and model number.

- NOTES: 1. PROVIDE LOW WATER CUT-OFF.

THERMOSTATIC MIXING VALVES

Table with columns: Designation, Application, Set Point, Minimum Flow, Maximum Flow, Pressure Drop @ Max Flow, Recirculated System, ASSE Compliance, Manufacturer, Model Number. Includes note about rough brass finish.

PLUMBING FIXTURE SCHEDULE

Table with columns: Fixture Designation, Fixture Description, A.D.A. Compliant, Mounting Method, Height (A.F.F.), Cold Water Supply, Hot Water Supply, Fixture Trap, Fixture Drain, Manufacturer and Model Number, Accessories. Includes notes about supply stops and flexible connections.

PIPING SCHEDULE

Table with columns: Application / System, Size Range (Inches), Piping Materials, Notes. Rows include: Domestic Water (Underground), Domestic Water (Aboveground), Sanitary & Vent (Underground), Sanitary & Vent (Aboveground).

PLUMBING FIXTURE ACCESSORY SCHEDULE

Table with columns: Accessory Tag, Accessory Description, Manufacturer and Model Number. Rows include: Drain SK-GTD, Laundry Sink Faucet, Cast Brass Adjustable P-Tap, Tubing Outlet, Cleanout Plug, Polished Chrome Plated Finish.

PROJECT INFORMATION

MARKET DISTRICT PARK Tallahassee, Florida

CLIENT: Blueprint Intergovernmental Agency 315 S. Calhoun Street, Suite 450, Tallahassee, FL 32301 Landscape Architect = L HARGREAVES JONES 180 Varick Street, Suite 204, New York, NY 10014 www.hargreaves.com

Architecture = A Signage & Wayfinding = W Architects Lewis + Whitlock 206 W. Virginia Street, Tallahassee, FL 32301 www.think3d.net Civil Engineering = C Irrigation Design = LI Local Landscape Architect KEITH Engineering Inspired Design 301 Atlantic Boulevard, Pompano Beach, FL 33060 www.keithteam.com

Structural Engineering (Site) = SS Structural Engineering (Architecture) = SA Johnson + Milner 1725 Capital Cir NE #301, Tallahassee, FL 32308 www.johnsonmilner.com Mechanical Engineering (Architecture) = MA Electrical Engineering (Site) = ES Electrical Engineering (Architecture) = EA H2 Engineering (Architecture) = PA H2 Engineering 114 E. 5th Ave, Tallahassee, FL 32303 www.h2engineering.com

Survey = V AD Platt 3436 Forward Pass Trail, Tallahassee, FL 32309 www.adplatt.com

ABBREVIATIONS

Table mapping abbreviations to full names: CWS (Cold Water Supply), DN (Down), EWC (Electric Water Cooler), FD (Floor Drain), HB (Hose Bibb), HW (Hot Water Supply), IE (Invert Elevation), LV (Lavatory), MSH (Mop Service Basin), MCA (Minimum Circuit Ampacity), MOPP (Maximum Overload Protection), PSAN (Sanitary), PVENT (Vent), N/A (Not Applicable), TYP (Typical), UG (Underground), VTR (Vent Through Roof), WC (Water Closet), WCO (Wall Cleanout), WH (Wall Hydrant), WHA (Water Hammer Arrester), WATR (Water).

PLUMBING NOTES

- 1. INSTALL ALL WORK IN ACCORDANCE WITH THE FLORIDA PLUMBING CODE AND LOCAL PLUMBING CODES. WHERE CONFLICTS OCCUR BETWEEN CODES AND BETWEEN THE CONSTRUCTION DOCUMENTS AND CODES, THE MOST RESTRICTIVE REQUIREMENTS SHALL GOVERN. 2. ALL MISCELLANEOUS EQUIPMENT TO BE FURNISHED UNDER OTHER SECTIONS OF THE SPECIFICATIONS THAT REQUIRE PIPING OR DUCT CONNECTIONS SHALL BE RECEIVED AND SET WITH ROUGH-IN AND FINAL CONNECTIONS MADE UNDER THESE SECTIONS. 3. PRESSURE TEST ALL WATER PIPING SYSTEMS AT 150% OF NORMAL WORKING PRESSURE. 4. ALL COPPER PRESSURE PIPE SHALL BE SOLDERED ENTIRELY WITH LEAD-FREE SOLDER. 5. INSTALLATION OF EQUIPMENT AND PIPING SHALL PROVIDE CONVENIENT ACCESS FOR MAINTENANCE. 6. ALL FLOOR DRAINS AND FLOOR SINKS SHALL HAVE MINIMUM 3/4" DRAIN LINES, DEEP SEAL TRAPS AND AUTOMATIC TRAP PRIMERS (MANUFACTURER, PRECISION PLUMBING PRODUCTS). 7. WATER HAMMER ARRESTERS SHALL BE INSTALLED IN ACCORDANCE WITH PD-WH201. 8. ALL HOSE BIBBS, SILL COCKS AND/OR FAUCETS WITH HOSE CONNECTIONS SHALL HAVE A VACUUM BREAKER. 9. GRAVITY FLOW SYSTEMS HAVE SPACE PRIORITY FOR SLOPING PIPES. HOWEVER SLOPE MUST BE STARTED AT HIGHEST POINT POSSIBLE. 10. ALL WATER PIPING SUBJECT TO FREEZING SHALL BE FREEZE PROTECTED. THIS INCLUDES ALL PIPING IN UNHEATED SPACES SUCH AS EQUIPMENT ROOMS, CHASES, ATTICS, SOFFITS, CRAWL SPACES, EXTERIOR WALLS, CELLINGS, ETC. 11. INSULATE EXTERIOR ABOVE GRADE WATER PIPING WITH CELLULAR GLASS. SEE SPECS. 12. DO NOT LOCATE FLOOR DRAINS/SINKS UNDER EQUIPMENT. COORDINATE EXACT LOCATION OF DRAINS/SINKS WITH EQUIPMENT FURNISHER. 13. ALL PLUMBING VENTS SHALL BE 2" MINIMUM, UNLESS NOTED OTHERWISE. 14. PROVIDE ACCESS PANELS AT EACH LOCATION WHERE A VALVE OR OTHER DEVICE REQUIRING SERVICE IS LOCATED ABOVE AN INACCESSIBLE CEILING OR INSIDE A WALL. ACCESS PANEL SHALL BE RATED IF INSTALLED IN A FIRE RATED CEILING OR WALL. 15. A CLEANOUT SHALL BE PROVIDED AT THE BASE OF EACH WASTE, SOIL STACK OR RAIN LEADER. WHETHER SHOWN ON THE DRAWINGS OR NOT. 16. ANY PIPE THAT PASSES UNDER A FOOTING OR THROUGH A FOUNDATION WALL SHALL BE PROVIDED WITH A RELIEVING ARCH, OR A PIPE SLEEVE. SLEEVE SHALL BE BUILT INTO THE FOUNDATION WALL. THE SLEEVE SHALL BE TWO PIPE SIZES GREATER THAN THE PIPE PASSING THROUGH THE WALL. 17. LOCATIONS OF EXISTING BELOW GRADE OR CONCEALED UTILITIES ARE BASED ON REFERENCE MATERIALS PROVIDED TO THE ENGINEER AND HAVE NOT BEEN VERIFIED. CONTRACTOR SHALL LOCATE CONCEALED ELEMENTS AND NOTIFY ENGINEER IF VARIANCES BETWEEN THESE DOCUMENTS AND ACTUAL FIELD CONDITIONS EXIST AND MAY MATERIALLY AFFECT THE DESIGN INTENT.

DRAWING INDEX

Table with columns: Drawing Number, Description. Rows include: PA-001 (General Notes & Legends), PA-100 (Site Plan), PA-101 (Floor Plans), PA-300 (Details).

SHEET INFORMATION

Project No.: TMD 2101 Package: FINAL BID SET Drawn By: JLR Checked By: SRD Date: 2024/06/14

SHEET TITLE

GENERAL NOTES & LEGENDS

SHEET NO.

PA-001

ENGINEERING logo and address: 114 EAST 5th AVENUE TALLAHASSEE, FL 32303 PHONE 850.224.7922 www.H2Engineering.com H2E PROJECT NO. 21123 THIS DOCUMENT IS THE PROPERTY OF H2Engineering AND IS PREPARED AS AN INSTRUMENT OF SERVICE. ITS USE, REUSE OR REPRODUCTION, EXCEPT BY WRITTEN AGREEMENT WITH H2ENGINEERING, INC., IS PROHIBITED.



① SITE PLAN  
1" = 20'-0"

PROJECT INFORMATION

**MARKET DISTRICT PARK**  
Tallahassee, Florida

CLIENT:  
Blueprint Intergovernmental Agency  
315 S. Calhoun Street, Suite 450, Tallahassee, FL 32301

Landscape Architecture = L  
**HARGREAVES JONES**  
180 Varick Street, Suite 204, New York, NY 10014  
www.hargreaves.com

Architecture = A  
Signage & Wayfinding = W  
**Architects Lewis + Whitlock**  
206 W. Virginia Street, Tallahassee, FL 32301  
www.think3d.net

Civil Engineering = C  
Irrigation Design = LI  
Local Landscape Architect  
**KEITH Engineering Inspired Design**  
301 Atlantic Boulevard, Pompano Beach, FL 33060  
www.keithteam.com

Structural Engineering (Site) = SS  
Structural Engineering (Architecture) = SA  
**Johnson + Milner**  
1725 Capital Cir NE #301, Tallahassee, FL 32308  
www.johnsonmilner.com

Mechanical Engineering (Architecture) = MA  
Electrical Engineering (Site) = ES  
Electrical Engineering (Architecture) = EA  
Plumbing Engineering (Architecture) = PA  
**H2 Engineering**  
114 E. 5th Ave, Tallahassee, FL 32303  
www.h2engineering.com

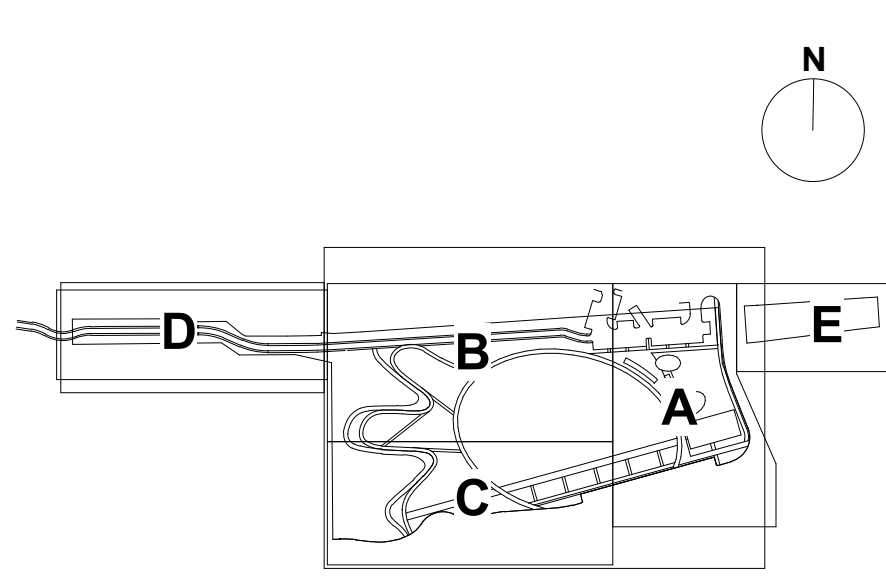
Survey = V  
**AD Platt**  
3436 Forward Pass Trail, Tallahassee, FL 32309  
www.adplatt.com

SEAL/SIGNATURE  
Florida Registry #2485  
Scott R. Drury, P.E. #88845

ISSUE/REVISIONS

NO.	DESCRIPTION	DATE
1	ISSUED FOR SCHEMATIC DESIGN (0%)	2022/10/28
2	ISSUED FOR DESIGN DEVELOPMENT (60%)	2023/01/27
3	ISSUED FOR ENVIRONMENTAL MANAGEMENT PLAN	2023/03/30
4	ISSUED FOR 90% CD CHECKSET	2023/07/07
6	ISSUED FOR 100% CD	2023/09/25
6	ISSUED FOR EMP RESUBMISSION 1	2023/09/25
7	ISSUED FOR EMP RESUBMISSION 2	2023/12/04
8	FINAL BID SET	2024/06/14

KEY MAP



SHEET INFORMATION

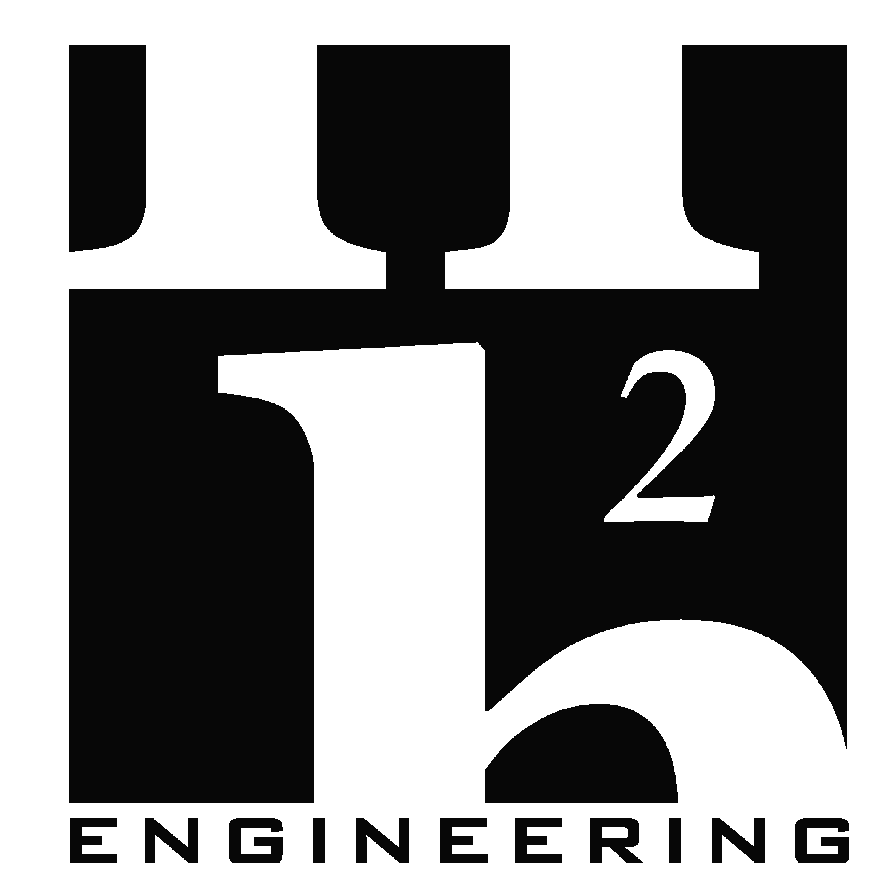
Project No.: TMD 2101  
Package: FINAL BID SET  
Drawn By: JLR  
Checked By: SRD  
Date: 2024/06/14

SHEET TITLE

**SITE PLAN**

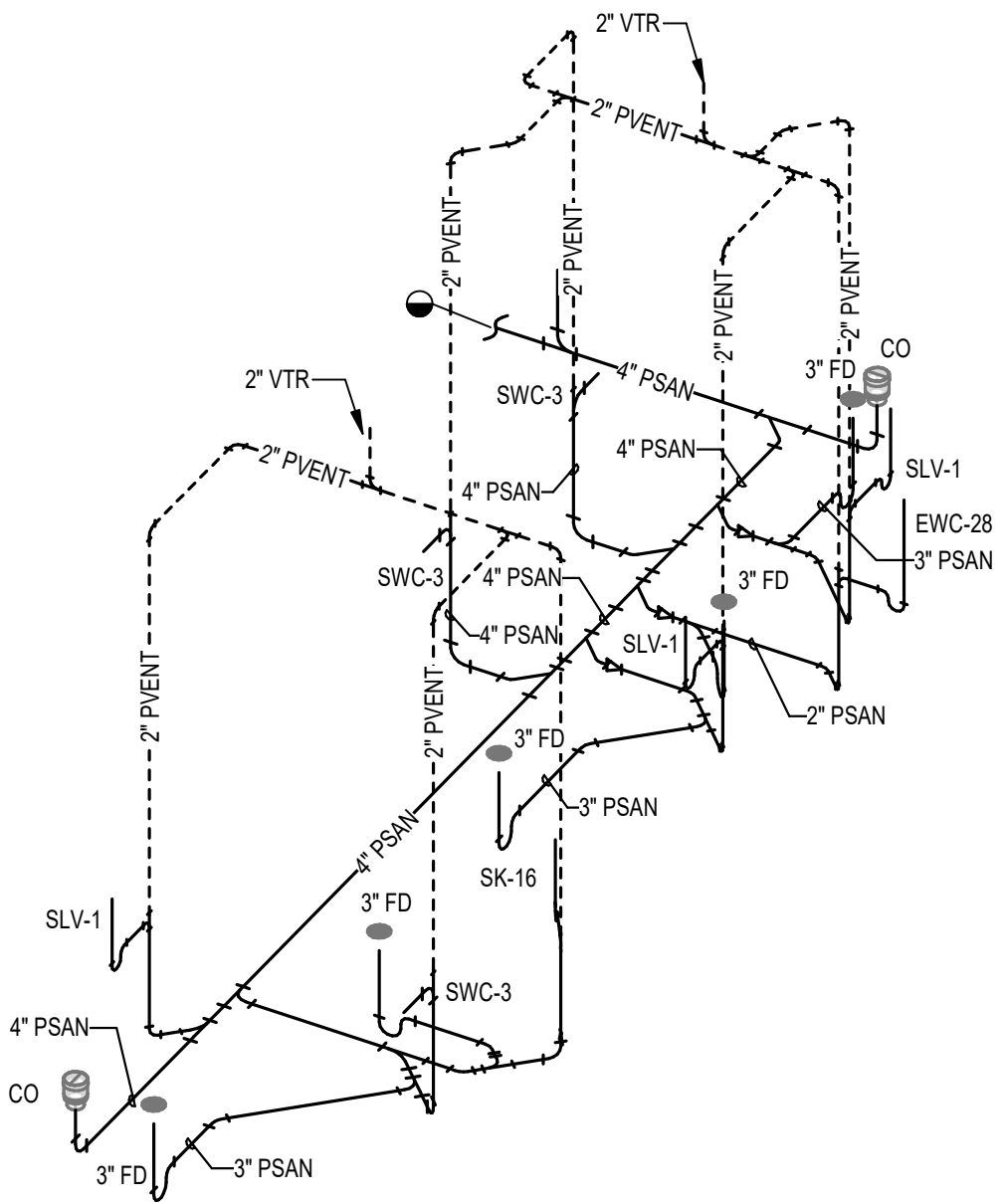
SHEET NO.

**P-100**

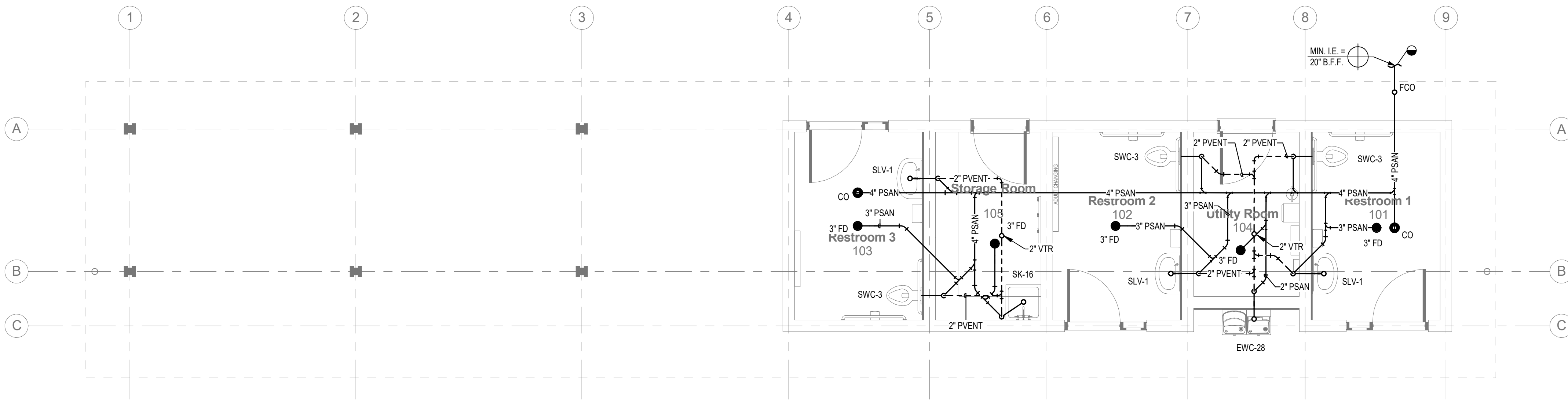


114 EAST 9th AVENUE  
TALLAHASSEE, FL 32303  
PHONE 850.224.7922  
www.H2Engineering.com  
H2E PROJECT No. 21123  
THIS DOCUMENT IS THE PROPERTY OF H2Engineering  
AND IS PREPARED AS AN INSTRUMENT OF SERVICE. ITS  
USE, REUSE OR REPRODUCTION, EXCEPT BY WRITTEN  
AGREEMENT WITH H2ENGINEERING, INC., IS PROHIBITED.

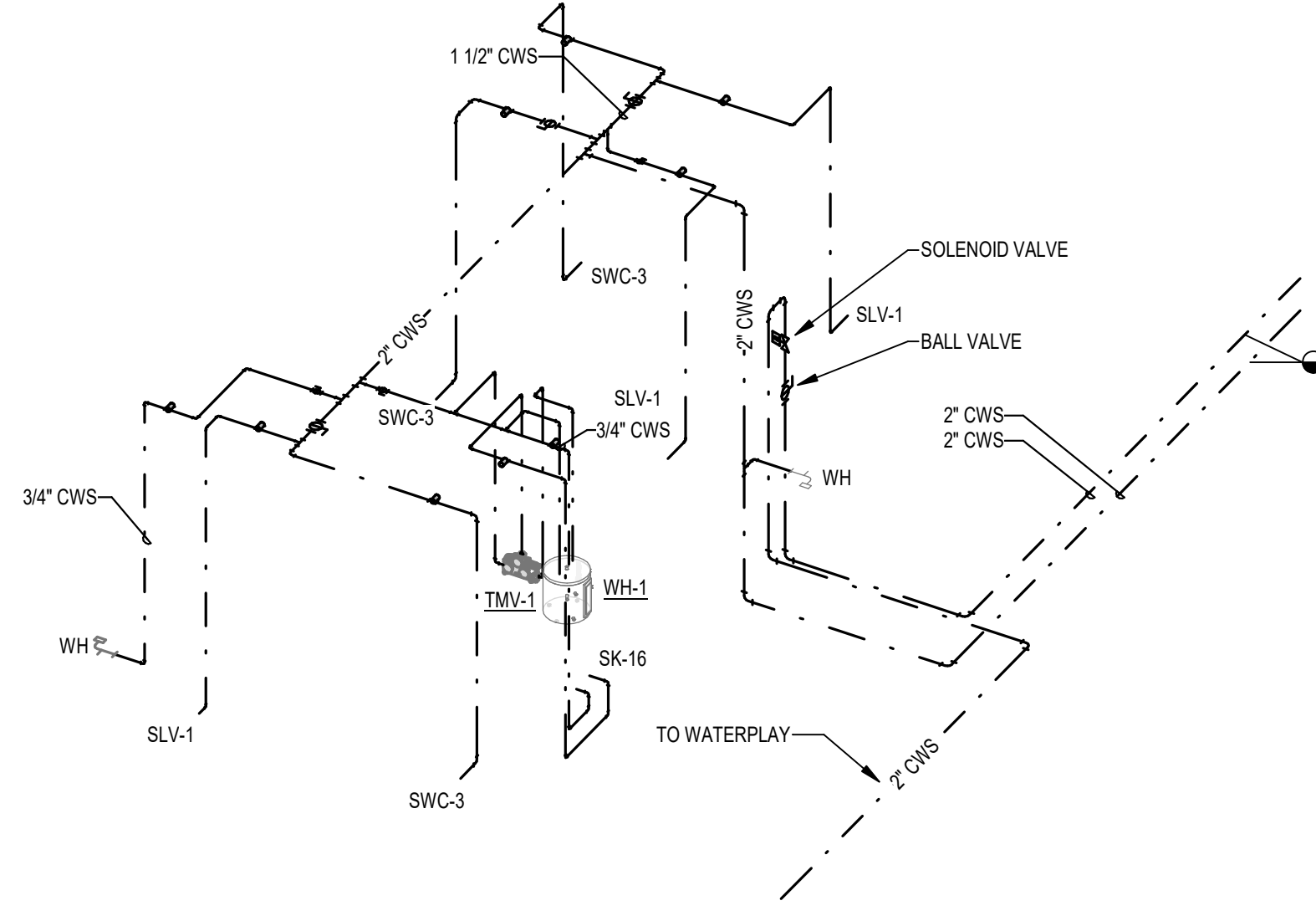




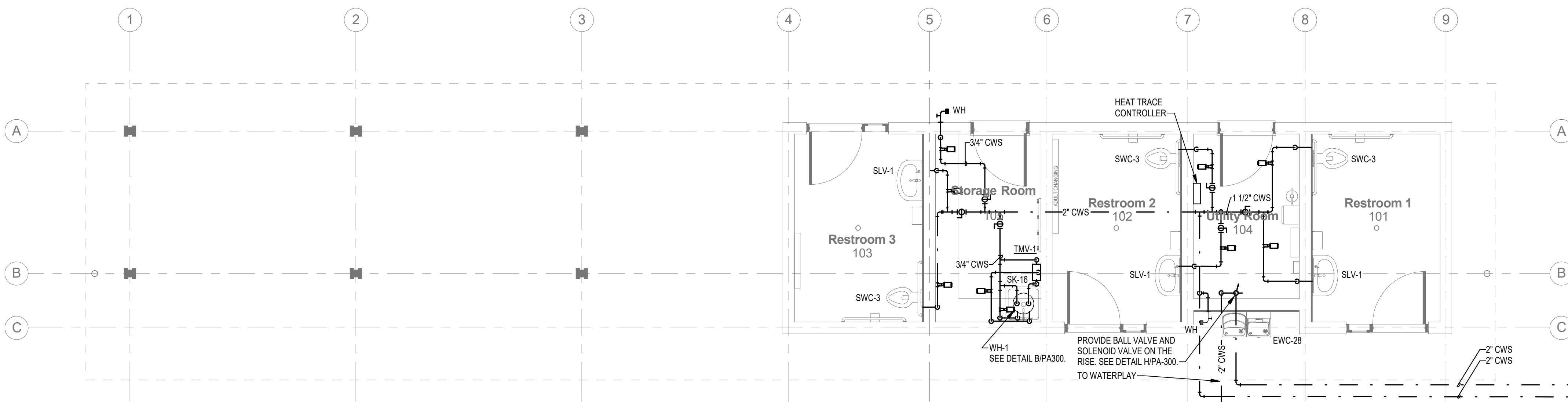
4 SANITARY AND VENT RISER



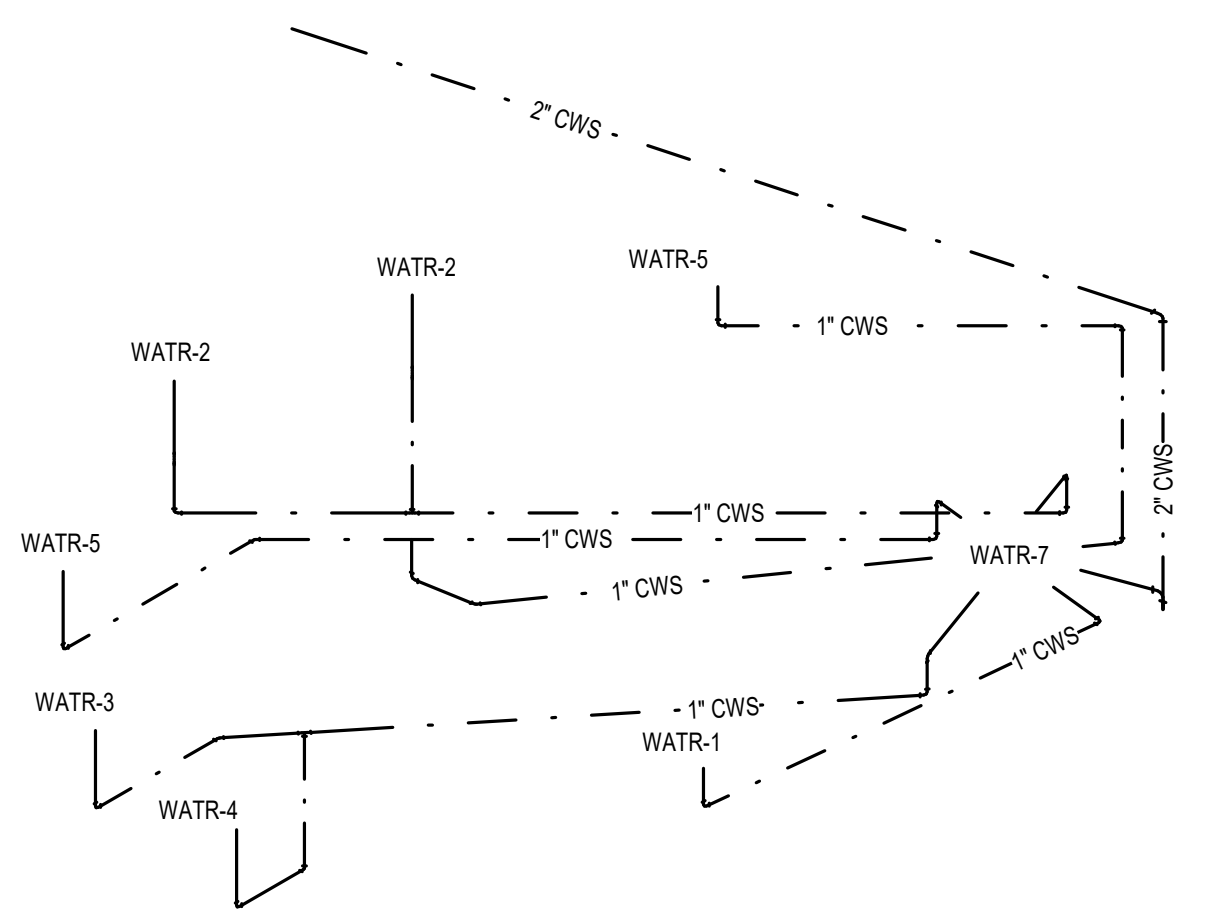
1 FLOOR PLAN - WASTE & VENT  
1/4" = 1'-0"



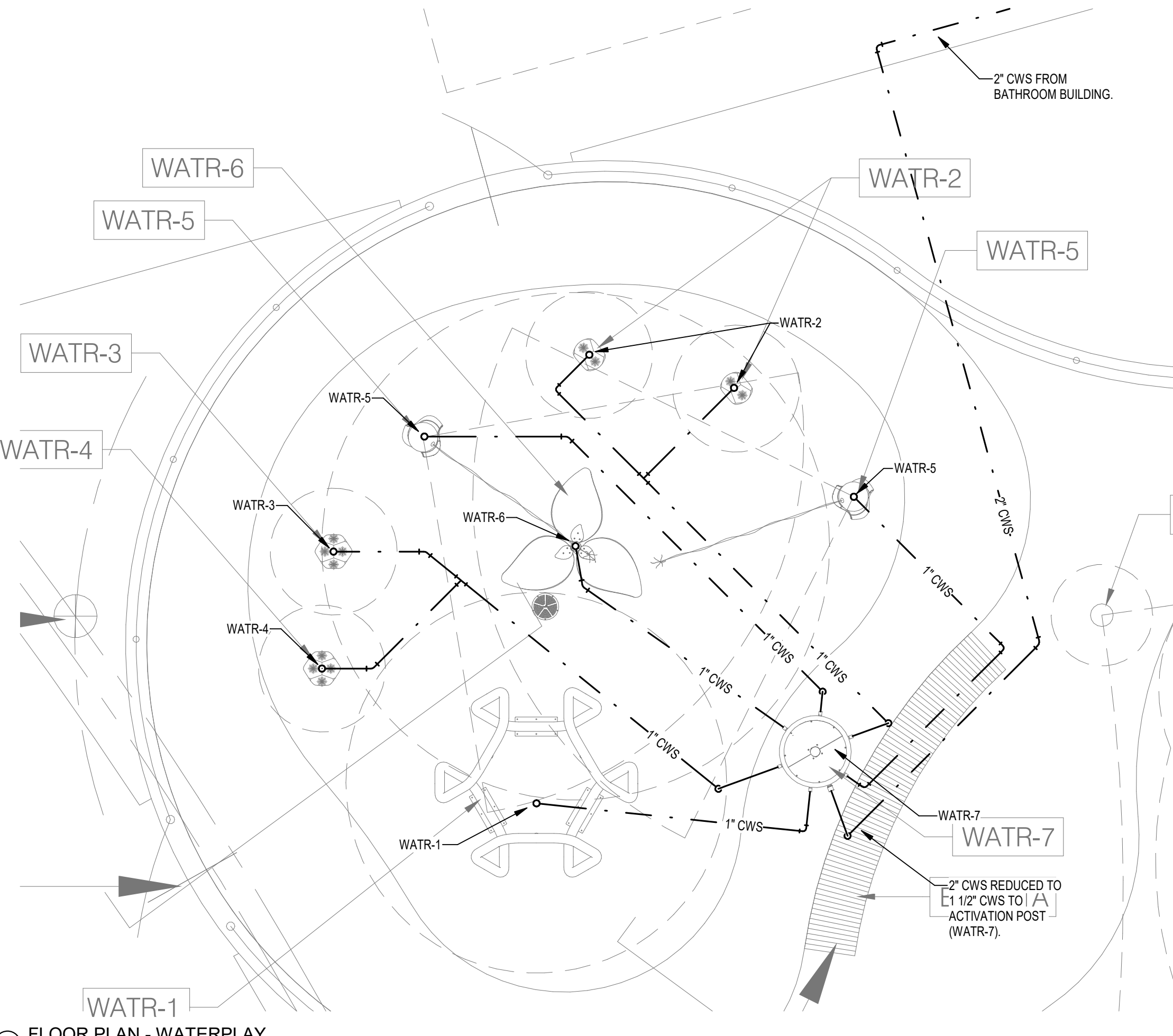
5 SUPPLY RISER



2 FLOOR PLAN - SUPPLY  
1/4" = 1'-0"



6 WATERPLAY SUPPLY RISER



3 FLOOR PLAN - WATERPLAY  
1/4" = 1'-0"

PROJECT INFORMATION

**MARKET DISTRICT PARK**  
Tallahassee, Florida

CLIENT:  
Blueprint Intergovernmental Agency  
315 S. Calhoun Street, Suite 450, Tallahassee, FL 32301

Landscape Architecture = L  
HARGREAVES JONES  
180 Varick Street, Suite 204, New York, NY 10014  
www.hargreaves.com

Architecture = A  
Signage & Wayfinding = W  
Architects Lewis + Whitlock  
206 W. Virginia Street, Tallahassee, FL 32301  
www.think3d.net

Civil Engineering = C  
Irrigation Design = LI  
Local Landscape Architect  
KEITH Engineering Inspired Design  
301 Atlantic Boulevard, Pompano Beach, FL 33060  
www.keithteam.com

Structural Engineering (Site) = SS  
Structural Engineering (Architecture) = SA  
Johnson + Miller  
1725 Capital Cir NE #301, Tallahassee, FL 32308  
www.johnsonmiller.com

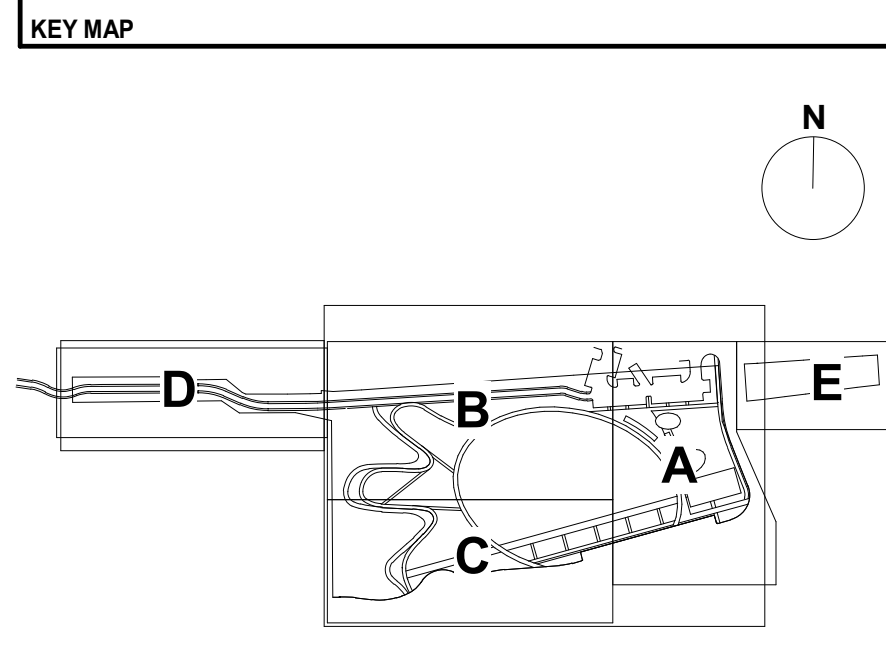
Mechanical Engineering (Architecture) = MA  
Electrical Engineering (Site) = ES  
Electrical Engineering (Architecture) = EA  
Plumbing Engineering (Architecture) = PA  
H2 Engineering  
114 E. 5th Ave, Tallahassee, FL 32303  
www.h2engineering.com

Survey = V  
AD Platt  
3436 Forward Pass Trail, Tallahassee, FL 32309  
www.adplatt.com

SEAL/SIGNATURE  
Florida Registry #2485  
Scott R. Drury, P.E. #88845

ISSUE/REVISIONS

NO.	DESCRIPTION	DATE
1	ISSUED FOR SCHEMATIC DESIGN (30%)	2022/10/28
2	ISSUED FOR DESIGN DEVELOPMENT (60%)	2023/01/27
3	ISSUED FOR ENVIRONMENTAL MANAGEMENT PLAN	2023/03/30
4	ISSUED FOR 90% CD CHECKSET	2023/07/07
5	ISSUED FOR 100% CD	2023/09/25
6	ISSUED FOR EMP RESUBMISSION 1	2023/09/25
7	ISSUED FOR EMP RESUBMISSION 2	2023/12/04
8	FINAL BID SET	2024/06/14



SHEET INFORMATION

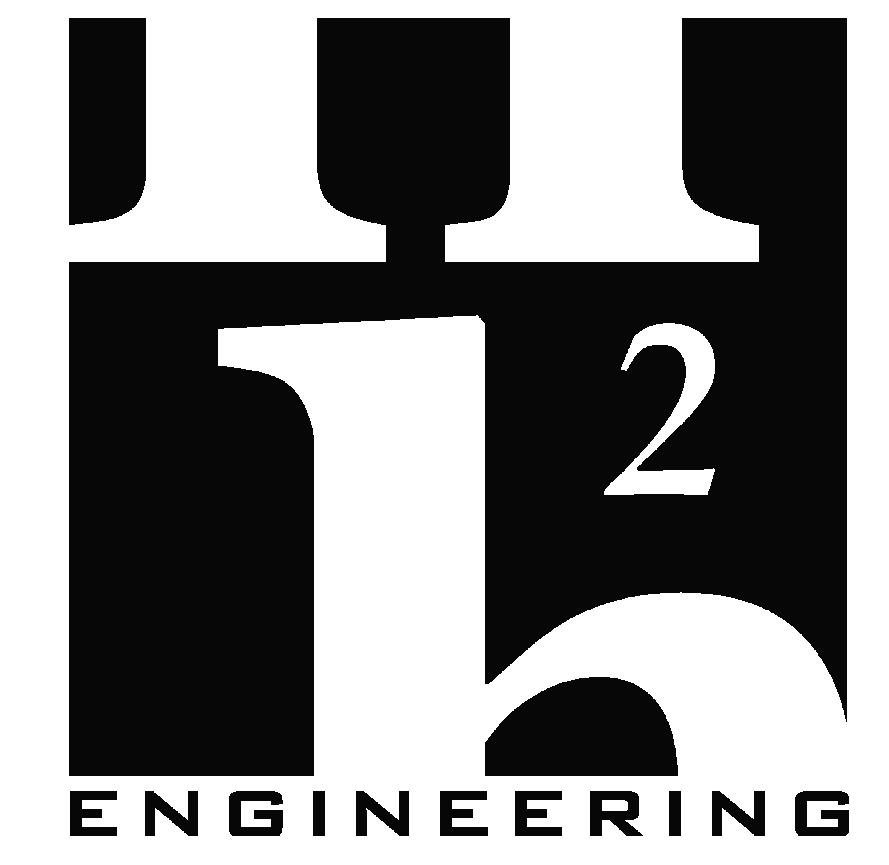
Project No.:	TMD 2101
Package:	FINAL BID SET
Drawn By:	JLR
Checked By:	SRD
Date:	2024/06/14

SHEET TITLE

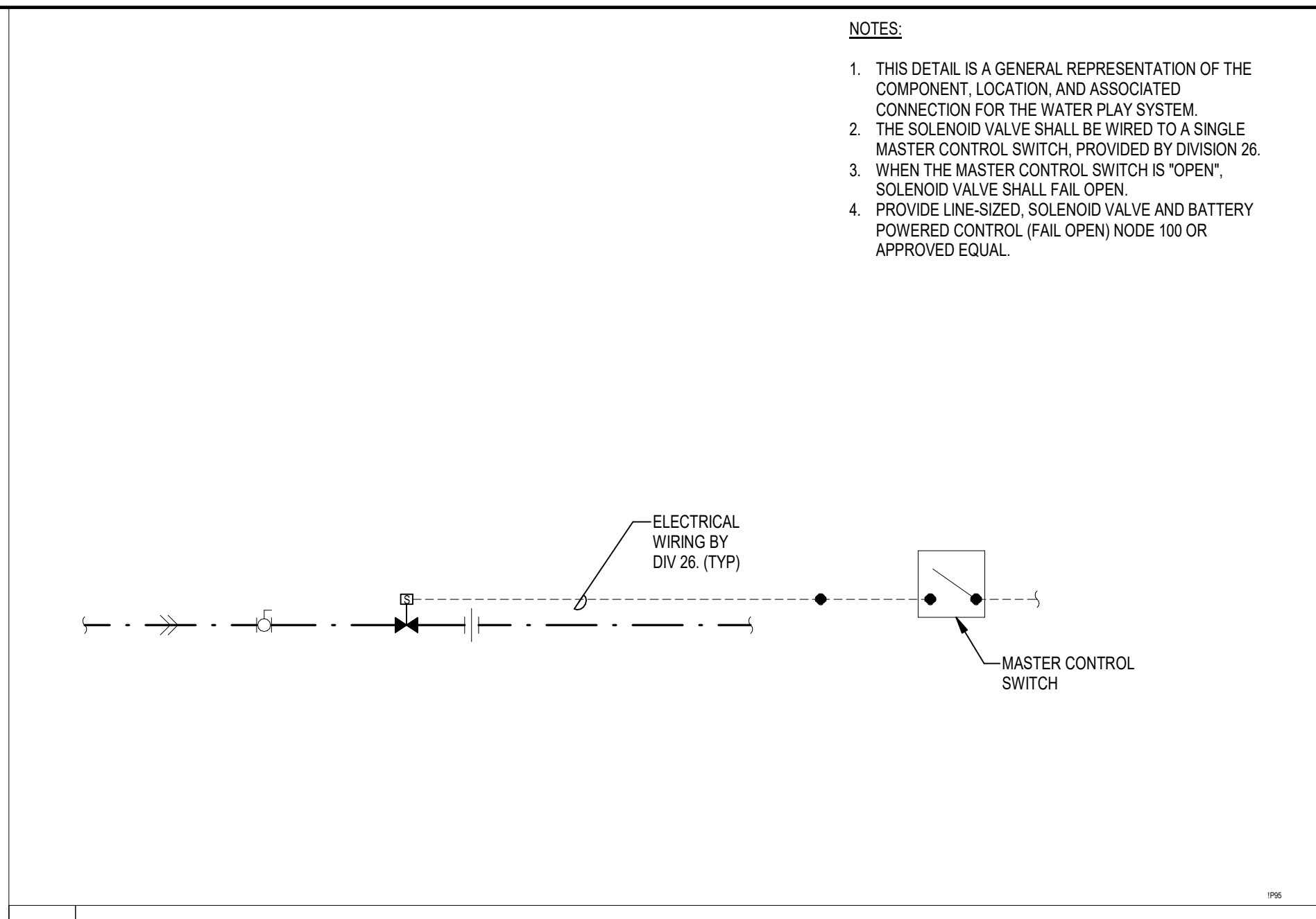
FLOOR PLANS

SHEET NO.

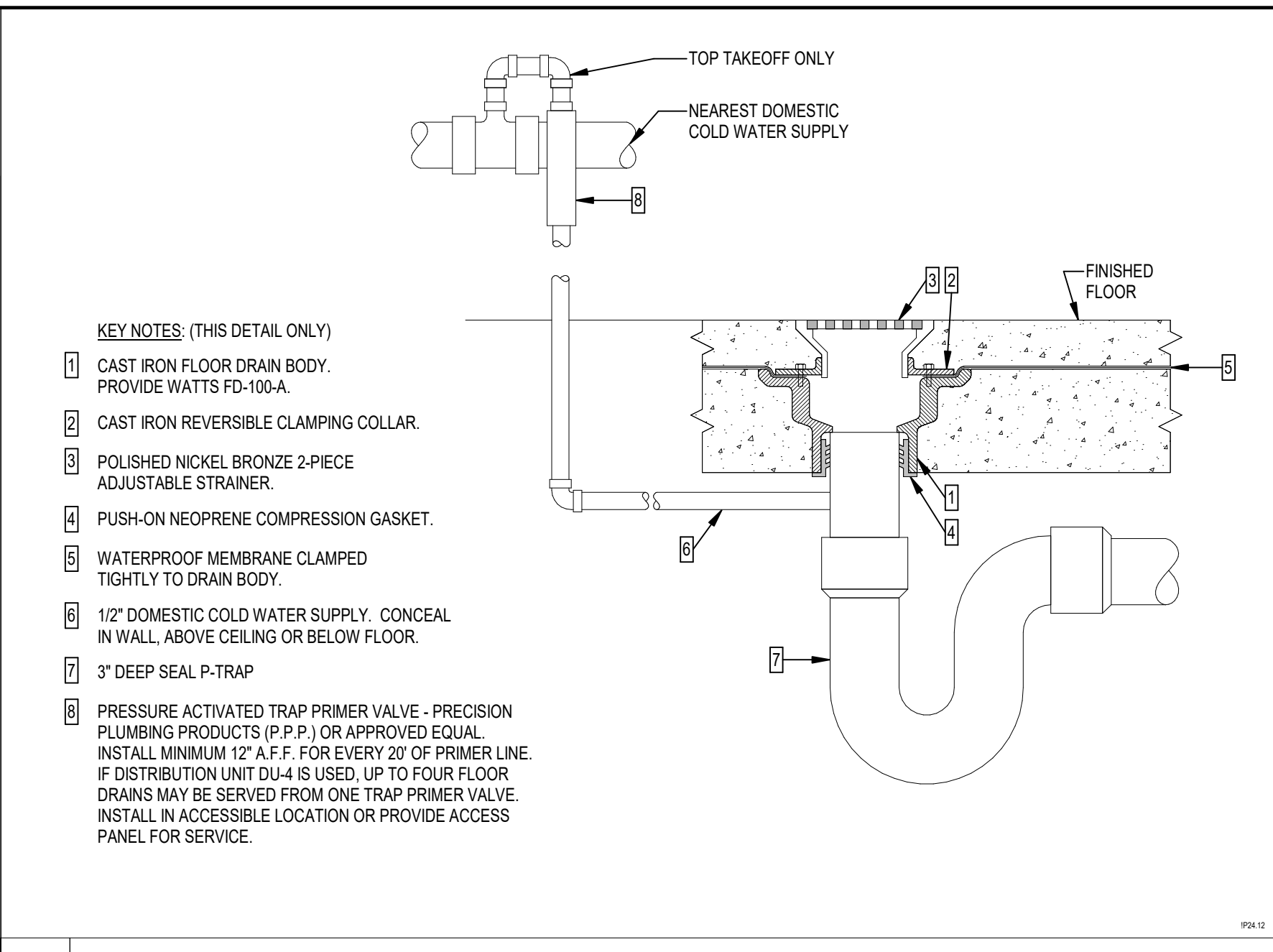
PA-101



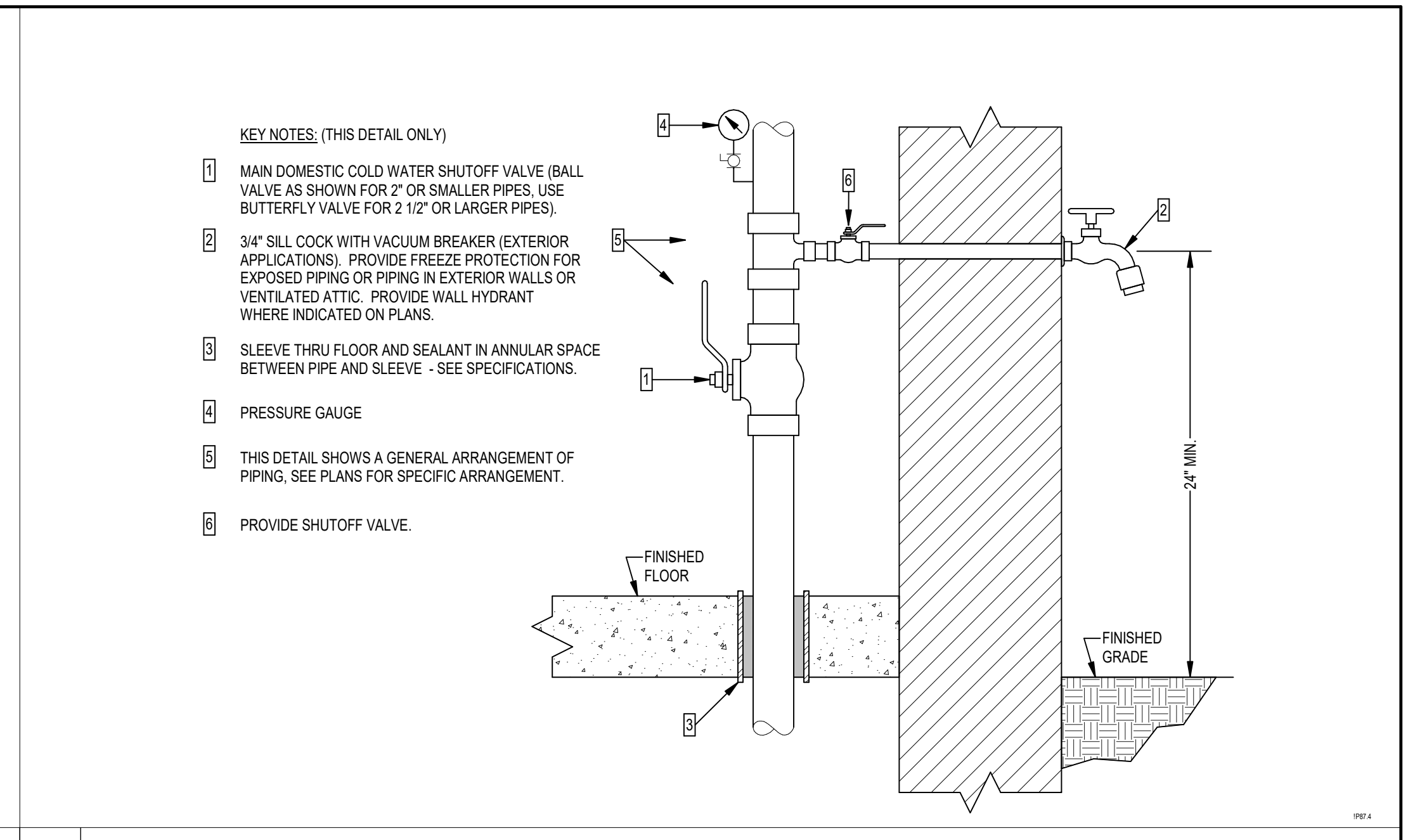
114 EAST 5th AVENUE  
TALLAHASSEE, FL 32303  
PHONE 850.224.7922  
www.H2Engineering.com  
H2E PROJECT No. 21123  
THIS DOCUMENT IS THE PROPERTY OF H2Engineering  
AND IS PREPARED AS AN INSTRUMENT OF SERVICE. ITS  
USE, REUSE OR REPRODUCTION, EXCEPT BY WRITTEN  
AGREEMENT WITH H2ENGINEERING, INC., IS PROHIBITED.



**H SOLENOID VALVE DETAIL**



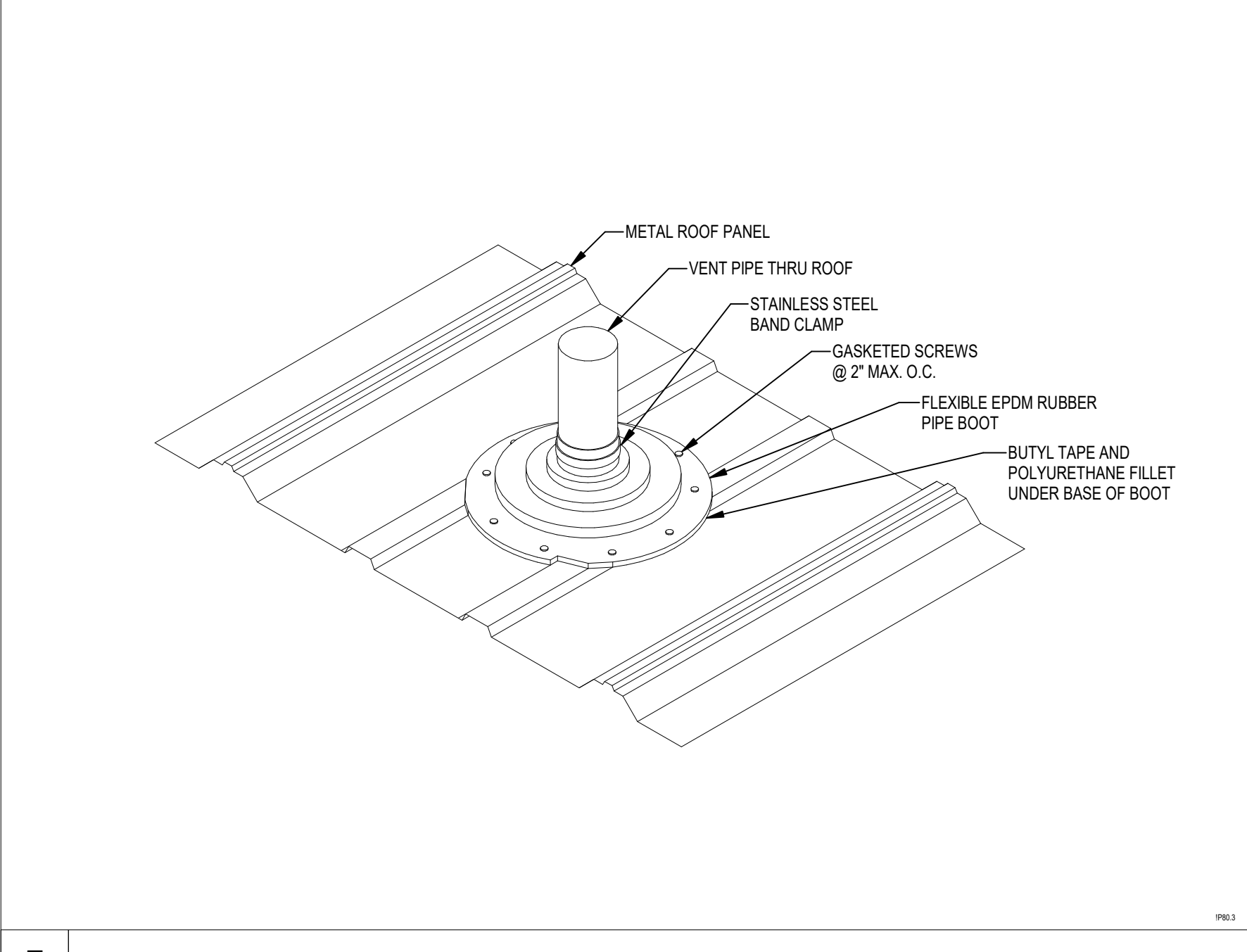
**D FLOOR DRAIN**



**A WATER SERVICE ENTRANCE**



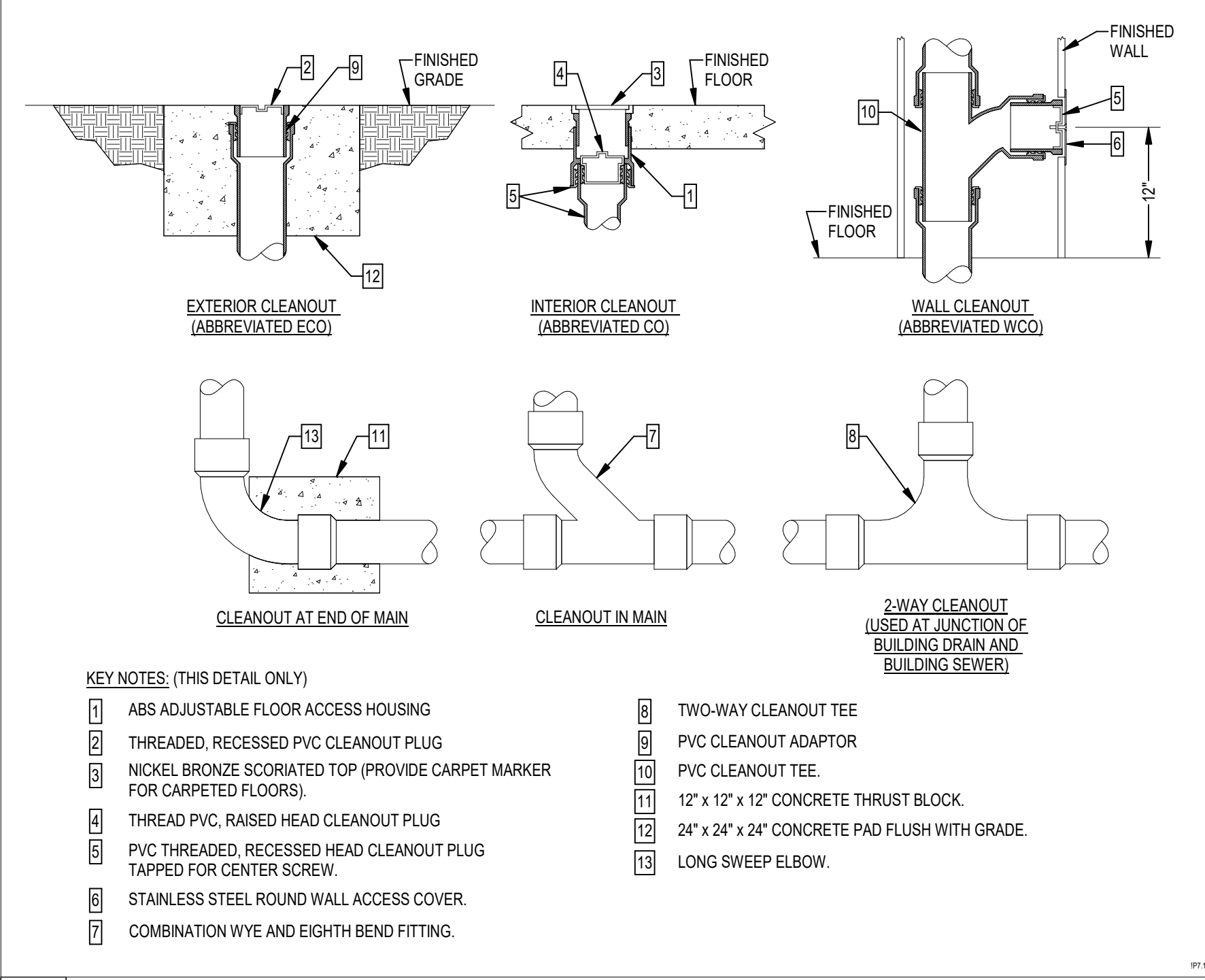
**E VENT THRU METAL ROOF**



**B DOMESTIC HOT WATER SYSTEM**



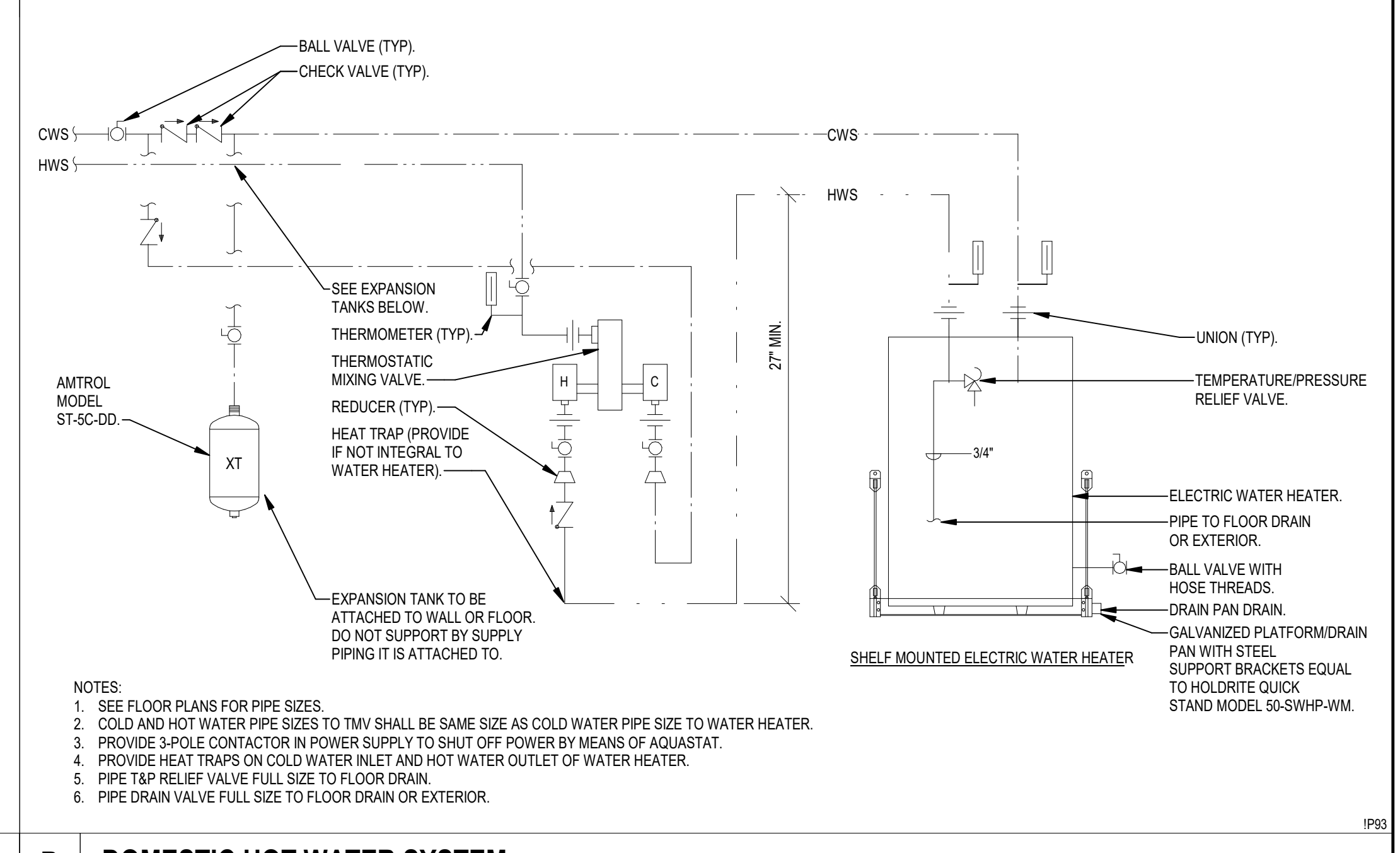
**F CLEANOUTS**



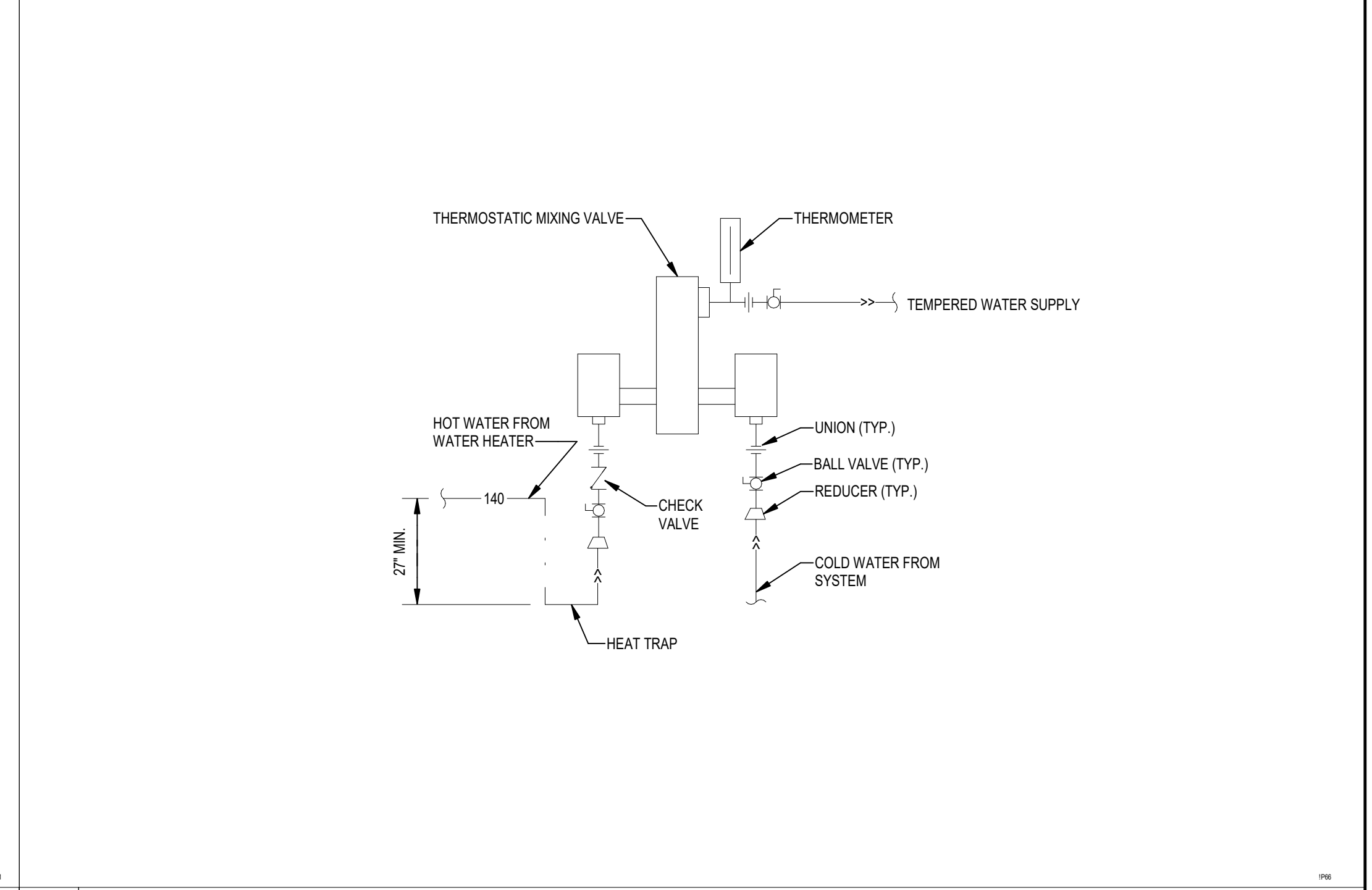
**C THERMOSTATIC MIXING VALVE**



**G TYPICAL PIPE HANGERS**



**A WATER SERVICE ENTRANCE**



**C THERMOSTATIC MIXING VALVE**

**H2 ENGINEERING**

114 EAST 9th AVENUE  
TALLAHASSEE, FL 32303  
PHONE 850.224.7922  
www.H2Engineering.com

H2E PROJECT No. 21123

THIS DOCUMENT IS THE PROPERTY OF H2Engineering AND IS PREPARED AS AN INSTRUMENT OF SERVICE. ITS USE, REUSE OR REPRODUCTION, EXCEPT BY WRITTEN AGREEMENT WITH H2ENGINEERING, INC., IS PROHIBITED.

**PROJECT INFORMATION**

**MARKET DISTRICT PARK**  
Tallahassee, Florida

**CLIENT:**  
Blueprint Intergovernmental Agency  
315 S. Calhoun Street, Suite 450, Tallahassee, FL 32301

Landscape Architecture = L  
**HARGREAVES JONES**  
180 Varick Street, Suite 204, New York, NY 10014  
www.hargreaves.com

Architecture = A  
Signage & Wayfinding = W  
Irrigation Design = LI  
Local Landscape Architect  
**Architects Lewis + Whitlock**  
206 W. Virginia Street, Tallahassee, FL 32301  
www.think3d.net

Civil Engineering = C  
Johnson + Milner  
1725 Capital Cir NE #301, Tallahassee, FL 32308  
www.johnsonmilner.com

Mechanical Engineering (Architecture) = MA  
Electrical Engineering (Site) = ES  
Electrical Engineering (Architecture) = EA  
Plumbing Engineering (Architecture) = PA  
**H2 Engineering**  
114 E. 5th Ave, Tallahassee, FL 32303  
www.h2engineering.com

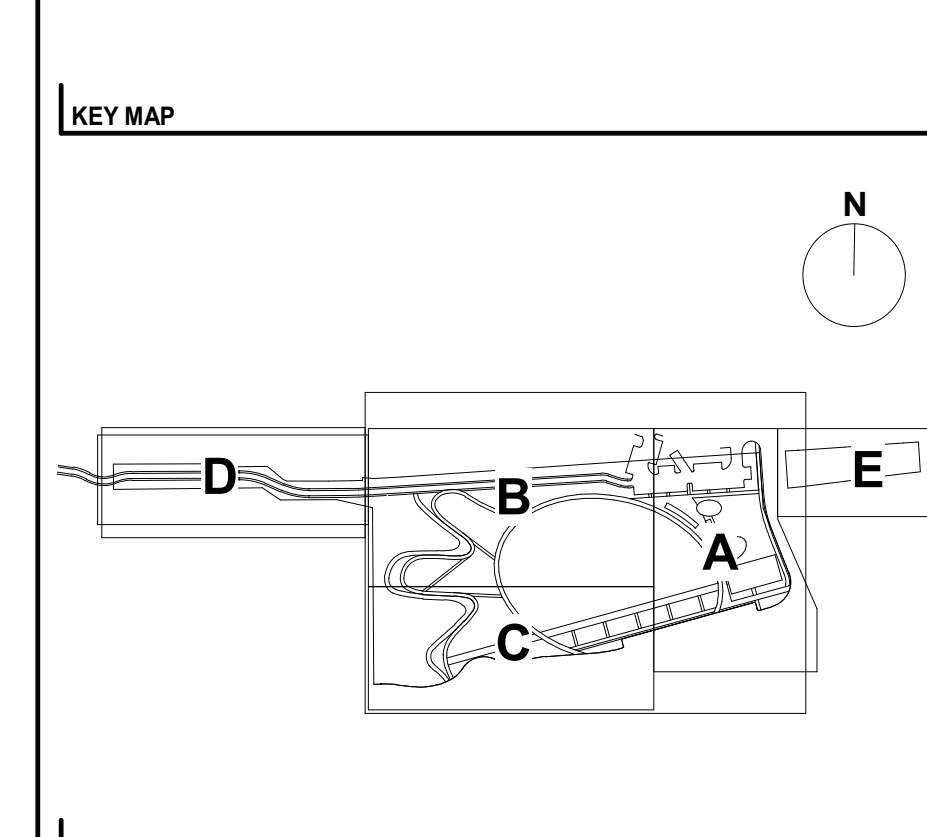
Survey = V  
**AD Platt**  
3436 Forward Pass Trail, Tallahassee, FL 32309  
www.adplatt.com

**SEAL/SIGNATURE**

Florida Registry #2485  
Scott R. Drury, P.E. #88845

**ISSUE/REVISIONS**

NO.	DESCRIPTION	DATE
1	ISSUED FOR SCHEMATIC DESIGN (50%)	2022/10/28
2	ISSUED FOR DESIGN DEVELOPMENT (60%)	2023/01/27
3	ISSUED FOR ENVIRONMENTAL MANAGEMENT PLAN	2023/03/30
4	ISSUED FOR 90% CD CHECKSET	2023/07/07
5	ISSUED FOR 100% CD	2023/09/25
6	ISSUED FOR EMP RESUBMISSION 1	2023/09/25
7	ISSUED FOR EMP RESUBMISSION 2	2023/12/04
8	FINAL BID SET	2024/06/14



**SHEET INFORMATION**

Project No.: TMD 2101  
Package: FINAL BID SET  
Drawn By: JLR  
Checked By: SRD  
Date: 2024/06/14

**SHEET TITLE**

**DETAILS**

**SHEET NO.**

**PA-300**