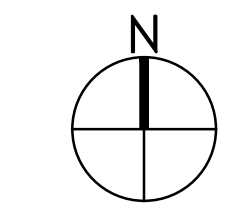
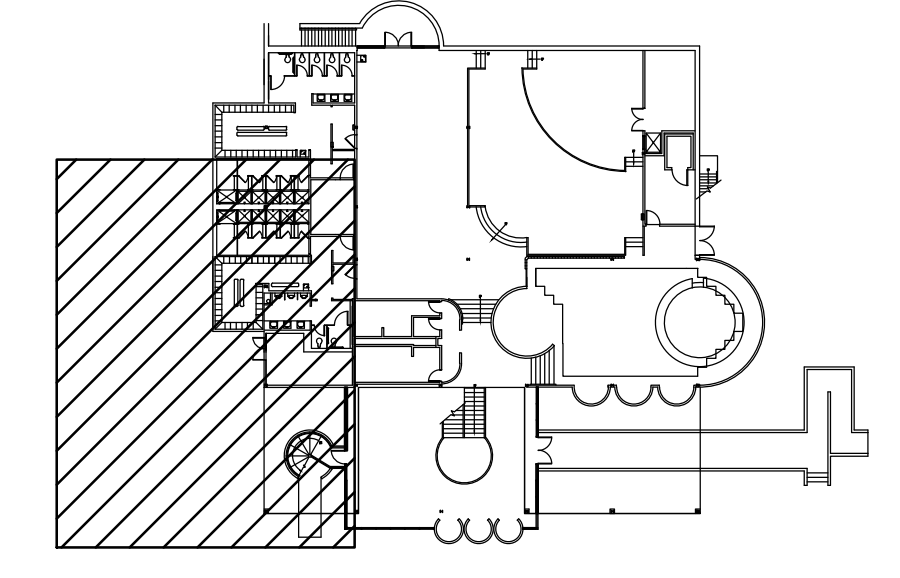
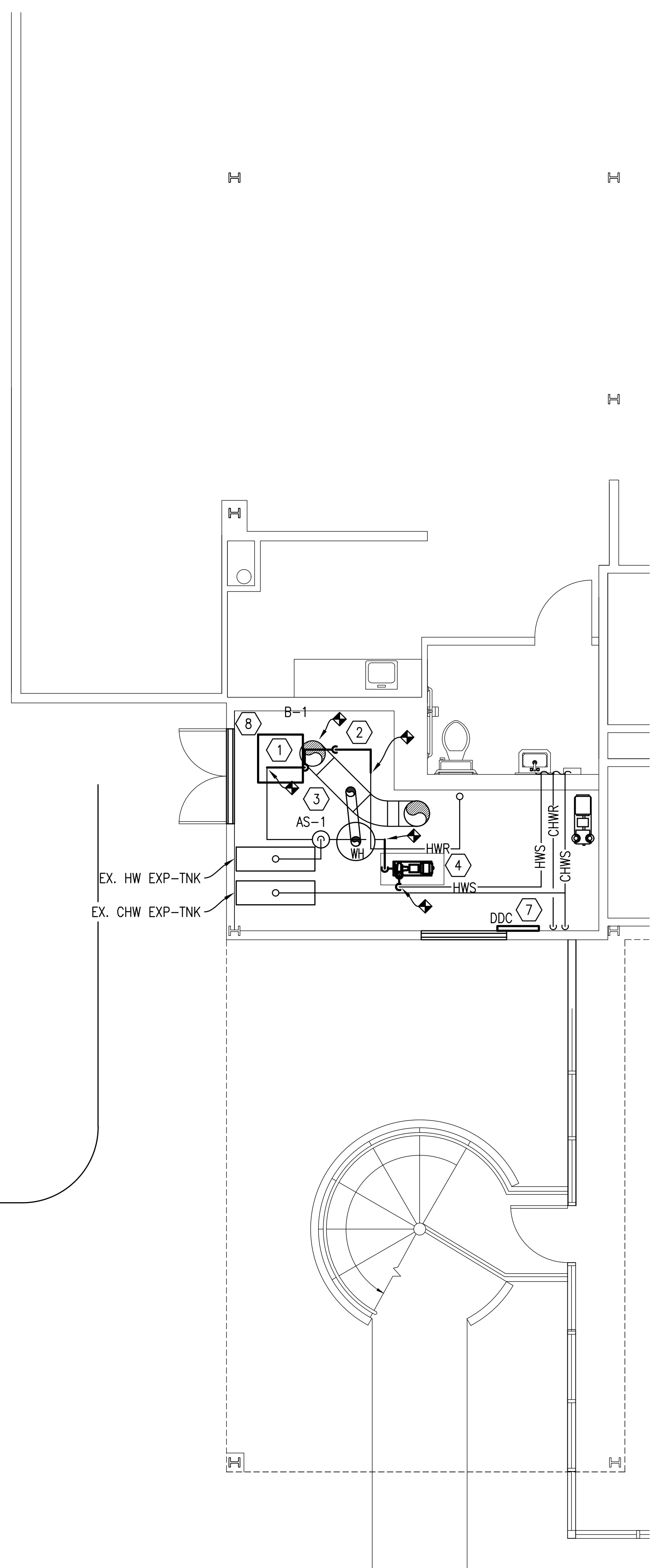
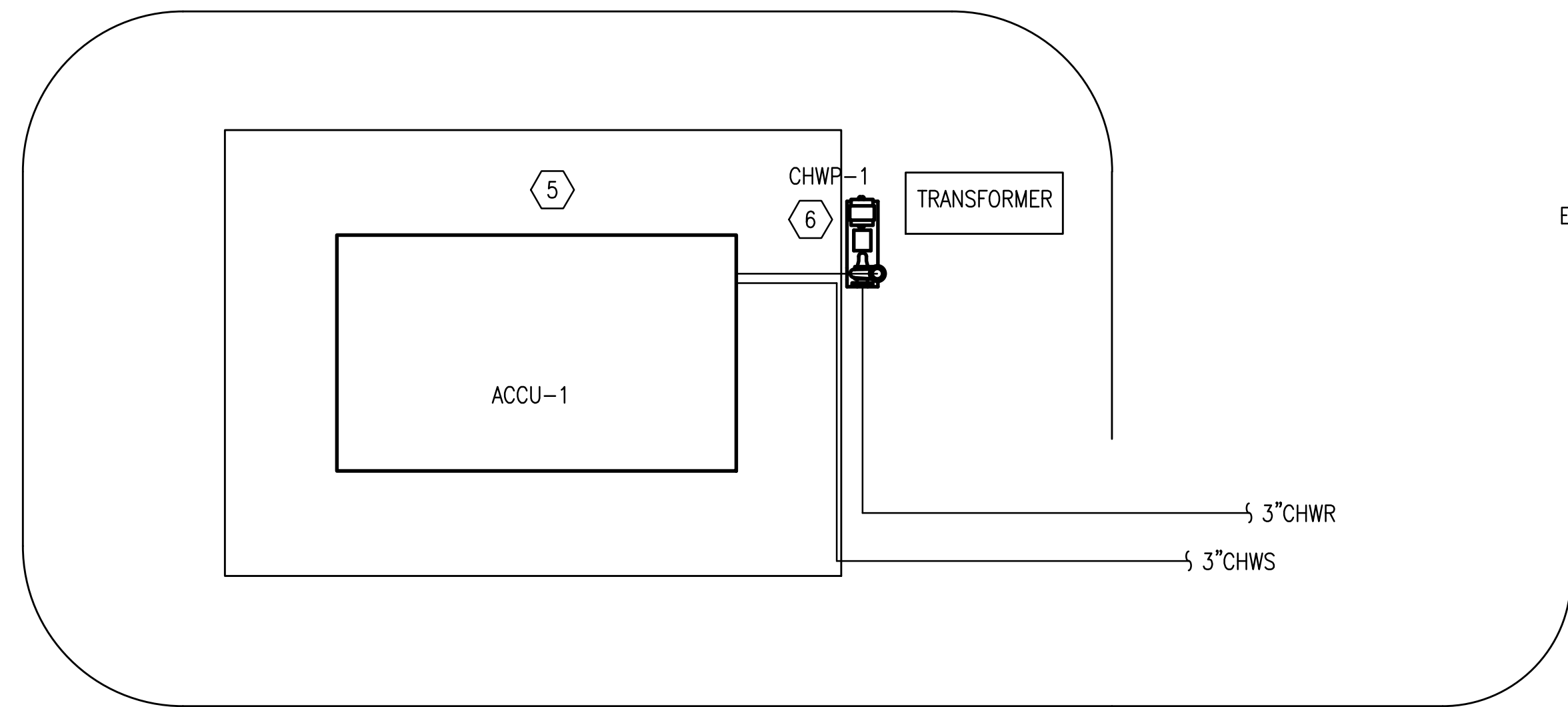
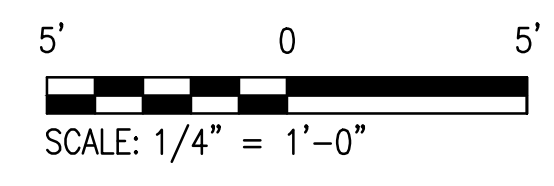


SHEET NOTES

- 1 FURNISH AND INSTALL NEW BOILER.
- 2 FURNISH AND INSTALL NEW HOT WATER PIPING AS REQUIRED TO CONNECT NEW BOILER TO SYSTEM. NEW PIPING SHALL MATCH THE SIZE AND MATERIAL OF THE EXISTING PIPING.
- 3 CONNECT BOILER VENT TO EXISTING VENT STACK UPSTREAM OF WATER HEATER VENT CONNECTION.
- 4 FURNISH AND INSTALL NEW HOT WATER PUMP.
- 5 FURNISH AND INSTALL NEW AIR COOLED CHILLER. MOUNT ON FACTORY FURNISHED VIBRATION ISOLATORS.
- 6 FURNISH AND INSTALL NEW CHILLED WATER PUMP.
- 7 FURNISH AND INSTALL NEW DDC ENCLOSURE.
- 8 FURNISH AND INSTALL BOILER CIRCULATOR PUMP, PIPING, AND ACCESSORIES. SEE DETAIL.

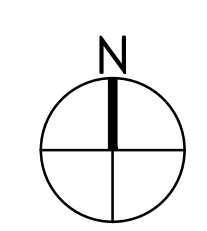


KEY PLAN  
NOT TO SCALE



35% SUBMITTAL – NOT FOR CONSTRUCTION

REVISION	DATE	DESCRIPTION	BY	APPR'D
<b>BASE CIVIL ENGINEER EGLIN AIR FORCE BASE, FLORIDA</b>				
SABER PROJECT MANAGER		TITLE		
DATE	<b>REPLACE AHU'S, CHILLER, BOILER IN BUILDING 843</b>			
SIGNATURE				
APPROVED				
CENM				
PROJ. ENGR. S. JOHNSON				
SABER AS-BUILT DRAWING BASED ON 35% DESIGN		CONTENTS		
		MECHANICAL NEW WORK PLAN		
APPROVED		DATE		
96 CEG/CEN		JUNE 2024		
APPROVED		SCALE		
		AS SHOWN		
SPEC. NO.		PROJ. NO.	DRAWING NO.	FILE NO.
		FTFA 23MM04		



MECHANICAL NEW WORK PLAN  
SCALE: 1/4" = 1'-0"

**PETERSON ENGINEERING INC.**

(PROF. ENG. # 3600)  
75 SOUTH "F" STREET  
PENSACOLA, FLORIDA 32502  
(850) 434-0513  
PEI 24032

INDEX NO.  
**M-101**

D:\PROJECT\2024\24032 Replace AHU's, Chiller, Boiler in Bldg. 843\DWG\Mech\24032 M101.dwg, 6/18/2024 12:49:32 PM, seth, ARCH full bleed D (36.00 x 24.00 Inches)