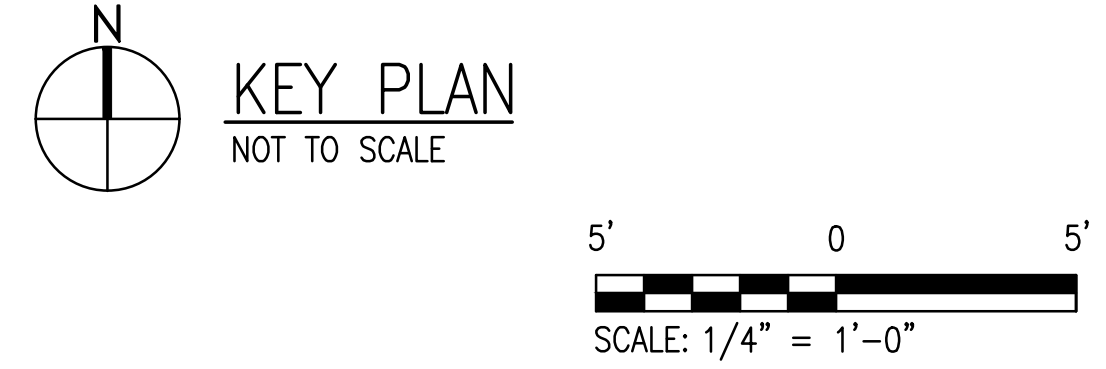
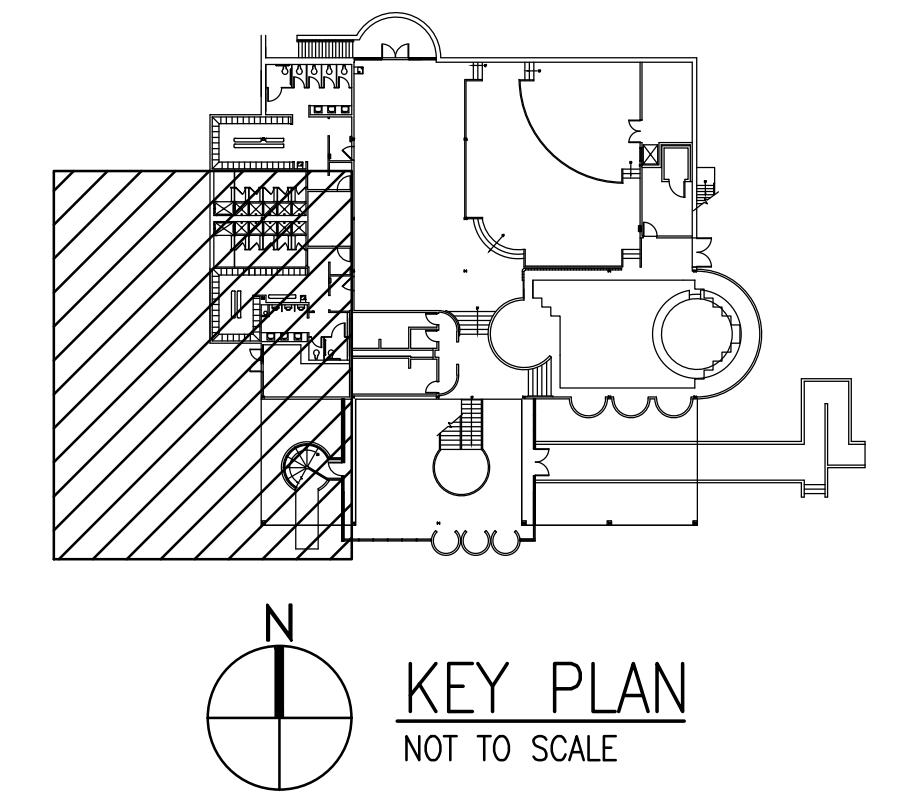
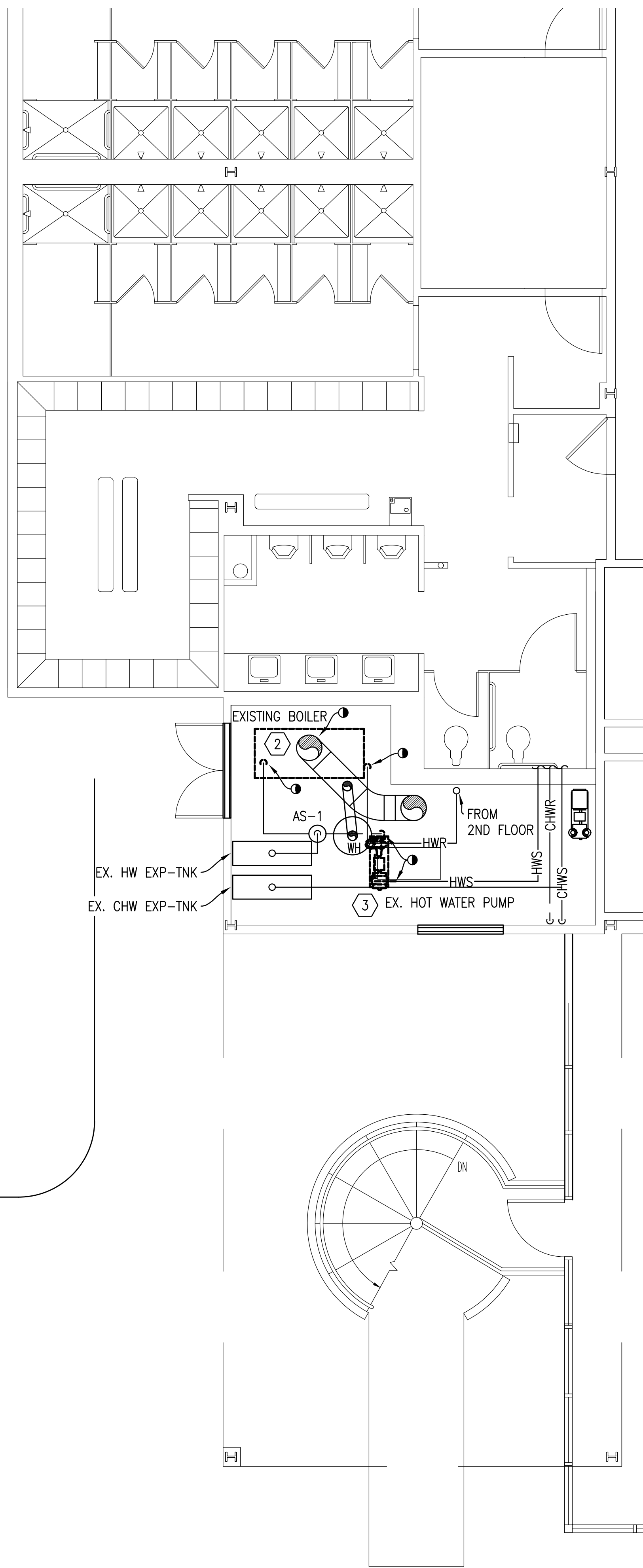
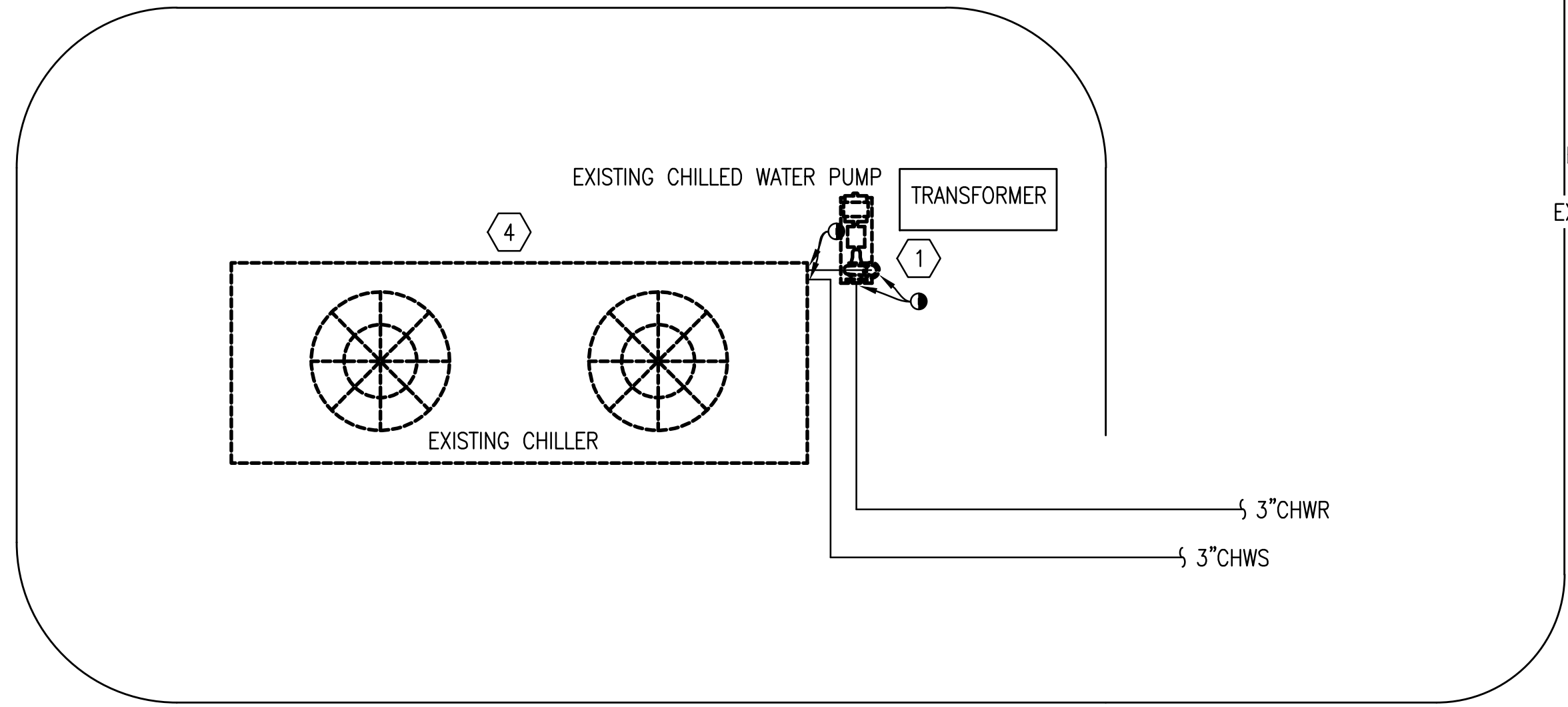


D:\PROJECT\2024\24032 Replace AHU's, Chiller, Boiler in Bldg. 843\DWG\Mech\24032 MD101.dwg.
 6/18/2024 12:49:30 PM, seth, ARCH full bleed D (36.00 x 24.00 Inches)

SHEET NOTES

- ① DEMOLISH CHILLED WATER PUMP. DEMOLISH PIPING AT SUCTION AND DISCHARGE OF THE PUMP TO PROVIDE VALVES AS SHOWN IN INSTALLATION DETAIL.
- ② DEMOLISH BOILER. DEMOLISH HOT WATER PIPING AND VENT AS REQUIRED TO MAKE CONNECTION TO NEW BOILER.
- ③ DEMOLISH HOT WATER PUMP. DEMOLISH PIPING AT SUCTION AND DISCHARGE OF THE PUMP TO PROVIDE VALVES AS SHOWN IN INSTALLATION DETAIL.
- ④ DEMOLISH AIR COOLED CHILLER



MECHANICAL DEMOLITION PLAN
 SCALE: 1/4" = 1'-0"

PETERSON ENGINEERING INC.
 (PROF. ENG. # 3600)
 75 SOUTH "F" STREET
 PENSACOLA, FLORIDA 32502
 (850) 434-0513
 PEI 24032

35% SUBMITTAL - NOT FOR CONSTRUCTION

REVISION	DATE	DESCRIPTION	BY	APPR'D
BASE CIVIL ENGINEER EGLIN AIR FORCE BASE, FLORIDA				
SABER PROJECT MANAGER		TITLE		
DATE _____		REPLACE AHU'S, CHILLER, BOILER IN BUILDING 843		
SIGNATURE _____				
APPROVED _____				
CENM _____				
DRAWN BY S. MCGRAW PROJ. ENGR. S. JOHNSON				
SABER AS-BUILT DRAWING BASED ON 35% DESIGN		CONTENTS		
		MECHANICAL DEMOLITION PLAN		
APPROVED _____		DATE JUNE 2024		
96 CEG/CEN		SCALE AS SHOWN		
APPROVED _____		BASE CIVIL ENGINEER		
INDEX NO. MD101	PROJ. NO. FTFA 23MM04	DRAWING NO.	FILE NO.	SHEET OF .