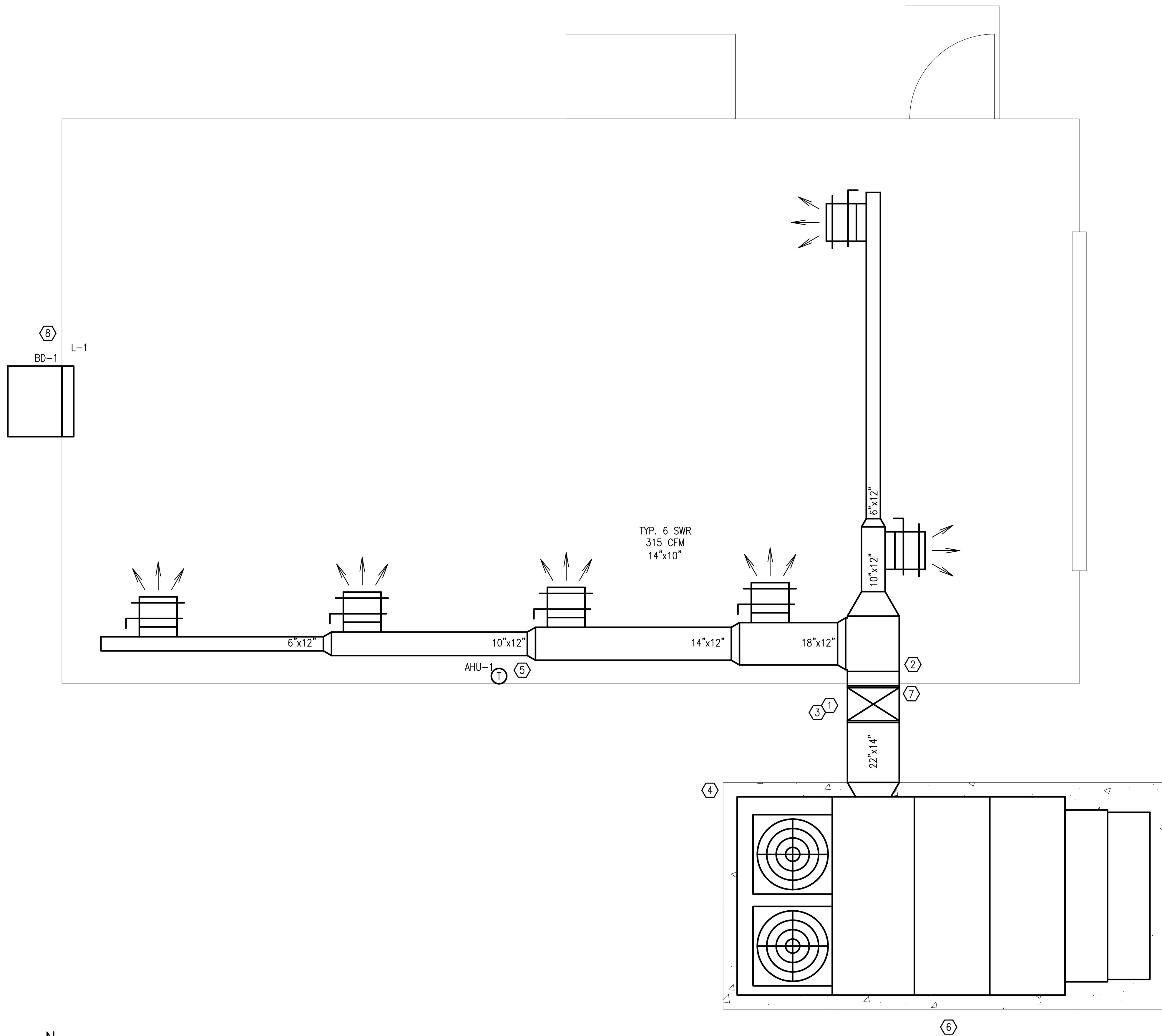


D:\PROJECT\2024\24058 Repair/Upgrade SAW Facility B8954 (Roof, HVAC, Electrical, Lighting, Power, Paint Facility)\DWG\Mech\24058M-101.dwg, 7/8/2024 5:26:33 PM, smcgraw, ARCH full bleed D (36.00 x 24.00 Inches)



NEW WORK NOTES

- ① ALL SUPPLY DUCTWORK SHALL BE CONSTRUCTED TO 1" STATIC PRESSURE, SEAL CLASS A, SUPPORTED IN ACCORDANCE WITH SMACNA DUCTWORK CONSTRUCTION STANDARDS.
- ② ALL INTERIOR SUPPLY DUCTWORK SHALL BE INSULATED WITH R-8 OR GREATER.
- ③ ALL EXTERIOR SUPPLY DUCTWORK SHALL BE DOUBLE WALL INSULATED, R-8 OR GREATER.
- ④ PROVIDE CONCRETE PAD LARGER THAN UNIT FOOTPRINT BY 6" ON ALL SIDES. FASTEN TO PAD WITH HURRICANE CLIPS. SEE DETAIL.
- ⑤ PROVIDE EXPLOSION PROOF THERMOSTAT.
- ⑥ PIPE CONDENSATE WITH TRAP. SEE DETAIL. PROVIDE SPLASH BLOCK FOR CONDENSATE. ALL CONDENSATE PIPING SHALL BE COPPER.
- ⑦ SEAL DUCT PENETRATION INTO BUILDING WITH WATERPROOF SEALANT.
- ⑧ SEAL LOUVER PENETRATION WITH WATERPROOF SEALANT.

GENERAL NOTES

1. INSTALL A COMPLETE AND OPERABLE MECHANICAL SYSTEM AS INDICATED ON THE DRAWINGS, AS SPECIFIED AND AS REQUIRED BY CODE.
2. HVAC DRAWINGS ARE DIAGRAMMATIC AND INDICATIVE OF WORK TO BE FURNISHED AND INSTALLED UNDER THIS CONTRACT.
3. INSTALL ALL MECHANICAL EQUIPMENT IN ACCORDANCE WITH MANUFACTURERS' RECOMMENDATIONS, CONTRACT DOCUMENTS, AND APPLICABLE CODES AND REGULATIONS.
4. THE CONTRACTOR SHALL DETERMINE THE EXACT LOCATION OF ALL EXISTING UTILITIES BEFORE COMMENCING WORK.
5. THE CONTRACTOR SHALL FIELD VERIFY ALL DIMENSIONS BEFORE ANY DUCTWORK OR PIPING IS FABRICATED.
6. THE CONTRACTOR SHALL MAKE OFFSETS AND MINOR ADJUSTMENTS AS REQUIRED FOR SYSTEM INSTALLATIONS.
7. ALL EQUIPMENT, PIPING, DUCTWORK, ETC., SHALL BE SUPPORTED AS DETAILED, SPECIFIED, AND REQUIRED TO PROVIDE A VIBRATION-FREE INSTALLATION.
8. COORDINATION WITH ALL TRADES IS REQUIRED FOR ALL WORK UNDER THIS CONTRACT.
9. THE CONTRACTOR SHALL VISIT THE JOB SITE TO STUDY DETAILS OF THE WORK, WORKING CONDITIONS, AND VERIFY CONDITIONS IN THE FIELD.
10. VERIFY COLLAR SIZES ON ALL EQUIPMENT INLETS AND OUTLETS AND TRANSITION DUCTWORK AND PIPING AS NECESSARY.
11. INSTALL ALL EQUIPMENT AND DUCTWORK SUCH THAT MANUFACTURERS RECOMMENDED CLEARANCES ARE MET FOR ALL ACCESS PANELS, MOTORS, FANS, BELTS, FILTERS, AND INTAKES.
12. ALL DUCTWORK SHALL BE GALVANIZED METAL CONSTRUCTION.
13. DUCTWORK DIMENSIONS ARE INSIDE CLEAR DIMENSIONS.
14. PIPE ROUTING SHALL NOT INTERFERE WITH FILTER REMOVAL OR ACCESS DOORS.
15. SEAL ALL PENETRATIONS OF WALLS AIRTIGHT, REGARDLESS OF WHETHER WALLS ARE FIRE RATED OR NOT.
16. THE CONTRACTOR SHALL BE RESPONSIBLE FOR COORDINATING WORK OF ALL SUBCONTRACTORS TO AVOID INTERFERENCES.
17. SUPPORTS AND HANGERS FOR DUCTWORK AND PIPING SHALL PRESENT A NEAT AND ORDERLY APPEARANCE.
18. DETAILS ARE FOR TYPICAL INSTALLATION. THE MANUFACTURER'S INSTALLATION GUIDELINES SUPERCEDE DETAILS IF THERE IS A CONFLICT.
19. EQUIPMENT MODELS OTHER THAN THE BASIS OF DESIGN ARE ACCEPTABLE SO LONG AS THEY MEET OR EXCEED SCHEDULED PERFORMANCE VALUES. ELECTRICAL DATA IN SCHEDULES ARE THE MAXIMUM ACCEPTABLE VALUES.

MECHANICAL NEW WORK FLOOR PLAN
 SCALE: 1/2" = 1'-0"

 SCALE: 1/2" = 1'- 0"

35% SUBMITTAL – NOT FOR CONSTRUCTION

REVISION	DATE	DESCRIPTION	BY	APPR'D
BASE CIVIL ENGINEER EGLIN AIR FORCE BASE, FLORIDA				
DATE		TITLE		
SIGNATURE		REPAIR/UPGRADE SAW FACILITY – B8954, TS-74A		
APPROVED				
CENM				
DRAWN BY: S. MCCRAW PROJ. ENGR.: S. JOHNSON				
SABER PROJECT MANAGER		CONTENTS		
DRAWING BASED ON 35% DESIGN		MECHANICAL FLOOR PLAN – NEW WORK		
APPROVED		APPROVED		DATE
96 CEG/CEN		APPROVED		JULY 2024
APPROVED		APPROVED		SCALE
BASE CIVIL ENGINEER		APPROVED		AS SHOWN
SPEC. NO.	PROJ. NO.	DRAWING NO.	FILE NO.	SHEET OF .
	FTFA 23-JG19			

PETERSON ENGINEERING INC.
 (PROF. ENG. #: 3600)
 75 SOUTH "F" STREET
 PENSACOLA, FLORIDA 32502
 (850) 434-0513
 PEI 24058

INDEX NO.
M-101