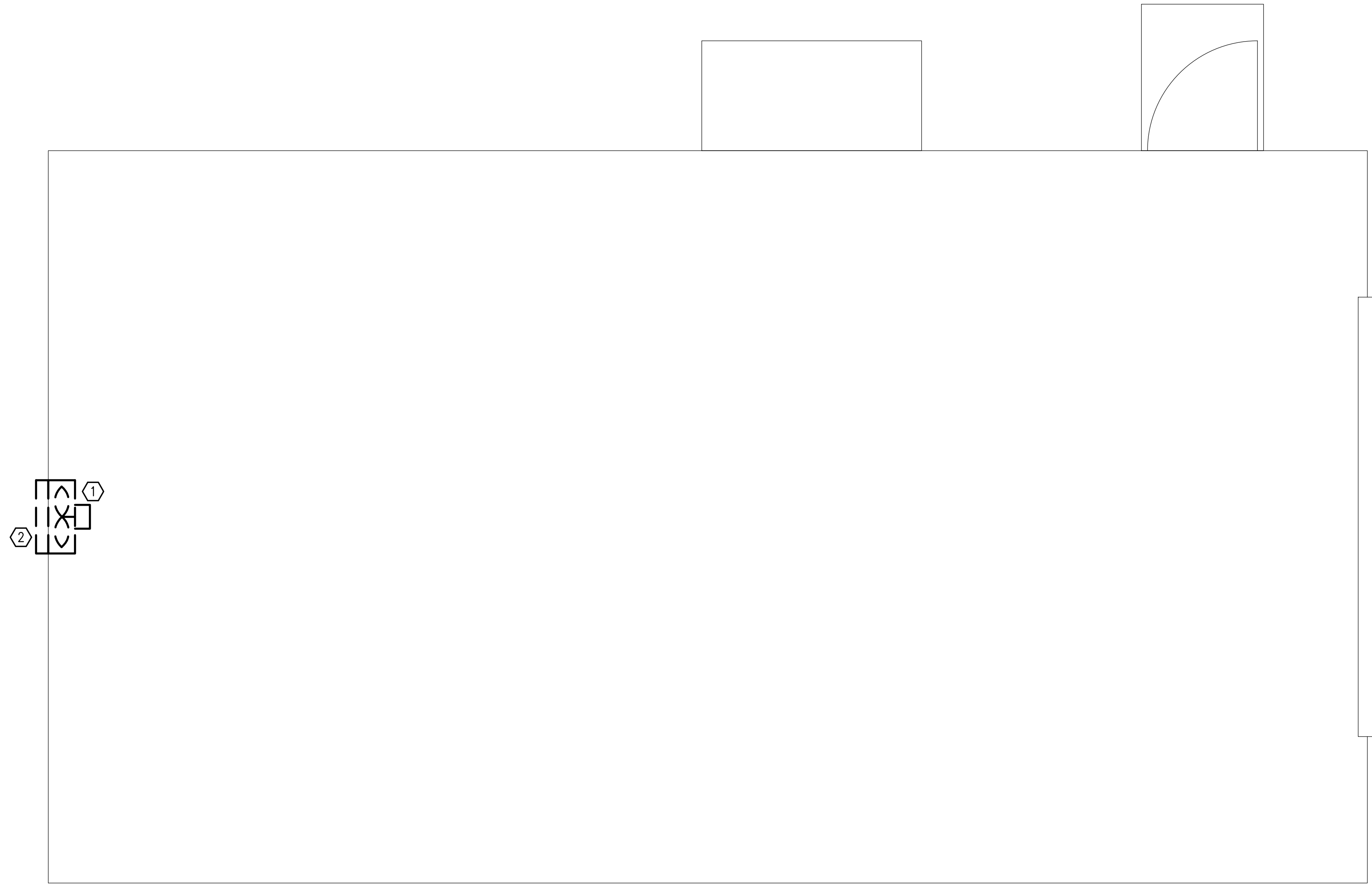
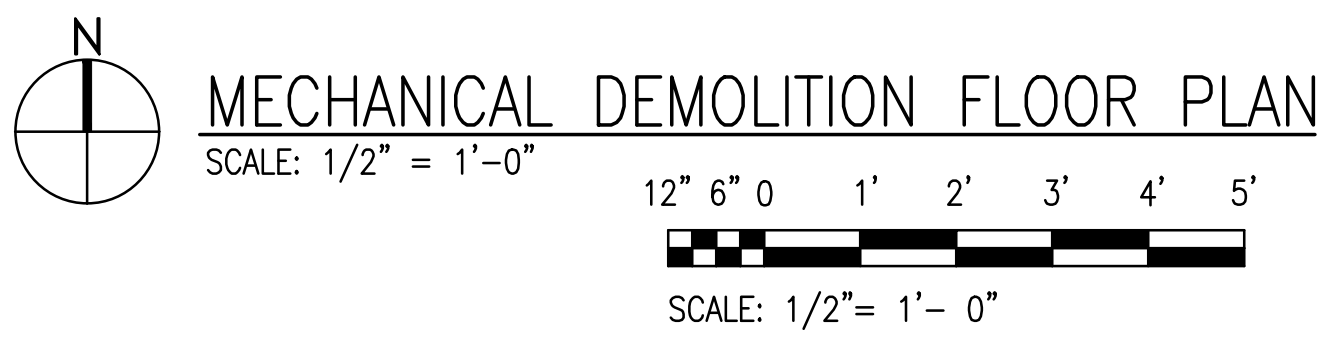


D:\PROJECT\2024\24058 Repair/Upgrade SAW Facility B8954 (Roof, HVAC, Electrical, Lighting, Power, Paint Facility)\DWG\Mech\24058MD101.dwg, 7/8/2024 5:21:48 PM, smcgraw, ARCH full bleed D (36.00 x 24.00 Inches)



DEMOLITION NOTES

- ① DEMOLISH WALL MOUNTED EXHAUST FAN, DISCONNECT, STARTER, AND WIRING. OPENING TO BE REUSED TO MOUNT LOUVER AS PART OF NEW WORK.
- ② DEMOLISH EXISTING BACKDRAFT DAMPER.



MECHANICAL DEMOLITION FLOOR PLAN

SCALE: 1/2" = 1'-0"

12' 6" 0 1' 2' 3' 4' 5'

SCALE: 1/2" = 1'- 0"

PETERSON ENGINEERING INC.

(PROF. ENG. #: 3600)
75 SOUTH "F" STREET
PENSACOLA, FLORIDA 32502
(850) 434-0513
PEI 24058

INDEX NO.
MD101

35% SUBMITTAL – NOT FOR CONSTRUCTION

REVISION	DATE	DESCRIPTION	BY	APPR'D
<p>BASE CIVIL ENGINEER EGLIN AIR FORCE BASE, FLORIDA</p>				
<p>SABER PROJECT MANAGER</p>		<p>TITLE</p> <p>REPAIR/UPGRADE SAW FACILITY – B8954, TS-74A</p>		
<p>DATE _____</p> <p>SIGNATURE _____</p> <p>APPROVED _____</p> <p>CENM _____</p> <p>DRAWN BY S. MCCRAW</p> <p>PROJ. ENGR. S. JOHNSON</p>		<p>CONTENTS</p> <p>MECHANICAL FLOOR PLAN – DEMOLITION</p>		
<p>SABER AS-BUILT DRAWING BASED ON 35% DESIGN</p>		<p>APPROVED _____</p> <p>96 CEG/CEN</p>		<p>DATE</p> <p>JULY 2024</p>
<p>APPROVED _____</p> <p>BASE CIVIL ENGINEER</p>		<p>APPROVED _____</p>		<p>SCALE</p> <p>AS SHOWN</p>
<p>SPEC. NO.</p>	<p>PROJ. NO.</p> <p>FTFA 23-JG19</p>	<p>DRAWING NO.</p>	<p>FILE NO.</p>	<p>SHEET</p> <p>OF .</p>