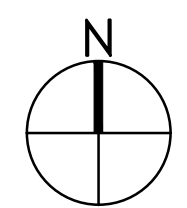
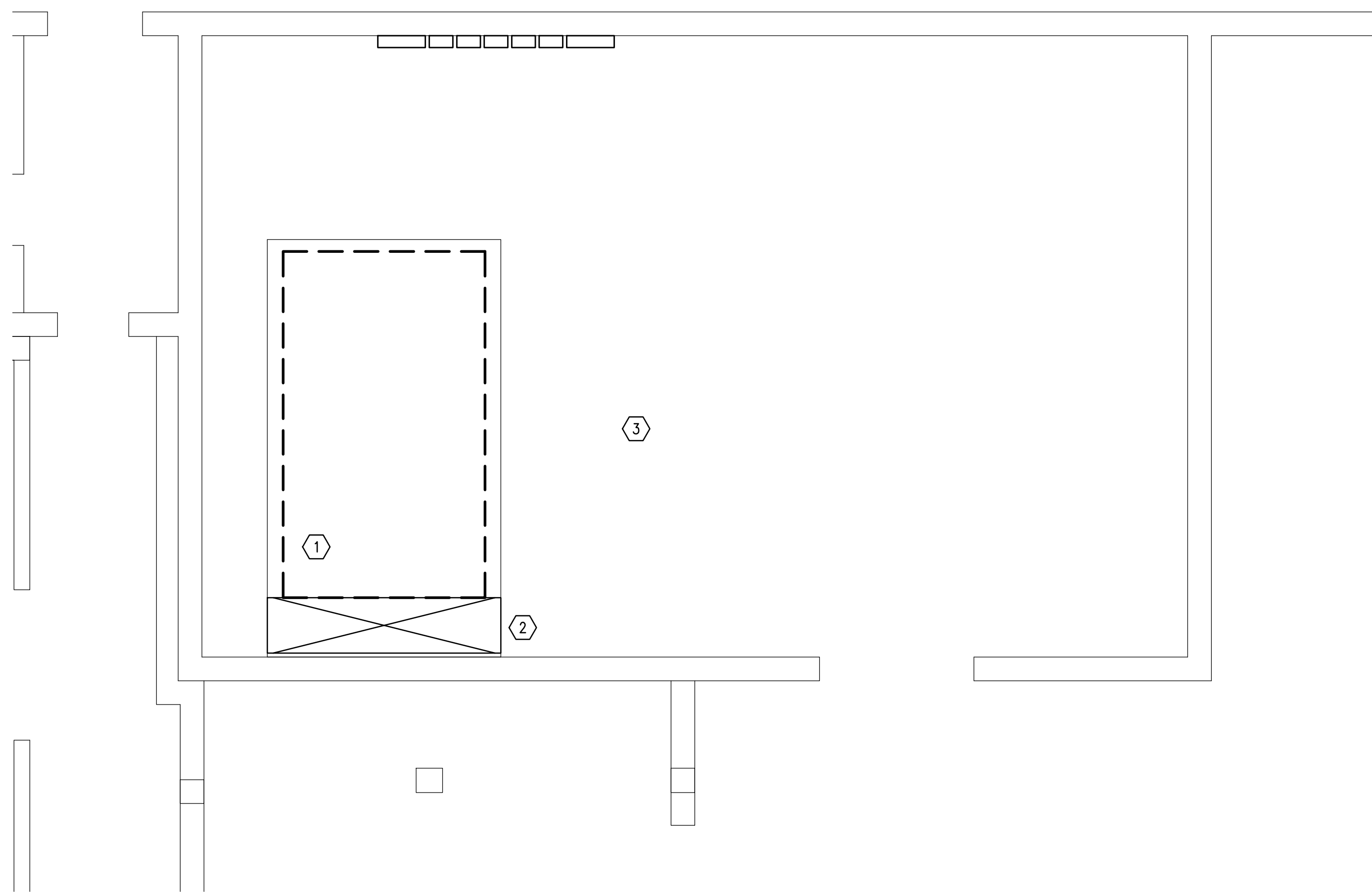


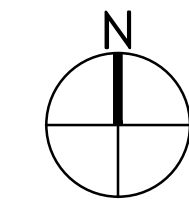
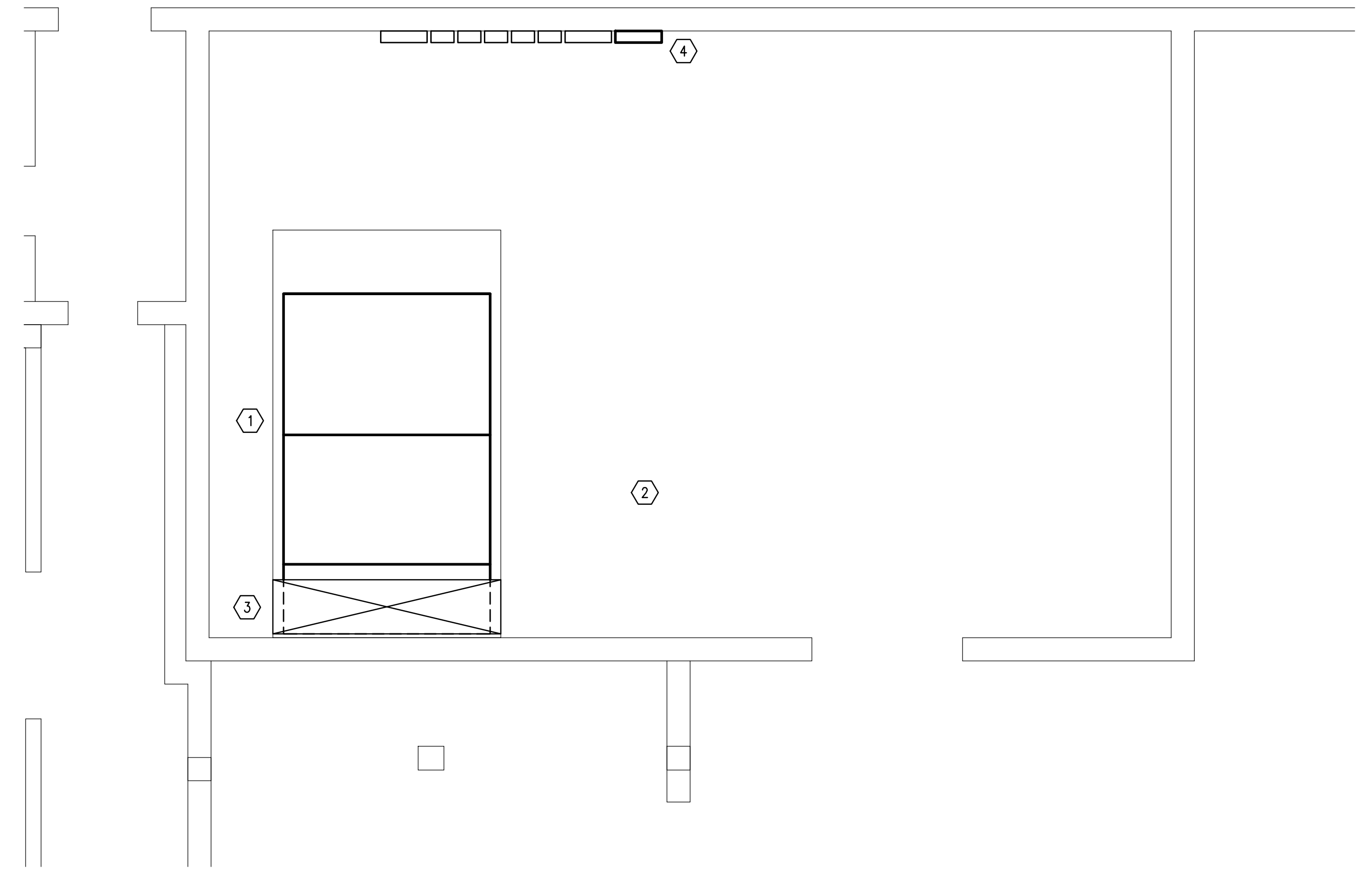
D:\PROJECT\2024\24083 Repair HVAC AHU AFRL Ammo Exp & TOX Lab B1206\DWG\Mech\24083M-101.dwg, 7/3/2024 5:32:35 PM, smcgraw, ARCH full bleed D (36.00 x 24.00 Inches)



MECHANICAL NEW WORK FLOOR PLAN
SCALE: 1/4" = 1'-0"

DEMOLITION NOTES

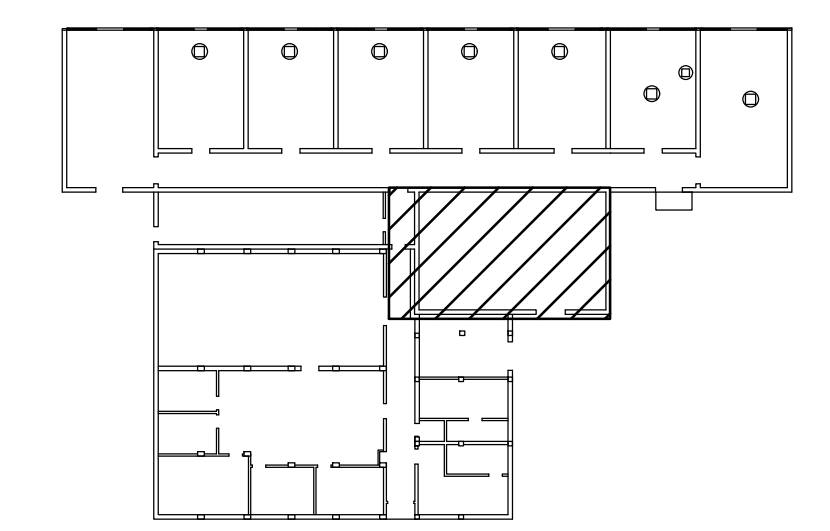
- ① DEMOLISH EXISTING AIR HANDLING UNIT. PRESERVE ALL EXISTING SUPPLY DUCTWORK.
- ② DEMOLISH SECTION OF OUTSIDE AIR DUCTWORK TO ALLOW CONNECTION TO TOP OF NEW UNIT.
- ③ DEMOLISH ALL PNEUMATIC STEAM AND CHILLED WATER CONTROL VALVES.



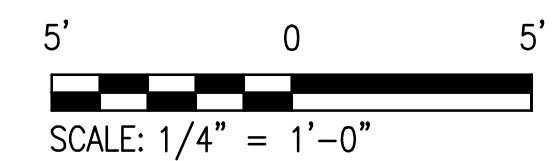
MECHANICAL NEW WORK FLOOR PLAN
SCALE: 1/4" = 1'-0"

NEW WORK NOTES

- ① FURNISH AND INSTALL AIR HANDLING UNIT. MODIFY EXISTING SUPPLY DUCTWORK AS REQUIRED FOR CONNECTION TO AHU ZONE DAMPERS.
- ② FURNISH AND INSTALL NEW STEAM AND CHILLED WATER CONTROL VALVES.
- ③ CONNECT NEW AIR HANDLING UNIT TO EXISTING OUTSIDE AIR DUCTWORK.
- ④ INSTALL NEW DDC ENCLOSURE. PROVIDE DDC CONTROLS FOR NEW AIR HANDLER, DAMPERS, AND VALVES.



KEY PLAN



SCALE: 1/4" = 1'-0"

PETERSON ENGINEERING INC.
(PROF. ENG. # 3600)
75 SOUTH "F" STREET
PENSACOLA, FLORIDA 32502
(850) 434-0513
PEI 24083

INDEX NO.
M-101

35% SUBMITTAL - NOT FOR CONSTRUCTION

REVISION	DATE	DESCRIPTION	BY	APPR'D

BASE CIVIL ENGINEER
EGLIN AIR FORCE BASE, FLORIDA

SABER
PROJECT MANAGER
DATE _____
SIGNATURE _____
APPROVED _____
CENM _____
DRAWN BY S. MCGRAW
PROJ. ENGR. S. JOHNSON

TITLE
REPAIR HVAC AND AHU AFRL EXP & TOX LAB B1206

SABER AS-BUILT
DRAWING BASED ON
35% DESIGN

CONTENTS
MECHANICAL FLOOR PLANS - DEMO AND NEW WORK

APPROVED 96 CEG/CEN	DATE JULY 2024
APPROVED BASE CIVIL ENGINEER	SCALE AS SHOWN
SPEC. NO.	PROJ. NO. FTFA 24-AD06
DRAWING NO.	FILE NO.
SHEET	OF .