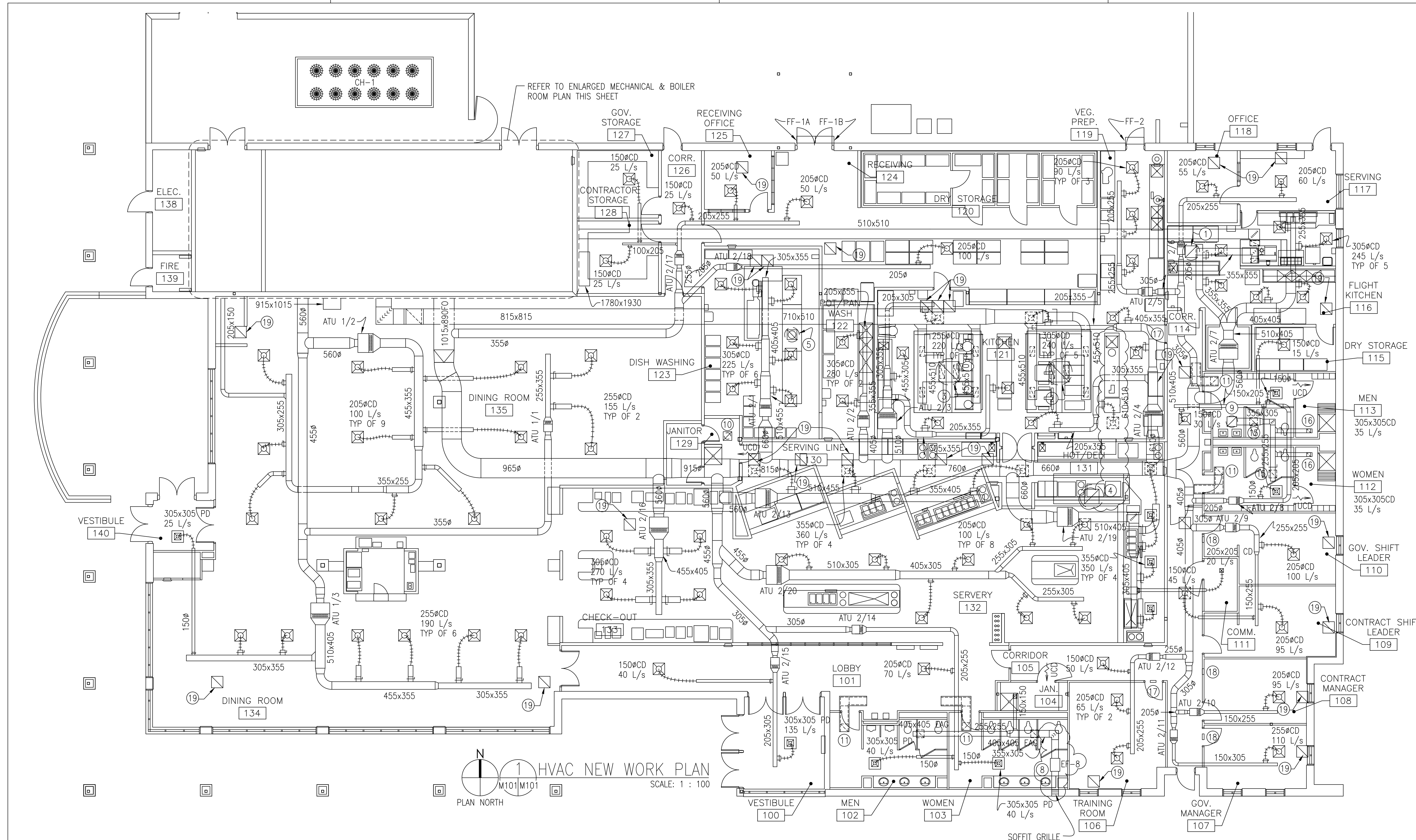


REVISIONS					
REVISION SYMBOL	NO. SYMS.	AMD. C.O.R.	DESCRIPTION	DATE	APPROVED

SHEET NOTES

- ① 610x610 EXHAUST DUCTWORK UP TO EF-1 ON ROOF.
- ② 1067x1067 EXHAUST DUCTWORK UP TO EF-2 ON ROOF.
- ③ 1067x1067 EXHAUST DUCTWORK UP TO EF-3 ON ROOF.
- ④ MOVE EF-4 TO EAST END OF HIP ROOF, ABOVE HOOD. REMOVE EXISTING DUCT AND REWORK EXHAUST DUCTWORK.
- ⑤ 510x510 EXHAUST DUCTWORK UP TO EF-5 ON ROOF.
- ⑥ 610x610 EXHAUST DUCTWORK UP TO EF-6 ON ROOF.
- ⑦ 510x510 EXHAUST DUCTWORK UP TO EF-7 ON ROOF.
- ⑧ 510x510 EXHAUST DUCTWORK TO INLINE EF-8 IN CEILING DISCHARGE DUCT INTO SOFFIT GRILLE.
- ⑨ 510x510 EXHAUST DUCTWORK UP TO EF-9 ON ROOF.
- ⑩ 205x205 EAG CONNECTED TO 455x455 EXHAUST DUCTWORK UP TO EF-10 ON ROOF.
- ⑪ 405x405 TG CONNECTED TO 455x255 TRANSFER DUCTWORK.
- ⑫ 5 KW ELECTRIC UNIT HEATER, 277/1/60 HZ, INTEGRAL ADJUSTABLE T'STAT AND SURFACE MOUNT WALL SLEEVE.
- ⑬ 355x355 GREENHECK FABRA GRAVITY INTAKE HOOD OR EQUAL.
- ⑭ 610x510 GREENHECK FABRA GRAVITY INTAKE HOOD OR EQUAL.
- ⑮ 405x405 EAG AT 205 L/s.
- ⑯ 205x205 EAG AT 35 L/s CONNECTED TO 205x205 EXHAUST DUCTWORK.
- ⑰ 915x865 AIR TRANSFER OPENING IN WALL ABOVE CEILING.
- ⑱ 305x205 AIR TRANSFER OPENING IN WALL ABOVE CEILING.
- ⑲ 600x600 PERFORATED TRANSFER GRILLE. PRICE MODEL PD0RE OR EQUAL.

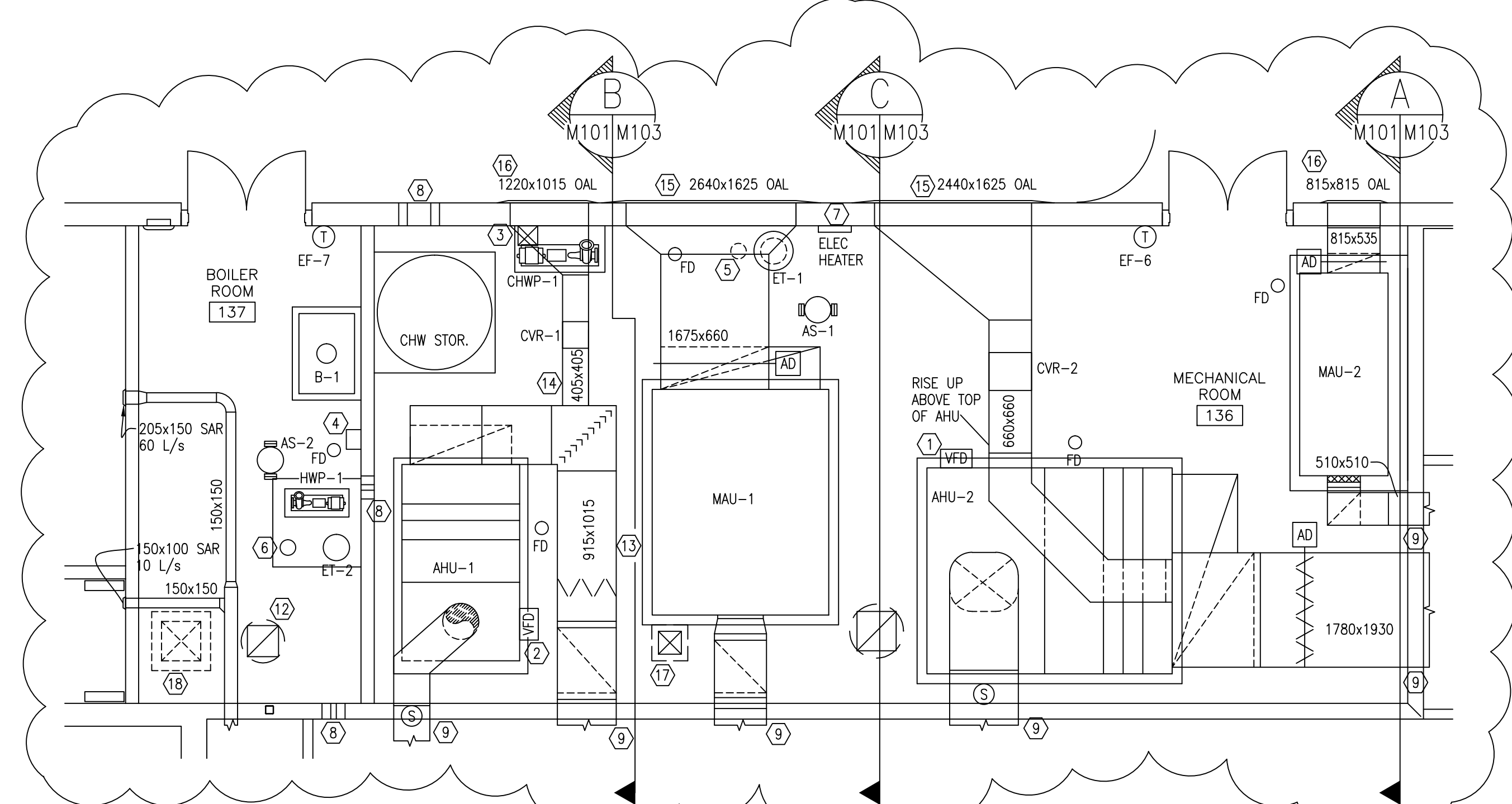
REVISION: FEBRUARY 19, 2002



1 HVAC NEW WORK PLAN
SCALE: 1 : 100
PLAN NORTH

ENLARGED MECH ROOM NOTES

- ① VFD FOR AHU-2, UNIT MOUNTED.
- ② VFD FOR AHU-1, UNIT MOUNTED.
- ③ MOTOR STARTER FOR CHILLED WATER PUMP, CHWP-1.
- ④ MOTOR STARTER FOR HOT WATER PUMP, HWP-1.
- ⑤ CHEMICAL SHOT FEEDER, CHILLED WATER SYSTEM.
- ⑥ CHEMICAL SHOT FEEDER, HOT WATER SYSTEM.
- ⑦ 5KW ELECTRIC UNIT HEATER 277/1/60, INTEGRAL ADJUSTABLE THERMOSTAT AND SURFACE MOUNTED WALL SLEEVE.
- ⑧ PIPE SLEEVE, PACK WITH SAFING AND FIRE CAULK.
- ⑨ DUCT SLEEVE, PACK WITH SAFING AIRTIGHT AND FLASH WITH SHEET METAL ON BOTH SIDES.
- ⑩ HEAT TRACE ALL OUTSIDE CHILLED WATER PIPING AT 4 WATTS/FT. SELF LIMITING CABLE W/THERMOSTATS.
- ⑪ 610x610 EXHAUST DUCTWORK UP TO EF-6 ON ROOF.
- ⑫ 510x510 EXHAUST DUCTWORK UP TO EF-7 ON ROOF.
- ⑬ BOTTOM OF DUCT IS 2135 CM; TOP 3150 CM A.F.F.
- ⑭ BOTTOM OF DUCT IS 2440 CM; TOP 2745 CM A.F.F.
- ⑮ MECHANICAL LOUVER - BOTTOM AT 1220 CM A.F.F. (TOP OF SILL BLOCK)
- ⑯ MECHANICAL LOUVER - TOP AT 2745 CM A.F.F.
- ⑰ 360x360 GRAVITY INTAKE HOOD.
- ⑱ 610x610 GRAVITY INTAKE HOOD.



2 HVAC ENLARGED MECHANICAL & BOILER ROOM
SCALE: 1 : 50
PLAN NORTH

'AS-BUILT'
JANUARY, 2003

NOTE: ALL DIMENSIONS AND/OR DIMENSIONS SHOWN IN CALLOUTS/NOTES ARE IN MILLIMETERS UNLESS OTHERWISE NOTED.

DESIGNED BY: R. CANEKERATNE	BULLOCK TICE ASSOCIATES 909 E. CERVANTES ST., SUITE B PENSACOLA, FL. 32501	U.S. ARMY ENGINEER DISTRICT, MOBILE CORPS OF ENGINEERS MOBILE, ALABAMA
DRAWN BY: A. REMSKI	EGLIN AIR FORCE BASE, FLORIDA FY-00 EGLIN DINING FACILITY	
CHECKED BY: R. CANEKERATNE	HVAC PLAN	
SUPERVISED BY: G. PETERSON	SH REF NO M-101	CADD FILE NAME 277M101F.DWG
	FILE NO.: EGL-229-62 CONTRACT NO.: DCA01-00-C-0042 DATE: APRIL 11, 2001	