

No.	Description	Date

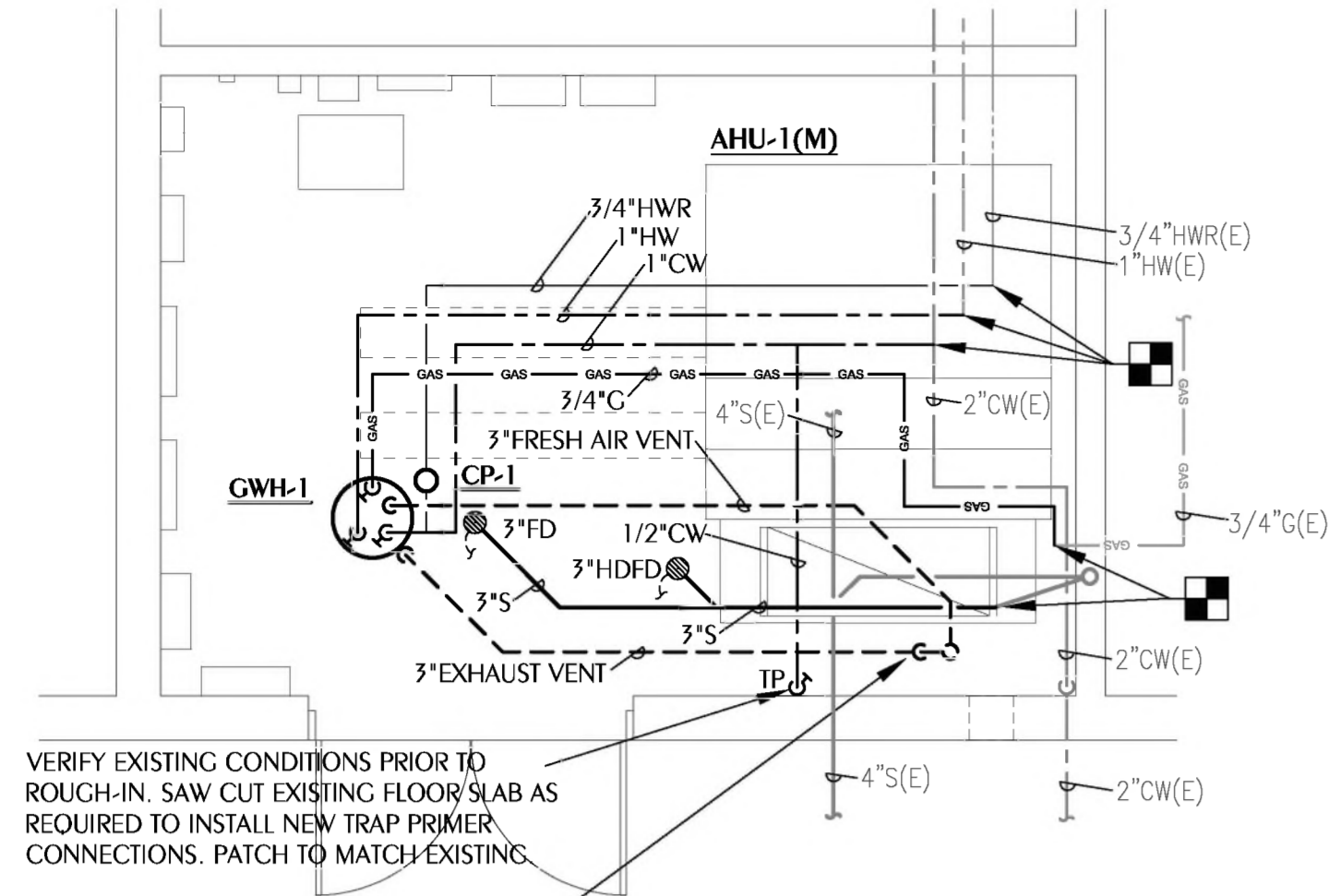
PROJECT NUMBER: 2022-101
DATE: 05-24-2024
DRAWN BY: MMI
DESIGNED BY: MMI

PLUMBING
NEW WORK

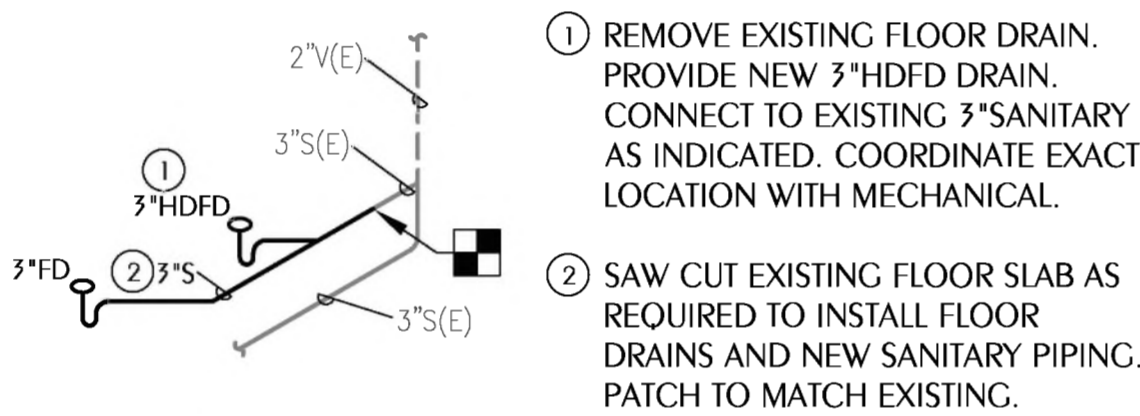
P100

MARK	FIXTURE	PIPE SIZES-INCHES			REMARKS
		CW	HW	W	
CWH-1	GAS FIRED WATER HEATER	3/4"	3/4"	-	50 GALLONS, 50,000 BTUH, FLOOR MOUNT, DRAIN PAN, STEEL SHELL DIAPHRAGM EXPANSION TANK, ROUTE PAN DRAIN TO NEAREST FLOOR DRAIN
CP-1	CIRCULATOR PUMP (INLINE)	-	3/4" FLANGE	-	STAINLESS STEEL INLINE PUMP, 44 WATTS, 115 VOLTS, 1 GPM AT 5' HEAD, ECM MOTOR, NSF CERTIFIED
FD	FLOOR DRAIN	1/2"	-	3	DEEP SEAL, TRAP PRIMER CONNECTION
HDFD	HEAVY DUTY FLOOR DRAIN	1/2"	-	3	DEEP SEAL, TRAP PRIMER CONNECTION
TP	TRAP PRIMER	1/2"	-	-	PRESSURE DROP ACTIVATED, BRASS CONSTRUCTION, DISTRIBUTION UNIT FOR 2 FLOOR DRAINS

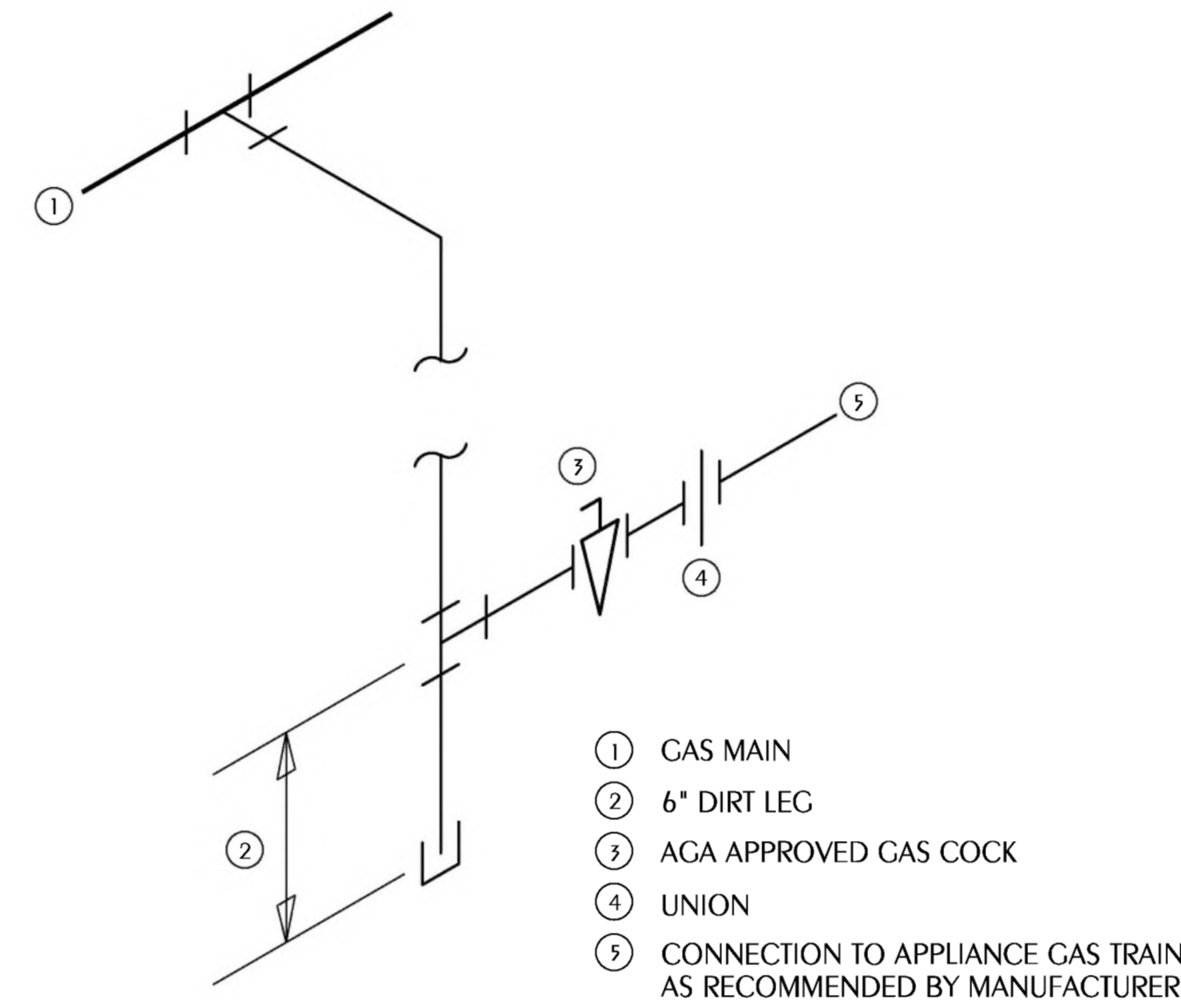
- WATER SUPPLY TAPPING TO EACH PLUMBING FIXTURE SHALL BE FULL SIZE (MINIMUM).
- SEE ELECTRICAL DWGS FOR FINAL POWER REQUIREMENTS.
- PROVIDE WATER HAMMER ARRESTERS ON HOT & COLD WATER SUPPLY BRANCHES SERVING SINGULAR, MULTIPLE OR GROUPS OF PLUMBING FIXTURES. ADHERENCE TO THE PLUMBING AND DRAINAGE INSTITUTE STANDARD P.D.I.-WH201 (PER SPECIFICATIONS) SHALL BE EMPLOYED IN DETERMINING PROPER SIZE, SELECTION, PLACEMENT, LOCATION AND INSTALLATION OF ARRESTERS.



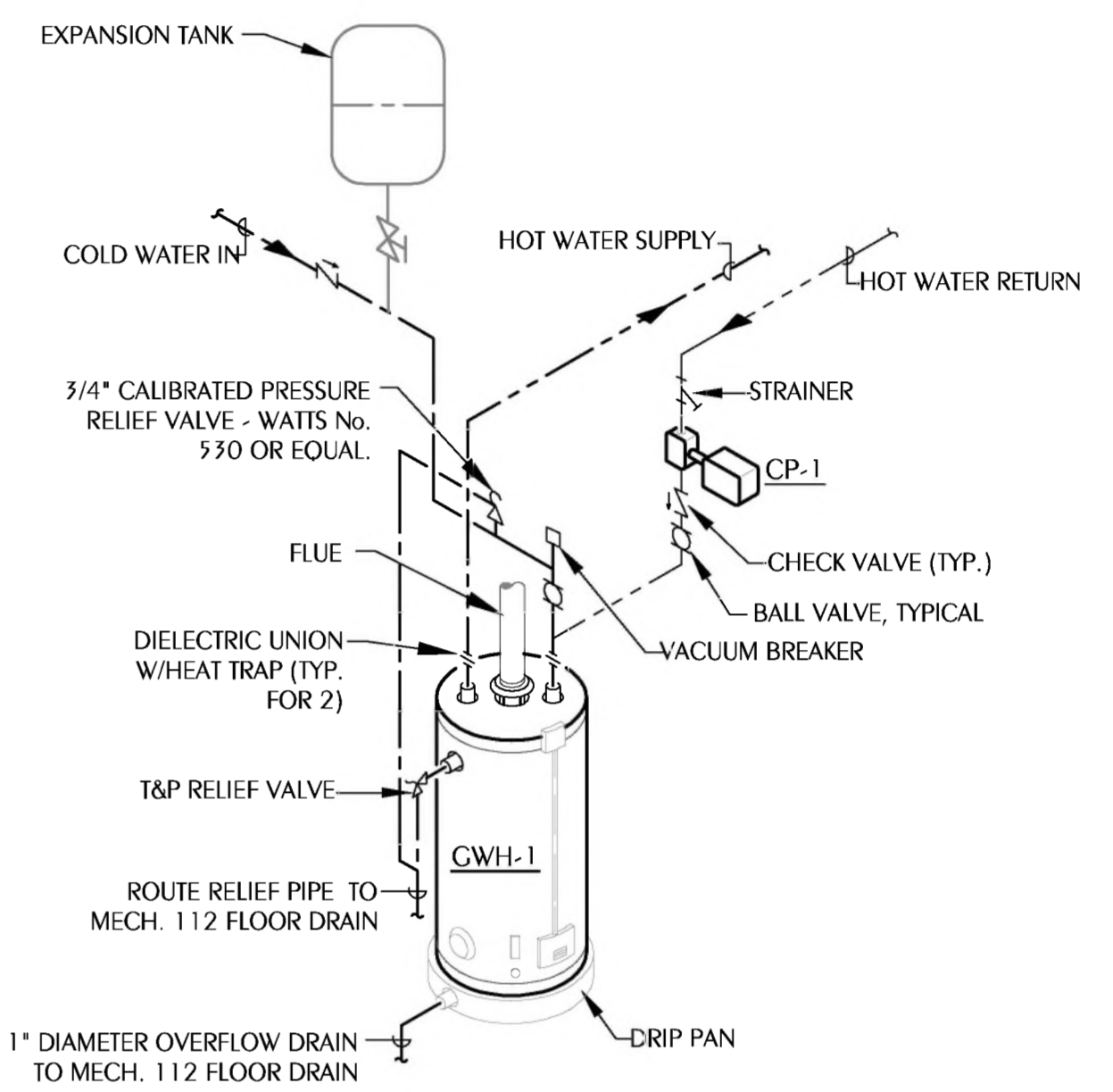
1 ENLARGED NEW WORK PLUMBING PLAN
SCALE: 1/4" = 1'-0"



2 SANITARY RISER DIAGRAM
SCALE: NONE



3 TYPICAL GAS PIPING CONNECTION DETAIL
SCALE: NONE



4 GAS FIRED WATER HEATER INSTALLATION DETAIL
SCALE: NONE

LEGEND

— S or W —	SOIL OR WASTE PIPING
- - - V - - -	VENT PIPING
— CW —	COLD WATER SUPPLY PIPING
— HW —	HOT WATER SUPPLY PIPING
— HWR —	HOT WATER RETURN PIPING
— GAS —	CAS
CV	GATE VALVE
CV	CHECK VALVE
BV	BALL VALVE
HB	HOSE BIBB
WH	WALL HYDRANT
CO	CLEANOUT TO FLOOR
FD	FLOOR DRAIN
COTG	CLEANOUT TO GRADE
COAC	CLEANOUT ABOVE CEILING
UNION	UNION
VTR	VENT THRU ROOF
1	SHEET NOTE
■	POINT OF CONNECTION TO EXISTING
CWH	GAS FIRED WATER HEATER
KW	KILOWATT
C	CAS
IRH-1(M)	EQUIPMENT TAG; (M) INDICATES MECHANICAL EQUIPMENT. REFER TO M SHEETS

PLUMBING FIXTURE SPECIFICATIONS

CWH-1 GAS FIRED WATER HEATER:
PACKAGED CONDENSING GAS WATER HEATER WITH GLASS LINED STORAGE TANK, MINIMUM UEF .88, STORAGE CAPACITY @ 50 GALLONS, RATED FOR 50,000 BTU/HR INPUT, RECOVERY 64 GPH @ 90 DEGREE F TEMP. RISE, 150 P.S.I. WORKING PRESSURE, MINIMUM THREE ONE YEAR WARRANTY. FURNISH 115 VOLT, SINGLE PHASE ELECTRICAL CHARACTERISTICS, FOR CONTROLLED ELECTRIC IGNITION SEQUENCE. PROVIDE GALVANIZED STEEL SAFETY DRIP PAN AND VERTICAL CONCENTRIC VENT. PROVIDE INLET AND OUTLET SHUT-OFF VALVES, VACUUM RELIEF VALVE ON INLET WATER SUPPLY. PROVIDE PRE-CHARGED EXPANSION TANK, OUTER STEEL SHELL (FLEXIBLE DIAPHRAGM TYPE), ON COLD WATER INLET SIDE OF WATER HEATER FOR THERMAL EXPANSION CONTROL. TANK VOLUME IN GALLONS SHALL BE OF SUFFICIENT SIZE TO ACCOMMODATE WATER HEATER SIZE IN GALLONS. PROVIDE COMPLETE VENT SYSTEM PER MANUFACTURER'S WRITTEN INSTALLATION INSTRUCTIONS.

WATER HEATER RHEEM PROP C50-50U RH HE EC3
WATTS 36A
EXPANSION TANK AMTROL "THERM-X-TROL"

3"FD FLOOR DRAIN:
DURA-COATED CAST IRON BODY WITH BOTTOM OUTLET. TYPE B POLISHED NICKEL BRONZE STRAINER, MEMBRANE CLAMP & ADJUSTABLE COLLAR WITH SLOTS.
FLOOR DRAIN ZURN Z-415B

3"HDFD FLOOR DRAIN:
DURA-COATED CAST IRON BODY, BOTTOM OUTLET, SEEPAGE PAN AND COMBINATION MEMBRANE FLASHING CLAMP AND FRAME WITH INTEGRAL TRAP PRIMER AND PLUG, WITH ANTI-TILT HEAVY DUTY SLOTTED GRATE AND SUSPENDED SEDIMENT BUCKET.
FLOOR DRAIN ZURN Z-541B-P

CP-1 CIRCULATOR PUMP (INLINE TYPE):
SELF-ADJUSTING HIGH-EFFICIENCY CIRCULATOR MADE OF ENGINEERED COMPOSITE IMPELLER, CERAMIC SHAFT, COMPOSITE CASING; A 44 WATT ECM PERMANENT MAGNET MOTOR AND ELECTRICAL CHARACTERISTICS ARE 120V/1 PHASE, 60 HZ., WITH 1" CONNECTIONS, MAXIMUM OPERATING PRESSURE OF 150 PSI, FIVE OPERATING MODES(AUTOMATIC, PROPORTIONAL PRESSURE, CONSTANT PRESSURE, PROGRAMMED SPEED, AND NIGHT SETBACK) ILL STANDARD 778 AND CSA STANDARD 22.2 NO. 108 . DIGITAL TIMER WITH CIRCULATOR PROGRAMMING. TEMPERATURE ADJUSTASAT. MAINTAINS WATER TEMPERATURE BETWEEN 95°F AND 115°F. CIRCUIT SETTER CALIBRATED BALANCE VALVE, LEAD-FREE BRASS, WITH 1/4" NPT TAPPED DRAIN PORT, MEMORY STOP FEATURE, SET AT 1 CPM.

CIRCULATOR TACO 006E3
TIMER TACO 265-3
AQUASTAT TACO 563-2
CIRCUIT SETTER XYLEM CB-1-1/2S LF

TP TRAP PRIMER
PROVIDE BRASS TRAP PRIMER AND DISTRIBUTION UNIT TO SEAL FLOOR DRAINS AS INDICATED ON THE PLANS. TRAP PRIMER VALVE SHALL BE PRESSURE DROP ACTIVATED REQUIRED 3 PSI PRESSURE DROP FOR ACTIVATION. PROVIDE WITH DISTRIBUTION UNIT FOR 2 FLOOR DRAINS.

TRAP PRIMER PPP, INC PR-500
DISTRIBUTION UNIT PPP, INC DU-U

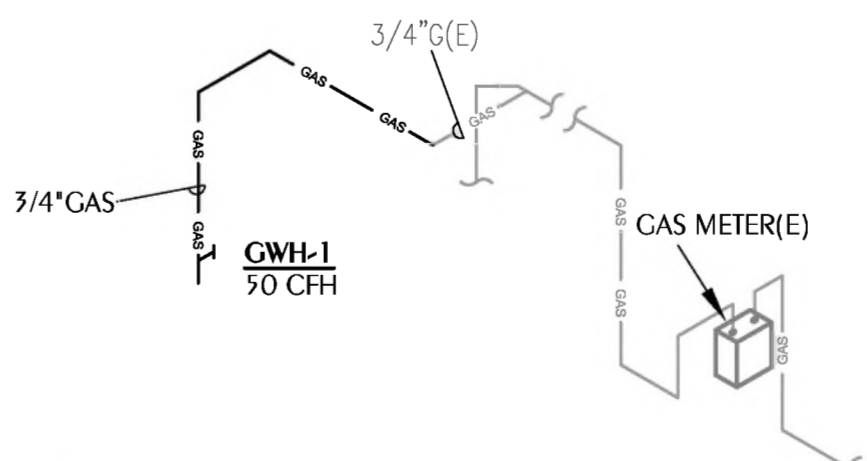
GAS FIRED EQUIP. SCHEDULE

TAG	INPUT (BTUH)	CONNECTION SIZE	INLET PRESSURE RANGE
CWH-1	50,000	3/4"	VERIFY W/ MANUF.

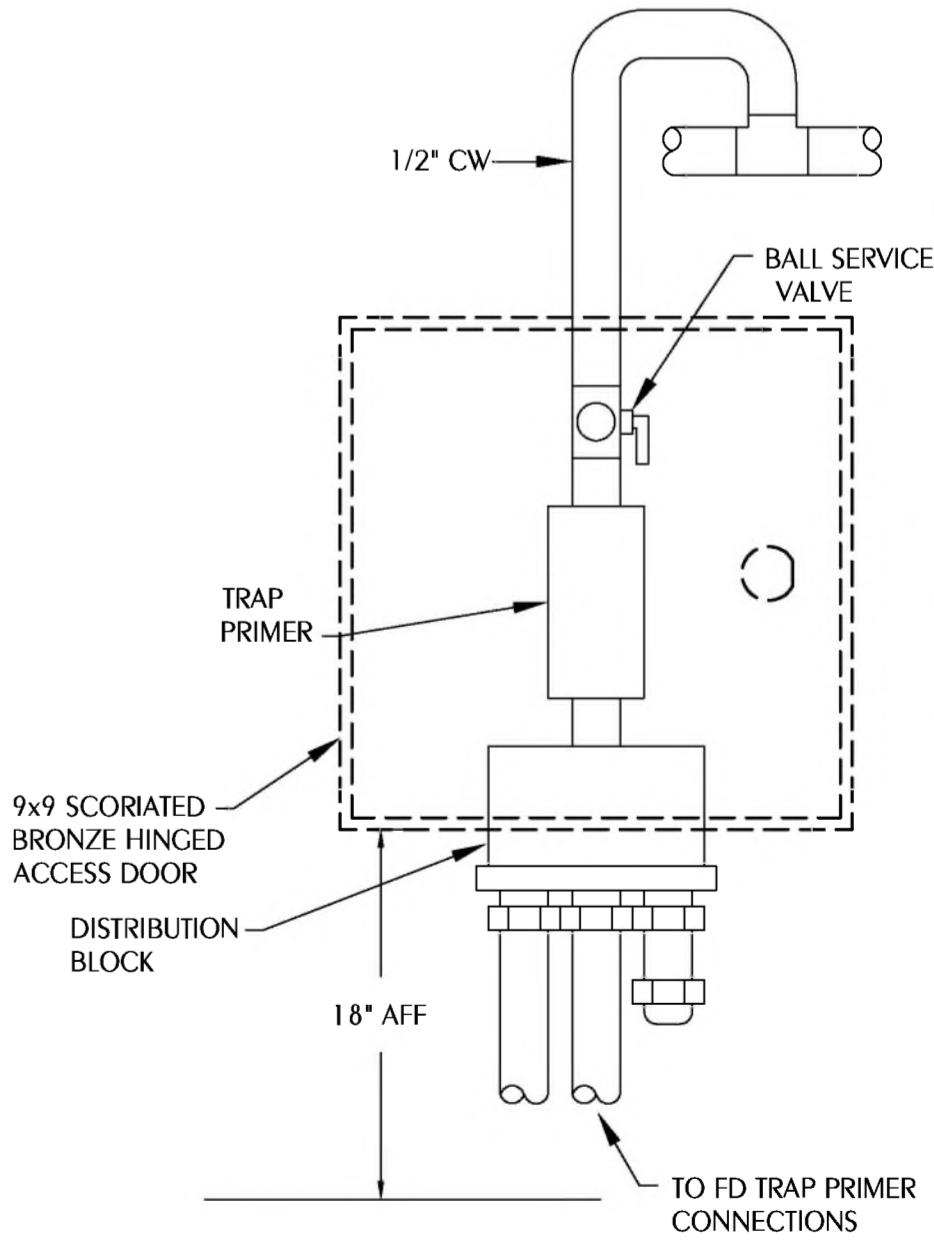
NOTE: SIZES BASED ON A NATURAL GAS SYSTEM, INLET PRESSURE OF 2 PSI OR LESS, PRESSURE DROP OF 0.5" W.C., AND A SPECIFIC GRAVITY OF 0.60.

GENERAL NOTES

- COORDINATE FINAL CONNECTION SIZE AND LOCATION WITH EQUIPMENT SUPPLIED.
- GAS PIPING WITHIN INACCESSIBLE CEILINGS AND WALLS SHALL BE WITHIN A VENTED CONDUIT.
- PROVIDE SHUT-OFF GAS COCK AT APPLIANCE.



5 GAS RISER DIAGRAM
SCALE: NONE



6 TRAP PRIMER DETAIL
SCALE: NONE