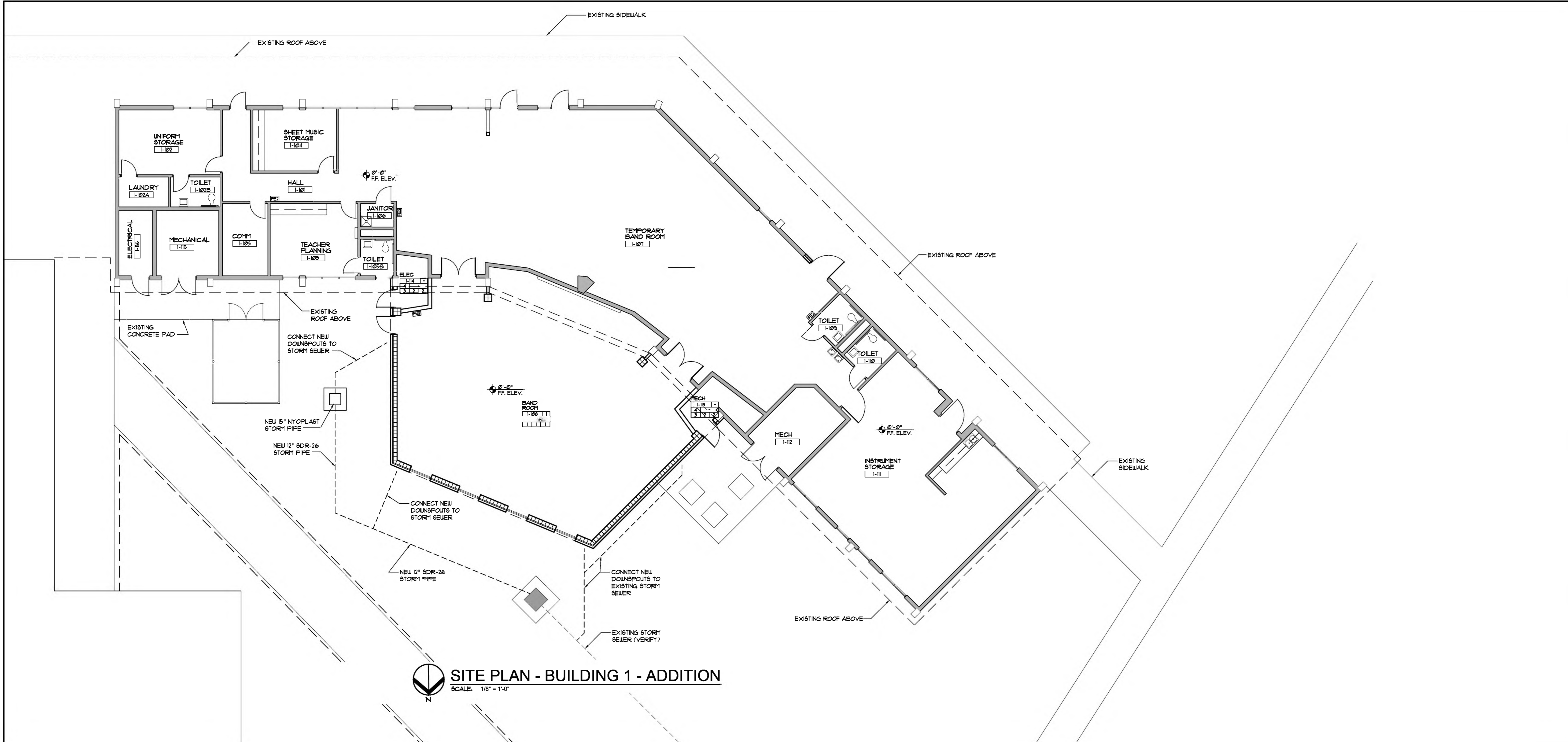


CAMPUS KEY PLAN



SITE PLAN - BUILDING 1 - ADDITION
SCALE: 1/8" = 1'-0"

REVISIONS:

NO.	DESCRIPTION	DRAWN	CHECKED	DATE
3	ASH-03 / SD	SLB	SLB	11/01/24
3	ASH-03 / DD	SLB	SLB	11/20/24
3	ASH-03 / BID SET	SLB	SLB	12/20/24

PHASE:

	DRAWN	CHECKED	DATE
SCHEMATIC DESIGN	ACM	ACM	03/22/21
REVISED SCHEMATIC	ACM	ACM	05/06/21
DESIGN DEVELOPMENT	ACM	ACM	07/22/21
CONSTRUCTION DOCUMENTS	ACM	ACM	11/19/21
BID DOCUMENTS	ACM	ACM	02/25/22
CONSOLIDATED DOCUMENTS	ACM	ACM	04/08/22
FDEM SUBMITTAL	ACM	ACM	10/14/22
PERMIT SET	ACM	ACM	11/17/22
BUILDING 3 PACKAGE	ACM	ACM	02/13/23

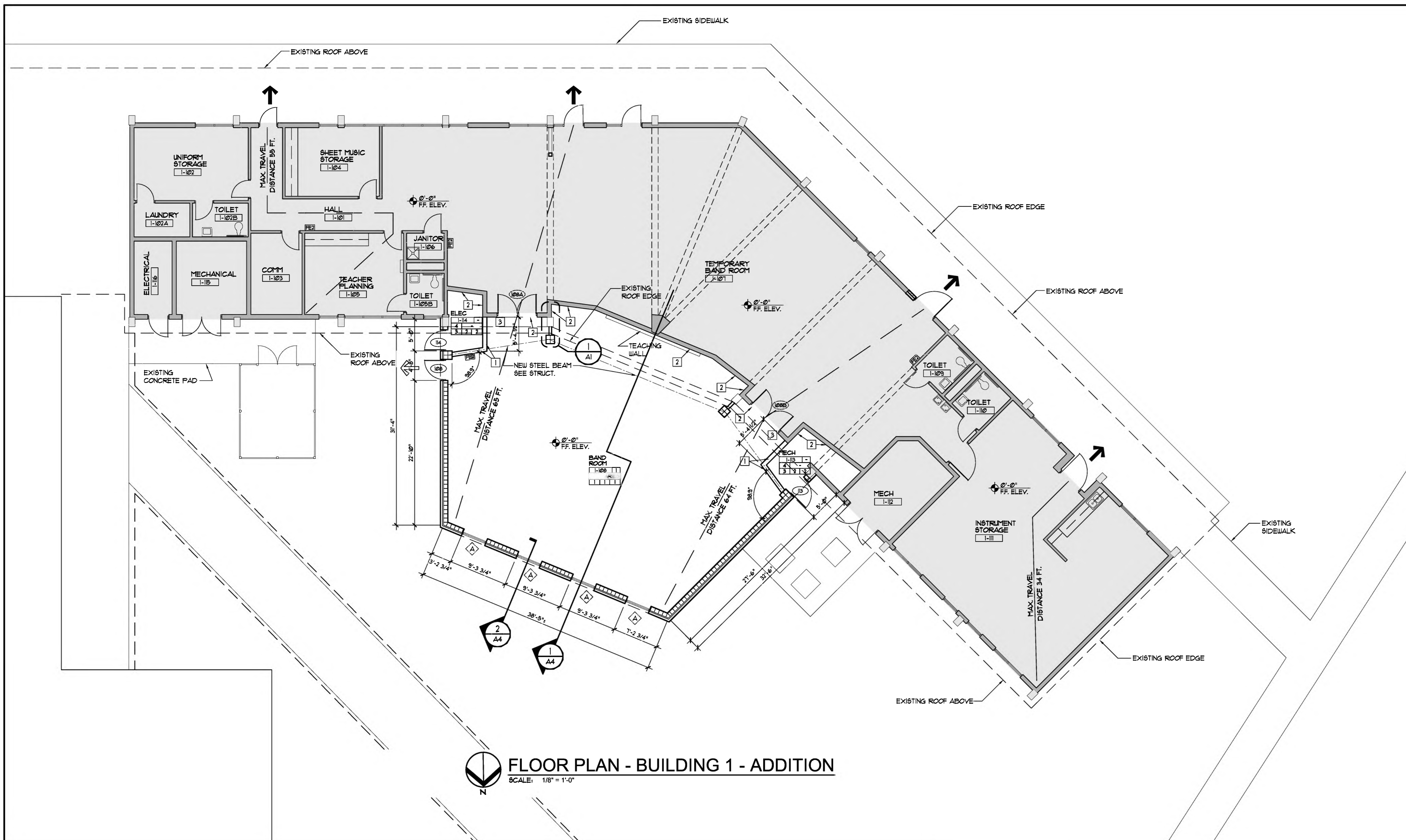
JRA ARCHITECTS 2211 THOMAS DRIVE, SUITE 100
PANAMA CITY BEACH, FL
PHONE: (850) 236-9832
Commission Number: 20793

CONSULTANTS:

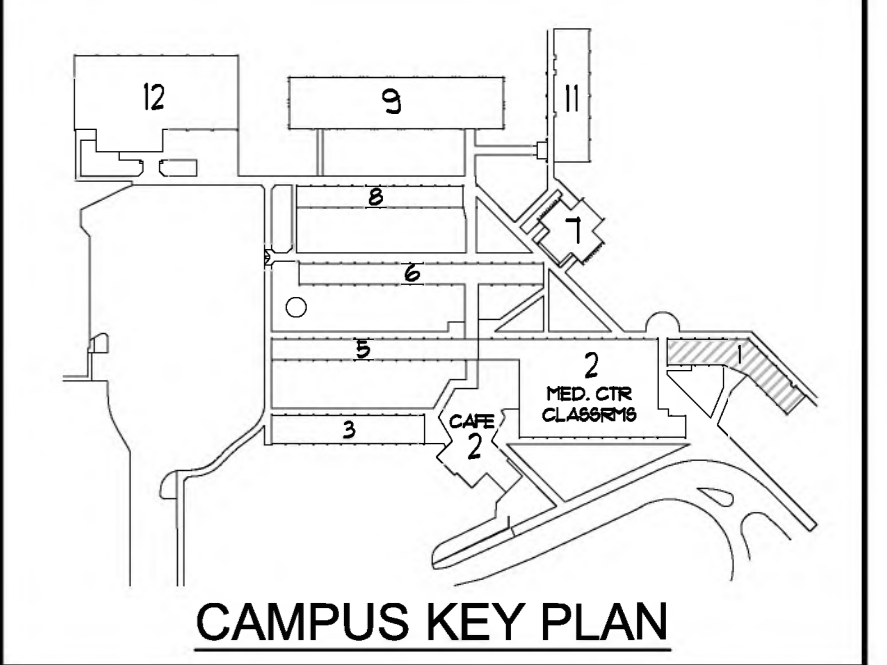
PROJECT:
MOWAT MIDDLE SCHOOL ADDITIONS AND RENOVATIONS PHASE II BAY DISTRICT SCHOOLS
BAY COUNTY, FLORIDA

SHEET TITLE:
SITE PLAN BUILDING 1 ADDITION

SHEET NUMBER:
A0.1



FLOOR PLAN - BUILDING 1 - ADDITION
SCALE: 1/8" = 1'-0"



CAMPUS KEY PLAN

FINISH SCHEDULE

- CEILING**
- SUSPENDED ACOUSTIC PANEL CEILING (ACT)
 - EPOXY PAINTED GYPSUM WALL BOARD
 - EGG-SHELL ENAMEL PAINTED GYPSUM WALL BOARD
 - PAINTED EXPOSED STRUCTURE
- FLOORS**
- CARPET
 - CERAMIC TILE
 - SEALED CONCRETE
- BASE**
- VINYL
 - NONE
- WALLS**
- EGG-SHELL ENAMEL PAINTED GYPSUM WALL BOARD
 - EPOXY PAINTED GYPSUM WALL BOARD
- REMARKS**
- PROVIDE CONT 3/8" SOUND BATTS ABOVE FINISH CEILING.
 - PROVIDE 5/8" PAINTED PLYWOOD BACKBOARD - COORDINATE WITH ELECTRICAL.
 - SLOPE TO FLOOR DRAINS, SEE STRUCT. COORD WITH FINISH FLOOR INSTALLER.
 - PROVIDE MR GYP. BD. ON THE CEILING IN THIS SPACE

CONSTRUCTION KEY NOTES

- 8" GALVANIZED METAL STUDS (GMS) AT 16" O.C. WITH 5/8" MR. GUB ON EACH SIDE. WALL TO BE FILLED SOLID WITH FOAM INSULATION.
- INSTALL 5/8" MR. GUB OVER EXISTING DENS-GLASS ON EXISTING METAL STUD WALL.
- REPLACE EXISTING 4'-0" x 7'-0" INSULATED METAL DOOR WITH NEW 4'-0" x 7'-0" SOLID WOOD DOOR DOOR TO BE NARROW LITE DOOR. DOOR HARDWARE TO BE CLASSROOM FUNCTION. COORDINATE KEYING WITH OWNER.
- PROVIDE AND INSTALL NEW FIRE EXTINGUISHER AND CABINET TO MATCH EXISTING IN THIS LOCATION.

GENERAL NOTES:

ALL WIDTH AND HEIGHT INFORMATION SHOWN ARE NOMINAL DIMENSIONS FOR REFERENCE ONLY. ACTUAL DIMENSIONS SHALL BE ADJUSTED FOR PROPER CLEARANCES, SHIM SPACES AND CONSTRUCTION TOLERANCES BY THE CONTRACTOR AND SUBMITTED FOR APPROVAL.

SILL HEIGHTS ABOVE FF. ARE TYPICAL. CONDITIONS UO.N. ALL WINDOWS WITHIN 4'-0" OF ADJACENT DOORS ARE TO HAVE TEMPERED GLASS.

COORD W/ MECHANICAL FOR DOOR UNDERCUTS.

8" SUFFIX AT HEAD, JAMB & SILL DETAIL REFERENCES IN DOOR SCHEDULE DEVOTES SIMILAR CONDITION.

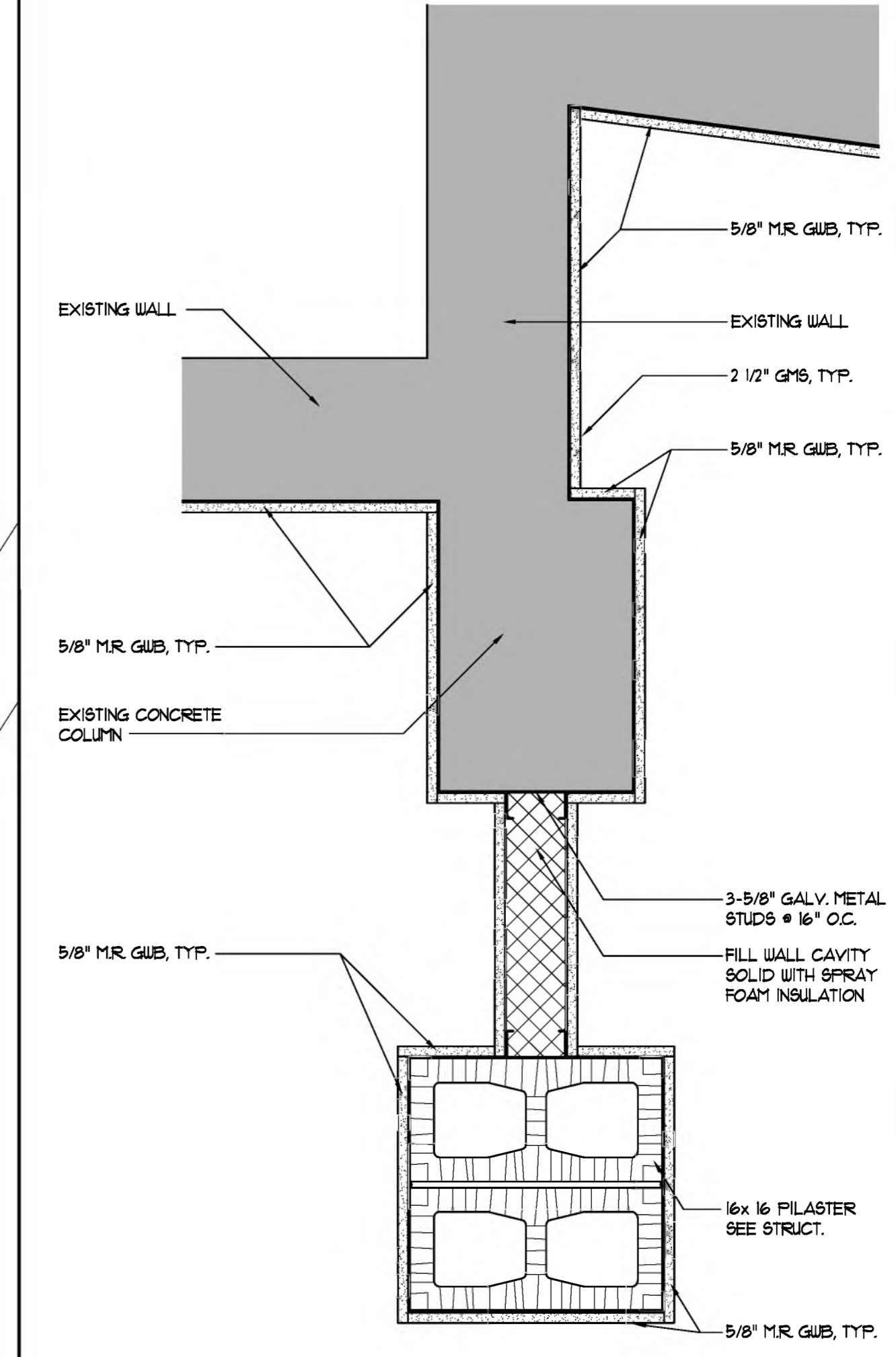
DOOR SCHEDULE REMARKS:

- ACCESS CONTROLS, SEE TELECOM DUGS
- REMOTE DOOR RELEASE, SEE TELECOM DUGS
- WIDTH IS ROUGH OPENING WIDTH

GLAZING TYPES:

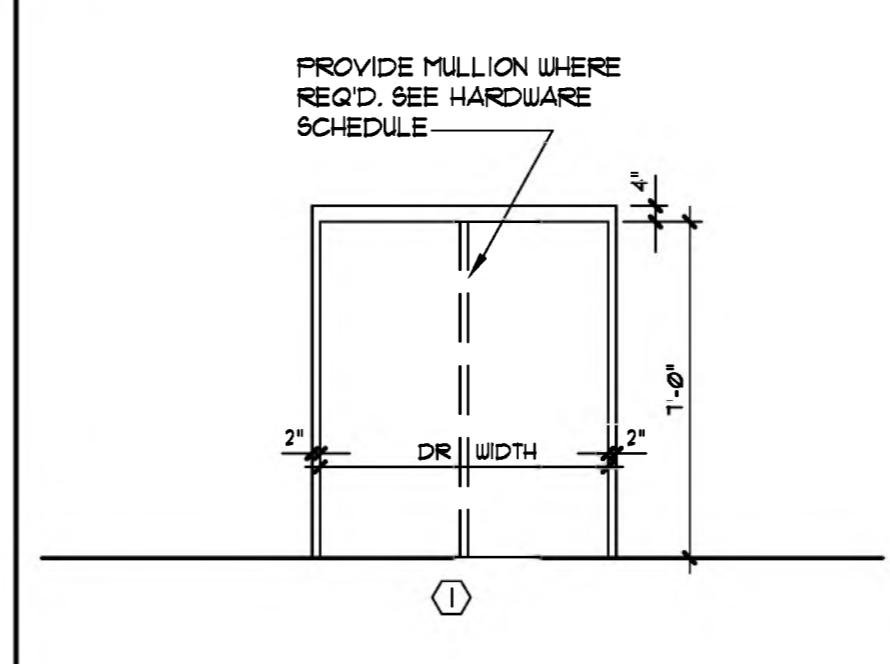
TYPE GL-1: 1/4" TEMPERED, SEE SPECIFICATIONS.

TYPE GL-3: 1" INSULATED, SEE SPECIFICATIONS.

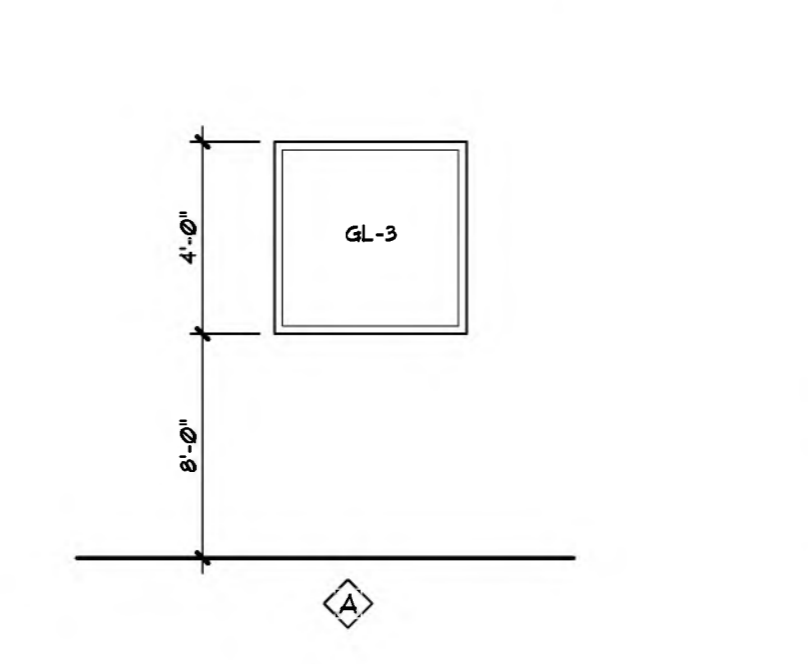


1 COLUMN DETAIL
SCALE: 1 1/2" = 1'-0"

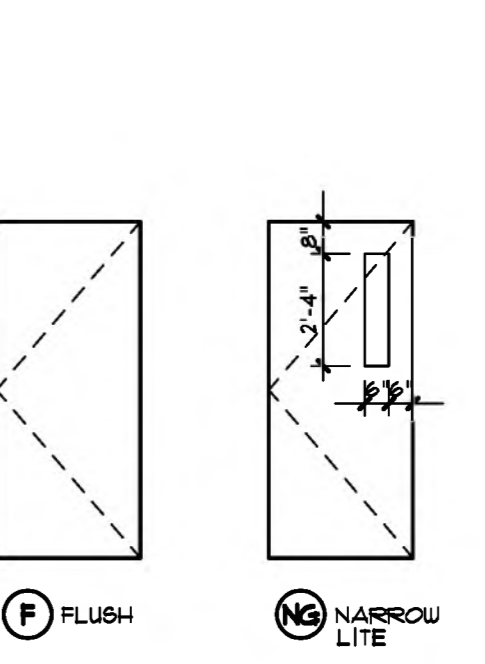
MARK	TYPE	WIDTH	HEIGHT	THICK	DOOR MAT	GLAZING	RATING	FRAME TYPE	FRAME MAT	HEAD	JAMB	SILL	REMARKS
108	F	3-0	7-0	1-3/4	H.M.	-	-	2	HM	6/AI	4&5/AI	2/AI	-
108A	F	3-0	7-0	1-3/4	SCWD	GL-1	-	2	EXIST	3/AI	3/AI	2/AI	-
108B	NL	FR 3-0	7-0	1-3/4	SCWD	GL-1	-	2	EXIST	3/AI	3/AI	2/AI	-
113	F	3-0	7-0	1-3/4	H.M.	-	-	2	HM	6/AI	4&5/AI	2/AI	-
114	F	3-0	7-0	1-3/4	H.M.	-	-	1	HM	6/AI	4&5/AI	2/AI	-



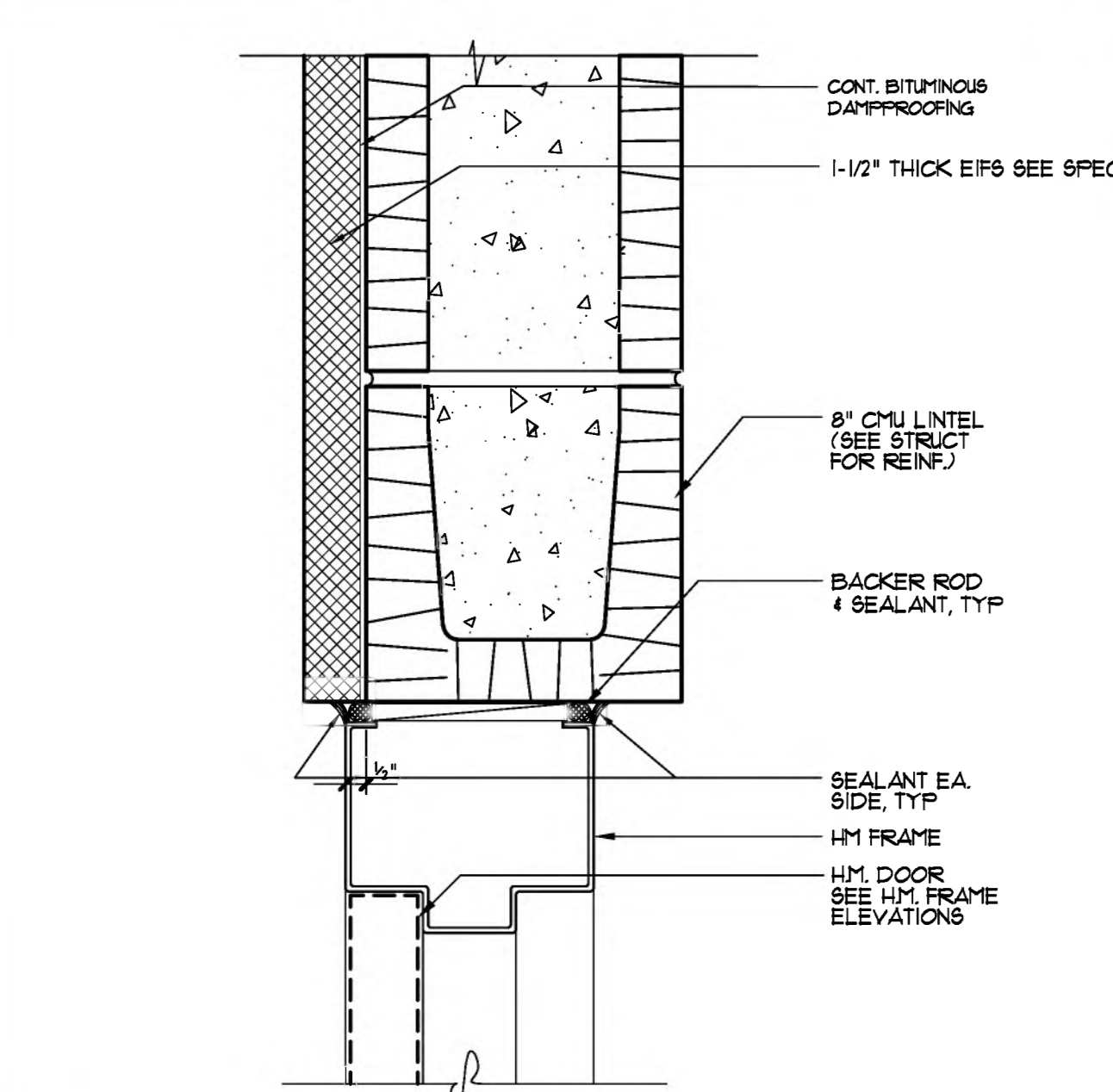
HM FRAME ELEVATIONS
SCALE: 1/4" = 1'-0"



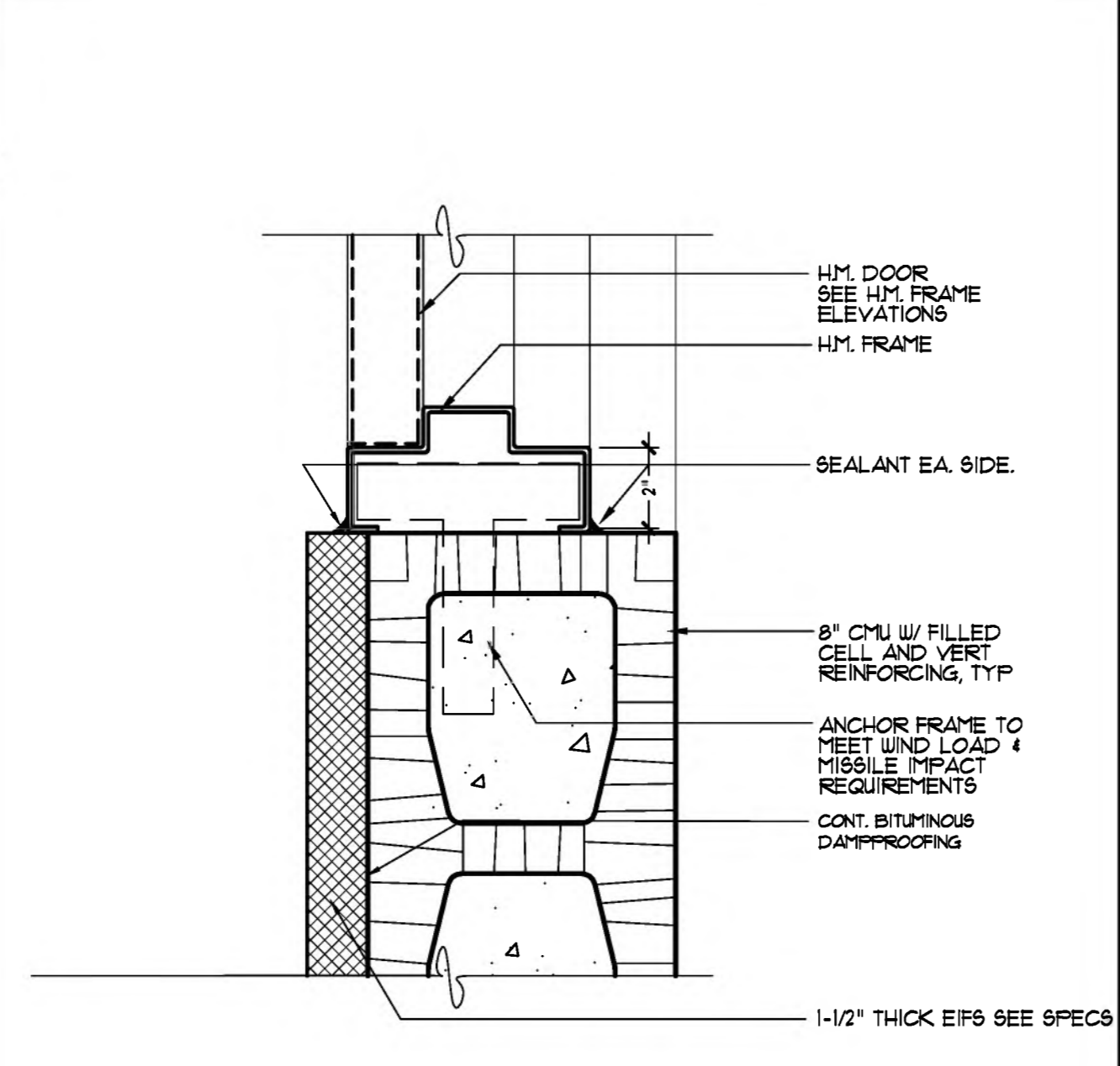
ALUM FRAME ELEVATIONS
SCALE: 1/4" = 1'-0"



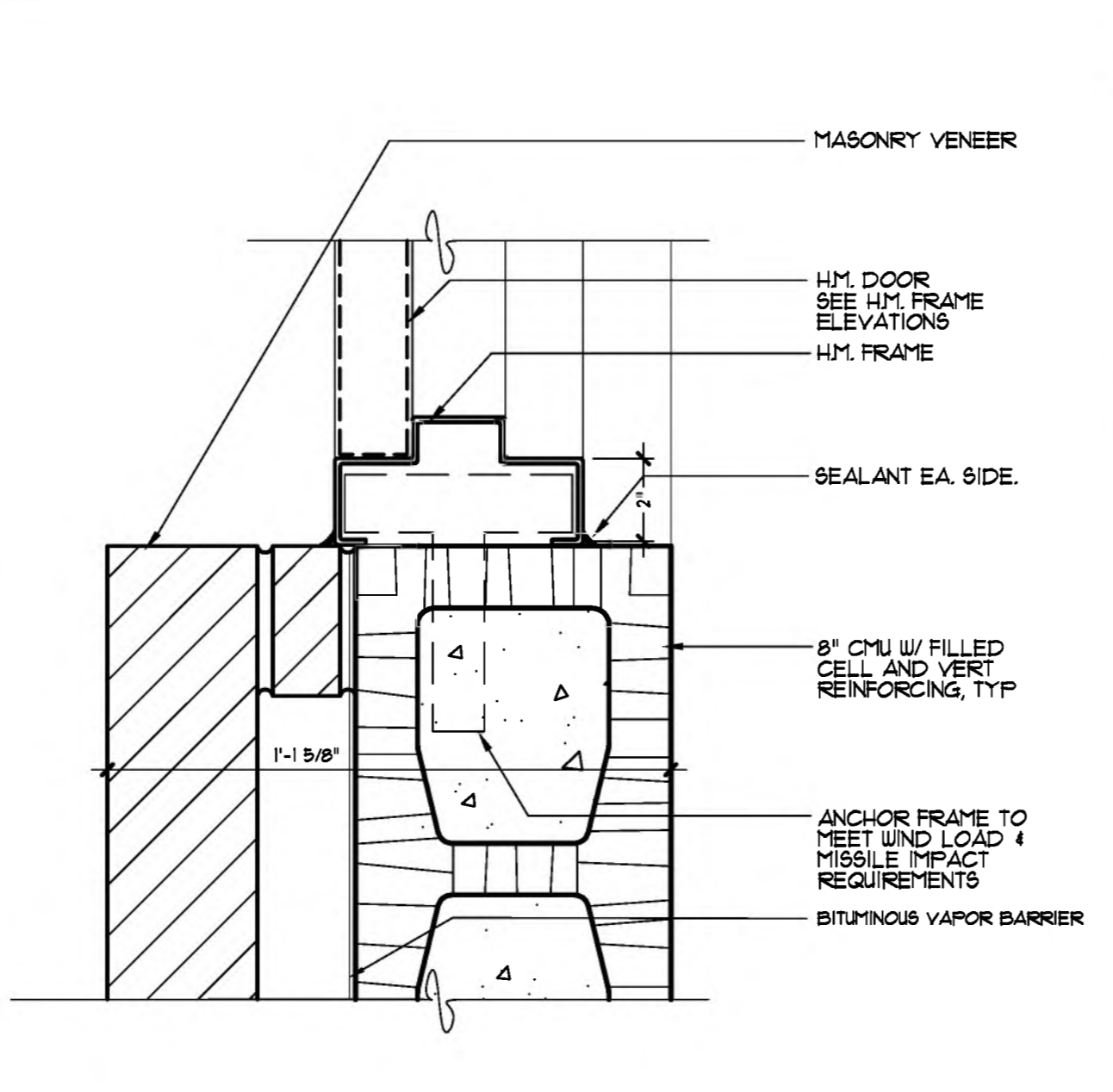
DOOR TYPES
SCALE: N.T.S.



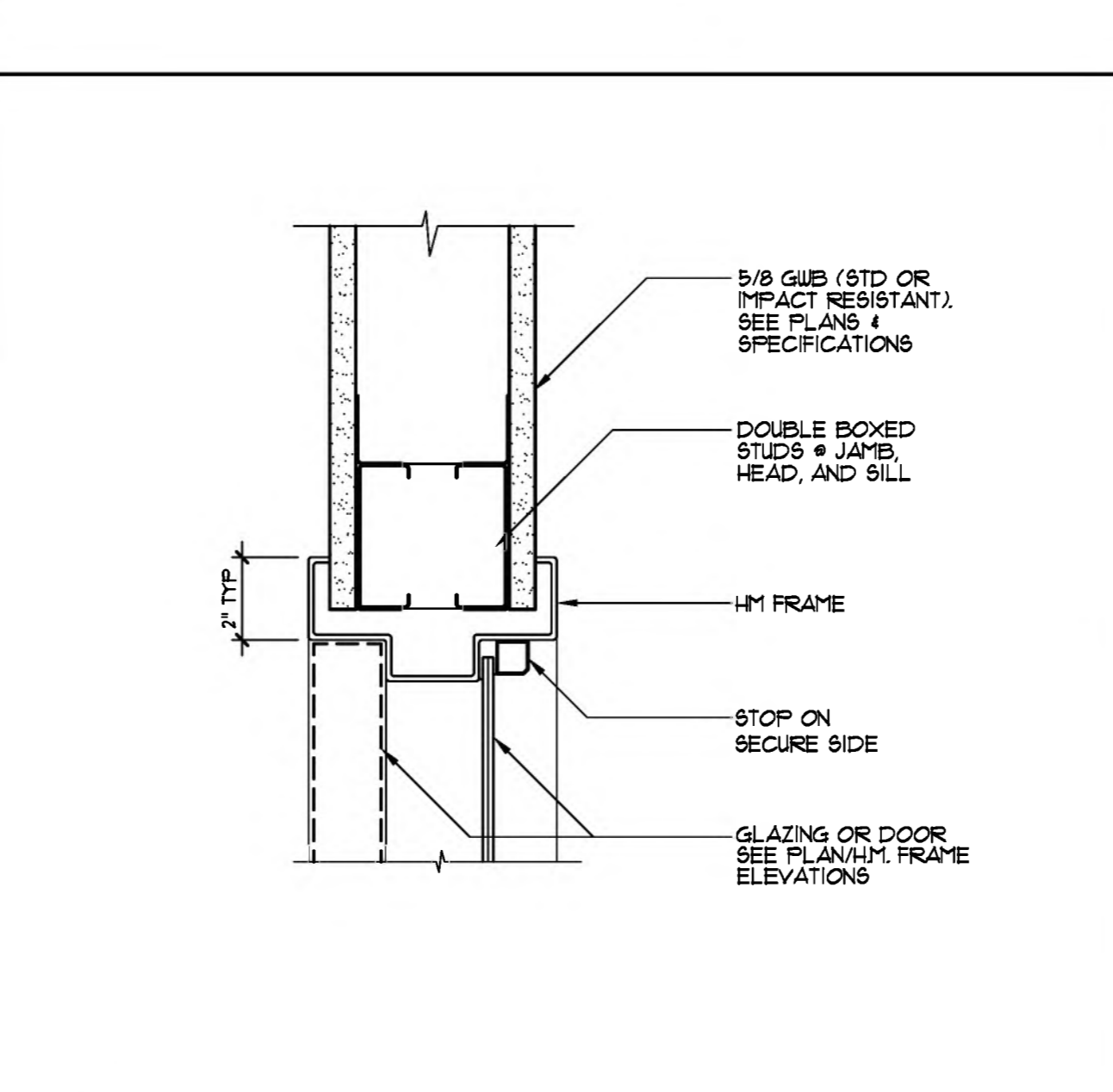
6 HEAD DETAIL
SCALE: 3" = 1'-0"



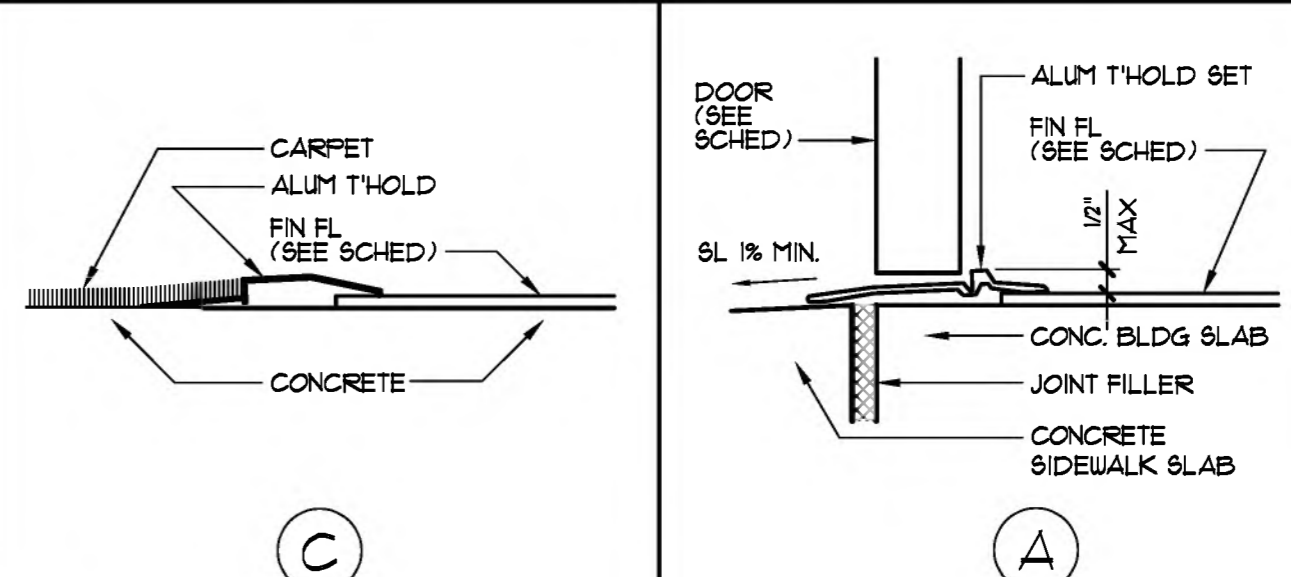
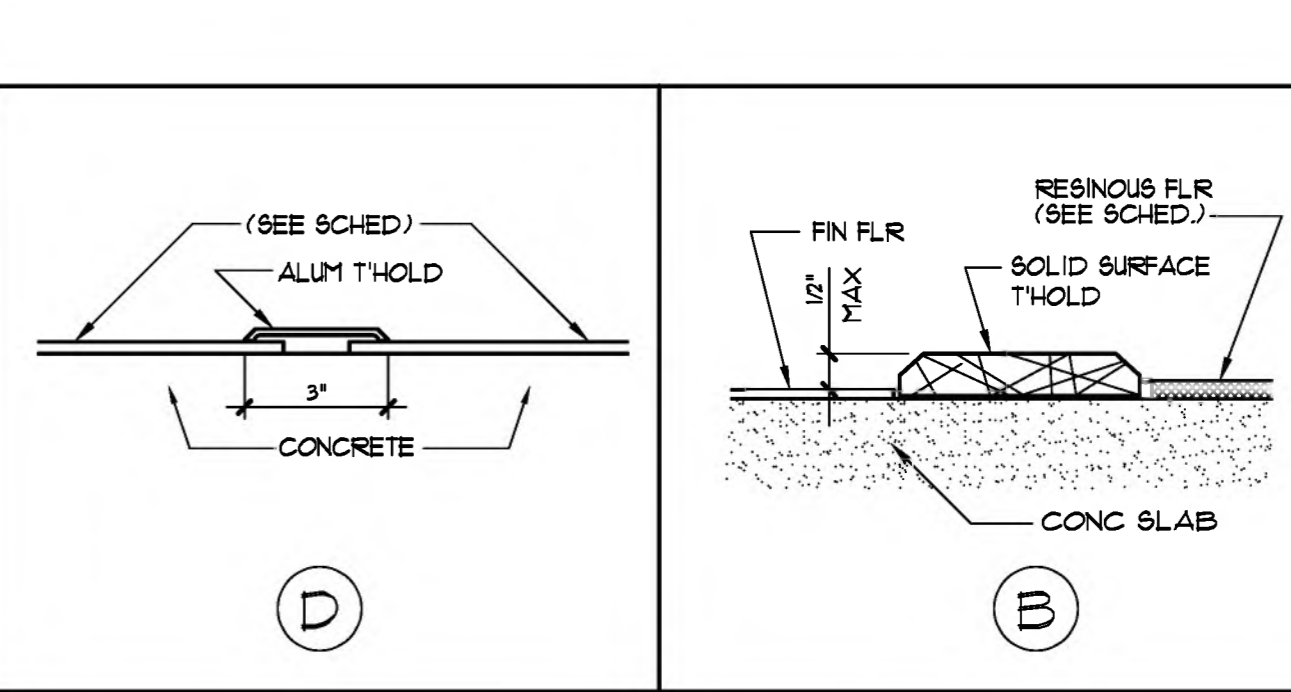
5 JAMB DETAIL
SCALE: 3" = 1'-0"



4 JAMB DETAIL
SCALE: 3" = 1'-0"



3 HEAD, JAMB, SILL DETAIL
SCALE: 3" = 1'-0"



2 THRESHOLD DETAILS
SCALE: 3" = 1'-0"

REVISIONS:

NO.	DESCRIPTION	DRAWN	CHECKED	DATE
3	ASH-03 / SD	SLB	SLB	11/01/24
3	ASH-03 / DD	SLB	SLB	11/20/24
3	ASH-03 / BID SET	SLB	SLB	12/20/24

PHASE:

	DRAWN	CHECKED	DATE
SCHEMATIC DESIGN	ACM	ACM	03/22/21
REVISED SCHEMATIC	ACM	ACM	05/06/21
DESIGN DEVELOPMENT	ACM	ACM	07/22/21
CONSTRUCTION DOCUMENTS	ACM	ACM	11/19/21
BID DOCUMENTS	ACM	ACM	02/25/22
CONSOLIDATED DOCUMENTS	ACM	ACM	04/08/22
FDEM SUBMITTAL	ACM	ACM	10/14/22
PERMIT SET	ACM	ACM	11/17/22
BUILDING 3 PACKAGE	ACM	ACM	02/13/23

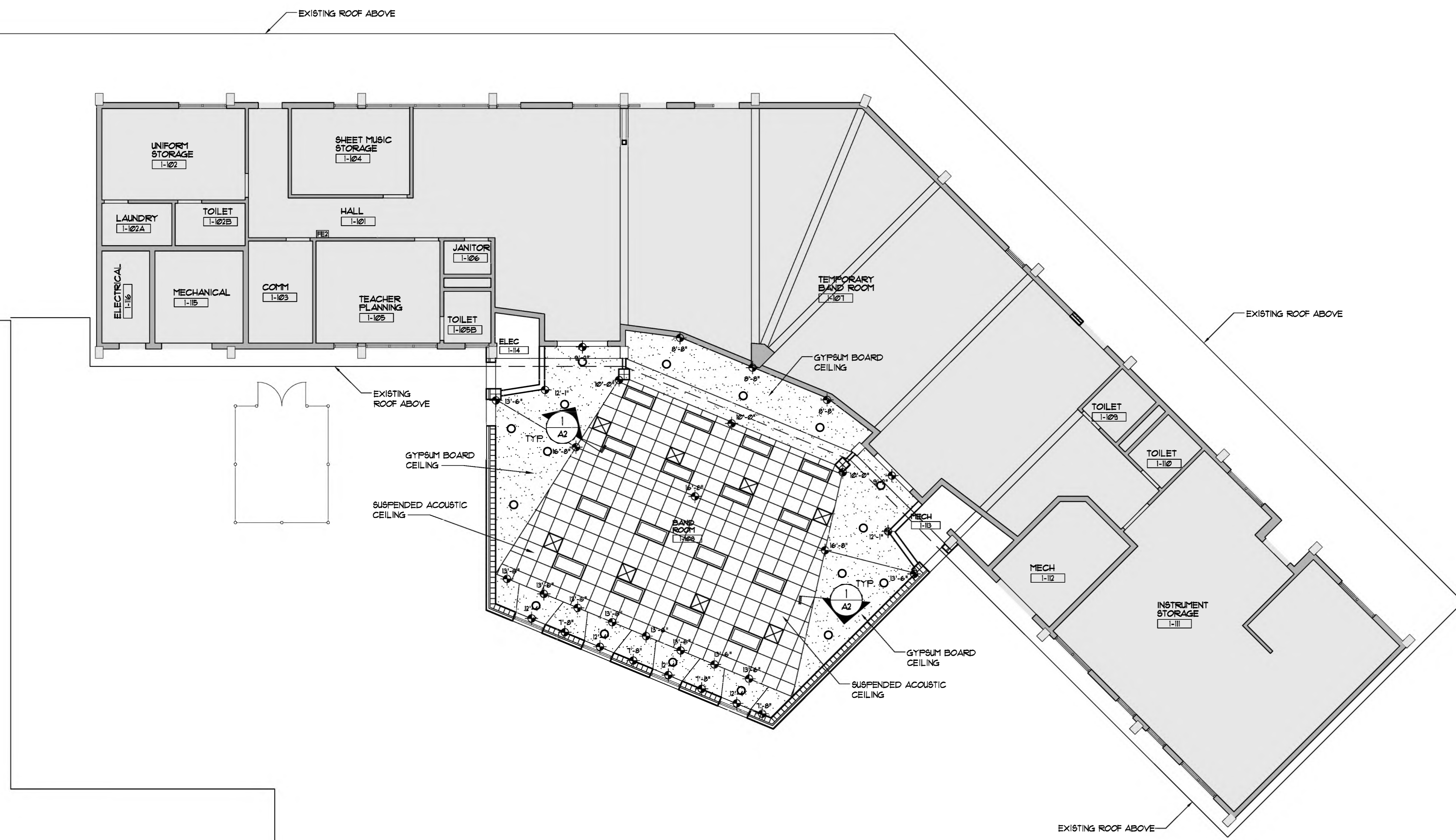
JRA ARCHITECTS
2211 THOMAS DRIVE, SUITE 100
PANAMA CITY BEACH, FL
PHONE: (850) 236-9832
Commission Number: 20783

CONSULTANTS:

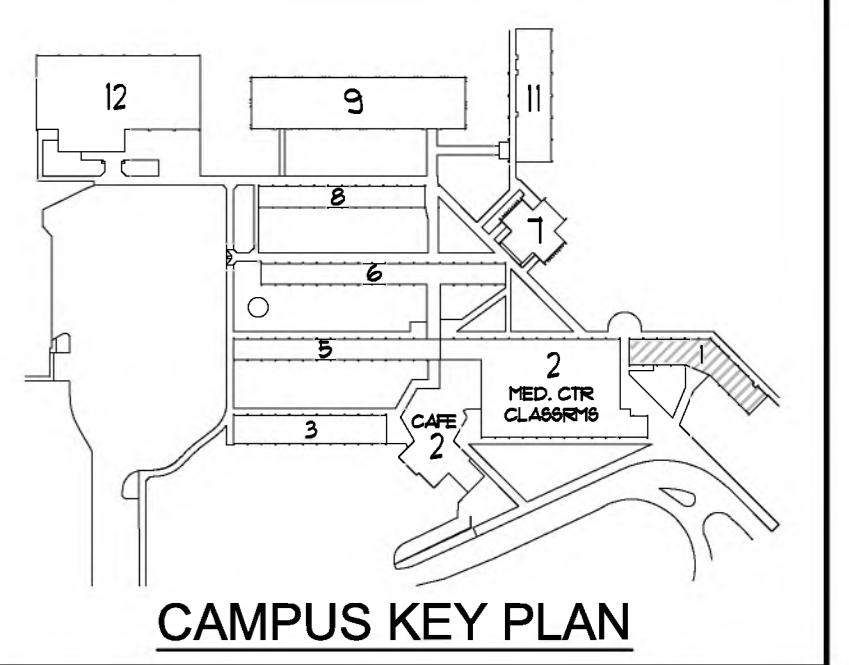
PROJECT:
MOWAT MIDDLE SCHOOL
ADDITIONS AND
RENOVATIONS PHASE II
BAY DISTRICT SCHOOLS
BAY COUNTY, FLORIDA

SHEET TITLE:
FLOOR PLAN
BUILDING 1 ADDITION

SHEET NUMBER:
A1



REFLECTED CEILING PLAN - BUILDING 1 - ADDITION
SCALE: 1/8" = 1'-0"



- SYMBOL LEGEND**
- 2'x4' LED FIXTURE
 - 2'x2' LED FIXTURE
 - ▬ 6'x4' LED SUSPENDED FIXTURE
 - ▬ STRIP LED SUSPENDED FIXTURE
 - RECESSED LIGHT FIXTURE
 - WALL MOUNTED LIGHT FIXTURE
 - ⊥ WALL MOUNTED LED FIXTURE
 - ⊥ WALL MOUNTED EMERGENCY LIGHT
 - ⊥ CEILING MOUNTED EMERGENCY LIGHT FIXTURE
 - ⊗ EXIT LIGHT FIXTURE
 - ⊗ SUPPLY AIR DUCT (SIZE VARIES)
 - ⊗ RETURN OR OUTSIDE AIR DUCT (SIZE VARIES)
 - ⊗ EXHAUST AIR DUCT (SIZE VARIES)
 - ▭ SUSPENDED 2'x2' ACOUSTIC CEILING TILE SYSTEM
 - ▭ SUSPENDED GYPSUM BOARD CEILING, BULKHEADS & SOFFITS. (SEE FIN. SCHEDULE PLANS & SPECS FOR SUB TYPE AND OTHER REQUIREMENTS).
 - ▭ EXPOSED STRUCTURE
 - ▭ EXPOSED STEEL DECK

- NOTES:**
1. NOT ALL ITEMS MAY BE REQUIRED - SEE PLANS
 2. SEE MECHANICAL, PLUMBING, ELECTRICAL AND FIRE-PROTECTION SHEETS FOR ADDITIONAL CEILING FIXTURES AND SYSTEMS INFORMATION.
 3. COORDINATE WITH ARCHITECT/ENGINEER WHERE FIXTURE OR DEVICE LOCATION SHOWN IN THIS PLAN IS IN CONFLICT WITH LOCATION SHOWN ON M, E, P, & FF PLANS.
 4. PRIOR TO ROUGH-IN, COORDINATE WITH ARCHITECT/ENGINEER WHERE FIXTURE OR DEVICE LOCATION IS IN CONFLICT WITH ARCHITECTURAL FEATURES ETC.

REVISIONS:

NO.	DESCRIPTION	DRAWN	CHECKED	DATE
3	ASH-03 / SD	SLB	SLB	11/01/24
3	ASH-03 / DD	SLB	SLB	11/20/24
3	ASH-03 / BID SET	SLB	SLB	12/20/24

PHASE:

	DRAWN	CHECKED	DATE
SCHEMATIC DESIGN	ACM	ACM	03/22/21
REVISED SCHEMATIC	ACM	ACM	05/06/21
DESIGN DEVELOPMENT	ACM	ACM	07/22/21
CONSTRUCTION DOCUMENTS	ACM	ACM	11/19/21
BID DOCUMENTS	ACM	ACM	02/25/22
CONSOLIDATED DOCUMENTS	ACM	ACM	04/08/22
FDEM SUBMITTAL	ACM	ACM	10/14/22
PERMIT SET	ACM	ACM	11/17/22
BUILDING 3 PACKAGE	ACM	ACM	02/13/23

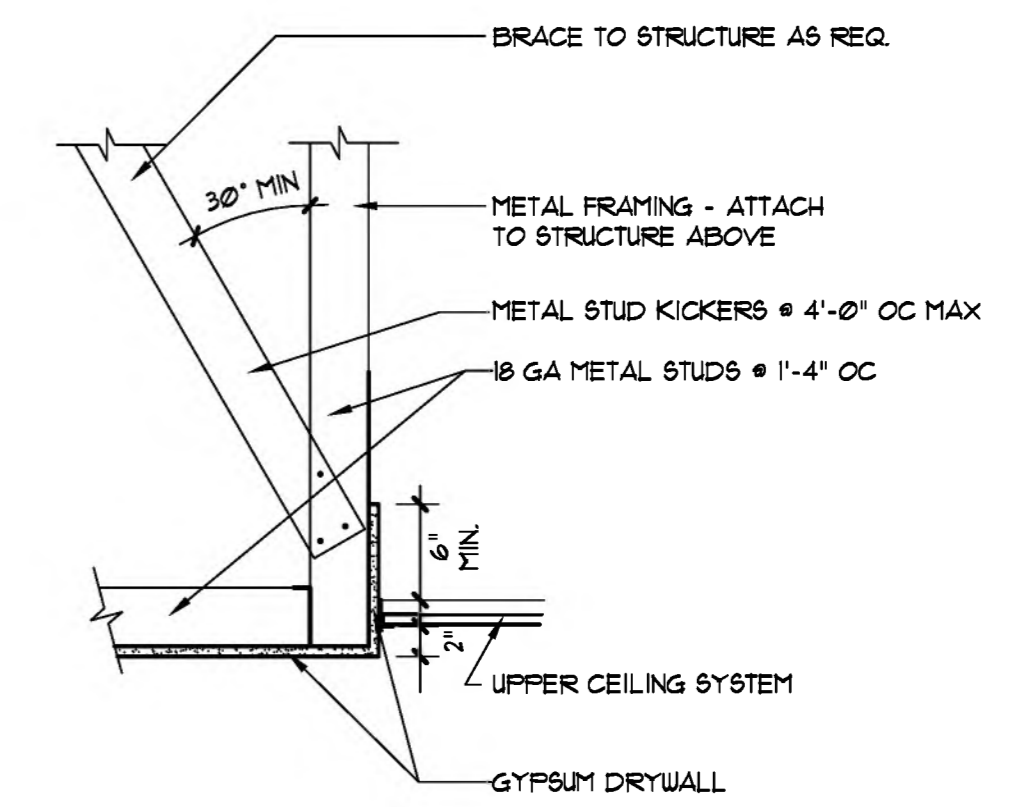
JRA ARCHITECTS 2211 THOMAS DRIVE, SUITE 100
PANAMA CITY BEACH, FL
PHONE: (850) 236-9832
Commission Number: 20783

CONSULTANTS:

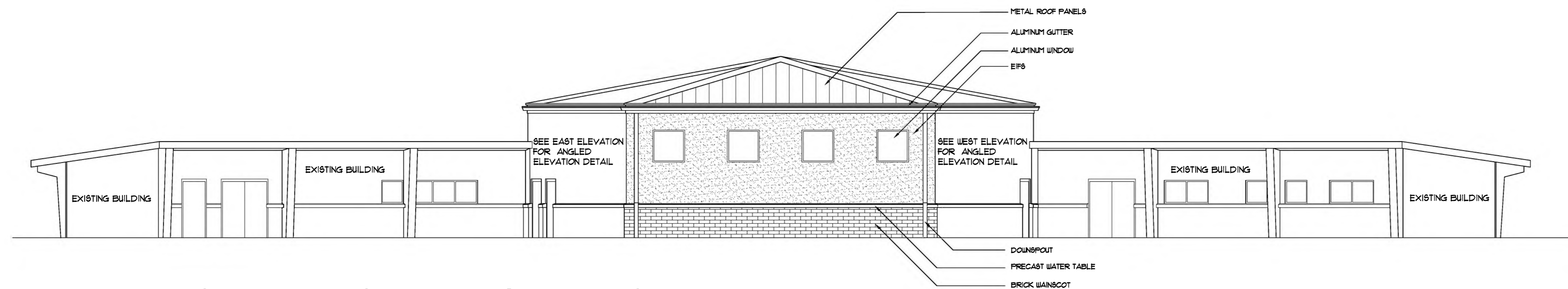
PROJECT:
MOWAT MIDDLE SCHOOL
ADDITIONS AND
RENOVATIONS PHASE II
BAY DISTRICT SCHOOLS
BAY COUNTY, FLORIDA

SHEET TITLE:
REFLECTED CEILING PLAN
BUILDING 1 ADDITION

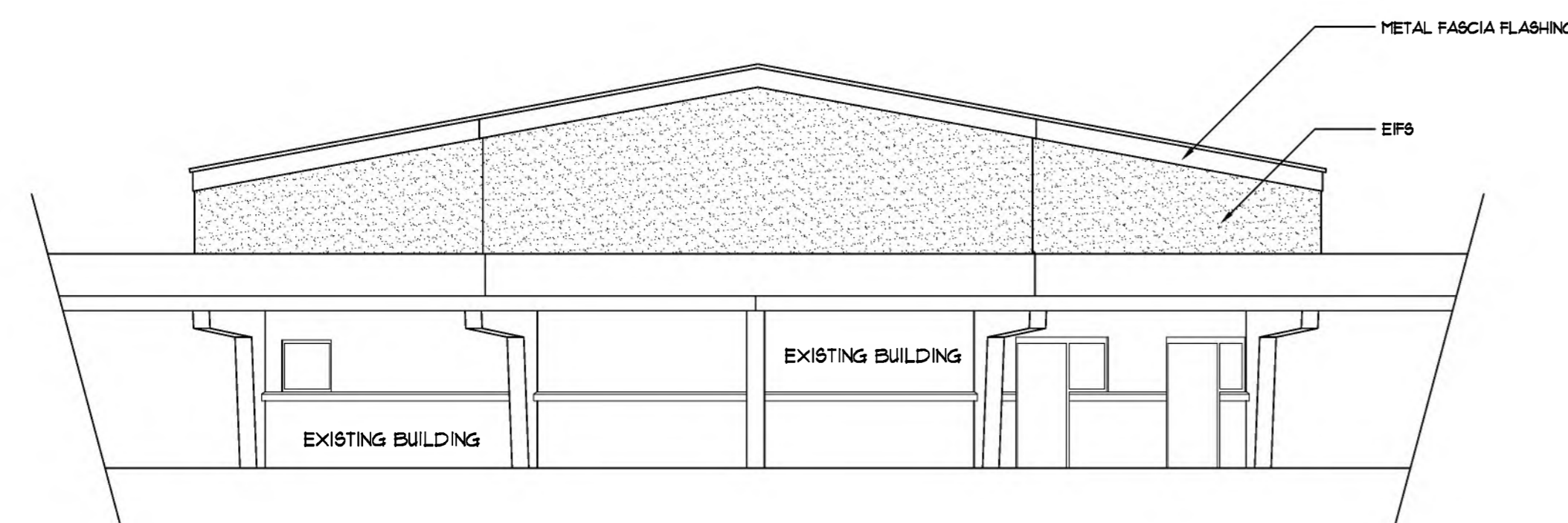
SHEET NUMBER:
A2



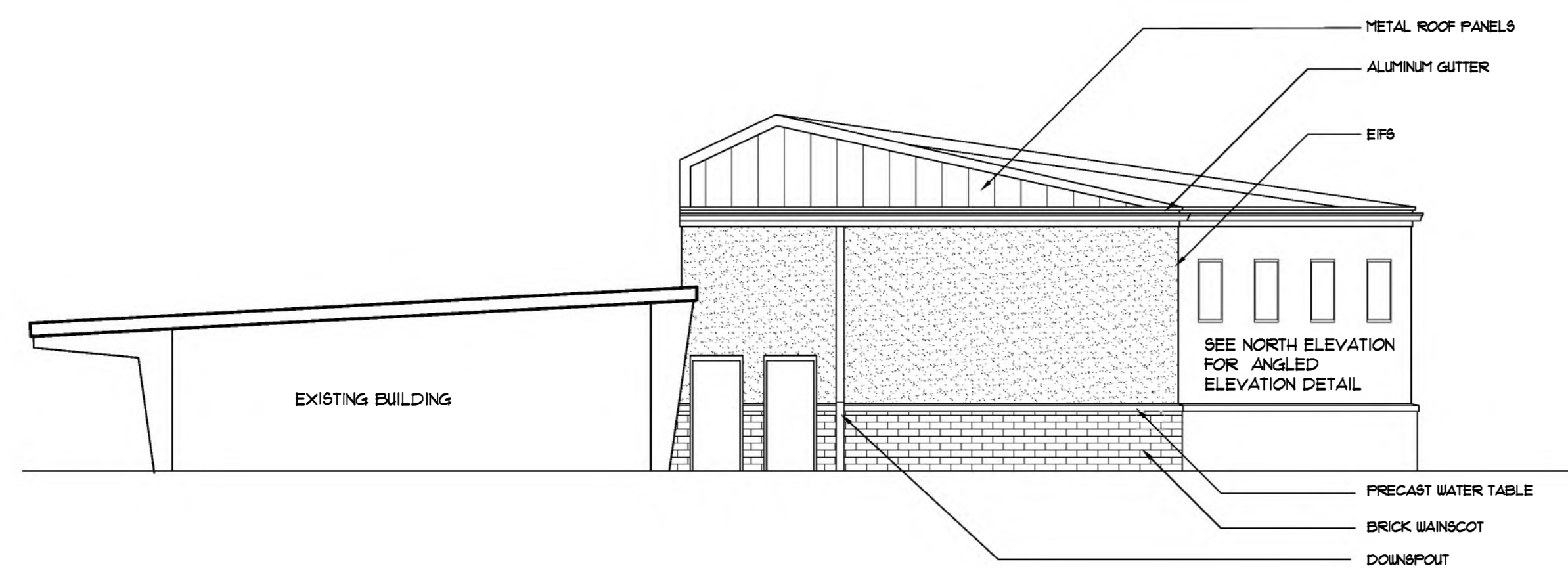
BULK HEAD DTL
SCALE: 1" = 1'-0"



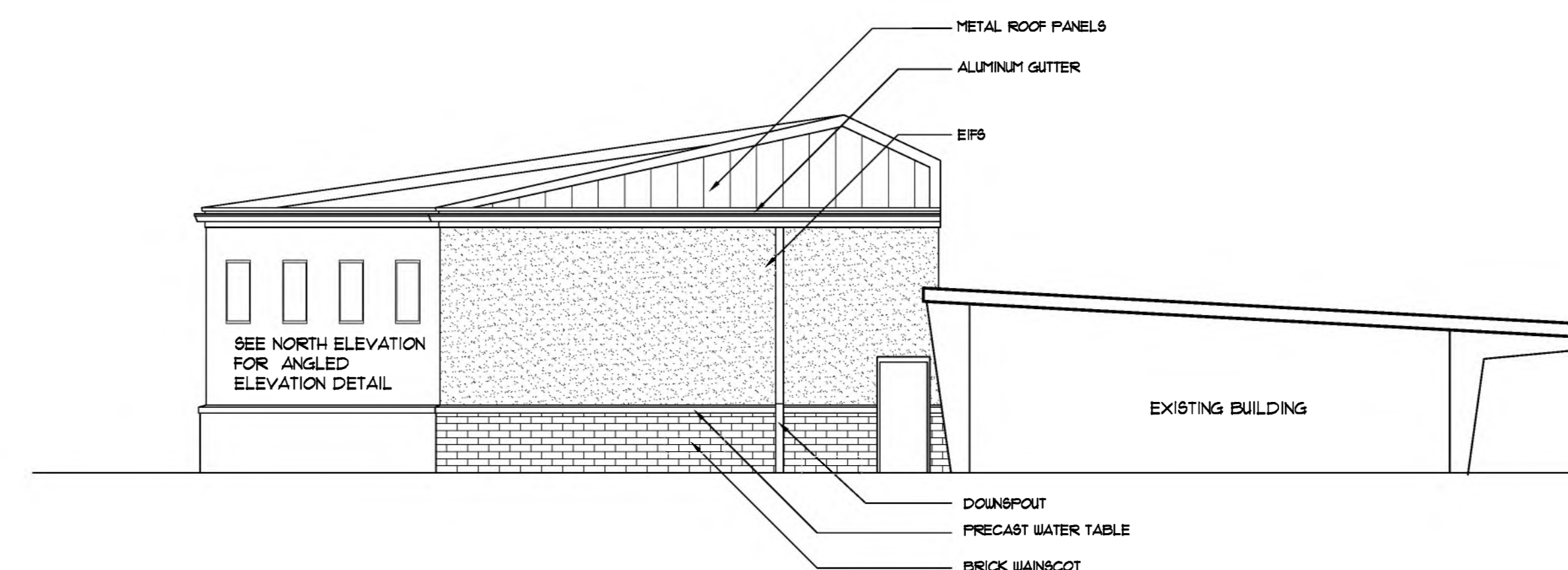
NORTH ELEVATION - BUILDING 1 - ADDITION
SCALE: 1/8" = 1'-0"



SOUTH ELEVATION - BUILDING 1 - ADDITION
SCALE: 1/8" = 1'-0"



EAST ELEVATION - BUILDING 1 - ADDITION
SCALE: 1/8" = 1'-0"



WEST ELEVATION - BUILDING 1 - ADDITION
SCALE: 1/8" = 1'-0"

REVISIONS:				
NO.	DESCRIPTION	DRAWN	CHECKED	DATE
3	ASH-03 / SD	SLB	SLB	11/01/24
3	ASH-03 / DD	SLB	SLB	11/20/24
3	ASH-03 / BID SET	SLB	SLB	12/20/24

PHASE:			
	DRAWN	CHECKED	DATE
SCHEMATIC DESIGN	ACM	ACM	03/22/21
REVISED SCHEMATIC	ACM	ACM	05/06/21
DESIGN DEVELOPMENT	ACM	ACM	07/22/21
CONSTRUCTION DOCUMENTS	ACM	ACM	11/19/21
BID DOCUMENTS	ACM	ACM	02/25/22
CONSOLIDATED DOCUMENTS	ACM	ACM	04/08/22
FDEM SUBMITTAL	ACM	ACM	10/14/22
PERMIT SET	ACM	ACM	11/17/22
BUILDING 3 PACKAGE	ACM	ACM	02/13/23

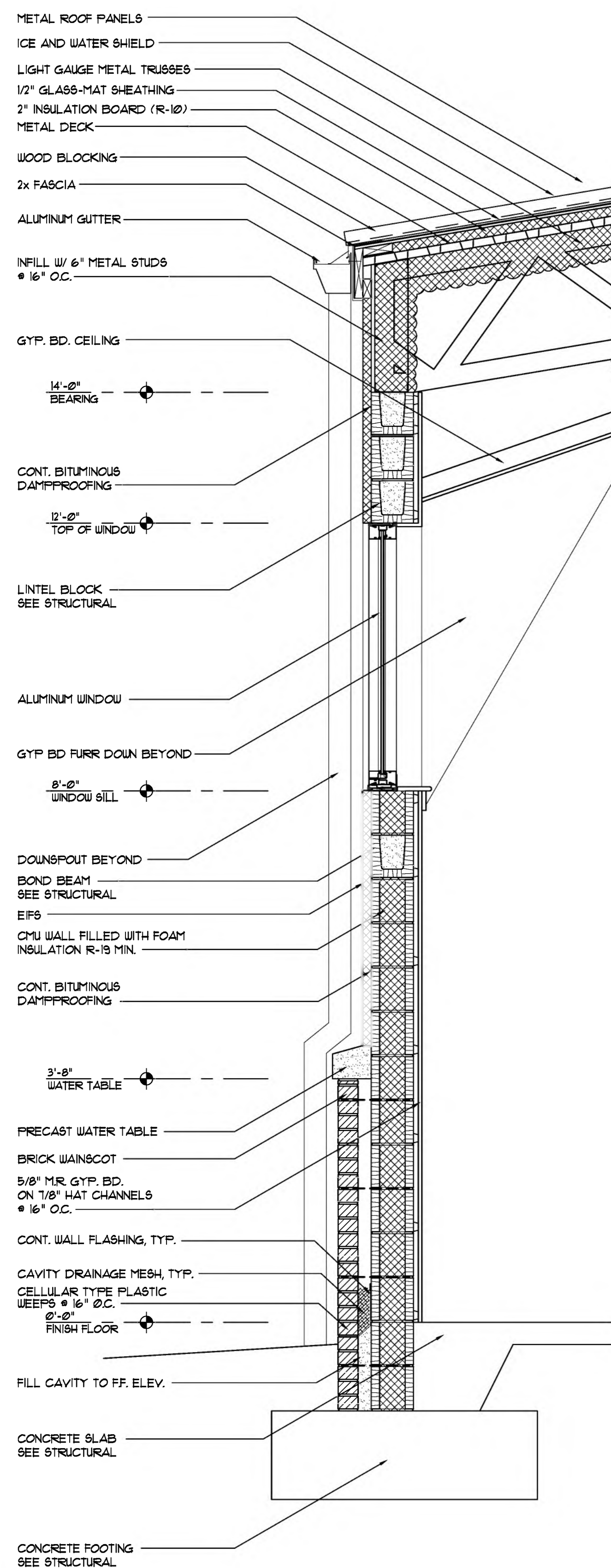
JRA ARCHITECTS 2211 THOMAS DRIVE, SUITE 100
PANAMA CITY BEACH, FL
PHONE: (850) 236-9832
Commission Number: 20793

CONSULTANTS:

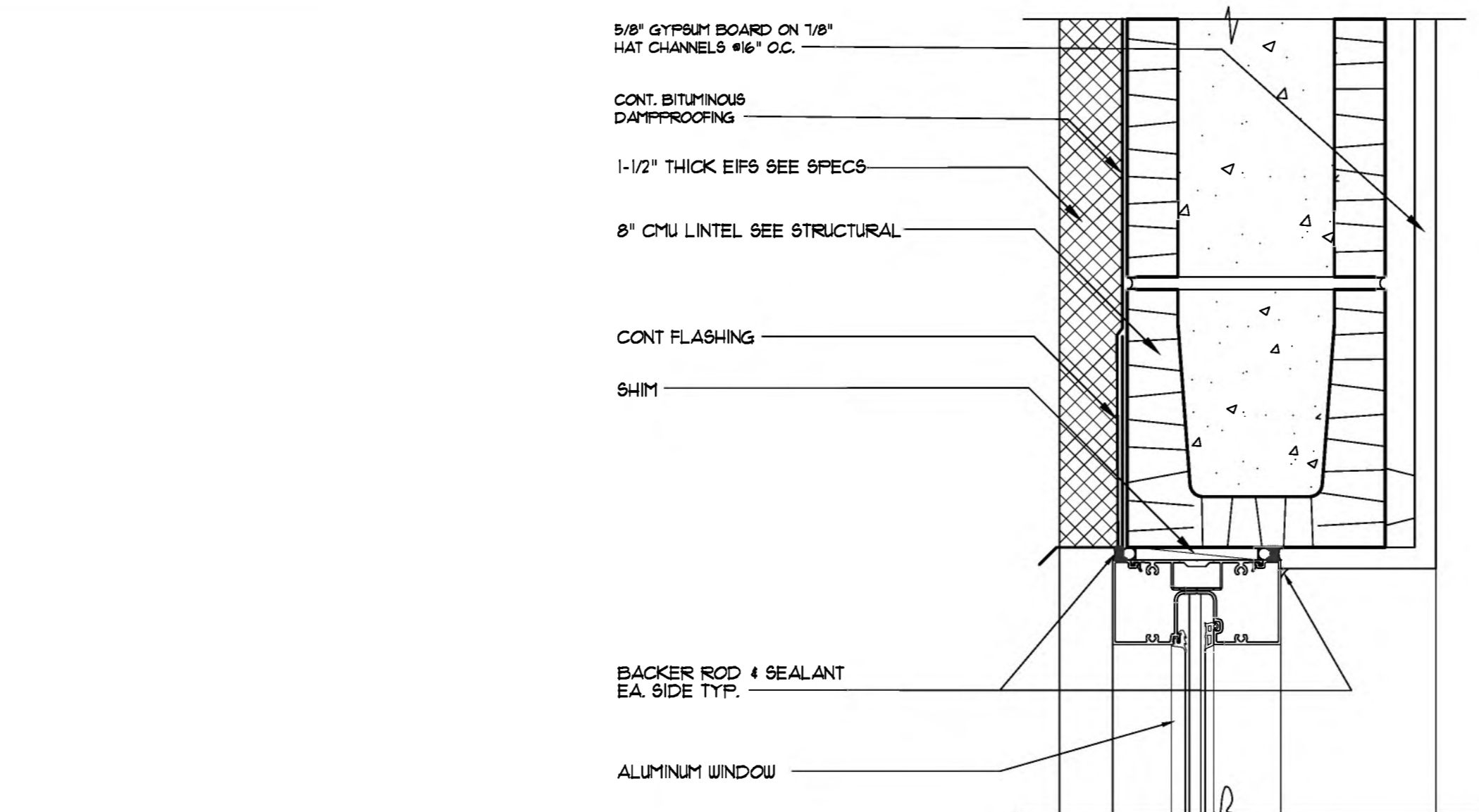
PROJECT:
**MOWAT MIDDLE SCHOOL
ADDITIONS AND
RENOVATIONS PHASE II
BAY DISTRICT SCHOOLS**
BAY COUNTY, FLORIDA

SHEET TITLE:
**BUILDING ELEVATIONS
BUILDING 1 ADDITION**

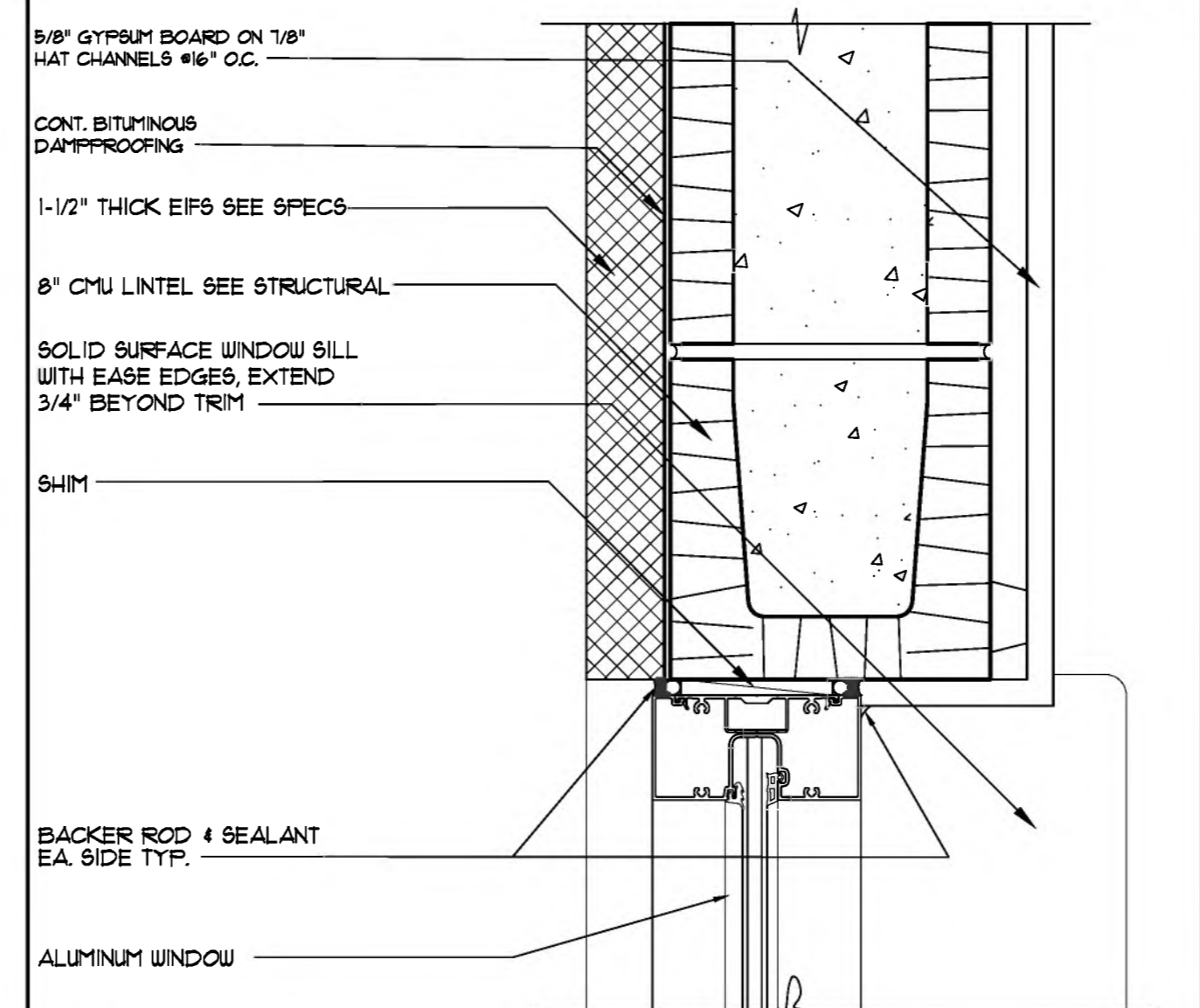
SHEET NUMBER:
A3



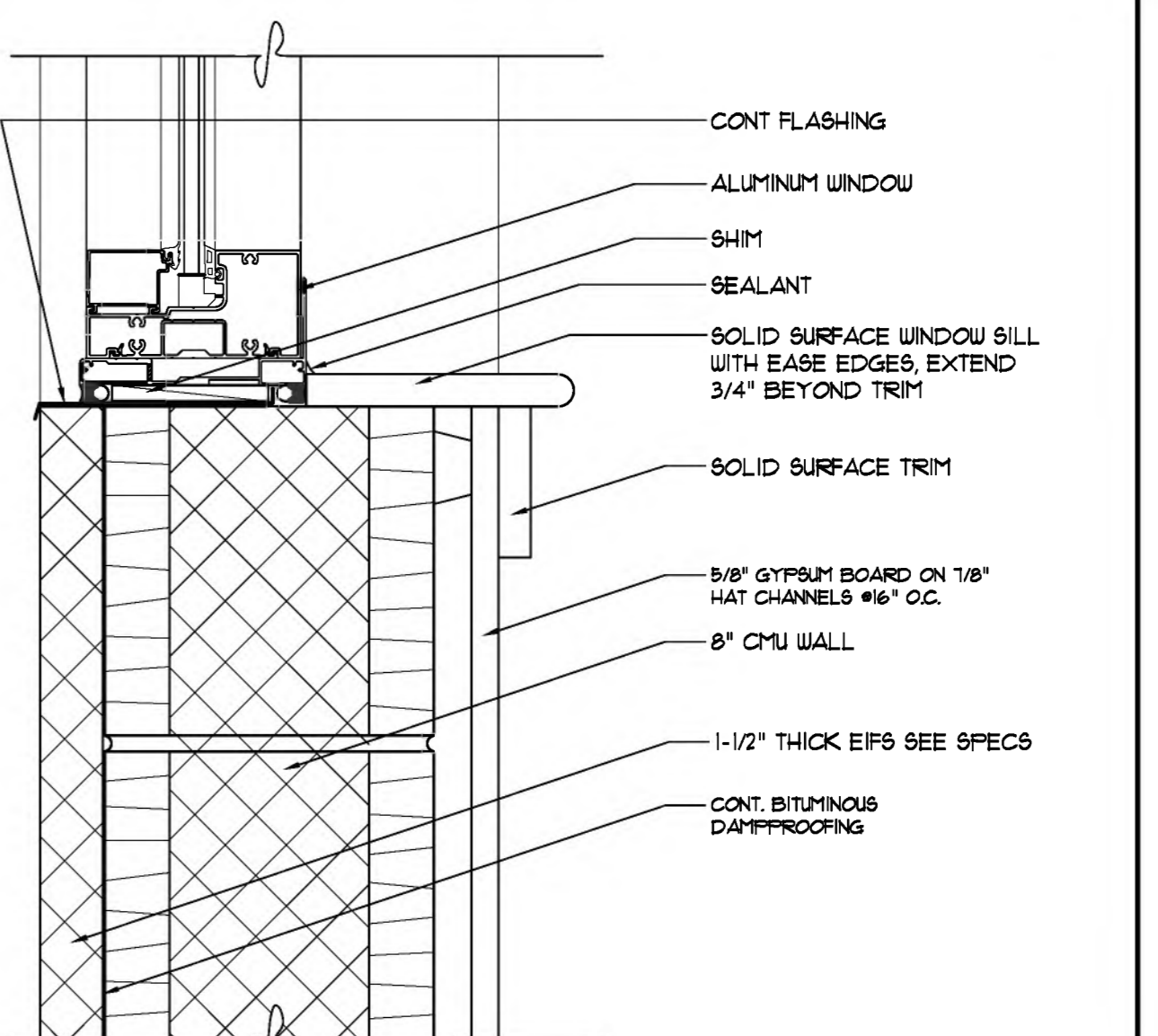
2 WALL SECTION @ CONNECTOR
SCALE: 3/4" = 1'-0"



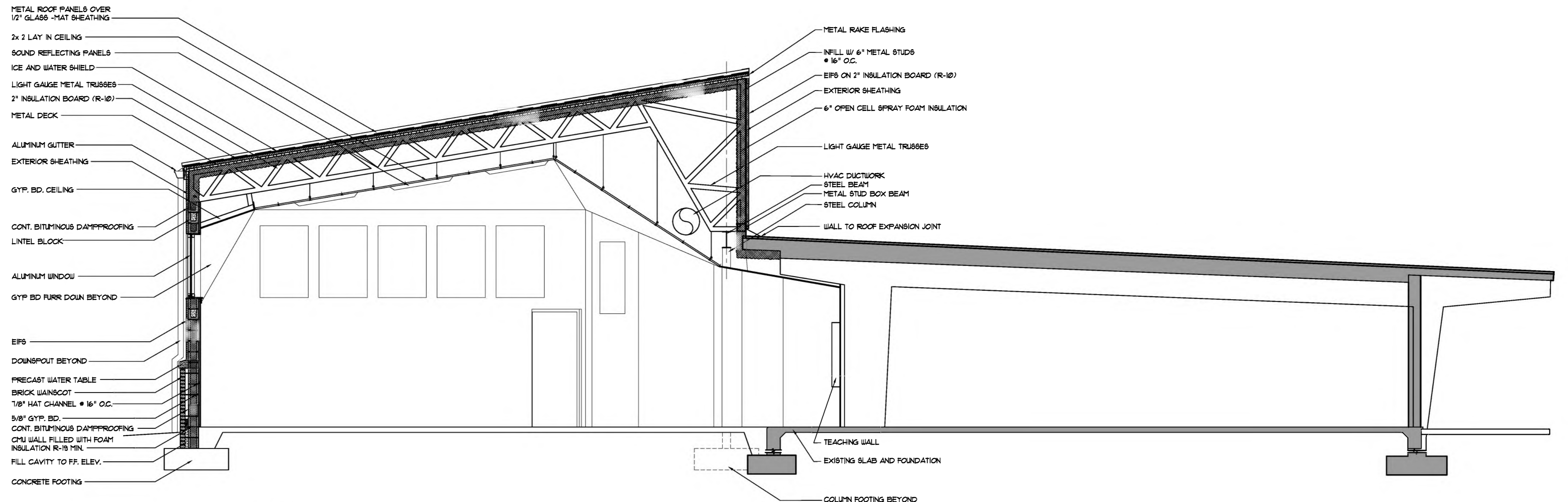
5 WINDOW HEAD DETAIL
SCALE: 3" = 1'-0"



4 WINDOW JAMB DETAIL
SCALE: 3" = 1'-0"



3 WINDOW SILL DETAIL
SCALE: 3" = 1'-0"



1 BUILDING SECTION
SCALE: 1/4" = 1'-0"

REVISIONS:

NO.	DESCRIPTION	DRAWN	CHECKED	DATE
3	ASH-03 / SD	SLB	SLB	11/01/24
3	ASH-03 / DD	SLB	SLB	11/20/24
3	ASH-03 / BID SET	SLB	SLB	12/20/24

PHASE:

NO.	DESCRIPTION	DRAWN	CHECKED	DATE
	SCHEMATIC DESIGN	ACM	ACM	03/22/21
	REVISED SCHEMATIC	ACM	ACM	05/06/21
	DESIGN DEVELOPMENT	ACM	ACM	07/22/21
	CONSTRUCTION DOCUMENTS	ACM	ACM	11/19/21
	BID DOCUMENTS	ACM	ACM	02/25/22
	CONSOLIDATED DOCUMENTS	ACM	ACM	04/08/22
	FDEM SUBMITTAL	ACM	ACM	10/14/22
	PERMIT SET	ACM	ACM	11/17/22
	BUILDING 3 PACKAGE	ACM	ACM	02/13/23

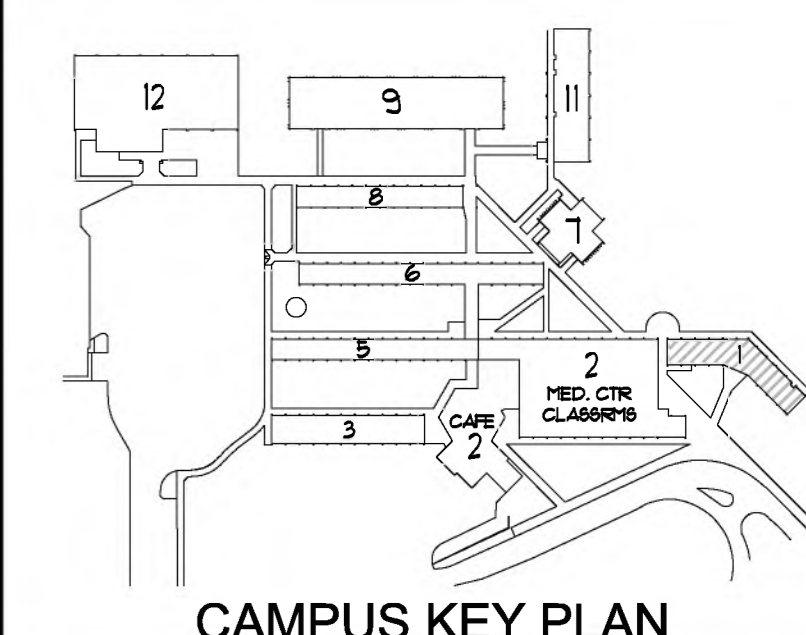
JRA ARCHITECTS 2211 THOMAS DRIVE, SUITE 100
PANAMA CITY BEACH, FL
PHONE: (850) 236-9832
Commission Number: 20783

CONSULTANTS:

PROJECT:
MOWAT MIDDLE SCHOOL ADDITIONS AND RENOVATIONS PHASE II BAY DISTRICT SCHOOLS
BAY COUNTY, FLORIDA

SHEET TITLE:
BUILDING 1 ADDITION BUILDING SECTION

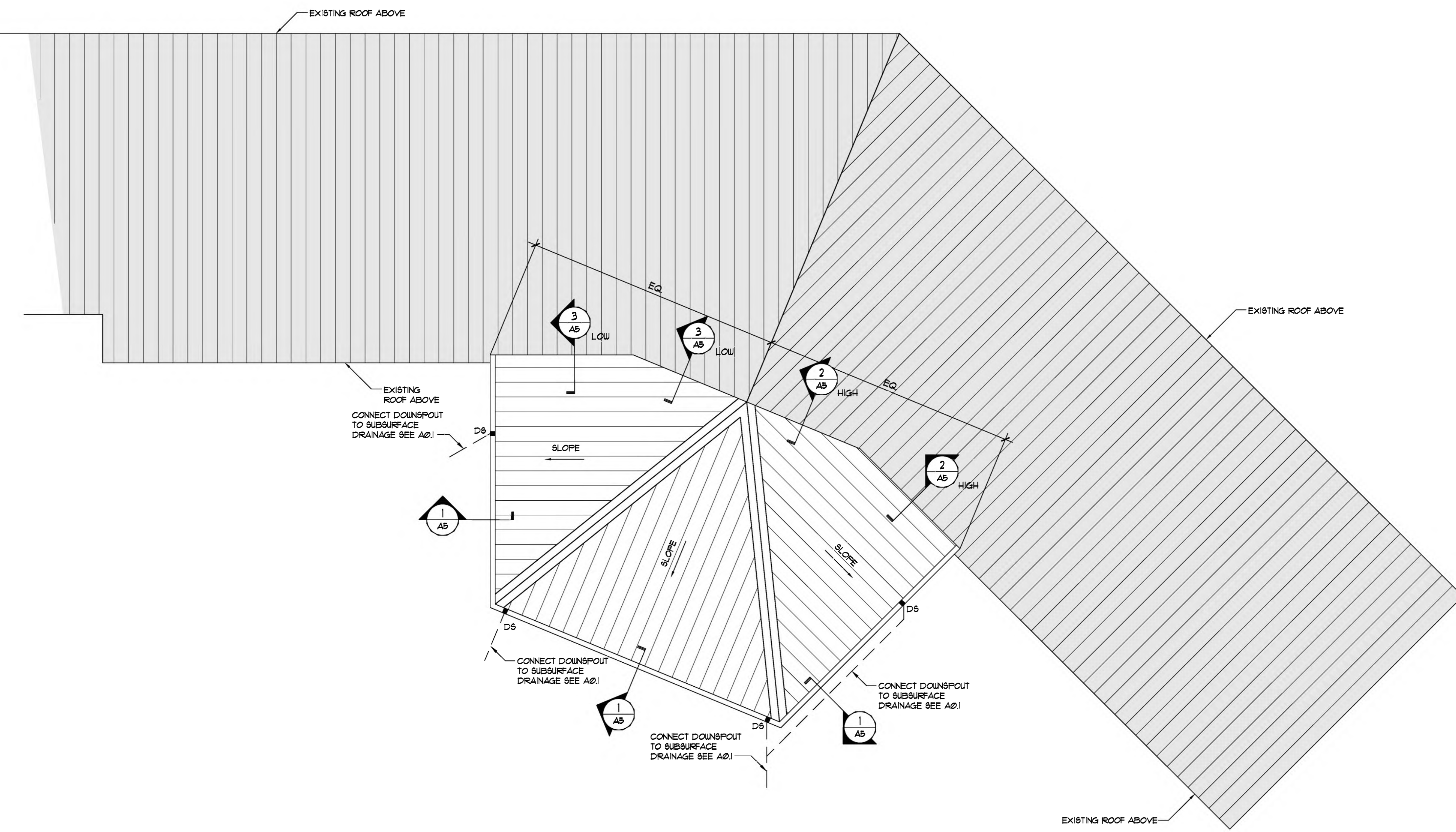
SHEET NUMBER:
A4



CAMPUS KEY PLAN

ROOF PLAN GENERAL NOTES:

1. DOWNSPOUTS TO BE A MINIMUM OF 6"x6"
2. GUTTERS TO BE MINIMUM OF 8"x8"



ROOF PLAN - BUILDING 1 - ADDITION
SCALE: 1/8" = 1'-0"

REVISIONS:				
NO.	DESCRIPTION	DRAWN	CHECKED	DATE
3	ASH-03 / SD	SLB	SLB	11/01/24
3	ASH-03 / DD	SLB	SLB	11/20/24
3	ASH-03 / BID SET	SLB	SLB	12/20/24

PHASE:			
	DRAWN	CHECKED	DATE
SCHEMATIC DESIGN	ACM	ACM	03/22/21
REVISED SCHEMATIC	ACM	ACM	05/06/21
DESIGN DEVELOPMENT	ACM	ACM	07/22/21
CONSTRUCTION DOCUMENTS	ACM	ACM	11/19/21
BID DOCUMENTS	ACM	ACM	02/25/22
CONSOLIDATED DOCUMENTS	ACM	ACM	04/08/22
FDEM SUBMITTAL	ACM	ACM	10/14/22
PERMIT SET	ACM	ACM	11/17/22
BUILDING 3 PACKAGE	ACM	ACM	02/13/23

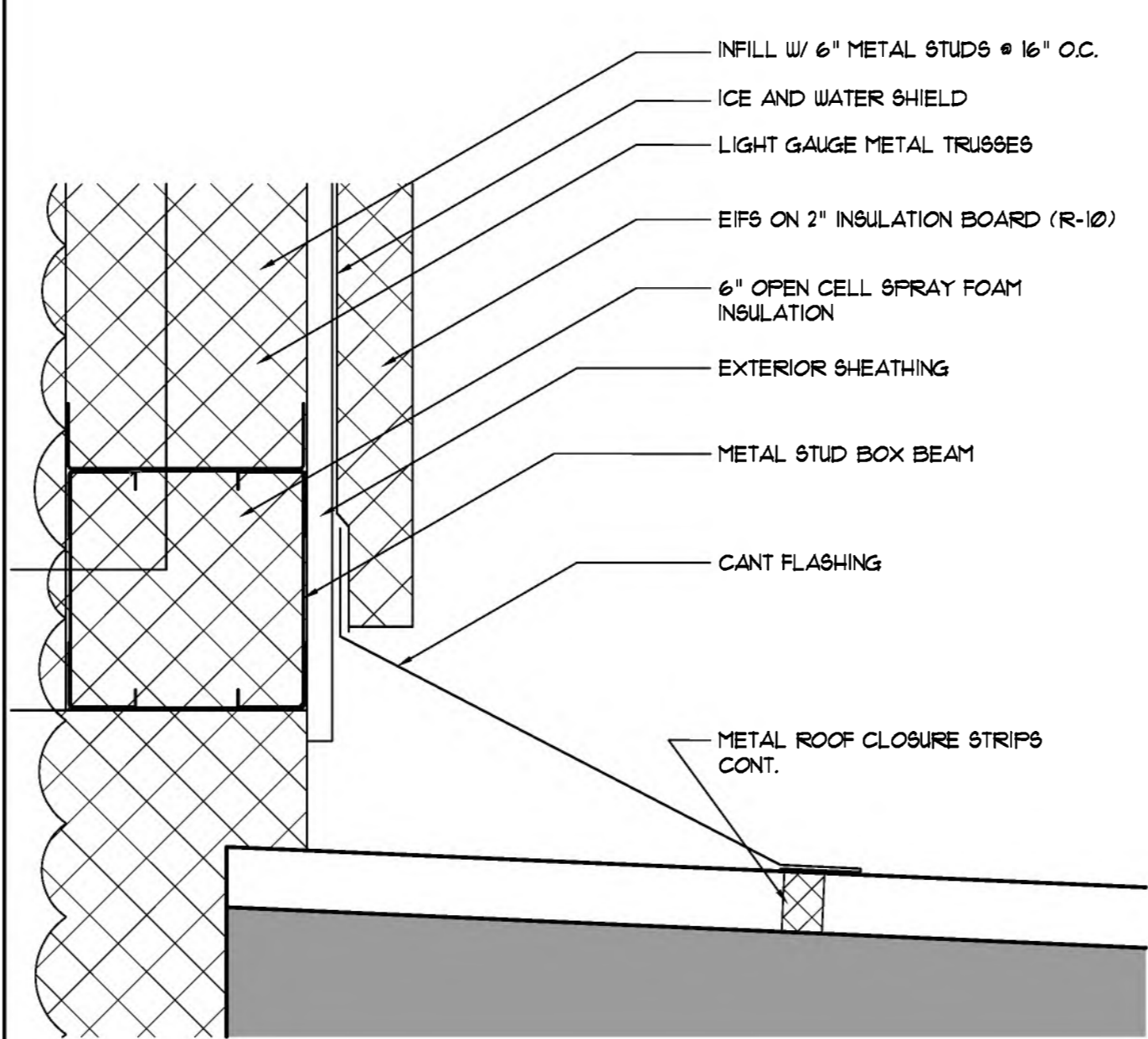
JRA ARCHITECTS 2211 THOMAS DRIVE, SUITE 100
PANAMA CITY BEACH, FL
PHONE: (850) 236-9832
Commission Number: 20793

CONSULTANTS:

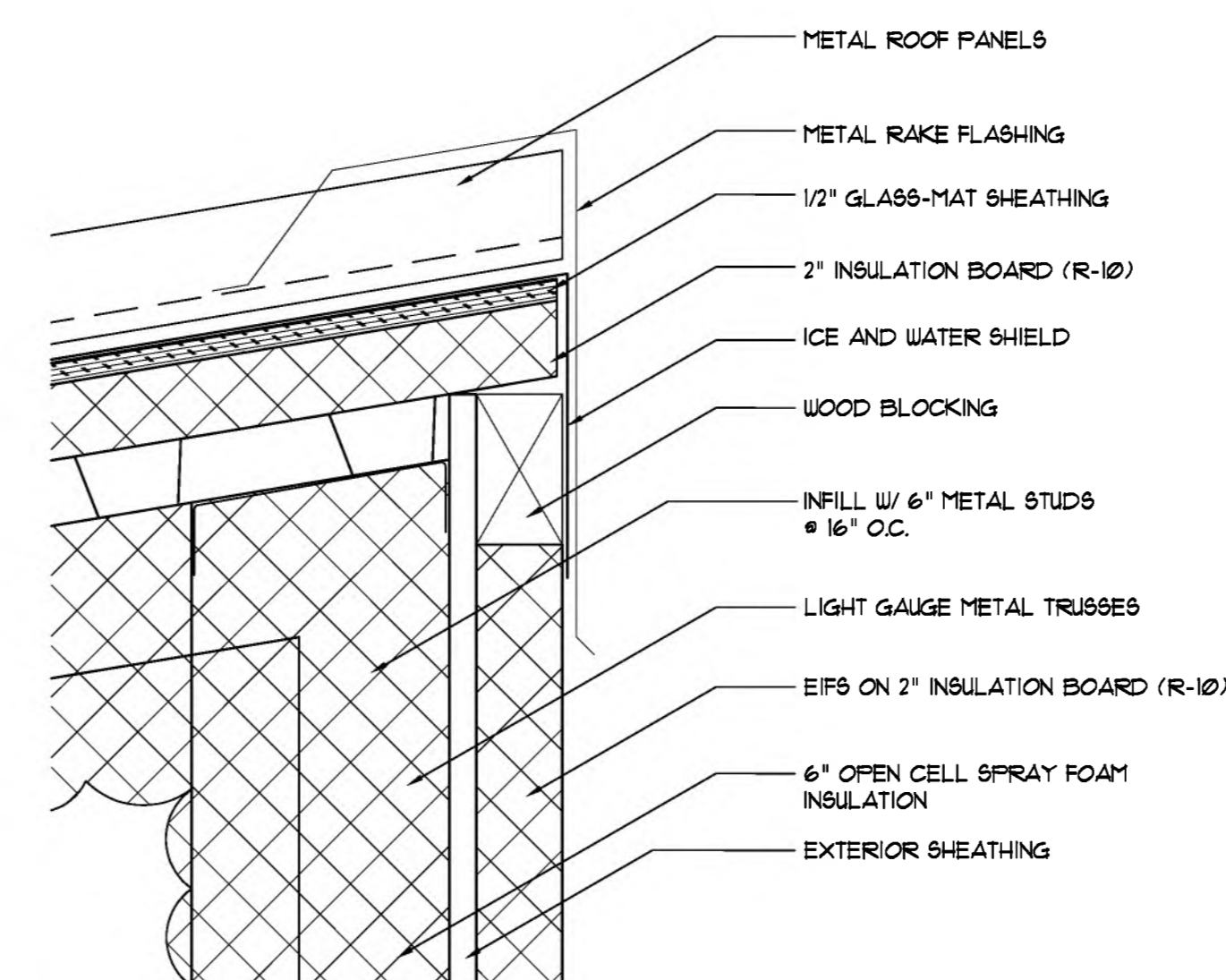
PROJECT:
**MOWAT MIDDLE SCHOOL
ADDITIONS AND
RENOVATIONS PHASE II
BAY DISTRICT SCHOOLS**
BAY COUNTY, FLORIDA

SHEET TITLE:
**ROOF PLAN
BUILDING 1 ADDITION**

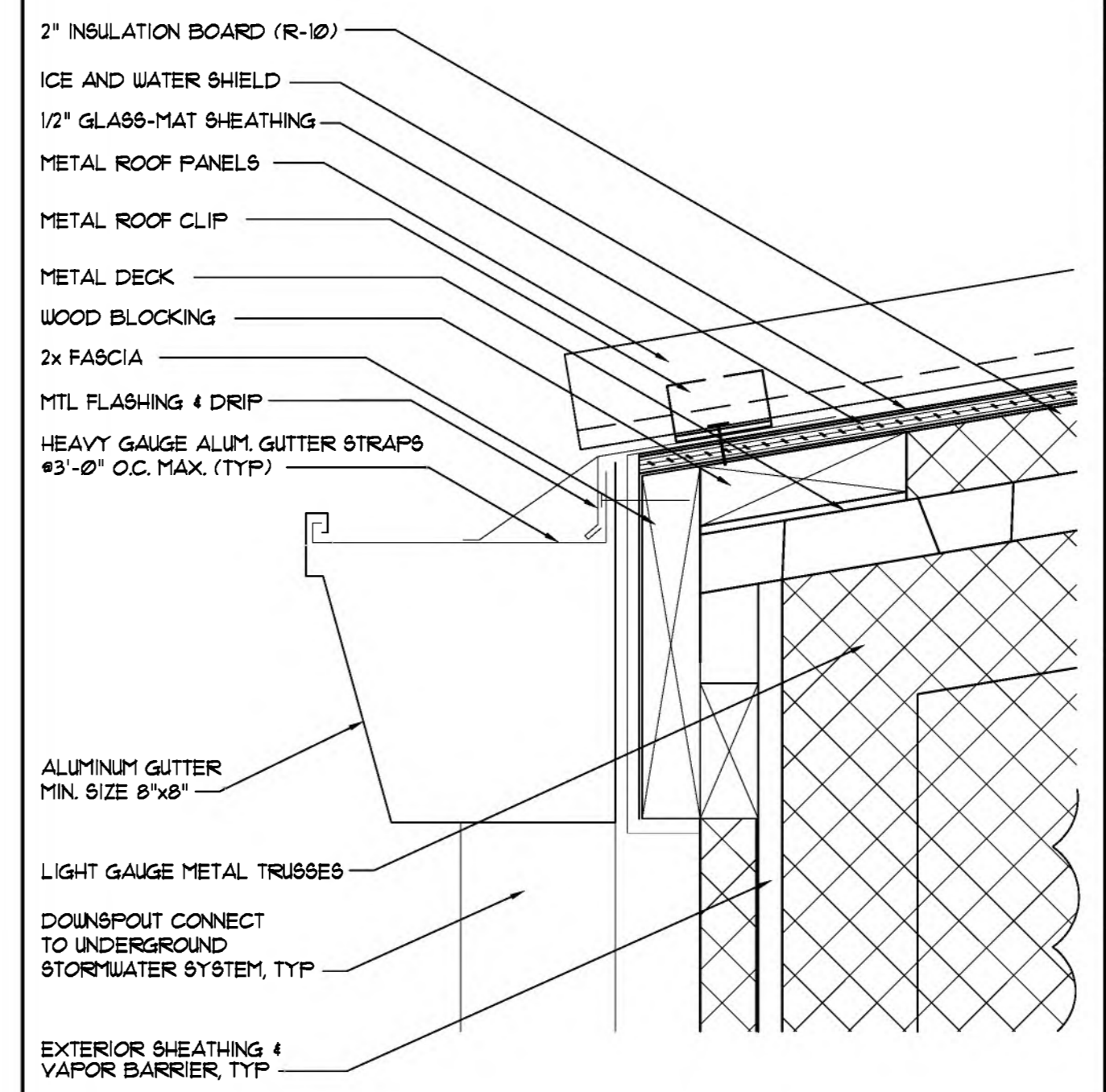
SHEET NUMBER:
A5



3 WALL TO ROOF DETAIL
SCALE: 3/4" = 1'-0"

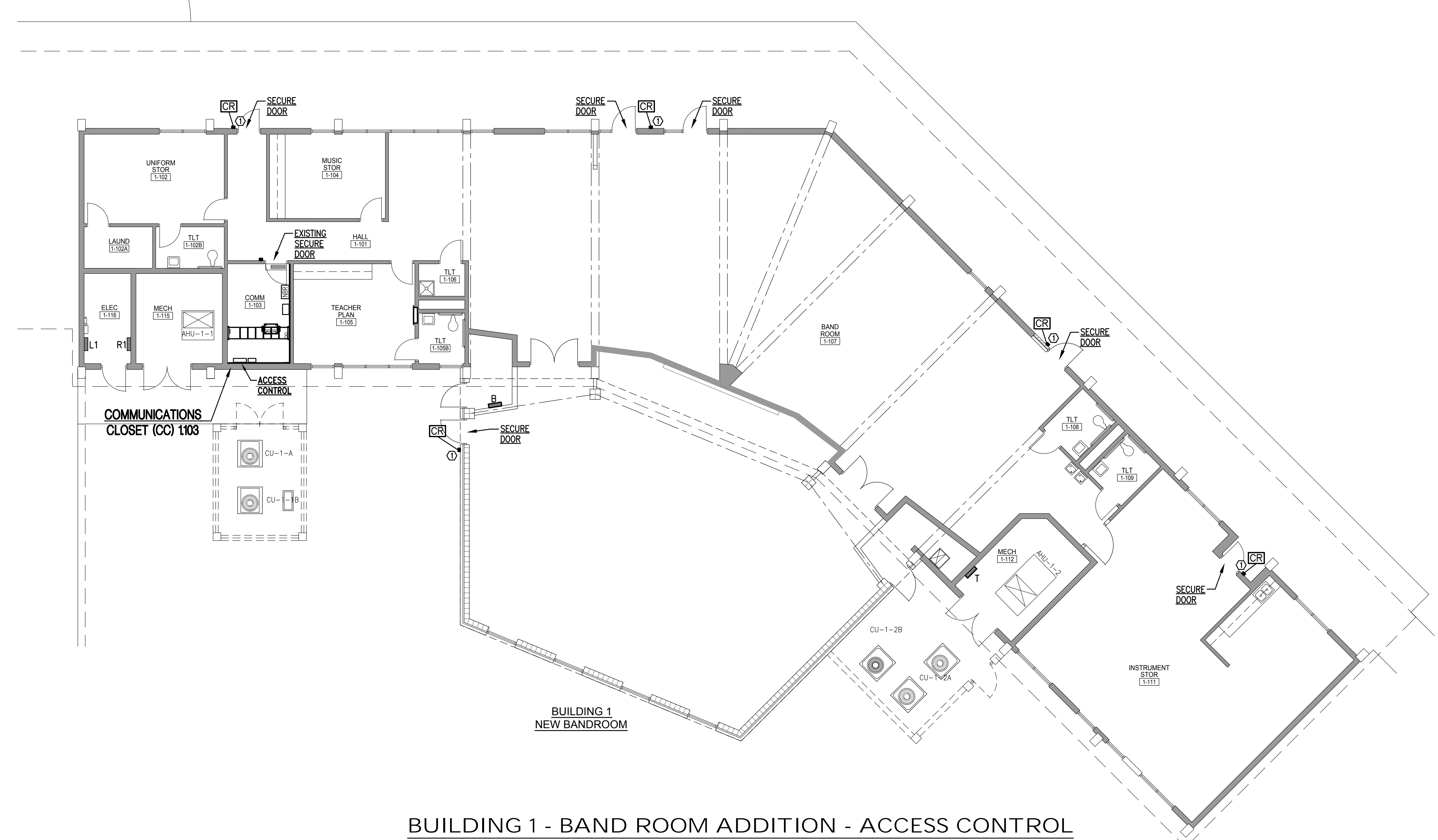
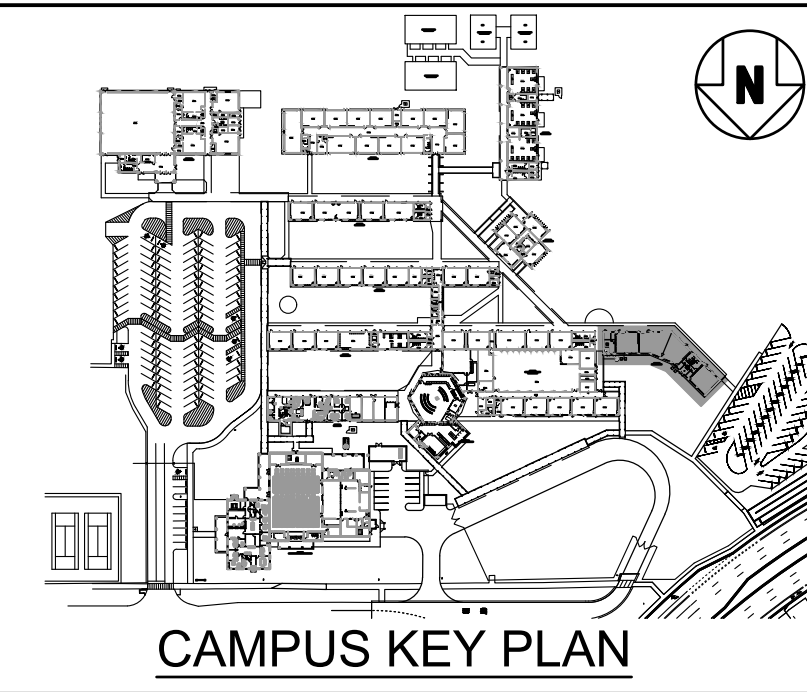


2 RAKE DETAIL
SCALE: 3/4" = 1'-0"



1 EAVE AND GUTTER DETAIL
SCALE: 3/4" = 1'-0"

NOTES:
 ① REFER TO INSTALLATION DETAIL "DOOR ROUGH-IN DETAIL-6" LOCATED ON ASC2.1 FOR INSTALLATION DETAILS.



BUILDING 1 - BAND ROOM ADDITION - ACCESS CONTROL
 1/8" = 1'-0"

REVISIONS				
NO.	DESCRIPTION	DRAWN	CHECKED	DATE
3	ASI-03 - SD	R.E.	R.E.	11/01/24
3	ASI-03 - DD	R.E.	R.E.	11/20/24
3	ASI-03 - BID SET	R.E.	R.E.	12/20/24

PHASE			
	DRAWN	CHECKED	DATE
SCHEMATIC DESIGN	R.E./S.J.	R.E.	03/22/21
REVISED SCHEMATIC	R.E./S.J.	R.E.	05/06/21
DESIGN DEVELOPMENT	R.E./S.J.	R.E.	07/22/21
CONSTRUCTION DOCUMENTS	R.E./S.J.	R.E.	11/19/21
BID DOCUMENTS	R.E./S.J.	R.E.	02/25/22
CONSOLIDATED DOCUMENTS	R.E./S.J.	R.E.	04/08/22
FDEM SUBMITTAL	R.E./S.J.	R.E.	10/14/22
PERMIT SET	R.E./S.J.	R.E.	11/17/22
BUILDING 3 PACKAGE	R.E./S.J.	R.E.	02/13/23

JRA ARCHITECTS 2211 THOMAS DR., STE 100
 PANAMA CITY BEACH, FL
 PHONE: (850) 236-9832
 Commission Number: 20793

CONSULTANTS:
HIG ENGINEERS
 HIG Engineers
 142 Egin Parkway SE
 Fort Walton Beach, Florida, 32548
 Tel: 850.243.8723
 Fax: 850.243.8723
 E: info@higengineers.com
 F: Administration No. 00006600
 Christopher A. Garcia, FL PE No. 53824
 Thomas R. Alexander, FL PE No. 73172
 Daniel J. White, FL PE No. 73790
 Caleb W. Leonard, FL PE No. 87182
 2146
 Job No.

PROJECT:
**MOWAT MIDDLE SCHOOL
 ADDITIONS AND
 RENOVATIONS PHASE II
 BAY DISTRICT SCHOOLS**
 BAY COUNTY, FLORIDA

SHEET TITLE:
**BUILDING 1 - BAND ROOM
 ADDITION - ACCESS
 CONTROL**

SHEET NUMBER:
AC1.0

RENGLE 2024-04-15 ACT: BUILDING 1 - BAND ROOM ADDITION - ACCESS CONTROL.dwg