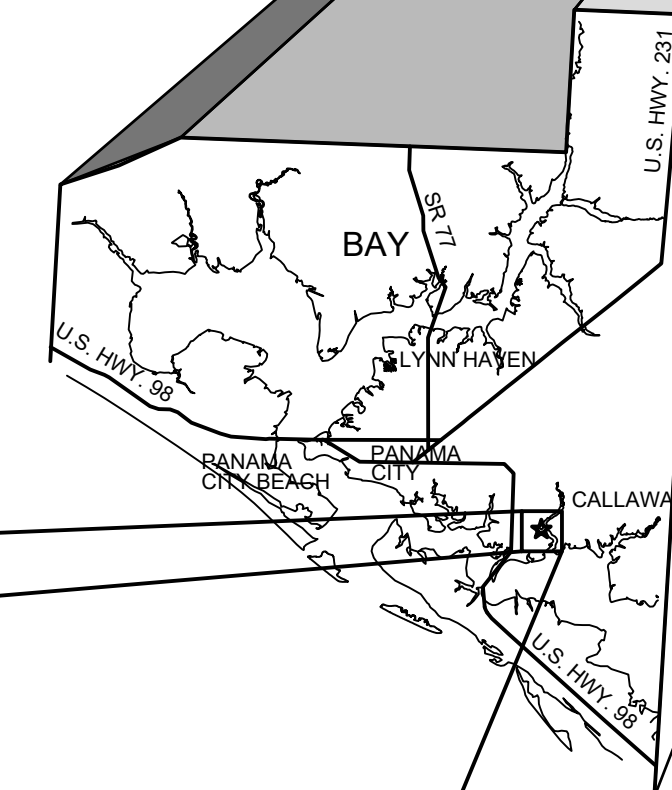
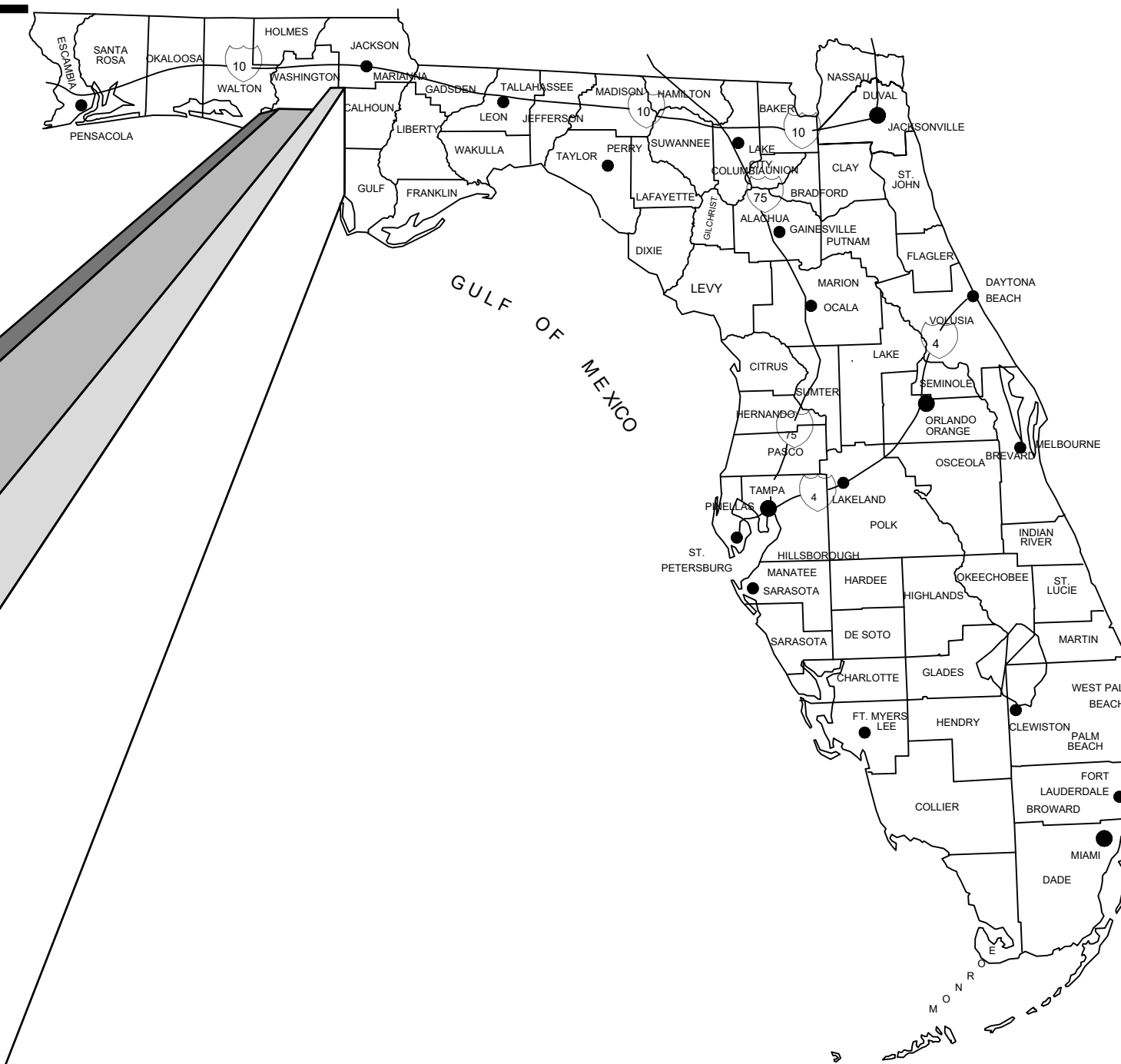


CALLAWAY COMMUNITY CENTER

CITY OF CALLAWAY, FL



PREPARED FOR:
CITY OF CALLAWAY



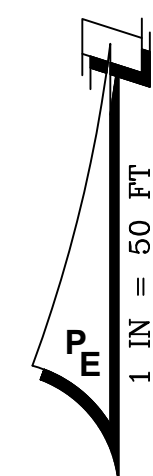
ADDRESS
6601 EAST HIGHWAY 22
CALLAWAY, FLORIDA 32404

PHONE: (850) 871-6000

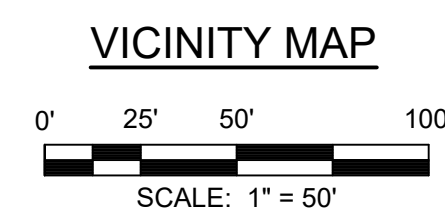
CITY OF CALLAWAY OF CITY OFFICIALS:

MS. PAMN HENDERSON, MAYOR
MR. SCOTT DAVIS, WARD I COMMISSIONER
MR. DAVID GRIGGS, WARD II COMMISSIONER
MR. BOB PELLETIER, WARD III COMMISSIONER
MR. KENNETH L. AYERS, JR., WARD IV COMMISSIONER

MR. KEITH "EDDIE" COOK, CITY MANAGER
MR. BILL FRYE, PUBLIC WORKS DIRECTOR
MR. TIM LEGARE, LEISURE SERVICES DIRECTOR



ADDRESS: 432 BEULAH AVE ~ (S17-T4S-R13W)
LAT ~ 30° 08' 13"
LONG ~ 85° 34' 14"



RELEASED FOR BIDDING
PURPOSES ONLY ~ NOT
RELEASED FOR CONSTRUCTION

DECEMBER 2024
PROJECT No. 26043

DRAWING INDEX

- | No. - | TITLE |
|-------|--|
| 0 - | COVER SHEET |
| 1 - | OVERALL EXISTING CONDITIONS AND DEMOLITION ~ PLAN VIEW |
| 2 - | ELECTRICAL DEMOLITION PLAN |
| 3 - | HVAC DEMOLITION PLAN |
| 4 - | PLUMBING DEMOLITION PLAN |
| 5 - | EXISTING AND DEMO. ELEVATION PLAN ~ SOUTH AND EAST VIEWS |
| 6 - | EXISTING AND DEMO. ELEVATION PLAN ~ NORTH AND WEST VIEWS |
| 7 - | PROPOSED FLOOR PLAN |
| 8 - | PROPOSED ELEVATION PLAN ~ SOUTH AND EAST VIEWS |
| 9 - | PROPOSED ELEVATION PLAN ~ NORTH AND WEST VIEWS |
| 10 - | PROPOSED ELECTRICAL PLAN |
| 11 - | PROPOSED PLUMBING, HVAC, AND RESTROOM PLANS |
| 12 - | PROPOSED REFLECTIVE CEILING PLAN |
| 13 - | RESTROOM DETAILS |
| 14 - | CONSTRUCTION DETAILS |

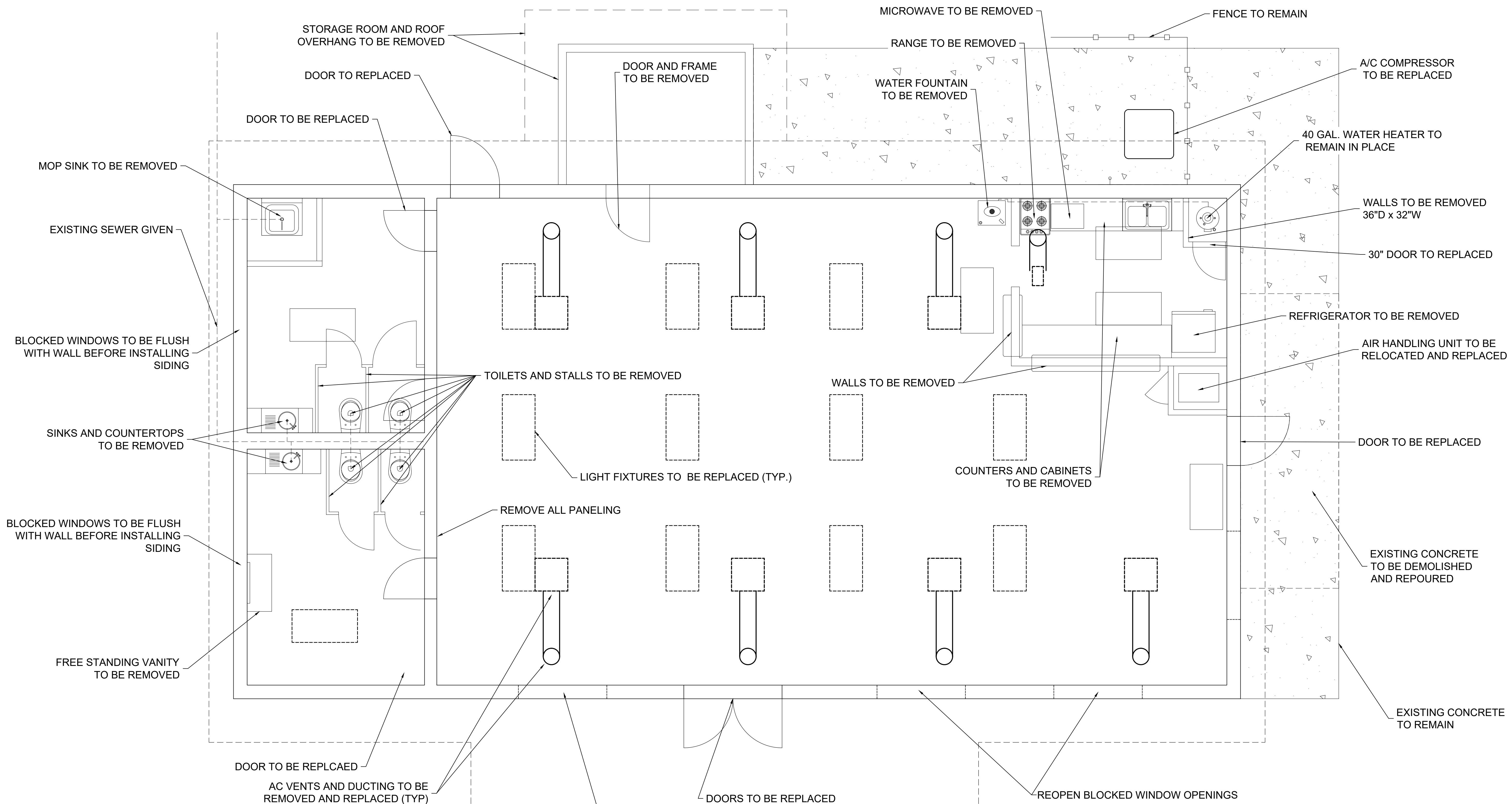
PREPARED BY:



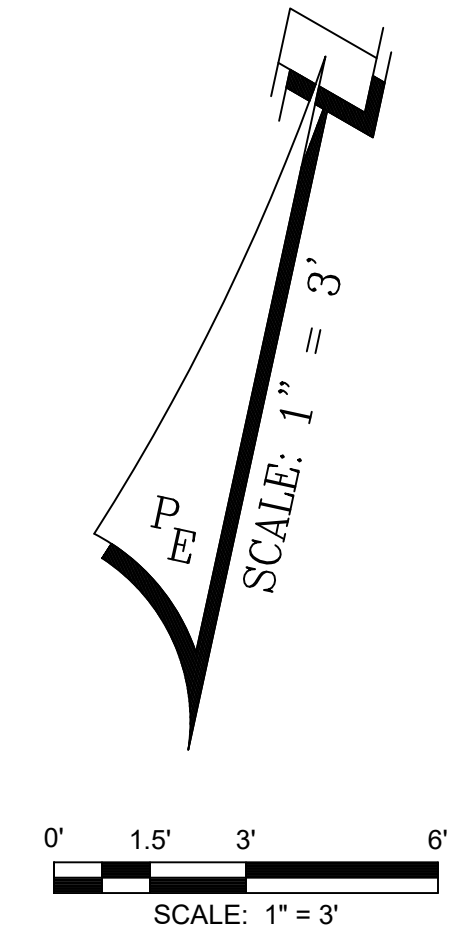
ENVIRONMENTAL ENGINEERS • CIVIL ENGINEERS • LAND PLANNERS
600 Ohio Avenue Lynn Haven, Florida 32444
(850)763-5200 www.panhandleengineering.com

Always call 811 two full business days before you dig
to have underground utilities located and marked.





- NOTES:**
- EXISTING TILE FLOORING TO REMAIN IN PLACE AND NEW TILE PLACED ON TOP.
 - DROP CEILING IS LOCATED 10 1/2" BELOW ORIGINAL EXISTING CEILING IN MAIN ROOM, WITHOUT ACCESS TO ATTIC/ CRAWL SPACE. UNABLE TO DETERMINE FULL DESIGN OF HVAC DUCTING ABOVE ORIGINAL EXISTING CEILING.
 - DROP CEILING IS LOCATED 17" BELOW ORIGINAL EXISTING CEILING IN RESTROOMS. WITHOUT ACCESS TO ATTIC/ CRAWL SPACE. UNABLE TO DETERMINE FULL DESIGN OF HVAC DUCTING ABOVE ORIGINAL EXISTING CEILING.
 - REMOVE ALL EXISTING DROP CEILINGS. THERE ARE TWO (2).



REV	DATE	BY	REVISIONS

SCALE: AS NOTED
DESIGNED BY: CBF
DRAWN BY: CBG
REVIEWED BY: CBF
ISSUE DATE: DECEMBER 2024
ACAD FILE NAME: 26043_E1.dwg

PANHANDLE ENGINEERING
 ENVIRONMENTAL ENGINEERS • CIVIL ENGINEERS • LAND PLANNERS
 600 Ohio Avenue Lynn Haven, Florida 32444
 (850)763-5200 www.panhandleengineering.com

**OVERALL EXISTING CONDITIONS AND DEMOLITION ~ PLAN VIEW
 CALLAWAY COMMUNITY CENTER
 CITY OF CALLAWAY, FL**

James H. Slonina, P.E. 39197
 Christopher B. Forehand, P.E. 58028
 J. Doug Crook, P.E. 66556
 Watt Z. Lewis, P.E. 84238
 William B. Thompson, P.E. 95046

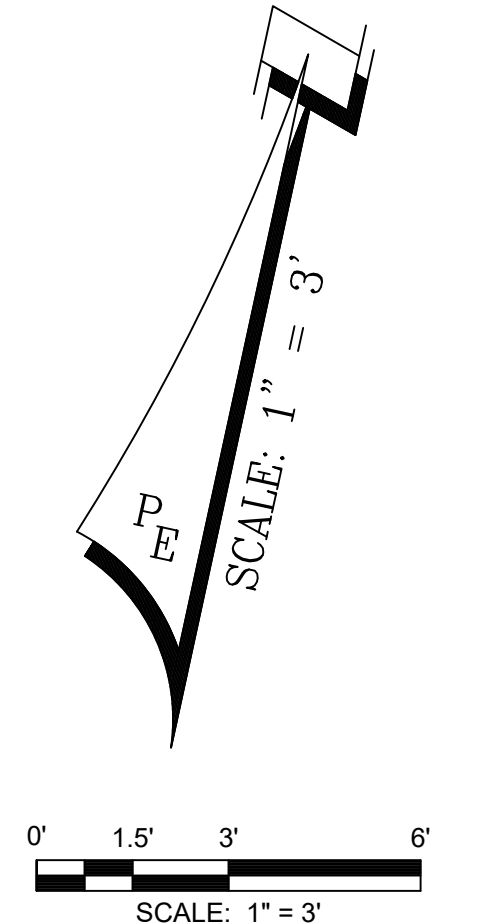
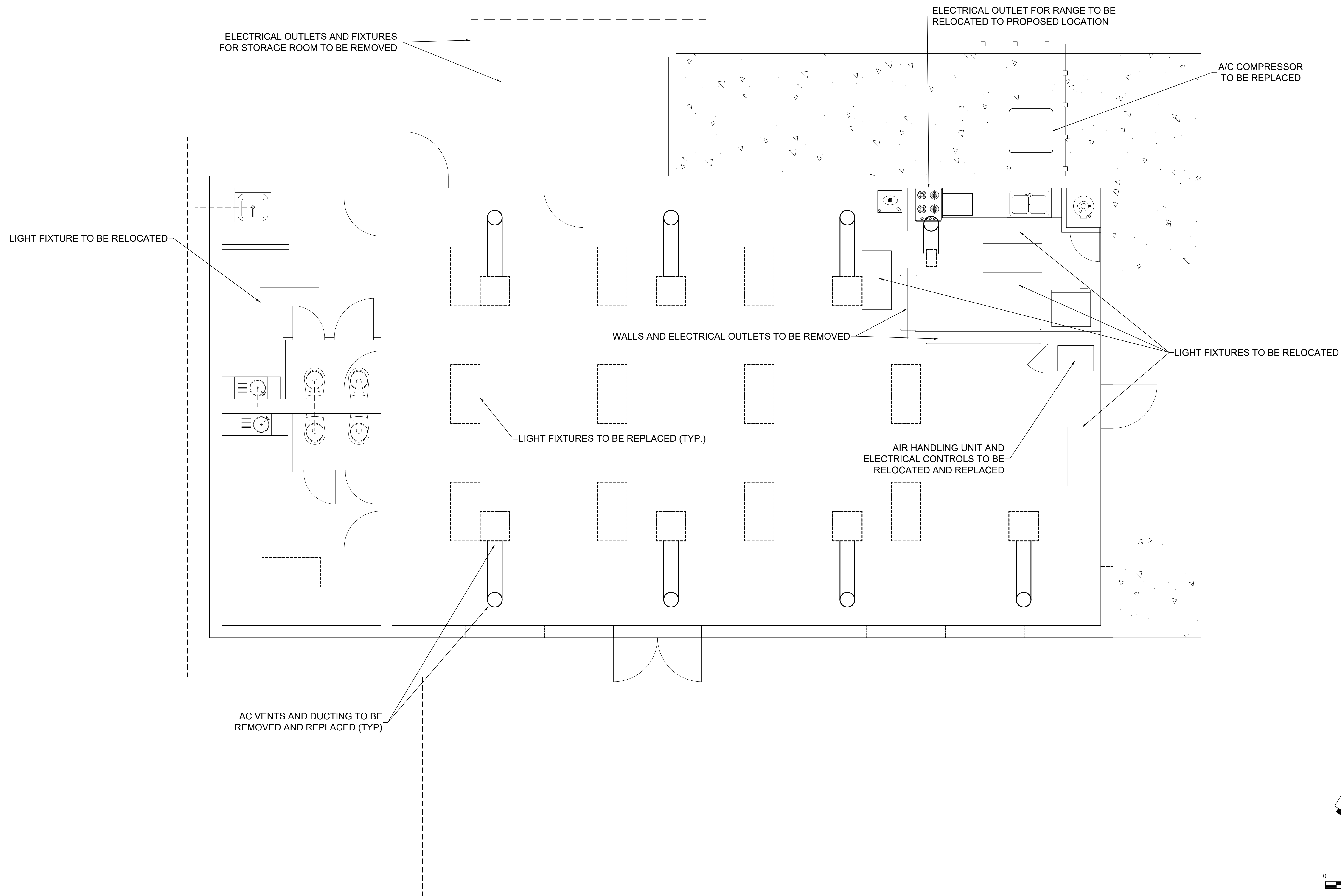
9-Dec-24

DPR CERTIFICATION #EB-7806

SHEET NUMBER	1
PROJECT NUMBER	26043

Date: 12/20/2024 2:17 PM File: P:\26043 Callaway Blg Improvements\1_Civil\3D\Fabrication\26043_E1.dwg

26043 CALLAWAY COMMUNITY CENTER OVERALL EXISTING CONDITIONS AND DEMOLITION ~ PLAN VIEW Sheet 1



Date: 12/09/2024 2:17 PM File: P:\26043_Callaway\26043_Electrical\Drawings\26043_E1.dwg

REV	DATE	BY	REVISIONS

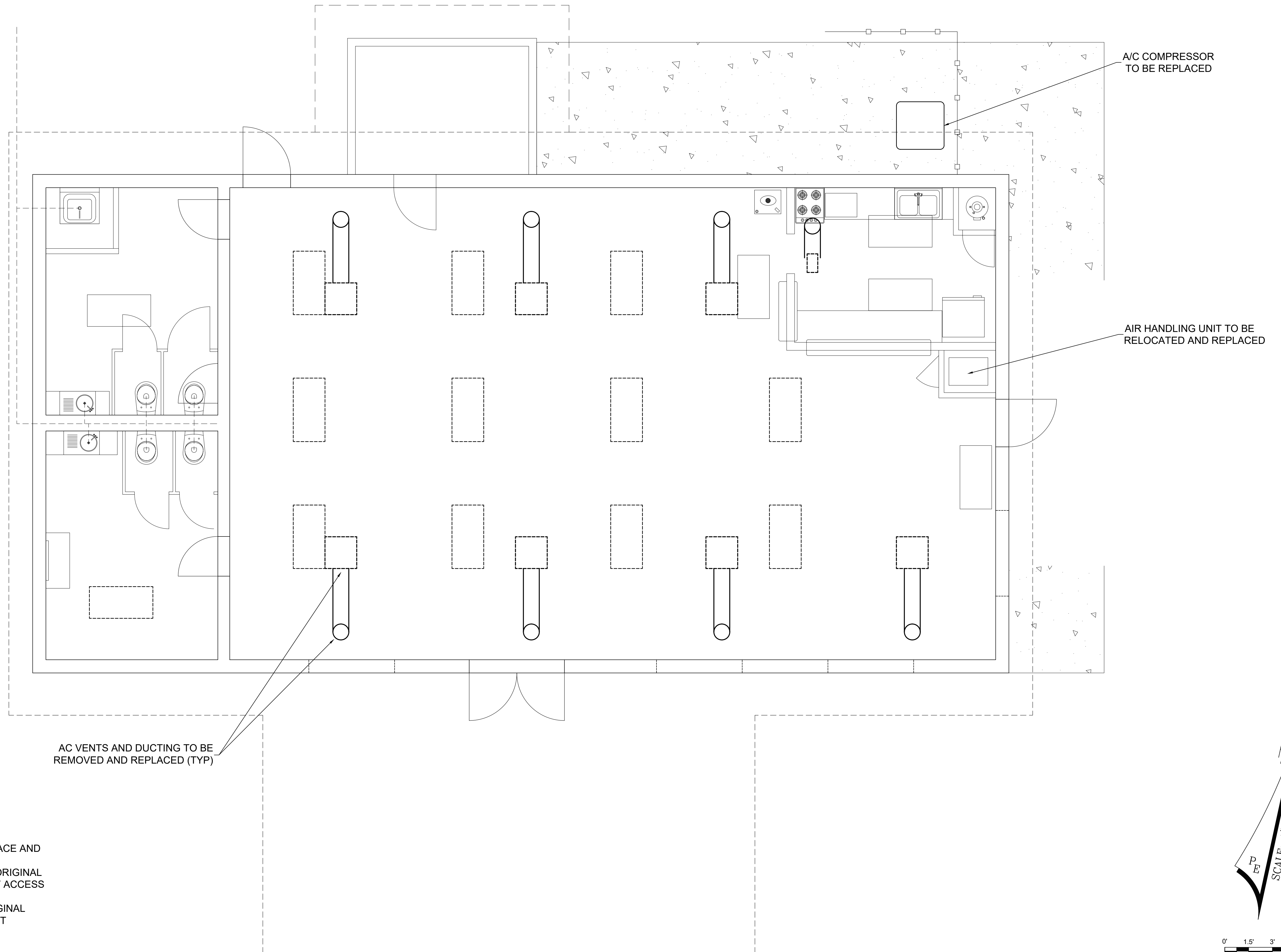
SCALE: AS NOTED
DESIGNED BY: CBF
DRAWN BY: CBG
REVIEWED BY: CBF
ISSUE DATE: DECEMBER 2024
ACAD FILE NAME: 26043_E1.dwg


PANHANDLE ENGINEERING
 ENVIRONMENTAL ENGINEERS • CIVIL ENGINEERS • LAND PLANNERS
 600 Ohio Avenue Lynn Haven, Florida 32444
 (850)763-5200 www.panhandleengineering.com

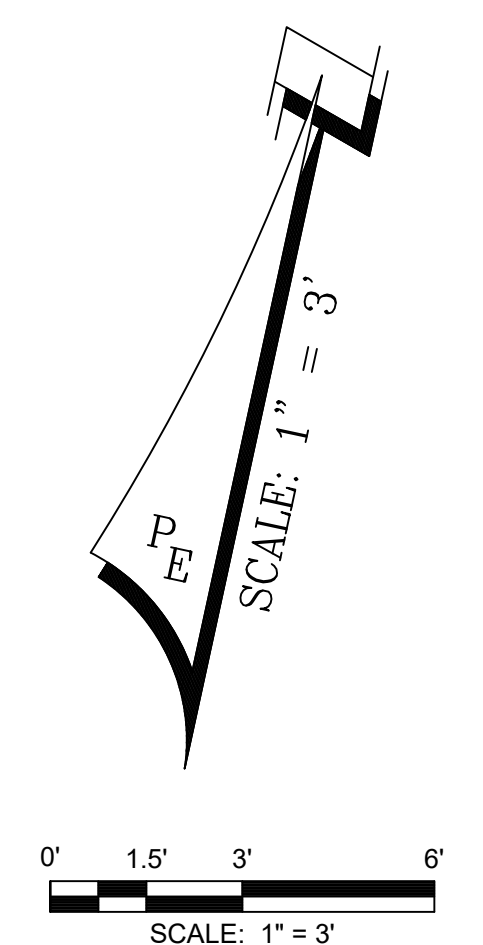
ELECTRICAL DEMOLITION PLAN
CALLAWAY COMMUNITY CENTER
 CITY OF CALLAWAY, FL

James H. Slonina, P.E. 39197
 Christopher B. Forehand, P.E. 58028
 J. Doug Crook, P.E. 66556
 Watt Z. Lewis, P.E. 84238
 William B. Thompson, P.E. 95046
 9-Dec-24
 DPR CERTIFICATION #EB-7806

SHEET NUMBER	2
PROJECT NUMBER	26043



- NOTES:**
1. EXISTING TILE FLOORING TO REMAIN IN PLACE AND NEW TILE PLACED ON TOP.
 2. DROP CEILING IS LOCATED 10 1/2" BELOW ORIGINAL EXISTING CEILING IN MAIN ROOM, WITHOUT ACCESS TO ATTIC/ CRAWL SPACE.
 3. DROP CEILING IS LOCATED 17" BELOW ORIGINAL EXISTING CEILING IN RESTROOMS, WITHOUT ACCESS TO ATTIC/ CRAWL SPACE.
 4. REMOVE ALL EXISTING HVAC DUCT WORK.



Date: 12/9/2024 2:17 PM File: P:\26043 Callaway Blg Improvements\1_Civil\3D\Fabric\Drawings\2_DESIGN\26043_E1.dwg

REV	DATE	BY	REVISIONS

SCALE: AS NOTED
DESIGNED BY: CBF
DRAWN BY: CBG
REVIEWED BY: CBF
ISSUE DATE: DECEMBER 2024
ACAD FILE NAME: 26043_E1.dwg

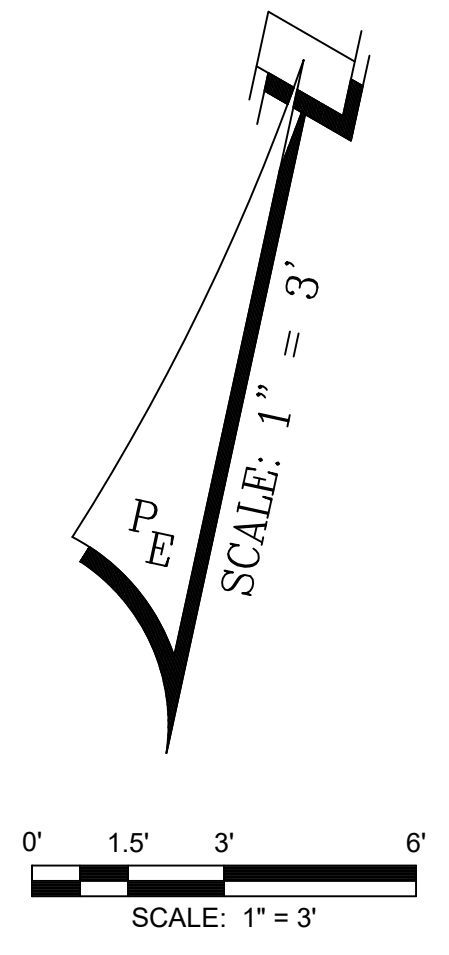
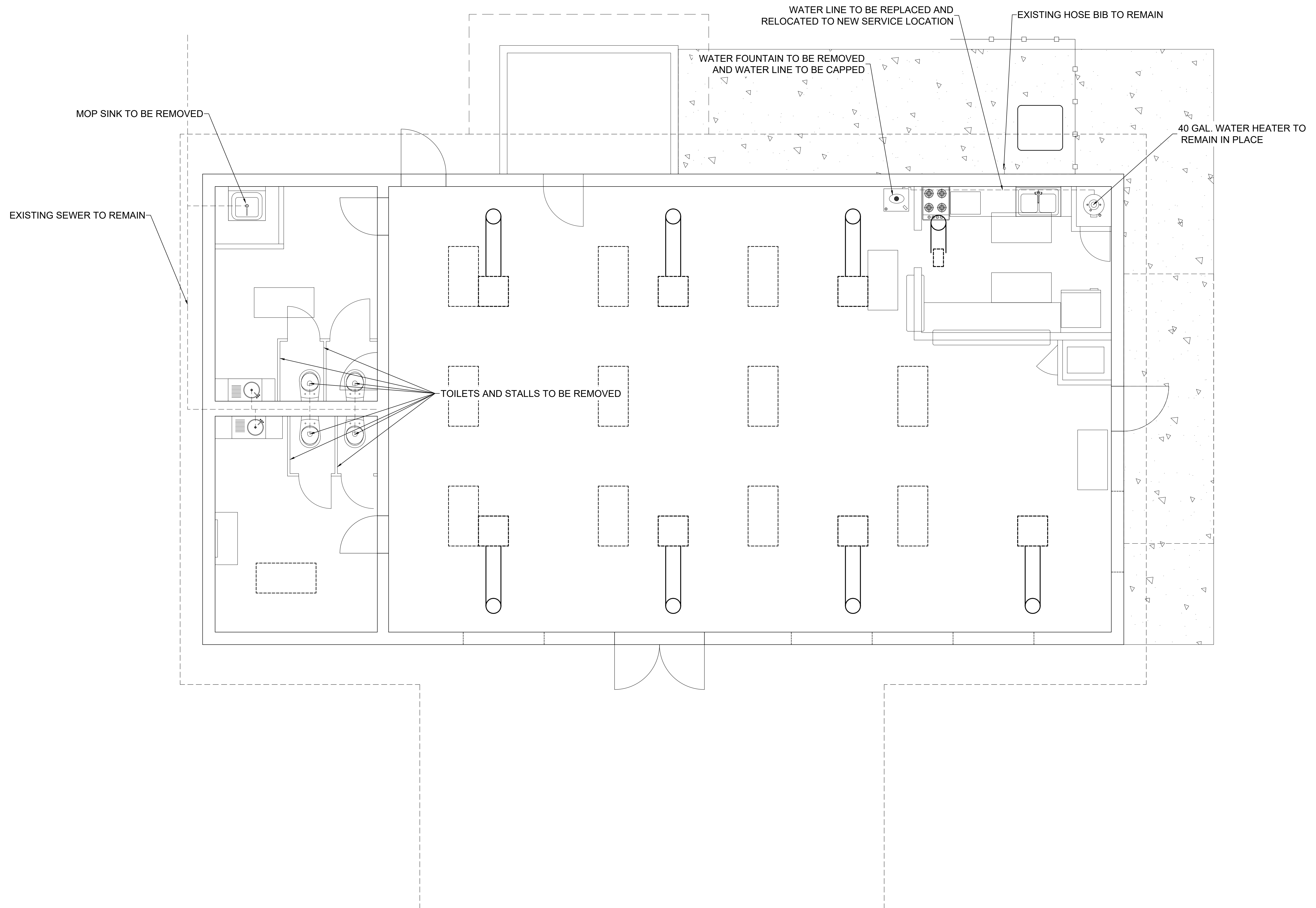

PANHANDLE ENGINEERING
 ENVIRONMENTAL ENGINEERS • CIVIL ENGINEERS • LAND PLANNERS
 600 Ohio Avenue Lynn Haven, Florida 32444
 (850)763-5200 www.panhandleengineering.com

HVAC DEMOLITION PLAN
CALLAWAY COMMUNITY CENTER
 CITY OF CALLAWAY, FL

James H. Slonina, P.E. 39197
 Christopher B. Forehand, P.E. 58028
 J. Doug Crook, P.E. 66556
 Watt Z. Lewis, P.E. 84236
 William B. Thompson, P.E. 95046
 9-Dec-24
 DPR CERTIFICATION #EB-7806

SHEET NUMBER	3
PROJECT NUMBER	26043

26043 CALLAWAY COMMUNITY CENTER HVAC DEMOLITION PLAN Sheet 3



Date: 12/09/2024 2:17 PM File: P:\26043 Callaway Blg Improvement\1_Civil\3D\Fabric\Drawings\26043_E1.dwg

REV	DATE	BY	REVISIONS

SCALE: AS NOTED
DESIGNED BY: CBF
DRAWN BY: CBG
REVIEWED BY: CBF
ISSUE DATE: DECEMBER 2024
ACAD FILE NAME: 26043_E1.dwg

PANHANDLE ENGINEERING
 ENVIRONMENTAL ENGINEERS • CIVIL ENGINEERS • LAND PLANNERS
 600 Ohio Avenue Lynn Haven, Florida 32444
 (850)763-5200 www.panhandleengineering.com

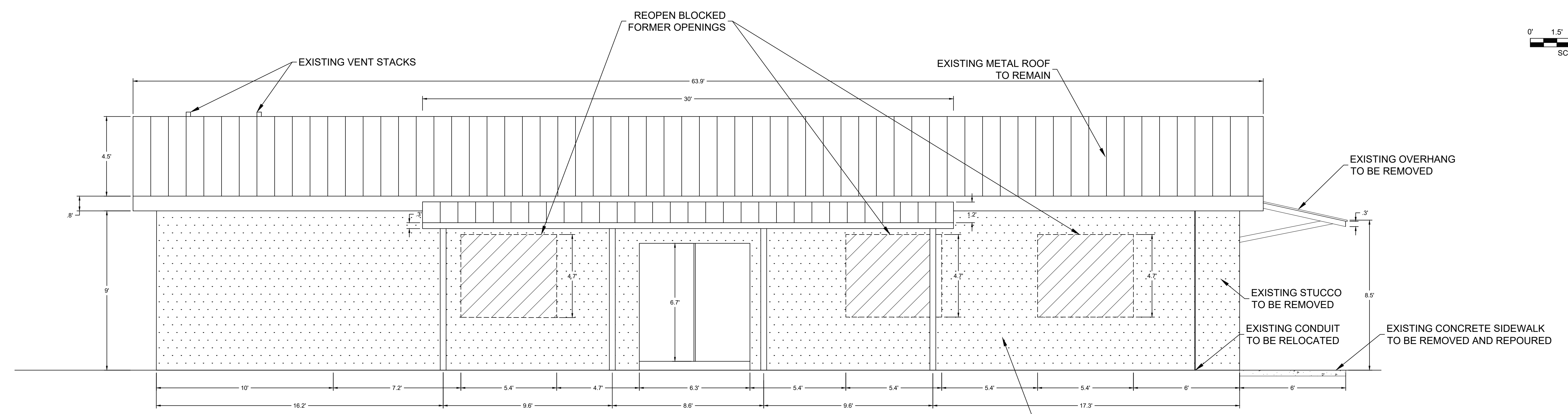
PLUMBING DEMOLITION PLAN
CALLAWAY COMMUNITY CENTER
 CITY OF CALLAWAY, FL

James H. Slonina, P.E. 39197
 Christopher B. Forehand, P.E. 58028
 J. Doug Crook, P.E. 66556
 Matt Z. Lewis, P.E. 84236
 William B. Thompson, P.E. 95046

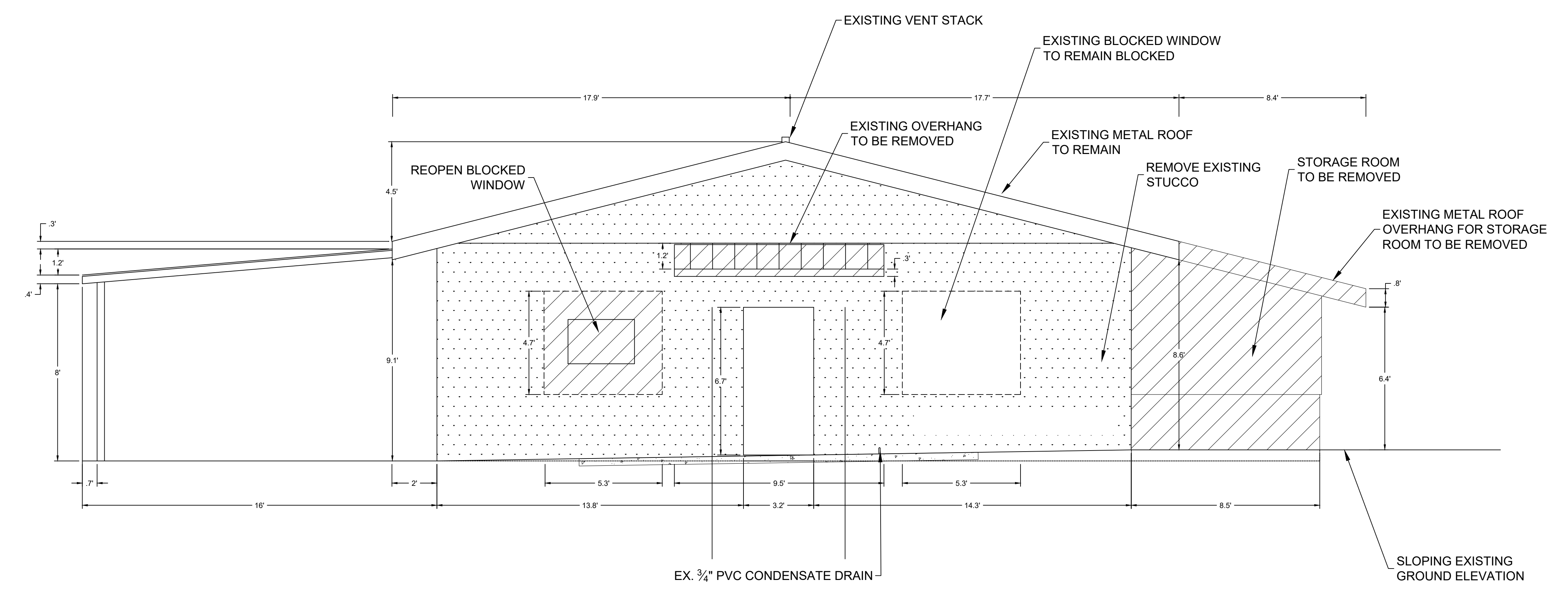
9-Dec-24

SHEET NUMBER	4
PROJECT NUMBER	26043

26043 CALLAWAY COMMUNITY CENTER PLUMBING DEMOLITION PLAN Sheet 4



SOUTH ELEVATION



EAST ELEVATION

Date: 12/09/2024 2:17 PM File: P:\26043_Case Park Callaway Callaway (Big Improvement) Civil\3D\Exterior\Drawings\26043_E2.dwg

REV	DATE	BY	REVISIONS

SCALE: AS NOTED
DESIGNED BY: CBF
DRAWN BY: CBG
REVIEWED BY: CBF
ISSUE DATE: DECEMBER 2024
ACAD FILE NAME: 26043_E2.dwg

PANHANDLE ENGINEERING
 ENVIRONMENTAL ENGINEERS • CIVIL ENGINEERS • LAND PLANNERS
 600 Ohio Avenue Lynn Haven, Florida 32444
 (850)763-5200 www.panhandleengineering.com

EXISTING AND DEMO. ELEVATION PLAN ~ SOUTH AND EAST VIEWS
 CALLAWAY COMMUNITY CENTER
 CITY OF CALLAWAY, FL

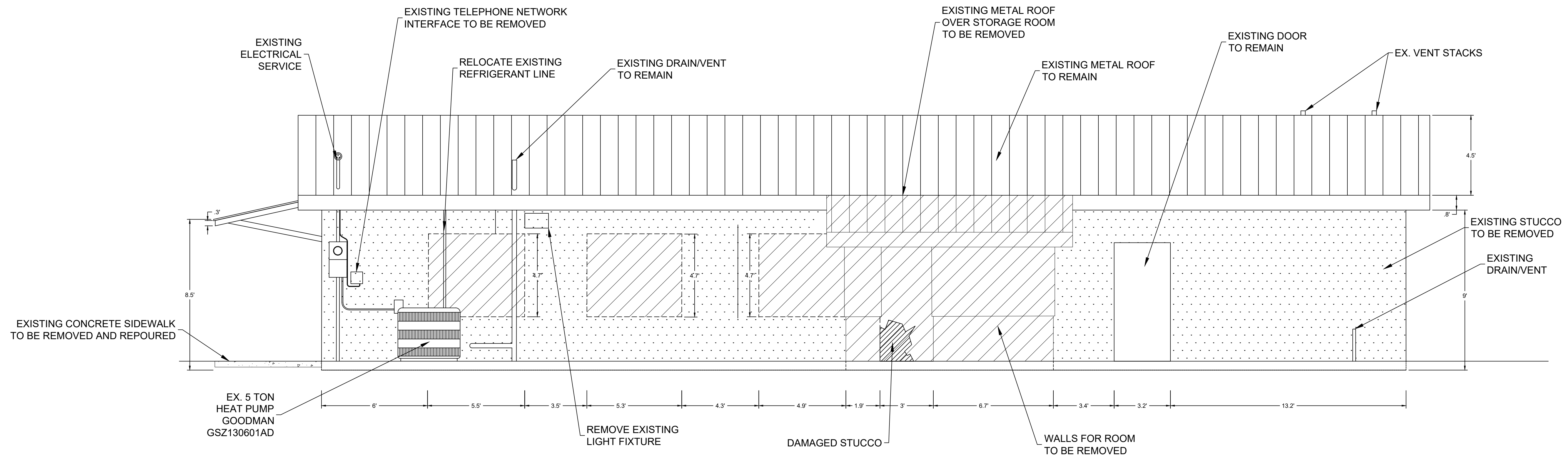
James H. Slonina, P.E. 39197
 Christopher B. Forehand, P.E. 58028
 J. Doug Crook, P.E. 66556
 Watt Z. Lewis, P.E. 84236
 William B. Thompson, P.E. 95046

9-Dec-24

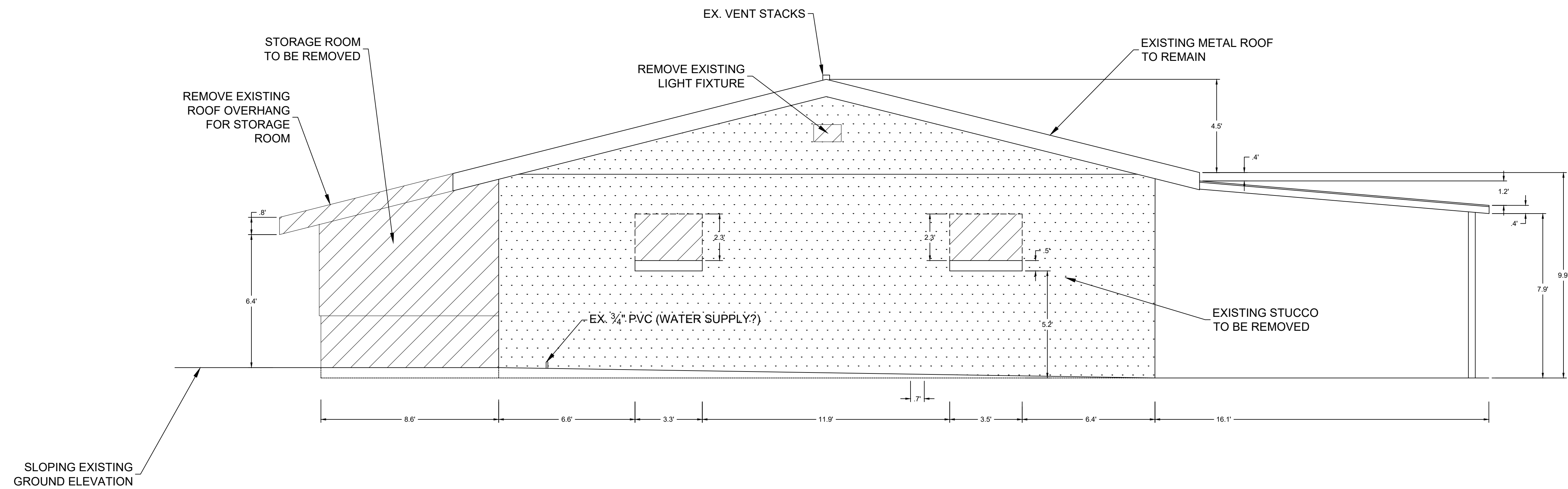
DPR CERTIFICATION #EB-7806

SHEET NUMBER	5
PROJECT NUMBER	26043

26043 EXISTING AND DEMO. ELEVATION PLAN ~ SOUTH AND EAST VIEWS CENTER EXISTING AND DEMO. ELEVATION PLAN ~ SOUTH AND EAST VIEWS SHEET 5



NORTH ELEVATION



WEST ELEVATION

REV	DATE	BY	REVISIONS

SCALE: AS NOTED
DESIGNED BY: CBF
DRAWN BY: CBG
REVIEWED BY: CBF
ISSUE DATE: DECEMBER 2024
ACAD FILE NAME: 26043_E2.dwg

PANHANDLE ENGINEERING
 ENVIRONMENTAL ENGINEERS • CIVIL ENGINEERS • LAND PLANNERS
 600 Ohio Avenue Lynn Haven, Florida 32444
 (850)763-5200 www.panhandleengineering.com

EXISTING AND DEMO. ELEVATION PLAN ~ NORTH AND WEST VIEWS
 CALLAWAY COMMUNITY CENTER
 CITY OF CALLAWAY, FL

James H. Slonina, P.E. 39197
 Christopher B. Forehand, P.E. 58028
 J. Doug Crook, P.E. 66556
 Watt Z. Lewis, P.E. 84236
 William B. Thompson, P.E. 95046

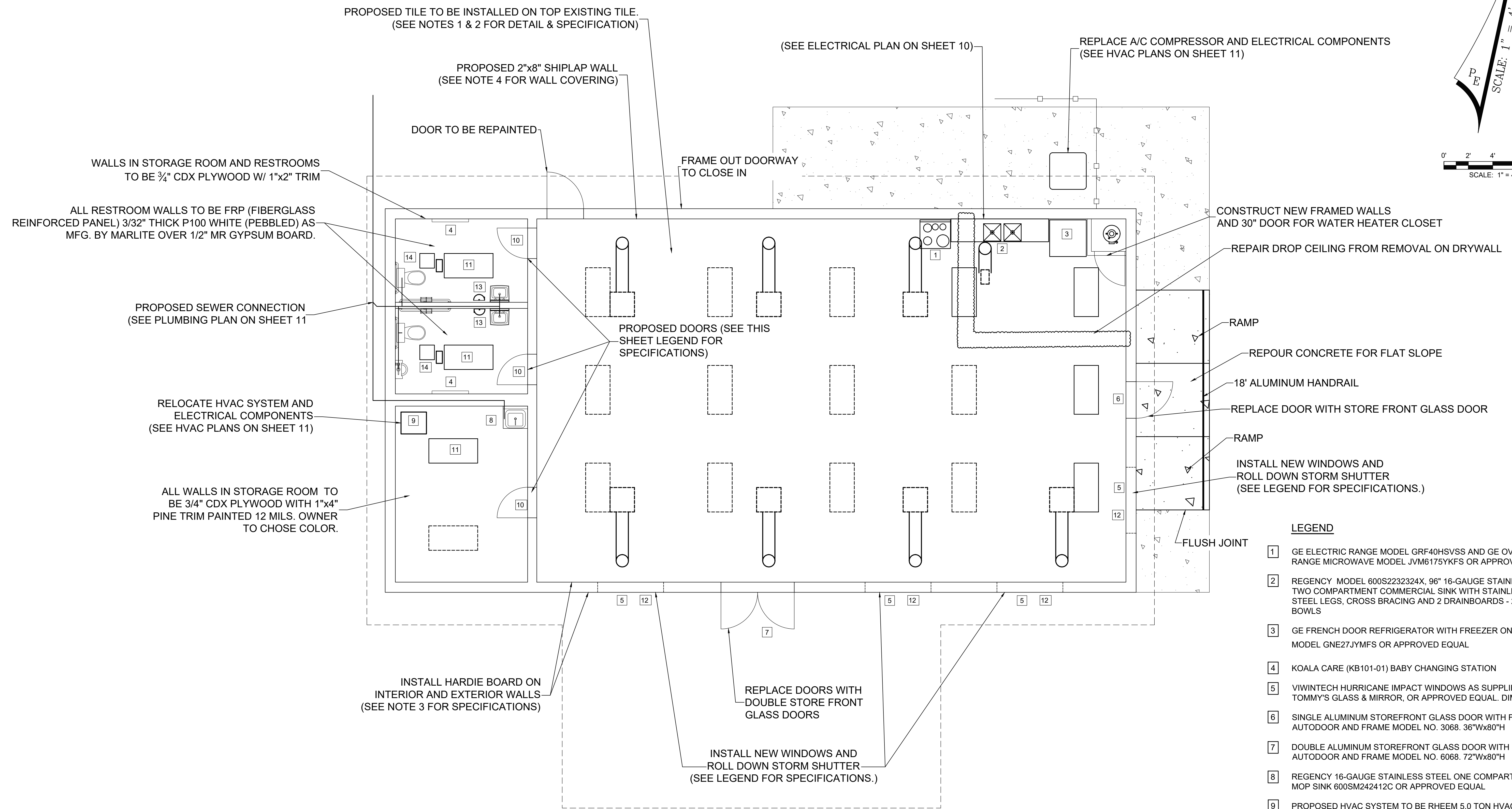
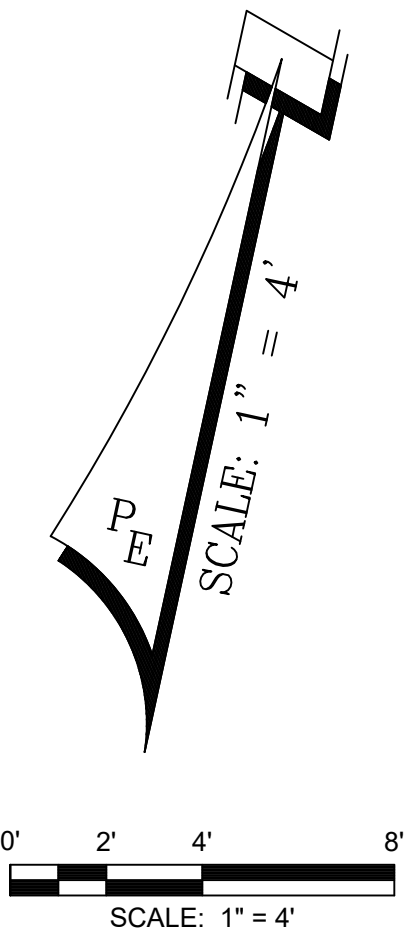
9-Dec-24

DPR CERTIFICATION #EB-7806

SHEET NUMBER	6
PROJECT NUMBER	26043

Date: 12/09/2024 2:17 PM File: P:\26043_Case Park Callaway (Bldg Improvement)\Civil\3D\Folder\Drawings\26043_E2.dwg

26043 EXISTING AND DEMO. ELEVATION PLAN ~ NORTH AND WEST VIEWS CENTER EXISTING AND DEMO. ELEVATION PLAN ~ NORTH AND WEST VIEWS Sheet 6



WALLS IN STORAGE ROOM AND RESTROOMS TO BE 3/4" CDX PLYWOOD W/ 1"x2" TRIM

ALL RESTROOM WALLS TO BE FRP (FIBERGLASS REINFORCED PANEL) 3/32" THICK P100 WHITE (PEBBLED) AS MFG. BY MARLITE OVER 1/2" MR GYPSUM BOARD.

PROPOSED SEWER CONNECTION (SEE PLUMBING PLAN ON SHEET 11)

RELOCATE HVAC SYSTEM AND ELECTRICAL COMPONENTS (SEE HVAC PLANS ON SHEET 11)

ALL WALLS IN STORAGE ROOM TO BE 3/4" CDX PLYWOOD WITH 1"x4" PINE TRIM PAINTED 12 MILS. OWNER TO CHOSE COLOR.

PROPOSED TILE TO BE INSTALLED ON TOP EXISTING TILE. (SEE NOTES 1 & 2 FOR DETAIL & SPECIFICATION)

PROPOSED 2"x8" SHIPLAP WALL (SEE NOTE 4 FOR WALL COVERING)

DOOR TO BE REPAINTED

FRAME OUT DOORWAY TO CLOSE IN

(SEE ELECTRICAL PLAN ON SHEET 10)

REPLACE A/C COMPRESSOR AND ELECTRICAL COMPONENTS (SEE HVAC PLANS ON SHEET 11)

CONSTRUCT NEW FRAMED WALLS AND 30" DOOR FOR WATER HEATER CLOSET

REPAIR DROP CEILING FROM REMOVAL ON DRYWALL

RAMP

REPOUR CONCRETE FOR FLAT SLOPE

18" ALUMINUM HANDRAIL

REPLACE DOOR WITH STORE FRONT GLASS DOOR

RAMP

INSTALL NEW WINDOWS AND ROLL DOWN STORM SHUTTER (SEE LEGEND FOR SPECIFICATIONS.)

FLUSH JOINT

INSTALL HARDIE BOARD ON INTERIOR AND EXTERIOR WALLS (SEE NOTE 3 FOR SPECIFICATIONS)

REPLACE DOORS WITH DOUBLE STORE FRONT GLASS DOORS

INSTALL NEW WINDOWS AND ROLL DOWN STORM SHUTTER (SEE LEGEND FOR SPECIFICATIONS.)

LEGEND

- 1 GE ELECTRIC RANGE MODEL GRF40HSVSS AND GE OVER THE RANGE MICROWAVE MODEL JVM6175YKFS OR APPROVED EQUALS
- 2 REGENCY MODEL 600S2232324X, 96" 16-GAUGE STAINLESS STEEL TWO COMPARTMENT COMMERCIAL SINK WITH STAINLESS STEEL STEEL LEGS, CROSS BRACING AND 2 DRAINBOARDS - 23"x23"x12" BOWLS
- 3 GE FRENCH DOOR REFRIGERATOR WITH FREEZER ON BOTTOM MODEL GNE27JYMF5 OR APPROVED EQUAL
- 4 KOALA CARE (KB101-01) BABY CHANGING STATION
- 5 VIWINTCH HURRICANE IMPACT WINDOWS AS SUPPLIED BY TOMMY'S GLASS & MIRROR, OR APPROVED EQUAL. DIMS. 66"W x 57"H
- 6 SINGLE ALUMINUM STOREFRONT GLASS DOOR WITH FRAME AUTODOOR AND FRAME MODEL NO. 3068. 36"Wx80"H
- 7 DOUBLE ALUMINUM STOREFRONT GLASS DOOR WITH FRAME AUTODOOR AND FRAME MODEL NO. 6068. 72"Wx80"H
- 8 REGENCY 16-GAUGE STAINLESS STEEL ONE COMPARTMENT FLOOR MOP SINK 600SM242412C OR APPROVED EQUAL
- 9 PROPOSED HVAC SYSTEM TO BE RHEEM 5.0 TON HVAC 18.0 SEER2 SYSTEM OR APPROVED EQUAL.
- 10 3'-0"x6'-8"x1 3/4" SOLID CORE "FG" FLUSH PANEL FILL-IN FIBERGLASS DOOR BY "PEACHTREE DOORS"
- 11 H.E. WILLIAMS LED LIGHT CAT. NO.EGL2-4-L250/850-HIAFR-DRV-UNV
- 12 64" X 60" ROLLING HURRICANE SHUTTER- 55 MM
- 13 EXCEL HIGH EFFICIENCY SURFACE MOUNTED ADA COMPLIANT ELECTRIC HAND DRYER. MODEL THINAIR TA-W OR APPROVED EQUAL.
- 14 BROAN HIGH CAPACITY, LIGHT COMMERCIAL CEILING MOUNT VENTILATION FAN, MODEL L300E OR APPROVED EQUAL.

- NOTES:**
1. EXISTING TILE FLOORING TO REMAIN AND NEW TILE PLACED ON TOP.
 2. NEW TILE TO BE DAL TILE SLATE ATTACHE 12" x 24" META DARK GRAY.
 3. HARDIE BOARD TO BE USED ON EXTERIOR - JAMES HARDIE PRIMED-HZ 10 FIBER CEMENT CEDARMILL LAP SIDING 8.25" X 144".
 4. 2"x8" SHIPLAP PINE T&G V-GROOVE QUICK-LOCK WALL PLANKS OR APPROVED EQUAL TO BE USED ON INTERIOR WALLS. (COLOR CHOICE TO BE MADE BY CLIENT).
 5. ALL TRIM TO BE REPLACE WITH 1"x4" CRAFTSMAN TRIM. (FLOORS, CORNERS, CEILINGS, DOORS, AND WINDOW FRAMES)

REV	DATE	BY	REVISIONS	SCALE
				AS NOTED
				DESIGNED BY: CBF
				DRAWN BY: CBG
				REVIEWED BY: CBF
				ISSUE DATE: DECEMBER 2024
				ACAD FILE NAME: 26043_E1.dwg

PANHANDLE ENGINEERING
 ENVIRONMENTAL ENGINEERS • CIVIL ENGINEERS • LAND PLANNERS
 600 Ohio Avenue Lynn Haven, Florida 32444
 (850)763-5200 www.panhandleengineering.com

**PROPOSED FLOOR PLAN
 CALLAWAY COMMUNITY
 CENTER
 CITY OF CALLAWAY, FL**

James H. Slonina, P.E. 39197
 Christopher B. Forehand, P.E. 58028
 J. Doug Crook, P.E. 66556
 Watt Z. Lewis, P.E. 84236
 William B. Thompson, P.E. 95046

9-Dec-24

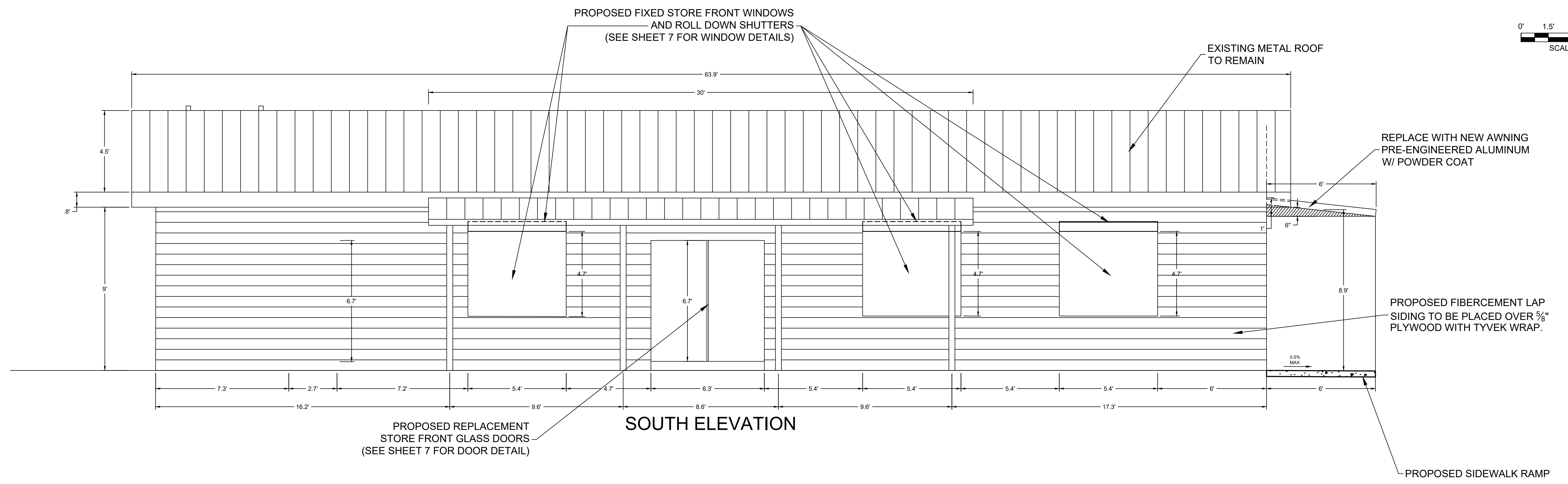
DPR CERTIFICATION #EB-7806

SHEET NUMBER
7

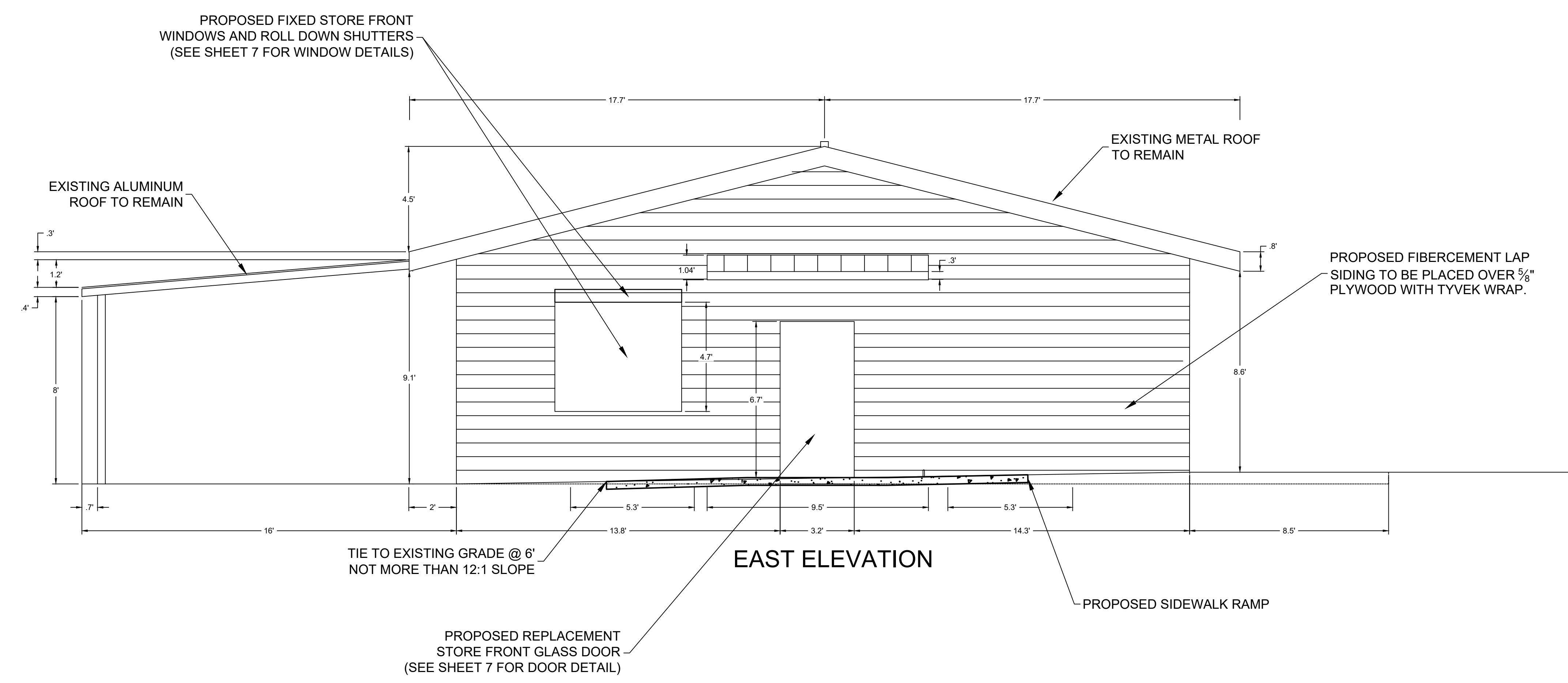
PROJECT NUMBER
26043

Date: 12/20/2024 2:17 PM File: P:\26043 Callaway Blg Improvements\1. Civil\3DFloorPlan\Design\26043_E1.dwg

26043 CALLAWAY COMMUNITY CENTER PROPOSED FLOOR PLAN Sheet 7



SOUTH ELEVATION



EAST ELEVATION

Date: 12/20/2024 2:17 PM File: P:\26043_CoCo Park Callaway (Bldg. Improvement)\Civil\3D\Fiber\Drawings\26043E2.dwg

REV	DATE	BY	REVISIONS

SCALE: AS NOTED
DESIGNED BY: CBF
DRAWN BY: CBG
REVIEWED BY: CBF
ISSUE DATE: DECEMBER 2024
ACAD FILE NAME: 26043_E2.dwg

PANHANDLE ENGINEERING
 ENVIRONMENTAL ENGINEERS • CIVIL ENGINEERS • LAND PLANNERS
 600 Ohio Avenue Lynn Haven, Florida 32444
 (850)763-5200 www.panhandleengineering.com

**PROPOSED ELEVATION PLAN ~ SOUTH AND EAST VIEWS
 CALLAWAY COMMUNITY CENTER
 CITY OF CALLAWAY, FL**

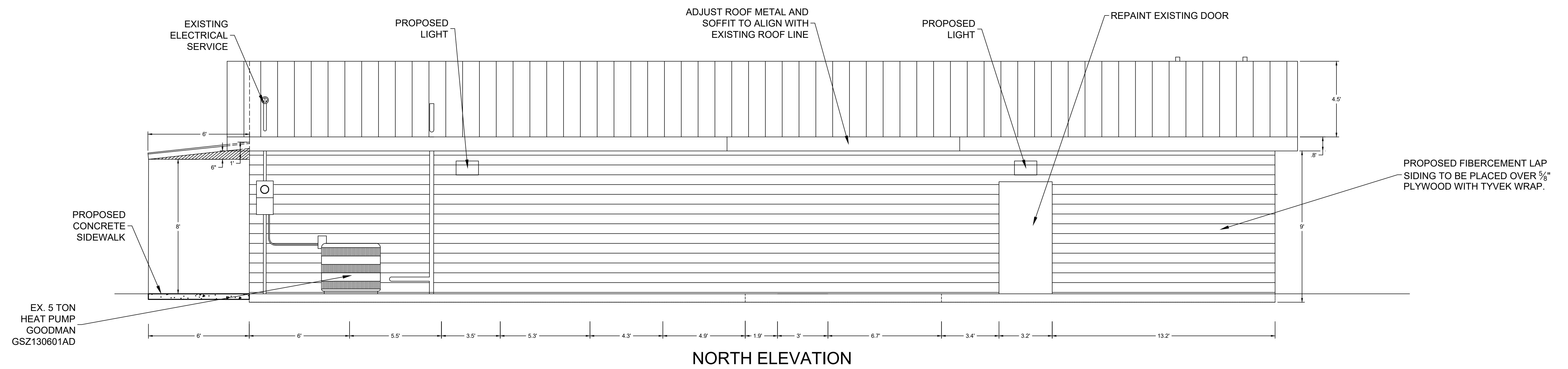
James H. Slonina, P.E. 39197
 Christopher B. Forehand, P.E. 58028
 J. Doug Cook, P.E. 66556
 Watt Z. Lewis, P.E. 84238
 William B. Thompson, P.E. 95046

9-Dec-24

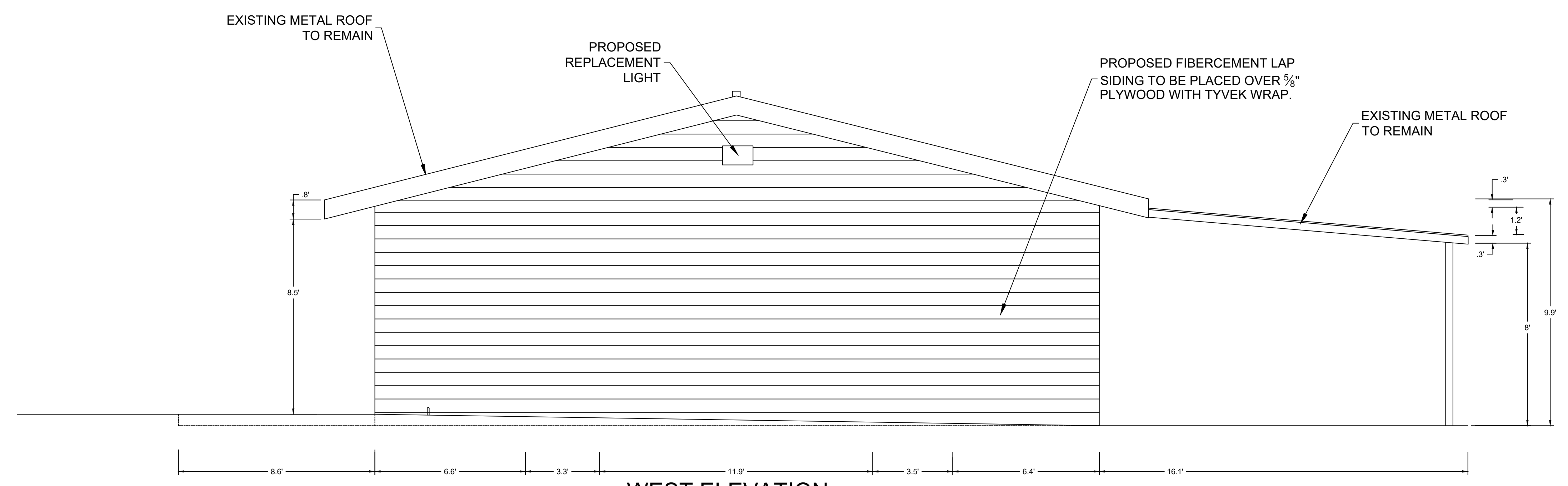
DPR CERTIFICATION #EB-7806

SHEET NUMBER	8
PROJECT NUMBER	26043

26043 PROPOSED ELEVATION PLAN ~ SOUTH AND EAST VIEWS CENTER PROPOSED ELEVATION PLAN ~ SOUTH AND EAST VIEWS Sheet 8



NORTH ELEVATION



WEST ELEVATION

Date: 12/20/24 2:17 PM File: P:\26043_Case Park Callaway (Bldg Improvement)\Civil\3D\Fiber\Drawings\26043_E2.dwg

REV	DATE	BY	REVISIONS

SCALE: AS NOTED
DESIGNED BY: CBF
DRAWN BY: CBG
REVIEWED BY: CBF
ISSUE DATE: DECEMBER 2024
ACAD FILE NAME: 26043_E2.dwg

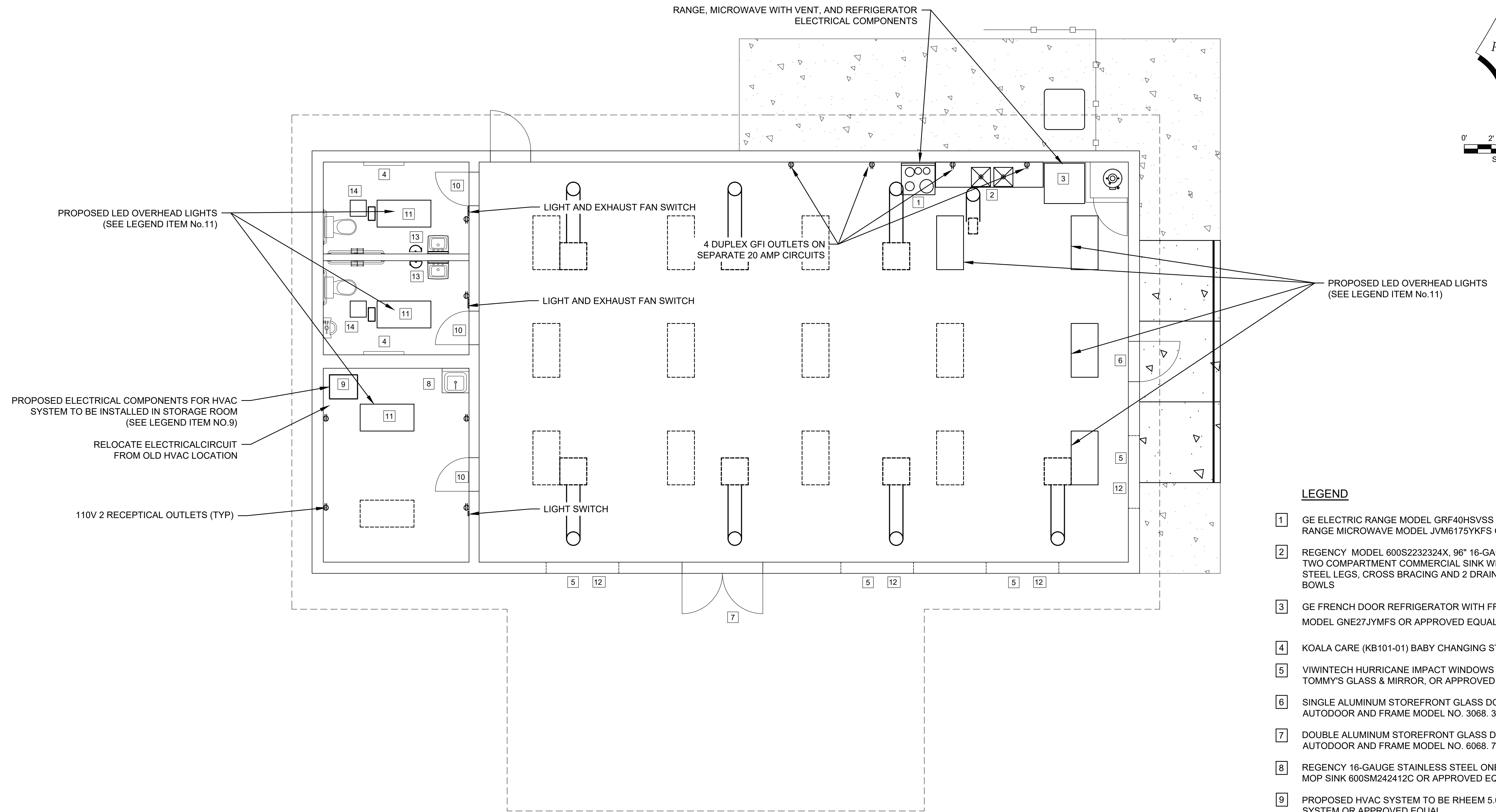
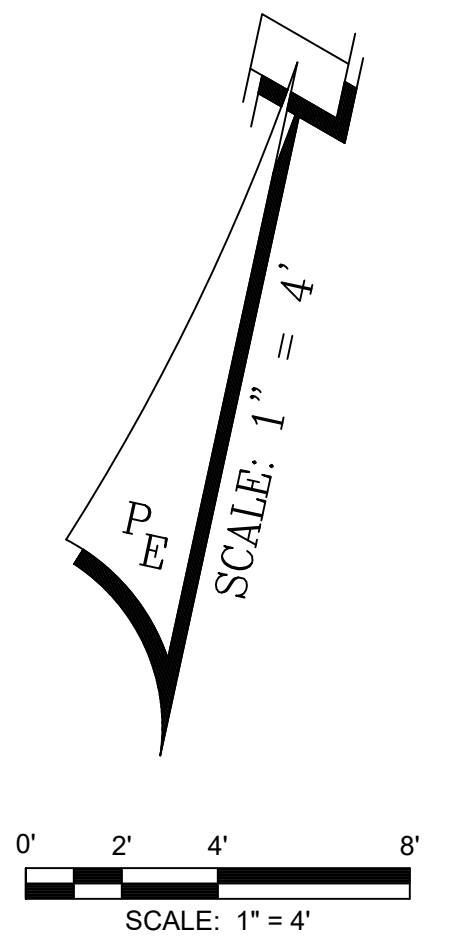
PANHANDLE ENGINEERING
 ENVIRONMENTAL ENGINEERS • CIVIL ENGINEERS • LAND PLANNERS
 600 Ohio Avenue Lynn Haven, Florida 32444
 (850)763-5200 www.panhandleengineering.com

PROPOSED ELEVATION PLAN ~NORTH AND WEST VIEWS
CALLAWAY COMMUNITY CENTER
 CITY OF CALLAWAY, FL

James H. Slonina, P.E. 39197
 Christopher B. Forehand, P.E. 58028
 J. Doug Crook, P.E. 66556
 Watt Z. Lewis, P.E. 84236
 William B. Thompson, P.E. 95046
 9-Dec-24
 DPR CERTIFICATION #EB-7806

SHEET NUMBER	9
PROJECT NUMBER	26043

26043 PROPOSED ELEVATION PLAN ~NORTH AND WEST VIEWS CENTER PROPOSED ELEVATION PLAN ~NORTH AND WEST VIEWS Sheet 9



- NOTES:**
1. RELOCATE HVAC SYSTEM TO STORAGE ROOM.
 2. RELOCATE HVAC SYSTEM ELECTRICAL SYSTEM TO NEW LOCATION.
 3. UNABLE TO DETERMINE DUCTING DESIGN DUE TO NO ACCESS ABOVE DROP CEILING. VERIFY DUCTING LOCATION BEFORE INSTALLATION. (DESIGN MUST BE APPROVED BY ENGINEER).
 4. ALL ELECTRICAL RECEPTACLES AND PLATES TO BE REMOVED AND REPLACED WITH ALL WHITE COMMERCIAL GRADE RECEPTACLES AND PLATES.

- LEGEND**
- 1 GE ELECTRIC RANGE MODEL GRF40HSVSS AND GE OVER THE RANGE MICROWAVE MODEL JVM6175YKFS OR APPROVED EQUALS
 - 2 REGENCY MODEL 600S2232324X, 96" 16-GAUGE STAINLESS STEEL TWO COMPARTMENT COMMERCIAL SINK WITH STAINLESS STEEL STEEL LEGS, CROSS BRACING AND 2 DRAINBOARDS - 23"x23"x12" BOWLS
 - 3 GE FRENCH DOOR REFRIGERATOR WITH FREEZER ON BOTTOM MODEL GNE27JYMFS OR APPROVED EQUAL
 - 4 KOALA CARE (KB101-01) BABY CHANGING STATION
 - 5 VIWINTCH HURRICANE IMPACT WINDOWS AS SUPPLIED BY TOMMY'S GLASS & MIRROR, OR APPROVED EQUAL. DIMS. 66"W x 57"H
 - 6 SINGLE ALUMINUM STOREFRONT GLASS DOOR WITH FRAME AUTODOOR AND FRAME MODEL NO. 3068. 36"Wx80"H
 - 7 DOUBLE ALUMINUM STOREFRONT GLASS DOOR WITH FRAME AUTODOOR AND FRAME MODEL NO. 6068. 72"Wx80"H
 - 8 REGENCY 16-GAUGE STAINLESS STEEL ONE COMPARTMENT FLOOR MOP SINK 600SM242412C OR APPROVED EQUAL
 - 9 PROPOSED HVAC SYSTEM TO BE RHEEM 5.0 TON HVAC 18.0 SEER2 SYSTEM OR APPROVED EQUAL.
 - 10 3'-0"x6'-8"x1 3/4" SOLID CORE "FG" FLUSH PANEL FILL-IN FIBERGLASS DOOR BY "PEACHTREE DOORS"
 - 11 H.E. WILLIAMS LED LIGHT CAT. NO.EGL2-4-L250/850-HIAFR-DRV-UNV
 - 12 64" X 60" ROLLING HURRICANE SHUTTER- 55 MM
 - 13 EXCEL HIGH EFFICIENCY SURFACE MOUNTED ADA COMPLIANT ELECTRIC HAND DRYER. MODEL THINAIR TA-W OR APPROVED EQUAL.
 - 14 BROAN HIGH CAPACITY, LIGHT COMMERCIAL CEILING MOUNT VENTILATION FAN, MODEL L300E OR APPROVED EQUAL.

Date: 12/02/2024 2:17 PM File: P:\26043 Callaway Blg Improvements\1_Civil\3D\Fabric\Drawings\2_DESIGN\26043_E1.dwg

REV	DATE	BY	REVISIONS

SCALE: AS NOTED
DESIGNED BY: CBF
DRAWN BY: CBG
REVIEWED BY: CBF
ISSUE DATE: DECEMBER 2024
ACAD FILE NAME: 26043_E1.dwg

PANHANDLE ENGINEERING
 ENVIRONMENTAL ENGINEERS • CIVIL ENGINEERS • LAND PLANNERS
 600 Ohio Avenue Lynn Haven, Florida 32444
 (850)763-5200 www.panhandleengineering.com

PROPOSED ELECTRICAL PLAN
CALLAWAY COMMUNITY CENTER
 CITY OF CALLAWAY, FL

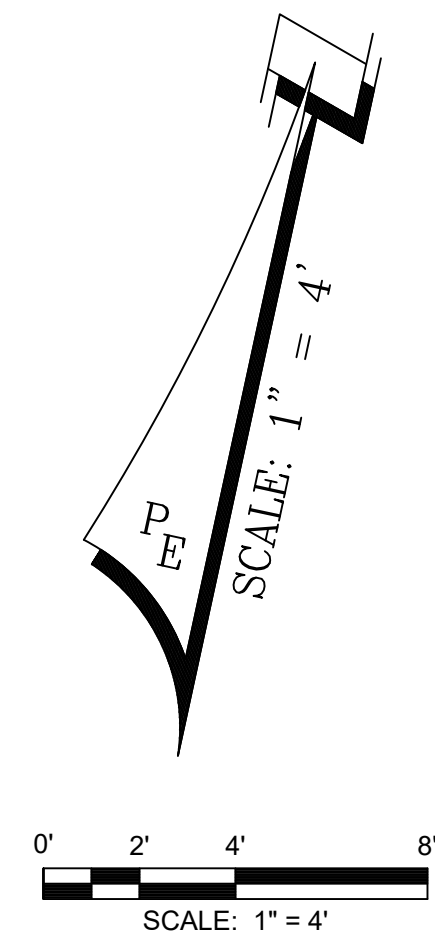
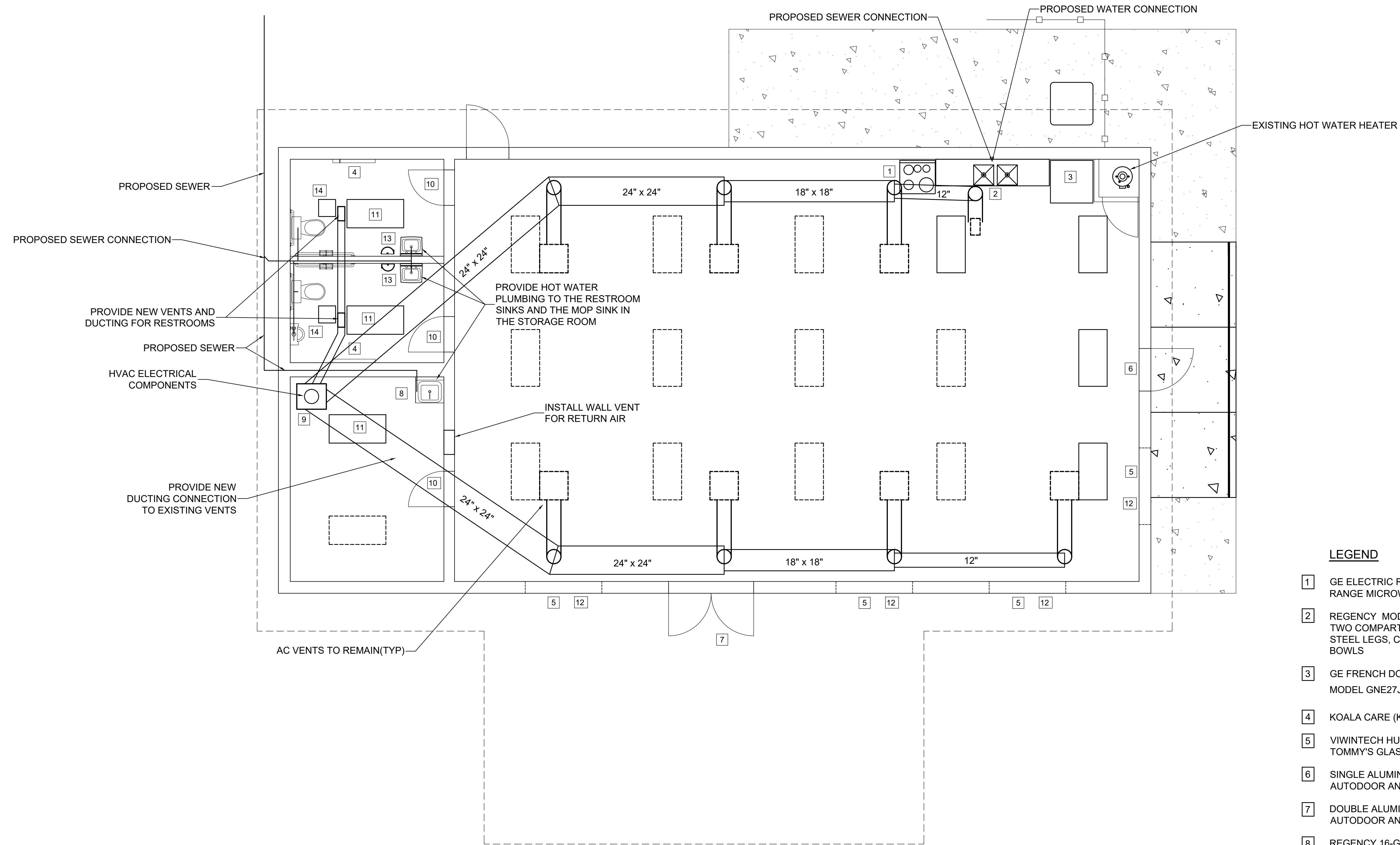
James H. Slonina, P.E. 39197
 Christopher B. Forehand, P.E. 58028
 J. Doug Crook, P.E. 66556
 Watt Z. Lewis, P.E. 84236
 William B. Thompson, P.E. 95046

9-Dec-24

DPR CERTIFICATION #EB-7806

SHEET NUMBER	10
PROJECT NUMBER	26043

26043 CALLAWAY COMMUNITY CENTER PROPOSED ELECTRICAL PLAN Sheet 10



LEGEND

- 1 GE ELECTRIC RANGE MODEL GRF40HSVSS AND GE OVER THE RANGE MICROWAVE MODEL JVM6175YKFS OR APPROVED EQUALS
- 2 REGENCY MODEL 600S2232324X, 96" 16-GAUGE STAINLESS STEEL TWO COMPARTMENT COMMERCIAL SINK WITH STAINLESS STEEL STEEL LEGS, CROSS BRACING AND 2 DRAINBOARDS - 23"x23"x12" BOWLS
- 3 GE FRENCH DOOR REFRIGERATOR WITH FREEZER ON BOTTOM MODEL GNE27JYMFS OR APPROVED EQUAL
- 4 KOALA CARE (KB101-01) BABY CHANGING STATION
- 5 VIWINTCH HURRICANE IMPACT WINDOWS AS SUPPLIED BY TOMMY'S GLASS & MIRROR, OR APPROVED EQUAL. DIMS. 66"W x 57"H
- 6 SINGLE ALUMINUM STOREFRONT GLASS DOOR WITH FRAME AUTODOOR AND FRAME MODEL NO. 3068. 36"Wx80"H
- 7 DOUBLE ALUMINUM STOREFRONT GLASS DOOR WITH FRAME AUTODOOR AND FRAME MODEL NO. 6068. 72"Wx80"H
- 8 REGENCY 16-GAUGE STAINLESS STEEL ONE COMPARTMENT FLOOR MOP SINK 600SM242412C OR APPROVED EQUAL
- 9 PROPOSED HVAC SYSTEM TO BE RHEEM 5.0 TON HVAC 18.0 SEER2 SYSTEM OR APPROVED EQUAL.
- 10 3'-0"x6'-8"x1 3/4" SOLID CORE "FG" FLUSH PANEL FILL-IN FIBERGLASS DOOR BY "PEACHTREE DOORS"
- 11 H.E. WILLIAMS LED LIGHT CAT. NO.EGL2-4-L250/850-HIAFR-DRV-UNV
- 12 64" X 60" ROLLING HURRICANE SHUTTER- 55 MM
- 13 EXCEL HIGH EFFICIENCY SURFACE MOUNTED ADA COMPLIANT ELECTRIC HAND DRYER. MODEL THINAIR TA-W OR APPROVED EQUAL.
- 14 BROAN HIGH CAPACITY, LIGHT COMMERCIAL CEILING MOUNT VENTILATION FAN, MODEL L300E OR APPROVED EQUAL.

Date: 12/09/2024 2:17 PM File: P:\2043 Callaway Blg Improvements\1. Civil\3D\Fiber\Drawings\2 DESIGN\2043_E1.dwg

REV	DATE	BY	REVISIONS

SCALE: AS NOTED
DESIGNED BY: CBF
DRAWN BY: CBG
REVIEWED BY: CBF
ISSUE DATE: DECEMBER 2024
ACAD FILE NAME: 26043_E1.dwg

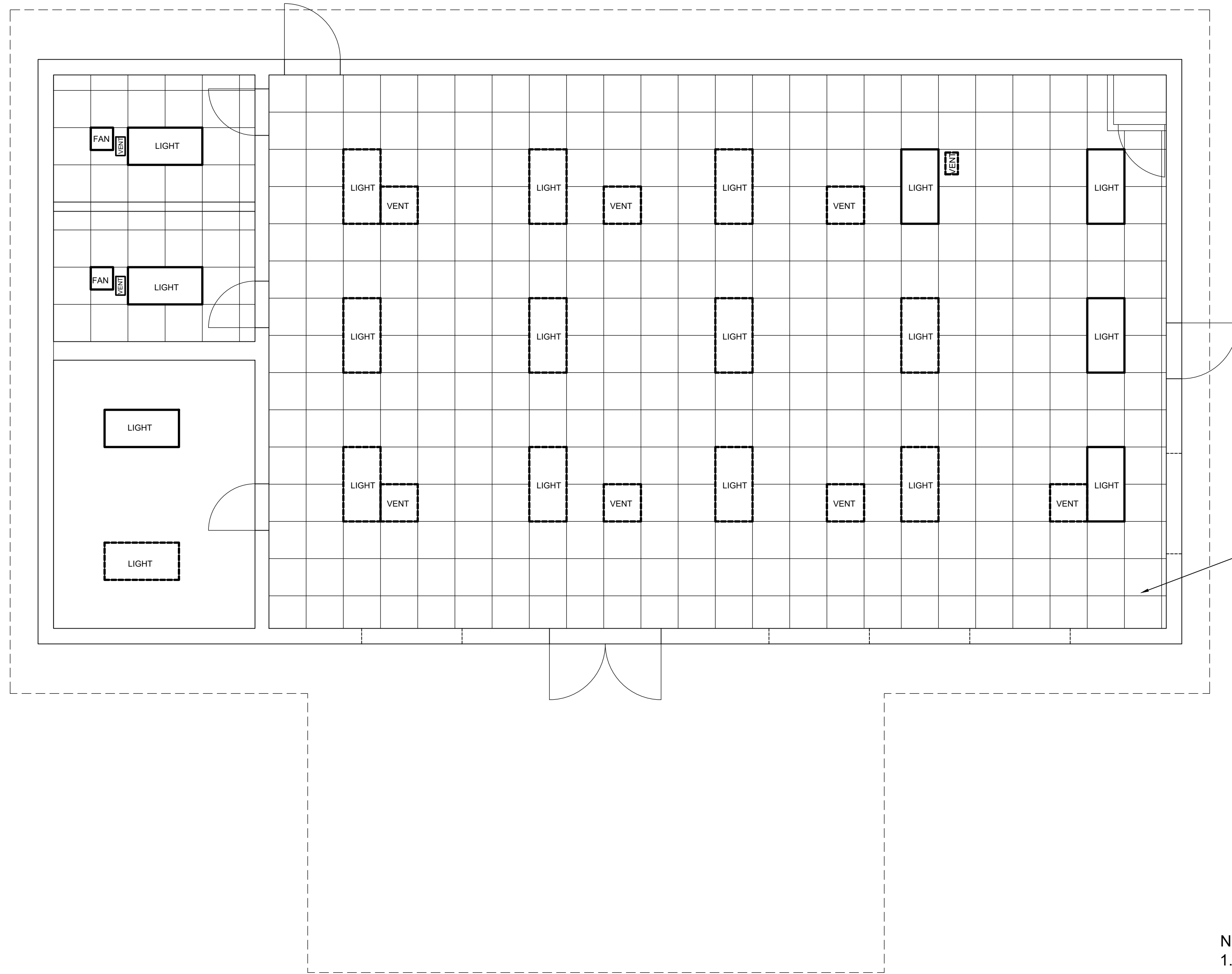
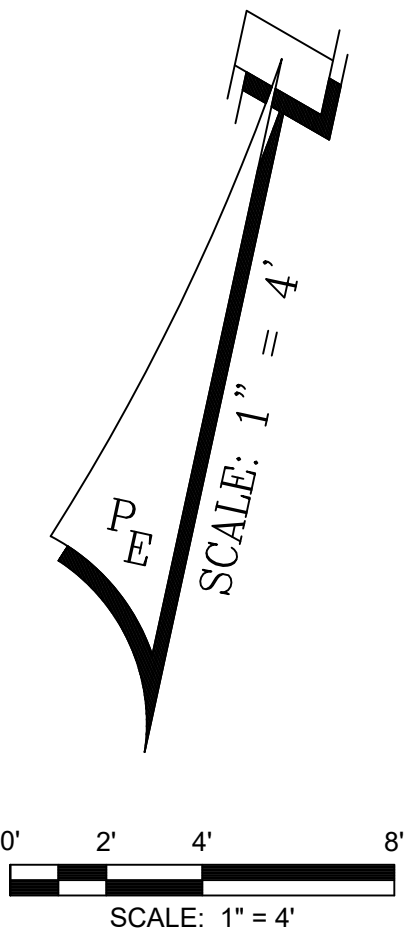
PANHANDLE ENGINEERING
 ENVIRONMENTAL ENGINEERS • CIVIL ENGINEERS • LAND PLANNERS
 600 Ohio Avenue Lynn Haven, Florida 32444
 (850)763-5200 www.panhandleengineering.com

**PROPOSED PLUMBING, HVAC, AND RESTROOM PLANS
 CALLAWAY COMMUNITY CENTER
 CITY OF CALLAWAY, FL**

James H. Slonina, P.E. 39197 Christopher B. Forehand, P.E. 58028 J. Doug Crook, P.E. 66556 Walt Z. Lewis, P.E. 84236 William B. Thompson, P.E. 95046
9-Dec-24
DPR CERTIFICATION #EB-7806

SHEET NUMBER 11
PROJECT NUMBER 26043

26043 CALLAWAY COMMUNITY CENTER PROPOSED PLUMBING, HVAC, AND RESTROOM PLANS Sheet 11



2' x 2' TILES FOR
DROP CEILING (TYP)

NOTES:

1. DROP CEILING IS LOCATED 10 1/2" BELOW ORIGINAL EXISTING CEILING IN MAIN ROOM, WITHOUT ACCESS TO ATTIC/ CRAWL SPACE.
2. DROP CEILING IS LOCATED 17" BELOW ORIGINAL EXISTING CEILING IN RESTROOMS. WITHOUT ACCESS TO ATTIC/ CRAWL SPACE. UNABLE TO DETERMINE FULL DESIGN OF HVAC DUCTING ABOVE ORIGINAL EXISTING CEILING.
3. REMOVE ALL EXISTING CEILING TILE AND DROP CEILINGS. THERE ARE TWO (2).
4. ALL NEW CEILINGS TO BE ACOUSTICAL WITH DROP IN TILES. TYPE TO BE CHOSEN BY OWNER.

Date: 12/09/2024 2:17 PM File: P:\26043 Callaway Blg Improvements\1_Civil\3D\Floor\Drawings\26043_CEILING_26043_E1.dwg

REV	DATE	BY	REVISIONS

SCALE: AS NOTED
DESIGNED BY: CBF
DRAWN BY: CBG
REVIEWED BY: CBF
ISSUE DATE: DECEMBER 2024
ACAD FILE NAME: 26043_E1.dwg

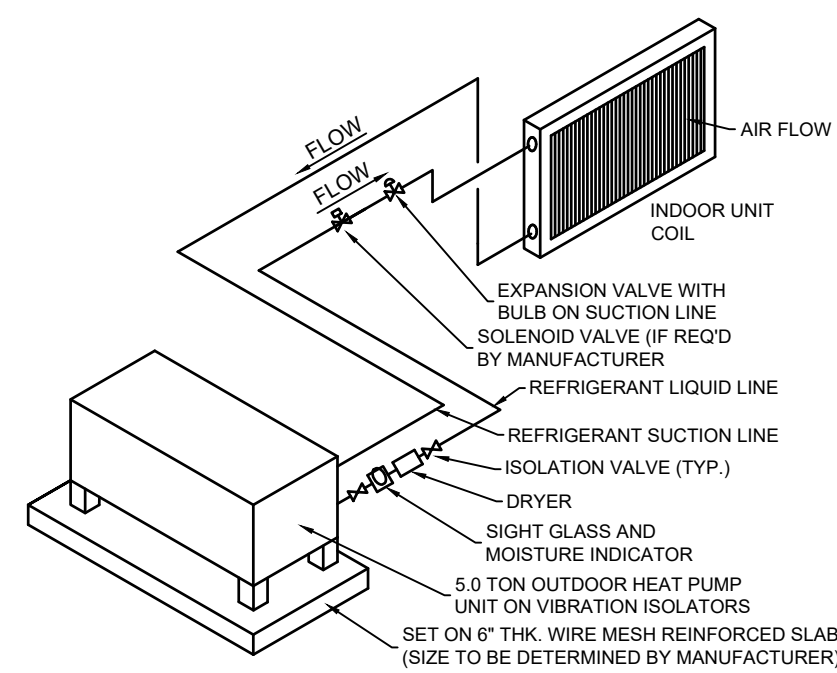

PANHANDLE ENGINEERING
 ENVIRONMENTAL ENGINEERS • CIVIL ENGINEERS • LAND PLANNERS
 600 Ohio Avenue Lynn Haven, Florida 32444
 (850)763-5200 www.panhandleengineering.com

PROPOSED REFLECTIVE CEILING PLAN
CALLAWAY COMMUNITY CENTER
 CITY OF CALLAWAY, FL

James H. Slonina, P.E. 39197 Christopher B. Forehand, P.E. 58028 J. Doug Crook, P.E. 66556 Watt Z. Lewis, P.E. 84238 William B. Thompson, P.E. 95046	9-Dec-24
--	----------

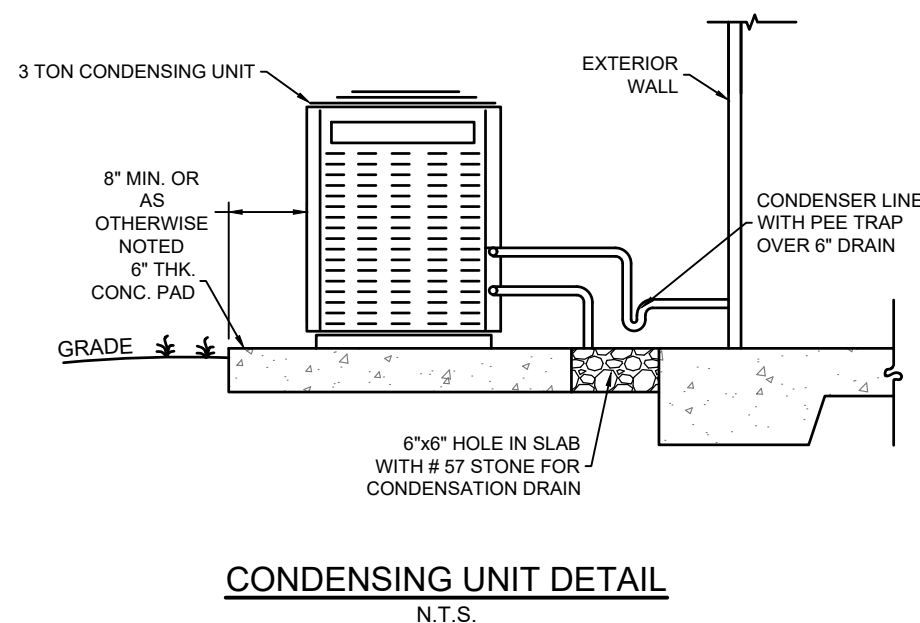
SHEET NUMBER	12
PROJECT NUMBER	26043

26043 CALLAWAY COMMUNITY CENTER PROPOSED REFLECTIVE CEILING PLAN Sheet 12



- NOTES:**
- INSULATE SUCTION LINE.
 - PITCH ALL HORIZONTAL SUCTION PIPING A MINIMUM OF 1/2" IN 10' IN DIRECTION OF FLOW.
 - EQUIPMENT MANUFACTURER SHALL DETERMINE THE REFRIGERANT PIPE SIZES, PROVIDE SOLENOID VALVE, ACCUMULATOR AND OTHER REFRIGERANT SPECIALTIES AS RECOMMENDED BY THE MANUFACTURER.
 - WHERE REFRIGERANT PIPING IS NOT SHOWN, ROUTE AS DIRECTLY AS POSSIBLE FROM OUTDOOR UNIT ABOVE GRADE THRU WALL TO AHU.

REFRIGERANT PIPING SCHEMATIC
SPLIT SYSTEM HEAT PUMP
N.T.S.



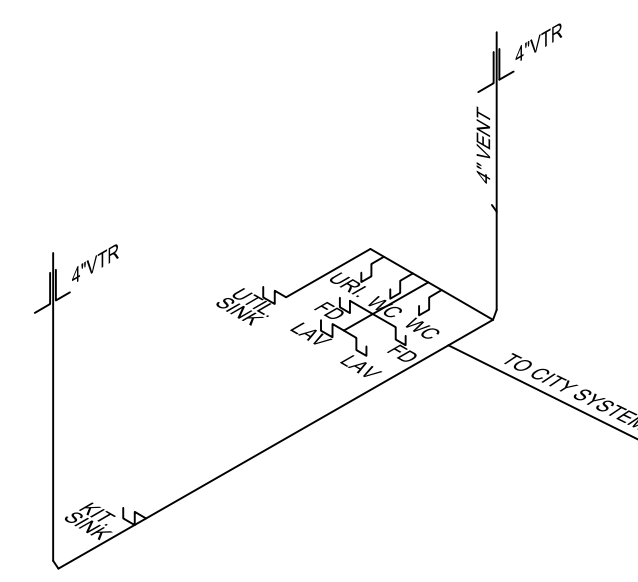
CONDENSING UNIT DETAIL
N.T.S.

HVAC NOTES:

- IT IS THE INTENTION OF THIS HVAC PLAN TO SHOW GENERAL REQUIREMENTS AND LAYOUTS.
- THE WORK CONSISTS OF PROVIDING AND INSTALLING A COMPLETE OPERATING AIR CONDITIONING SYSTEM.
- ALL WORK SHALL BE SUPERVISED BY A LICENSED MECHANICAL CONTRACTOR.
- ALL WORK SHALL COMPLY WITH APPLICABLE CODES INCLUDING THE STANDARD MECHANICAL CODE, NATIONAL ELECTRIC CODE, STATE ENERGY CODE, NFPA REQUIREMENTS, AND OTHER LOCAL CODES.
- THE WORK INDICATED ON THIS PLAN IS GENERALLY DIAGRAMMATIC AND IS INTENDED TO CONVEY THE SCOPE OF WORK AND INDICATE THE GENERAL ARRANGEMENT OF DUCT WORK AND EQUIPMENT, ETC.
- HVAC WORK IS TO BE COORDINATED WITH ELECTRICIANS FOR ELECTRICAL PROVISIONS.
- SYSTEM SHALL BE TRANE OR APPROVED EQUAL.

NOTES:

- RELOCATE HVAC SYSTEM TO STORAGE ROOM.
- RELOCATE HVAC SYSTEM ELECTRICAL SYSTEM TO NEW LOCATION. PROVIDE ALL NEW DUCT WORK.
- EXISTING PLUMBING AND WATER SYSTEM TO BE UPDATED TO NEW LOCATIONS OF ALL DRAINAGE AND WATER CONNECTIONS.
- USE PEX TUBING FOR ALL RE-ROUTED PLUMBING.
- REMOVE FLOOR FOUNDATION TO INSTALL NEW SEWER.



WC = WATER CLOSET AMERICAN STANDARD WHITE, HANDI-CAP, 1.6 GAL. FLUSH, OPEN SEAT.
LAV = LAVATORY AMERICAN STANDARD, HANDI-CAP, SINGLE LEVER STYLE FAUCET, CW CONNECT, HW CAP.
URI = URINAL AMERICAN STANDARD MAYBROOK 1.0 GPF WHITE.

PLUMBING - WASTE RISER
NOT TO SCALE

NOTES:

- FOR PLUMBING FIXTURE ELEVATIONS AND DIMENSIONS SEE RESTROOM DETAILS ON SHEET 11.
- WALLS IN RESTROOMS TO BE TILTON KNOTTY PINE T&G V-GROOVE QUICK-LOCK WALL PLANKS OR APPROVED EQUAL TO BE USED ON INTERIOR WALLS. (COLOR CHOICE TO BE MADE BY OWNER).
- FLOOR IN STORAGE TO BE DALTILE SLATE ATTACHE 12"x24" META DARK GRAY OVERLAY ON TOP OF EXISTING TILE.
- FLOOR IN RESTROOMS TO BE DALTILE SLATE ATTACHE 12"x24" META DARK GRAY OVERLAY ON TOP OF EXISTING TILE.
- HOT WATER PLUMBING IS TO BE PROVIDED TO THE RESTROOM SINKS AND THE MOP SINK IN THE STORAGE ROOM.

DOOR SCHEDULE

3'-0"x6'-8"x1 3/4" SOLID CORE "FG" FLUSH PANEL FILL-IN FIBERGLASS DOOR BY "PEACHTREE DOORS"

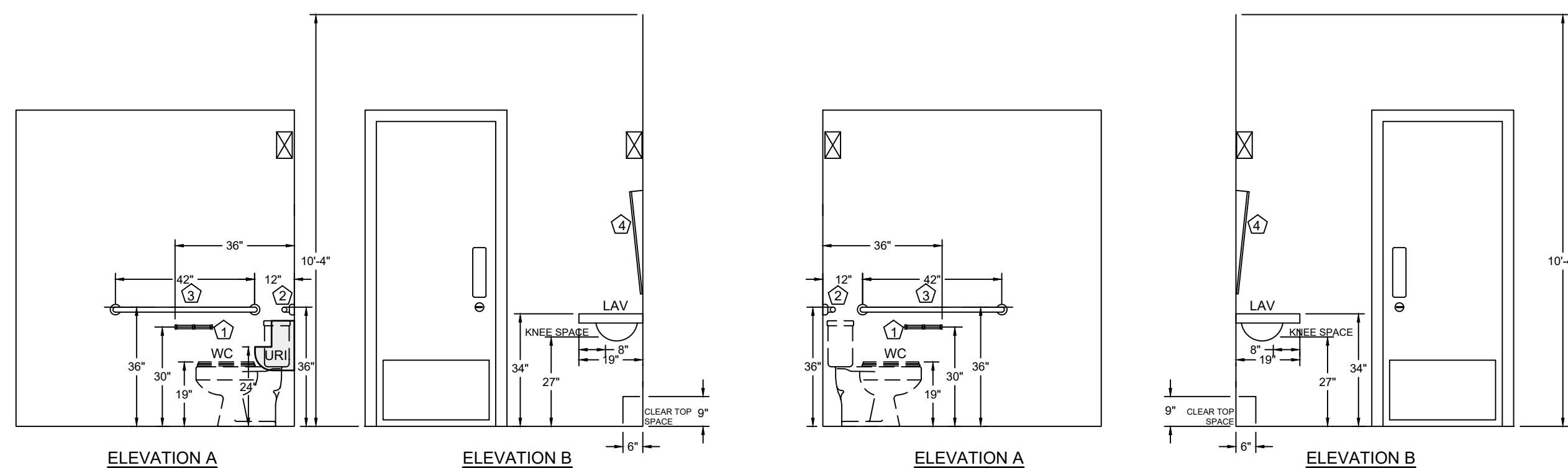
DOOR HARDWARE

THRESHOLD - ALUM. SADDLE - PEMKO MFG. CO.
HINGES - HAGER - BB - STAINLESS STEEL
LOCKSET - SCHLAGE, AD-200 OFFLINE LOCK, PROGRAMMABLE CARD LOCK SYSTEM
PUSH PLATE - IVES, HAGER OR STANLEY
PULL PLATE - SANITGRASP GERMFREE HANDLE
ARMOR PLATE (EACH SIDE) - IVES, HAGER OR STANLEY
CLOSER - LCN "CUSH-N-STOP"
FINISH - US26D OVER BRASS OR STAINLESS STEEL

LIGHTING SCHEDULE

- H.E. WILLIAMS LED LIGHT CAT. No. EGL2-4-L250/850-HIAFR-DRV-UNV
- PROVIDE OCCUPANT SENSOR SWITCH w/ 15 MIN. AUTO SHUTOFF

ID MARK	DESCRIPTION	(BOBRIK #)	MNTG HGT
1	SURFACE MOUNTED TOILET PAPER HOLDER	(S-2740)	SEE ELEV
2	18 gage, STAINLESS STEEL GRAB BARS (36" LONG)	(S-4236)	SEE ELEV
3	18 gage, STAINLESS STEEL GRAB BARS (42" LONG)	(S-4242)	SEE ELEV
4	SURFACE MOUNTED H.C. MIRROR	(S-2936)	SEE ELEV

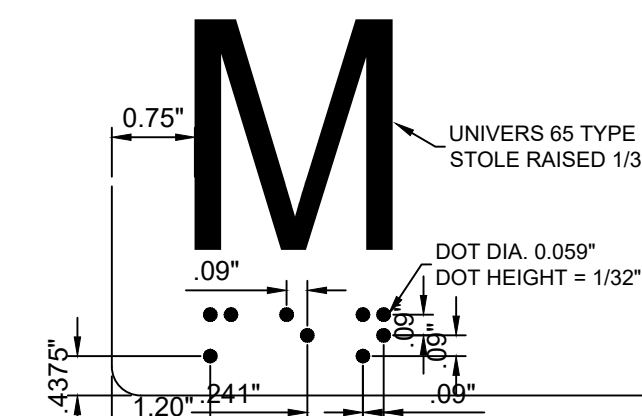


MEN'S RESTROOM

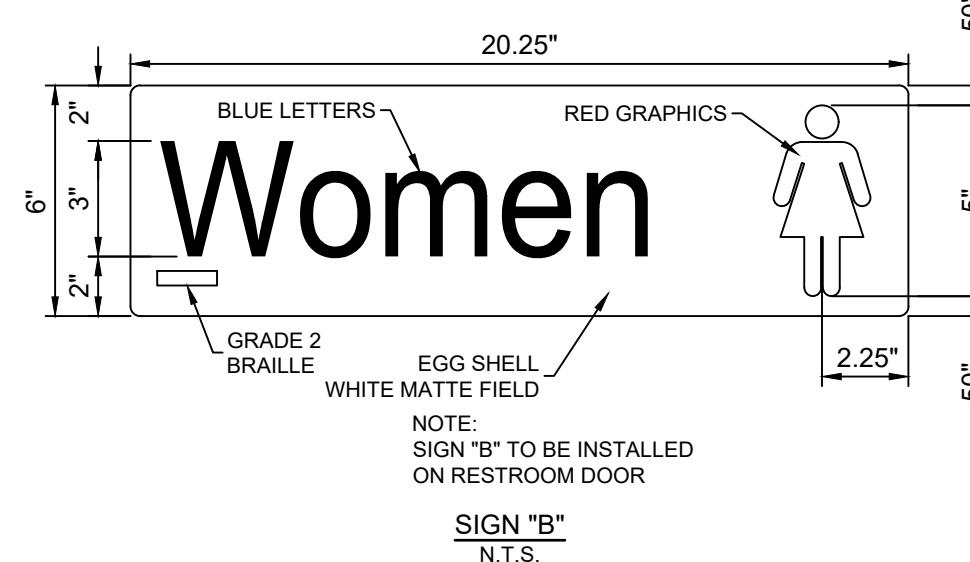
WOMEN'S RESTROOM

- RESTROOM FIXTURE SPECS.**
- WC = WATER CLOSET AMERICAN STANDARD WHITE, HANDI-CAP, 1.6 GAL. FLUSH, OPEN SEAT.
 - LAV = LAVATORY AMERICAN STANDARD, HANDI-CAP, SINGLE LEVER STYLE FAUCET, CW CONNECT, HW CAP.

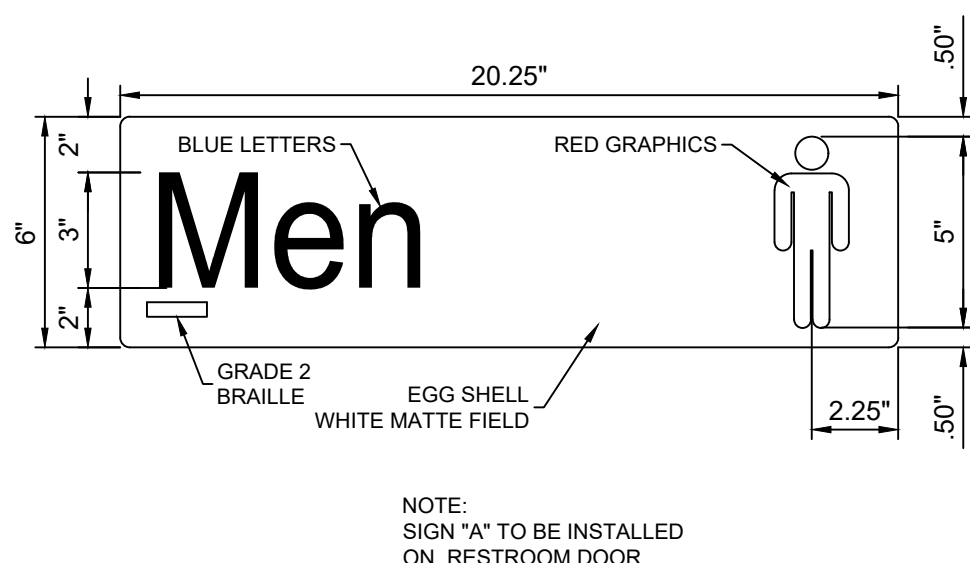
RESTROOM INTERIOR ELEVATIONS
SCALE: 1" = 3'



GRADE 2 BRAILLE DETAIL
N.T.S.



SIGN "B"
N.T.S.



SIGN "A"
N.T.S.

RESTROOM DOOR SIGN DETAIL
NOT TO SCALE



SPECIFICATIONS:
AMERICAN STANDARD MAYBROOK 1.0 GPF URINAL IN WHITE OR APPROVED EQUAL. CONTRACTOR TO SUBMIT SHOP DRAWING FOR CITY APPROVAL.

URINAL DETAIL
NOT TO SCALE

Date: 12/20/24 2:17 PM File: P:\2024\Callaway\Bldg Improvements\11_Civil\3D\Fabric\Drawings\2024\RS18\2024_01.dwg

REV	DATE	BY	REVISIONS

SCALE: AS NOTED
DESIGNED BY: CBF
DRAWN BY: CBG
REVIEWED BY: CBF
ISSUE DATE: DECEMBER 2024
ACAD FILE NAME: 25043_E1.dwg

PANHANDLE ENGINEERING
ENVIRONMENTAL ENGINEERS • CIVIL ENGINEERS • LAND PLANNERS
600 Ohio Avenue Lynn Haven, Florida 32444
(850)763-5200 www.panhandleengineering.com

RESTROOM DETAILS
CALLAWAY COMMUNITY CENTER
CITY OF CALLAWAY, FL

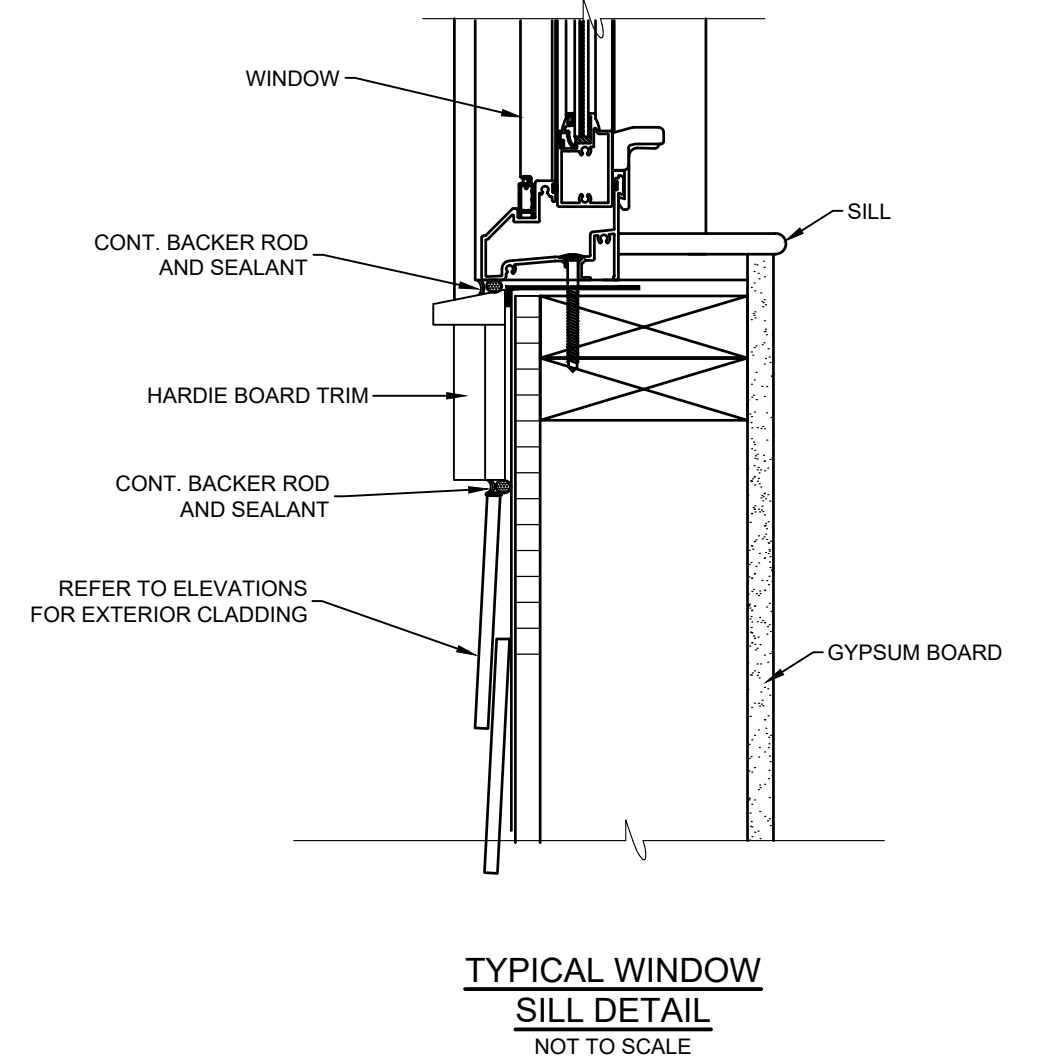
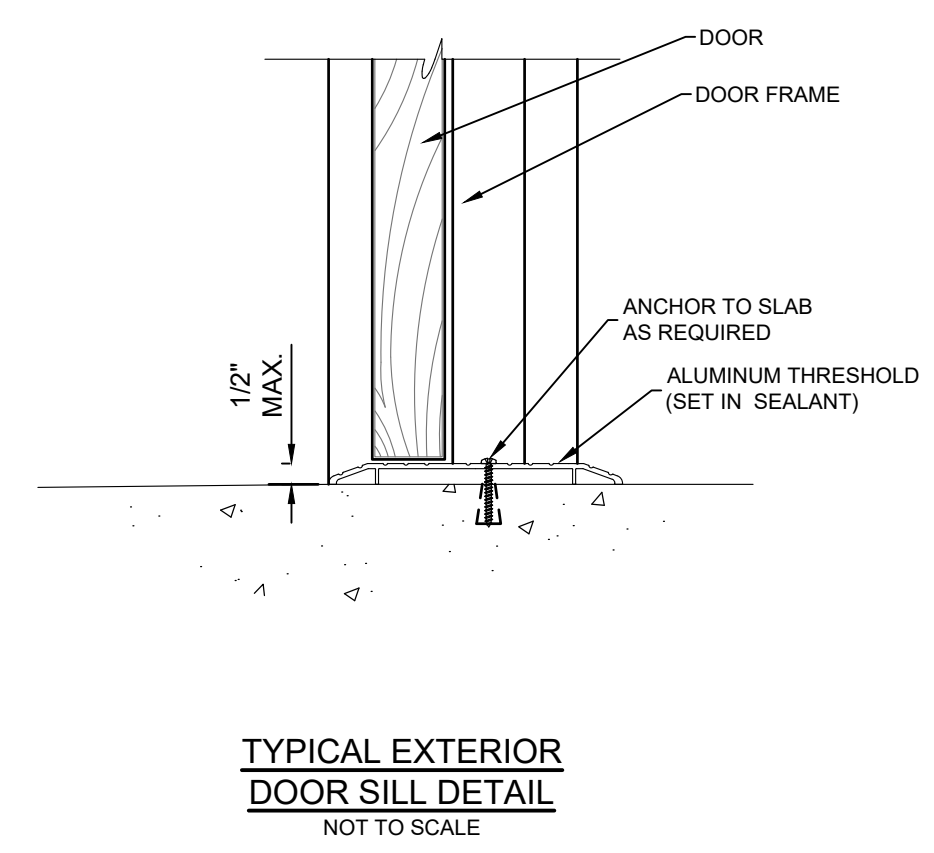
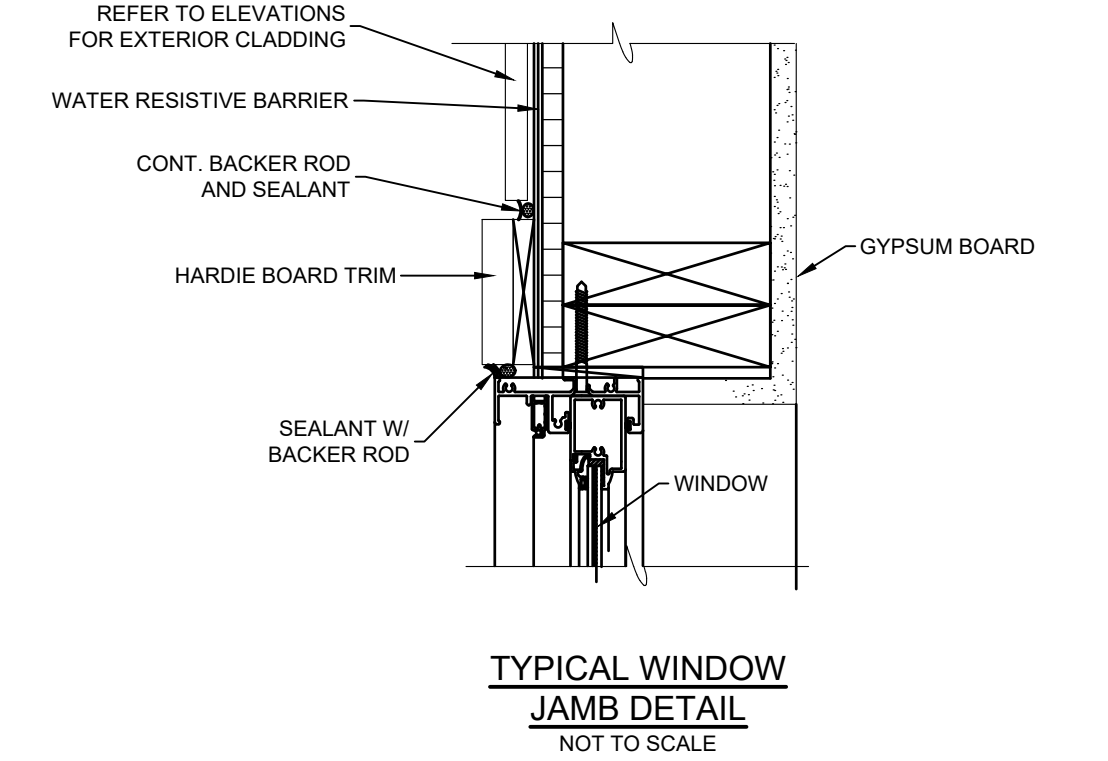
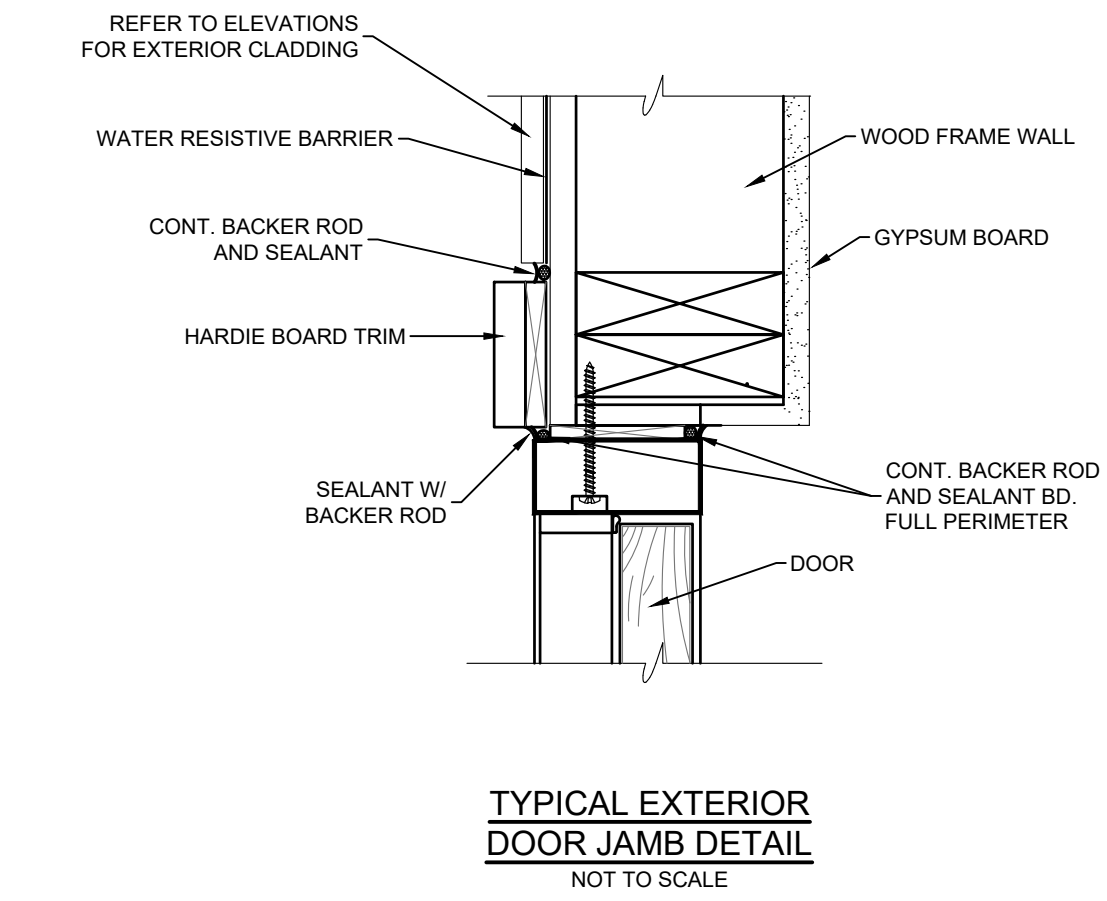
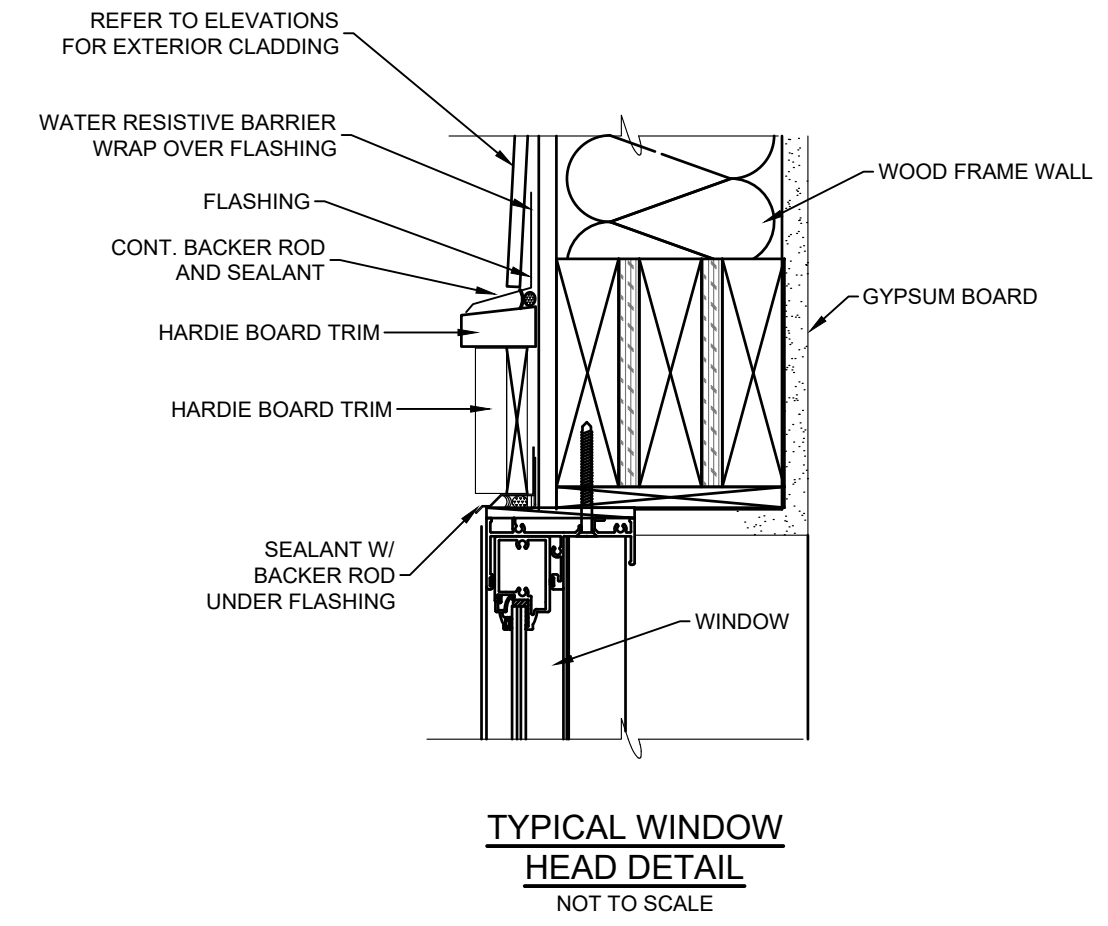
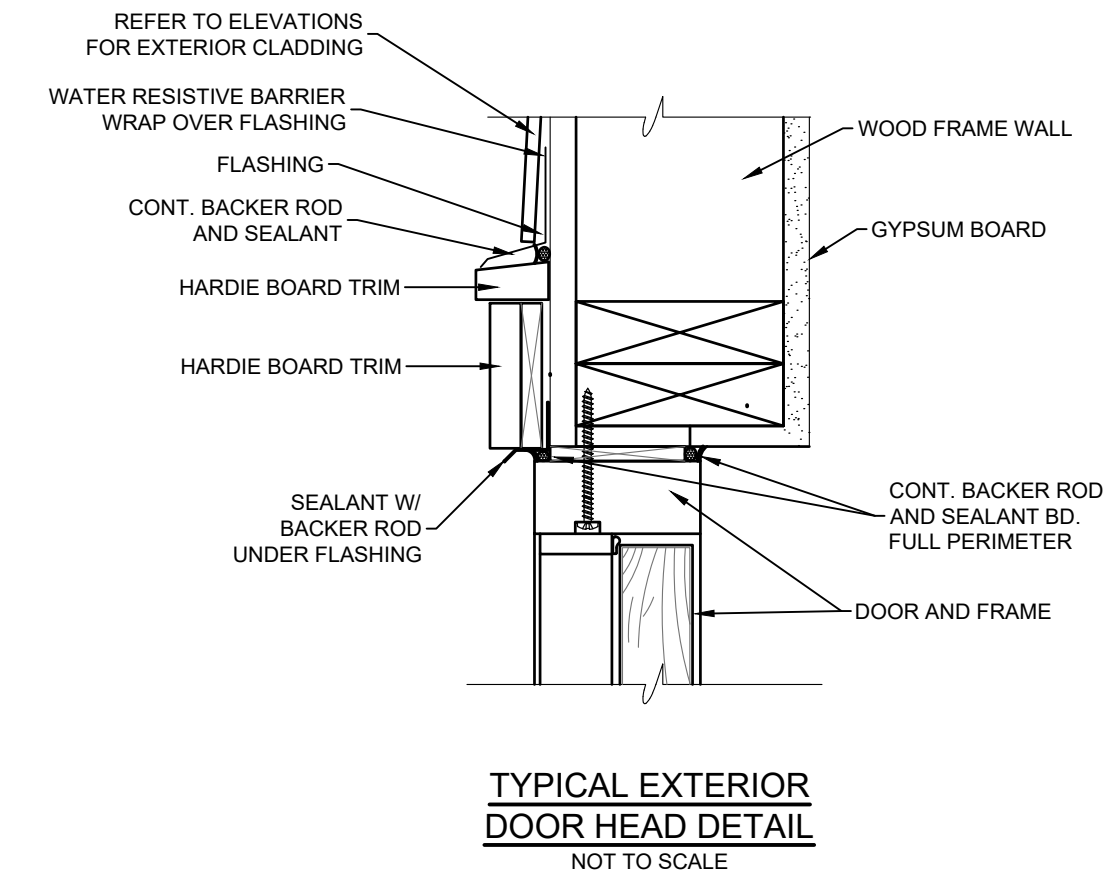
James H. Slonina, P.E. 39197
Christopher B. Forehand, P.E. 58028
J. Doug Cook, P.E. 66556
Walt Z. Lewis, P.E. 64236
William B. Thompson, P.E. 95046

9-Dec-24

SHEET NUMBER
13

PROJECT NUMBER
26043

26043 CALLAWAY COMMUNITY CENTER RESTROOM DETAILS Sheet 13



NOTE:
 WINDOW AND DOOR DETAILS ARE FOR DESIGN INTENT ONLY - MODIFY AS REQUIRED TO MATCH ACTUAL WINDOW/DOOR MANUFACTURER DETAILS. INSTALL PER MANUFACTURER'S DETAILS AND PROVIDE ANCHORS PER FBC.

REV	DATE	BY	REVISIONS

SCALE: AS NOTED
DESIGNED BY: CBF
DRAWN BY: CBG
REVIEWED BY: CBF
ISSUE DATE: DECEMBER 2024
ACAD FILE NAME: 26043_E1.dwg

PANHANDLE ENGINEERING
 ENVIRONMENTAL ENGINEERS • CIVIL ENGINEERS • LAND PLANNERS
 600 Ohio Avenue Lynn Haven, Florida 32444
 (850)763-5200 www.panhandleengineering.com

**CONSTRUCTION DETAILS
 CALLAWAY COMMUNITY CENTER
 CITY OF CALLAWAY, FL**

James H. Slonina, P.E. 39197
 Christopher B. Forehand, P.E. 58028
 J. Doug Cook, P.E. 66556
 Watt Z. Lewis, P.E. 84236
 William B. Thompson, P.E. 95046

9-Dec-24

DPR CERTIFICATION #EB-7806

SHEET NUMBER	14
PROJECT NUMBER	26043

Date: 12/20/24 2:17 PM File: P:\26043 Callaway Blg Improvements\1. Civil\3DFabric\Drawings\2 DESIGN\26043_E1.dwg

26043 CALLAWAY COMMUNITY CENTER CONSTRUCTION DETAILS Sheet 14