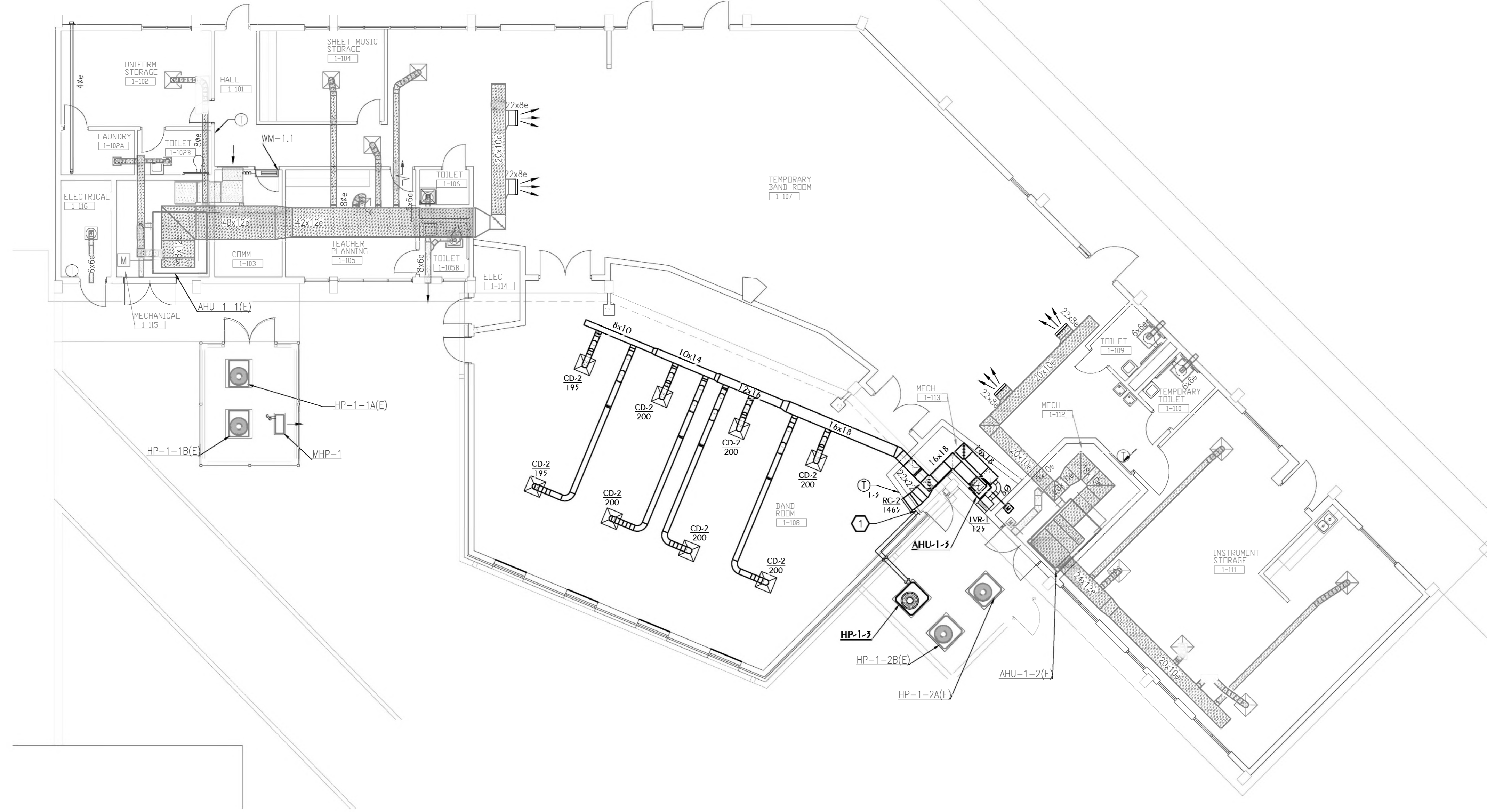


CAMPUS KEY PLAN

**SHEET NOTES**

① ROUTE REFRIGERANT TO AHU-1-3.



**2 HVAC NEW WORK PLAN - BUILDING 1**  
SCALE: 1/8" = 1'-0"

**AIR DEVICE SCHEDULE**

MARK	MAX AIRFLOW CFM	AIR DEVICE SIZE	DUCT CONNECTION SIZE	TITUS MODEL
CD-1 CFM	80	9x9	60	TDC
CD-2 CFM	245	12x12	80	TDC
CD-3 CFM	350	12x12	100	TDC
CD-4 CFM	470	15x15	120	TDC
SWC-1 CFM	600	22x8	22x8	272FL
<b>RC, EC, SC, TC, RR, ER</b>				
xx-1 CFM	450	12x12	12x12	350FL
xx-2 CFM	1705	22x22	22x22	350FL
xx-3 CFM	2850	46x22	46x22	350FL

- NOTES:  
 1. MAX NC=20  
 2. PROVIDE 2x2 LAY IN PANEL FOR AIR DEVICES IN LAY IN CEILINGS.  
 3. PROVIDE BEVELED MOUNTING FRAME FOR CEILING DIFFUSERS IN HARD CEILINGS.  
 4. PROVIDE FLAT MOUNTING FRAME FOR GRILLES LOCATED IN HARD CEILINGS.  
 5. PAINT ALL DUCT VISIBLE THROUGH GRILLES FLAT BLACK.  
 6. PROVIDE OPPOSED BLADE DAMPERS FOR ALL CEILING DIFFUSERS AND SIDEWALL GRILLES.

**LOUVER SCHEDULE**

MARK	AIRFLOW CFM (MAX)	LOUVER SIZE (WxH) INCHES	FREE AREA FT² (MIN)	MAX PRESSURE DROP (IN. W.G.)
LVR-1 CFM	300	17x12	0.56	0.10

1. PROVIDE GREENHECK EHV-9010 (OR EQUAL) EXTRUDED ALUMINUM WIND-DRIVEN RAIN RESISTANT, STATIONARY LOUVER WITH BIRDSCREEN AND FLORIDA PRODUCT APPROVAL.  
 2. FINISH TO BE SELECTED BY ARCHITECT FROM MANUFACTURER'S STANDARD COLORS.  
 3. REFER TO ARCHITECTURAL PLANS FOR MOUNTING HEIGHTS.

**AIR PURIFICATION EQUIPMENT SCHEDULE**

ZONE	SUPPLY CFM	OA CFM	PRESS. IN. W.C.	BASIS OF DESIGN	MODEL	QUANTITY	ELECTRICAL VOLTS/PHASE	WATTS	NOTES
1	1590	125	<0.01	CPS	DM-2	1	24 VAC	11	1,2,3,4

1. CPS = GLOBAL PLASMA SOLUTIONS.  
 2. PROVIDE BASIS OF DESIGN OR APPROVED EQUAL.  
 3. BI-POLAR IONIZATION SYSTEMS REQUIRING PERISHABLE GLASS TUBES ARE NOT ACCEPTABLE.  
 4. MANUFACTURER MUST PASS UL-867-2007 OZONE CHAMBER TESTING BY EITHER UL OR ETL.

**SPLIT SYSTEM HEAT PUMP SCHEDULE**

UNIT AHU/HP	BASIS OF DESIGN	MODEL (AHU/HP)	SA (CFM)	OA (CFM)	ESP (IN. H2O)	FAN (HP)	COOLING MAT* (DB/WB)	OAT* (DB/WB)	TOTAL (BTU/H)	SENSIBLE (BTU/H)	SEER2	HEATING MAT * (DB)	OAT * (DB)	TOTAL (BTU/H)	HSPF2	SUPPL. HEAT (KW)	AHU ELECTRICAL VOLTS/PHASE	MCA	MOP	HP ELECTRICAL VOLTS/PHASE	MCA	MOP	NOTES
1-3	TRANE	5TEM6D06A4V1/5TWR3048A1	1590	125	0.4	3/4	74/62.8	95.0/78.0	44200	34200	16	60	25	22600	8.5	8.0	208/1	52	60	208/1	25	40	1,2,3,4,5,6,7,8

1. PROVIDE 2" 30% FILTERS AND FILTER HOUSING SHOWN IN DETAILS.  
 2. EFFICIENCIES IN ACCORDANCE WITH ARI STANDARD 210/240.  
 3. ESP DOES NOT INCLUDE FILTER, CASING, ETC.  
 4. PROVIDE CONTROL KIT TO INCLUDE BLOWER CONTACTOR OR STARTER, TRANSFORMER, ELECTRIC HEATER INTERLOCKS. ELECTRICAL SERVICE SHALL BE A SINGLE POINT OF CONNECTION.  
 5. PROVIDE THERMAL EXPANSION VALVES, DIRECT DRIVE AHU FAN.  
 7. COOLING CAPACITY IS NET AND DOES NOT INCLUDE FAN HEAT.  
 8. PROVIDE UNIT MOUNTED CIRCUIT BREAKER FOR INDOOR AIR HANDLERS.

**REVISIONS:**

NO.	DESCRIPTION	DRAWN	CHECKED	DATE
3	ASH-03 / SD	YUJ	KAJ	11/01/24
3	ASH-03 / DD	YUJ	KAJ	11/20/24
3	ASH-03 / BID SET	YUJ	KAJ	12/20/24

**PHASE:**

	DRAWN	CHECKED	DATE
SCHEMATIC DESIGN			03/22/21
REVISED SCHEMATIC			05/06/21
DESIGN DEVELOPMENT			07/22/21
CONSTRUCTION DOCUMENTS			11/19/21
BID DOCUMENTS	ECB	KAJ	02/25/22
CONSOLIDATED DOCUMENTS	ECB	KAJ	04/08/22
FDEM SUBMITTAL	ECB	KAJ	10/14/22
PERMIT SET	ECB	KAJ	11/17/22
BUILDING 3 PACKAGE	KAJ	KAJ	02/13/23

**JRA ARCHITECTS** 2211 THOMAS DRIVE, SUITE 100  
 PANAMA CITY BEACH, FL  
 PHONE: (850) 236-9832  
 Commission Number: 20783

**WATFORD ENGINEERING**  
 4402 Citron Street, Marianna, Florida 32446 Field Office of Authorization: 2720  
 605 S.W. 34th Street, Project Number: 2025-040 David N. Watford, PE Florida License: 3659

**PROJECT:**  
 MOWAT MIDDLE SCHOOL ADDITIONS AND RENOVATIONS PHASE II  
 BAY DISTRICT SCHOOLS  
 BAY COUNTY, FLORIDA

**SHEET TITLE:**  
 HYAC PLAN - BUILDING 1

**SHEET NUMBER:**  
 M1.1