

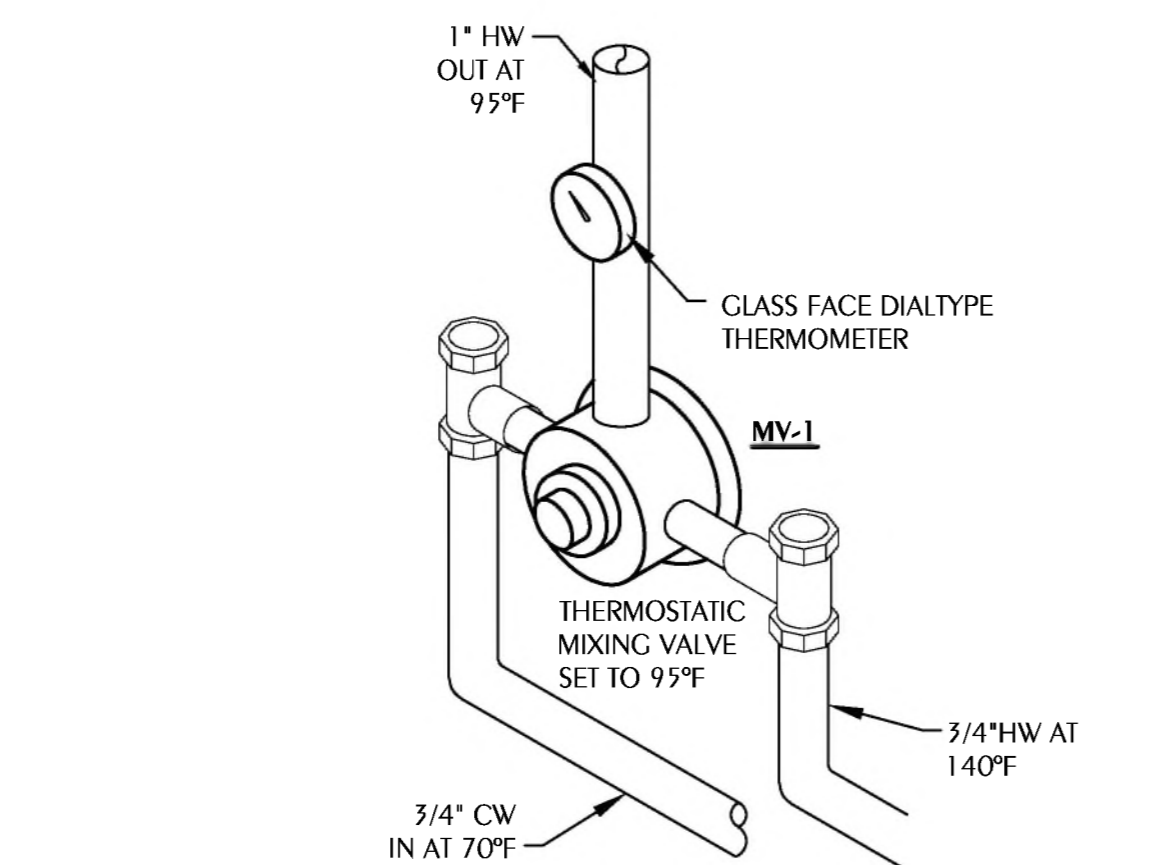
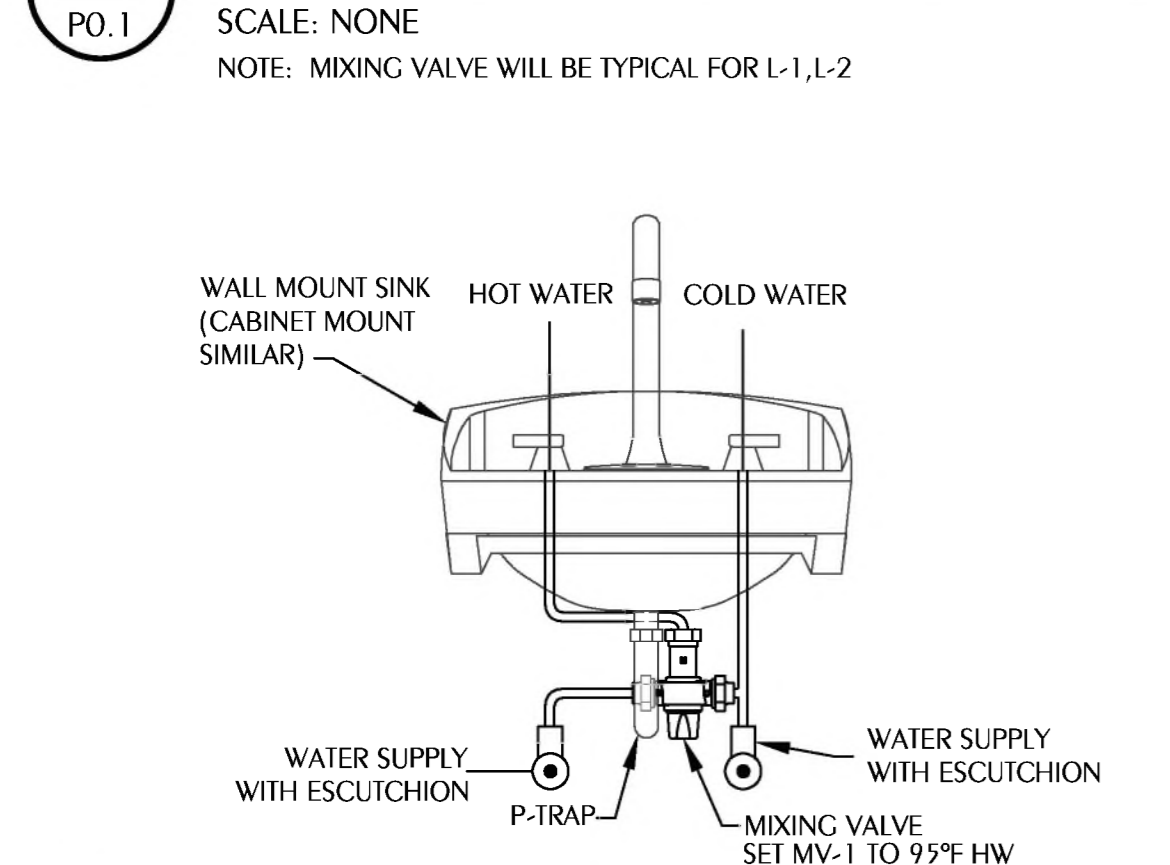
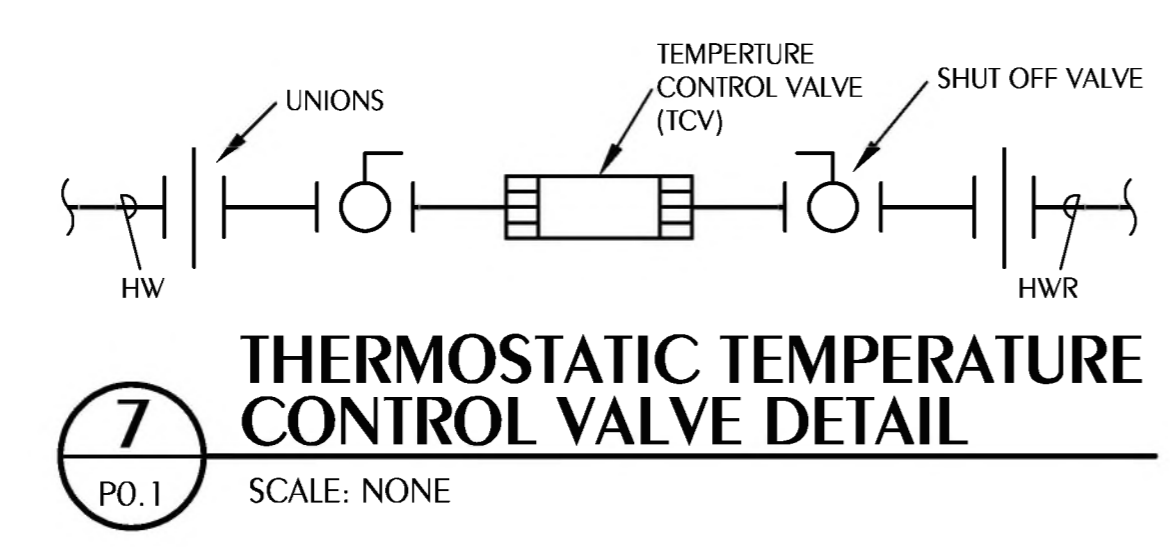
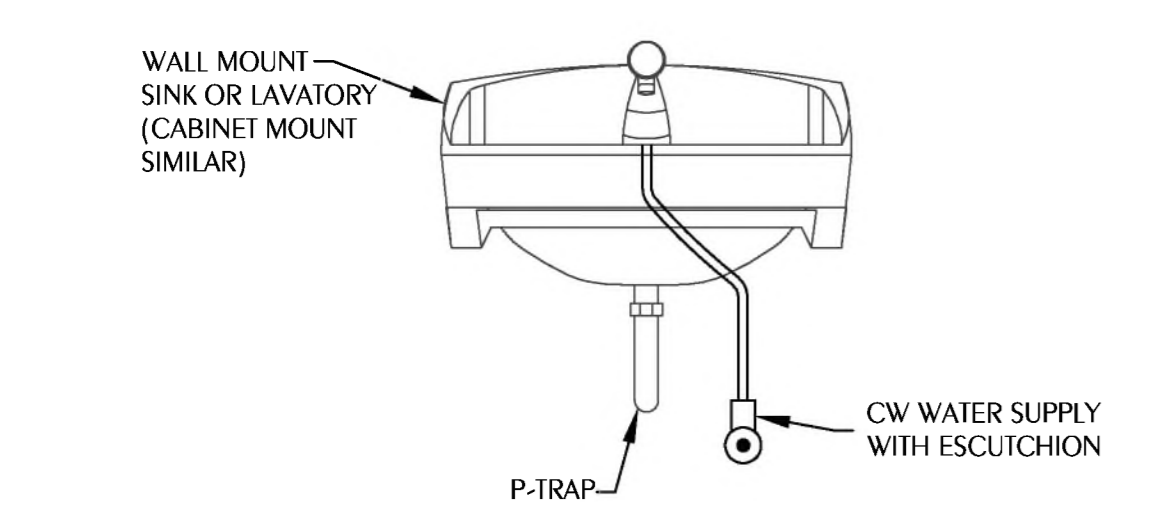
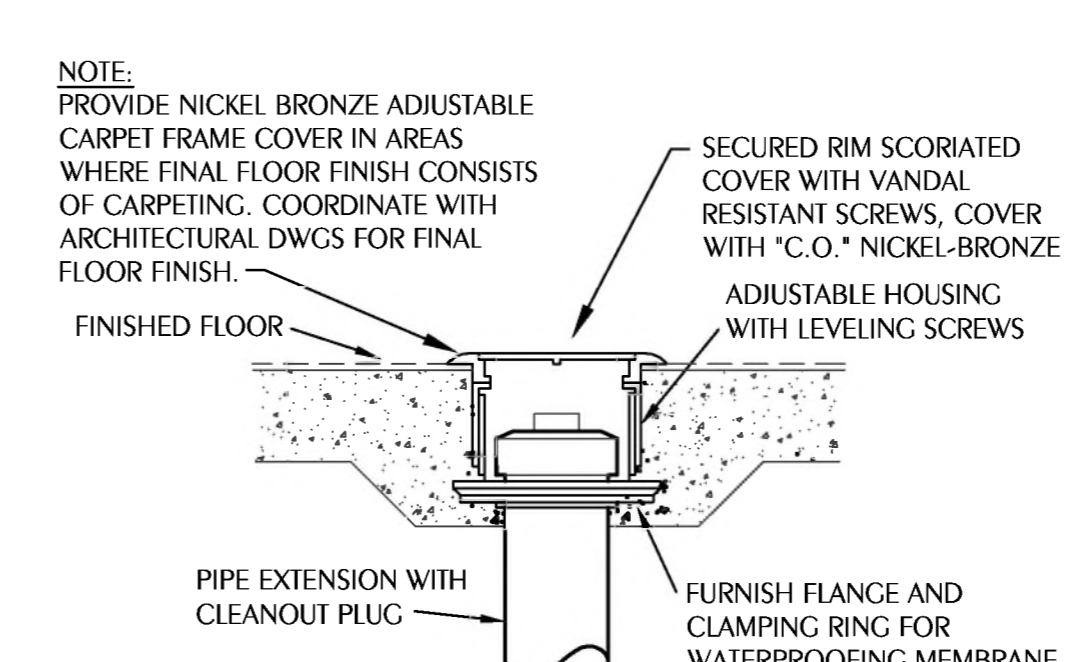
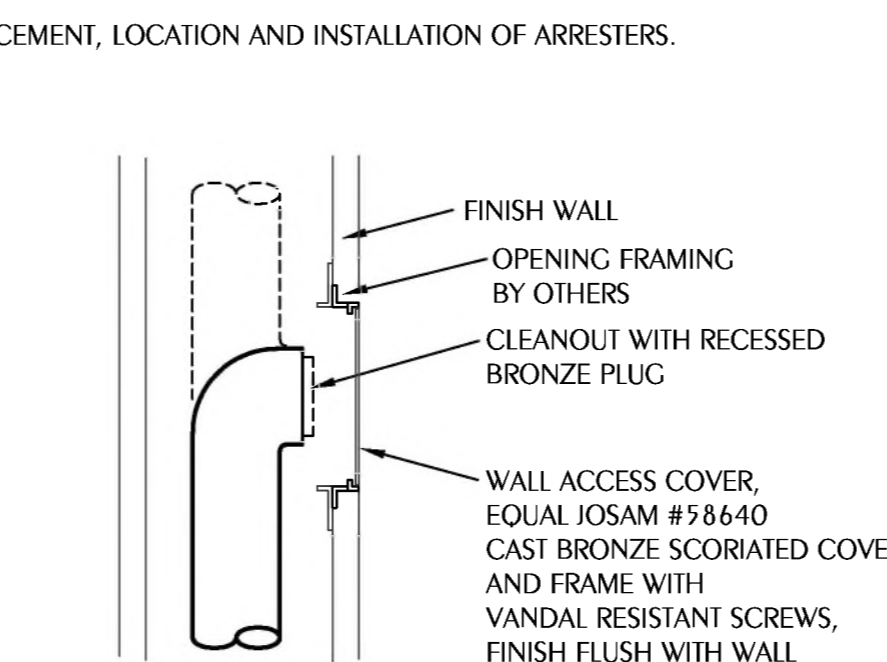
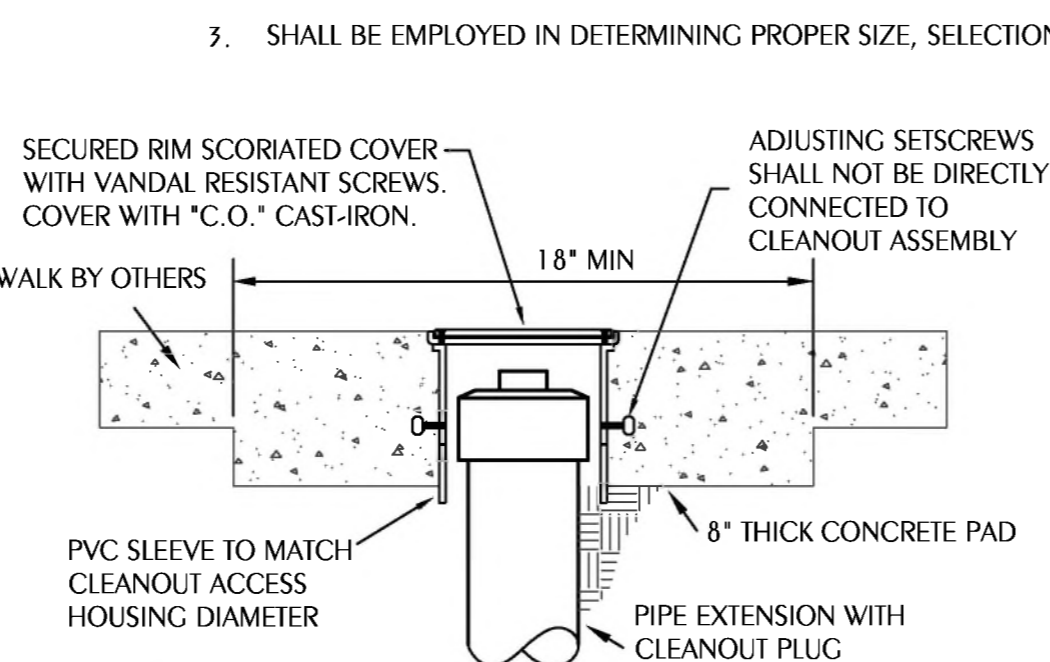
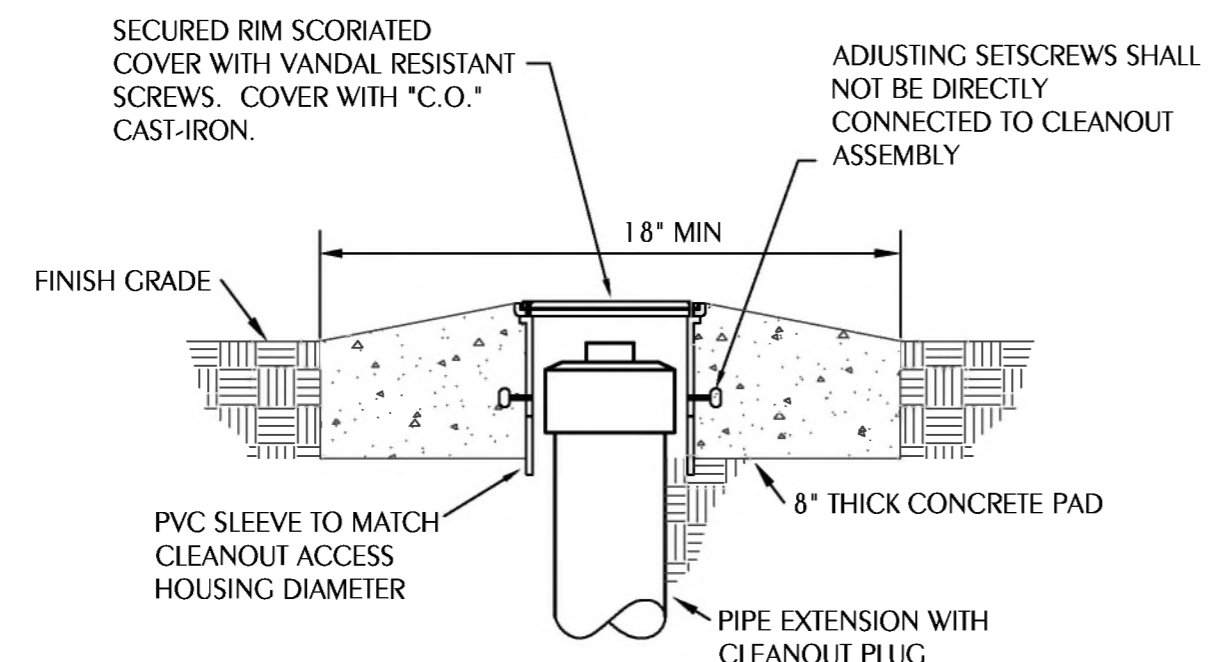
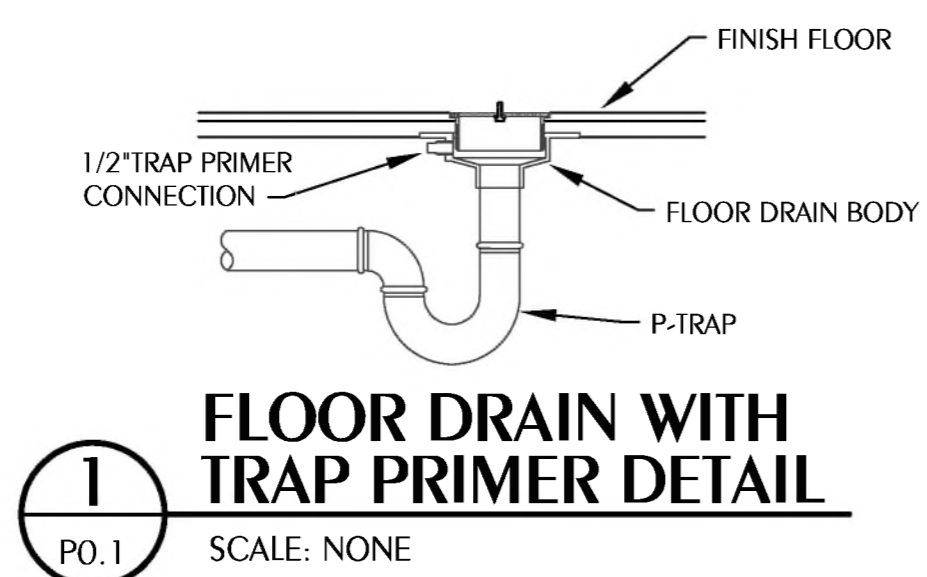
**LEGEND**

	S or W	SOIL OR WASTE PIPING
	V	VENT PIPING
	CW	GREASE WASTE PIPING
	CV	GREASE VENT PIPING
	CW	COLD WATER SUPPLY PIPING
	HW	HOT WATER SUPPLY PIPING
	HWR	HOT WATER RETURN PIPING
	G	GAS PIPING
	CV	GATE VALVE
	CV	CHECK VALVE
	BV	BALL VALVE
	BV	VERTICAL BALL VALVE
	HB	HOSE BIBB
	WH	WALL HYDRANT
	CO	CLEANOUT TO FLOOR
	FD	FLOOR DRAIN
	FD(NS)	FLOOR DRAIN - (NS) INDICATES NO FLOOR SLOPE TO FLOOR DRAIN
	COIG	CLEANOUT TO GRADE
	UNION	UNION
	VIR	VENT THRU ROOF
	SHEET NOTE	SHEET NOTE
	POINT OF CONNECTION TO EXISTING	POINT OF CONNECTION TO EXISTING
	SOLENOID VALVE	SOLENOID VALVE

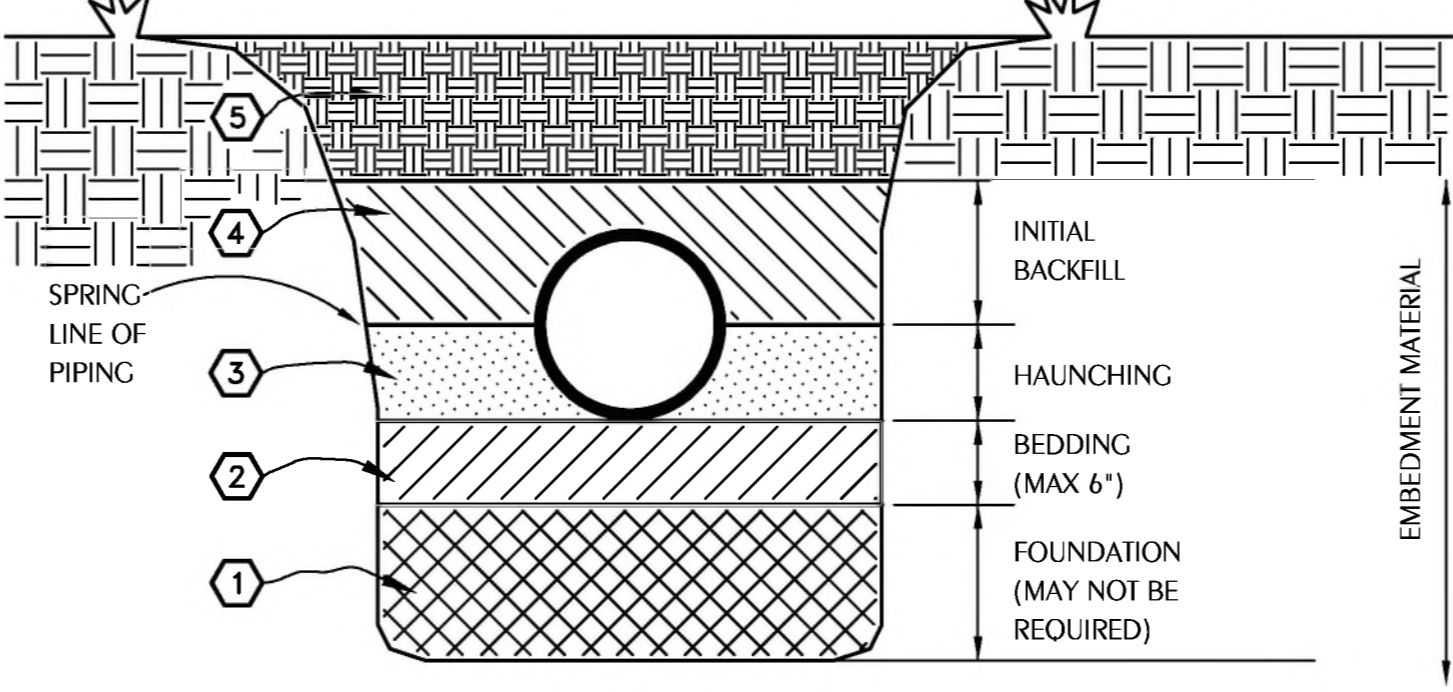
WC	WATER CLOSET
TP	TRAP PRIMER
EW	ELECTRIC WATER HEATER
WHA	WATER HAMMER ARRESTOR TYPE A
WHB	WATER HAMMER ARRESTOR TYPE B
WHC	WATER HAMMER ARRESTOR TYPE C
L	LAVATORY
SK	SINK
MR	MOP RECEPTOR
KW	KILOWATT
(E)	EXISTING
UR	URINAL
CP	CIRCULATORY PUMP(INLINE)
TCV	THERMOSTATIC CONTROL VALVE
COIS	CLEANOUT TO SIDEWALK

**GENERAL NOTES**

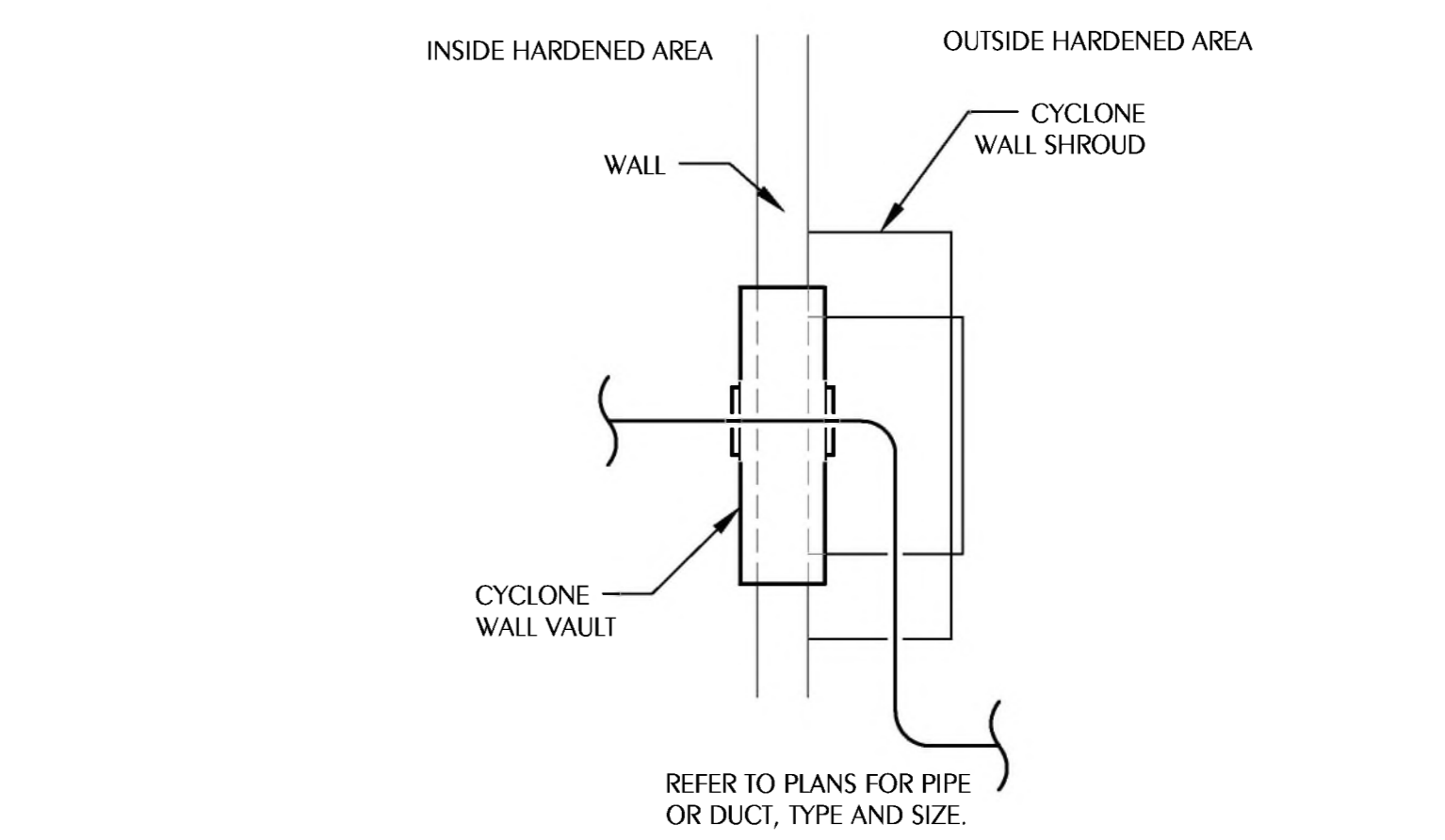
- COORDINATE ALL PIPING WITH DUCTWORK SHOP DRAWINGS AND EXISTING CONDITIONS. ROUTE PIPING AS REQUIRED TO AVOID CONFLICTS.
- PRIOR TO START OF ANY WORK, COORDINATE SANITARY SEWER AND POTABLE WATER PIPING WITH CIVIL DRAWINGS.
- FIELD VERIFY PIPE INVERTS PRIOR TO LAYING OUT SANITARY SEWER PIPING.
- ALL PIPING PASSING THROUGH ANY WALL SHALL HAVE A SLEEVE PER SPECIFICATIONS.
- ALL PIPING PASSING THROUGH FIRE-RATED WALLS SHALL HAVE A FIRE-RATED SLEEVE PER SPECIFICATIONS. ALL PIPING PENETRATIONS THROUGH WALLS OR FLOORS SHALL BE SEALED TO EQUAL THE RATING OF THE WALLS OR FLOORS.
- ALL PIPING INDICATED IS ABOVE THE CEILING EXCEPT THE OBVIOUS SANITARY SOIL, WASTE, VENT AND POTABLE WATER PIPING BELOW FLOOR OR GRADE.
- SEE TOILET ROOM ELEVATIONS ON ARCHITECTURAL DRAWINGS FOR PLUMBING FIXTURE MOUNTING HEIGHT.
- COORDINATE EXACT LOCATION OF ALL EXTERIOR WALL HYDRANTS WITH ARCHITECTURAL DRAWINGS.
- UNDER SLAB SOIL, WASTE AND VENT PIPING PASSING TO UNDERSIDE OR THROUGH FOUNDATION FOOTING, WALL OR GRADE BEAM SHALL BE PROVIDED WITH A RELIEVING ARCH OR PIPE SLEEVE 2 (TWO) PIPE SIZES GREATER THAN PIPE SIZE INDICATED ON PLANS. COORDINATE FINAL PIPE ROUTING AND LAYOUT WITH STRUCTURAL DRAWINGS.
- PRIOR TO SUBSTANTIAL COMPLETION OF NEW AND ALTERED WORK AREAS, CONTRACTOR SHALL HAVE SANITARY PLUMBING SYSTEM CLEARED OF DEBRIS OR ANY MATTER THAT WOULD INTERFERE OR PREVENT ADEQUATE CONVEYANCE OF MATERIALS FROM MOVING THROUGH AND TERMINATING INTO BUILDING OR PUBLIC DISPOSAL FACILITIES.
- ALL (VIR'S) VENT THRU ROOF PENETRATIONS INDICATED ON PLANS ARE PRELIMINARY. FINAL LOCATIONS SHALL BE COORDINATED WITH ALL TRADES. ALL VIRS SHALL BE A MINIMUM OF 10'-0" FROM ALL FRESH AIR INTAKE OPENINGS.
- ALL TRAP PRIMERS AND DOMESTIC WATER ISOLATION VALVES SHALL BE ACCESSIBLE. TRAP PRIMERS LOCATED IN THE VICINITY OF WATER CLOSETS SHALL BE ACTIVATED BY WATER CLOSET USAGE. ISOLATION VALVES SHALL BE OF THE QUARTER TURN BALL OR GATE TYPE.
- CONTRACTOR SHALL DEVELOP AND SUBMIT COORDINATION SHOP DRAWINGS WHICH IDENTIFY ROUTING OF PLUMBING PIPE AND LOCATION OF EQUIPMENT. SHOP DRAWINGS SHALL INDICATE COORDINATION WITH THE WORK OF OTHER TRADES.



- A FOUNDATION MAY BE REQUIRED IN VERY POOR SOIL CONDITIONS.
  - BEDDING IS REQUIRED PRIMARILY TO BRING THE TRENCH BOTTOM UP TO GRADE. BEDDING MATERIALS SHALL PROVIDE A UNIFORM AND ADEQUATE LONGITUDINAL SUPPORT UNDER THE PIPE. IN DRY SOIL CONDITIONS, CLASS II OR III MATERIAL SHALL BE HAND PLACED IN 4'-6" LIGHTLY COMPACTED UNIFORM AND NOT FINER THAN THE FOUNDATION MATERIAL. IN WET CONDITIONS, CLASS I, II OR III MATERIAL SHALL BE HAND PLACED IN 4'-6" UNIFORM AND NOT FINER THAN THE FOUNDATION MATERIAL. WHEN UTILIZING CLASS I MATERIAL, SUFFICIENT AMOUNTS OF CLASS II OR III MATERIAL SHALL BE ADDED TO FILL ALL VOIDS CREATED BY THE USE OF CLASS I MATERIAL.
  - HAUNCHING MATERIAL SHALL BE HAND PLACED TO THE SPRINGLINE OF THE PIPE. CLASS II OR III MATERIAL SHALL BE CONSOLIDATED UNDER THE PIPE AND HAND TAMPED TO PROVIDE ADEQUATE SIDE SUPPORT.
  - INITIAL BACKFILL MATERIAL SHALL BE CLASS II OR III. IT SHALL BE PLACED WITHIN 24-30" ABOVE THE TOP OF THE PIPE AND TAMPED BY A PORTABLE VIBRATOR. FINAL BACKFILL MATERIAL MAY BE MACHINE PLACED. THE MATERIAL SHALL BE CLASS II OR III MATERIAL. CLASS IV MATERIAL MAY BE INSTALLED OUTSIDE OF ROADWAY.
  - FINAL BACKFILL UNDER ROADWAYS MAY REQUIRE SPECIAL COMPACTION AND DENSITY TESTS. A MINIMUM OF 70% OF COVER OVER THE TOP OF THE PIPE SHALL BE PROVIDED BEFORE THE TRENCH IS WHEEL-LOADED.
- NOTE: ALL EMBEDMENT MATERIALS SHALL BE NO LESS THAN 95% OF MAXIMUM DENSITY. LABORATORY TESTING OF THE SOIL WILL BE REQUIRED. THIS PROCEDURE SHALL BE REQUIRED ON ALL INSTALLATIONS. ALL TRENCHING, EXCAVATION, AND BACKFILLING SHALL BE IN ACCORDANCE WITH 2020 FLORIDA PLUMBING CODE.



- EMBEDMENT MATERIALS**
- CLASS I: ANGULAR, 1/4"-1-1/2", GRADED STONE, INCLUDING A NUMBER OF FILL MATERIALS THAT HAVE REGIONAL SIGNIFICANCE SUCH AS CORAL, SLAG, CINDERS, CRUSHED STONE AND CRUSHED SHELLS.
  - CLASS II: COARSE SANDS AND GRAVELS WITH MAXIMUM PARTICLE SIZE OF 1-1/2" INCLUDING VARIOUS GRADED SANDS AND GRAVELS CONTAINING SMALL PERCENTAGES OF FINES, GENERALLY GRANULAR AND NON-COHESIVE, EITHER WET OR DRY. SOIL TYPES CW, CP, SW, AND SP ARE INCLUDED IN THIS CLASS.
  - CLASS III: FINE SAND AND CLAY GRAVELS, INCLUDING FINE SANDS, SAND-CLAY MIXTURES AND GRAVEL-CLAY MIXTURES. SOIL TYPES CM, CC, SM, AND SC ARE INCLUDED IN THIS CLASS.
  - CLASS IV: SILT, SILTY CLAYS, AND CLAYS, INCLUDING INORGANIC CLAYS AND SILT OF MEDIUM TO HIGH PLASTICITY AND LIQUID LIMITS. SOIL TYPES MH, MI, CH, AND CL ARE INCLUDED IN THIS CLASS. THESE MATERIALS ARE NOT TO BE USED FOR BEDDING, HAUNCHING, OR INITIAL BACKFILL.
  - CLASS V: THIS CLASS INCLUDES THE ORGANIC SOILS, AS WELL AS SOILS CONTAINING FROZEN EARTH, DEBRIS, ROCKS LARGER THAN 1-1/2" IN DIAMETER AND OTHER FOREIGN MATERIALS. THESE MATERIALS ARE NOT TO BE USED FOR BEDDING, HAUNCHING, OR INITIAL BACKFILL.



**PLUMBING FIXTURE SCHEDULE**

MARK	FIXTURE	PIPE SIZES-INCHES				REMARKS
		CW	HW	W	G	
WC-1	WATER CLOSET (ADULT & MIDDLE SCHOOL HANDICAP, MANUAL)	1	-	3	-	HANDICAP HEIGHT @ 17", FLOOR MOUNT, ELONGATED BOWL, 1.5" TOP SPUD, MANUAL FLUSH VALVE, 1.28 CPF
WC-2	WATER CLOSET (STANDARD, MANUAL)	1	-	3	-	STANDARD HEIGHT @ 15", FLOOR MOUNT, ELONGATED BOWL, 1.5" TOP SPUD, MANUAL FLUSH VALVE 1.28 CPF
UR-1	URINAL (HANDICAP, MANUAL)	3/4	-	2	-	WALL MOUNT, CHAIR CARRIER, 0.125 CPF MANUAL FLUSH VALVE, 3/4" TOP SPUD, COORDINATE WITH ARCH. DWCS
UR-2	URINAL (STANDARD, MANUAL)	3/4	-	2	-	WALL MOUNT, CHAIR CARRIER, 0.125 CPF MANUAL FLUSH VALVE, 3/4" TOP SPUD, COORDINATE WITH ARCH. DWCS
L-1	LAVATORY (HANDICAP, 20X18)	3/8	-	1-1/4	-	WALL MOUNT, CHAIR CARRIER, VITREOUS CHINA, CENTER HOLE, INSULATION KIT, METERING FAUCET, PUSH BUTTON, 0.5 GPM, P-TRAP, OFFSET TAILPIECE, 3/8IPS x 1/2OD ANGLE STOPS & FLEXIBLE COPPER RISER
L-2	LAVATORY (STANDARD, 20X18)	3/8	-	1-1/4	-	WALL MOUNT, CHAIR CARRIER, VITREOUS CHINA, CENTER HOLE, INSULATION KIT, METERING FAUCET, PUSH BUTTON, 0.5 GPM, P-TRAP, OFFSET TAILPIECE, 3/8IPS x 1/2OD ANGLE STOPS & FLEXIBLE COPPER RISER
L-3	LAVATORY (HANDICAP, 20X18)	3/8	3/8	1-1/4	-	WALL MOUNT, CHAIR CARRIER, VITREOUS CHINA, 8" CENTERS, INSULATION KIT, MIXING VALVE, POLISHED CHROME PLATED WIDE SPREAD FAUCET WITH 4" WRIST BLADE HANDLES, 0.5 GPM, P-TRAP, OFFSET TAILPIECE, 3/8IPS x 1/2OD ANGLE STOPS & FLEXIBLE COPPER RISERS
SK-1	SINK (DOUBLE COMPARTMENT 33"x22"x10")	3/8	3/8	1-1/2	-	COUNTERTOP, DOUBLE COMPARTMENT, STAINLESS STEEL, 8" CENTERS, SWING FAUCET, SINGLE LEVER HANDLE WITH SPRAY, ANGLE STOP, P-TRAP, MIXING VALVE
SK-2	SINK (17"x21"x7")	3/8	3/8	1-1/2	-	COUNTERTOP, SINGLE COMPARTMENT, STAINLESS STEEL, 8" CENTER, SWING GOOSE NECK FAUCET, 4" WRIST BLADE HANDLES, ANGLE STOP, P-TRAP, MIXING VALVE
SK-3	SINK (ART ROOM, 17"x21"x7")	3/8	3/8	1-1/2	-	COUNTERTOP, SINGLE COMPARTMENT, STAINLESS STEEL, CENTER HOLE, FIXED FAUCET, STRAIGHT LEVER HANDLES, TRAP TYPE SOLIDS INTERCEPTOR, MIXING VALVE
SK-4	DOUBLE COMPARTMENT LAUNDRY SINK	1/2	1/2	1-1/2	-	DOUBLE BASIN LAUNDRY SINK, PLASTIC COMPOSITE, BAKED ENAMEL STEEL LEGS, TOP MOUNT FAUCET, ANGLE STOPS AND SUPPLIES, P-TRAPS, MIXING VALVE
MR-1	MOP SINK (24"x24"x12-3/4")	1/2	1/2	3	-	FLOOR TYPE, NEO-CORNER, TERRAZZO, 8" CENTERS, ROUGH CHROME PLATED TOP BRACE FAUCET WITH INTEGRAL SERVICE STOPS, STRAIGHT LEVER HANDLES, VACUUM BREAKER, MOP HANGER
UB-1	RECESSED UTILITY WALL BOX (REFRIGERATOR)	1/4	-	-	-	FACTORY FABRICATED, 16 GAUGE STEEL EPOXY FINISH, FIRE RATED
UB-2	RECESSED UTILITY WALL BOX (CLOTHES WASHER SPACE)	1/2	1/2	2	-	FACTORY FABRICATED, FINAL CONNECTION THIS CONTRACT, FIRE RATED
EW-1	ELECTRIC WATER COOLER (DUAL LEVEL)	3/8	-	1-1/2	-	WALL MOUNT, CHAIR CARRIER, DUAL LEVEL, SELF-CONTAINED, STAINLESS STEEL, PUSH BAR, BOTTLE FILL STATION
MV-1	WATER MIXING VALVE	3/8	3/8	-	-	UNDER SINK, BRONZE, EXPOSED WALL MOUNT, THERMOSTATIC, FLOW RATE @ 2 CPM, SET AT 95°F FOR LAVATORY & SINKS AND 120 ° F FOR SHOWERS.
MV-2	WATER MIXING VALVE	3/4	3/4-IN 1-OUT	-	-	MASTER HIGH-LOW MIXING VALVE, BRONZE, EXPOSED WALL MOUNT FACTORY PRE-PIPED, THERMOSTATIC, FLOW RATE @ 1-17 CPM, SET AT 120°F
FS-1	FLOOR SINK (12"x12"x8")	-	-	3	-	ENAMELED CAST IRON, BEEHIVE STRAINER, TRAP PRIMER, LESS CRATE, RUNNING TRAP WITH CLEAN OUT
CWH-1	GAS WATER HEATER	1-1/2 INLET	1-1/2 OUTLET	-	3/4	100 GALLONS STORAGE, 199,000 BTU/H, ASME CONSTRUCTED, AUTO PILOT, FLOOR MOUNT, STEEL SHELL DIAPHRAGM EXPANSION TANK
EW-1	ELECTRIC WATER HEATER	3/4 INLET	3/4 OUTLET	-	-	30 GALLON, 6 KW(TOTAL), 208 VOLTS, 3 PHASE, WIRED FOR SIMULTANEOUS OPERATION, WALL MOUNT, STEEL SHELL DIAPHRAGM EXPANSION TANK
EW-2	ELECTRIC WATER HEATER	3/4 INLET	3/4 OUTLET	-	-	30 GALLON, 4.5 KW(TOTAL), 208 VOLTS, 1 PHASE, WIRED FOR NON-SIMULTANEOUS OPERATION, WALL MOUNT, STEEL SHELL DIAPHRAGM EXPANSION TANK
CP-1	CIRCULATORY PUMP(INLINE)	-	3/4-1-1/2 FLANGE	-	-	ENGINEERED POLYMER, IN-LINE TYPE, DIGITAL TIMER, AQUASTAT, BALANCING VALVE, 1/4 HP, 115V
TCV-1	TEMPERATURE CONTROL VALVE	-	1/2	-	-	SELF-ACTING THERMOSTATIC RECIRCULATION VALVE SET AT 110°F.
TCV-2	TEMPERATURE CONTROL VALVE	-	1/2	-	-	SELF-ACTING THERMOSTATIC RECIRCULATION VALVE SET AT 130°F.
EW-1	EMERGENCY SHOWER/EYE WASH	1-1/4	1-1/4	2	-	FLOOR MOUNT WITH CAST FLANGE, 1-1/4" OPEN WASTE TEE DRAIN, PULL BAR HANDLE.
FD	FLOOR DRAIN	-	-	3	-	FLOOR MOUNT WITH CAST FLANGE, OPEN WASTE TEE DRAIN, PULL BAR HANDLE, FLOOR DRAIN
HDFD	HEAVY DUTY FLOOR DRAIN	-	-	4	-	HEAVY DUTY, DEEP SEAL, TRAP PRIMER CONNECTION
WH	RECESSED WALL HYDRANT	3/4	-	-	-	FLUSH MOUNTING WALL BOX, BRASS, CHROME FINISH, ANTI-SIPHON VACUUM BREAKER, DUAL CHECK VALVE, INTEGRAL SERVICE SHUT-OFF VALVE, WHEEL HANDLE, (ACORN 8160)
HB	HOSE BIB	3/4	-	-	-	BRASS, CHROME FINISH, ANTI-SIPHON VACUUM BREAKER, WHEEL HANDLE, INTEGRAL SERVICE STOP
TP-1	TRAP PRIMER (EXPOSED)	1/2	-	-	-	MIFAB MODEL M-500, BALL VALVE, FASTEN SECURELY TO WALL.
TP-2	TRAP PRIMER (EXPOSED)	1/2	-	-	-	MIFAB MODEL M-500, MI-DU DISTRIBUTION UNIT, BALL VALVE. FASTEN SECURELY TO WALL. CAP UNLUSED MANIFOLD OUTLETS
TP-3	TRAP PRIMER (FLUSH MOUNTED BOX)	1/2	-	-	-	MIFAB MODEL MR-ENC-AG-DU-500, 7" x 18" FLUSH MOUNTED BOX, WITH OPTIONAL COVER WITH CYLINDER KEY LOCK, AIR GAP, VACUUM BREAKER, BALL VALVE, CAP UNLUSED MANIFOLD OUTLETS

- WATER SUPPLY TAPPING TO EACH PLUMBING FIXTURE SHALL BE FULL SIZE (MINIMUM).
- SEE ELECTRICAL DWGS FOR FINAL POWER REQUIREMENTS. PROVIDE WATER HAMMER ARRESTORS ON HOT & COLD WATER SUPPLY BRANCHES SERVING SINGULAR, MULTIPLE OR GROUPS OF PLUMBING FIXTURES. ADHERENCE TO THE PLUMBING AND DRAINAGE INSTITUTE STANDARD P.D.I.-WH201 (PER SPECIFICATIONS)
- SHALL BE EMPLOYED IN DETERMINING PROPER SIZE, SELECTION, PLACEMENT, LOCATION AND INSTALLATION OF ARRESTERS.

NO.	DATE	DESCRIPTION

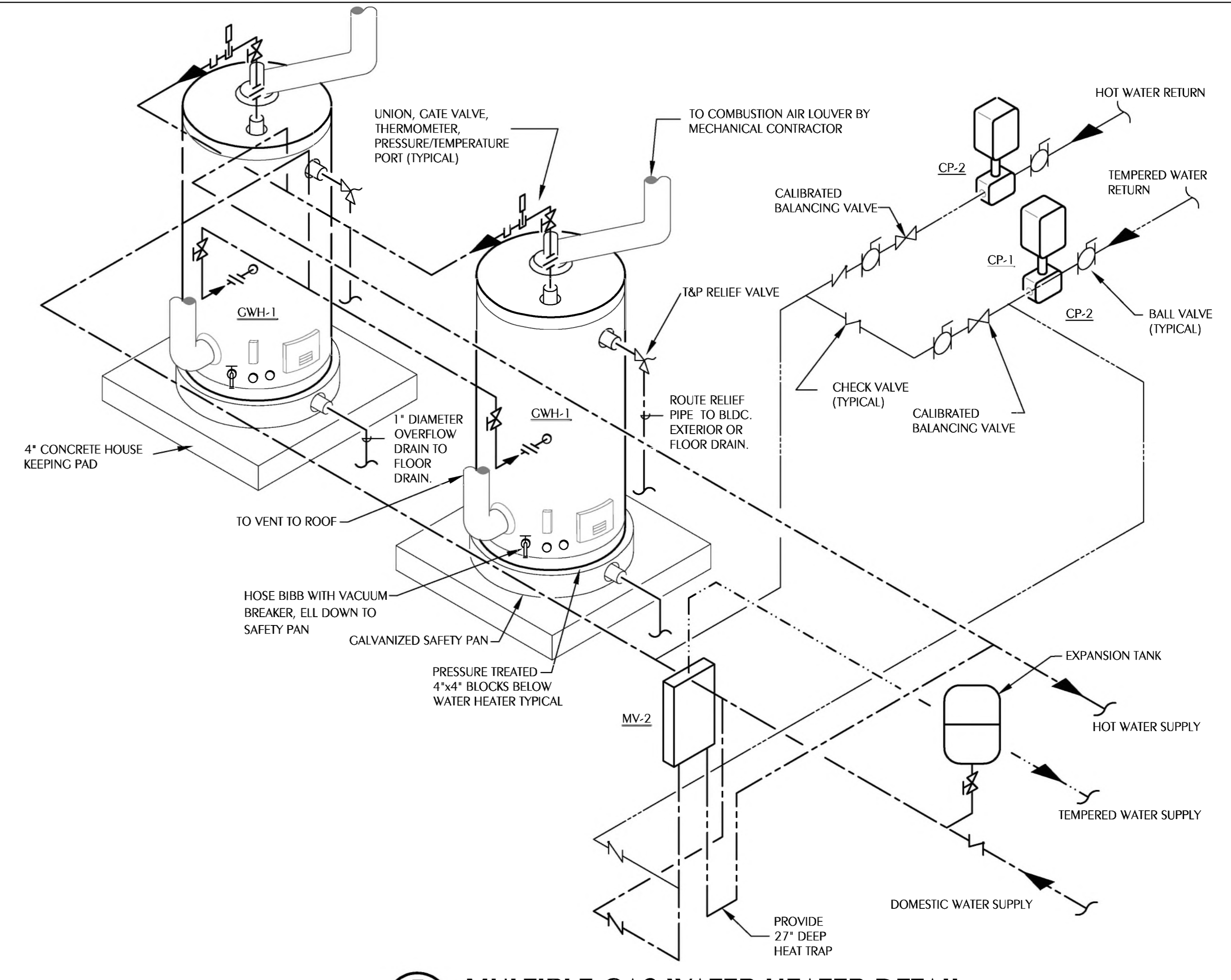
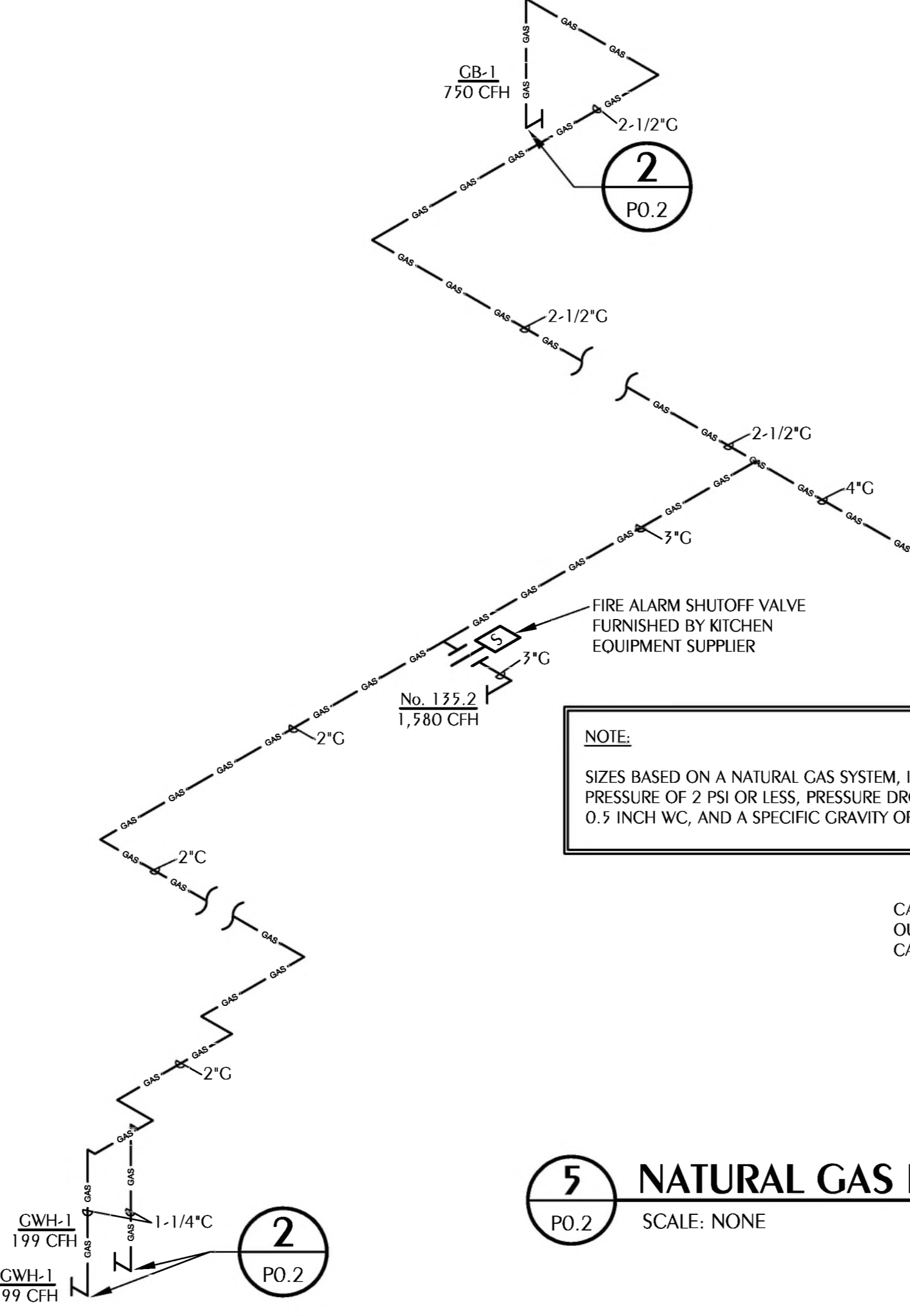
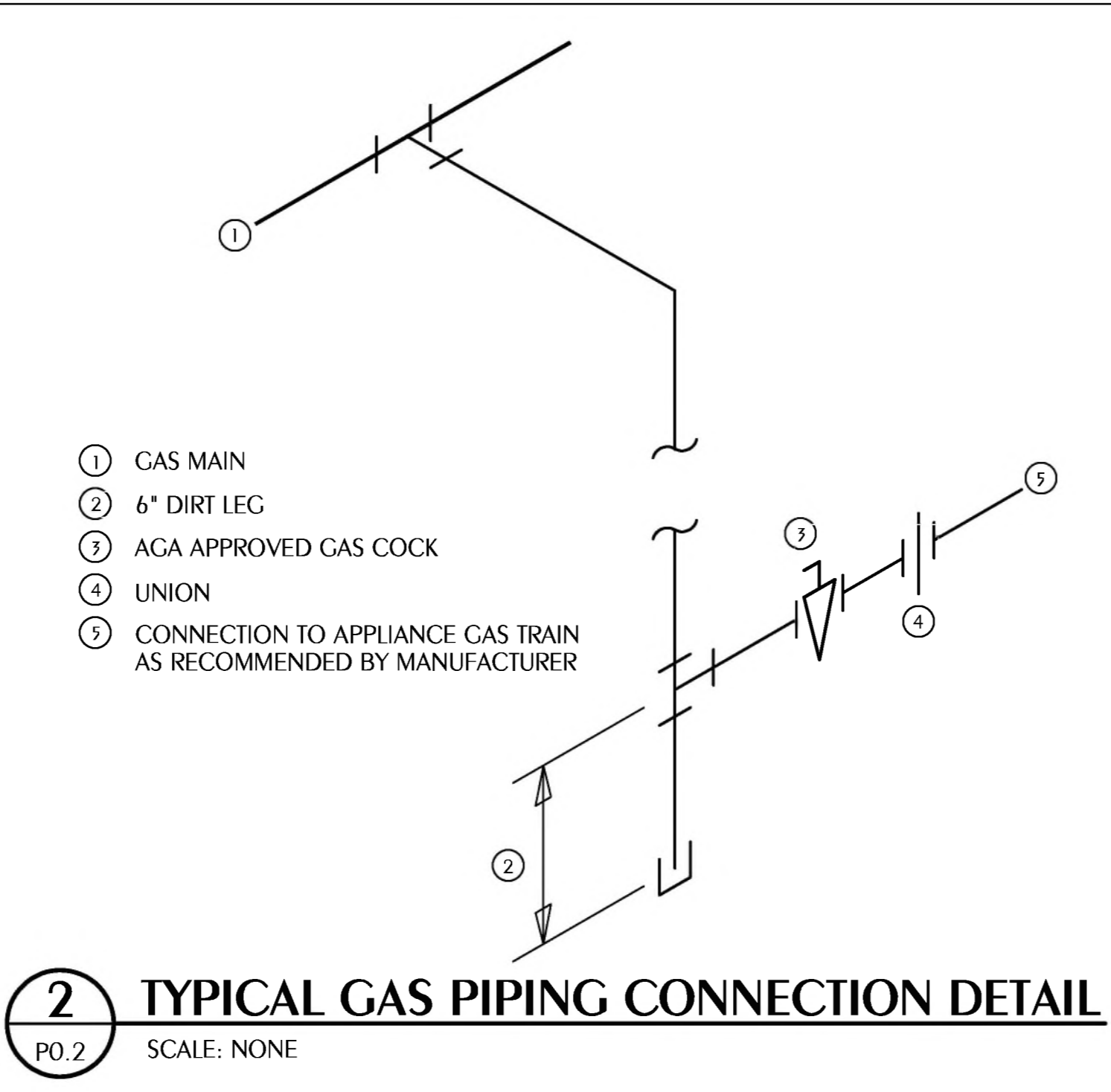
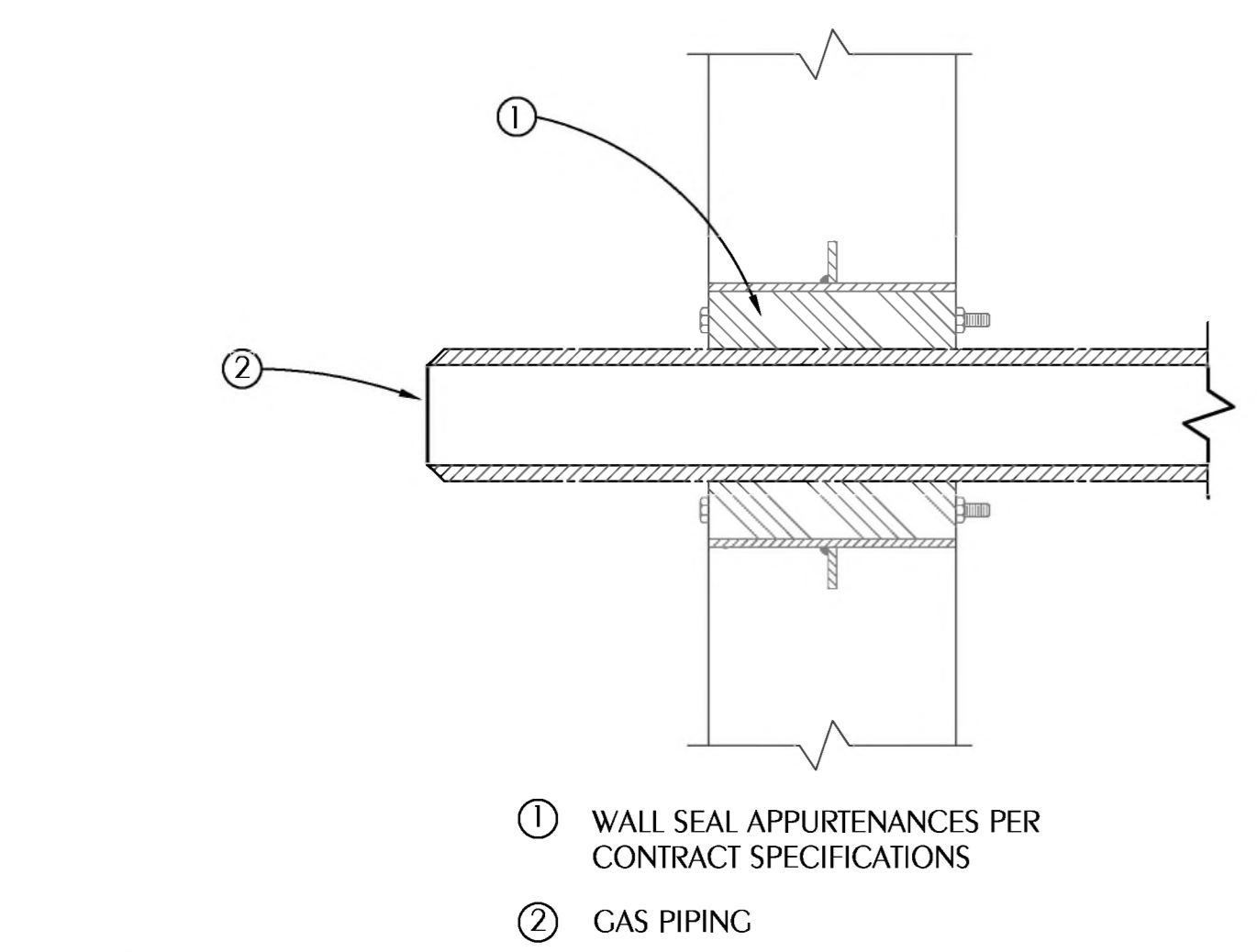
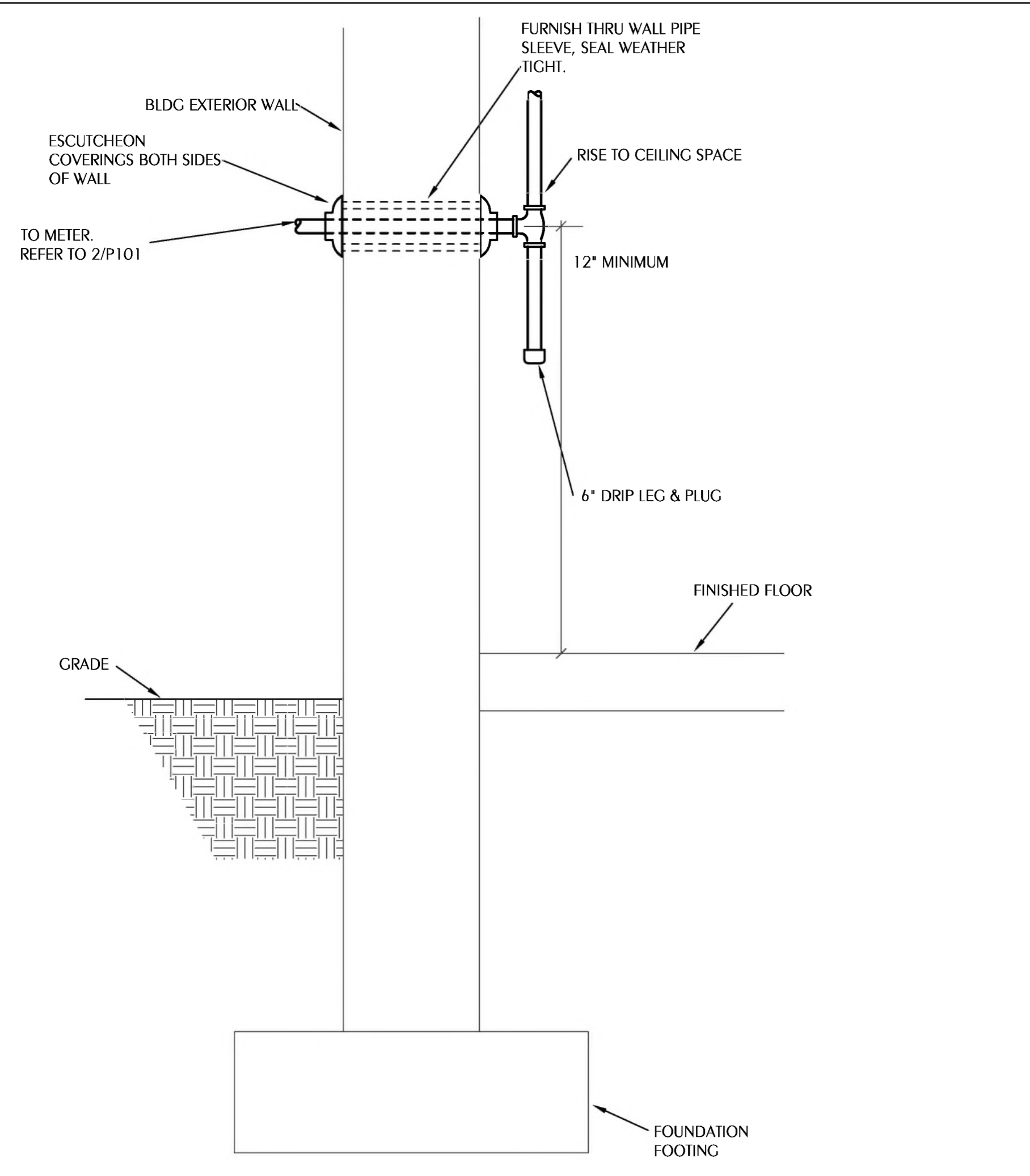
DATE	DESCRIPTION
01/26/2025	



NO.	DATE	DESCRIPTION

DATE	DESCRIPTION

DATE	DESCRIPTION



### GAS FIRED EQUIP. SCHEDULE

TAG	INPUT (BTUH)	CONNECTION SIZE	INLET PRESSURE RANGE IN. WC
GB-1	750000	1"	7" - 28"
CWH-1	199000	3/4"	3.5" - 14"
CWH-1	199000	3/4"	3.5" - 14"
GENERATOR	2042000	VERIFY	7" - 11"
UDS HOOD	1580000	1-1/2"	7" - 10"

### GENERAL NOTES

- COORDINATE GAS SERVICE AND METERING WITH GAS UTILITY. CONTRACTOR SHALL PAY ALL FEES AND INSTALLATION COST FOR SERVICE TO THE BUILDING.
- COORDINATE FINAL CONNECTION SIZE AND LOCATION WITH EQUIPMENT SUPPLIER.

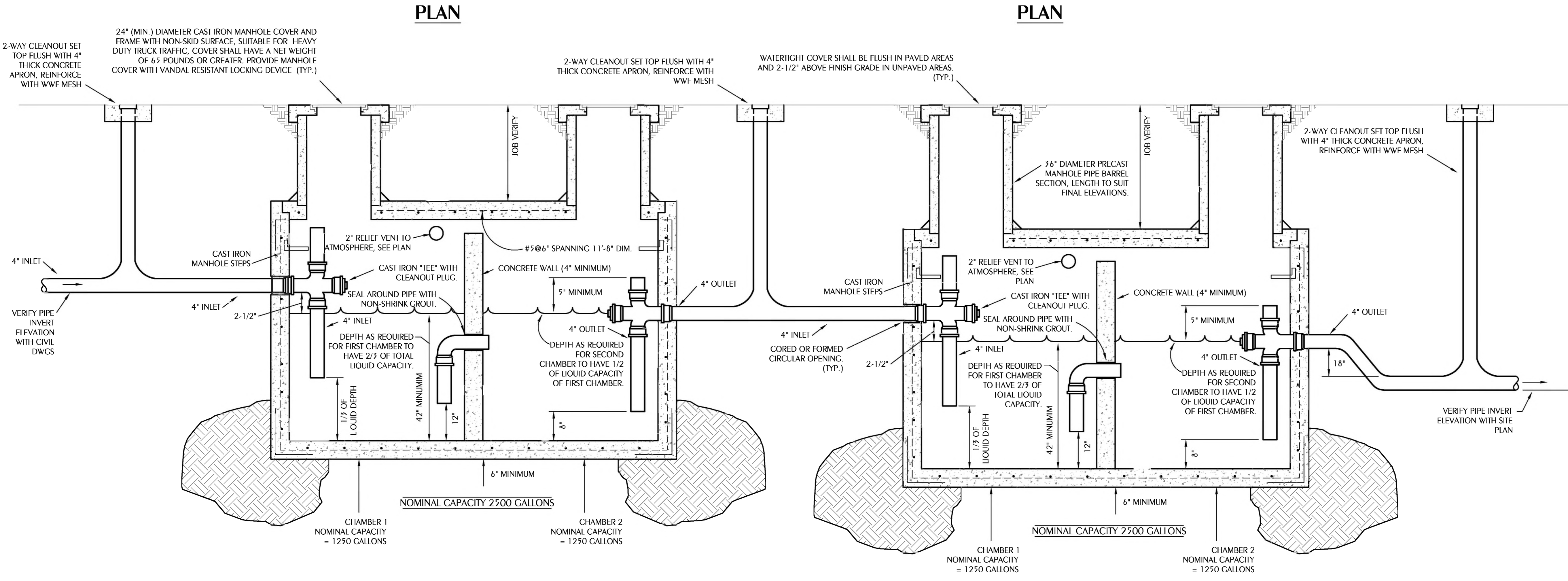
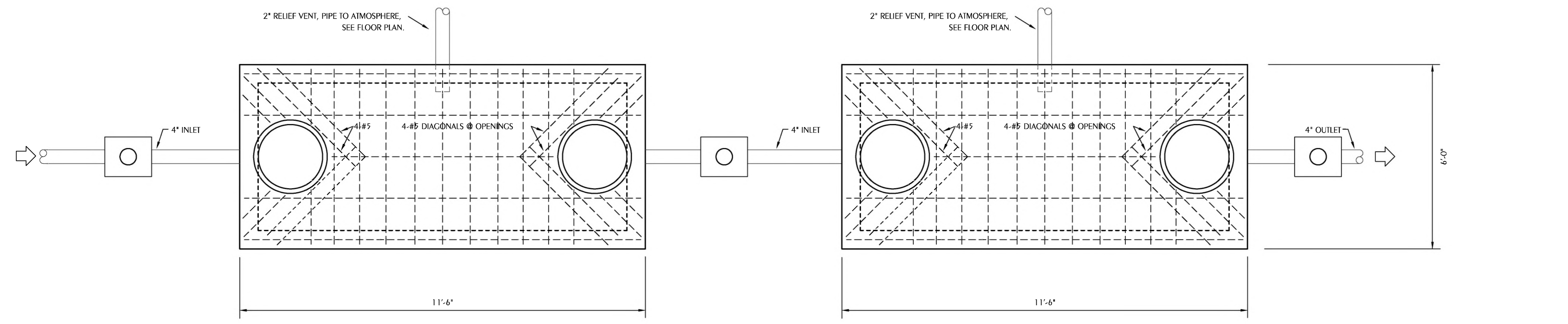
### UDS HOOD GAS FIRED EQUIP. SCHEDULE

TAG	INPUT (BTUH)	CONNECTION SIZE	INLET PRESSURE RANGE IN. WC
132	144000	1/2"	4.5" - 14"
134	150000	1/2"	4.5" - 14"
138	90000	1"	7"
FUTURE	1,134	1-1/2"	-

### EQUIPMENT UTILITY SCHEDULE

ITEM NO	QTY	EQUIPMENT CATEGORY	HOT WATER SIZE (IN)	COLD WATER SIZE (IN)	COLD WATER AFF (IN)	COLD WATER AFF (IN)	DIRECT DRAIN SIZE (IN)	INDIRECT DRAIN SIZE (IN)	MBTUH	GAS SIZE (IN)	GAS AFF (IN)	PLUMBING REMARKS
106	1	EVAPORATOR COIL - COOLER						3/4"				PLUMBER SHALL EXTEND I.W. TO NEAREST FUNNEL DRAIN
106.1	1	EVAPORATOR COIL-FREEZER						3/4"				PLUMBER SHALL EXTEND I.W. TO NEAREST FUNNEL DRAIN
114	1	DISPENSER-HOT WATER			1/2"	30"		1/2"				FILTER BY KEC. SHUT-OFF VALVE AND FINAL CONNECTION BY PLUMBER
123	1	VEG. PREP. TABLE WITH SINKS										
123.1	1	PRE RINSE W/16" NOZZLE - SPLASH MOUNT	1/2"	16"	1/2"	16"						SHUT-OFF VALVE AND FINAL CONNECTION TO FAUCET BY PLUMBER
124	1	2 HP DISPOSER WITH CONTROL	1/2"	20"	2"	16"						PLUMBER SHALL CONNECT TO DIRECT WASTE
128	6	HAND SINK - WALL MOUNT	1/2"	24"	1/2"	24"	1-1/2"	20"				SHUT-OFF VALVE AND FINAL CONNECTION TO FAUCET & DIRECT WASTE BY PLUMBER
130	1	MEAT PREP TABLE WITH SINK						1-1/2"				PLUMBER SHALL EXTEND I.W. TO NEAREST FLOORSINK
130.1	1	FAUCET-16" NOZZLE - SPLASH MOUNT	1/2"	16"	1/2"	16"						SHUT-OFF VALVE AND FINAL CONNECTION TO FAUCET BY PLUMBER
131	-	CONVECTION STEAMER (FUTURE ITEM)										PROVIDE PLUMB. & GAS UTILITY REQUIREMENTS FOR STEAMER IN #135.2UDS
132	1	TILT SKILLET 40 GAL. GAS	1/2"	1/2"					1/2"	144		PLUMBING CONTRACTOR TO INTER-CONNECT TO #135.2, UDS
133	2	S/S FLOOR TROUGH WITH FIBERGLASS GRATE						4"				KEC TO PROVIDE TROUGH. PLUM. CONTRACTOR TO SET AND FINAL CONNECT
134	1	TILT KETTLE 40 GAL. GAS	1/2"	1/2"					1/2"	150		PLUMBING CONTRACTOR TO INTER-CONNECT TO #135.2, UDS
135	1 LOT	ISLAND EXHAUST HOOD										
135.2	1 LOT	UTILITY DISTRIBUTION SYSTEM	3/4"	120"	3/4"	120"			3/4"	1134		REFER TO SHEET FS6.0, FS6.1, FS6.2, FS6.3, FS6.4, FS6.5, FS6.6
138	1	2 BURNER RANGE- GAS						4"	1"	90		PLUMBING CONTRACTOR TO INTER-CONNECT TO #135.2, UDS
140	2	COMBI OVEN - ELECTRIC-10 PAN			3/4"			2"				PLUMBING CONTRACTOR TO INTER-CONNECT TO #135.2, UDS & EXTEND I.W. TO FLOOR TROUGH
141	2	S/S FLOOR TROUGH WITH FIBERGLASS GRATE						4"				KEC TO PROVIDE TROUGH. PLUM. CONTRACTOR TO SET AND FINAL CONNECT
149	1	ICE MAKER-CUBE	1/2"	78"				3/4"				SHUT-OFF VALVE AND FINAL CONNECTION THRU #149.1, WATER FILTER TO ICE MAKER & I.W. BY PLUMBER
149.1	1	WATER FILTER										WATER FILTER SHALL BE MOUNTED AT CONV HEIGHT AND ACCESSIBLE FOR CHANGING FILTER
149.2	1	ICE BIN						3/4"				PLUMBER SHALL EXTEND I.W. TO #150, FLOOR TROUGH
150	1	FLOOR TROUGH WITH FIBERGLASS GRATE						4"				KEC TO PROVIDE TROUGH. PLUM. CONTRACTOR TO SET AND FINAL CONNECT
167	1	SPRAY SYSTEM-WALL MOUNT	3/4"	12"								SHUT-OFF VALVE AND FINAL CONNECTION SPRAY UNIT. BY PLUMBER, PROVIDE FL. DRAIN UNDER UNIT
175	3	HOT FOOD PAN - 4 PAN						3/4"				PLUMBER SHALL EXTEND I.W. TO NEAREST FLOORSINK
176	3	COLD PAN-4-WELL						3/4"				PLUMBER SHALL EXTEND I.W. TO NEAREST FLOORSINK
187	1	SOILED DISHTABLE	1/2"	24"	1/2"	24"	(2) 2"	16"				SHUT-OFF VALVE AND FINAL CONNECTION TO DISPOSER & DIRECT WASTES BY PLUMBER
188	1	DISPOSER										
189	1	HOSE REEL										
191	1	DISHWASHER L-R W/BUILT IN BOOSTER	1/2"	24"	1/2"	24"			2"			SHUT-OFF VALVE AND FINAL CONNECTION TO DISHWASHER & IND. WASTE BY PLUMBER
194	1	TURBOWASH POT/SINK W/ELECT. TANK HEAT	(2)3/4"	12"	(2)3/4"	12"			(3) 2"			SHUT-OFF VALVE AND FINAL CONNECTION TO POT WASHER & IND. WASTE BY PLUMBER





**1 GREASE INTERCEPTOR DETAIL**  
 PO.3 SCALE: NONE (FOUR 2500 GALLON INTERCEPTORS REQUIRED IN LINE)  
 NOTE: DRAWING IS DIAGRAMMATICAL IN NATURE. SEE FLOOR PLAN SHEET P2.1 FOR INLET AND OUTLET LOCATIONS AND GREASE TRAP CONFIGURATION.

**GREASE INTERCEPTOR NOTES:**  
 NUMBER OF MEALS PER DAY x GALLONS WASTE PER MEAL x LOADING FACTOR = INTERCEPTOR GALLON CAPACITY  
 1) MEALS SERVED PER DAY = 1700  
 2) GALLONS WASTE PER MEAL = 5  
 3) LOADING FACTOR = 1  
**CALCULATION:**  
 1700 x 5 x 1 = 8500 GALLONS

REVISIONS	NO.	DATE	DESCRIPTION

DATE	DESCRIPTION
01/26/2025	

PROJECT NAME / LOCATION  
**MOWAT MIDDLE SCHOOL CAFETERIA AND ADMINISTRATION ADDITION**  
 PANAMA CITY, FLORIDA  
 SHEET TITLE:  
**PLUMBING DETAIL**







NO.	DATE	DESCRIPTION

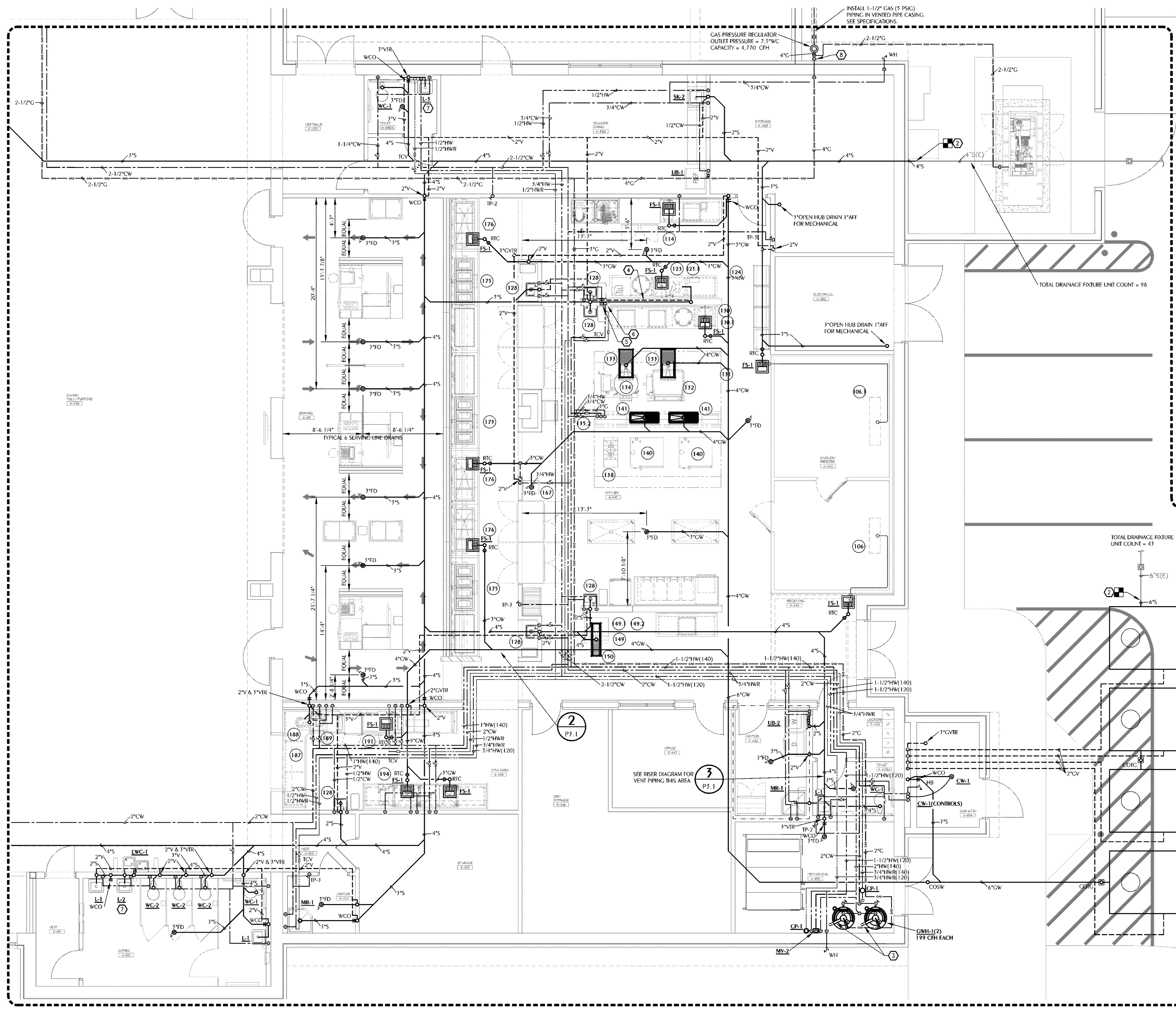
DATE	DESCRIPTION
01/06/2025	

PROJECT NAME LOCATION  
**MOWAT MIDDLE SCHOOL CAFETERIA AND ADMINISTRATION ADDITION**  
PANAMA CITY, FLORIDA

SHEET TITLE  
**ENLARGED KITCHEN PLUMBING PLAN**

**SHEET NOTES**

- 1/2" COLD WATER BELOW SLAB. STUB UP FOR FUTURE TRAP PRIMER CONNECTION.
- CONNECT TO EXISTING BELOW GRADE PIPING. REFER TO EARLY PACKAGE.
- GAS WATER HEATER AIR INTAKE AND EXHAUST SHALL BE PROTECTED. PROVIDE PRODUCTS BY ROOF PENETRATION HOUSING, LLC OR APPROVED EQUAL MEETING ICC-500 AND FEMA 761 STANDARDS. PROVIDE CYCLONE WALL VAULT AT WALL PENETRATION. WITH CYCLONE WALL VAULT THROLOD ON THE EXTERIOR WALL. PROVIDE WITH EXIT SEALS. INSTALL PER MANUFACTURER'S WRITTEN INSTALLATION INSTRUCTIONS.
- ROUTE 2" V HIGH AS POSSIBLE IN LOW WALL - SEE RISER DIAGRAM 3/P3.1 FOR CONTINUATION.
- 1" CW DOWN - EXTEND AND CONNECT TO TWO HAND SINKS ITEM 128, ITEM 123.1, ITEM 124, AND ITEM 130.1
- 3/4" HW DOWN - EXTEND AND CONNECT TO ITEMS 123.1 AND 130.1
- FURNISH WITH WATER SAVER TRAP PRIMER EQUAL TO ZURN 11021. ROUTE 1/2" CW TO FLOOR DRAIN. NO JOINTS BELOW FLOOR SLAB.
- EXTERIOR EMERGENCY GAS SHUT-OFF VALVE TIED INTO FIRE ALARM CONTROL PANEL. EMERGENCY MAIN SHUT-OFF SOLENOID VALVE SHALL REQUIRE MANUAL RESET AT VALVE FOR RESUMPTION OF SERVICE. VALVE SHALL BE RATED FOR EXTERIOR INSTALLATION (WEATHERPROOF). LISTED FOR FUEL GAS SERVICE, AND FACTORY MUTUAL APPROVED AS MANUFACTURED BY ASCO SERIES 800/8215, "WATTS" C7000 SERIES, OR "R.C. LAURANCE" 700/800 SERIES. SOLENOID VALVE SHALL BE NORMALLY CLOSED AND HELD OPEN BY 24 VOLT POWER FROM FIRE ALARM PANEL. FIRE ALARM PANEL SHALL INTERRUPT POWER TO SOLENOID VALVE IN THE EVENT OF FIRE ALARM CONDITION. COORDINATE WITH ELECTRICAL AND FIRE ALARM SUBCONTRACTOR FOR POWER AND WIRING REQUIREMENTS. MATCH VALVE SIZE TO SYSTEM CAPACITY AND PIPE SIZE INDICATED.

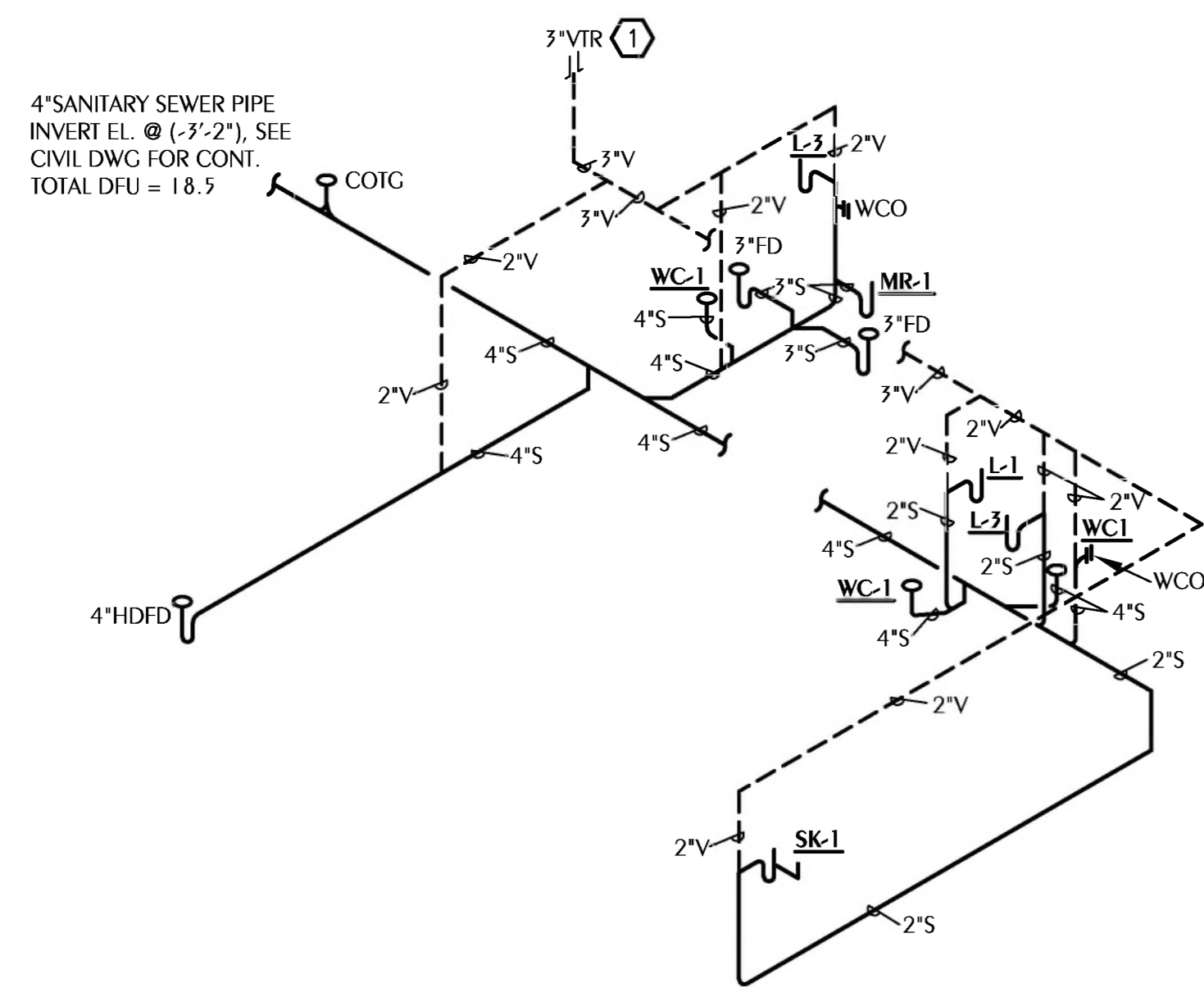


**PLUMBING NEW WORK PLAN - BUILDING 4 - MULTI-PURPOSE/KITCHEN**  
SCALE: 1/4" = 1'-0"

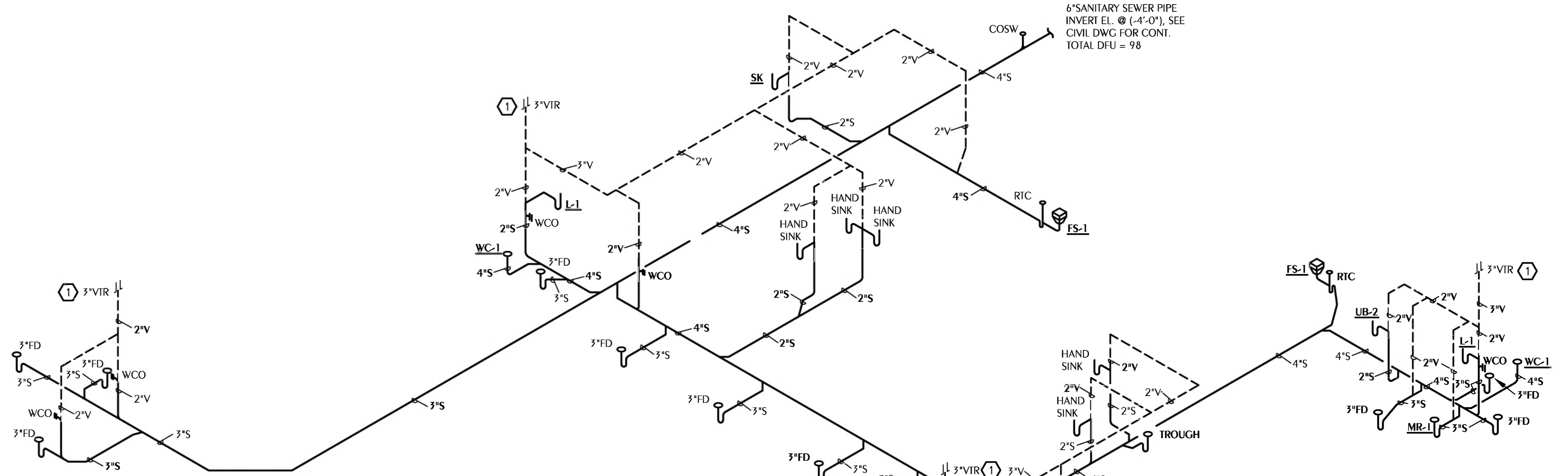


**SHEET NOTES**

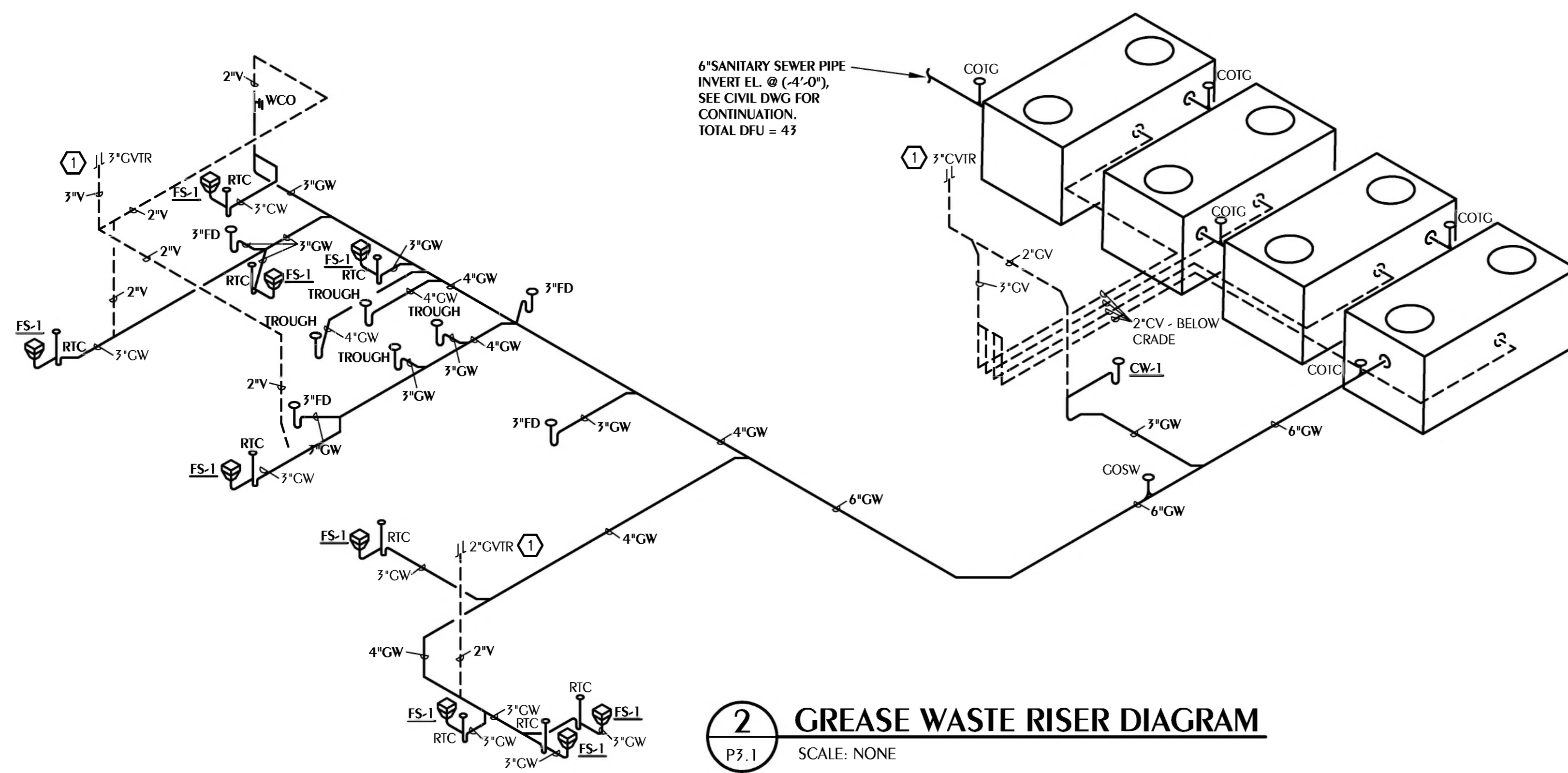
- VENTS THRU ROOF (VTR'S) SHALL BE PROTECTED AT ROOF PENETRATION. PROVIDE PRODUCTS BY ROOF PENETRATION HOUSING, LLC OR APPROVED EQUAL MEETING ICC-500 AND FEMA 361 STANDARDS. PROVIDE CYCLONE CVTR. INSTALL PER MANUFACTURER'S WRITTEN INSTALLATION INSTRUCTIONS.



**1 SANITARY RISER DIAGRAM**  
SCALE: NONE



**3 SANITARY RISER DIAGRAM**  
SCALE: NONE



**2 GREASE WASTE RISER DIAGRAM**  
SCALE: NONE

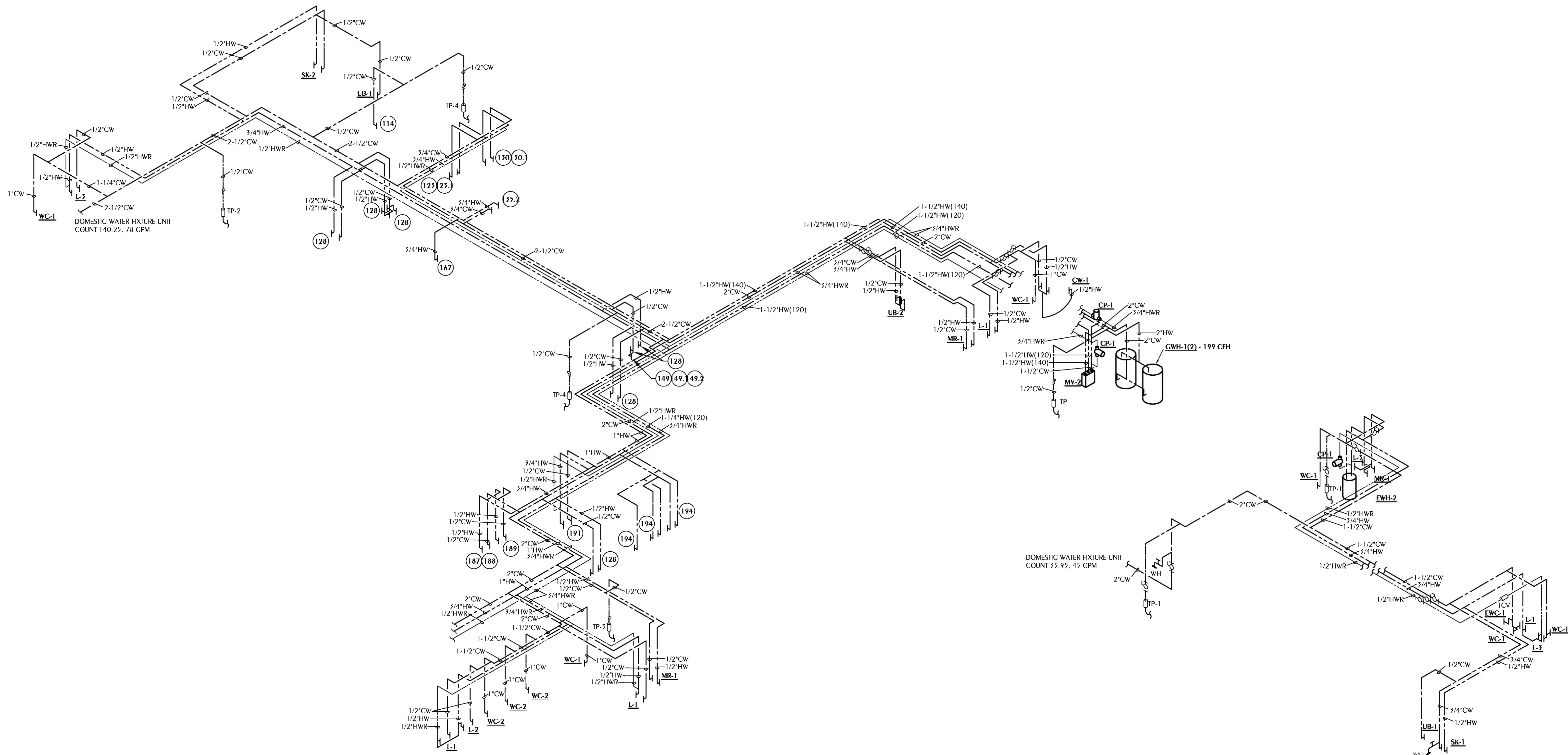
NO.	DATE	DESCRIPTION

DATE	DESCRIPTION
01/08/2025	

PROJECT NAME / LOCATION  
**MOWAT MIDDLE SCHOOL  
CAFETERIA AND ADMINISTRATION ADDITION**  
PANAMA CITY, FLORIDA

SHEET TITLE  
**PLUMBING SANITARY RISER DIAGRAMS**





**1 DOMESTIC WATER RISER DIAGRAM**  
 P3.2 SCALE: NONE

**2 DOMESTIC WATER RISER DIAGRAM**  
 P3.2 SCALE: NONE

REVISIONS	
NO.	DESCRIPTION

SUBMITTAL	
DATE	DESCRIPTION
01/26/2025	

PROJECT NAME / LOCATION  
**MOWAT MIDDLE SCHOOL  
 CAFETERIA AND ADMINISTRATION ADDITION**  
 PANAMA CITY, FLORIDA  
 SHEET TITLE:  
**PLUMBING DOMESTIC WATER RISER DIAGRAMS**