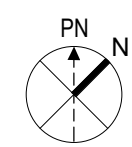
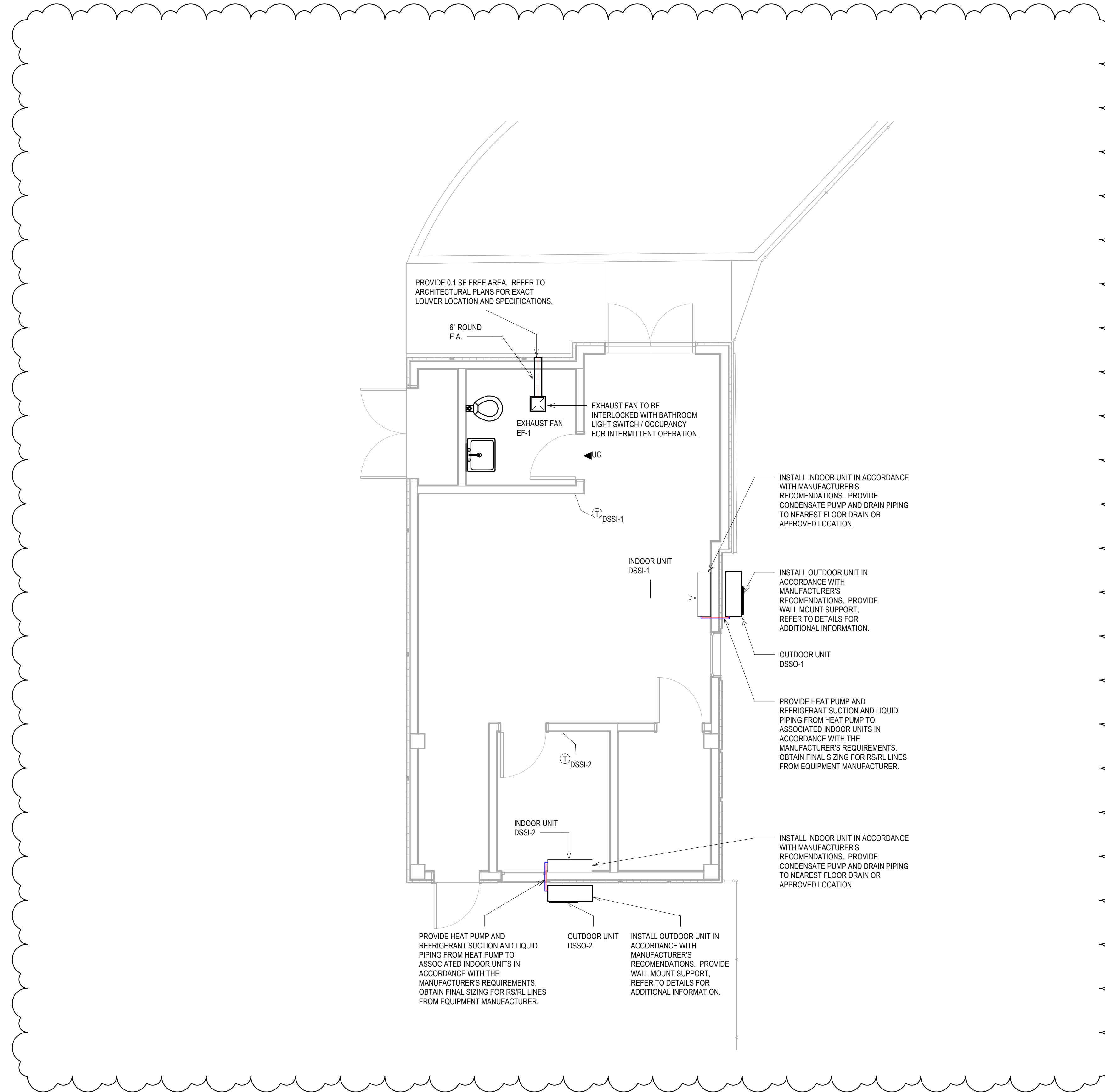




**GENERAL NOTES:**

- ALL EQUIPMENT INSTALLATIONS SHOWN IN THE DETAIL SHEETS ARE GENERIC. FOR ALL EQUIPMENT TO BE MOUNTED ON ROOF, GRADE OR EXTERIOR BUILDING WALLS, CONTRACTOR SHALL SUBMIT COMPLETE SHOP DRAWINGS DETAILING THE ATTACHMENTS OF SUCH EQUIPMENT TO BUILDING STRUCTURE IN COMPLIANCE WITH 2020 FLORIDA BUILDING CODE REQUIREMENTS. SHOP DRAWINGS SHALL BE SIGNED/SEALED BY A STRUCTURAL FLORIDA P.E. AND SUBMITTED FOR REVIEW AND APPROVAL BY PROJECT'S STRUCTURAL ENGINEER OF RECORD.
- ALL STEEL SUPPORTS AND ASSOCIATED COMPONENTS FOR MECHANICAL EQUIPMENT INSTALLED OUTDOORS OR INSIDE BUILDING'S UN-AIR CONDITIONED SPACES (EXPOSED OR CONCEALED) SHALL BE HOT DIP GALVANIZED AFTER FABRICATION WHETHER SHOWN OR NOT ON THE DETAIL SHEETS OF THIS CONSTRUCTION DRAWING SET.
- ALL PIPING ASSOCIATED WITH MECHANICAL SYSTEMS SHALL BE SUPPORTED (WALLS, ROOF, SLABS) AT 6'-0" ON CENTER.
- ALL MECHANICAL EQUIPMENT INSTALLED OUTDOORS AND THAT IS EXPOSED TO THE WIND SHALL BE BUILT AND ANCHORED TO SUSTAIN HURRICANE FORCE WINDS AS OUTLINED IN SECTION 6 OF ASCE STANDARD 7. WIND VELOCITY 3-SECOND GUST) USED IN STRUCTURAL CALCULATIONS SHALL BE IN COMPLIANCE WITH FBC REQUIREMENTS.
- COORDINATE ALL EQUIPMENT ON ROOF WITH STRUCTURAL DRAWINGS AND JOIST/BEAM LOCATIONS. FINAL MECHANICAL SHOP DRAWINGS SHALL REFLECT STRUCTURAL MEMBER POSITIONS.
- CONDENSATE DRAINAGE PIPING SHALL BE PVC CONSTRUCTION PER SPECS UNLESS IT IS LOCATED INSIDE A CEILING PLENUM SPACE. IF INSIDE A PLENUM, IT SHALL BE COPPER CONSTRUCTION PER SPECS.
- ALL DUCT SIZES SHOWN ON DRAWINGS ARE CLEAR INSIDE DIMENSIONS.
- PROVIDE CEILING/WALL ACCESS PANELS WHERE REQUIRED TO ACCESS HVAC EQUIPMENT. PANELS SHALL BE RECESSED TYPE, FIRE RATED IF IN RATED WALLS OR CEILINGS.
- DURING CONSTRUCTION, ALL SUPPLY AND RETURN OPENINGS INCLUDING GRILLES IN THE AREAS AFFECTED SHALL BE FITTED WITH BLANKET TYPE, DISPOSABLE 1" THICK SYNTHETIC MEDIA IN ORDER TO PREVENT CONSTRUCTION DEBRIS FROM ENTERING AND ACCUMULATING INSIDE THE DUCT SURFACES AND INSIDE MECHANICAL EQUIPMENT.
- PROVIDE MANUAL DAMPERS AT INACCESSIBLE GYPSUM BOARD CEILING AREAS WITH BOWDEN REMOTE CABLE CONTROLS BY YOUNG REGULATOR COMPANY. CABLE CONTROL TO TERMINATE AT DIFFUSERS.
- ALL CONDENSATE DRAINAGE PIPING SHALL BE SLOPED AT 1/8" PER FOOT, AND IF INSTALLED ON ROOF PROVIDE MIAMI-DADE COUNTY NOA APPROVED SUPPORT AT 6' O.C.
- PROVIDE TURNING VANES FOR 90 DEGREE ELBOWS. TURNING VANES SHALL BE DOUBLE THICKNESS, AIRFOIL TYPE.



1

**MECHANICAL FLOOR PLAN**

SCALE: 1/4" = 1'-0"

**AVIS CAR RENTAL**  
WESLEY CHAPEL LOCATION



4708 Capital Circle NW  
Tallahassee FL, 32303  
(850) 205-2150

PROFESSIONAL SEAL(S)

CONSULTANT INFORMATION



• BUILDINGS • EARTH & ENVIRONMENT • ENERGY •  
• INDUSTRIAL • INFRASTRUCTURE • SUSTAINABILITY •

EXP U.S. Services Inc.  
201 Alhambra Circle, Suite 800 | Coral Gables, FL 33134  
t: +1.305.631.2208 | exp.com  
Cert of Auth: 29701

PROJECT TITLE

**PREMIER GROUP  
PANAMA CITY AVIS**

**MARTIN LUTHER KING JR BLVD  
PANAMA CITY, FL 32405**

PROPERTY OF PREMIER COMMERCIAL GROUP  
- FOR OFFICIAL USE ONLY -  
- DO NOT REMOVE THIS NOTE -

PROPERLY DESTROY DOCUMENTS WHEN NO LONGER NEEDED. GENERAL CONTRACTOR TO VERIFY ALL DIMENSIONS AND CONDITIONS AT JOB SITE PRIOR TO CONSTRUCTION. GENERAL CONTRACTOR SHALL NOTIFY ISD OF ANY DISCREPANCIES PRIOR TO CONSTRUCTION AND / OR ORDERING MATERIALS.

No.	Revision	By	Date
2	Revision No. 2		11/14/2024
1	Revision No. 1		05/24/2024

DRAWING TITLE

**MECHANICAL PLAN**

PROJECT PHASE

**PRELIMINARY DESIGN**

Drawn By: **Author**

Checked By: **Checker**

Approved By: **Approver**

Issue Date: **Issue Date**

work Order No: **Specify File Name**

SHEET NO. **M101** REV. NO. **2**

PROFESSIONAL SEAL(S)

CONSULTANT INFORMATION



- BUILDINGS • EARTH & ENVIRONMENT • ENERGY •
- INDUSTRIAL • INFRASTRUCTURE • SUSTAINABILITY •

EXP U.S. Services Inc.  
201 Alhambra Circle, Suite 800 | Coral Gables, FL 33134  
t: +1.305.631.2208 | exp.com  
Cert of Auth: 29701

PROJECT TITLE

**PREMIER GROUP  
PANAMA CITY AVIS**

**MARTIN LUTHER KING JR BLVD  
PANAMA CITY, FL 32405**

PROPERTY OF PREMIER COMMERCIAL GROUP  
- FOR OFFICIAL USE ONLY -  
- DO NOT REMOVE THIS NOTE -

PROPERLY DESTROY DOCUMENTS WHEN NO LONGER  
NEEDED. GENERAL CONTRACTOR TO VERIFY ALL  
DIMENSIONS AND CONDITIONS AT JOB SITE PRIOR TO  
CONSTRUCTION. GENERAL CONTRACTOR SHALL NOTIFY ISD  
OF ANY DISCREPANCIES PRIOR TO CONSTRUCTION AND / OR  
ORDERING MATERIALS.

No.	Revision	By	Date
2	Revision No. 2		11/14/2024
1	Revision No. 1		05/24/2024

DRAWING TITLE

**MECHANICAL DETAILS**

PROJECT PHASE

**PRELIMINARY DESIGN**

Drawn By: **Author**

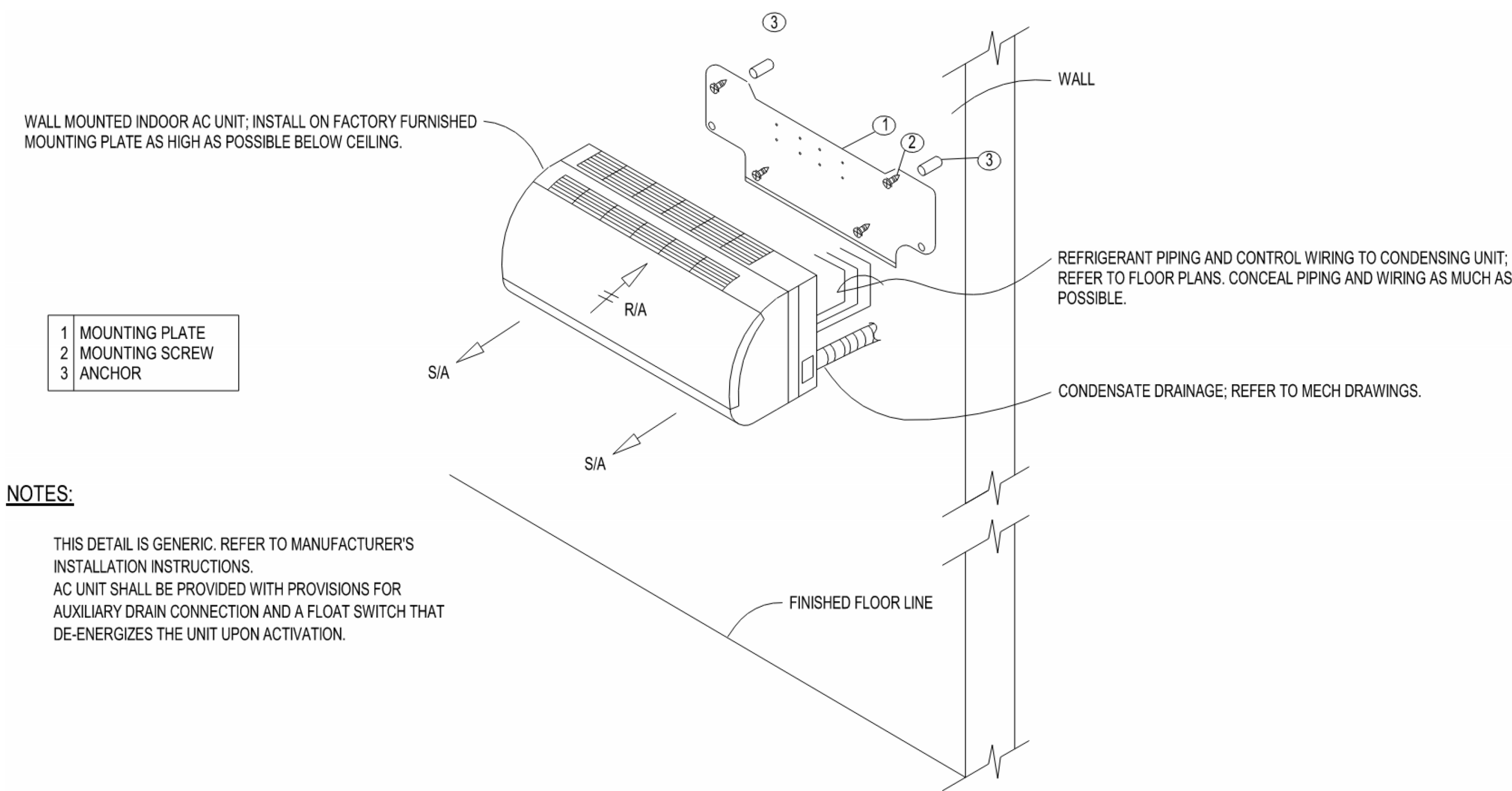
Checked By: **Checker**

Approved By: **Approver**

Issue Date: **Issue Date**

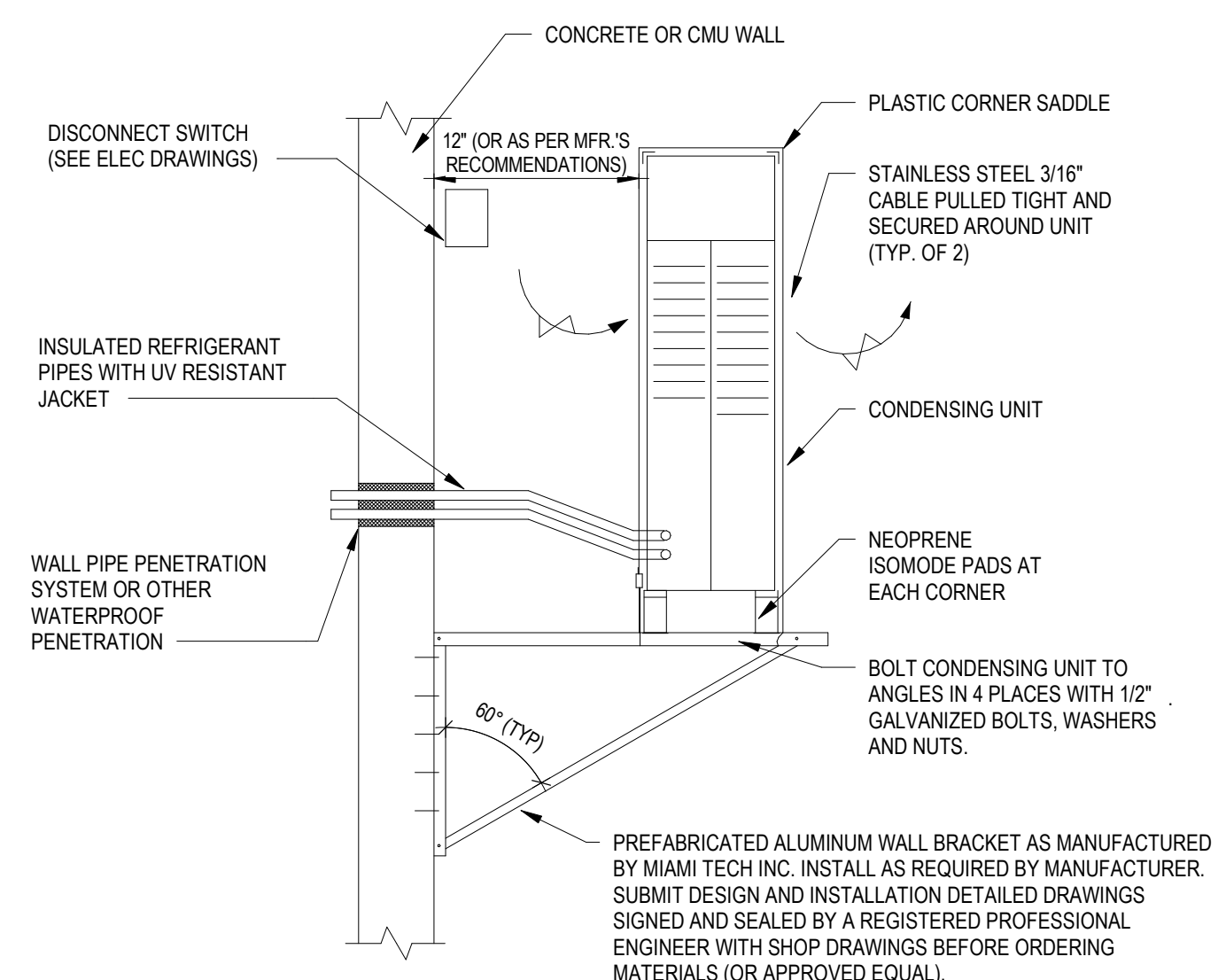
work Order No: **Specify File Name**

SHEET NO. **M200** REV. NO. **2**



**NOTES:**  
THIS DETAIL IS GENERIC. REFER TO MANUFACTURER'S  
INSTALLATION INSTRUCTIONS.  
AC UNIT SHALL BE PROVIDED WITH PROVISIONS FOR  
AUXILIARY DRAIN CONNECTION AND A FLOAT SWITCH THAT  
DE-ENERGIZES THE UNIT UPON ACTIVATION.

**1 DUCT PENETRATION THRU INTERIOR WALL**  
NTS



**2 CONDENSING UNIT WALL MOUNTING**  
NOT TO SCALE

### DUCTLESS SPLIT SYSTEM INDOOR UNIT - HEAT PUMP

UNIT NO.	MANUFACTURER & MODEL NUMBER	SERVICE	LOCATION	TYPE	FAN DATA			DX COIL (COOLING)					DX COIL (HEATING)			REFRIG. TYPE	ELECTRICAL DATA (POWERED FROM OUTDOOR UNIT)	OPER. WT. (LBS)	NOTES	Volts	Phase	MCA	
					ELEVATION (FT)		EAT (°F)	LAT (°F)		COOLING CAP. (MBH)		EAT (°F)	LAT (°F)	HEATING CAP. (MBH)									
					CFM	ESP	MOTOR (WATTS)	DB	WB	DB	WB	TOTAL	SENS.	DB	DB								TOTAL
DSSI-1	DAIKIN FTXB09AXVJU	LOBBY, RESTROOM	LOBBY	WALL MOUNT	330		18	80	67	56	53.6	8.8	7.7	68	84.9	9.4	410-A	N/A	20		208/230	1	6.95
DSSI-2	DAIKIN FTXB09AXVJU	OFFICE 101	OFFICE 101	WALL MOUNT	330		18	80	67	56	53.1	8.8	7.7	68	84.9	9.4	410-A	N/A	20		208/230	1	6.95

GENERAL NOTES:  
 A. REFER TO DIVISION 23 SPECIFICATION 'COMMON MOTOR REQUIREMENTS FOR HVAC EQUIPMENT' FOR SPECIFIC REQUIREMENTS AND SCOPE FOR CONTROL WIRING, POWER WIRING, DISCONNECT AND STARTING MEANS.

- NOTES:
1. PROVIDE MFR.'S WIRED CONTROLLER/THERMOSTAT.
  2. INDOOR UNIT IS POWERED BY OUTDOOR UNIT.
  3. PROVIDE INTEGRAL CONDENSATE PUMP.

### DUCTLESS SPLIT SYSTEM OUTDOOR UNITS - HEAT PUMP

UNIT NO.	MANUFACTURER & MODEL NUMBER	SERVICE	LOCATION	COOLING CAPACITY (MBH)	HEATING CAPACITY (MBH)	EER2	HSPF2	SEER2	REFRIG. TYPE	AMBIENT AIR TEMP (°F)		ELECTRICAL DATA						OPER. WT. (LBS)	NOTES	
										SUMMER	WINTER	MCA	MOCP	VOLT	PH	HZ	EMERG. POWER (Y/N)			
DSSO-1	DAIKIN RXB09AXVJU	IU-1	OUTSIDE	8.8	9.4	10.45	8.01	16.15	R-410A			208/230	1	60					53	
DSSO-2	DAIKIN RXB09AXVJU	IU-2	OUTSIDE	8.8	9.4	10.45	8.01	16.15	R-410A			208/230	1	60					53	

GENERAL NOTES:  
 A. REFER TO DIVISION 23 SPECIFICATION 'COMMON MOTOR REQUIREMENTS FOR HVAC EQUIPMENT' FOR SPECIFIC REQUIREMENTS AND SCOPE FOR CONTROL WIRING, POWER WIRING, DISCONNECT AND STARTING MEANS.  
 B. PROVIDE A COMPLETE REFRIGERANT PIPING SYSTEM SIZED AND INSTALLED PER MFR.'S INSTALLATION INSTRUCTIONS.

NOTES:

### EXHAUST FANS

UNIT NO.	MANUFACTURER & MODEL NUMBER	SERVICE	LOCATION	FAN TYPE	DRIVE	CFM	ESP (IN. WG)	FAN RPM	MAX. SOUND (SONES)	BACKDRAFT DAMPER (Y/N)	INTERLOCK / CONTROLLED BY	STARTING MEANS	MOTOR DATA			ELECTRICAL DATA				OPER. WT. (LBS)	NOTES
													BHP	HP	RPM	VOLT	PH	HZ	EMERG. POWER (Y/N)		
EF-1	WHISPERFIT EZ FV-08-11VFS	TOILET EXHAUST	BATHROOM	CABINET	DIRECT	50	0.3	1,123	0.6	Y	Light Switch	ECM	0.0	0.1	1,123	120	1	60	Y	11	1,2,3,5,6,12,13

GENERAL NOTES:  
 A. REFER TO DIVISION 23 SPECIFICATION 'COMMON MOTOR REQUIREMENTS FOR HVAC EQUIPMENT' FOR SPECIFIC REQUIREMENTS AND SCOPE FOR CONTROL WIRING, POWER WIRING, DISCONNECT AND STARTING MEANS.  
 B. FOR FANS WITH MOTORS THAT ARE 120V AND 1 HP OR LESS, PROVIDE CONTROL RELAY TO ALLOW INTERLOCKING WITH AIR HANDLING UNITS OR OTHER CONTROL SYSTEMS WHERE REQUIRED.

- NOTES:
1. SINGLE POINT ELECTRICAL CONNECTION.
  2. PROVIDE POINT ELECTRICAL CONNECTION.
  3. PROVIDE INTEGRAL DISCONNECT.
  4. ALUMINUM CONSTRUCTION.
  5. COORDINATE ALL ELECTRICAL REQUIREMENTS WITH ELECTRICAL CONTRACTOR PRIOR TO ORDERING...
  6. PROVIDE SPEED CONTROLLER MOUNTED ON FAN AT ACCESSIBLE LOCATION.
  7. COORDINATE MOTOR LOCATIONS WITH FINAL SITE CONDITIONS FOR MAINTENANCE ACCESSIBILITY.
  8. FAN SHALL BE HIGH WIND/HURRICANE RATED.
  9. MANUALLY ADJUSTABLE BLADE PITCH WITH STRAIGHTENING VALVES.
  10. HIGH TEMP. RATED AND UL LISTED FOR 285°F/4 HOURS AND 500°F/1 HOUR.
  11. 24/7 OPERATION.
  12. PROVIDE WITH INTEGRAL BACKDRAFT DAMPER.
  13. PROVIDE WITH FACTORY ALUMINUM GRILLE.
  14. 18" HIGH ROOF CURB.
  15. PROVIDE HI-PRO Z CORROSION RESISTANT SEA/COAST GRADE COATING ON ALL STEEL PARTS.
  16. VFD RATED FAN MOTOR: PREMIUM EFFICIENCY.
  17. COORDINATE ALL ACCESS TO ALL FAN COMPONENTS WITH SITE CONDITIONS.
  18. HORIZONTAL THRUST EQUAL TO MASON INDUSTRIES WB MODEL. INSTALL BETWEEN FAN AND DISCHARGE DUCT.

AVIS CAR RENTAL  
 WESLEY CHAPEL LOCATION



4708 Capital Circle NW  
 Tallahassee FL, 32303  
 (850) 205-2150

PROFESSIONAL SEAL(S)

CONSULTANT INFORMATION



• BUILDINGS • EARTH & ENVIRONMENT • ENERGY • INDUSTRIAL • INFRASTRUCTURE • SUSTAINABILITY •

EXP U.S. Services Inc.  
 201 Alhambra Circle, Suite 800 | Coral Gables, FL 33134  
 t: +1.305.631.2208 | exp.com  
 Cert of Auth: 29701

PROJECT TITLE

**PREMIER GROUP  
 PANAMA CITY AVIS**

**MARTIN LUTHER KING JR BLVD  
 PANAMA CITY, FL 32405**

PROPERTY OF PREMIER COMMERCIAL GROUP  
 - FOR OFFICIAL USE ONLY -  
 - DO NOT REMOVE THIS NOTE -

PROPERLY DESTROY DOCUMENTS WHEN NO LONGER NEEDED. GENERAL CONTRACTOR TO VERIFY ALL DIMENSIONS AND CONDITIONS AT JOB SITE PRIOR TO CONSTRUCTION. GENERAL CONTRACTOR SHALL NOTIFY ISD OF ANY DISCREPANCIES PRIOR TO CONSTRUCTION AND / OR ORDERING MATERIALS.

REVISIONS

No.	Revision	By	Date
2	Revision No. 2		11/14/2024
1	Revision No. 1		05/24/2024

DRAWING TITLE

**MECHANICAL  
 SCHEDULES**

PROJECT PHASE

**PRELIMINARY DESIGN**

Drawn By: **Author**

Checked By: **Checker**

Approved By: **Approver**

Issue Date: **Issue Date**

work Order No: **Specify File Name**

SHEET NO. **M300** REV. NO. **2**