

ABBREVIATIONS

AAV	AIR ADMITTANCE VALVE	HB	HOSE BIBB
ABA	ARCHITECTURAL BARRIERS ACT	HW	HOT WATER
ABS	ACRYLONITRILE BUTADIENE STYRENE PLASTIC	HWR	HOT WATER RETURN
ADA	AMERICANS WITH DISABILITY ACT	INV	INVERT
AFF	ABOVE FINISH FLOOR	IWH	INSTANTANEOUS WATER HEATER
AGA	AMERICAN GAS ASSOCIATION	LAV	LAVATORY
ANSI	AMERICAN NATIONAL STANDARDS INSTITUTE	MECH	MECHANICAL
ASHRAE	AMERICAN SOCIETY OF HEATING, REFRIGERATING, AND AIR-CONDITIONING ENGINEERS	NSF	NATIONAL SCIENCE FOUNDATION
ASSE	AMERICAN SOCIETY OF SANITARY ENGINEERING	PSI	POUNDS PER SQUARE INCH
BFP	BACKFLOW PREVENTER	SAN	SANITARY
CFH	CUBIC FEET PER HOUR	SK	SINK
CFM	CUBIC FEET PER MINUTE	SS	STAINLESS STEEL
CO	CLEANOUT	TYP	TYPICAL
CW	COLD WATER (POTABLE)	T/P	TEMPERATURE AND PRESSURE
DCW	DOMESTIC COLD WATER	TP	TRAP PRIMER
DEG	DEGREES	U/G	UNDERGROUND
DF	DRINKING FOUNTAIN	V	VENT
DIA	DIAMETER	VTR	VENT THROUGH ROOF
DN	DOWN	W/	WITH
ELEV	ELEVATION	W	WASTE
EWC	ELECTRIC WATER COOLER	WC	WATER CLOSET (TOILET)
EWH	ELECTRIC WATER HEATER	WCO	WALL CLEANOUT
EPA	ENVIRONMENTAL PROTECTION AGENCY	WH	WALL HYDRANT
FCO	FLOOR CLEANOUT	WHA	WATER HAMMER ARRESTOR
FD	FLOOR DRAIN		
FT	FOOT OR FEET		
FV	FLUSH VALVE		
GALV	GALVANIZED		
GCO	GRADE CLEANOUT		
GPF	GALLONS PER FLUSH		
GPM	GALLONS PER MINUTE		

NOTE:
NOT ALL ABBREVIATIONS ARE USED ON THIS DRAWING

GENERAL PLUMBING NOTES

- PRIOR TO BEGINNING CONSTRUCTION, FIELD VERIFY THE EXACT LOCATION, SIZE, DEPTH, DIRECTION OF FLOW, CAPACITY, PIPE MATERIAL, AND CONDITION OF EXISTING PIPING TO ENSURE THAT PROPER CONNECTIONS TO AND EXTENSION OF SUCH UTILITIES CAN BE MADE.
- INVERT ELEVATIONS LISTED ARE APPROXIMATE. PRIOR TO CONSTRUCTION, FIELD VERIFY EXISTING CONDITIONS AND MAKE ADJUSTMENTS AS REQUIRED TO ENSURE PROPER CONNECTIONS TO UTILITIES.
- SITE INSPECTION: CONTRACTOR SHALL VISIT THE SITE OF WORK PRIOR TO SUBMISSION OF HIS BID AND THOROUGHLY FAMILIARIZE HIMSELF WITH THE WORKING CONDITIONS AND EXACT NATURE OF THE WORK. SUBMISSION OF A BID ACKNOWLEDGES FULL RESPONSIBILITY FOR PROVIDING ALL NECESSARY LABOR AND MATERIALS TO ENSURE COMPLETE, FUNCTIONAL, AND COMPLIANT SYSTEMS. FAILURE TO MEET THIS REQUIREMENT SHALL NOT BE CONSIDERED JUSTIFICATION FOR OMISSIONS, FAULTY WORK, OR THE PAYMENT OF ADDITIONAL COMPENSATION.
- CONTRACTOR SHALL COORDINATE ALL WORK WITH THE WORK OF OTHER TRADES TO AVOID CONFLICTS AND TO MINIMIZE INTERRUPTION OF SERVICES.
- ALL WORK, METHODS, AND INSTALLATIONS SHALL BE IN ACCORDANCE WITH THE PREVAILING BUILDING CODE, INSPECTION REGULATIONS AND ALL OFFICIALS HAVING JURISDICTION.
- DUE TO THE SCALE OF DRAWINGS, NOT ALL PIPING AND APPURTENANCES TO BE PROVIDED ARE SHOWN. CONTRACTOR SHALL PROVIDE SERVICES INCLUDING, BUT NOT LIMITED TO, THE FOLLOWING: PIPING INSIDE WALLS AND CHASES TO SERVE ADJACENT PLUMBING FIXTURES AND EQUIPMENT, INDIVIDUAL FIXTURE SUPPLIES AND DRAINS, PIPING OFFSETS, VALVES, TRAPS, GAUGES, STRAINERS, AND UNIONS TO ENSURE THE COMPLETE AND FUNCTIONING INSTALLATION OF FIXTURES AND EQUIPMENT.
- COORDINATE ROUTING OF PIPING BELOW SLAB WITH COLUMN FOUNDATIONS, PILINGS, GRADE BEAMS, UNDERGROUND PLUMBING, ELECTRICAL UTILITIES, AND OTHER SUB-SURFACE BUILDING ELEMENTS.
- DO NOT ROUGH-IN BASED UPON THESE DRAWINGS. REFER TO LATEST DRAWINGS PREPARED BY THE ARCHITECT. THE FINAL LOCATIONS OF ALL PIPING SHALL ALLOW INSTALLATION OF FIXTURES WITHOUT THE NEED TO FURR-OUT WALLS.
- PRIOR TO ANY ROUGH-INS, COORDINATE ALL FIXTURE AND EQUIPMENT LOCATIONS AND CONNECTION REQUIREMENTS WITH LATEST MANUFACTURER RECOMMENDATIONS AND DRAWINGS AND SPECIFICATIONS. MAKE ADJUSTMENTS AND PROVIDE SERVICES AS REQUIRED.
- VERIFY EXACT LOCATION OF EQUIPMENT PRIOR TO ROUGH-IN OF DRAINS AND CLEANOUTS.
- NO PIPING IS TO BE INSTALLED OPEN TO PUBLIC VIEW UNLESS NOTED OTHERWISE.
- DO NOT INSTALL PIPING AT LOCATIONS THAT INTERFERE WITH SERVICE ACCESSIBILITY TO EQUIPMENT.
- ALL PENETRATIONS THROUGH FLOOR SLABS AND EXTERIOR WALLS SHALL BE SEALED WATERTIGHT.
- ALL EXISTING WALLS, FLOORS, DRIVEWAYS, SIDEWALKS, PARKING AREAS, FENCING, ETC. DISTURBED DUE TO WORK DONE AND THAT ARE TO REMAIN SHALL BE REPAIRED TO CONDITION THAT IS ACCEPTABLE TO THE ARCHITECT/ENGINEER AND OWNER.
- COORDINATE ROUTING OF PIPING IN CEILING SPACES WITH MECHANICAL AND ELECTRICAL EQUIPMENT, DUCTWORK AND CONDUIT. INSTALL TO CONSERVE HEADROOM AND TO CREATE MINIMUM INTERFERENCE WITH USE OF SPACE. SHOULD A CONFLICT OCCUR THE CONTRACTOR SHALL NOTIFY THE ARCHITECT/ENGINEER PRIOR TO INSTALLING AN ALTERNATE PIPING PLAN. GROUP PIPING AT COMMON ELEVATIONS WHENEVER PRACTICAL.
- ALL VALVES INDICATED ON DRAWINGS SHALL BE LINE-SIZED (THE SAME SIZE AS THE PIPE THEY SERVE) UNLESS NOTED OTHERWISE.
- PROVIDE LOCKING ACCESS PANELS ACCEPTABLE TO ARCHITECT/OWNER AS REQUIRED TO ENSURE ACCESS TO VALVES AND WATER HAMMERS.
- PROVIDE CLEANOUTS IN ADDITION TO THOSE SHOWN AS REQUIRED BY CODE.
- UPON COMPLETION OF WORK, THOROUGHLY ROD AND FLUSH OUT ALL GRAVITY DRAINAGE PIPING TO ENSURE IT IS FREE FROM BLOCKAGES AND FLOWING FREELY.
- PROVIDE PIPE CONNECTIONS AND VIBRATION ISOLATORS FOR INTERNALLY ISOLATED MECHANICAL EQUIPMENTS.
- COMPLY WITH MSS SP-58 (PIPE HANGERS AND SUPPORTS-MATERIALS, DESIGN, AND MANUFACTURE), MSS SP-69 (PIPE HANGERS AND SUPPORTS-SELECTION AND APPLICATION), MSS SP-89 (PIPE HANGERS AND SUPPORTS-FABRICATION AND INSTALLATION) FOR PIPE HANGER SELECTIONS AND APPLICATIONS.
- PROVIDE WALL SLEEVE AND ESCUTCHEON PLATES FOR ALL WALL PIPING PENETRATIONS. GALVANIZED STEEL SHEET SLEEVES. PROVIDE A MINIMUM 1" ANNULAR SPACE. PROVIDE CONTINUOUS INSULATION THROUGH SLEEVE.
- PROVIDE STAINLESS STEEL SADDLE ON INSULATED PIPE.
- PROVIDE STAINLESS STEEL HARDWARE ON ALL EXTERIOR VALVES.
- PROVIDE INSULATION WITH VAPOR BARRIER AND ALL PURPOSE JACKET FOR DOMESTIC COLD (DCW) AND HOT WATER (DHW) PIPING.
- ALL ITEMS PROJECTING THROUGH ROOF SHALL BE FLASHED AND COUNTER-FLASHED A MINIMUM OF 12" AND SHALL BE PAINTED TO MATCH ROOF COLOR. PROVIDE APPROVED SEALS AT ALL ROOF PENETRATIONS. COORDINATE WITH ARCHITECTURAL.
- PROVIDE VACUUM BREAKERS AT FIXTURES WITH HOSE THREAD CONNECTIONS.
- UNDER SLAB SOIL, WASTE AND VENT PIPING PASSING TO UNDERSIDE OR THROUGH FOUNDATION FOOTING, WALL OR GRADE BEAM SHALL BE PROVIDED WITH A RELIEVING ARCH OR PIPE SLEEVE - TWO PIPE SIZES GREATER THAN PIPE SIZE INDICATED ON PLANS.

- COORDINATE FINAL PIPE ROUTING AND LAYOUT WITH STRUCTURAL DRAWINGS.
- SEE RESTROOM ELEVATIONS ON ARCHITECTURAL DRAWINGS FOR PLUMBING FIXTURES' MOUNTING HEIGHT.
 - PRIOR TO SUBSTANTIAL COMPLETION OF NEW WORK AREAS, CONTRACTOR SHALL HAVE SANITARY PLUMBING SYSTEM CLEARED OF DEBRIS OR ANY MATTER THAT WOULD INTERFERE OR PREVENT ADEQUATE CONVEYANCE OF MATERIALS FROM MOVING THROUGH AND TERMINATING INTO BUILDING OR PUBLIC DISPOSAL FACILITIES. PROVIDE BACTERIOLOGICAL TEST FOR WATER SYSTEM.
 - PROVIDE TRAP PRIMER TO ALL FLOOR DRAINS.
 - ALL EXPOSED PIPING AND FITTINGS EXCEPT THOSE LOCATED IN MECHANICAL AND CUSTODIAL ROOMS SHALL BE CHROME PLATED.

PROJECT BUILDING CODE REQUIREMENTS

- WORK SHALL COMPLY WITH THE FOLLOWING AGENCIES:
- 2023 FLORIDA BUILDING CODE
 - 2023 FLORIDA MECHANICAL CODE
 - 2023 FLORIDA ENERGY CONSERVATION CODE
 - 2023 FLORIDA PLUMBING CODE
 - 2023 FLORIDA FIRE PREVENTION CODE
 - AMERICAN SOCIETY OF HEATING AND REFRIGERATION ENGINEERS (ASHRAE)
 - AMERICAN SOCIETY OF PLUMBING ENGINEERS (ASPE)
 - NATIONAL FIRE PROTECTION ASSOCIATION (NFPA)
 - 2020 NFPA 70 NATIONAL ELECTRICAL CODE
 - NFPA 101 LIFE SAFETY CODE

PLUMBING LEGEND

	SANITARY PIPING (SAN)		ELBOW TURN UP
	VENT PIPING (V)		ELBOW TURN DOWN
	COLD WATER SUPPLY PIPING (DCW)		BOTTOM CONNECTION
	HOT WATER SUPPLY PIPING (DHW)		TOP CONNECTION
	HOT WATER RETURN PIPING (DHW)		GATE VALVE
	HOT WATER RETURN PIPING (DHW)		BALL VALVE
	HOT WATER RETURN PIPING (DHW)		BUTTERFLY VALVE
	INTERIOR HOSE BIBB (HB) OR EXTERIOR WALL HYDRANT (WH)		BALANCING VALVE
	WALL CLEANOUT (WCO)		SPRING CHECK VALVE
	FLOOR CLEANOUT (CO)		PRESSURE REDUCING VALVE
	FLOOR DRAIN (FD)		TEMP/PRESSURE (T/P) RELIEF VALVE. PIPE FULL SIZE DISCHARGE TO FLOOR DRAIN.
	GRADE CLEANOUT (GCO)		UNION
	VENT THRU ROOF (VTR)		GLOBE VALVE
	WATER HAMMER ARRESTOR (WHA)		GAS COCK
	MIXING VALVE (MV)		STRAINER WITH BLOW DOWN GATE VALVE FULL SIZE OF STRAINER AND 3/4" HOSE END CONNECTION WITH CAP
	TITLE SCALE		PRESSURE GAUGE
	DESCRIPTION DWG SCALE, SCHEMATIC, OR NOT TO SCALE (NTS)		TEMPERATURE GAUGE
	BUILDING SECTION		SHEET NOTE
	BUILDING ELEVATION		DETAIL NOTE
			REVISION # AND CLOUD

PROJECT SPECIFIC NOTES

DRAINAGE, WASTE, AND VENT (DWV) PIPING NOTES:

PIPE SHALL BE PVC DWV TYPE. ALL INDIRECT WASTE LINES SHALL HAVE A MINIMUM OF 2" AIR GAP OR TWICE THE EFFECTIVE DRAIN DIAMETER (WHICH EVER IS LARGER) WHERE IT TERMINATES AT THE RECEPTOR.

ALL HUB/FLOOR/TRENCH DRAINS AND FLOOR SINKS SHALL BE PROVIDED WITH DEEP SEAL TRAPS.

SET TOP RIM OF ALL IN-FLOOR FIXTURES (DRAINS, FLOOR SINKS, CLEAN-OUTS, ETC.) FLUSH WITH FINISHED FLOOR UNLESS DRAWINGS EXPLICITLY SPECIFY OTHERWISE.

CLEANOUTS LOCATED IN TRAFFIC-BEARING AREAS SHALL BE INSTALLED WITH A VEHICLE TRAFFIC BEARING BOX. THE BOX SHALL BE SET IN CONCRETE SLAB, EXTENDING AT LEAST 12" FROM THE PERIMETER OF THE CLEANOUT. THE SLAB SHALL BE NOT LESS THAN 6" THICK. THE CONCRETE SHALL BE NOT LESS THAN 2,500 PSI.

DOMESTIC COLD AND HOT WATER PIPING NOTES:

PLUMBING CONTRACTOR SHALL INSTALL SHOCK ABSORBERS/WATER HAMMER ARRESTORS TO MEET ALL STATE AND LOCAL CODE REQUIREMENTS.

PLUMBING CONTRACTOR SHALL INSTALL WATER SUPPLY PIPES SO THAT NO PIPE JOINTS ARE UNDER FLOOR SLAB. ALL JOINTS WILL BE ABOVE THE FLOOR IN ACCESSIBLE WALLS.

ALL NEW HOT AND COLD-WATER PIPING IN WALLS, ABOVE CEILINGS, AND EXPOSED SHALL BE INSULATED WITH AN INSULATION HAVING A MAXIMUM K FACTOR OF 0.28 @ 75°F MEAN TEMPERATURE FOR 2" WALL, FLEXIBLE ELASTOMERIC THERMAL TYPE, CLOSED CELL INSULATION SIMILAR TO AP ARMAFLEX TUBE INSULATION (ARMACELL). INSULATE FITTINGS CONTINUOUSLY, BUT DO NOT INSULATE VALVE BODIES AND FIXTURE SUPPLIES.

LONGITUDINAL SEAMS SHALL BE SEALED. LATERAL SEAMS (BUT JOINTS) SHALL BE SEALED ON COLD WATER PIPES ONLY. THICKNESS SHALL BE 3/4" FOR COLD WATER PIPES UP TO 1-1/4" DIA. AND 1" FOR COLD WATER PIPES 1-1/2" DIA AND GREATER. THICKNESS SHALL BE 1" MIN. FOR ALL HOT WATER PIPES.

CONTRACTOR TO INSTALL ALL DOMESTIC HOT AND COLD-WATER PIPING LOCATED IN EXTERIOR WALLS AND CEILING ON HEATED SIDE OF THE INSULATION.

COORDINATE PIPING INSTALLATION WITH GENERAL CONTRACTOR AND VERIFY NO BUILDING HWC INSULATION IS COMPROMISED IN EXTERIOR WALLS.

HOT AND COLD WATER PIPING ABOVE GROUND SHALL BE TYPE "M" HARD DRAWN COPPER TUBING ASSEMBLED WITH WROUGHT SWEAT FITTINGS. BRANCH PIPING MAY BE CROSS-UNKED POLYTHYLENE (PEX-A) TUBING AND ASTM F-1960 COLD EXPANSION FITTINGS. ALL WATER PIPING BELOW GRADE OR BELOW CONCRETE SLAB SHALL BE TYPE "L", COPPER TUBING, JOINTS IN COPPER TUBING SHALL BE WITH SILVER SOLDER SIMILAR OR EQUAL TO SIL-PHOS.

ALL VALVES SHALL BE LINE SIZED.



Stokes Architectural, Inc.
 Architecture • Master Planning • Interior Design
 204 Cloverdale Boulevard
 Fort Walton Beach, Florida 32547
 Phone: (850) 664-2220 Fax: (850) 664-6943
 FL License #: AR0004611



Driftwood Transit Stop & Restroom - Walton County
79 Driftwood Road
Miramir Beach, Florida 32550

DESIGNED BY: AL	CHECKED BY: AL
APPROVED BY: AL	
REVISIONS:	
SHEET TITLE:	PLUMBING LEGEND AND NOTES
DATE: 5/8/2024	FILE: 21014
DRAWING NUMBER:	P-001



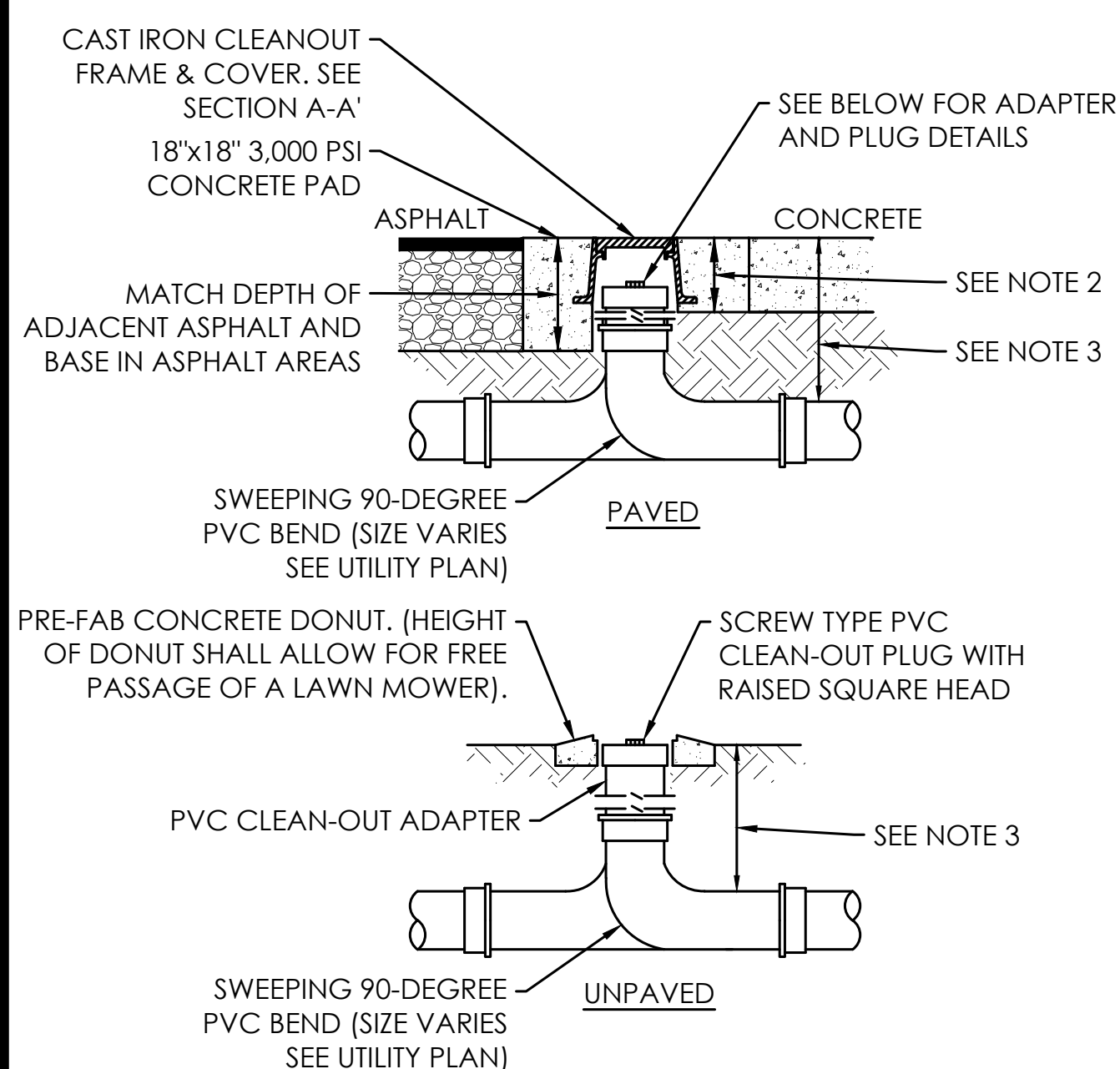
Stokes Architectural, Inc. hereby expressly reserves its common-law copyright and other property rights to these plans. Drawings are not to be reproduced, changed, or copied in any form whatsoever, nor are they to be assigned to any third party without first obtaining the express written permission and consent of Stokes Architectural, Inc.

PLUMBING FIXTURE AND EQUIPMENT SCHEDULE - WALTON COUNTY TRANSIT AND RR

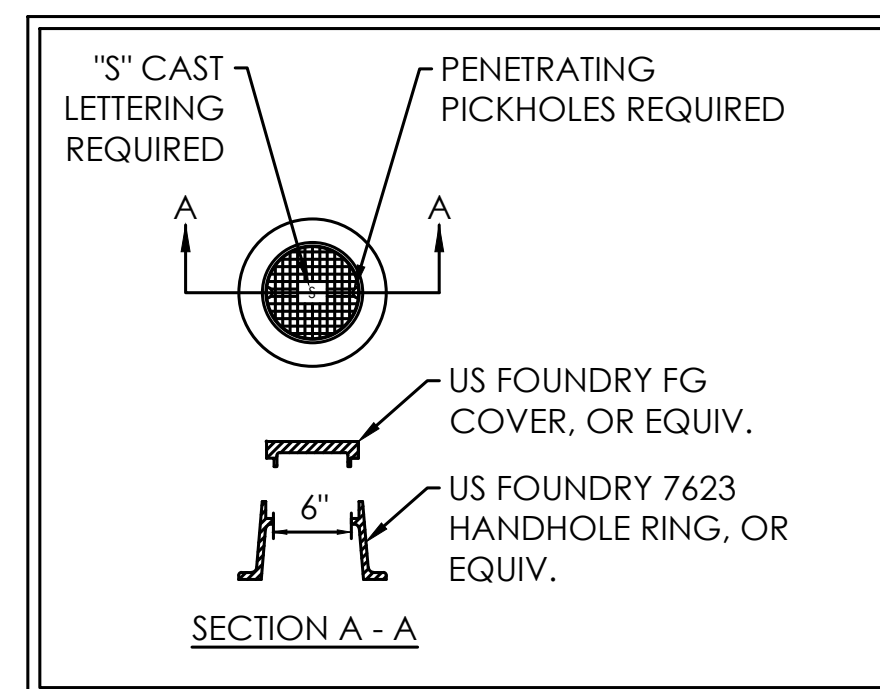
MARK	FIXTURE	BASIS OF DESIGN		CONNECTIONS			DESCRIPTION
				SAN (IN)	DCW (IN)	DHW (IN)	
P-1	WATER CLOSET	KOHLER	K-4325	3	1	-	WALL-MOUNT ELONGATED TOILET, WHITE VITREOUS CHINA, 1.28 GPF, 1-1/2" TOP INLET SPUD, WHITE HEAVY DUTY SEAT, MANUAL FLUSH VALVE, STANDARD HEIGHT, PROVIDE WITH K-7535 CP FLUSHOMETER AND ZURN ZZ1203NL4/R4 CARRIER.
P-1A	WATER CLOSET (ADA)	KOHLER	K-4325	3	1	-	WALL-MOUNT ELONGATED TOILET, WHITE VITREOUS CHINA, 1.28 GPF, 1-1/2" TOP INLET SPUD, WHITE HEAVY DUTY SEAT, MANUAL FLUSH VALVE, STANDARD HEIGHT, PROVIDE WITH K-7535 CP FLUSHOMETER AND ZURN ZZ1203NL4/R4 CARRIER, MOUNT PER ADA HEIGHT.
P-2	URINAL	KOHLER	K-4991-ET-0	2	3/4	-	WALL MOUNT URINAL, WHITE VITREOUS CHINA, 0.125 GPF, 3/4" TOP INLET SPUD, PROVIDE WITH K-7542-CP EXPOSED CHROME PLATED FLUSH VALVE AND ZURN ZZ1221 CARRIER.
P-3	LAVATORY - WALL MOUNT	KOHLER	K-2867	1-1/2	1/2	1/2	WALL MOUNT SINK, 20"x18" VITREOUS CHINA, FRONT OVERFLOW, FAUCET LEDGE, PROVIDE WITH CONCEALED ARMS CARRIER, PROVIDE WITH GRID STRAINER, P-TRAP, STOP WITH FLEXIBLE SUPPLIES, ADA-TRAP, STOP AND SUPPLY PROTECTORS, DECK MOUNTED FAUCET, PROVIDE WITH METERING FAUCET WITH GRID DRAIN, MIXING VALVE AND DECK PLATE.
		AMERICAN STD	A1340105002				
P-4	DRINKING FOUNTAIN	ELKAY	LZSL8WSVRSK	1-1/4	1/2	-	VANDAL-RESISTANT BOTTLE FILLING STATION & VERSATILE BI-LEVEL ADA COOLER, HIGH EFFICIENCY FILTERED REFRIGERATED STAINLESS, CHILLING CAPACITY OF 8.0 GPH (GALLONS PER HOUR) OF 50°F DRINKING WATER, BASED ON 80°F INLET WATER AND 90°F AMBIENT, PER ASHRAE 18 TESTING, FEATURES SHALL INCLUDE HANDS FREE, FILTER REMINDER, LAMINAR FLOW, ANTIMICROBIAL, REAL DRAIN, FURNISHED WITH SAFETY BUBBLER, ELECTRONIC BOTTLE FILLER SENSOR WITH MECHANICAL FRONT BUBBLER BUTTON ACTIVATION, PRODUCT SHALL BE WALL MOUNT (IN WALL FRAME/PLATE), FOR INDOOR APPLICATIONS, SERVING 2 STATION(S), MOUNT TO COMPLY ADA REQUIREMENTS AS REQUIRED PER ARCHITECTURAL DRAWINGS, 1.15V/1PH/60HZ, PROVIDE WITH FILTER SYSTEM KIT, LEAD-FREE DESIGN.
P-5	MOP SINK	FIAT	MSBIDTG	2	1/2	1/2	24"x24" SQUARE MOLDED STONE MOPE SERVICE BASIN, 10" DEEP, PROVIDE WITH INTEGRAL DRAIN GASKET, HOSE AND WALL BRACKET, STAINLESS STEEL MOP HANGER BRACKET, FAUCET - 8" WALL MOUNT SERVICE SINK FAUCET WITH CHROME PLATED FAUCET, VACUUM BREAKER, INTEGRAL STOPS, ADJUSTABLE WALL BRACE, PAIL HOOK.
EW-1	ELECTRIC WATER HEATER	AO SMITH	DEL-20	1-1/4	3/4	3/4	HEATER SHALL BE RATED AT 3 KW, 240V/1PH/60HZ, AND LISTED BY UL, TANK SHALL BE 20 GAL CAPACITY, HEATER SHALL HAVE 150 PSI WORKING PRESSURE AND BE EQUIPPED WITH EXTRUDED HIGH DENSITY ANODE ROD, ALL INTERNAL SURFACES OF THE HEATER EXPOSED TO WATER SHALL BE GLASS-LINED WITH AN ALKALINE BOROSILICATE COMPOSITION THAT HAS BEEN FUSED TO STEEL BY FIRING AT A TEMPERATURE RANGE OF 1600°F, ELECTRIC HEATING ELEMENTS SHALL BE MEDIUM WATT DENSITY WITH ZINC PLATED COPPER SHEATH, EACH ELEMENT SHALL BE CONTROLLED BY AN INDIVIDUALLY MOUNTED THERMOSTAT AND HIGH TEMPERATURE CUTOFF SWITCH, THE OUTER JACKET SHALL BE OF BAKED ENAMEL FINISH AND SHALL BE PROVIDED WITH FULL SIZE CONTROL COMPARTMENT FOR PERFORMANCE OF SERVICE AND MAINTENANCE THROUGH HINGED FRONT PANELS AND SHALL ENCLOSE THE TANK WITH FOAM INSULATION, THE DRAIN VALVE SHALL BE LOCATED IN THE FRONT FOR EASE OF SERVICING, HEATER TANK SHALL HAVE A THREE YEAR LIMITED WARRANTY AS OUTLINED IN THE WRITTEN WARRANTY, FULLY ILLUSTRATED INSTRUCTION MANUAL SHALL BE INCLUDED.
MV	MIXING VALVE	LEONARD	370-LF	-	3/4	3/4	LEAD FREE THERMOSTATIC POINT OF USE MIXING VALVE, BRONZE BODY, VANDAL RESISTANT LOCKED TEMPERATURE ADJUSTMENT CAP, INTEGRAL CHECK VALVES ON HOT AND COLD INLETS, MIN. FLOW: 0.5 GPM, PROVIDE WITH MOUNTING BRACKET, BALL VALVES, DIAL THERMOMETER AND TEE, CHROME PLATED, PRESSURE DROP 10 PSI @ 6 GPM, ASSE 1017 AND 1070 CERTIFIED.
FD	FLOOR DRAIN	WADE	1100-STD	3	1/2	-	CAST IRON BODY FLOOR DRAIN WITH ROUND TOP AND TRAP PRIMER CONNECTION, NICKEL BRONZE STRAINER TOP FINISH, PROVIDE WITH TRAP PRIMER CONNECTION.
CO	FLOOR CLEANOUT	WADE	8000-STD	SEE FLP		-	ADJUSTABLE FLOOR CLEANOUT WITH BOTTOM OUTLET, CLEANOUT GASKETED PLUG, ROUND TOP AND SATIN NICKEL BRONZE TOP FINISH, SCORIATED COVER.
WCO	WALL CLEANOUT	ZURN	Z1446	SEE FLP		-	WALL CLEANOUT WITH ROUND WALL ACCESS COVER AND POLISHED STAINLESS STEEL COVER.
HB	HOSE BIBB	WOODFORD	24	-	3/4	-	ANTI SIPHON, VACUUM BREAKER, CHROME FINISH, WHEEL HANDLE AND LOOSE TEE KEY.

NOTES:

- PROVIDE WITH ALL REQUIRED ACCESSORIES AND FITTINGS FOR A COMPLETE INSTALLATION.
- PROVIDE WATER HAMMER ARRESTORS ON COLD AND HOT WATER SUPPLY BRANCHES, REFER TO WATER HAMMER ARRESTOR SCHEDULE.
- REFER TO ARCHITECTURAL DRAWINGS FOR ALL PLUMBING FIXTURES' MOUNTING HEIGHT, COORDINATE WITH ADA REQUIREMENTS.
- PROVIDE FULL SIZE WATER AND SANITARY PIPING TO EACH FIXTURE UNLESS NOTED OTHERWISE.
- UNLESS NOTED OTHERWISE, PROVIDE BASIS OF DESIGN MANUFACTURER AND MODEL OR APPROVED EQUAL WITH PERFORMANCE, COMPONENTS AND TRIM OPTIONS WHICH EXCEED OR EQUAL TO BASIS OF DESIGN.
- ALL EXPOSED DOMESTIC WATER AND P-TRAP BELOW SINK SHALL BE CHROME PLATED.
- COORDINATE POWER REQUIREMENTS WITH ELECTRICAL.

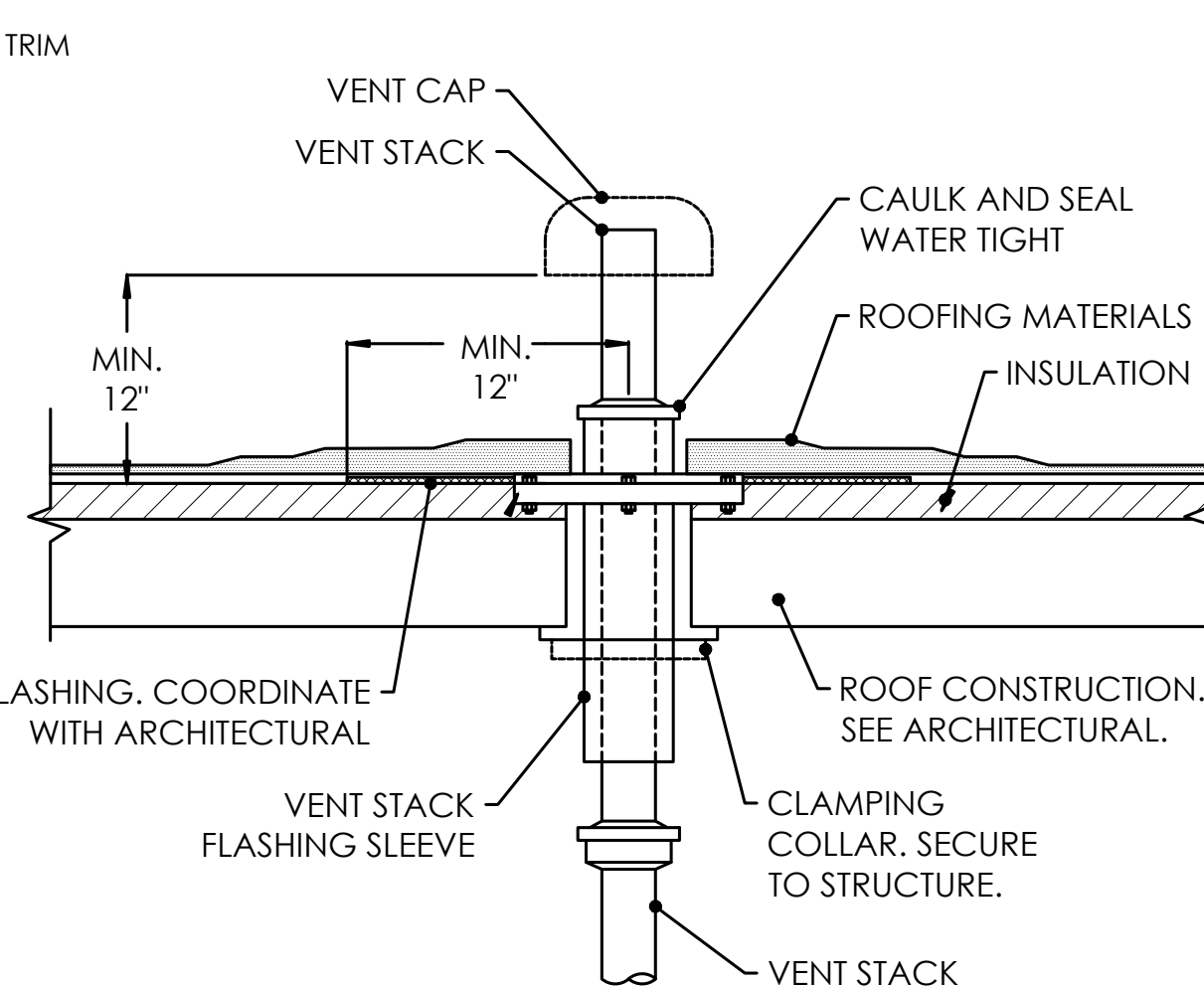


3 GRADE CLEANOUT DETAIL
NOT TO SCALE

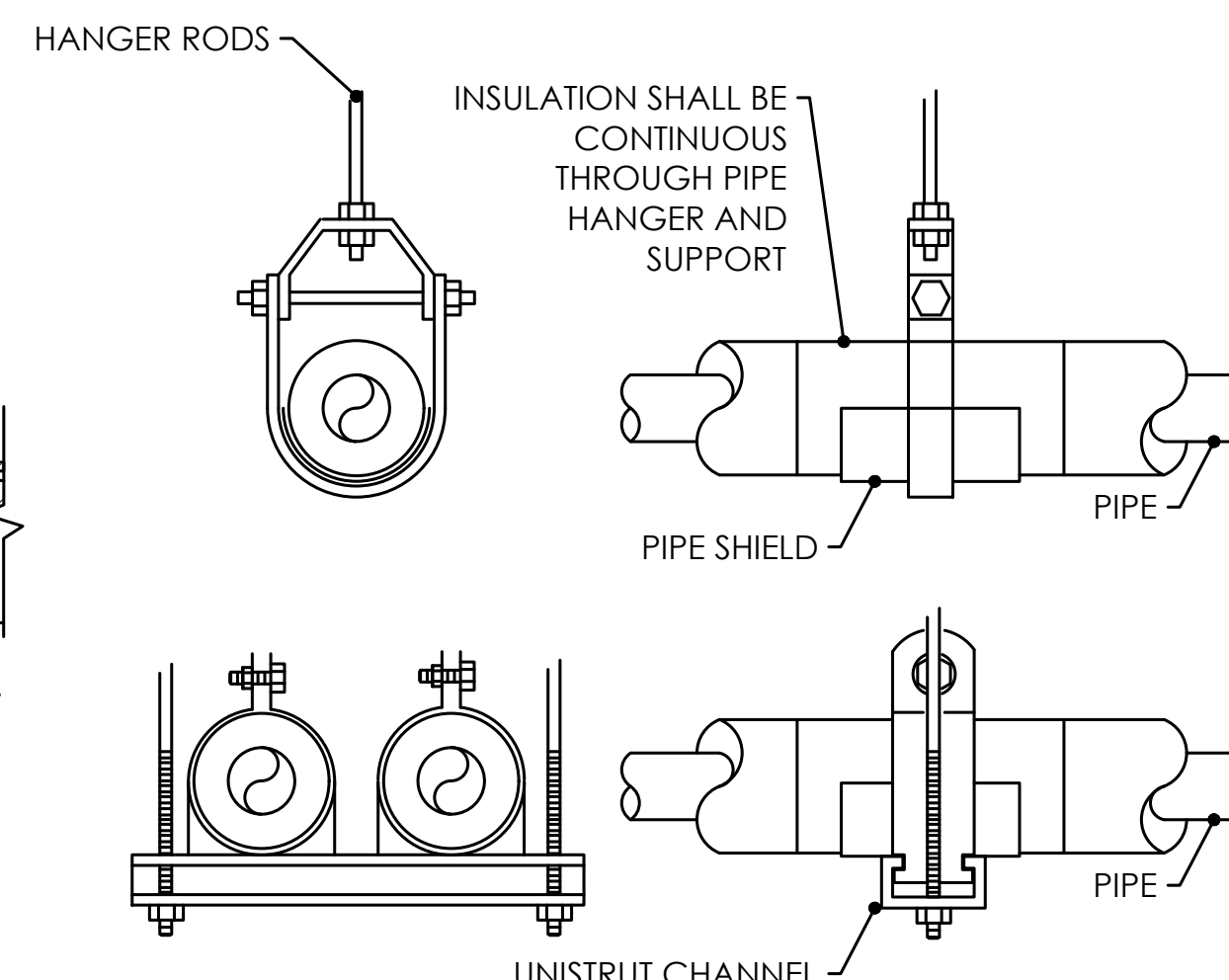


DETAIL 3 NOTES:

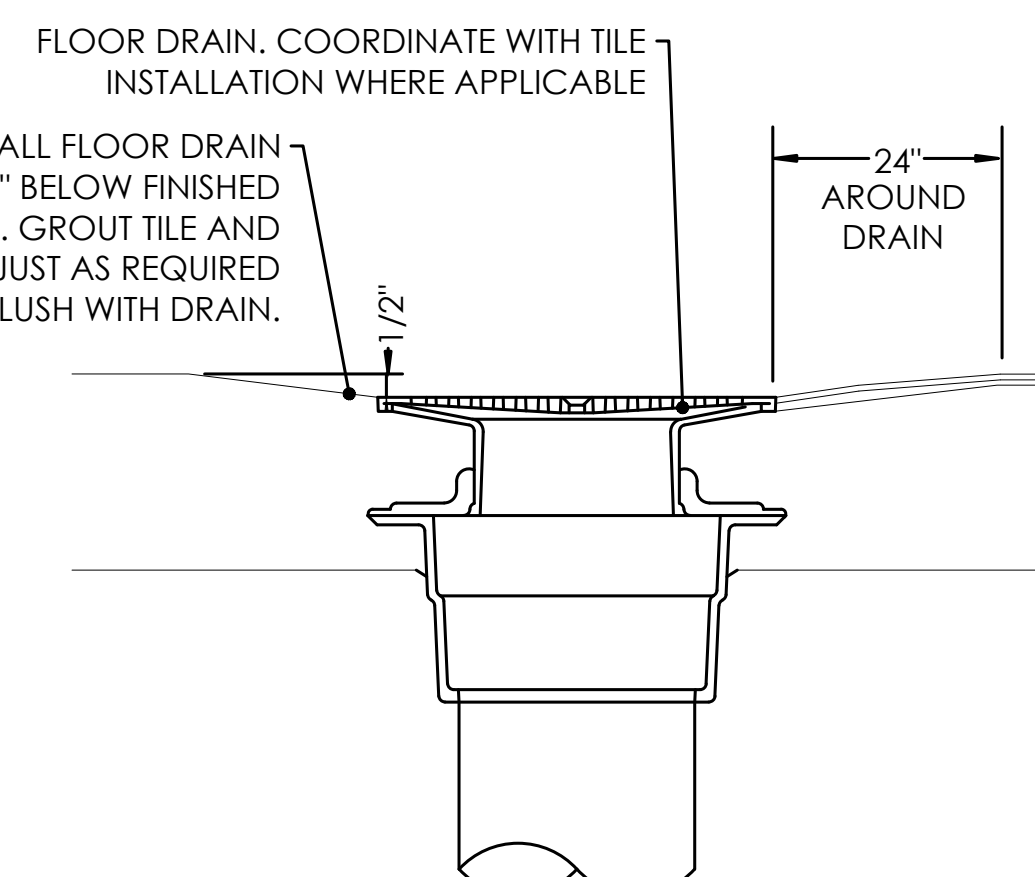
- CLEAN-OUT PIPE AND FITTINGS TO MATCH SIZE OF LINE INTO WHICH ACCESS IS BEING PROVIDED.
- MATCH DEPTH OF ADJACENT CONCRETE SIDEWALK OR PAVEMENT IN CONCRETE AREAS (MIN. THICKNESS TO BE AS REQUIRED TO EXTEND 2" BELOW BOTTOM OF CAST IRON FRAME).
- DEPTH VARIES, MIN. 30", COORDINATE WITH CIVIL.



4 VENT THRU ROOF DETAIL
NOT TO SCALE

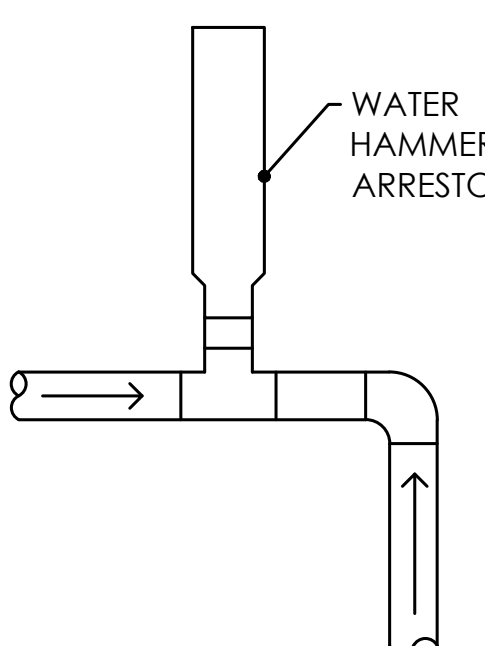


5 PIPE HANGER SUPPORT DETAIL
NOT TO SCALE



6 FLOOR DRAIN DETAIL
NOT TO SCALE

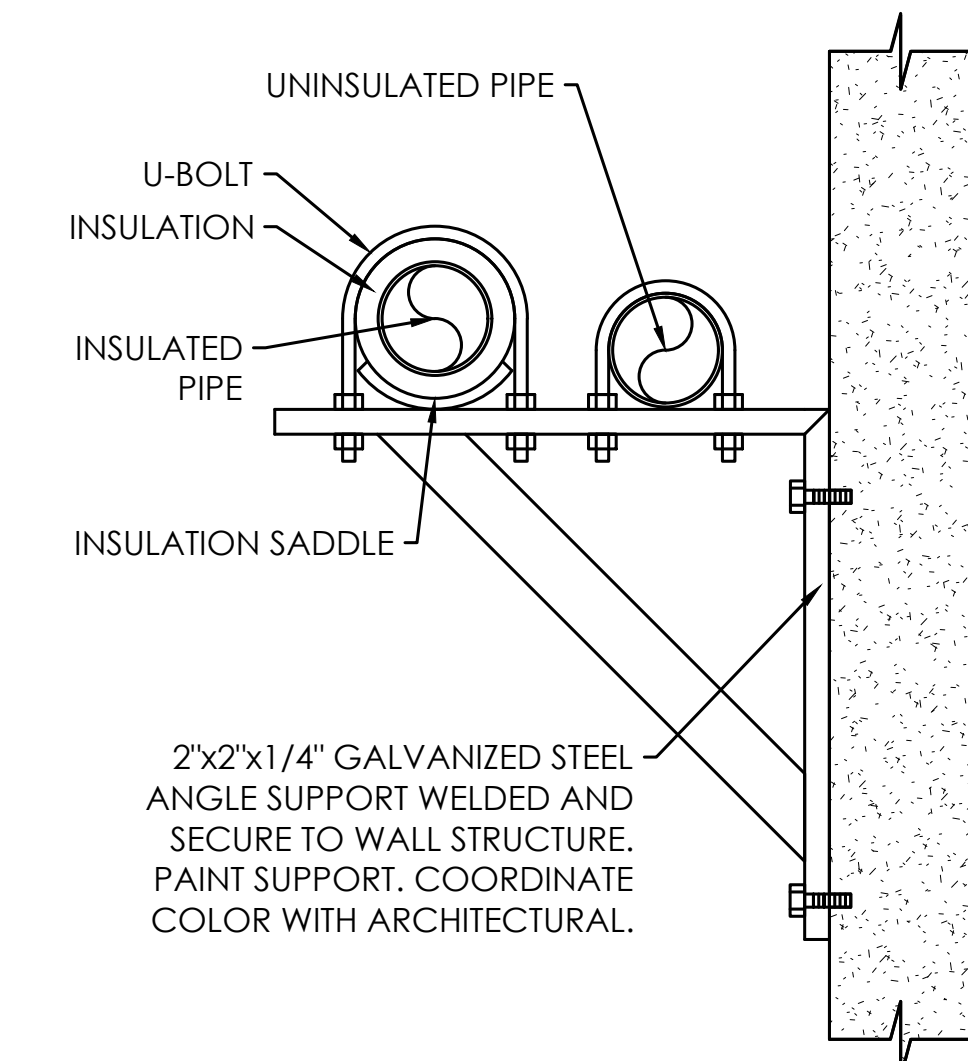
1 PIPE SUPPORT DETAIL
NOT TO SCALE



WATER HAMMER SCHEDULE				
PIPE SIZE	SIZE	AIR CHAMBER	FIXTURE UNIT CAPACITY	WATTS MODEL #
1/2"	A	60 PSIG	1 TO 11	LF15M2-A
3/4"	B	60 PSIG	12 TO 32	LF15M2-B
1"	C	60 PSIG	33 TO 60	LF15M2-C

WATER HAMMERS SHALL MEET ASSE 1010 AND BE SIZED PER PDI STANDARDS

2 WATER HAMMER ARRESTOR DETAIL
NOT TO SCALE



Stokes Architectural Inc.
Architecture • Master Planning • Interior Design
204 Cloverdale Boulevard
Fort Walton Beach, Florida 32547
Phone: (850) 664-2220 Fax: (850) 664-6943
FL License #: AR0004611

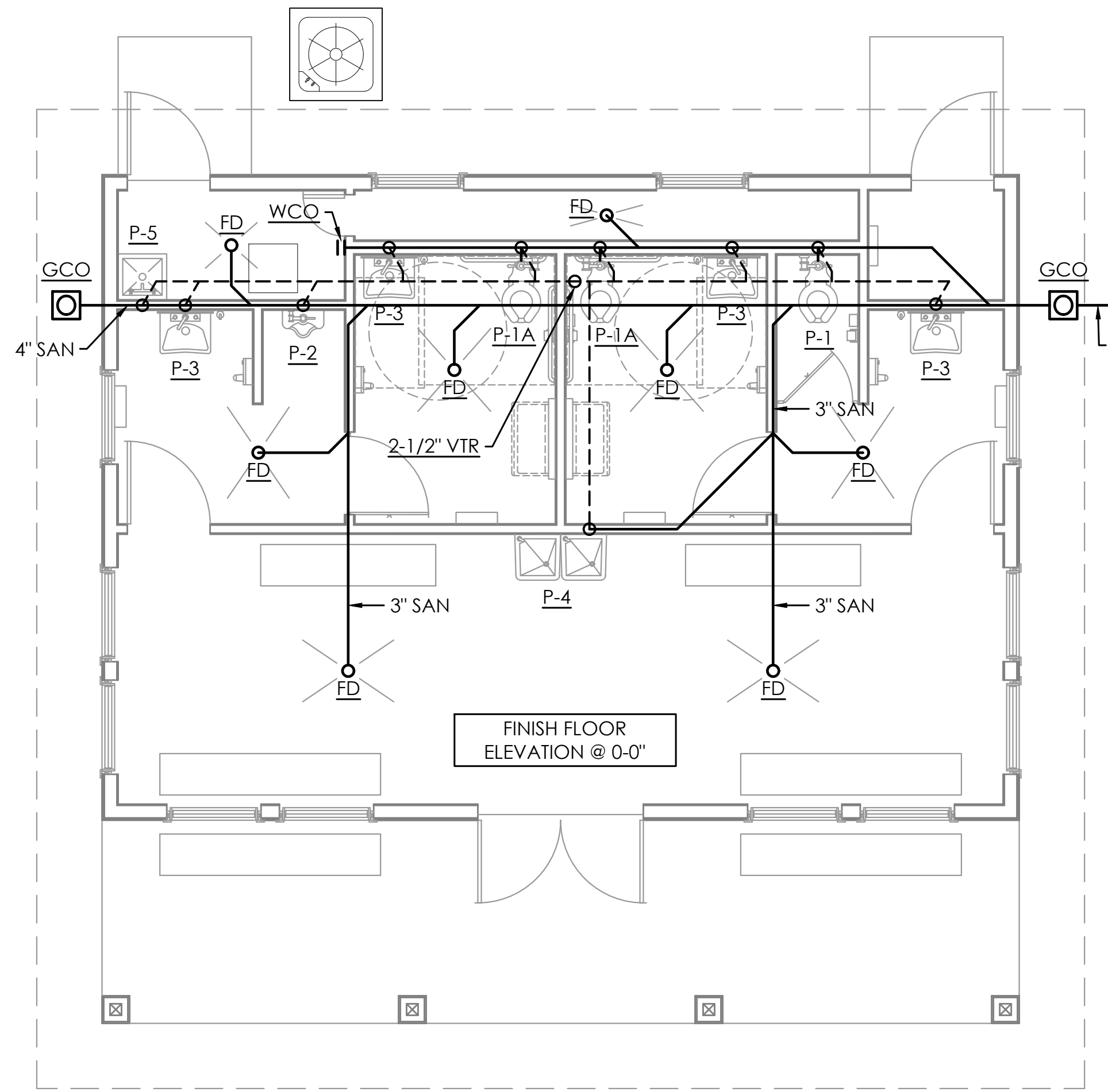
PROFESSIONAL ENGINEER
ANTON LEE
LICENSE # 82369
02-08-2024
STATE OF FLORIDA
PROFESSIONAL ENGINEER

Driftwood Transit Stop & Restroom - Walton County
79 Driftwood Road
Miramar Beach, Florida 32550

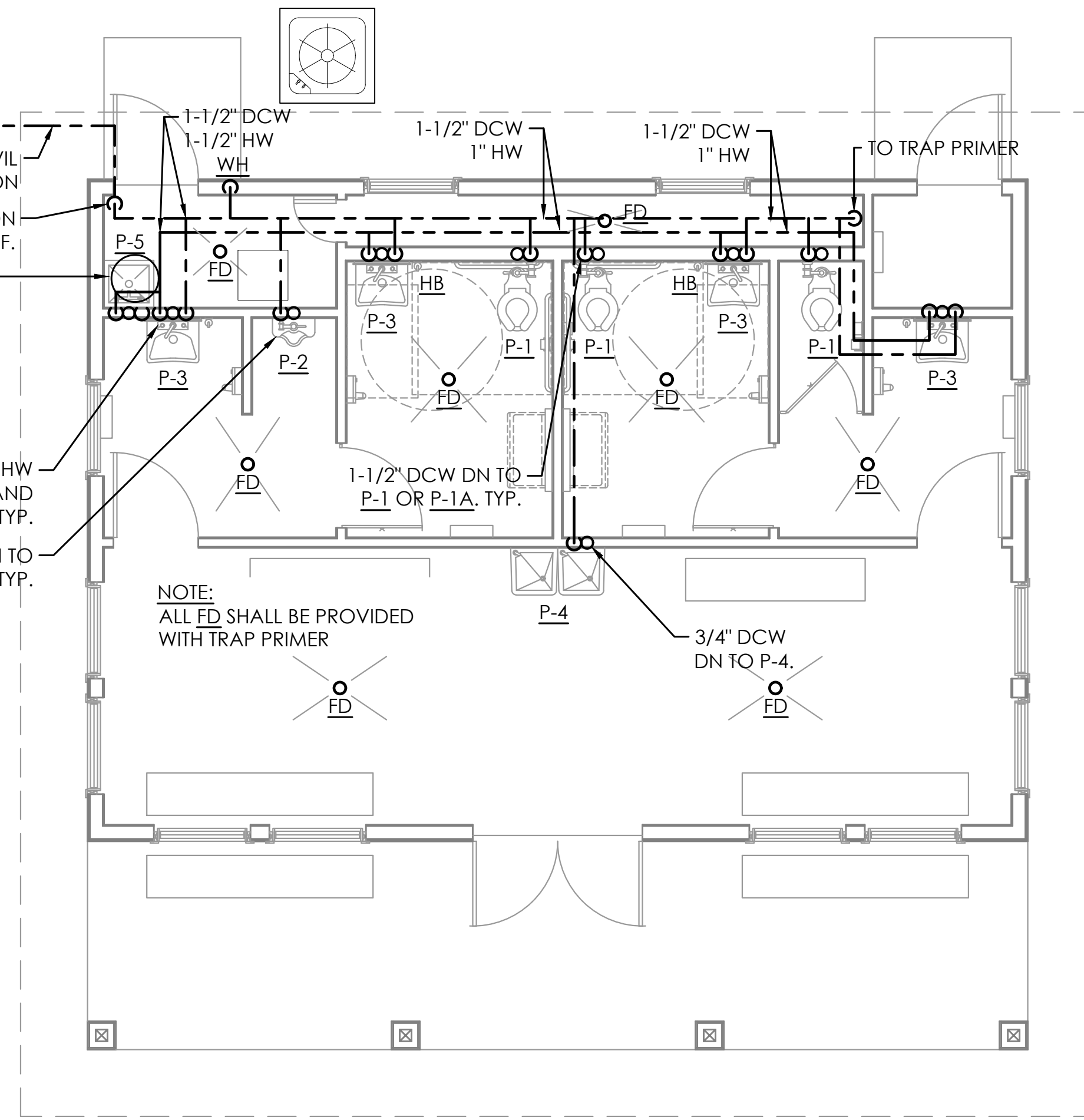
DESIGNED BY: AL	CHECKED BY: AL
APPROVED BY: AL	REVISIONS:
SHEET TITLE: PLUMBING SCHEDULES AND DETAILS	
DATE: 5/8/2024	FILE: 21014
DRAWING NUMBER: P-002	

ANTON LEE ENGINEERING
ANTON LEE ENGINEERING, LLC
1745 E. NINE MILE RD., STE. 1 #220
PENSACOLA, FL 32514
CERTIFICATE OF AUTHORIZATION:
FL 32794 | AL 5485-E
ANTON LEE, P.E.
FL IFE# 82369 | AL PE# 37427-E
PROJECT NUMBER 21-147

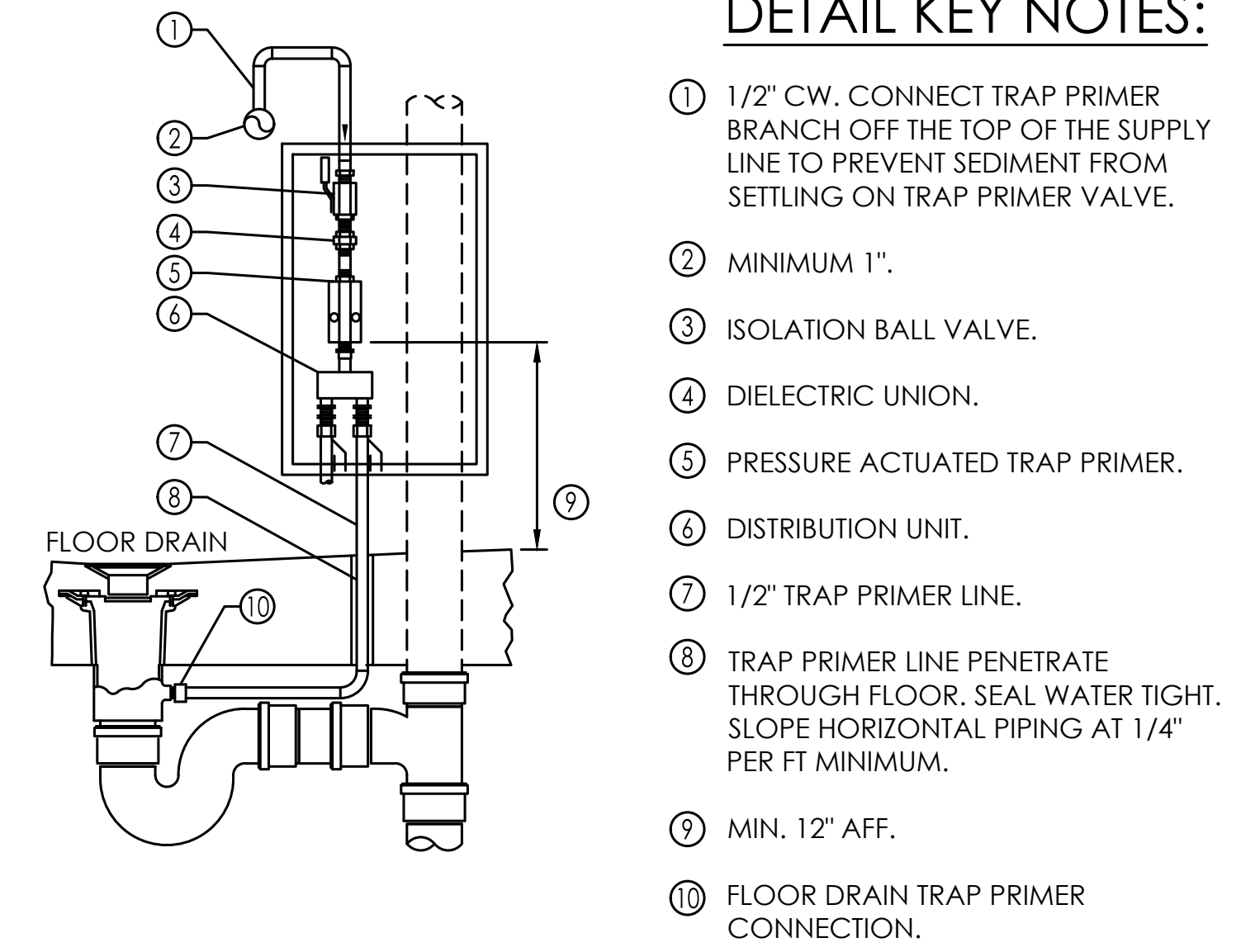
This item has been digitally signed and sealed by the professional engineer whose name and seal number are shown above. The seal number and expiration date are shown above. The signature must be verified on any electronic copies. Stokes Architectural, Inc. hereby expressly reserves its common-law copyright and other property rights to these plans. Drawings are not to be reproduced, changed, or copied in any form whatsoever, nor are they to be assigned to any third party without first obtaining the express written permission and consent of Stokes Architectural, Inc.



1 PLUMBING PLAN - SANITARY AND VENT
SCALE: 1/4"=1'-0"



2 PLUMBING PLAN - DOMESTIC WATER
SCALE: 1/4"=1'-0"

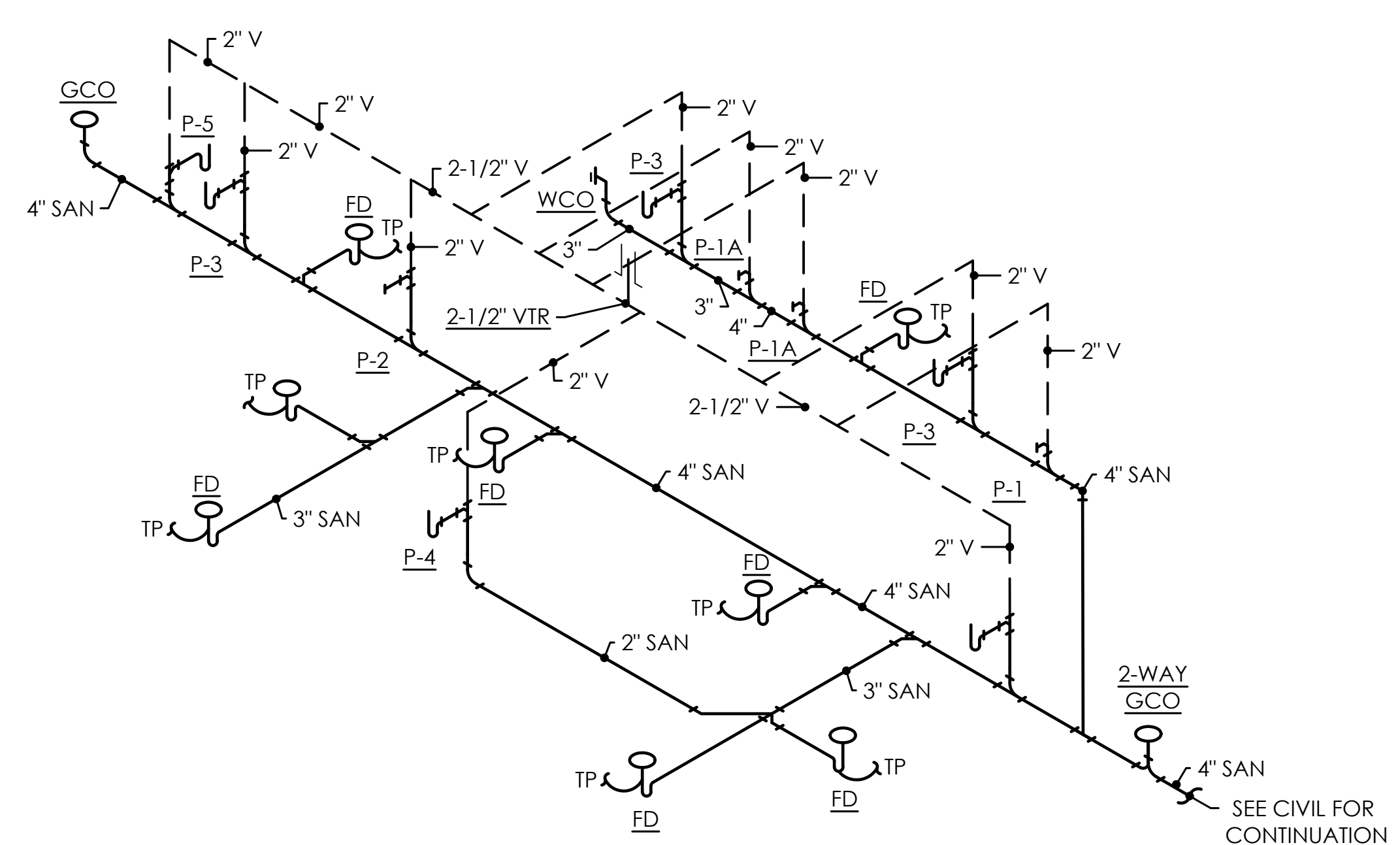


- DETAIL KEY NOTES:**
- 1/2" CW. CONNECT TRAP PRIMER BRANCH OFF THE TOP OF THE SUPPLY LINE TO PREVENT SEDIMENT FROM SETTLING ON TRAP PRIMER VALVE.
 - MINIMUM 1".
 - ISOLATION BALL VALVE.
 - DIELECTRIC UNION.
 - PRESSURE ACTUATED TRAP PRIMER.
 - DISTRIBUTION UNIT.
 - 1/2" TRAP PRIMER LINE.
 - TRAP PRIMER LINE PENETRATE THROUGH FLOOR. SEAL WATER TIGHT. SLOPE HORIZONTAL PIPING AT 1/4" PER FT MINIMUM.
 - MIN. 12" AFF.
 - FLOOR DRAIN TRAP PRIMER CONNECTION.

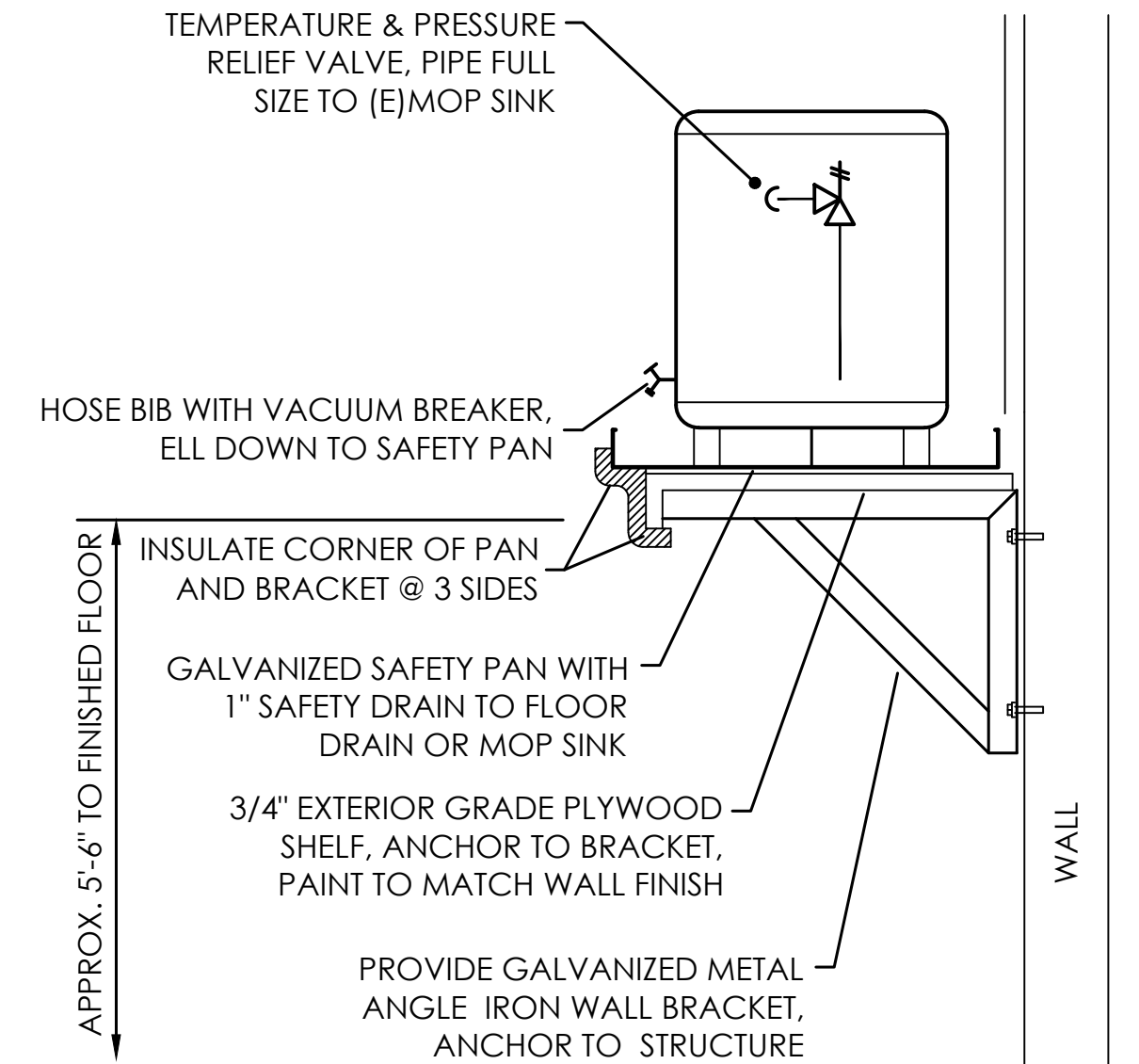
NOTES:

- PROVIDE TRAP PRIMER ON ALL FLOOR DRAINS, FLOOR SINKS AND HUB DRAINS AS NOTED.
- PROVIDE DISTRIBUTION UNIT TO SERVE MULTIPLE TRAPS.
- ACCESS DOOR: PROVIDE MIN 12"x24" LARGE ENOUGH FOR MAINTENANCE AND PARTS REMOVAL. COORDINATE LOCATION WITH ARCHITECTURAL.
- MECHANICAL ROOM INSTALLATION: ALL PIPING AND PARTS SHALL BE EXPOSED. ACCESS DOOR NOT REQUIRED. SUPPORT PIPING OFF FLOOR WITH GALVANIZED METAL FRAMING CHANNELS WITH PIPE CLAMPS AND SECURE TO FLOOR.
- INSTALL VERTICALLY AND SUPPORT PER MFR RECOMMENDATION.

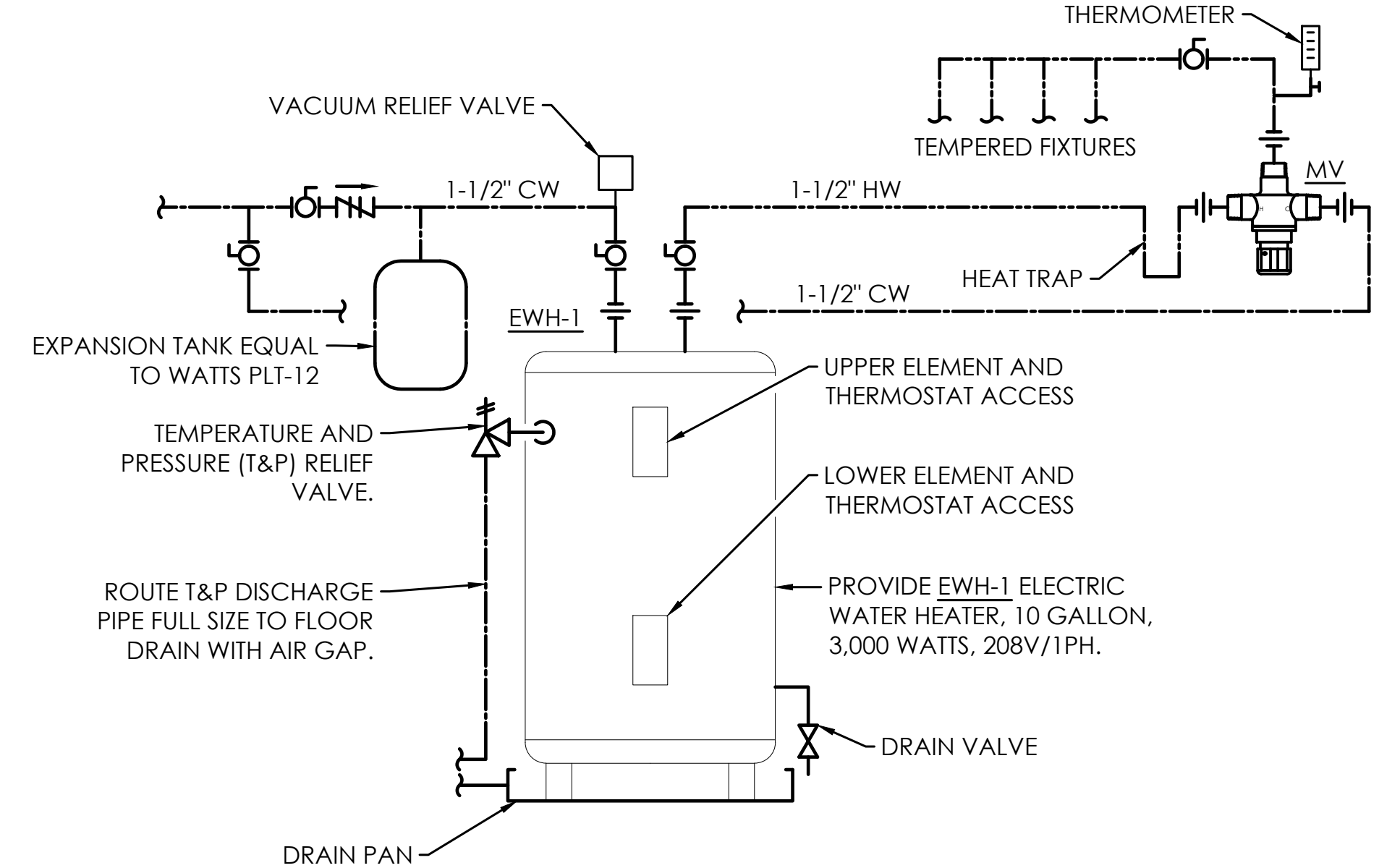
3 TRAP PRIMER DETAIL
NOT TO SCALE



6 PLUMBING RISER DIAGRAM - SANITARY AND VENT
SCHEMATIC



4 LOW BOY EWH MOUNTING DETAIL
NOT TO SCALE



5 ELECTRIC WATER HEATER + MIXING VALVE DETAIL
NOT TO SCALE

SAi
Stokes Architectural Inc.
Architecture • Master Planning • Interior Design
204 Cloverdale Boulevard
Fort Walton Beach, Florida 32547
Phone: (850) 664-2220
Fax: (850) 664-6943
FL License #: AR0004611

Driftwood Transit Stop & Restroom - Walton County
79 Driftwood Road
Miramar Beach, Florida 32550

DESIGNED BY: AL	CHECKED BY: AL
APPROVED BY: AL	
REVISIONS:	
SHEET TITLE:	PLUMBING PLAN AND DETAILS
DATE: 5/8/2024	FILE: 21014
DRAWING NUMBER:	P-101

AL
ANTON LEE ENGINEERING
ANTON LEE ENGINEERING, LLC
1745 E. NINE MILE RD., STE. 1 #220
PENSACOLA, FL 32514
CERTIFICATE OF AUTHORIZATION:
FL 32794 | AL 5485-E
ANTON LEE, P.E.
FL P.E.# 82369 | AL P.E.# 37427-E
PROJECT NUMBER 21-147