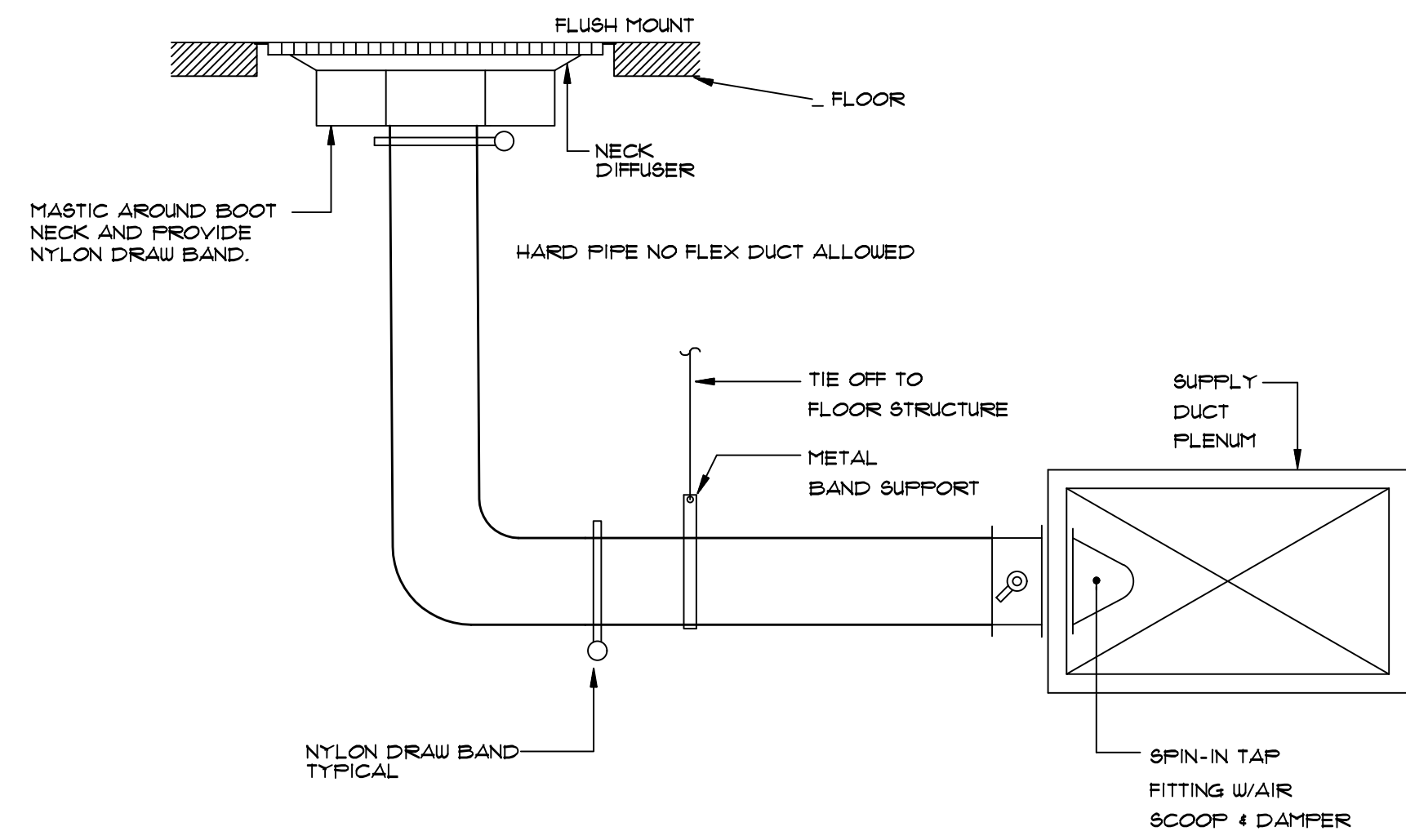
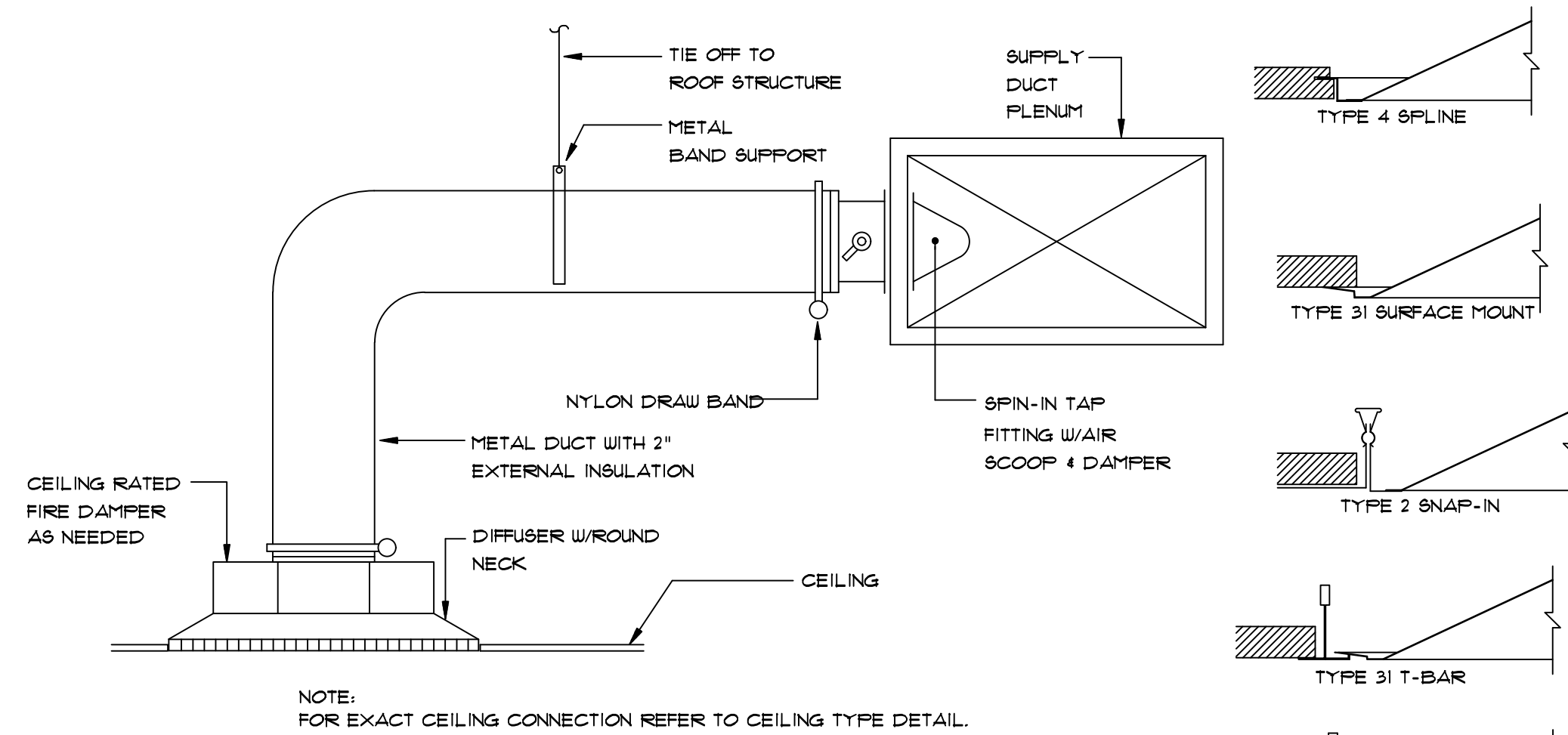


ROBIN WINTON, STATE OF FLORIDA,
 PROFESSIONAL ENGINEER, LICENSE NO.
 56206. THIS ITEM HAS BEEN DIGITALLY
 SIGNED AND SEALED BY ROBIN WINTON
 ON THE DATE INDICATED HERE.
 PRINTED COPIES OF THIS DOCUMENT
 ARE NOT CONSIDERED SIGNED AND
 SEALED AND THE SIGNATURE MUST BE
 VERIFIED ON ANY ELECTRONIC COPIES.



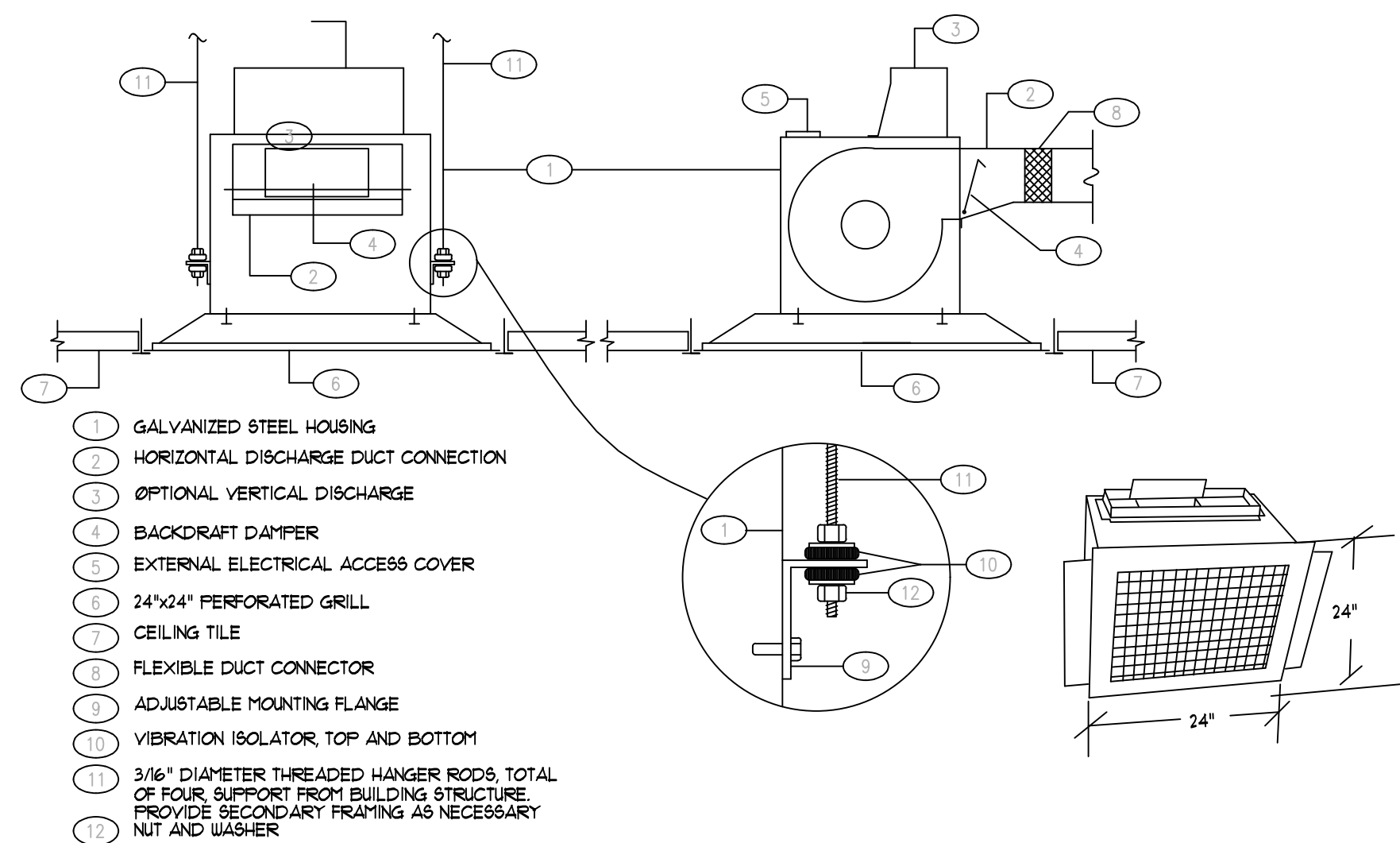
NOTE:
 FOR EXACT TAKE OFF SIZES REFER TO SCHEDULE

SUPPLY AIR DIFFUSER DETAIL
 N.T.S.

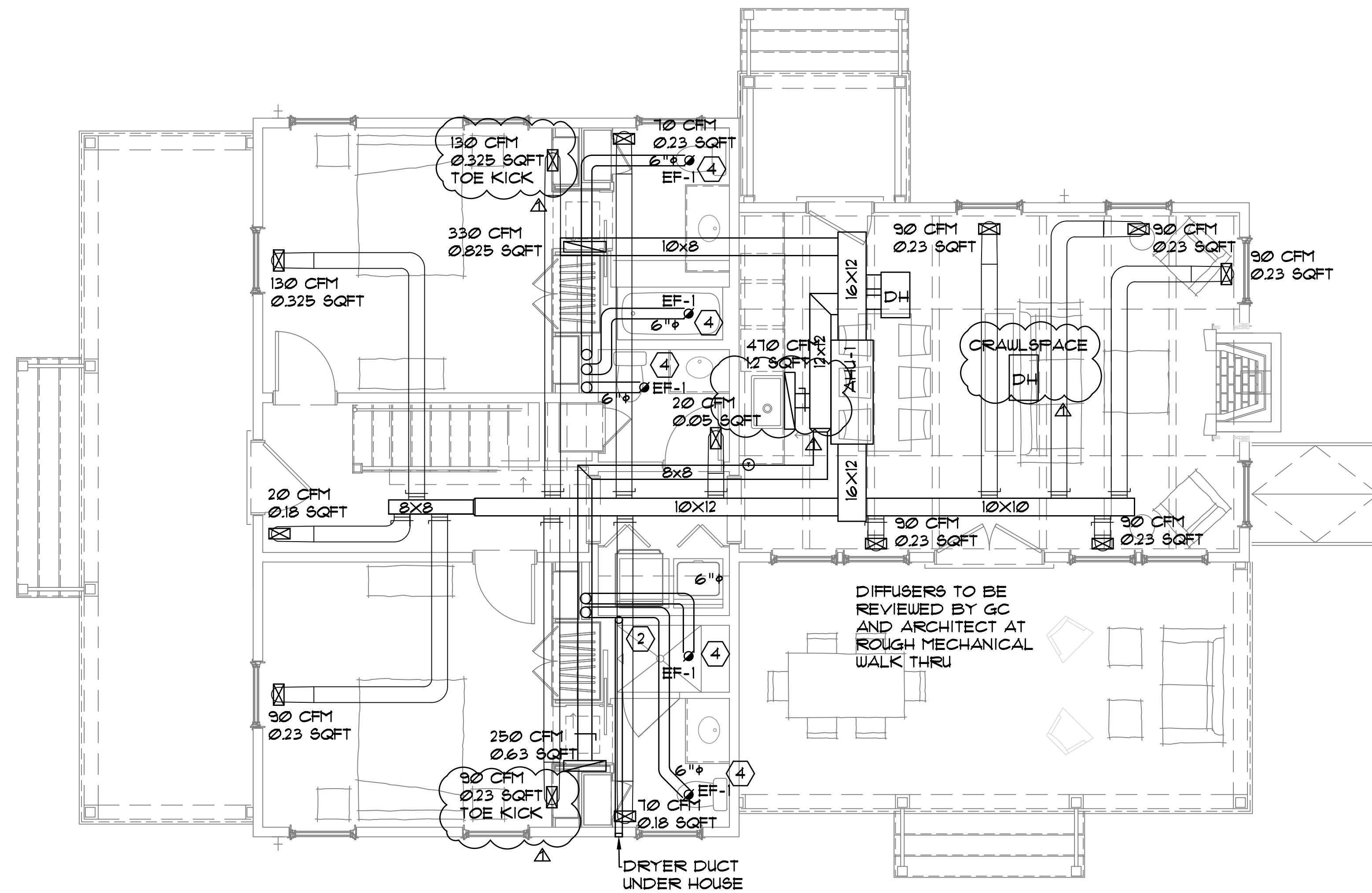


NOTE:
 FOR EXACT CEILING CONNECTION REFER TO CEILING TYPE DETAIL.

SUPPLY AIR DIFFUSER DETAIL
 N.T.S.

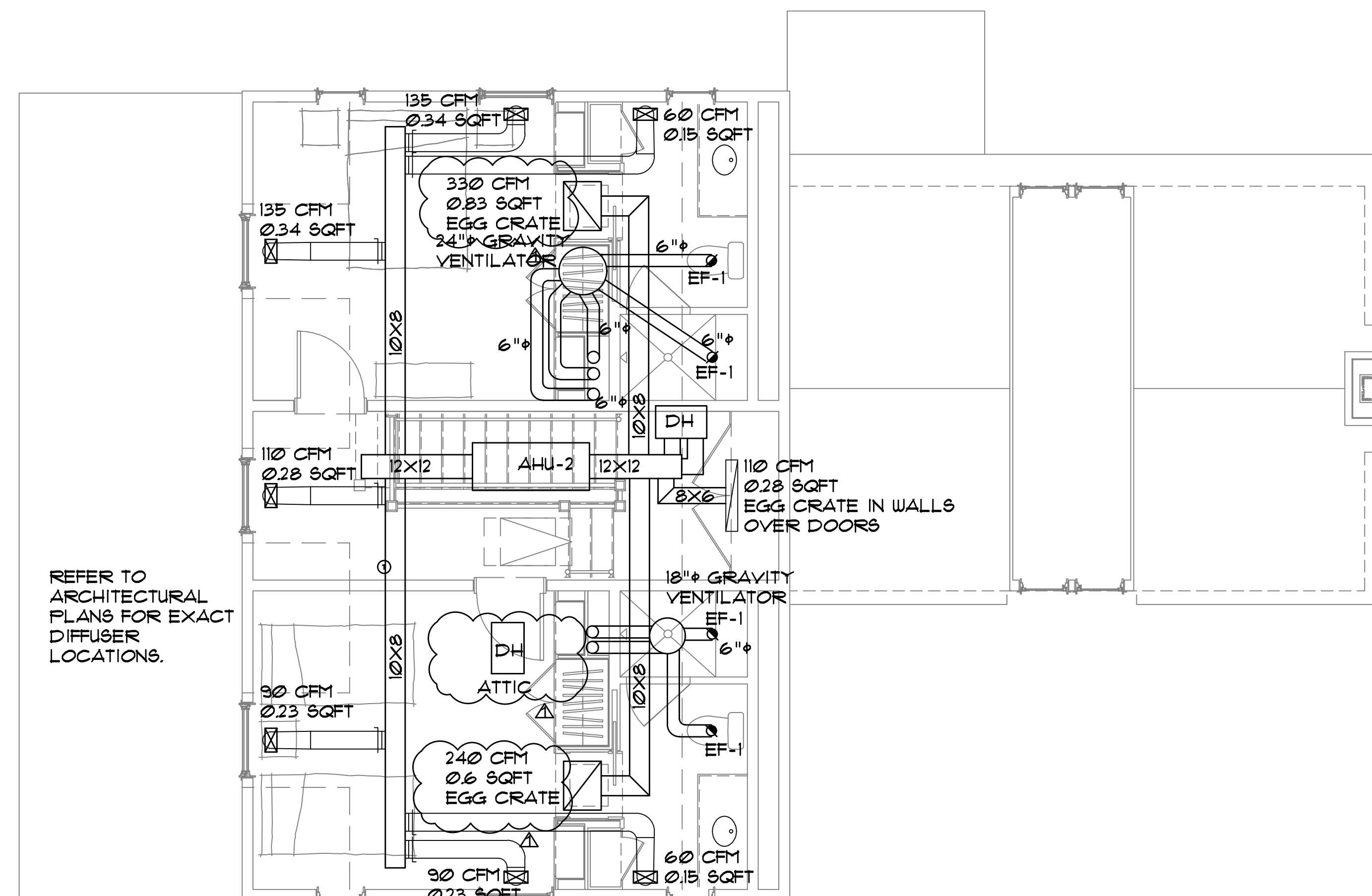


CEILING EXHAUST FAN DETAIL
 NOT TO SCALE



MECHANICAL 1ST FLOOR PLAN

SCALE: 1/4" = 1'-0"



MECHANICAL 2ND FLOOR PLAN

SCALE: 1/4" = 1'-0"

**MARTHA'S
 RETREAT
 GUEST HOUSE**

2023-101 Drawn By: RPW

Project # Checked By: RPW

13 MARCH 2024

Date

**DESIGN
 DEVELOPMENT**

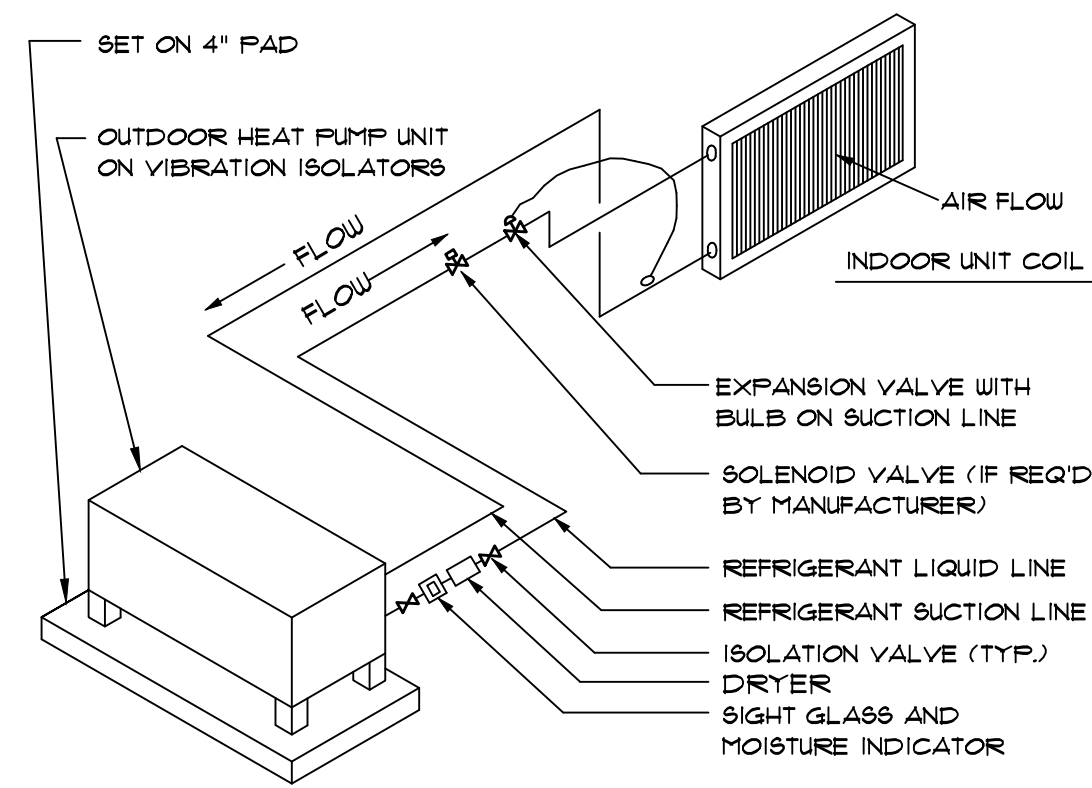
Revisions	
▲	11/20/24 DESIGN CHANGES
▲	
▲	
▲	
▲	
▲	
▲	

**MECHANICAL
 PLAN**

Tallahassee Florida

M2.0

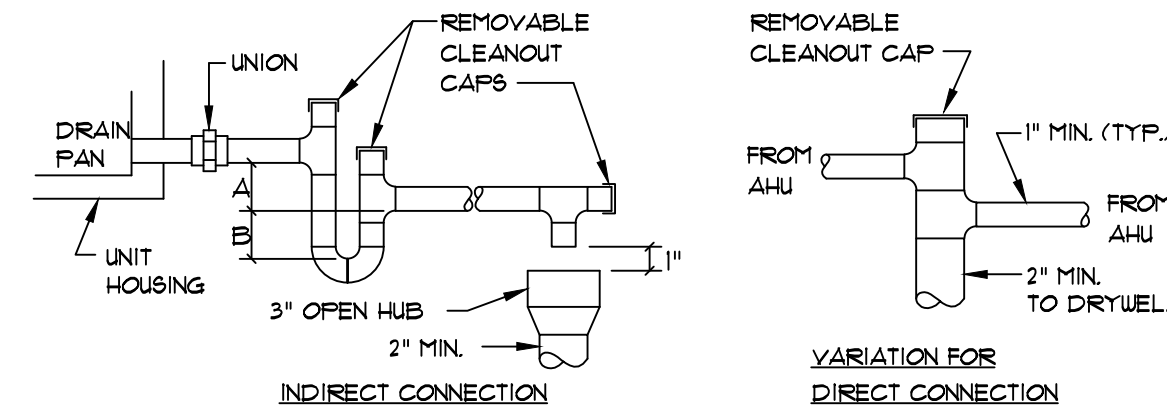
2207 WOODBINE DR, TALLAHASSEE, FL 32309
 Phone 850 567-2019



- NOTES:
1. INSULATE SUCTION LINE.
 2. PITCH ALL HORIZONTAL SUCTION PIPING A MINIMUM OF 1/2" IN 10 FEET IN DIRECTION OF FLOW.
 3. EQUIPMENT MANUFACTURER SHALL DETERMINE THE REFRIGERANT PIPE SIZES, PROVIDE SOLENOID VALVE, ACCUMULATOR AND OTHER REFRIGERANT SPECIALTIES AS RECOMMENDED BY THE MANUFACTURER.
 4. WHERE REFRIGERANT PIPING IS NOT SHOWN, ROUTE AS DIRECTLY AS POSSIBLE FROM OUTDOOR UNIT ABOVE GRADE THRU WALL OF MECHANICAL ROOM TO AHU.

**REFRIGERANT PIPING SCHEMATIC-
SPLIT SYSTEM HEAT PUMP**

N.T.S.



- NOTES:
- DRAIN LINE SHALL BE AT LEAST THE SAME SIZE AS THE CONNECTION ON THE DRAIN PAN (1" MIN.)
- DRAIN LINE SHALL SLOPE 1/8" PER FOOT (MIN)
- SEE SPECIFICATIONS FOR PIPE AND INSULATION MATERIALS.
- | UNIT TYPE | A | B |
|-----------|-----------|----|
| DRAW-THRU | X PLUS 2" | X |
| BLOW-THRU | 1" MIN. | 2X |
- WHERE X=STATIC PRESSURE IN PAN

CONDENSATE DRAIN DETAIL

N.T.S.

DRYERBOX INSTALLATION

DRYER VENTING: MECHANICAL CONTRACTOR SHALL BE RESPONSIBLE FOR RUNNING ALL DUCTWORK FOR THE DRYER EXHAUST SYSTEM. ALL CONCEALED DUCTING MUST BE RIGID METAL (GALVANIZED OR ALUMINUM) MINIMUM OF 4" IN DIAMETER. SMOOTH 30 GAL. UNOBSTRUCTED FRICTIONLESS DUCTS (NO FLEXIBLE DUCT ALLOWED IN CONCEALED AREAS). SEAL ALL JOINTS WITH FOIL BACKED PRESSURE SENSITIVE DUCT TAPE MEETING THE REQUIREMENTS OF UL 181. DUCT JOINTS SHALL BE INSTALLED SO THAT THE SLEEVE END OF THE DUCT POINTS IN THE DIRECTION OF THE AIRFLOW. DO NOT USE RIVETS OR SCREWS IN THE JOINTS OR ANYWHERE ELSE IN THE DUCT AS THESE WILL ENCOURAGE LINT COLLECTION.

DRYERBOX® RECEPTACLE (WWW.DRYERBOX.COM) SHALL BE METAL AND BE INSTALLED AS LOW AS POSSIBLE AS TO PERMIT THE PROPER AND SAFE COLLECTION OF THE DRYER TRANSITION HOSE. DRYERBOX SHOULD BE RESTING ON THE BOTTOM PLATE AND BE LOCATED AT OR NEAR THE CENTERLINE OF THE PROPOSED DRYER APPLIANCE. RIGID DUCT SHOULD PENETRATE DRYERBOX POINT 2 INCHES TO PROVIDE FOR FUTURE CONNECTION AND STORAGE OF TRANSITION HOSE. SHEETROCK SHALL BE "BUTTED" UP TO THE FIXED EXTENSION RIM AND SLIGHTLY BACK-CUT. DRYERBOX SHOULD BE CALKED AND THEN PAINTED WITH THE TRIM PAINT. FOR USAGE IN A ONE-HOUR WALL ASSEMBLY, IT IS REQUIRED THAT BATT INSULATION BE STUFFED AROUND THE DRYERBOX AND IN THE ENTIRE WALL CAVITY CELL.

LENGTH OF CONCEALED RIGID METAL DUCTING SHALL NOT EXCEED 35 FEET. DEDUCT 5 FEET FROM THE ALLOWABLE LENGTH FOR EVERY 35° RADIUS 90 DEGREE ELBOW AND TWO AND A HALF FEET FOR EVERY 45 DEGREE FITTING. DRYER VENTING SHALL BE INDEPENDENT OF ANY OTHER SYSTEMS (CHIMNEYS OR EXHAUST VENTS). TERMINATION OF DRYER VENTING MUST BE TO THE EXTERIOR WITH A PROPER HOOD OR ROOF JACK EQUIPPED WITH A BACKDRAFT DAMPER. SHALL ORIFICE METAL SCREENING SHOULD NOT BE PART OF THE HOOD OR ROOF JACK AS THIS WILL ACCELERATE LINT ACCUMULATION AND BLOCKAGE. THE HOOD OPENING SHOULD POINT DOWN AND EXHIBIT 2 INCHES OF CLEARANCE BETWEEN THE BOTTOM OF THE HOOD AND THE GROUND OR OTHER OBSTRUCTION. VERIFY APPLIANCE MANUFACTURERS RECOMMENDATIONS FOR ANY OTHER FACTORS.

RIGID PIPE NOT TO EXCEED 2" THROUGH DRYER BOX

MOUNT DRYERBOX AS LOW AS POSSIBLE UNLESS YOU HAVE A FEDESTAL OR STACKABLE DRYER

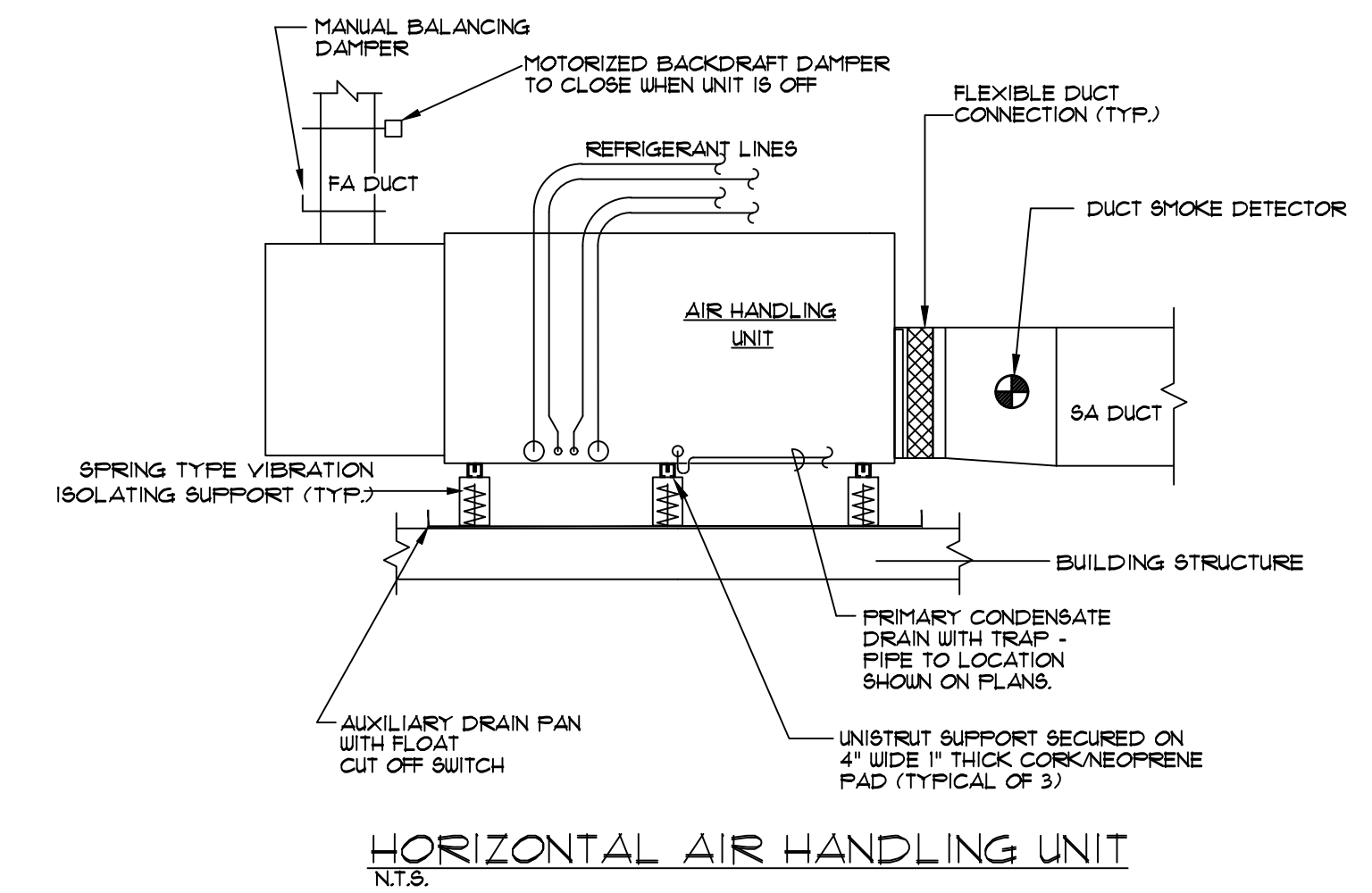
DRYERBOX DETAIL

MANUFACTURED BY: In-O-Vate Technologies, Inc.
810 Saturn Street, Suite 21
Jupiter, FL 33477 USA
(888) 443.7937
www.dryerbox.com

PRODUCT: DRYERBOX MODEL 4D

INSTALLATION: DETAILS FOR 6" STUD WALL

MATERIAL: 22GA. ALUMINUM STEEL 0.018



HORIZONTAL AIR HANDLING UNIT

N.T.S.

nton Engineering, P.A.
Robin Winton, P.E.

2207 WOODBINE DR.
LALAHASSEE, FL 32309 850-894-5316
FL 156206

ROBIN WINTON, STATE OF FLORIDA,
PROFESSIONAL ENGINEER, LICENSE NO.
56206. THIS ITEM HAS BEEN DIGITALLY
SIGNED AND SEALED BY ROBIN WINTON
ON THE DATE INDICATED HERE.
PRINTED COPIES OF THIS DOCUMENT
ARE NOT CONSIDERED SIGNED AND
SEALED AND THE SIGNATURE MUST BE
VERIFIED ON ANY ELECTRONIC COPIES.

MARTHA'S
RETREAT
GUEST HOUSE

2023-101 Drawn By: RPW

Project # Checked By: RPW

13 MARCH 2024

Date

DESIGN
DEVELOPMENT

Revisions

- △
- △
- △
- △
- △
- △
- △

MECHANICAL
DETAILS

Tallahassee Florida

M3.0

2207 WOODBINE DR. TALLAHASSEE, FL 32309
Phone 850 567-2019