





BKJ, Inc., Architecture  
1621 Physicians Dr.  
Tallahassee, Florida 32308  
(P) 850.778.8007 (F) 850.546.6150  
www.bkjarchitecture.com  
FL Architecture Corporation AA20002280

SEAL:

PROJECT TITLE:

**Makerspace Improvements**  
**TSC Library - 1st Floor**  
**444 Appleyard Drive,**  
**Tallahassee, FL 32304**

JOB NO.: **24-103**

DESIGNED: **FPH**

DRAWN: **FPH**

CHECKED: **MPP**

THIS DRAWING AND ANY REPRODUCTIONS ARE THE PROPERTY AND COPYRIGHT OF BKJ, INC. AND MAY NOT BE REPRODUCED, PUBLISHED, OR USED IN ANY MANNER WITHOUT WRITTEN PERMISSION OF THE ARCHITECT

REVISIONS:

DRAWING PHASE:

100% Construction Documents

DRAWING TITLE:

Schedules

SHEET NO.:

**P0.2**

DATE:

February 7, 2025

### PLUMBING FIXTURE SCHEDULE

FIXTURE DESIGNATION	FIXTURE DESCRIPTION	A.D.A. COMPLIANT	MOUNTING METHOD	HEIGHT (A.F.F.)	ROUGH-IN PIPE SIZES				MANUFACTURER AND MODEL NUMBER	ACCESSORIES (SEE SCHEDULE)
					COLD WATER SUPPLY	HOT WATER SUPPLY	FIXTURE TRAP	FIXTURE DRAIN		
WC-1	FLUSH VALVE WATER CLOSET, HIGH EFFICIENCY (1.28 - 1.6 GPF), VITREOUS CHINA, SIPHON JET FLUSHING ACTION, ELONGATED RIM, 1-1/2" TOP SPUD, MIN. 2" BALLPASS TRAPWAY. COLOR: WHITE.	YES	FLOOR	RIM: 16-1/2"	1"	N/A	4"	4"	AMERICAN STANDARD: 3043.001 OR APPROVED EQUAL	SEAT-OPN-FRT FV-1.6-AUTO-B
WC-2	FLUSH VALVE WATER CLOSET, HIGH EFFICIENCY (1.28 - 1.6 GPF), VITREOUS CHINA, SIPHON JET FLUSHING ACTION, ELONGATED RIM, 1-1/2" TOP SPUD, MIN. 2" BALLPASS TRAPWAY. COLOR: WHITE.	NO	FLOOR	RIM: 15"	1"	N/A	4"	4"	AMERICAN STANDARD: 2234.001 OR APPROVED EQUAL	SEAT-OPN-FRT FV-1.6-AUTO-B
UR-1	FLUSH VALVE URINAL, ULTRA HIGH EFFICIENCY (0.125 - 1.0 GPF), VITREOUS CHINA, WASHOUT FLUSHING ACTION, 3/4" TOP SPUD. COLOR: WHITE.	YES	WALL	RIM: 17"	3/4"	N/A	2"	2"	AMERICAN STANDARD: 6590.001 OR APPROVED EQUAL	FV-0.5-AUTO-B
UR-2	FLUSH VALVE URINAL, ULTRA HIGH EFFICIENCY (0.125 - 1.0 GPF), VITREOUS CHINA, WASHOUT FLUSHING ACTION, 3/4" TOP SPUD. COLOR: WHITE.	NO	WALL	RIM: 24"	3/4"	N/A	2"	2"	AMERICAN STANDARD: 6590.001 OR APPROVED EQUAL	FV-0.5-AUTO-B
LV-1	LAVATORY, 20"x18", VITREOUS CHINA, 3 FAUCET HOLES (ONE CENTERED, TWO 4" OFF CENTER), ANTI-SPLASH RIM AND HIGH BACK. COLOR: WHITE.	YES	WALL	RIM: 34"	1/2"	N/A	1-1/4"	2"	AMERICAN STANDARD: 0355.012 OR APPROVED EQUAL	FCT-LV-0.5-AUTO-B DR-LV-C TR-LV
LV-7	LAVATORY, 19"x15" OVAL, VITREOUS CHINA, SINGLE CONTROL FAUCET. COLOR: WHITE.	YES	UNDER COUNTER	SEE ARCH. PLANS	1/2"	N/A	1-1/4"	2"	AMERICAN STANDARD: 9482.000 OR APPROVED EQUAL	FCT-LV-0.5-AUTO-B DR-LV-C TR-LV

NOTES:

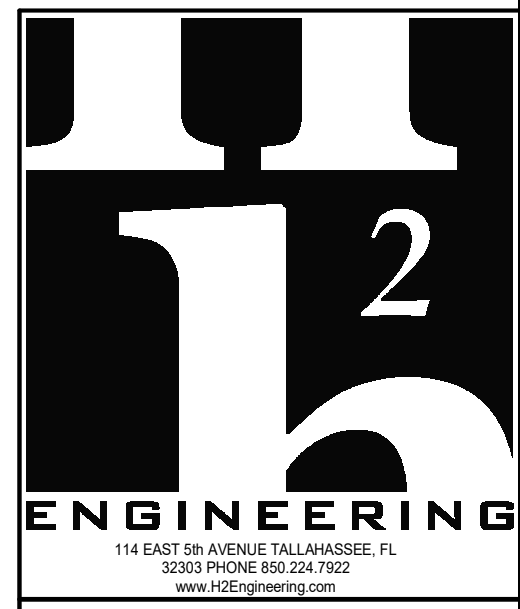
- SUPPLY STOPS: CHROME-PLATED-BRASS, ONE-QUARTER TURN, BALL-TYPE OR COMPRESSION VALVE WITH INLET MATCHING SUPPLY PIPING.
- FLEXIBLE CONNECTIONS: ASME A112.18.6 BRAIDED- OR CORRUGATED-STAINLESS STEEL, FLEXIBLE HOSE RISER.
- SUPPORT CARRIERS: ASME A112.6.1M TYPE 1 (URINALS) OR TYPE 2 (CONCEALED ARM FOR LAVATORIES) WITH RECTANGULAR STEEL UPRIGHTS, COUPLING, SEAL, AND MOUNTING HARDWARE.
- A.D.A. LAVATORIES & SINKS: PROTECT DRAIN AND SUPPLY LINES WITH "TRAP WRAP" OR APPROVED EQUAL.
- EXTRA MAINTENANCE MATERIALS: FURNISH TWO (2) FLUSHOMETER-VALVE REPAIR KITS FOR EACH TYPE OF FLUSHOMETER VALVE INSTALLED.

### PLUMBING FIXTURE ACCESSORY SCHEDULE

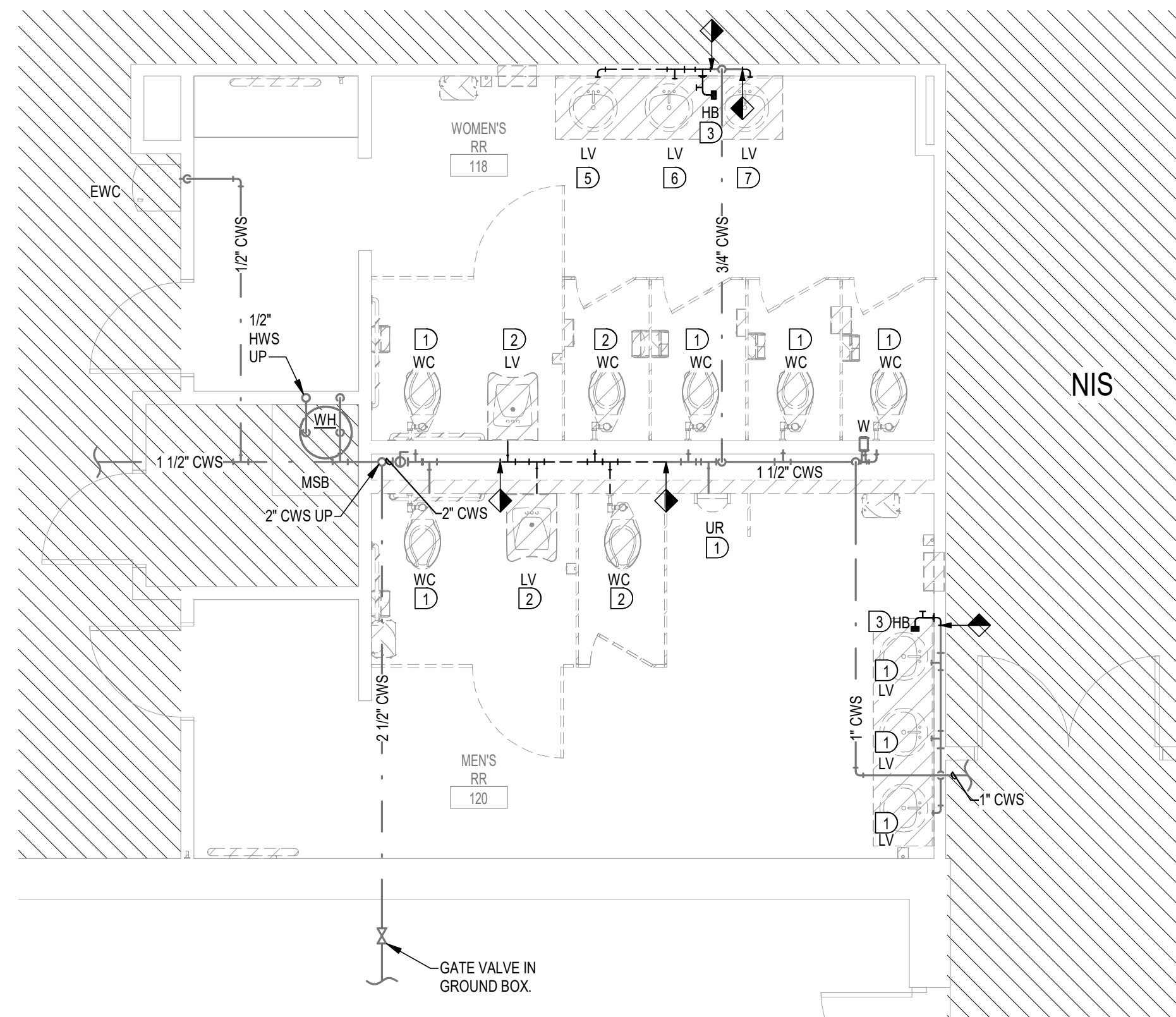
ACCESSORY TAG	ACCESSORY DESCRIPTION	MANUFACTURER AND MODEL NUMBER
DR-LV-C	1-1/4" CHROME PLATED BRASS OFFSET DRAIN WITH TAIL PIECE. PROVIDE A PERFORATED FLAT CHROME BRASS STRAINER.	ELKAY: LKAD174 OR APPROVED EQUAL
FCT-LV-0.5-AUTO-B	SINGLE INLET, DECK MOUNTED FAUCET, A.D.A. COMPLIANT, 4" CENTERSET, POLISHED CHROME PLATED BRASS, LEAD FREE, BATTERY POWERED, SENSOR OPERATED, 0.5 GPM AERATOR WITH PRESSURE COMPENSATING FLOW CONTROL.	AMERICAN STANDARD: 6058.205 OR APPROVED EQUAL
FV-0.5-AUTO-B	DIAPHRAGM TYPE, EXPOSED AUTOMATIC URINAL FLUSH VALVE, A.D.A. COMPLIANT, POLISHED CHROME PLATED, 0.5 GPF, BATTERY POWERED, SENSOR OPERATED, 3/4" SCREWDRIVER ANGLE STOP, VACUUM BREAKER, CAST WALL FLANGE.	SLOAN: G2 8186 OR APPROVED EQUAL
FV-1.6-AUTO-B	DIAPHRAGM TYPE, EXPOSED AUTOMATIC WATER CLOSET FLUSH VALVE, A.D.A. COMPLIANT, POLISHED CHROME PLATED, 1.6 GPF, BATTERY POWERED, SENSOR OPERATED, 1" SCREWDRIVER ANGLE STOP, VACUUM BREAKER, CAST WALL FLANGE.	SLOAN: G2 8111 OR APPROVED EQUAL
SEAT-OPN-FRT	EXTRA HEAVY DUTY, OPEN FRONT, ELONGATED SEAT, WITHOUT COVER, SOLID PLASTIC, SELF-SUSTAINING CHECK TYPE HINGE. HINGES SHALL MATCH SEAT COLOR. STAINLESS STEEL POSTS FITTED WITH STAINLESS STEEL WASHERS AND NUTS.	BEMIS: 1655SCT OR APPROVED EQUAL
TR-LV	CAST BRASS ADJUSTABLE P-TRAP, TUBING OUTLET, 1-1/4" x 1-1/2", CLEANOUT PLUG, POLISHED CHROME PLATED FINISH.	ELKAY: LK500 OR APPROVED EQUAL

### FIXTURE UNIT CALCULATIONS

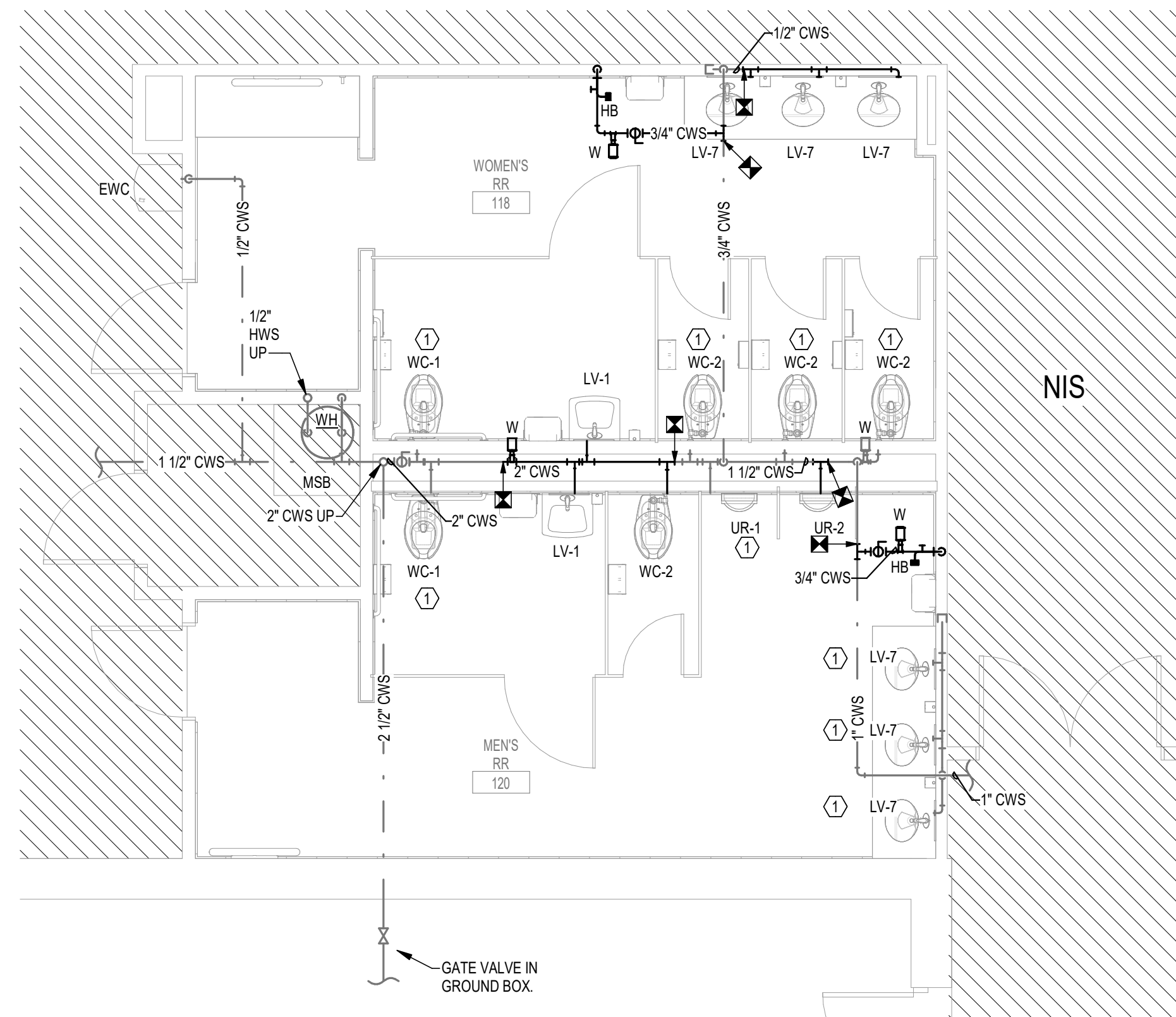
FIXTURE TYPE	QUANTITY	WASTE		SUPPLY					
		UNIT	TOTAL	COLD		HOT		UNIT	TOTAL
				UNIT	TOTAL	UNIT	TOTAL		
LAVATORY (COLD WATER)	8	1	8	2	16			2	16
URINAL (3/4" VALVE)	2	2	4	5	10			5	10
WATER CLOSET (FLUSH VALVE)	6	4	24	10	60			10	60
HOSE BIBB / WALL HYDRANT	2			4	8			4	8
FLOOR DRAIN	2	2	4						
<b>TOTAL FIXTURE UNITS</b>			40		94		0		94
<b>DOMESTIC WATER DEMAND (GPM)</b>					65.6		0.0		65.6



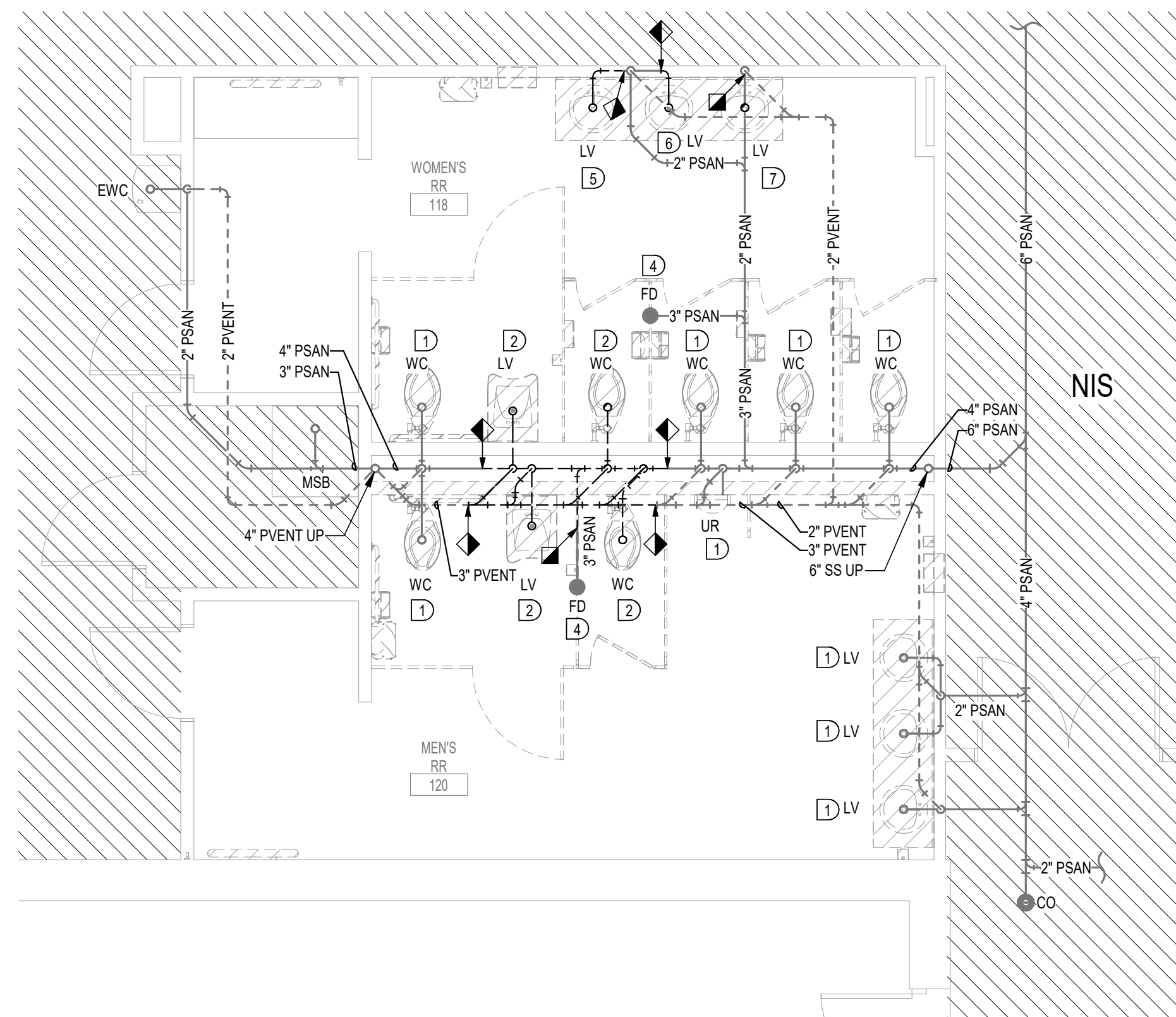
114 EAST 5th AVENUE TALLAHASSEE, FL 32303 PHONE: 850.224.7027  
www.b2engineering.com  
HSE PROJECT No. 24-073  
THIS DOCUMENT IS THE PROPERTY OF b2Engineering AND IS PREPARED AS AN INSTRUMENT OF SERVICE. ITS USE, REUSE OR REPRODUCTION, EXCEPT BY WRITTEN AGREEMENT WITH b2Engineering, IS PROHIBITED.  
Florida Registry #2485  
Mark P. Poindexter, P.E. #90615



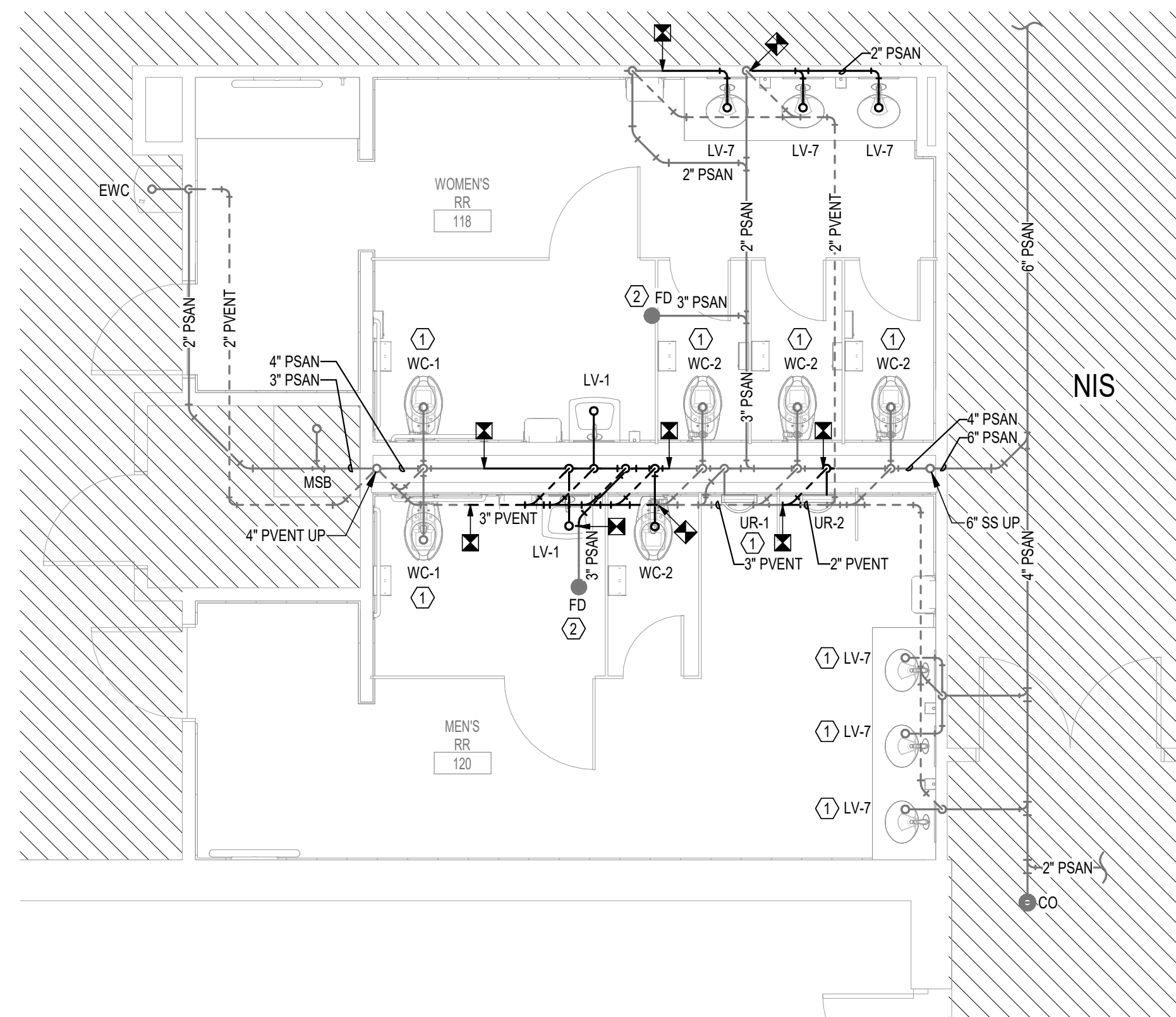
② Level 1 - Floor Plan - Demolition - Supply  
1/4" = 1'-0"



① Level 1 - Floor Plan - Supply  
1/4" = 1'-0"



④ Level 1 - Floor Plan - Demolition - Waste & Vent  
1/4" = 1'-0"



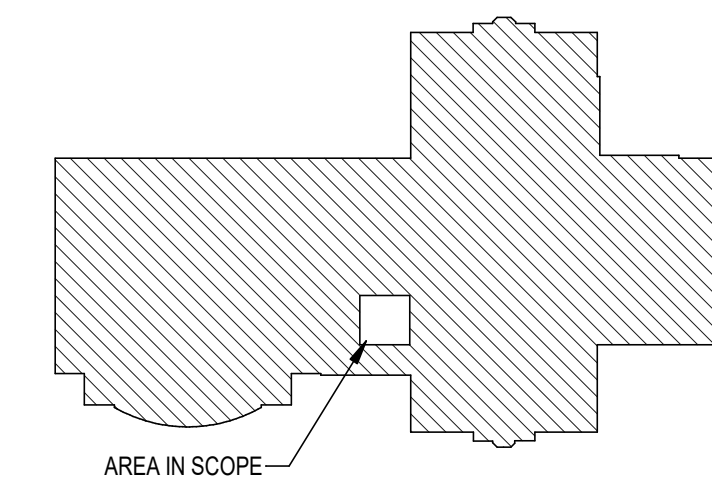
③ Level 1 - Floor Plan - Waste & Vent  
1/4" = 1'-0"

**DEMOLITION KEYNOTES**

- ① DEMOLISH PLUMBING FIXTURE AND ASSOCIATED FAUCET/VALVE, FIXTURE APPLICABLE P-TRAP, AND SUPPLY STOPS. WATER SUPPLY, WASTE AND VENT PIPING TO REMAIN FOR RECONNECTION AS INDICATED ON RENOVATION PLANS.
- ② DEMOLISH PLUMBING FIXTURE AND ALL ASSOCIATED WATER SUPPLY, WASTE AND VENT PIPING TO LIMITS INDICATED. EXTEND AND RECONNECT AS INDICATED ON RENOVATION PLANS.
- ③ DEMOLISH HOSE BIBB AND PIPING TO LIMIT INDICATED AND CAP.
- ④ FLOOR DRAIN TO REMAIN. REMOVE STRAINER, CLEAN AND PROTECT FOR REUSE AS INDICATED ON RENOVATION PLANS. COVER FLOOR DRAIN OPENING THROUGHOUT CONSTRUCTION.
- ⑤ DEMOLISH PLUMBING FIXTURE AND ASSOCIATED WATER SUPPLY, WASTE AND VENT PIPING BEHIND WALL AND CAP. PATCH WALL PER ARCHITECT DRAWINGS.
- ⑥ DEMOLISH PLUMBING FIXTURE AND ASSOCIATED WATER SUPPLY PIPING BEHIND WALL AND CAP. DEMOLISH WASTE PIPING TO LIMIT INDICATED, EXTEND AND RECONNECT AS INDICATED ON RENOVATION PLANS. PATCH WALL PER ARCHITECT DRAWINGS.
- ⑦ DEMOLISH SUPPLY AND WASTE PIPING TO LIMIT INDICATED, EXTEND AND RECONNECT AS INDICATED ON RENOVATION PLANS.

**RENOVATION KEYNOTES**

- ① NEW PLUMBING FIXTURE IN EXISTING LOCATION. EXTEND AND RECONNECT WATER SUPPLY, WASTE AND VENT PIPING AS REQUIRED. PROVIDE ALL NEW ACCESSORIES LISTED ON PLUMBING FIXTURE SCHEDULE INCLUDING NEW SUPPLY STOPS WHERE APPLICABLE.
- ② REINSTALL STRAINER.



Key Plan - Level 1  
NTS

**ENGINEERING**  
114 EAST 5th AVENUE TALLAHASSEE, FL  
32303 PHONE 904.224.7122  
www.H2EEngineering.com

H2E PROJECT No. 24-073

THIS DOCUMENT IS THE PROPERTY OF H2E Engineering AND IS PREPARED AS AN INSTRUMENT OF SERVICE. ITS USE, REUSE OR REPRODUCTION, EXCEPT BY WRITTEN AGREEMENT WITH H2E Engineering, IS PROHIBITED.

Florida Registry #2485  
Mark P. Poindexter, P.E. #90615

**bki**  
ARCHITECTURE

BKJ, Inc., Architecture  
1621 Physicians Dr.  
Tallahassee, Florida 32308  
(P) 850.778.8007 (F) 850.546.6150  
www.bkiarchitecture.com  
FL Architecture Corporation AA28002280

SEAL:

PROJECT TITLE:  
**Makerspace Improvements  
TSC Library - 1st Floor**  
444 Appleyard Drive,  
Tallahassee, FL 32304

JOB NO.: 24-103  
DESIGNED: FPH  
DRAWN: FPH  
CHECKED: MPP

THIS DRAWING AND ANY REPRODUCTIONS ARE THE PROPERTY AND COPYRIGHT OF BKJ, INC. AND MAY NOT BE REPRODUCED, PUBLISHED, OR USED IN ANY MANNER WITHOUT WRITTEN PERMISSION OF THE ARCHITECT

REVISIONS:


DRAWING PHASE:  
100% Construction Documents

DRAWING TITLE:  
Level 1 Floor Plans

SHEET NO.:  
**P1.0**

DATE:  
February 7, 2025



SEAL:

PROJECT TITLE:

**Makerspace Improvements  
TSC Library - 1st Floor  
444 Appleyard Drive,  
Tallahassee, FL 32304**

JOB NO.: 24-103

DESIGNED: FPH

DRAWN: FPH

CHECKED: MPP

THIS DRAWING AND ANY REPRODUCTIONS ARE THE PROPERTY AND COPYRIGHT OF BKJ, INC. AND MAY NOT BE REPRODUCED, PUBLISHED, OR USED IN ANY MANNER WITHOUT WRITTEN PERMISSION OF THE ARCHITECT

REVISIONS:

DRAWING PHASE:

100% Construction Documents

DRAWING TITLE:

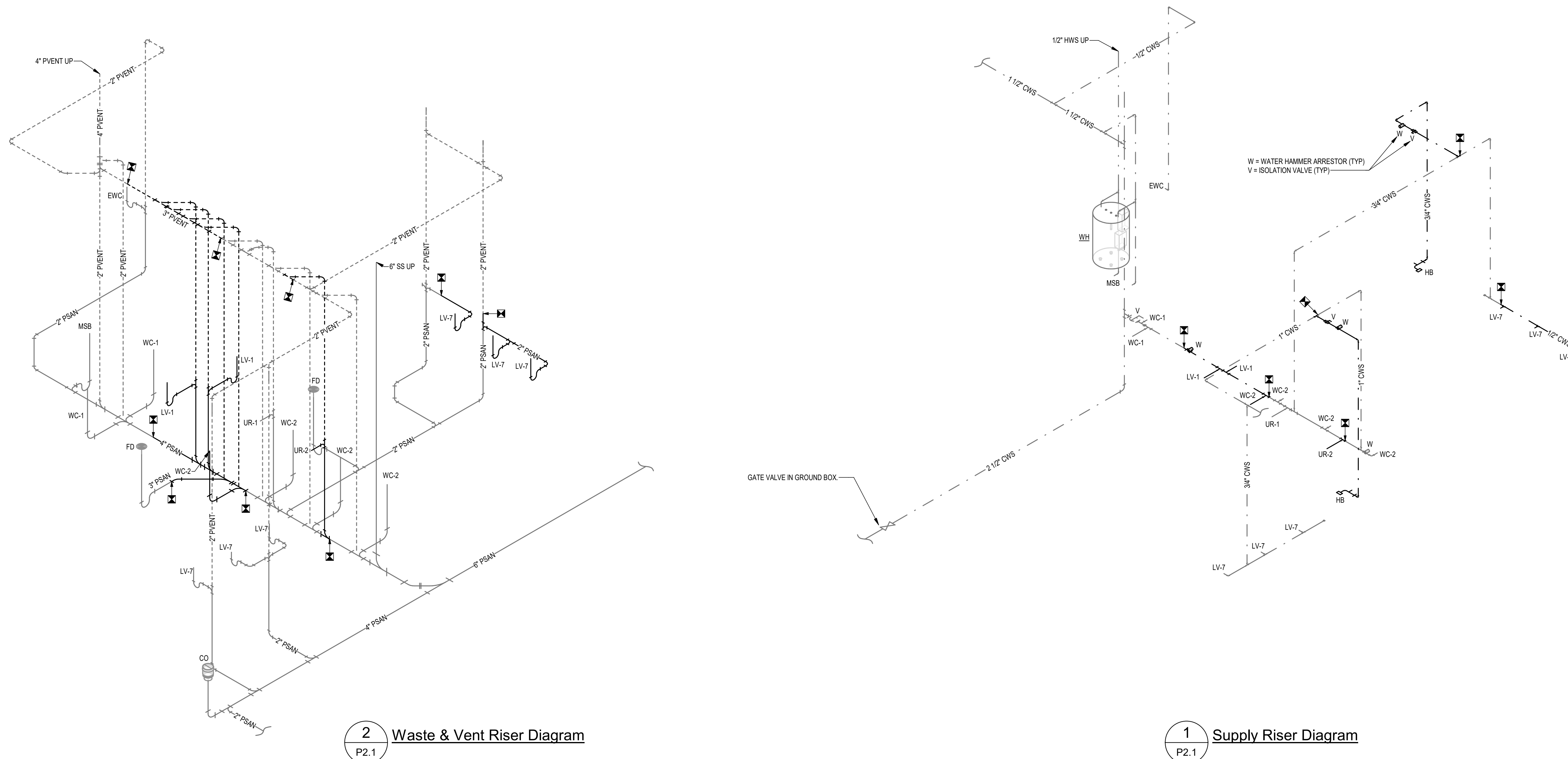
Riser Diagrams

SHEET NO.:

**P2.1**

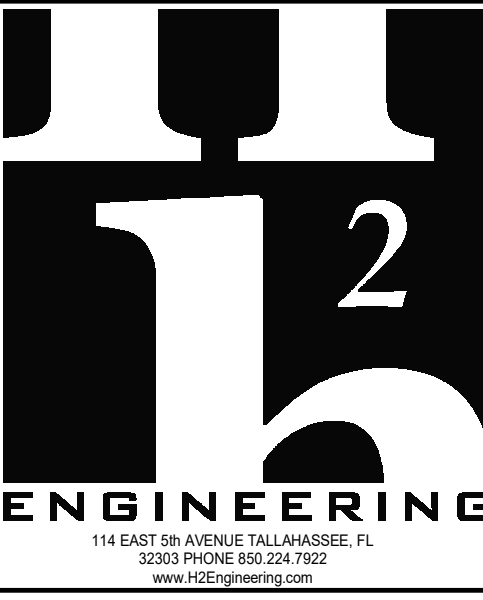
DATE:

February 7, 2025



**2** Waste & Vent Riser Diagram  
P2.1

**1** Supply Riser Diagram  
P2.1



114 EAST 5th AVENUE TALLAHASSEE, FL  
32303 PHONE 850.224.7922  
www.H2Engineering.com

H2E PROJECT No. 24-073

THIS DOCUMENT IS THE PROPERTY OF H2ENGINEERING, INC. AND IS PREPARED AS AN INSTRUMENT OF SERVICE. ITS USE, REUSE OR REPRODUCTION, EXCEPT BY WRITTEN AGREEMENT WITH H2ENGINEERING, IS PROHIBITED.

Florida Registry #2485  
Mark P. Poindexter, P.E. #90615