

ELECTRICAL GENERAL NOTES

- CONTRACTOR SHALL COORDINATE ALL WORK WITH OTHER TRADES PRIOR TO INSTALLATION. REFER TO AV DRAWINGS FOR REQUIRED RACEWAYS, EXACT SIZE, AND LOCATION OF EQUIPMENT WHICH IS FURNISHED BY OTHERS AND CONNECTED BY ELECTRICAL.
- RECEPTACLES, SWITCHES AND COVERPLATES COLOR SHALL BE SELECTED BY THE ARCHITECT FROM STANDARD COLORS.
- LOCATION OF LIGHTING FIXTURES, DISCONNECT SWITCHES, ETC. FOR AUDIO-VISUAL EQUIPMENT/ROOM SHALL BE COORDINATED WITH FINAL AV EQUIPMENT LOCATIONS TO PROVIDE NATIONAL ELECTRIC CODE REQUIRED ACCESS SPACE.
- FINAL CONNECTION TO ALL MOTORS SHALL BE WITH FLEXIBLE CONDUIT CONNECTION.
- ALL EXIT AND EMERGENCY FIXTURES SHALL BE CONNECTED TO LIGHT CIRCUIT AHEAD OF LOCAL SWITCH.
- ALL PANELBOARDS, BACKBOARDS, TERMINAL CABINETS, ETC., SHALL HAVE CUSTOM ENGRAVED MICARTA NAMEPLATE MECHANICALLY AFFIXED IDENTIFYING SYSTEM.
- GENERAL CONTRACTOR SHALL FIELD-VERIFY ALL EXISTING CONDITIONS PRIOR TO BEGINNING ANY WORK, AND SHALL IMMEDIATELY NOTIFY THE ARCHITECT OF ANY DISCREPANCIES. FAILURE TO DO SO INDICATES THAT THE CONTRACTOR ACCEPTS THE CONDITIONS AS THEY EXIST, AND SHALL PERFORM THE WORK REQUIRED AS SHOWN AND SPECIFIED.
- THE ELECTRICAL CONTRACTOR SHALL OBTAIN AND REVIEW THE AUDIO-VISUAL AND SPECIAL EQUIPMENT SUBMITTALS PRIOR TO SUBMITTING THE ELECTRICAL SUBMITTALS. ANY ELECTRICAL EQUIPMENT, CONDUIT, AND WIRE SIZE CHANGES RESULTING FROM THIS REVIEW SHALL ALSO BE SUBMITTED FOR APPROVAL.
- FURNISH ALL EQUIPMENT AND LABOR, PERFORM ALL LABOR WITH SUPERVISION, BEAR ALL EXPENSES, AS NECESSARY FOR THE SATISFACTORY COMPLETION OF ALL WORK READY FOR OPERATION.
- COMPLY WITH ALL LOCAL CODE, LAWS, AND ORDINANCES APPLICABLE TO ELECTRICAL WORK, THE STATE BUILDING CODE, 2020 NATIONAL ELECTRIC CODE, AND 2023 FBC 8TH EDITION. OBTAIN ALL PERMITS REQUIRED BY LOCAL ORDINANCES.
- OBTAIN ARCHITECTS/ENGINEER'S APPROVAL OF ALL LIGHT FIXTURES, SWITCHES, RECEPTACLES, PANELBOARDS, ETC., PRIOR TO PURCHASING.
- TERMINATIONS FOR ALL EQUIPMENT SHOWN TO HAVE TEMPERATURE RATING OF 75deg C PER NEC 2020 ART. 110.14 & TABLE 310.15(B)(16).
- WHERE USED, PROVIDE MEANS TO SIMULTANEOUSLY DISCONNECT ALL UNGROUNDED CONDUCTORS AT THE CIRCUIT BREAKERS SERVING MULTI-WIRE BRANCH CIRCUITS IN ACCORDANCE WITH NEC 210.4(B).

FIRESTOPPING NOTES

- USE ONLY FIRESTOP PRODUCTS THAT HAVE BEEN UL 1479, ASTM E-814, OR UL 2079 TESTED FOR SPECIFIC FIRE RATED CONSTRUCTION CONDITIONS. THE CONDITIONS AND MATERIALS ARE SPECIFIED AS FOLLOWS:
- FOR PENETRATIONS BY NON COMBUSTIBLE ITEMS USE 3M FIRE STOP SEALANT 2000 OR 3M FIRE BARRIER MOLDABLE PUDDY PADS MPFA.
 - FOR FIRE RATED CONSTRUCTION JOINTS AND OTHER GAPS USE 3M FIRESTOP SEALANT 2000.
 - FOR PENETRATIONS BY COMBUSTIBLE ITEMS USE 3M FIRE BARRIER CP25 WB OR 3M FIRE BARRIER FS 195 WRAP/STRIP.
 - FOR PENETRATIONS BY COMBUSTIBLE PLASTIC PIPE (OPEN PIPING SYSTEMS) USE 3M FIRE BARRIER PPO PLASTIC PIPE DEVICE.
 - FOR LARGE SIZE/COMPLEX PENETRATIONS USE 3M FIRESTOP FOAM 2001 OR 3M FIRE BARRIER CS 195 COMPOSITE SHEET.
 - FOR OPENINGS BETWEEN STRUCTURALLY SEPARATE SECTIONS OF WALL AND FLOORS USE 3M FIRE BARRIER CP 25 WB.

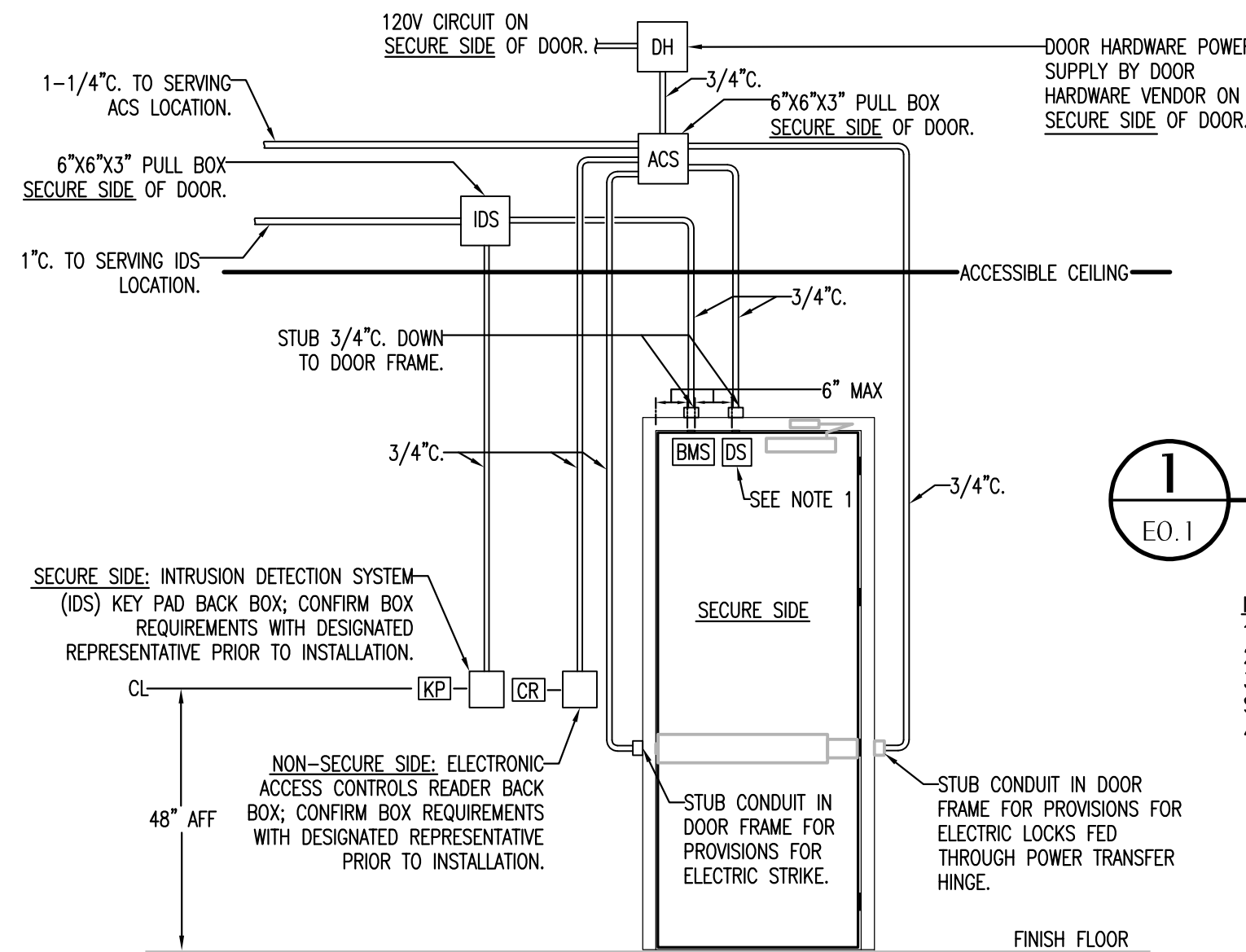
DEMOLITION NOTES

- ALL EXISTING SYSTEMS AND CONDITIONS SHOWN ON THE PLANS ARE APPROXIMATE. THE EXISTING ELECTRICAL CIRCUITS OF POWER, RECEPTACLES, LIGHTING, ETC. BEING REMOVED MAY NOT BE SHOWN ON THESE DOCUMENTS, BUT ARE TO BE REMOVED AS REQUIRED TO BUILD THIS PROJECT AND TO PERMIT NEW FINISHES, WALLS, ETC. THE CONTRACTOR SHALL FIELD-VERIFY ALL CONDITIONS PRIOR TO BEGINNING ANY WORK AND SHALL NOTIFY THE ARCHITECT OF DISCREPANCIES. FAILURE TO DO SO INDICATES THAT THE CONTRACTOR ACCEPTS THE CONDITIONS AS THEY EXIST AND SHALL PERFORM ANY ADDITIONAL WORK NECESSARY TO PERFORM THE WORK AS SHOWN AND SPECIFIED.
- IF A DEVICE IS BEING REMOVED AND THE CIRCUIT FEEDS OTHER LOADS FROM THE DEVICE, THEN THE WIRING SHALL BE MADE CONTINUOUS TO THE REMAINING LOADS. NO CIRCUIT CONTINUITY SHALL BE LOST.
- IF A DEVICE IS BEING REMOVED AND NOT PART OF A DEMO WALL THAT LOCATION SHALL BE RESTORED TO MATCH ADJACENT SURFACE.
- REMOVE ALL DISCONNECTS, WIRING, AND CONDUITS SERVING MECHANICAL EQUIPMENT BEING REMOVED OR RELOCATED.
- CONTRACTOR TO REMOVE ALL CONDUITS, AND ASSOCIATED WIRING FROM DEVICES BEING REMOVED BACK TO PANEL UNLESS NOTED OTHERWISE. WHEN ALL LOADS ON EXISTING BREAKERS ARE REMOVED, RELABEL BREAKER AS 'SPARE'.

ELECTRICAL LEGEND

- CEILING OUTLETS**
- RECESSED 2' X 4' FLUORESCENT/LED FIXTURE MARK *A* CIRCUIT TYPICAL
 - RECESSED 2' X 4' FLUORESCENT/LED FIXTURE INSTALLED FOR CONTINUOUS OPERATION
 - INDICATES FIXTURE WITH EMERGENCY UNIT BATTERY PACK
 - SURFACE MOUNTED, RECESSED OR SUSPENDED FLUORESCENT/LED FIXTURE MARK *A* AS NOTED
 - SURFACE MOUNTED FLUORESCENT/LED STRIP FIXTURE MARK *FS* AS NOTED
 - EXIT LIGHT
 - JUNCTION BOX
 - RECESSED/SURFACE MOUNT LIGHT
 - RECESSED/SURFACE MOUNT LIGHT INSTALLED FOR CONTINUOUS OPERATION
 - EXHAUST FAN
- PANELS AND POWER**
- 120/208 VOLT PANELBOARD
 - EXISTING 120/208 VOLT PANELBOARD
 - NON-FUSIBLE DISCONNECT SWITCH: XXYY/ZZ WHERE X INDICATES AMPERAGE, Y INDICATES # OF POLES, AND Z INDICATES NEMA RATING
- FIRE ALARM SYSTEM**
- FIRE ALARM SYSTEM MANUAL PULL STATION; MT 48" AFF TO C/L
 - FIRE ALARM SYSTEM SIGNAL SPEAKER/STROBE; MT 80" AFF TO BOTTOM
 - WEATHERPROOF FIRE ALARM SYSTEM SIGNAL SPEAKER; MOUNT 80" AFF TO BOTTOM
 - FIRE ALARM SYSTEM STROBE; MT. 80" AFF TO BOTTOM
 - FIRE ALARM SYSTEM AUTOMATIC HEAT DETECTOR; 135 DEGREE/RATE OF RISE TYPE; CEILING MOUNTED
 - FIRE ALARM SYSTEM AUTOMATIC SMOKE DETECTOR; CEILING MOUNTED
 - FIRE ALARM SYSTEM RACEWAY INSTALLED CONCEALED; ARROW INDICATES HOMERUN TO FIRE ALARM CONTROL PANEL
 - FIRE ALARM SYSTEM AUTOMATIC AIR DUCT SMOKE DETECTOR MOUNTED IN SUPPLY AIR DUCT
 - FIRE ALARM SYSTEM AUTOMATIC AIR DUCT SMOKE DETECTOR MOUNTED IN RETURN AIR DUCT
 - NORMALLY CLOSED RELAY IN H.V.A.C CONTROL CIRCUIT TO OPEN UPON ACTUATION OF BUILDING FIRE ALARM SYSTEM TO SHUT DOWN A/C UNIT. CONTACTS RATED 5 AMPS, 120 VOLTS.
 - REMOTE INDICATOR LIGHT; FIELD-VERIFY EXACT LOCATION OF INSTALLATION
 - FIRE ALARM SYSTEM MAGNETIC DOOR HOLDERS; WHERE APPLICABLE, EC TO PROVIDE 120V POWER AT DEVICE
 - FIRE ALARM SYSTEM FLOW SWITCH
 - FIRE ALARM SYSTEM TAMPER SWITCH

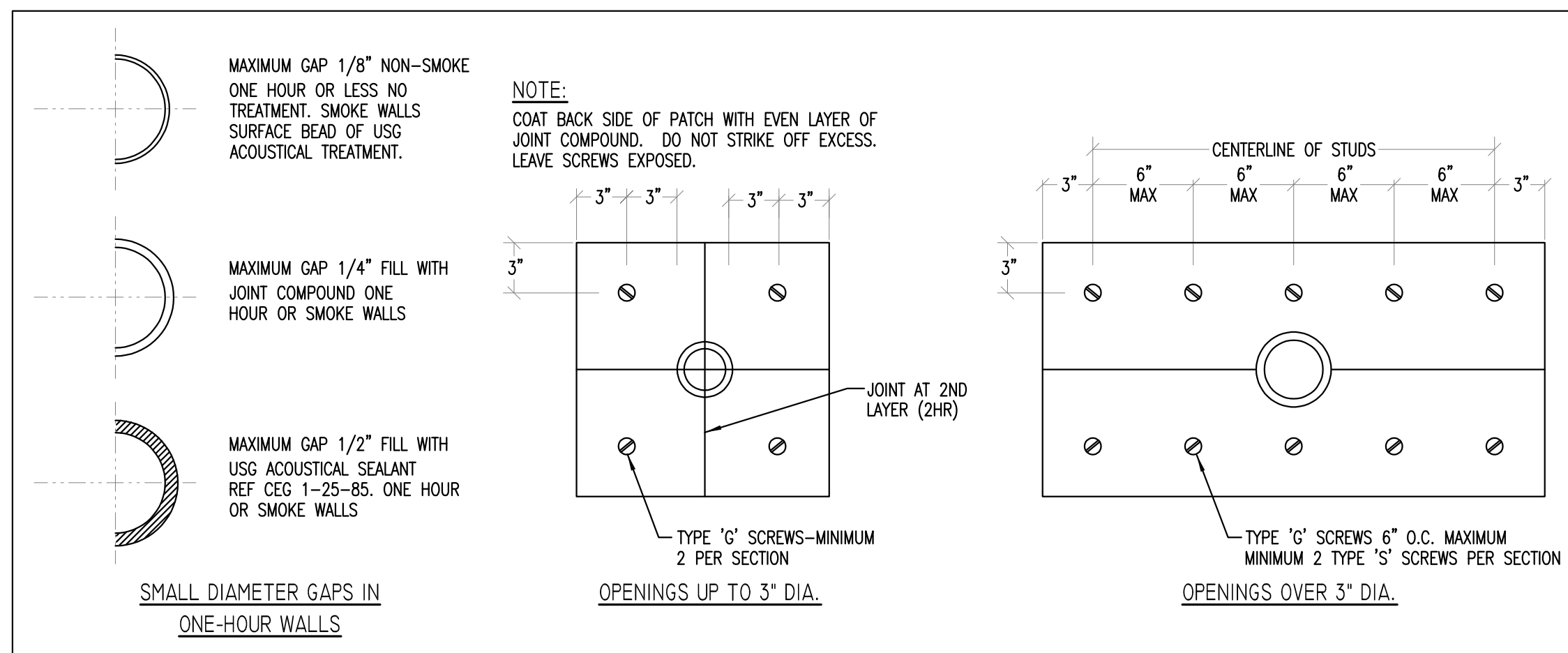
- AUTOMATIC LIGHTING CONTROL SYSTEM**
- 180° CEILING MOUNTED OCCUPANCY SENSOR EQUAL TO WATTSTOPPER DT-205 (LOW VOLTAGE); DUAL TECHNOLOGY INFRARED AND ULTRASONIC. 2000 SQ FT COVERAGE; SEE CEILING MOUNTED MOTION DETECTOR DETAIL
 - 360° CEILING MOUNTED OCCUPANCY SENSOR EQUAL TO WATTSTOPPER DT-355 (LINE VOLTAGE); DUAL TECHNOLOGY INFRARED AND ULTRASONIC. 1000 SQ FT COVERAGE; SEE CEILING MOUNTED MOTION DETECTOR DETAIL
 - POWER PACK RELAY EQUAL TO WATTSTOPPER BZ-50 POWER PACK; SEE CEILING MOUNTED MOTION DETECTOR DEVICE TO BE MOUNTED ABOVE CEILING. (UNIVERSAL 100-277V)...20 AMP MAX. SWITCHING CAPABILITY
- BRANCH CIRCUITING**
- RUN CONCEALED UNDER FLOOR OR IN GRADE
 - RUN CONCEALED IN CEILING OR WALLS
 - HOMERUN TO PANEL - ANY CIRCUIT WITHOUT FURTHER IDENTIFICATION INDICATES #12, 1#12 GROUND - 3/4" C. ETC. AS PER NEC. LETTERS AND NUMERALS INDICATE PANEL AND CIRCUIT NUMERALS INDICATE PANEL AND CIRCUIT NUMBER.
 - LIQUID-TIGHT FLEXIBLE CONDUIT CONNECTION
 - SURFACE MOUNTED CONDUIT; RUN PARALLEL OR PERPENDICULAR TO BUILDING LINES
- TELEPHONE & TV SYSTEM**
- WALL OUTLET - 4" SO X 2-1/8" DEEP BOX @ 18" A.F.F. TO C/L OF DEVICE U.N.O.; INSTALL 3/4" C. TO ACCESSIBLE LOCATION ABOVE CEILING. COMMUNICATIONS CONTRACTOR SHALL PROVIDE COVERPLATES, INSERTS, ETC.
 - WALL OUTLET - 4" SO X 2-1/8" DEEP BOX @ 6" ABOVE COUNTER TO C/L OF DEVICE U.N.O.; INSTALL 3/4" C. TO ACCESSIBLE LOCATION ABOVE CEILING. COMMUNICATIONS CONTRACTOR SHALL PROVIDE COVERPLATES, INSERTS, ETC.
 - WALL OUTLET - 4" SO X 2-1/8" DEEP BOX @ 6" HORIZONTALLY ABOVE COUNTER TO C/L OF DEVICE; INSTALL 3/4" C. TO ACCESSIBLE LOCATION ABOVE CEILING; COMMUNICATIONS CONTRACTOR SHALL PROVIDE COVERPLATES, INSERTS, ETC.
 - 3/4" (60" HIGH) TELEPHONE BACKBOARD EXTERIOR GRADE PLYWOOD WITH TWO COATS OF INSULATING VARNISH, SIZE AS SHOWN
 - TELEVISION CABLE WALL OUTLET - 4" SO X 2-1/8" DEEP BOX; INSTALL 3/4" C. TO ACCESSIBLE LOCATION ABOVE CEILING. COMMUNICATIONS CONTRACTOR SHALL PROVIDE COVERPLATES, INSERTS, ETC...MOUNT 18" A.F.F. TO C/L OF DEVICE U.N.O.
- WALL OUTLETS**
- DUPLEX RECEPTACLE - 20 AMP, 125 VOLT, 2 POLE, 3 WIRE GROUNDED TYPE, NEMA 5-20R. MOUNT 18" A.F.F. UNLESS NOTED OTHERWISE
 - DUPLEX RECEPTACLE - 20 AMP, 125 VOLT, 2 POLE, 3 WIRE GROUNDED TYPE, NEMA 5-20R. MOUNT 18" A.F.F. UNLESS NOTED OTHERWISE. TAMPER RESISTANT
 - DUPLEX RECEPTACLE - 20 AMP, 125 VOLT, GFI, 2 POLE, 3 WIRE GROUNDED TYPE, NEMA 5-20R. MOUNT 18" A.F.F. UNLESS NOTED OTHERWISE
 - DUPLEX RECEPTACLE - 20 AMP, 125 VOLT, 2 POLE, 3 WIRE GROUNDED TYPE, NEMA 5-20R. MOUNT 18" A.F.F. UNLESS NOTED OTHERWISE. 'H' DENOTES DEVICE TO BE MOUNTED HORIZONTALLY
 - DUPLEX WEATHER/RESISTANT (WR) RECEPTACLE - 20 AMP, 125 VOLT, GFI, 2 POLE, 3 WIRE GROUNDED TYPE, NEMA 5-20R. MOUNT 18" A.F.F. UNLESS NOTED OTHERWISE. PROVIDE WEATHERPROOF BOX FOR RECEPTACLE. DEVICE MUST COMPLY WITH NEC 406.9
 - DUPLEX RECEPTACLE - 20 AMP, 125 VOLT, 2 POLE, 3 WIRE GROUNDED TYPE, NEMA 5-20R. MOUNT FLUSH IN CEILING
 - DUPLEX RECEPTACLE - 20 AMP, 125 VOLT, 2 POLE, 3 WIRE GROUNDED TYPE, NEMA 5-20R. MOUNT ADJACENT TO TELEVISION OUTLET AT SAME HEIGHT.
 - DUPLEX RECEPTACLE - 20 AMP, 125 VOLT, 2 POLE, 3 WIRE GROUNDED TYPE, NEMA 5-20R. MOUNT 6" ABOVE COUNTER
 - DUPLEX RECEPTACLE - 20 AMP, 125 VOLT, GFI, 2 POLE, 3 WIRE GROUNDED TYPE, NEMA 5-20R. MOUNT 6" ABOVE COUNTER
 - DUPLEX RECEPTACLE - 20 AMP, 125 VOLT, GFI, 2 POLE, 3 WIRE GROUNDED TYPE, NEMA 5-20R. MOUNT 6" ABOVE COUNTER. HORIZONTALLY
 - DUPLEX RECEPTACLE - 20 AMP, 125 VOLT, 2 POLE, 3 WIRE GROUNDED TYPE, NEMA 5-20R. MOUNT 26" AFF TO C/L FOR DRINKING FOUNTAIN; HOMERUN TO BE TERMINATED ON GFCI BREAKER PER NEC 210.8
 - QUADRUPLEX RECEPTACLE - 20 AMP, 125 VOLT, 2 POLE, 3 WIRE GROUNDED TYPE, NEMA 5-20R. MOUNT 18" A.F.F. UNLESS NOTED OTHERWISE
 - QUADRUPLEX RECEPTACLE - 20 AMP, 125 VOLT, 2 POLE, 3 WIRE GROUNDED TYPE, NEMA 5-20R. MOUNT 18" A.F.F. UNLESS NOTED OTHERWISE. 'H' DENOTES DEVICE TO BE MOUNTED HORIZONTALLY
 - 240V RECEPTACLE - MOUNT 18" AFF UNLESS NOTED OTHERWISE. VERIFY TYPE REQUIRED WITH EQUIPMENT FURNISHED
 - JUNCTION BOX WITH BLANK SCREW COVER AND FLEXIBLE CONDUIT CONNECTION
 - SURFACE-MOUNTED JUNCTION BOX WITH BLANK SCREW COVER (UNLESS DEVICE SHOWN TO BE INSTALLED); SIZE OF BOX TO BE DETERMINED BY DEVICE BEING INSTALLED
 - WALL MOUNTED EXIT LIGHT
 - WALL MOUNTED HIGH INTENSITY DISCHARGE FIXTURE
 - WALL MOUNTED EMERGENCY UNIT BATTERY PACK
 - WALL MOUNTED EXIT LIGHT/BATTERY PACK COMBO FIXTURE
 - SIDEWALL PHOTOCELL EQUAL TO TORK #2101 (120V)
- MISCELLANEOUS**
- A.F.F. ABOVE FINISH FLOOR
 - B.F.C. BELOW FINISHED CEILING
 - E EXISTING
 - IG ISOLATED GROUND
 - CBB COMMUNICATION BACKBOARD
 - FACP FIRE ALARM CONTROL PANEL



SECURITY DOOR ROUGH-IN DETAIL SINGLE DOOR

SCALE: N.T.S.

- NOTES:
- ACS DOOR POSITION SWITCH (NOT SHOWN ON PLANS FOR CLARITY)
 - ALL NOTED CONDUIT IS CONCEALED.
 - ALL NOTED ACCESSIBLE PULL BOXES AND BACK BOXES ARE LOCATED ON SECURE SIDE OF DOOR.
 - AS A MINIMUM, PROVIDE PULLBOX EVERY 100' OF INTERIOR CONDUIT RUNS.

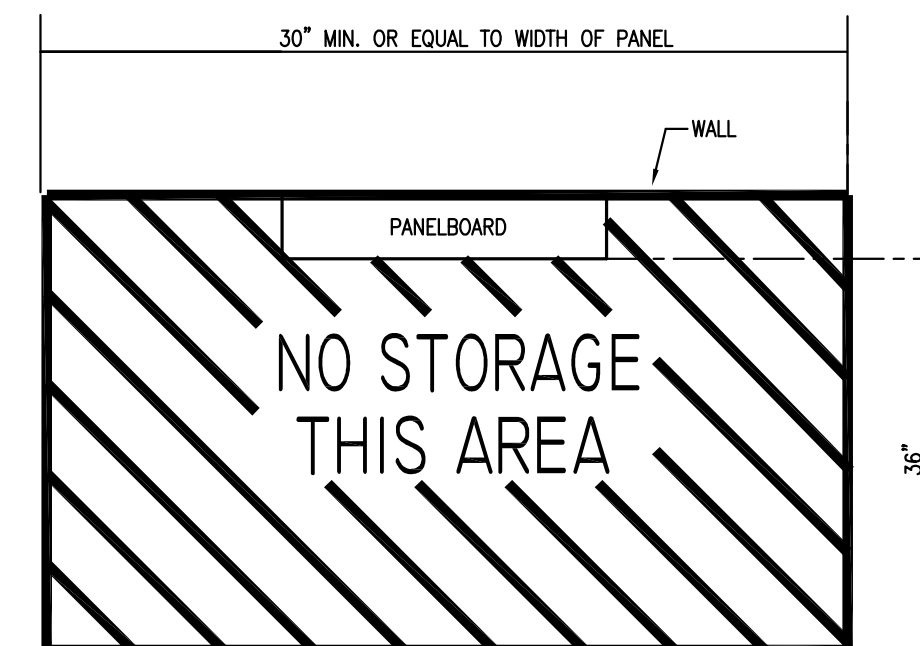


FIRE WALL PENETRATIONS

SCALE: N.T.S.

TYPICAL CLEARANCE AT ELECTRICAL PANELS

SCALE: N.T.S.



Design - Build Contractor

230 West 5th Street
Panama City, FL 32401
(850) 215-5540

LYNN HAVEN
METHODIST CHURCH
3203 MINNESOTA AVENUE
LYNN HAVEN, FL 32444

| REVISION | | |
|----------|-------------|------|
| # | DESCRIPTION | DATE |
| | | |
| | | |
| | | |
| | | |

Designed By:
A.DAVIS

Drawn By:
C.DANIELS

ELECTRICAL LEGEND,
GENERAL NOTES,
AND DETAILS

E0.1

03/10/2025 10:00:00 AM

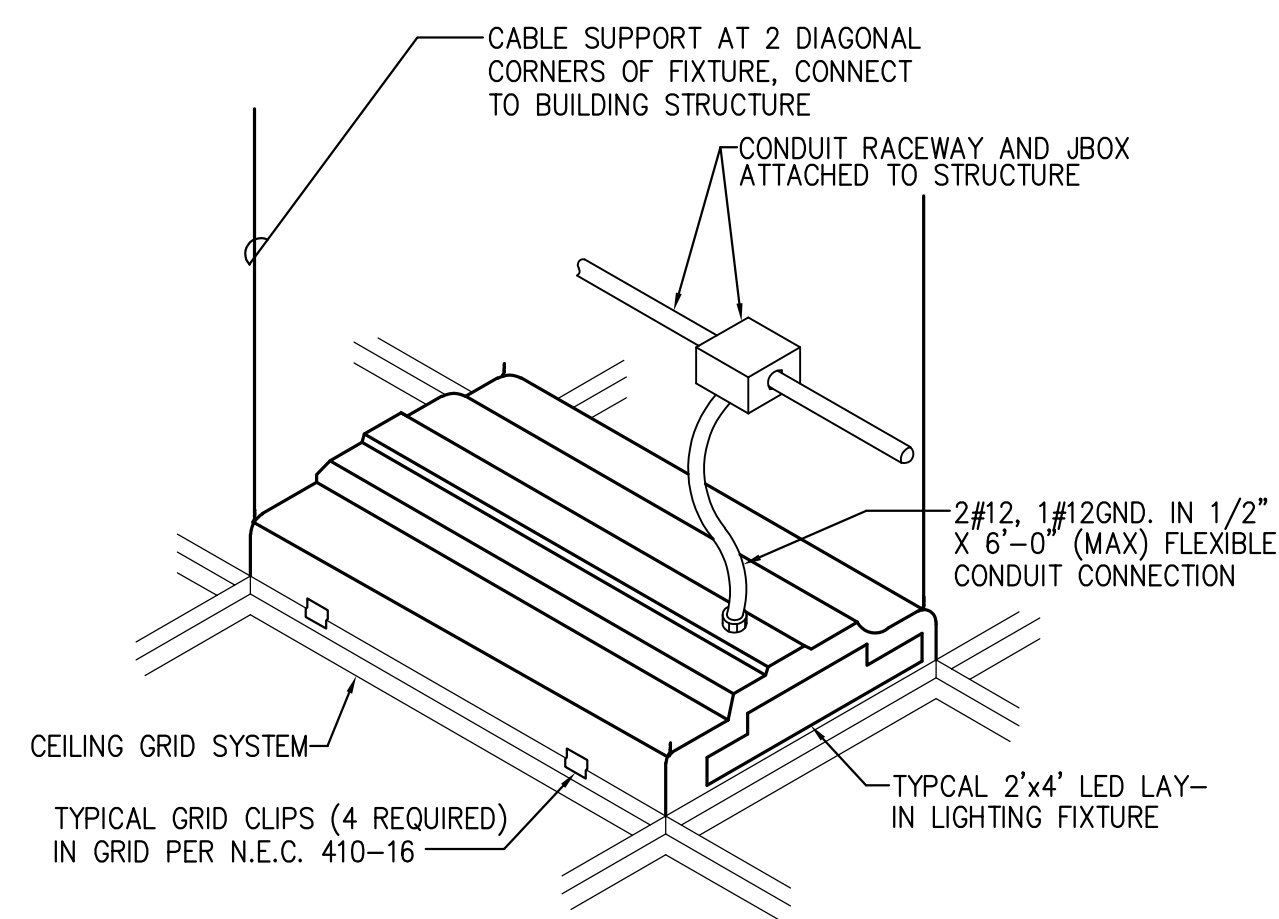


No Part Of These Documents May Be Reproduced, Stored In a Retrieval System, OR Transmitted In Any Form Or By Any Means, Electronic, Mechanical, Photocopying, Recording, Or Otherwise, Without The Prior Written Permission Of: ReliantSouth Construction Group.

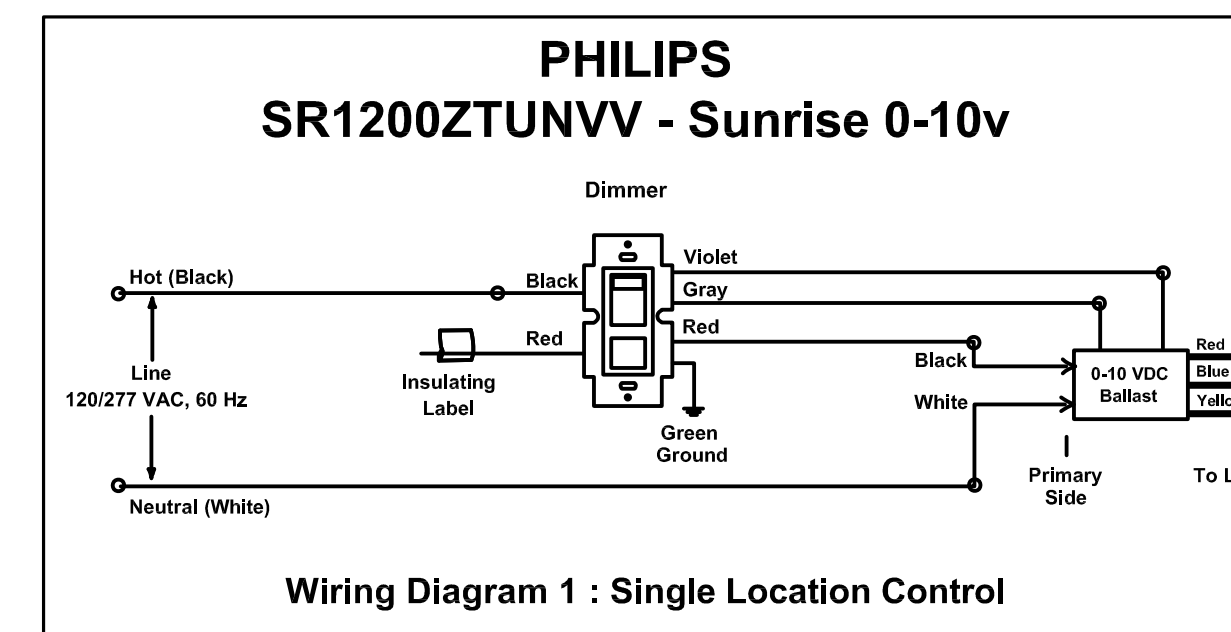
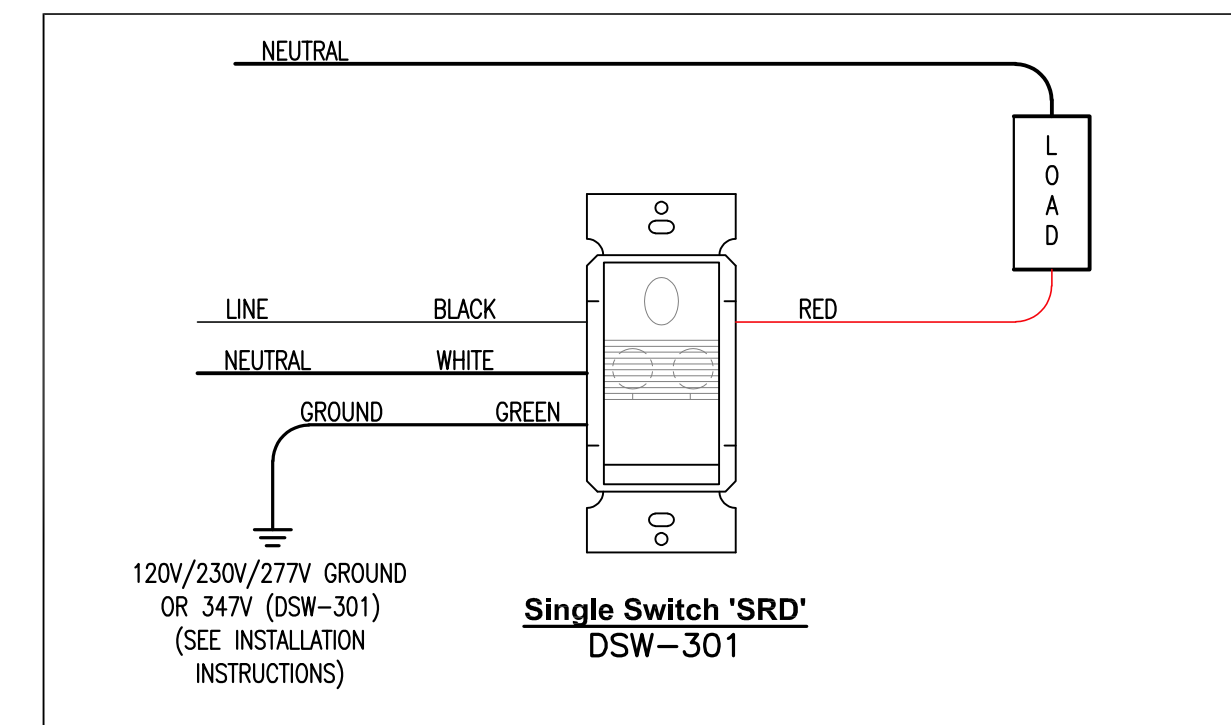
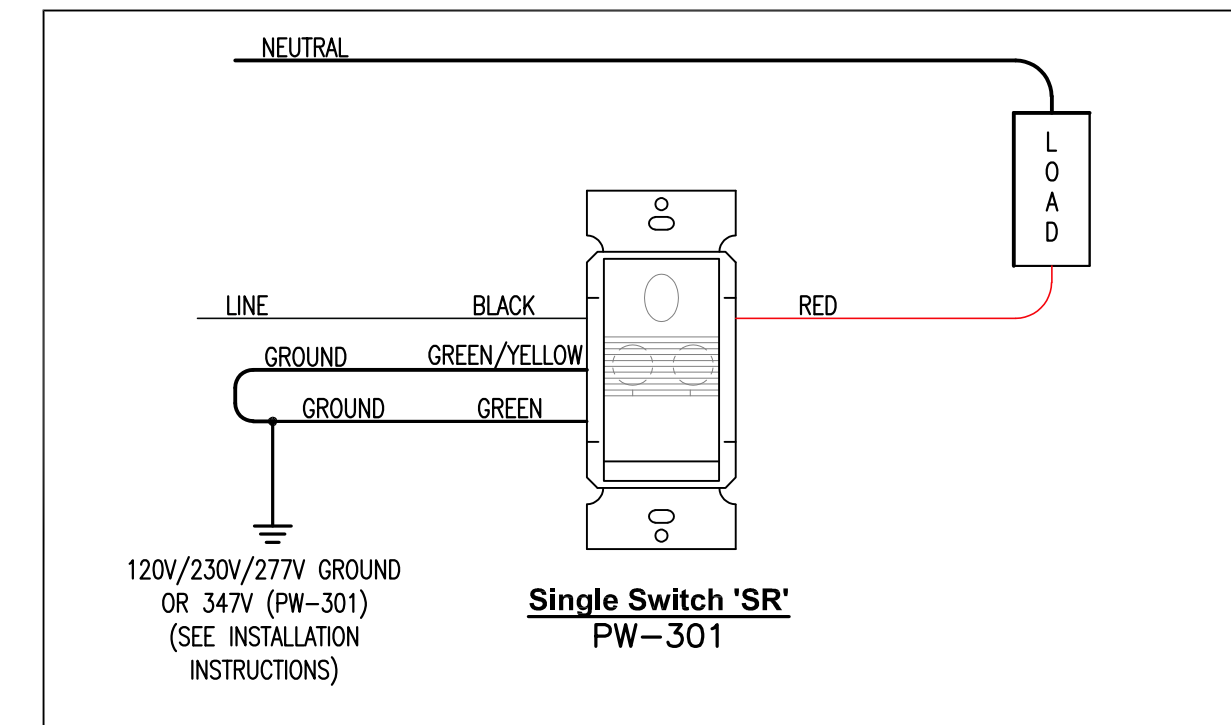
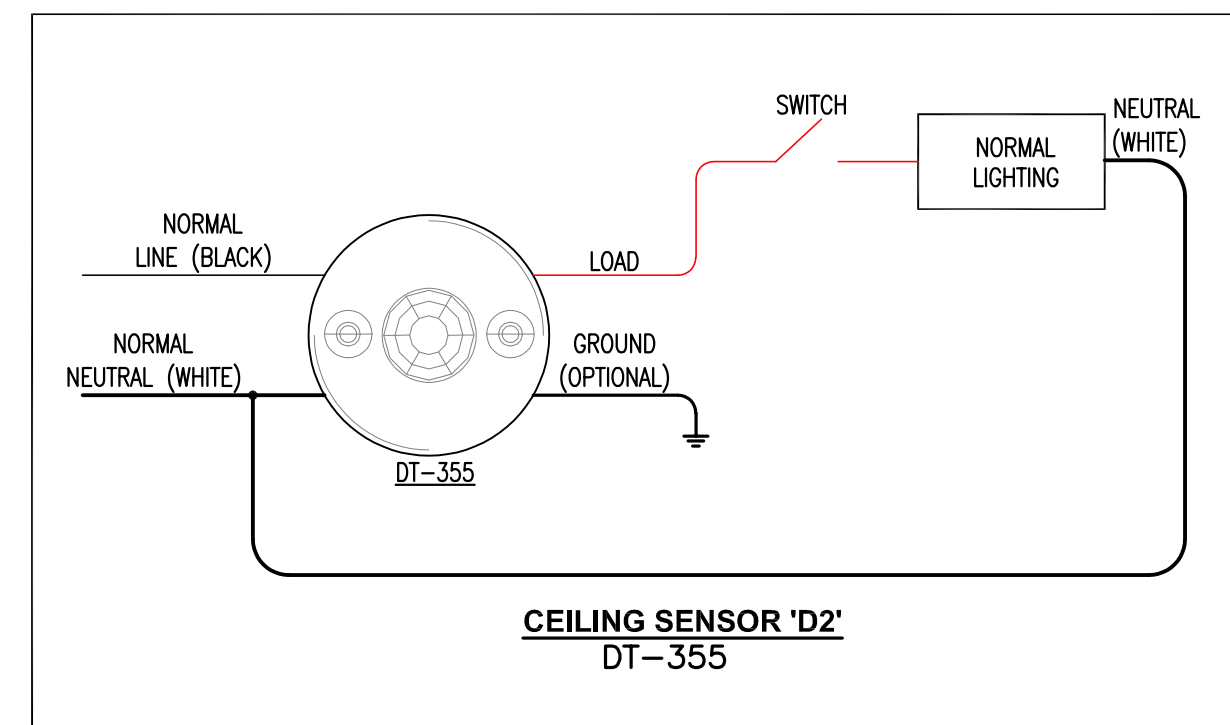
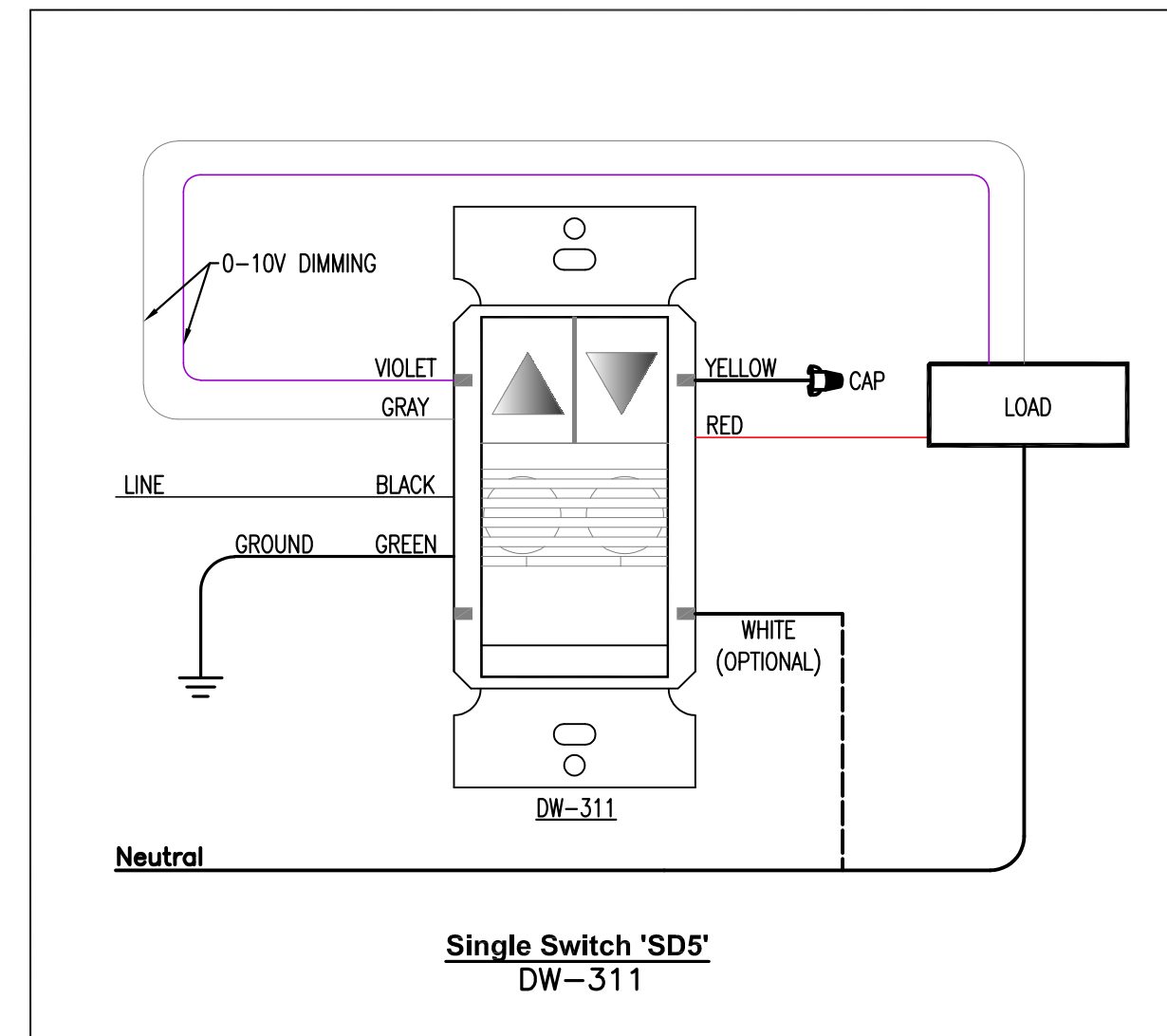
EQUALS TO BE SUBMITTED TO ARCHITECT/ENGINEER 10 DAYS PRIOR TO SUBMITTING BID FOR APPROVAL.

LIGHTING FIXTURE SCHEDULE

| MARK | MANUFACTURER AND CATALOG No. | LAMPS | | MOUNTING | REMARKS |
|---------------|---|-------|-----------|------------------------|--|
| | | No. | TYPE | | |
| BP | CHLORIDE #CLU2NW | 2 | 1.5 W LED | WALL @ 7'-6" AFF | 120V |
| BPX BPXA | CHLORIDE #CLCNRW | -- | LED | WALL @ 7'-6" AFF | BATTERY PACK/EXIT SIGN COMBO. SELF-DIAGNOSTICS. 120V. USE PUNCH-OUTS TO SHOW DIRECTIONAL ARROWS AS DENOTED ON DRAWING(S) |
| LD4 | H.E. WILLIAMS #4DR-TL-L10/835-DIM-UNV-OW-OF-CS-MWT-N-F1 | 9W | 3500K LED | CEILING RECESSED | 4" RECESSED DOWNLIGHT, STD 0-10V DIMMING, 120V. |
| LD6A | H.E. WILLIAMS #6DR-TL-L10/835-DIM-UNV-OW-OF-CS-MWT-N-F1 | 9W | 3500K LED | CEILING RECESSED | 6" RECESSED DOWNLIGHT, STD 0-10V DIMMING, 120V. |
| LD6B | H.E. WILLIAMS #6DR-TL-L30/835-DIM-UNV-OW-OF-CS-MWT-N-F1 | 27W | 3500K LED | CEILING RECESSED | 6" RECESSED DOWNLIGHT, STD 0-10V DIMMING, 120V. |
| LP4A | H.E. WILLIAMS #BP-24-LS(3500L)/8CS(3500K)-DIM-UNV | 29W | 3500K LED | CEILING LAY-IN | 2'x4' LED FLAT PANEL LAY-IN, STD 0-10V DIMMING, UNV VOLT |
| LP4B | H.E. WILLIAMS #BP-24-LS(4700L)/8CS(3500K)-DIM-UNV | 39W | 3500K LED | CEILING LAY-IN | 2'x4' LED FLAT PANEL LAY-IN, STD 0-10V DIMMING, UNV VOLT |
| LP4C | H.E. WILLIAMS #BP-24-LS(5700L)/8CS(3500K)-DIM-UNV | 49W | 3500K LED | CEILING LAY-IN | 2'x4' LED FLAT PANEL LAY-IN, STD 0-10V DIMMING, UNV VOLT |
| LS2 | H.E. WILLIAMS #75R-2-L15/835-DRV-UNV-WG-75 | 10W | 3500K LED | WALL MOUNT | 2" HIGH OUTPUT LED STRIP, 3500K, UNV VOLT, W/ WIRE GUARD |
| LS4 | H.E. WILLIAMS #75R-4-L50/835-DRV-UNV-WG-75 | 33W | 3500K LED | SURFACE MOUNT | 4" HIGH OUTPUT LED STRIP, 3500K, UNV VOLT, W/ WIRE GUARD |
| WB36E | H.E. WILLIAMS #VWPH-L30-740-IFI-SDGL-EM/10WC-DIM-UNV | 27W | 4000K LED | WALL MOUNT | EXTERIOR WALLPACK, FINISH BY ARCH. EMERGENCY DRIVER, 120V |
| XXV XC/XCA | CHLORIDE #CLXNRW | 1 | LED | CEILING/ WALL MOUNT | THERMOPLASTIC LED EXIT SIGN. SELF-DIAGNOSTICS. 120V. USE PUNCH-OUTS TO SHOW DIRECTIONAL ARROWS AS DENOTED ON DRAWING(S) |



1 TYPICAL LAY-IN FIXTURE DETAIL
E0.2 SCALE: N.T.S.



Design - Build Contractor

230 West 5th Street
Panama City, FL 32401
(850) 215-5540

LYNN HAVEN
METHODIST CHURCH
3203 MINNESOTA AVENUE
LYNN HAVEN, FL 32444

| REVISION | | |
|----------|-------------|------|
| # | DESCRIPTION | DATE |
| | | |
| | | |
| | | |

Designed By:
A. DAVIS

Drawn By:
C. DANIELS

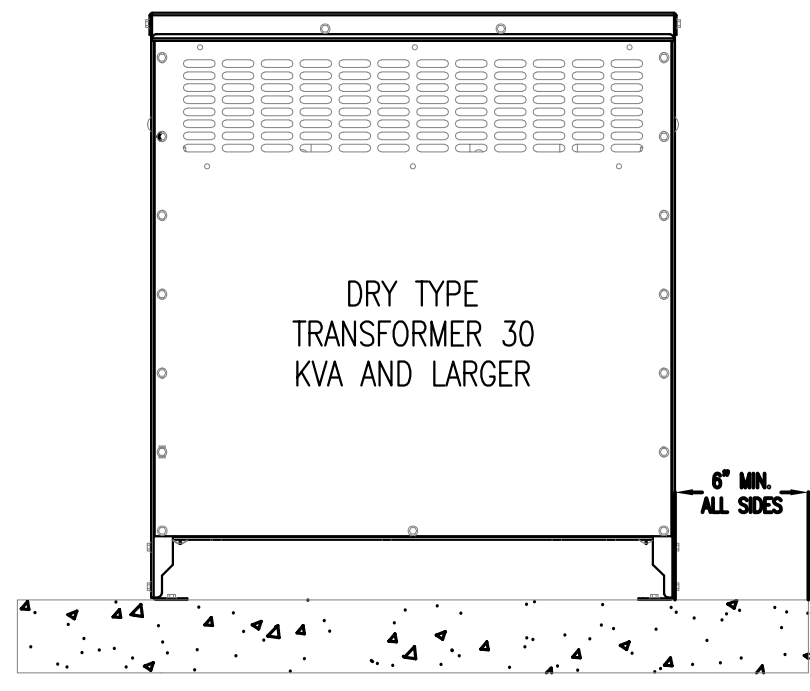
LIGHTING FIXTURE
SCHEDULE AND
DETAILS

E0.2

03/10/2025 10:00:00 AM



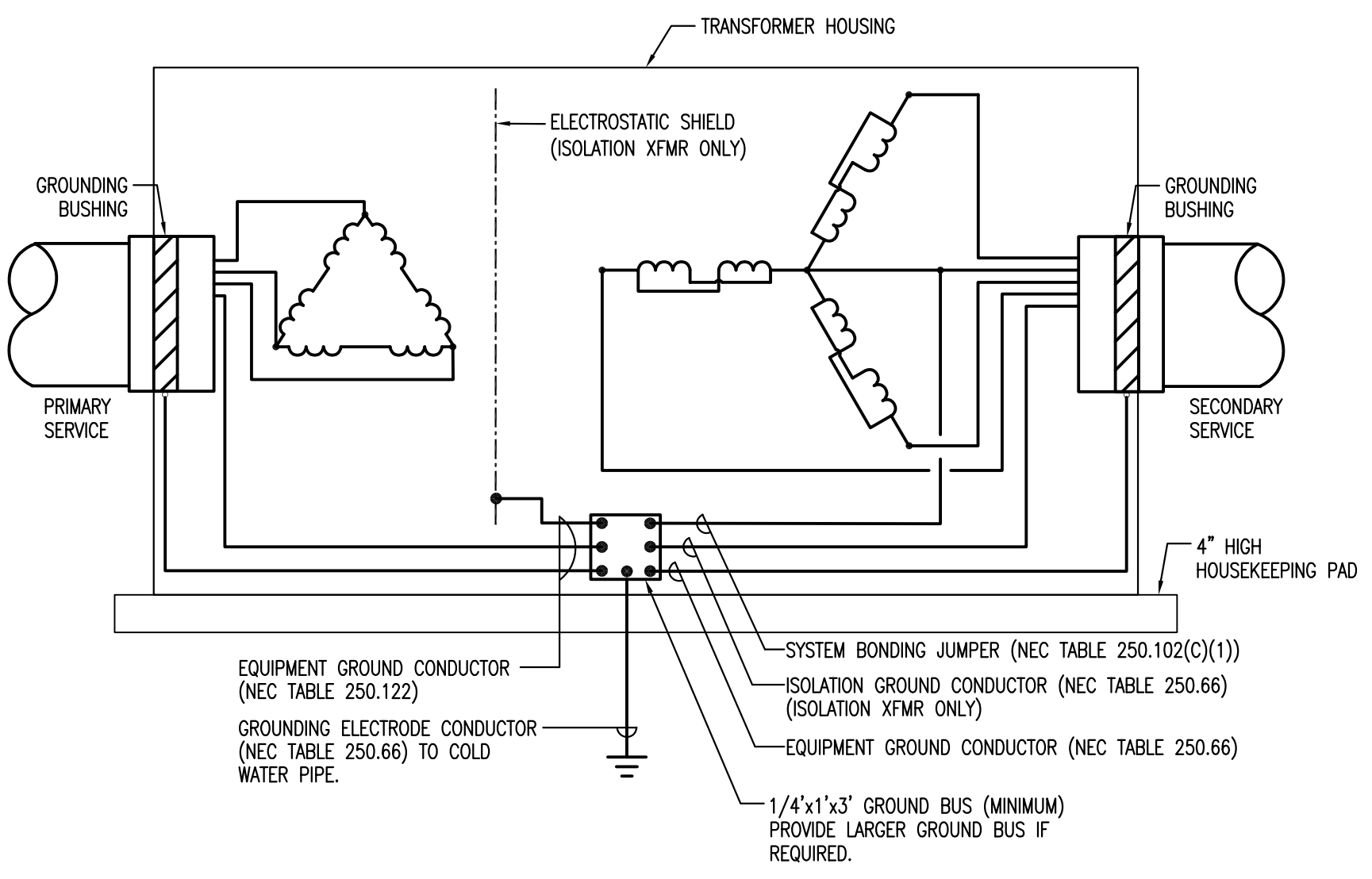
No Part Of These Documents May Be Reproduced, Stored In a Retrieval System, OR Transmitted In Any Form Or By Any Means, Electronic, Mechanical, Photocopying, Recording, Or Otherwise, Without The Prior Written Permission Of: ReliantSouth Construction Group.



DRY-TYPE TRANSFORMER MOUNTING DETAIL

2
EO.3

SCALE: N.T.S.



TYPICAL TRANSFORMER GROUNDING DIAGRAM

3
EO.3

SCALE: N.T.S.

CIRCUIT BREAKER PANEL SCHEDULE EXISTING PANEL 'AC3'

120/208 VOLT 3Ø 4W
250 AMP MAIN LUG ONLY

SURFACE MOUNTED
NEMA 3R ENCLOSURE

| CKT | LOAD DESCRIPTION | BREAKER POLE AMP | LOAD KVA | BREAKER AMP POLE | LOAD DESCRIPTION | CKT |
|-----|------------------|------------------|--------------|------------------|---|-----|
| 1 | DCU 1 | 2 25 | | 20 1 | DORM 1&2 RECPTS OUTSIDE | 2 |
| 3 | | | 1.08 | 20 1 | (DORM 1 OUTSIDE REC) REC-COUNSEL 140/141 | 4 |
| 5 | DCU 2 | 2 25 | 1.08 | 20 1 | (NURSERY CORR. REC) REC-YOUTH OFFICE 130 | 6 |
| 7 | | | 0.72 | 20 1 | (NURSERY RECPTS) REC-YOUTH BREAKOUT 126 | 8 |
| 9 | DCU 3 | 2 15 | 1.26 | 20 1 | (CHILD RM 115 REC) REC-YOUTH BREAKOUT 127 | 10 |
| 11 | | | | 20 1 | CHILD RM 116 BREAK OUT RECPTS | 12 |
| 13 | | | 0.00 | 20 1 | SOCIAL/MULT. CLASS 1 RECPTS | 14 |
| 15 | | | | 20 1 | SOCIAL/MULT. PLAY AREA RECPTS | 16 |
| 17 | (SPACE) | HPU-6 | (1) 2 (-) 15 | 20 1 | SOCIAL/MULT. CLASS 2 RECPTS | 18 |
| 19 | (SPACE) | | (1) 2 (-) 15 | 15 1 | WESTSIDE SOCIAL/MULTI. RECPTS | 20 |
| 21 | (SPACE) | AH-6 | (1) 2 (-) 20 | 20 1 | SPARE | 22 |
| 23 | (SPACE) | | (1) 2 (-) 20 | 20 1 | CHILD RM 116 BREAK OUT RECPTS | 24 |
| 25 | SPACE | | 0.72 (-) 20 | 1 (SPACE) | REC-PASTOR STUDY 131 | 26 |
| 27 | | | 0.72 (-) 20 | 1 (SPACE) | REC-PRAYER 142 | 28 |
| 29 | | | | 1 | SPACE | 30 |
| 31 | | | | | | 32 |
| 33 | | | | | | 34 |
| 35 | | | | | | 36 |
| 37 | | | | | | 38 |
| 39 | | | | | | 40 |
| 41 | | | | | | 42 |

TOTAL CONNECTED LOAD: 21.5 KVA
MINIMUM INTERRUPTING CAPACITY: 22,000 AMPS SYMMETRICAL

*PANEL IS AN SIEMENS P1, CAT# P1X42MC250AT, LOCATED AT SOUTH EXTERIOR WALL FED VIA 70/3 IN PANEL B2. TOTAL CONNECTED LOAD ON PANEL IS INCREASING 13.60KVA. NEW CONNECTED LOAD: XX.XXX

CIRCUIT BREAKER PANEL SCHEDULE EXISTING PANEL 'C1'

120/208 VOLT 3Ø 4W
150 AMP MAIN BREAKER
SERVICE-RATED

RECESSED MOUNTED
NEMA 1 ENCLOSURE

| CKT | LOAD DESCRIPTION | BREAKER POLE AMP | LOAD KVA | BREAKER AMP POLE | LOAD DESCRIPTION | CKT |
|-----|---------------------------|--------------------|-----------|------------------|-----------------------------|-----|
| 1 | SOUND BOOTH RECEPIS | 1 20 | | 20 1 | PULPIT STAGE RECEPIS | 2 |
| 3 | SOUND BOOTH RECEPIS | 1 20 | | 20 1 | PULPIT STAGE RECEPIS | 4 |
| 5 | SOUND BOOTH RECEPIS | 1 20 | | 20 1 | PULPIT STAGE RECEPIS | 6 |
| 7 | (SPARES) | REC-OFFICE 134 | 1 20 0.36 | 20 1 | PULPIT STAGE RECEPIS | 8 |
| 9 | (SPARES) | REC-RECEPTION DESK | 1 20 0.18 | 20 1 | PULPIT STAGE RECEPIS | 10 |
| 11 | CHILDREN RM EAST WALL | 1 20 | | 20 1 | CHURCH OPERATIONS RECEPIS | 12 |
| 13 | CHILDREN 1&3 EAST RECEPIS | 1 20 | | 20 1 | PASTORS RECEPIS | 14 |
| 15 | CHILDREN EAST RECEPIS | 1 20 | | 20 1 | COPY ROOM COPY MACH. | 16 |
| 17 | (SPARES) | REC-OFFICE 136 | 1 20 0.54 | 20 1 | COPY ROOM RECEPIS | 18 |
| 19 | SPARES | | 1 20 | 20 1 | CORRIDOR AND RM 107 RECEPIS | 20 |
| 21 | SPACE | | | 20 1 | RM 107 RECEPIS | 22 |
| 23 | | | | -- 1 | SPACE | 24 |
| 25 | | | | -- 1 | SPACE | 26 |
| 27 | | | | -- 1 | SPACE | 28 |
| 29 | | | | -- 1 | SPACE | 30 |

MINIMUM INTERRUPTING CAPACITY: 22,000 AMPS SYMMETRICAL

*PANEL IS AN EATON PRL1A, NEUTRAL CAT# 1C96649G02, LOCATED IN SANCTUARY
*TOTAL CONNECTED LOAD ON PANEL IS INCREASING 1.08 KVA

CIRCUIT BREAKER PANEL SCHEDULE EXISTING PANEL 'HVAC1'

277/480 VOLT 3Ø 4W
250 AMP MAIN LUG ONLY
SERVICE-RATED

SURFACE MOUNTED
NEMA 1 ENCLOSURE

| CKT | LOAD DESCRIPTION | BREAKER POLE AMP | LOAD KVA | BREAKER AMP POLE | LOAD DESCRIPTION | CKT |
|-----|------------------|------------------|---------------|------------------|------------------------|-----|
| 1 | (AIR HANDLER) | SPARE | | | | 2 |
| 3 | (AIR HANDLER) | SPARE | | | | 4 |
| 5 | | | | | | 6 |
| 7 | | | | | | 8 |
| 9 | SPARE | | | 35 3 | (AC CONDENSER A) SPARE | 10 |
| 11 | | | | | | 12 |
| 13 | SPACE | | | | | 14 |
| 15 | | | | 35 3 | (AC CONDENSER B) SPARE | 16 |
| 17 | | | | | | 18 |
| 19 | (SPACE) | | | | | 20 |
| 21 | (SPACE) | PHPU-2 | (1) 3 (-) 30 | 15 3 | | 22 |
| 23 | (SPACE) | | | (1) 1 (-) 1 | | 24 |
| 25 | (SPACE) | | | (1) 1 (-) 1 | | 26 |
| 27 | (SPACE) | PANEL C3 VIA T5 | (1) 3 (-) 100 | 75 3 | | 28 |
| 29 | (SPACE) | | | (1) 1 (-) 1 | | 30 |

*TOTAL DEMAND LOAD: 89.7 KVA
TOTAL CONNECTED LOAD: 101.1 KVA
MINIMUM INTERRUPTING CAPACITY: 22,000 AMPS SYMMETRICAL

*RECEPTACLE LOAD PER NEC 220.44 DIVERSIFIED IN PANEL C3.
**PANEL IS AN SIEMENS P1, CAT# P1E30E4125ATSI, LOCATED IN WEST HALL

CIRCUIT BREAKER PANEL SCHEDULE EXISTING PANEL 'A'

277/480 VOLT 3Ø 4W
400 AMP MAIN LUG ONLY

SURFACE MOUNTED
NEMA 1 ENCLOSURE

| CKT | LOAD DESCRIPTION | BREAKER POLE AMP | LOAD KVA | BREAKER AMP POLE | LOAD DESCRIPTION | CKT |
|-----|---------------------|------------------|----------|------------------|------------------|-----|
| 1 | RTU #5 | 3 110 | 72.49 | | | 2 |
| 3 | RTU 1 | 3 70 | 42.56 | 42.56 70 3 | RTU 3 | 4 |
| 5 | | | | | | 6 |
| 7 | RTU 2 | 3 70 | 42.56 | 21.28 40 3 | RTU 4 | 8 |
| 9 | | | | | | 10 |
| 11 | | | | | | 12 |
| 13 | AV LIGHTING XFORMER | 3 20 | 1.05 | 34.59 (20) 60 3 | (SPARE) PHPU-1 | 14 |
| 15 | | | | | | 16 |
| 17 | | | | | | 18 |
| 19 | | | | | | 20 |
| 21 | SPARE | 3 20 | | 20 3 | SPARE | 22 |
| 23 | | | | | | 24 |
| 25 | SPARE | 3 20 | | 20 3 | SPARE | 26 |
| 27 | | | | | | 28 |
| 29 | | | | | | 30 |

TOTAL CONNECTED LOAD: 214.5 KVA
MINIMUM INTERRUPTING CAPACITY: 22,000 AMPS SYMMETRICAL

*PANEL IS A SIEMENS P1, CAT# P1E30M400ATS, LOCATED IN MAIN ELECTRICAL ROOM
*TOTAL CONNECTED LOAD ON PANEL IS INCREASING 34.59 KVA. PANEL IS SUFFICIENTLY PROTECTED BY 300A BKR IN MAIN PANEL 'MDP'. PANEL HAS FOUR 20/3 SPARE BREAKERS. REPLACE BREAKER IN 14/16/18 WITH 60/3 BREAKER FOR 'PHPU-1'.

CIRCUIT BREAKER PANEL SCHEDULE PANEL 'C3'

120/208 VOLT 3Ø 4W
225 AMP MAIN BREAKER

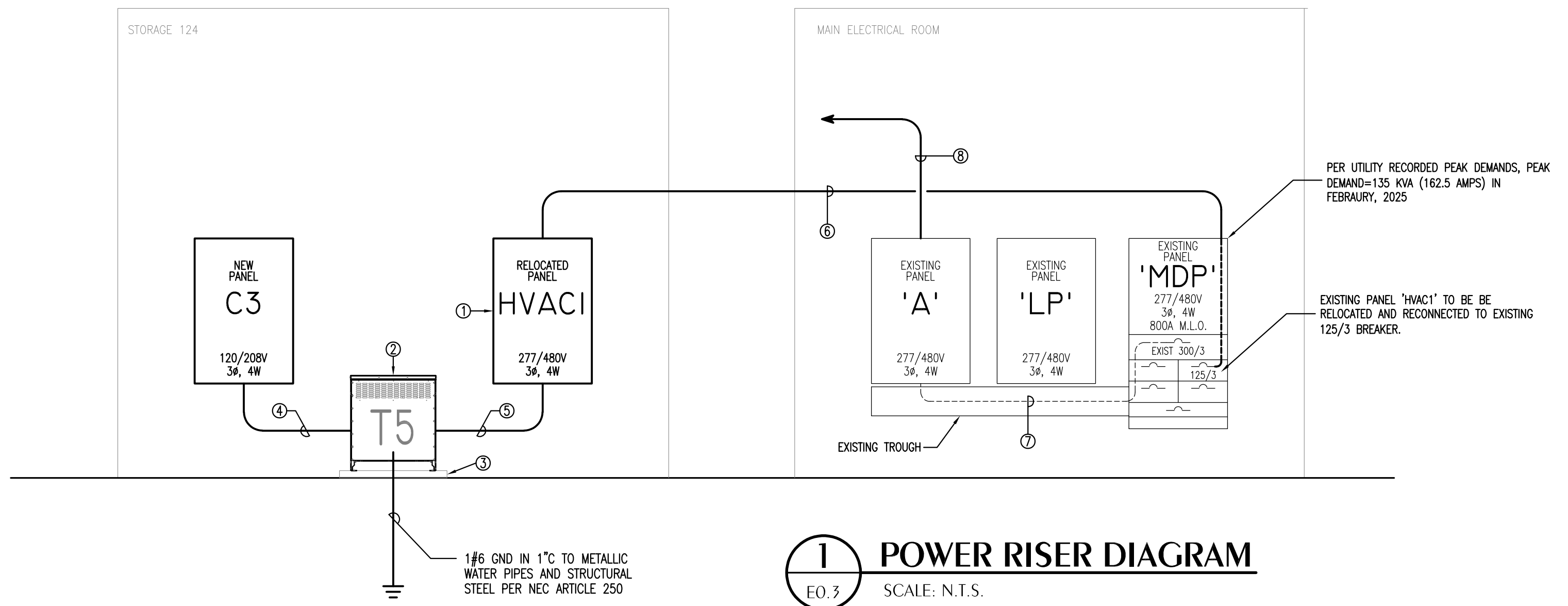
SURFACE MOUNTED
NEMA 1 ENCLOSURE

| CKT | LOAD DESCRIPTION | BREAKER POLE AMP | LOAD KVA | BREAKER AMP POLE | LOAD DESCRIPTION | CKT |
|-----|---|------------------|----------|------------------|--------------------|-----|
| 1 | REC-GIRLS#124 | 1 20 | 0.18 | 3 19 | 3Ø 2 HPU-1 | 2 |
| 3 | REC-BOYS#123/EXTERIOR | 1 20 | 0.36 | | | 4 |
| 5 | REC-SPECIALNEEDS#117 | 1 20 | 1.44 | 4.89 | 5Ø 2 HPU-2 | 6 |
| 7 | REC-CLASS#111 | 1 20 | 1.26 | | | 8 |
| 9 | REC-TODDLERS#110/EXTERIOR | 1 20 | 1.26 | 2.71 | 25Ø 2 HPU-3 | 10 |
| 11 | REC-TODDLERS#110 | 1 20 | 0.54 | | | 12 |
| 13 | REC-BATH#122 | 1 20 | 0.18 | 2.25 | 20Ø 2 HPU-4 | 14 |
| 15 | REC-TODDLERS#109 | 1 20 | 0.36 | | | 16 |
| 17 | REC-TODDLERS#109 | 1 20 | 1.44 | 4.89 | 5Ø 2 HPU-5 | 18 |
| 19 | REC-NURSERY#108 | 1 20 | 0.90 | | | 20 |
| 21 | REC-NURSERY#108 | 1 20 | 0.54 | 4.54 | 3Ø 2 AH-1 | 22 |
| 23 | REC-NURSERY#107 | 1 20 | 0.54 | | | 24 |
| 25 | REC-NURSERY#107 | 1 20 | 0.90 | 7.12 | 45Ø 2 AH-2 | 26 |
| 27 | REC-RECEPTION#103 | 1 20 | 1.08 | | | 28 |
| 29 | REC-OFFICE#105 | 1 20 | 0.72 | 4.54 | 3Ø 2 AH-3 | 30 |
| 31 | REC-OFFICE#104 | 1 20 | 0.72 | | | 32 |
| 33 | REC-REHEARSAL#106 | 1 20 | 0.54 | 4.54 | 3Ø 2 AH-4 | 34 |
| 35 | REC-REHEARSAL#106 | 1 20 | 0.36 | | | 36 |
| 37 | REC-REHEARSAL#106/CORRIDOR#101 | 1 20 | 0.36 | 7.12 | 45Ø 2 AH-5 | 38 |
| 39 | REC-REHEARSAL#106 | 1 20 | 0.90 | | | 40 |
| 41 | REC-RECEPTION#103 | 1 20 | 0.72 | 4.50 | 3Ø 2 EVH-1 | 42 |
| 43 | REC-CLASS#112/CORRIDOR#101 | 1 20 | 1.44 | | | 44 |
| 45 | REC-CLASS#113 | 1 20 | 1.26 | 0.04 | 15 1 CP-1 | 46 |
| 47 | REC-CORRIDOR#101 | 1 20 | 0.90 | 1.49 | 20 1 LIS-N | 48 |
| 49 | REC-CLASS#114/CORRIDOR#101 | 1 20 | 1.62 | 1.51 | 20 1 LIS-S | 50 |
| 51 | REC-CLASS#115/EXTERIOR | 1 20 | 1.44 | 1.15 | 20 1 LIS-E | 52 |
| 53 | REC-CLASS#116/BATHROOM#125 | 1 20 | 1.44 | 1.35 | 20 1 LIS-W | 54 |
| 55 | WATER COOLER | 1 20 | 0.37 | 0.18 | 20 1 REC-PLAY AREA | 56 |
| 57 | REC-GATHERING ROOM#121 STAGE | 1 20 | 0.18 | 0.18 | 20 1 REC-PLAY AREA | 58 |
| 59 | REC-GATHERING ROOM#121 STAGE | 1 20 | 0.18 | -- | 20 1 SPARE | 60 |
| 61 | REC-GATHERING ROOM#121 STAGE | 1 20 | 0.18 | -- | 20 1 SPARE | 62 |
| 63 | REC-GATHERING ROOM#121 STAGE | 1 20 | 0.18 | -- | 20 1 SPARE | 64 |
| 65 | REC-GATHERING ROOM#121 STAGE | 1 20 | 0.36 | -- | 20 1 SPARE | 66 |
| 67 | REC-GATHERING #121/RECEPTION#103/STO.#118 | 1 20 | 1.26 | -- | 1 SPARE | 68 |
| 69 | REC-AV#120/CAIHER.#121/HALL#102/STO.#119 | 1 20 | 1.26 | | | 70 |
| 71 | REC-AV#120 | 1 20 | 0.36 | | | 72 |
| 73 | REC-CATHERING#121/HALLWAY #102 | 1 20 | 1.08 | | | 74 |
| 75 | REC-AV#120 | 1 20 | 0.36 | | | 76 |
| 77 | REC-AV#120 | 1 20 | 0.36 | | | 78 |
| 79 | SPARE | 1 20 | -- | | | 80 |
| 81 | SPARE | 1 20 | -- | | | 82 |
| 83 | SPARE | 1 20 | -- | | | 84 |

*TOTAL DEMAND LOAD: 73.70 KVA
TOTAL CONNECTED LOAD: 95.16 KVA
MINIMUM INTERRUPTING CAPACITY: 10,000 AMPS SYMMETRICAL

ⓐ HACR RATED BREAKER. VERIFY SIZE REQUIRED FOR EQUIPMENT FURNISHED
ⓑ FURNISH GFCI BREAKER

- POWER RISER KEYNOTES**
- ① PANEL TO BE RELOCATED FROM WEST HALL TO STORAGE 124. REFER TO 'NEW WORK POWER PLAN AREA A & B', SHEET 'E2.1', FOR EXACT LOCATION.
 - ② 75 KVA DRY TYPE TRANSFORMER; 277/480V - 208Y/120V;
 - ③ 4" HIGH HOUSEKEEPING PAD SHALL BE 4" LARGER THAN FOOTPRINT OF EQUIPMENT.
 - ④ INSTALL 4#4/0, 1#2 ISOL GND, 1#2GND IN 2-1/2"C.
 - ⑤ INSTALL 3#3, 1#8GND IN 1-1/2"C.
 - ⑥ INSTALL 4#1, 1#8GND IN 2"C.
 - ⑦ EXISTING FEEDER TO REMAIN.
 - ⑧ INSTALL 3#4, 1#8GND IN 1-1/4"C. TO 'PHPU-1'. REFER TO 'NEW WORK POWER PLAN AREA A & B', SHEET 'E2.1', FOR EXACT LOCATION.



1 POWER RISER DIAGRAM

EO.3

SCALE: N.T.S.



Design - Build Contractor
230 West 5th Street
Panama City, FL 32401
(850) 215-5540

**LYNN HAVEN
METHODIST CHURCH**
3203 MINNESOTA AVENUE
LYNN HAVEN, FL 32444

REVISION

| # | DESCRIPTION | DATE |
|---|-------------|------|
| | | |
| | | |
| | | |
| | | |
| | | |

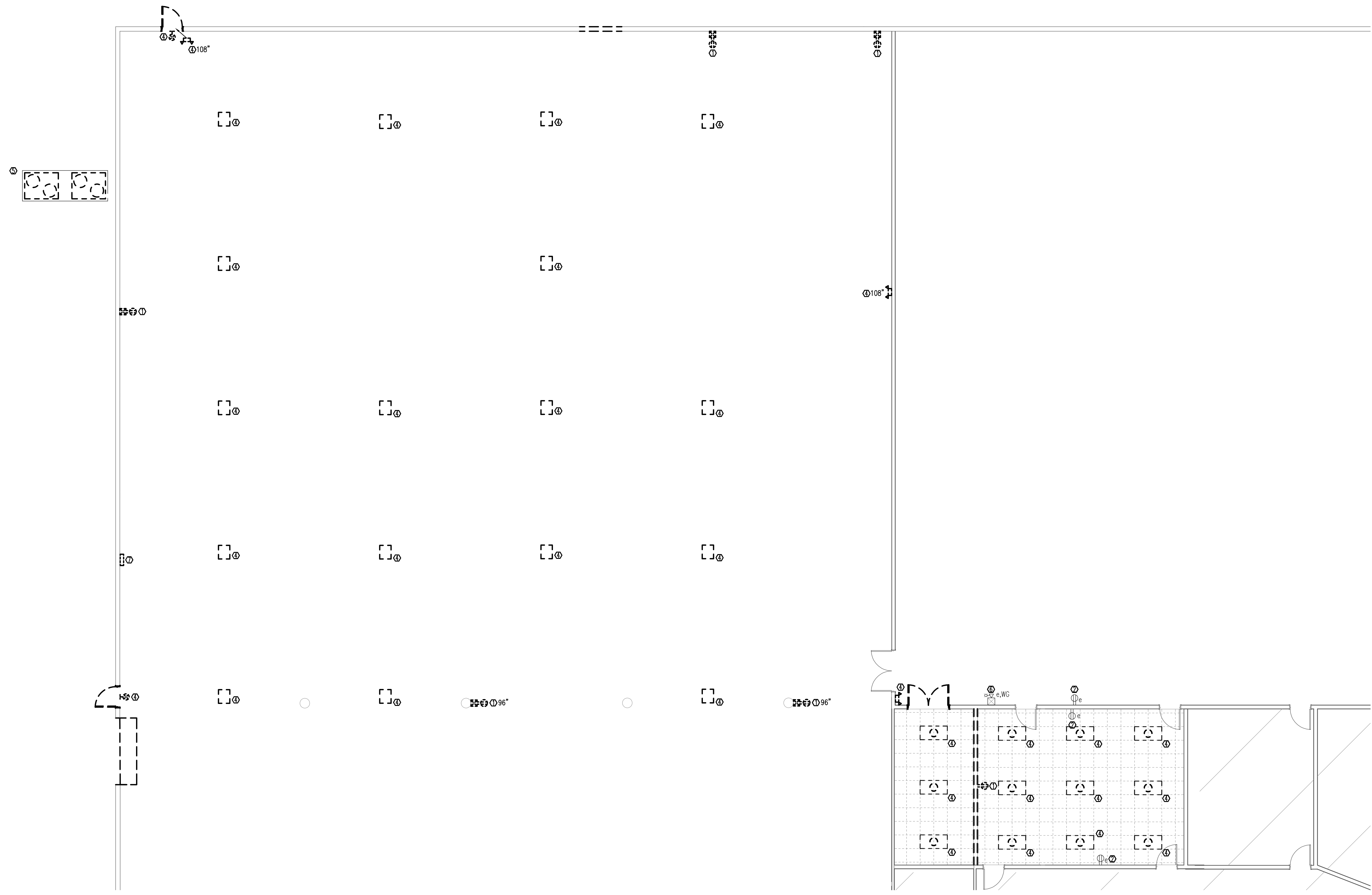
Designed By: **A.DAVIS**
Drawn By: **C.DANIELS**

POWER RISER, PANEL SCHEDULES, AND DETAILS

E0.3
03/10/2025 10:00:00 AM



No Part Of These Documents May Be Reproduced, Stored In a Retrieval System, OR Transmitted In Any Form Or By Any Means, Electronic, Mechanical, Photocopying, Recording, Or Otherwise, Without The Prior Written Permission Of: ReliantSouth Construction Group.



1 ELECTRICAL DEMOLITION PLAN AREA A & B
 E1.1 SCALE: 1/8" = 1'-0"

- KEYNOTES**
- ① EC TO REMOVE CIRCUIT BACK TO NEAREST JUNCTION BOX (SOURCE TO REMAIN). MAINTAIN CONTINUITY TO ANY REMAINING LOADS ON BRANCH CIRCUIT. IF NO ACTIVE LOADS REMAIN, LABEL BKR "SPARE".
 - ② EXISTING DEVICE LOCATION TO REMAIN. SEE SHEET E1.2 FOR CIRCUIT ID IN NEW WORK.
 - ③ IF EXISTING RECEPTACLE IS IN CONFLICT WITH WALL IN NEW WORK, RELOCATE RECEPTACLE TO THE ADJACENT WALL SPACE AS NECESSARY.
 - ④ REMOVE LIGHTING FIXTURE AND CIRCUIT BACK TO NEAREST JUNCTION BOX (SOURCE TO REMAIN). MAINTAIN CONTINUITY TO ANY REMAINING LOADS ON BRANCH CIRCUIT. IF NO ACTIVE LOADS REMAIN, LABEL BKR "SPARE".
 - ⑤ ABANDONED EQUIPMENT TO BE REMOVED BY OTHERS. EC TO REMOVE AND DISPOSE OF ANY REMAINING CIRCUIT AND DISCONNECT BACK TO SOURCE.
 - ⑥ EXISTING FIRE ALARM DEVICE LOCATION TO REMAIN.
 - ⑦ EXISTING PANEL "HVAC1" IS TO BE RELOCATED TO "STORAGE 124" IN NEW WORK. EC TO REMOVE, STORE, AND PROTECT PANELBOARD. REMOVE FEEDER AND CONDUIT, SOME OF WHICH MAY BE REUSED IN NEW WORK. BKR AHEAD OF FEEDER IS TO REMAIN. SEE NEW WORK POWER PLAN, SHEET E2.1.



Design - Build Contractor
 230 West 5th Street
 Panama City, FL 32401
 (850) 215-5540

**LYNN HAVEN
 METHODIST CHURCH**
 3203 MINNESOTA AVENUE
 LYNN HAVEN, FL 32444

| REVISION | | |
|----------|-------------|------|
| # | DESCRIPTION | DATE |
| | | |
| | | |
| | | |
| | | |
| | | |

Designed By:
A.DAVIS
 Drawn BY:
C.DANIELS

**ELECTRICAL
 DEMOLITION PLAN
 AREA A & B**

E1.1

03/10/2025 10:00:00 AM

No Part Of These Documents May Be Reproduced, Stored In a Retrieval System, OR Transmitted In Any Form Or By Any Means, Electronic, Mechanical, Photocopying, Recording, Or Otherwise, Without The Prior Written Permission Of: ReliantSouth Construction Group.



Design - Build Contractor

230 West 5th Street
Panama City, FL 32401
(850) 215-5540

**LYNN HAVEN
METHODIST CHURCH**
3203 MINNESOTA AVENUE
LYNN HAVEN, FL 32444

| REVISION | | |
|----------|-------------|------|
| # | DESCRIPTION | DATE |
| | | |
| | | |
| | | |
| | | |
| | | |
| | | |
| | | |

Designed By:
A. DAVIS

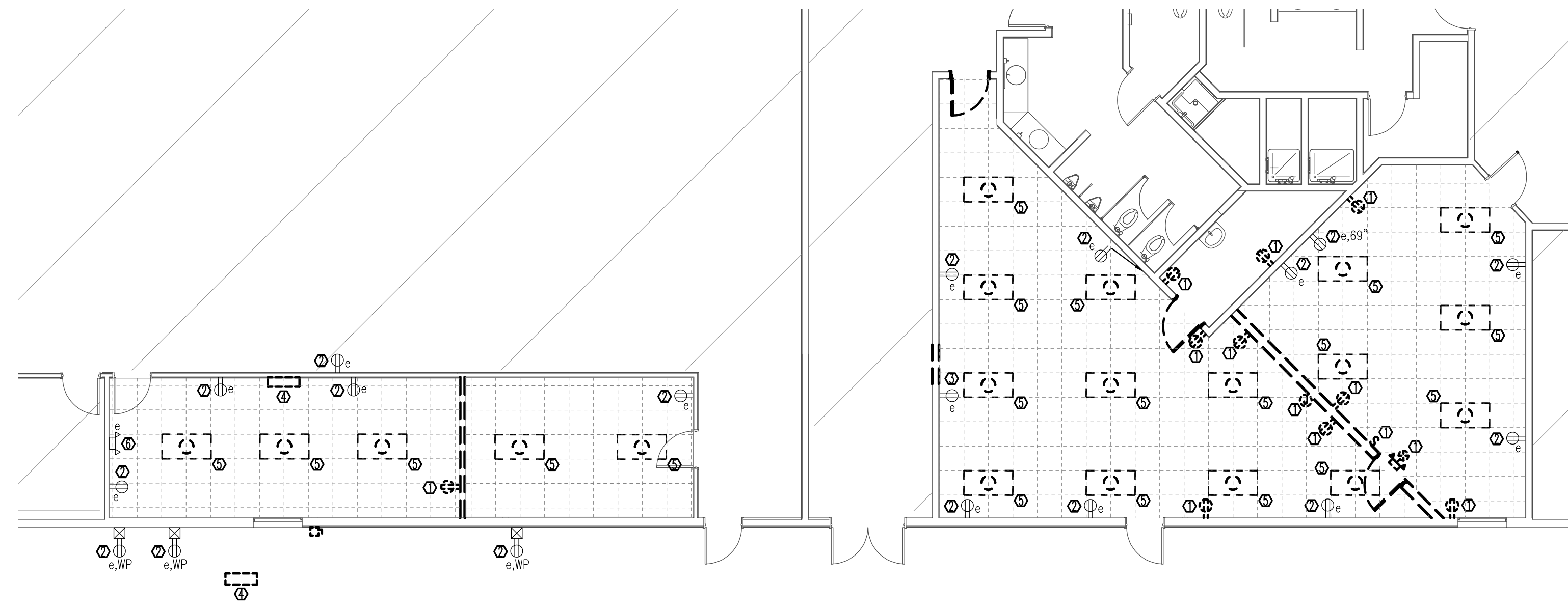
Drawn BY:
C. DANIELS

**ELECTRICAL
DEMOLITION PLAN
AREA C & D**

E1.2

03/10/2025 10:00:00 AM

- KEYNOTES
- Ⓞ EC TO REMOVE DEVICE AND CIRCUIT BACK TO NEAREST JUNCTION BOX (SOURCE TO REMAIN). MAINTAIN CONTINUITY TO ANY REMAINING LOADS ON BRANCH CIRCUIT.
 - Ⓞ EXISTING DEVICE LOCATION TO REMAIN. SEE SHEET E1.2 FOR CIRCUIT ID IN NEW WORK.
 - Ⓞ IF EXISTING RECEPTACLE IS IN CONFLICT WITH WALL IN NEW WORK, RELOCATE RECEPTACLE TO THE ADJACENT WALL SPACE AS NECESSARY.
 - Ⓞ EQUIPMENT TO BE REMOVED BY OTHERS. EC TO REMOVE AND DISPOSE OF DISCONNECT AND CIRCUIT BACK TO SOURCE.
 - Ⓞ EC TO REMOVE AND DISPOSE OF LIGHTING FIXTURE AND CIRCUIT BACK TO SOURCE. MAINTAIN CONTINUITY TO ANY REMAINING LOADS ON BRANCH CIRCUIT.
 - Ⓞ EXISTING LIGHTING FIXTURE TO REMAIN.



ELECTRICAL DEMOLITION PLAN AREA C & D
 SCALE: 1/8" = 1'-0"



No Part Of These Documents May Be Reproduced, Stored In a Retrieval System, OR Transmitted In Any Form Or By Any Means, Electronic, Mechanical, Photocopying, Recording, Or Otherwise, Without The Prior Written Permission Of: ReliantSouth Construction Group.



Design - Build Contractor

230 West 5th Street
Panama City, FL 32401
(850) 215-5540

LYNN HAVEN METHODIST CHURCH

3203 MINNESOTA AVENUE
LYNN HAVEN, FL 32444

| REVISION | | |
|----------|-------------|------|
| # | DESCRIPTION | DATE |
| | | |
| | | |
| | | |
| | | |

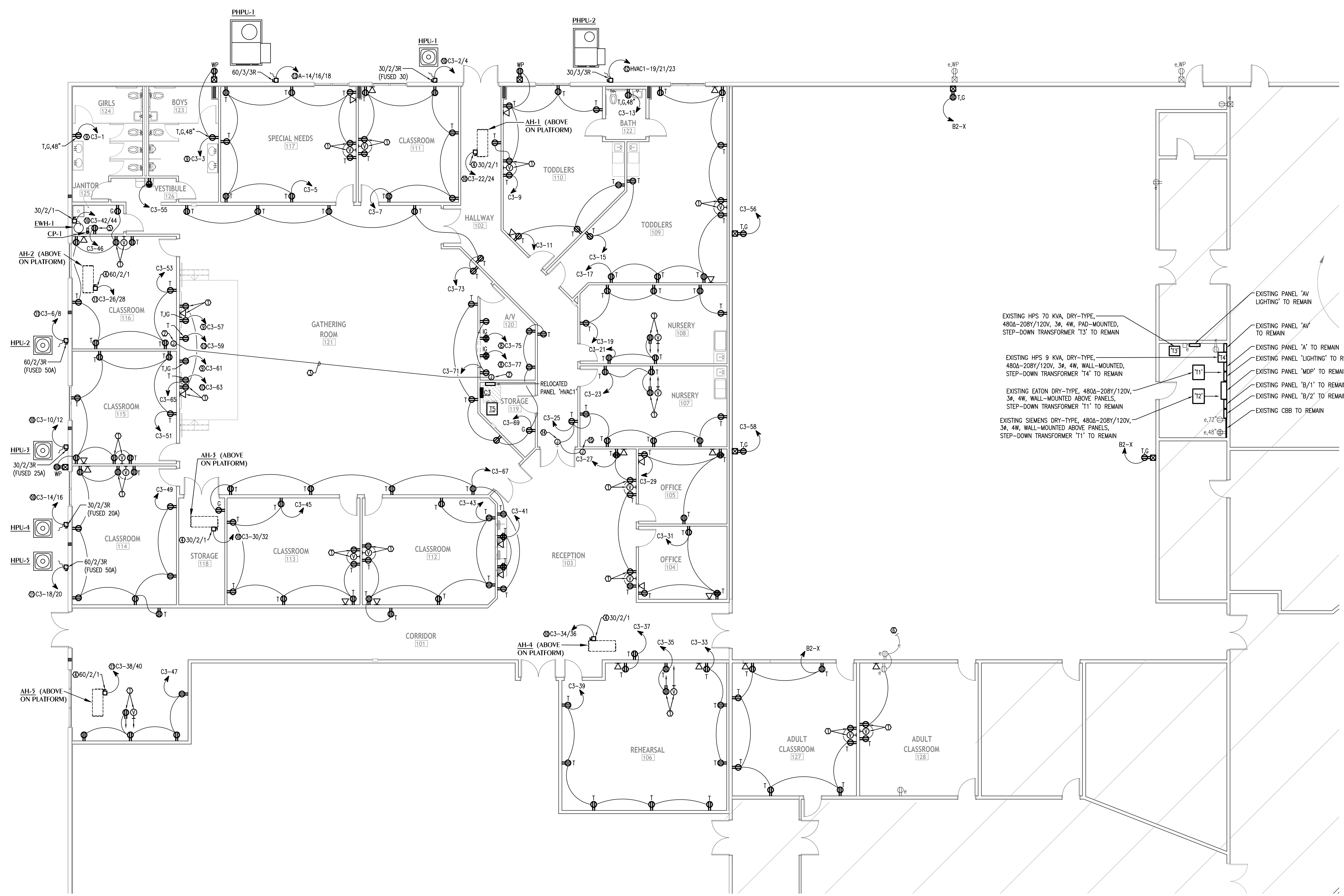
Designed By:
A. DAVIS

Drawn By:
C. DANIELS

ELECTRICAL NEW WORK POWER PLAN AREA A & B

E2.1

03/10/2025 10:00:00 AM



- EXISTING HPS 70 KVA, DRY-TYPE, 480A-208Y/120V, 3Φ, 4W, PAD-MOUNTED, STEP-DOWN TRANSFORMER 'T3' TO REMAIN
- EXISTING HPS 9 KVA, DRY-TYPE, 480A-208Y/120V, 3Φ, 4W, WALL-MOUNTED, STEP-DOWN TRANSFORMER 'T4' TO REMAIN
- EXISTING EATON DRY-TYPE, 480A-208Y/120V, 3Φ, 4W, WALL-MOUNTED ABOVE PANELS, STEP-DOWN TRANSFORMER 'T1' TO REMAIN
- EXISTING SIEMENS DRY-TYPE, 480A-208Y/120V, 3Φ, 4W, WALL-MOUNTED ABOVE PANELS, STEP-DOWN TRANSFORMER 'T1' TO REMAIN
- EXISTING PANEL 'AV LIGHTING' TO REMAIN
- EXISTING PANEL 'A' TO REMAIN
- EXISTING PANEL 'A' TO REMAIN
- EXISTING PANEL 'MDP' TO REMAIN
- EXISTING PANEL 'B/1' TO REMAIN
- EXISTING PANEL 'B/2' TO REMAIN
- EXISTING CBB TO REMAIN

ELECTRICAL NEW WORK POWER PLAN AREA A & B

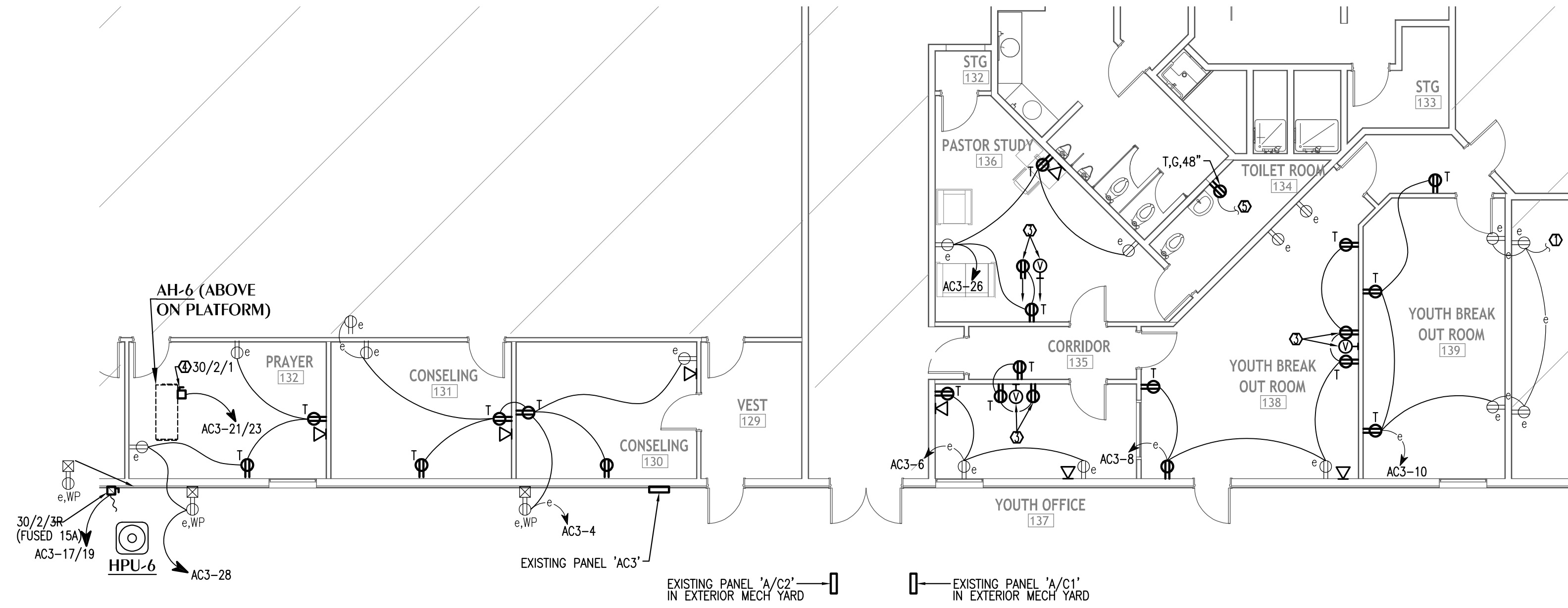
E2.1 SCALE: 1/8" = 1'-0"

GENERAL NOTE(S)
1. ALL RECEPTACLES PROTECTED BY GFCI BREAKER SHALL BE LABELED AS SUCH.

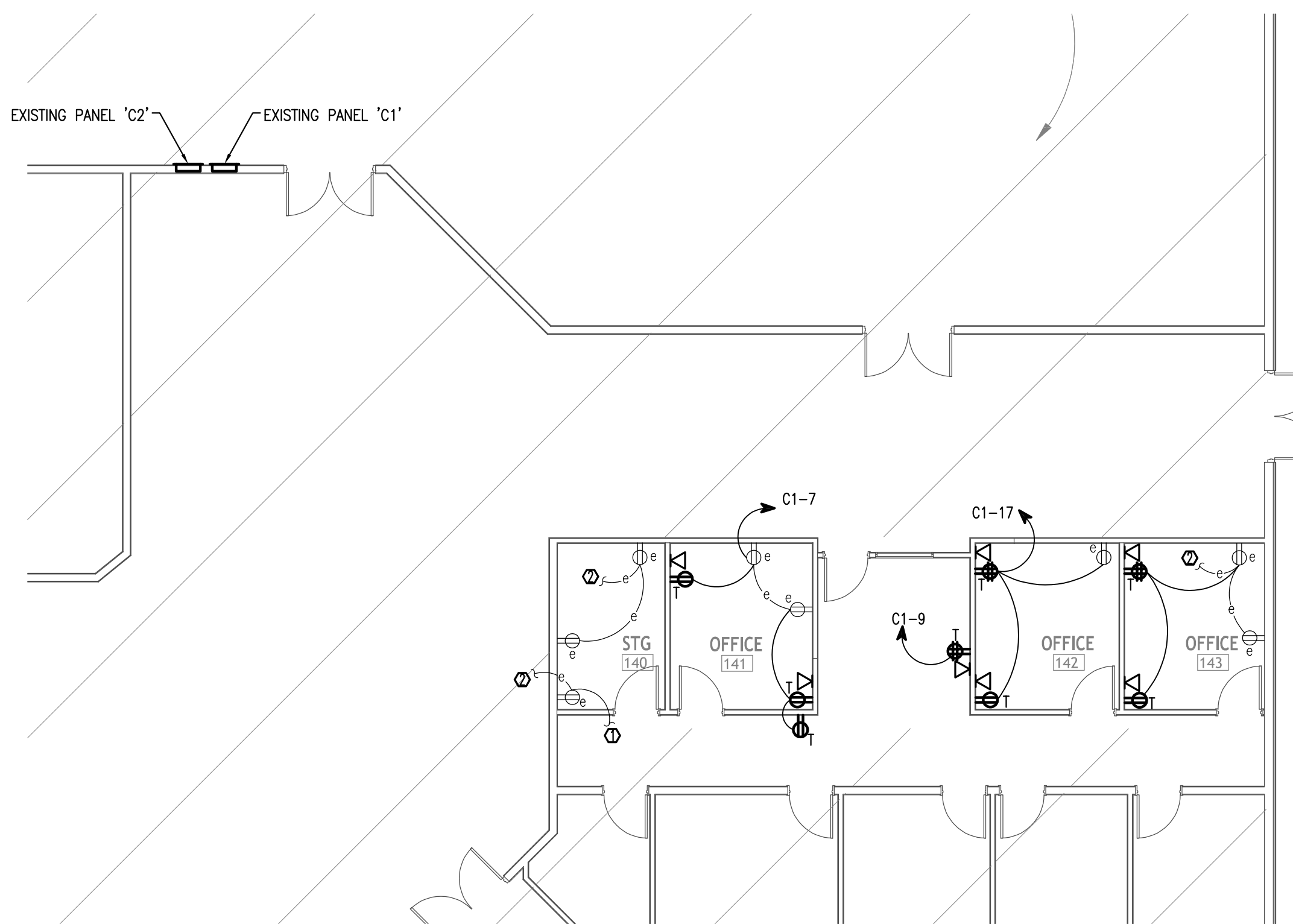
- KEYNOTES
- ① PRIOR TO ROUGH-IN, EC TO COORDINATE WITH GC/ARCHITECT FOR EXACT HEIGHT AND LOCATION OF DEVICES TO SERVE WALL MOUNTED FLAT PANEL SCREEN.
 - ② PRIOR TO ROUGH-IN, EC TO FIELD-COORDINATE THE INSTALLATION OF 12"H X 12"W X 6"D JUNCTION BOX FOR AV TERMINATIONS.
 - ③ EC TO INSTALL TWO (2) 2"C'S (W/ PULLSTRINGS) FOR INSTALLATION OF AV CABLING; PRIOR TO INSTALLATION, FIELD-VERIFY EXACT LOCATION OF J-BOXES AND ROUTING OF CONDUIT WITH GC/OWNER.
 - ④ EC TO INSTALL DISCONNECT DIRECTLY TO MECHANICAL UNIT. EC SHALL COORDINATE WITH MECHANICAL CONTRACTOR/EQUIPMENT MANUFACTURER TO ENSURE THAT EQUIPMENT WARRANTY IS MAINTAINED.
 - ⑤ EC TO COORDINATE WITH GC/MECHANICAL CONTRACTOR FOR EXACT HEIGHT AND LOCATION OF DEVICE FOR CIRCULATION PUMP.
 - ⑥ MAINTAIN EXISTING HOMERUN TO PANEL 'B'.
 - ⑦ CIRCUIT TO BE A MINIMUM 3Φ6, 1#10GND IN 3/4".
 - ⑧ CIRCUIT TO BE A MINIMUM 2#12, 1#12ISOL, 1#12GND IN 3/4".
 - ⑨ CIRCUIT TO BE A MINIMUM 2#10, 1#10ISOL, 1#10GND IN 3/4".
 - ⑩ CIRCUIT TO BE A MINIMUM 2#10, 1#10GND IN 3/4".
 - ⑪ CIRCUIT TO BE A MINIMUM 2#8, 1#10GND IN 3/4".
 - ⑫ CIRCUIT TO BE A MINIMUM 3#10, 1#10GND IN 3/4".
 - ⑬ CIRCUIT TO BE A MINIMUM 3#4, 1#8GND IN 1-1/4".
 - ⑭ EC TO FURNISH/INSTALL SURFACE MOUNTED J-BOX ABOVE DOOR TO ACCOMMODATE CARD ACCESS DOOR POWER SUPPLY, CONTROL WIRING, AND DOOR LOCK MECHANISM WIRING. COORDINATE WITH GC/SECURITY CONTRACTOR FOR EXACT MOUNTING LOCATION, SIZE OF J-BOX AND SPECIFIC SYSTEM REQUIREMENTS.
 - ⑮ EC TO FURNISH/INSTALL J-BOX AND 3/4" ACCESSIBLE LOCATION ABOVE SECURE SIDE OF DOOR FOR SECURITY KEYPAD/CARD READER. COORDINATE WITH SECURITY CONTRACTOR FOR MOUNTING REQUIREMENTS OF J-BOX. SECURITY CONTRACTOR TO INSTALL DEVICE(S) AND CABLING.



No Part Of These Documents May Be Reproduced, Stored In a Retrieval System, OR Transmitted In Any Form Or By Any Means, Electronic, Mechanical, Photocopying, Recording, Or Otherwise, Without The Prior Written Permission Of: ReliantSouth Construction Group.



1 ELECTRICAL NEW WORK POWER PLAN AREA C & D
 E2.2 SCALE: 1/8" = 1'-0"



2 ELECTRICAL NEW WORK POWER PLAN AREA E
 E2.2 SCALE: 1/8" = 1'-0"

KEYNOTES

- ① EXISTING CIRCUIT CONTINUES INTO ADJACENT SPACE.
- ② MAINTAIN CONNECTION WITH EXISTING HOMERUN TO PANEL 'C-1'.
- ③ PRIOR TO ROUGH-IN, EC TO COORDINATE WITH GC/ARCHITECT FOR EXACT HEIGHT AND LOCATION OF DEVICES TO SERVE WALL MOUNTED FLAT PANEL SCREEN.
- ④ EC TO INSTALL DISCONNECT DIRECTLY TO MECHANICAL UNIT. EC SHALL COORDINATE WITH MECHANICAL CONTRACTOR/EQUIPMENT MANUFACTURER TO ENSURE THAT EQUIPMENT WARRANTY IS MAINTAINED.
- ⑤ EC TO CONNECT TO NEAREST NON-SWITCHED 120V CIRCUIT.



Design - Build Contractor

230 West 5th Street
 Panama City, FL 32401
 (850) 215-5540

**LYNN HAVEN
 METHODIST CHURCH**
 3203 MINNESOTA AVENUE
 LYNN HAVEN, FL 32444

| REVISION | | |
|----------|-------------|------|
| # | DESCRIPTION | DATE |
| | | |
| | | |
| | | |
| | | |

Designed By:
A. DAVIS

Drawn BY:
C. DANIELS

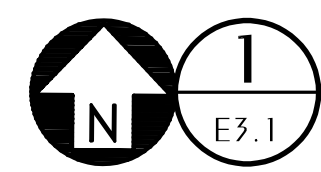
ELECTRICAL NEW
 WORK POWER PLAN
 AREA C, D, & E

E2.2

03/10/2025 10:00:00 AM



No Part Of These Documents May Be Reproduced, Stored In a Retrieval System, OR Transmitted In Any Form Or By Any Means, Electronic, Mechanical, Photocopying, Recording, Or Otherwise, Without The Prior Written Permission Of: ReliantSouth Construction Group.



ELECTRICAL NEW WORK LIGHTING PLAN AREA A & B

SCALE: 1/8" = 1'-0"

KEYNOTES

- 1 NIGHT LIGHT FIXTURE TO BE WIRED FOR 24 HOUR CONTINUOUS OPERATION.
- 2 EC TO CONNECT TO EXISTING LIGHTING CIRCUIT IN THIS AREA AHEAD OF LOCAL SWITCH.
- 3 TO REDUCE VOLTAGE DROP AND COMPLY WITH NEC 210.19, ENTIRE CIRCUIT TO BE A MINIMUM OF #10CU.
- 4 SEE 'ELECTRICAL LEGEND', SHEET 'E0.1', FOR REQUIRED 0-10V, 2-WIRE DIMMING CIRCUIT.
- 5 PRIOR TO ROUGH-IN, EC TO FIELD-COORDINATE WITH GC/OWNER FOR EXACT MOUNTING LOCATION OF DIMMING SWITCH(ES).
- 6 EC TO CONNECT TO EXISTING EXTERIOR LIGHTING CIRCUIT, EC TO ENSURE SWITCHED LEG AND ADDITIONAL NON-SWITCHED HOTLEG IS PULLED FOR CONTINUAL CHARGING OF EMERGENCY DRIVER FOR EGRESS LIGHTING COMPLIANCE.
- 7 PER MECHANICAL DESIGN, EXHAUST FAN TO BE PROVIDED WITH INTEGRAL DISCONNECT AND TO BE INTERLOCKED WITH 'PHUP-1'. EC TO COORDINATE WITH MECHANICAL CONTRACTOR TO ENSURE DEVICES ARE CONNECTED TO PROVIDE SIMULTANEOUS OPERATION.
- 8 PER MECHANICAL DESIGN, EXHAUST FAN TO BE PROVIDED WITH INTEGRAL DISCONNECT AND TO BE INTERLOCKED WITH LIGHTING FIXTURE(S) SERVING AREA. EC TO COORDINATE WITH MECHANICAL CONTRACTOR TO ENSURE DEVICES ARE CONNECTED TO PROVIDE SIMULTANEOUS OPERATION.

EXISTING HPS 70 KVA, DRY-TYPE, 480A-208Y/120V, 3Ø, 4W, PAD-MOUNTED, STEP-DOWN TRANSFORMER 'T3' TO REMAIN

EXISTING HPS 9 KVA, DRY-TYPE, 480A-208Y/120V, 3Ø, 4W, WALL-MOUNTED, STEP-DOWN TRANSFORMER 'T4' TO REMAIN

EXISTING EATON DRY-TYPE, 480A-208Y/120V, 3Ø, 4W, WALL-MOUNTED ABOVE PANELS, STEP-DOWN TRANSFORMER 'T1' TO REMAIN

EXISTING SIEMENS DRY-TYPE, 480A-208Y/120V, 3Ø, 4W, WALL-MOUNTED ABOVE PANELS, STEP-DOWN TRANSFORMER 'T1' TO REMAIN

EXISTING PANEL 'AV LIGHTING' TO REMAIN

EXISTING PANEL 'AV' TO REMAIN

EXISTING PANEL 'LIGHTING' TO REMAIN

EXISTING PANEL 'MDP' TO REMAIN

EXISTING PANEL 'B/1' TO REMAIN

EXISTING PANEL 'B/2' TO REMAIN

EXISTING CBB TO REMAIN



Design - Build Contractor

230 West 5th Street
Panama City, FL 32401
(850) 215-5540

**LYNN HAVEN
METHODIST CHURCH**

3203 MINNESOTA AVENUE
LYNN HAVEN, FL 32444

| REVISION | | |
|----------|-------------|------|
| # | DESCRIPTION | DATE |
| | | |
| | | |
| | | |

Designed By:
A.DAVIS

Drawn By:
C.DANIELS

**ELECTRICAL NEW
WORK LIGHTING
PLAN AREA A & B**

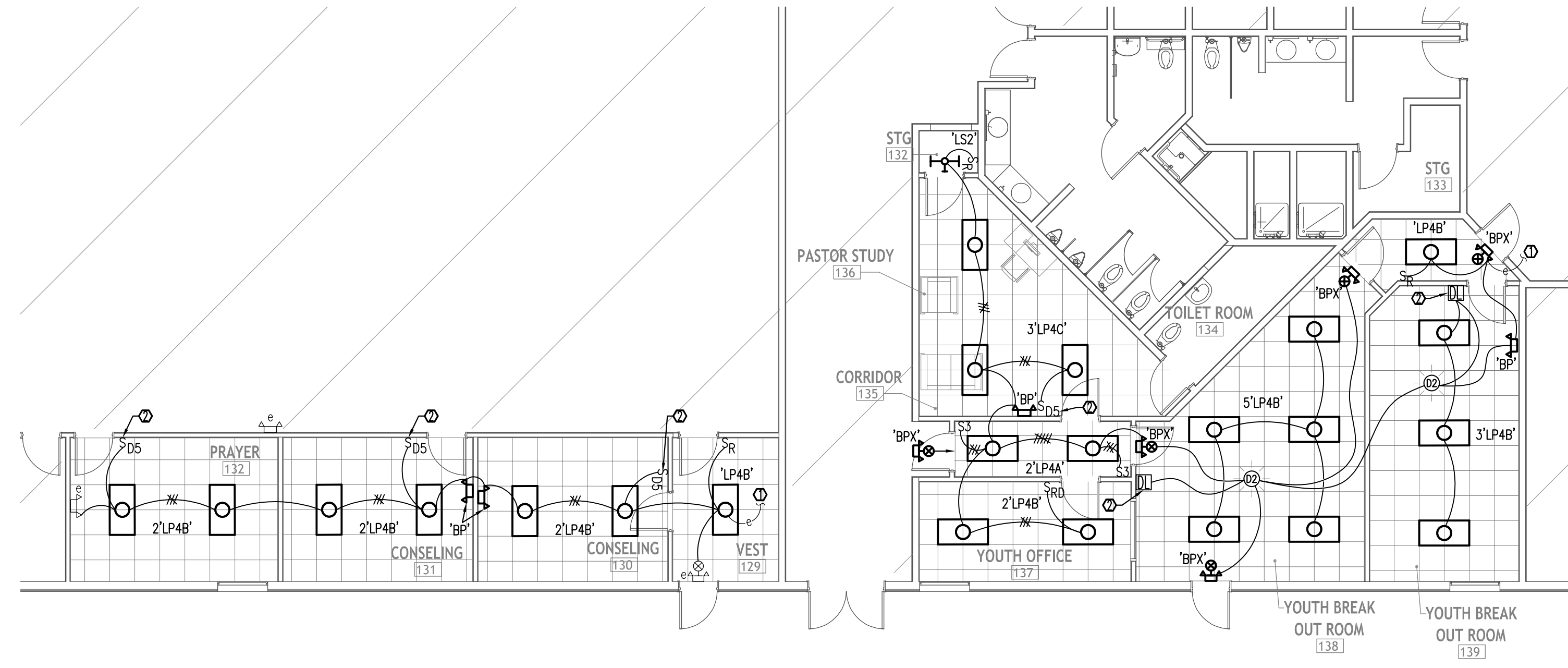
E3.1

03/10/2025 10:00:00 AM

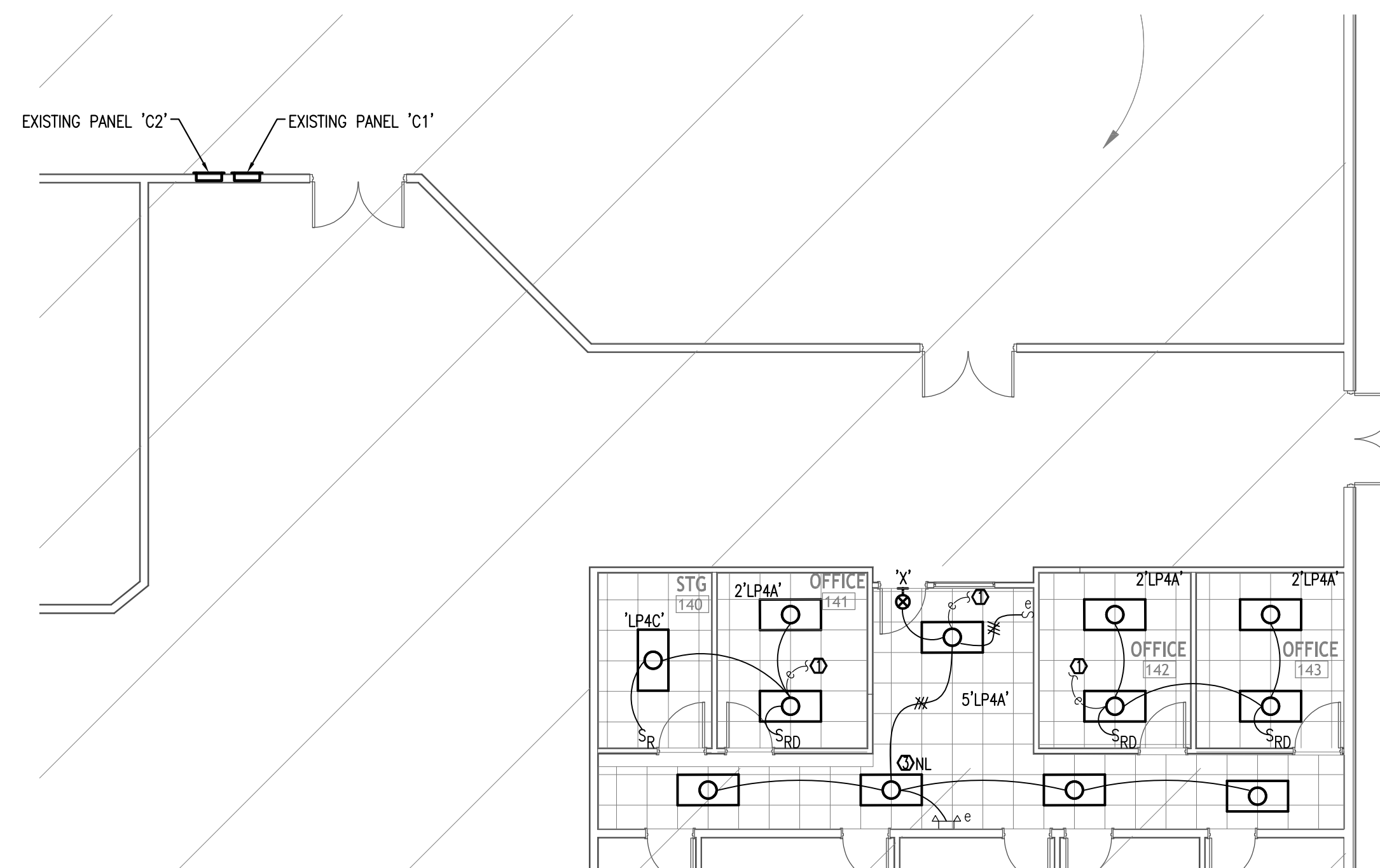


Florida CA Number: 27825
Anthony L Davis, PE
Florida License Number: 57419
850.626.9447
Project Number: 2024-085

No Part Of These Documents May Be Reproduced, Stored In a Retrieval System, OR Transmitted In Any Form Or By Any Means, Electronic, Mechanical, Photocopying, Recording, Or Otherwise, Without The Prior Written Permission Of: ReliantSouth Construction Group.



1 ELECTRICAL NEW WORK LIGHTING PLAN AREA C & D
 SCALE: 1/8" = 1'-0"



2 ELECTRICAL NEW WORK LIGHTING PLAN AREA E
 SCALE: 1/8" = 1'-0"

- KEYNOTES**
- ① EC TO CONNECT TO PREVIOUS LIGHTING CIRCUIT SERVING SAME AREA AHEAD OF LOCAL SWITCH.
 - ② SEE 'ELECTRICAL LEGEND', SHEET 'E0.1', FOR REQUIRED 0-10V, 2-WIRE DIMMING CIRCUIT.
 - ③ NIGHT LIGHT FIXTURE TO BE WIRED FOR 24 HOUR CONTINUOUS OPERATION.



Design - Build Contractor

230 West 5th Street
 Panama City, FL 32401
 (850) 215-5540

**LYNN HAVEN
 METHODIST CHURCH**
 3203 MINNESOTA AVENUE
 LYNN HAVEN, FL 32444

| REVISION | | |
|----------|-------------|------|
| # | DESCRIPTION | DATE |
| | | |
| | | |
| | | |
| | | |

Designed By:
A.DAVIS

Drawn BY:
C.DANIELS

**ELECTRICAL NEW
 WORK LIGHTING
 PLAN AREA C,D,& E**

E3.2

03/10/2025 10:00:00 AM



No Part Of These Documents May Be Reproduced, Stored In a Retrieval System, OR Transmitted In Any Form Or By Any Means, Electronic, Mechanical, Photocopying, Recording, Or Otherwise, Without The Prior Written Permission Of: ReliantSouth Construction Group.



- EXISTING HPS 70 KVA, DRY-TYPE, 480A-208Y/120V, 3Ø, 4W, PAD-MOUNTED, STEP-DOWN TRANSFORMER 'T3' TO REMAIN
- EXISTING HPS 9 KVA, DRY-TYPE, 480A-208Y/120V, 3Ø, 4W, WALL-MOUNTED, STEP-DOWN TRANSFORMER 'T4' TO REMAIN
- EXISTING EATON DRY-TYPE, 480A-208Y/120V, 3Ø, 4W, WALL-MOUNTED ABOVE PANELS, STEP-DOWN TRANSFORMER 'T1' TO REMAIN
- EXISTING SIEMENS DRY-TYPE, 480A-208Y/120V, 3Ø, 4W, WALL-MOUNTED ABOVE PANELS, STEP-DOWN TRANSFORMER 'T1' TO REMAIN
- EXISTING PANEL 'AV LIGHTING' TO REMAIN
- EXISTING PANEL 'AV' TO REMAIN
- EXISTING PANEL 'A' TO REMAIN
- EXISTING PANEL 'LIGHTING' TO REMAIN
- EXISTING PANEL 'MDP' TO REMAIN
- EXISTING PANEL 'B/1' TO REMAIN
- EXISTING PANEL 'B/2' TO REMAIN
- EXISTING CBB TO REMAIN

1 NEW WORK FIRE ALARM PLAN A & B
 E4.1 SCALE: 1/8" = 1'-0"

- KEYNOTES**
- 1 RELAY FOR INTERLOCK WITH AV TO SHUT DOWN AV DURING FIRE ALARM ACTIVATION. FIELD-COORDINATE WITH GC/OWNER FOR EXACT LOCATION.
 - 2 PER MECHANICAL DESIGN, UNIT TO BE FURNISHED WITH DUCT SMOKE DETECTOR IN BOTH SUPPLY AND RETURN. PROVIDE RELAY FOR CONNECTION TO FIRE ALARM SYSTEM. DETECTOR TO BE POWERED VIA UNIT; NO SEPARATE 120V POWER REQUIRED.



Design - Build Contractor

230 West 5th Street
 Panama City, FL 32401
 (850) 215-5540

**LYNN HAVEN
 METHODIST CHURCH**
 3203 MINNESOTA AVENUE
 LYNN HAVEN, FL 32444

| REVISION | | |
|----------|-------------|------|
| # | DESCRIPTION | DATE |
| | | |
| | | |
| | | |
| | | |

Designed By:
A.DAVIS
 Drawn BY:
C.DANIELS

**NEW WORK FIRE
 ALARM PLAN AREA
 A & B**

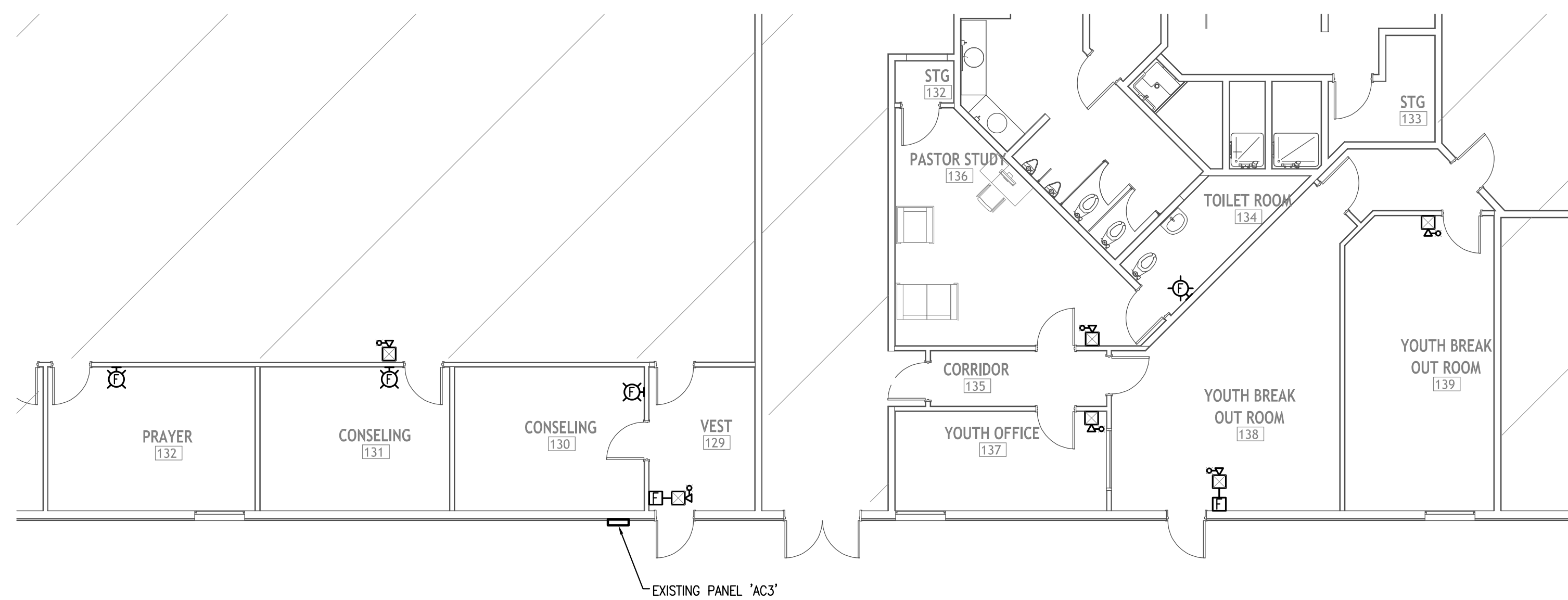
E4.1

03/10/2025 10:00:00 AM

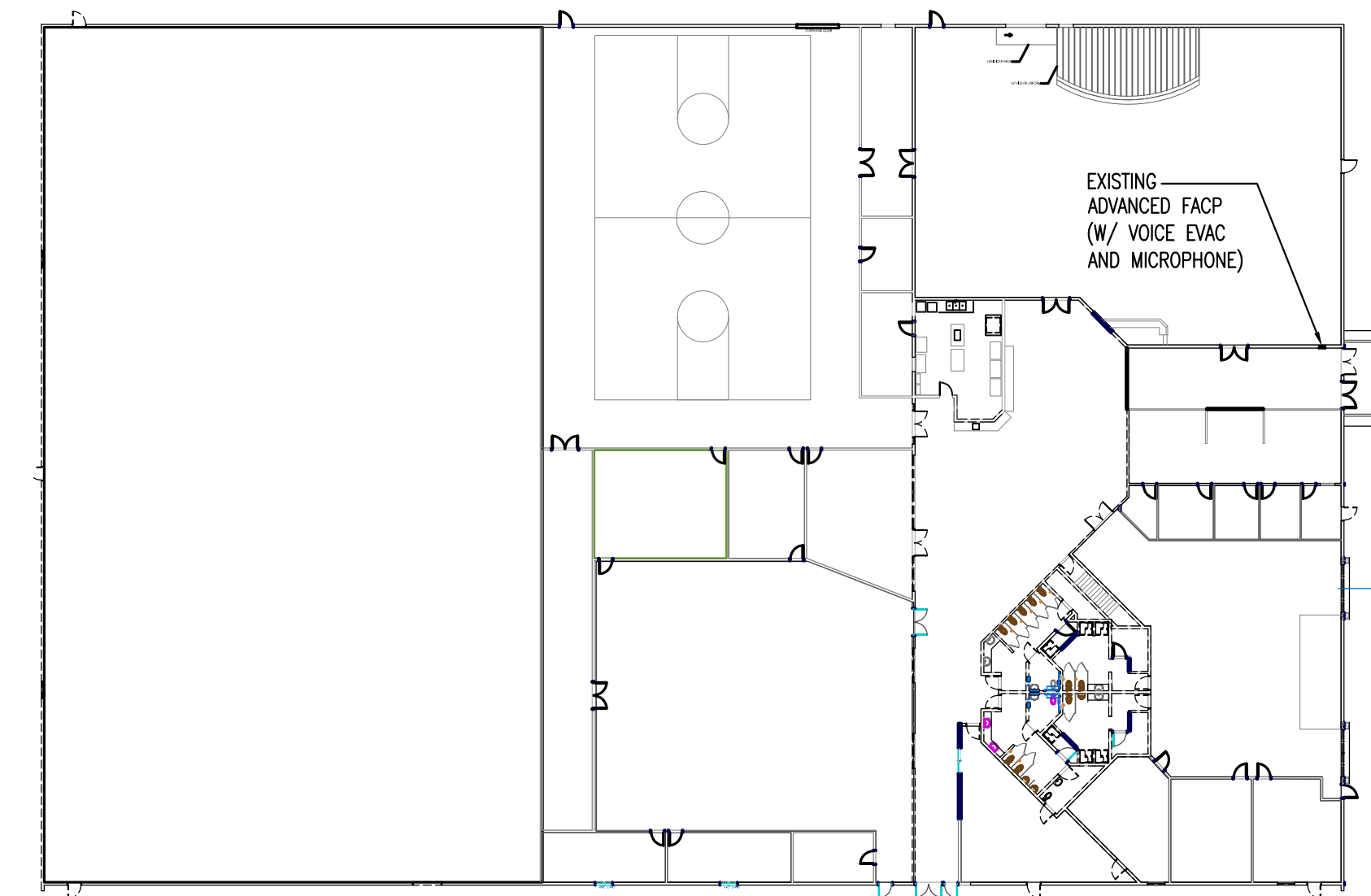
**WATFORD
 ENGINEERING**
 4452 Clinton Street Marianna, Florida 32446
 2449 Moores Mill Road, Suite 100, Auburn, AL 36830

Florida CA Number: 27925
 Anthony L Davis, PE
 Florida License Number: 57419
 850.525.9447
 Project Number: 2024-085

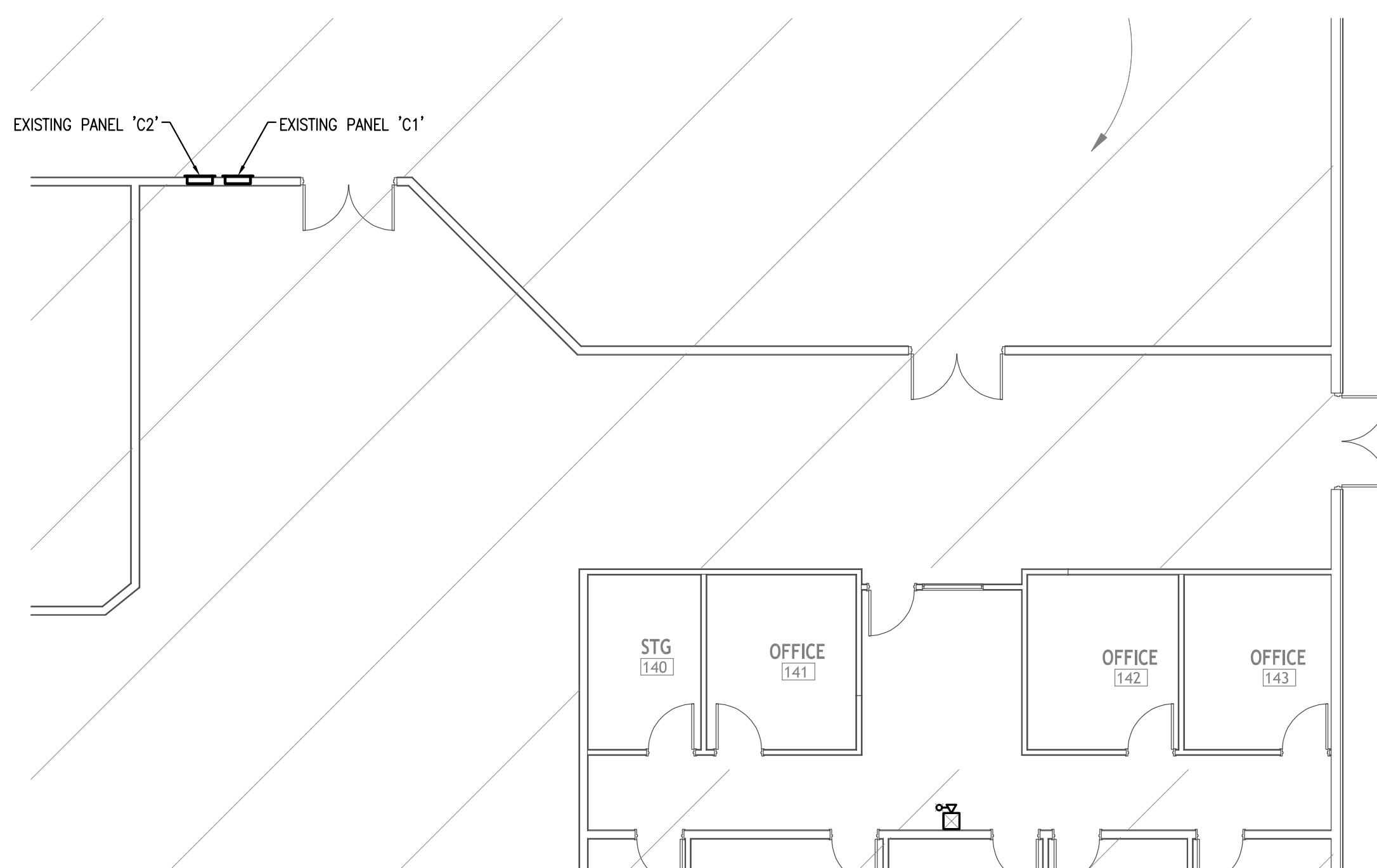
No Part Of These Documents May Be Reproduced, Stored In a Retrieval System, OR Transmitted In Any Form Or By Any Means, Electronic, Mechanical, Photocopying, Recording, Or Otherwise, Without The Prior Written Permission Of: ReliantSouth Construction Group.



1 NEW WORK FIRE ALARM PLAN AREA C & D
 E4.2 SCALE: 1/8" = 1'-0"



3 EXISTING OVERALL PLAN
 E4.2 SCALE: N.T.S.



2 NEW WORK FIRE ALARM PLAN AREA E
 E4.2 SCALE: 1/8" = 1'-0"



Design - Build Contractor

230 West 5th Street
 Panama City, FL 32401
 (850) 215-5540

**LYNN HAVEN
 METHODIST CHURCH**
 3203 MINNESOTA AVENUE
 LYNN HAVEN, FL 32444

| REVISION | | |
|----------|-------------|------|
| # | DESCRIPTION | DATE |
| | | |
| | | |
| | | |
| | | |

Designed By:
A. DAVIS
 Drawn BY:
C. DANIELS

**NEW WORK FIRE
 ALARM PLAN
 AREA C, D, & E**

E4.2

03/10/2025 10:00:00 AM



No Part Of These Documents May Be Reproduced, Stored In a Retrieval System, OR Transmitted In Any Form Or By Any Means, Electronic, Mechanical, Photocopying, Recording, Or Otherwise, Without The Prior Written Permission Of: ReliantSouth Construction Group.