

LEGEND

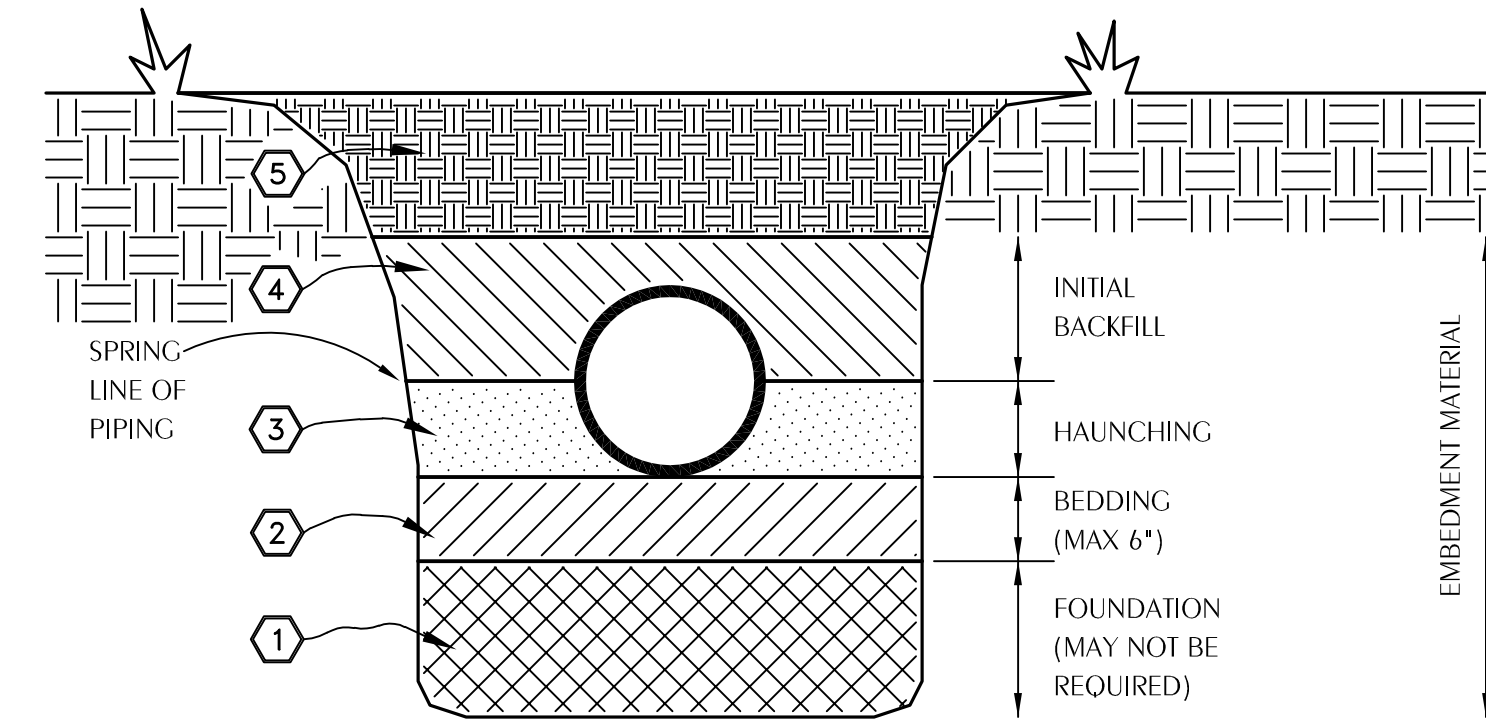
Table listing plumbing symbols and their corresponding abbreviations: S or W (SOIL OR WASTE PIPING), V (VENT PIPING), CW (COLD WATER SUPPLY PIPING), HW (HOT WATER SUPPLY PIPING), HWR (HOT WATER RETURN PIPING), CV (GATE VALVE), CV (CHECK VALVE), BV (BALL VALVE), HB (HOSE BIBB), WH (WALL HYDRANT), CO (CLEANOUT TO FLOOR), FD (FLOOR DRAIN), COIS (CLEANOUT TO GRADE), UNION, VTR (VENT THRU ROOF), SHEET NOTE, POINT OF CONNECTION TO EXISTING, SOLENOID VALVE.

Table listing plumbing abbreviations and their corresponding full names: MR (MOP RECEPTOR), WC (WATER CLOSET), TP (TRAP PRIMER), EWH (ELECTRIC WATER HEATER), WHA (WATER HAMMER ARRESTOR TYPE A), WHB (WATER HAMMER ARRESTOR TYPE B), WHC (WATER HAMMER ARRESTOR TYPE C), L (LAVATORY), UR (URINAL), KW (KILOWATT), TVC (TEMPERATURE CONTROL VALVE), MS (MASTER SHUT OFF VALVE), S (SWITCH), WV (WET VENT), CP (CIRCULATOR PUMP), HD (2" HUB DRAIN WITH FLEXIBLE TRAP SEAL BY MIFAB OR EQUAL ABOVE CEILING UNLESS NOTED), MV (MIXING VALVE), EWC (ELECTRIC WATER COOLER), UB (UTILITY BOX), SH (SHOWER), SK (SINK).

GENERAL NOTES

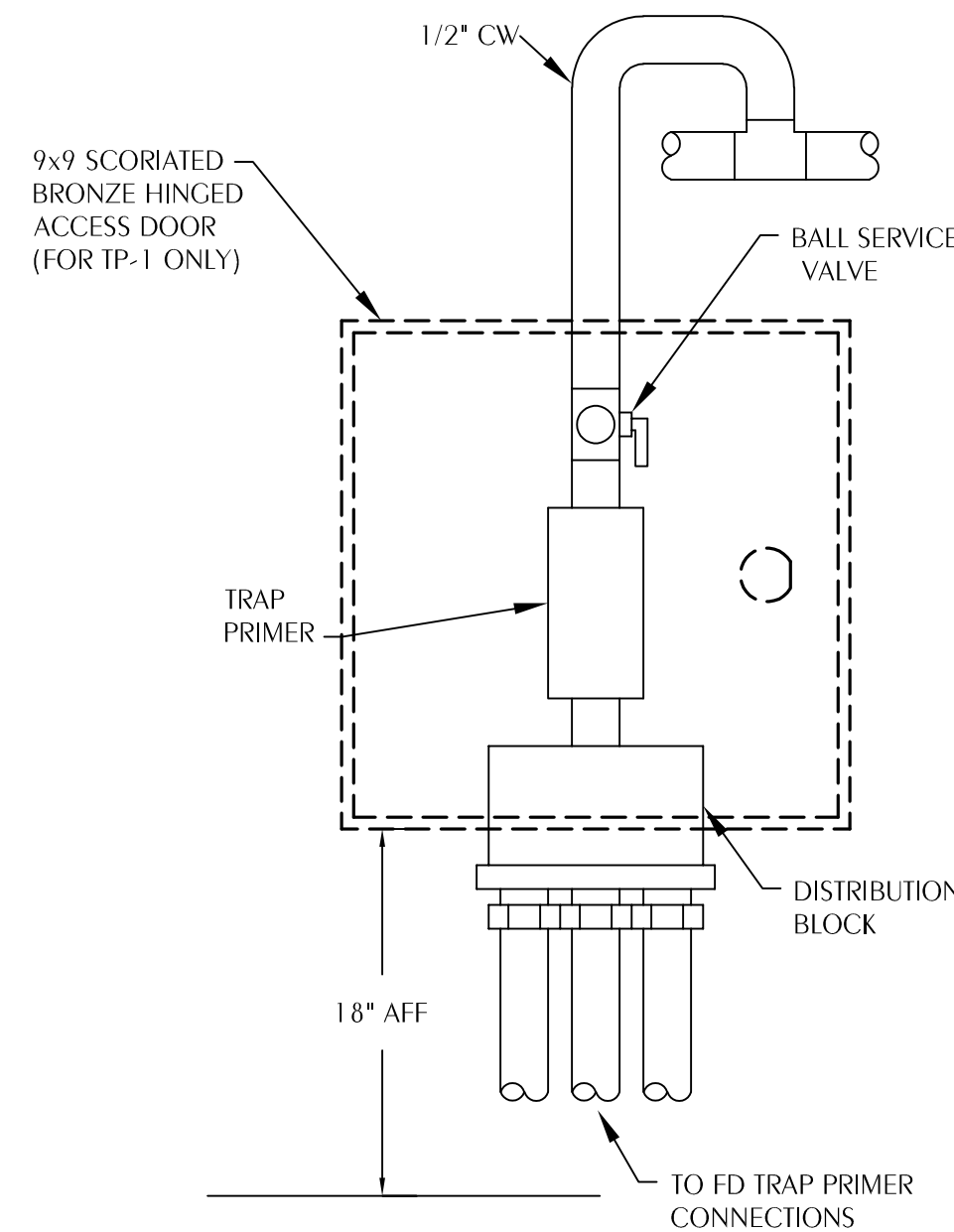
- 1. COORDINATE ALL PIPING WITH DUCTWORK SHOP DRAWINGS AND EXISTING CONDITIONS. ROUTE PIPING AS REQUIRED TO AVOID CONFLICTS.
2. PRIOR TO START OF ANY WORK, COORDINATE SANITARY SEWER AND POTABLE WATER PIPING WITH CIVIL DRAWINGS.
3. FIELD VERIFY PIPE INVERTS PRIOR TO LAYING OUT SANITARY SEWER PIPING.
4. ALL PIPING PASSING THROUGH ANY WALL SHALL HAVE A SLEEVE PER SPECIFICATIONS.
5. ALL PIPING PASSING THROUGH FIRE-RATED WALLS SHALL HAVE A FIRE-RATED SLEEVE PER SPECIFICATIONS. ALL PIPING PENETRATIONS THROUGH WALLS OR FLOORS SHALL BE SEALED TO EQUAL THE RATING OF THE WALLS OR FLOORS.
6. ALL PIPING INDICATED IS ABOVE THE CEILING EXCEPT THE OBVIOUS SANITARY SOIL, WASTE, VENT AND POTABLE WATER PIPING BELOW FLOOR OR GRADE.
7. SEE TOILET ROOM ELEVATIONS ON ARCHITECTURAL DRAWINGS FOR PLUMBING FIXTURE MOUNTING HEIGHT.
8. COORDINATE EXACT LOCATION OF ALL EXTERIOR WALL HYDRANTS WITH ARCHITECTURAL DRAWINGS.
9. UNDER SLAB SOIL, WASTE AND VENT PIPING PASSING TO UNDERSIDE OR THROUGH FOUNDATION FOOTING, WALL OR GRADE BEAM SHALL BE PROVIDED WITH A RELIEVING ARCH OR PIPE SLEEVE 2 (TWO) PIPE SIZES GREATER THAN PIPE SIZE INDICATED ON PLANS. COORDINATE FINAL PIPE ROUTING AND LAYOUT WITH STRUCTURAL DRAWINGS.
10. PRIOR TO SUBSTANTIAL COMPLETION OF NEW AND ALTERED WORK AREAS, CONTRACTOR SHALL HAVE SANITARY PLUMBING SYSTEM CLEARED OF DEBRIS OR ANY MATTER THAT WOULD INTERFERE OR PREVENT ADEQUATE CONVEYANCE OF MATERIALS FROM MOVING THROUGH AND TERMINATING INTO BUILDING OR PUBLIC DISPOSAL FACILITIES.
11. ALL (VTR'S) VENT THRU ROOF PENETRATIONS INDICATED ON PLANS ARE PRELIMINARY. FINAL LOCATIONS SHALL BE COORDINATED WITH ALL TRADES. ALL VTR'S SHALL BE A MINIMUM OF 10'-0" FROM ALL FRESH AIR INTAKE OPENINGS.
12. ALL TRAP PRIMERS AND DOMESTIC WATER ISOLATION VALVES SHALL BE ACCESSIBLE. TRAP PRIMERS LOCATED IN THE VICINITY OF WATER CLOSETS SHALL BE ACTIVATED BY WATER CLOSET USAGE. ISOLATION VALVES SHALL BE OF THE QUARTER TURN BALL OR GATE TYPE.
13. CONTRACTOR SHALL DEVELOP AND SUBMIT COORDINATION SHOP DRAWINGS WHICH IDENTIFY ROUTING OF PLUMBING PIPE AND LOCATION OF EQUIPMENT. SHOP DRAWINGS SHALL INDICATE COORDINATION WITH THE WORK OF OTHER TRADES.
14. ALL WORK SHALL COMPLY WITH THE FLORIDA BUILDING CODE 8TH EDITION (2023) PLUMBING.

- 1 A FOUNDATION MAY BE REQUIRED IN VERY POOR SOIL CONDITIONS.
2 BEDDING IS REQUIRED PRIMARILY TO BRING THE TRENCH BOTTOM UP TO GRADE. BEDDING MATERIALS SHALL PROVIDE A UNIFORM AND ADEQUATE LONGITUDINAL SUPPORT UNDER THE PIPE. IN DRY SOIL CONDITIONS, CLASS II OR III MATERIAL SHALL BE HAND PLACED IN 4-6", LIGHTLY COMPACTED UNIFORM AND NOT FINER THAN THE FOUNDATION MATERIAL. IN WET CONDITIONS, CLASS I, II OR III MATERIAL SHALL BE HAND PLACED IN 4-6", UNIFORM AND NOT FINER THAN THE FOUNDATION MATERIAL. WHEN UTILIZING CLASS I MATERIAL, SUFFICIENT AMOUNTS OF CLASS II OR III MATERIAL SHALL BE ADDED TO FILL ALL VOIDS CREATED BY THE USE OF CLASS I MATERIAL.
3 HAUNCHING MATERIAL SHALL BE HAND PLACED TO THE SPRINGLINE OF THE PIPE. CLASS II OR III MATERIAL SHALL BE CONSOLIDATED UNDER THE PIPE AND HAND TAMPED TO PROVIDE ADEQUATE SIDE SUPPORT.
4 INITIAL BACKFILL MATERIAL SHALL BE CLASS II OR III. IT SHALL BE PLACED WITHIN 24-50" ABOVE THE TOP OF THE PIPE AND TAMPED BY A PORTABLE VIBRATOR. FINAL BACKFILL MATERIAL MAY BE MACHINE PLACED. THE MATERIAL SHALL BE CLASS II OR III MATERIAL. CLASS IV MATERIAL MAY BE INSTALLED OUTSIDE OF ROADWAY.
5 FINAL BACKFILL UNDER ROADWAYS MAY REQUIRE SPECIAL COMPACTION AND DENSITY TESTS. A MINIMUM OF 30% OF COVER OVER THE TOP OF THE PIPE SHALL BE PROVIDED BEFORE THE TRENCH IS WHEEL- LOADED.
NOTE: ALL EMBEDMENT MATERIALS SHALL BE NO LESS THAN 95% OF MAXIMUM DENSITY. LABORATORY TESTING OF THE SOIL WILL BE REQUIRED. THIS PROCEDURE SHALL BE REQUIRED ON ALL INSTALLATIONS. ALL TRENCHING, EXCAVATION, AND BACKFILLING SHALL BE IN ACCORDANCE WITH 2023 FLORIDA PLUMBING CODE.

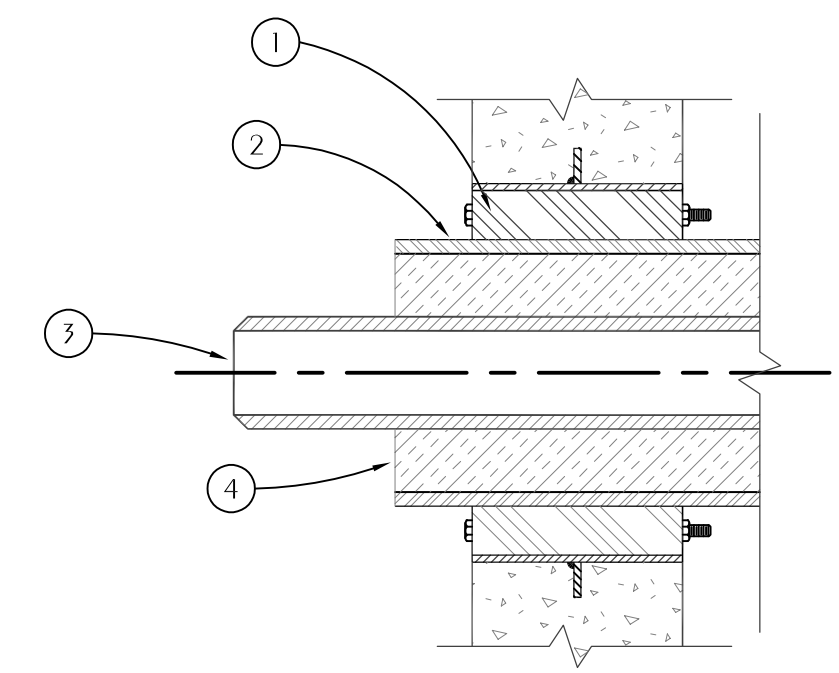


- CLASS I: ANGLULAR, 1/4"-1-1/2", GRADED STONE, INCLUDING A NUMBER OF FILL MATERIALS THAT HAVE REGIONAL SIGNIFICANCE SUCH AS CORAL, SLAC, CINDERS, CRUSHED STONE AND CRUSHED SHELLS.
CLASS II: COARSE SANDS AND GRAVELS WITH MAXIMUM PARTICLE SIZE OF 1-1/2" INCLUDING VARIOUS GRADED SANDS AND GRAVELS CONTAINING SMALL PERCENTAGES OF FINES, GENERALLY GRANULAR AND NON-COHESIVE, EITHER WET OR DRY. SOIL TYPES GW, GP, SW, AND SP ARE INCLUDED IN THIS CLASS.
CLASS III: FINE SAND AND CLAY GRAVELS, INCLUDING FINE SANDS, SAND-CLAY MIXTURES AND GRAVEL-CLAY MIXTURES. SOIL TYPES GM, GC, SM, AND SC ARE INCLUDED IN THIS CLASS.
CLASS IV: SILT, SILTY CLAYS, AND CLAYS, INCLUDING INORGANIC CLAYS AND SILT OF MEDIUM TO HIGH PLASTICITY AND LIQUID LIMITS. SOIL TYPES MH, ML, CH, AND CL ARE INCLUDED IN THIS CLASS. THESE MATERIALS ARE NOT TO BE USED FOR BEDDING, HAUNCHING, OR INITIAL BACKFILL.
CLASS V: THIS CLASS INCLUDES THE ORGANIC SOILS, AS WELL AS SOILS CONTAINING FROZEN EARTH, DEBRIS, ROCKS LARGER THAN 1-1/2" IN DIAMETER AND OTHER FOREIGN MATERIALS. THESE MATERIALS ARE NOT TO BE USED FOR BEDDING, HAUNCHING, OR INITIAL BACKFILL.

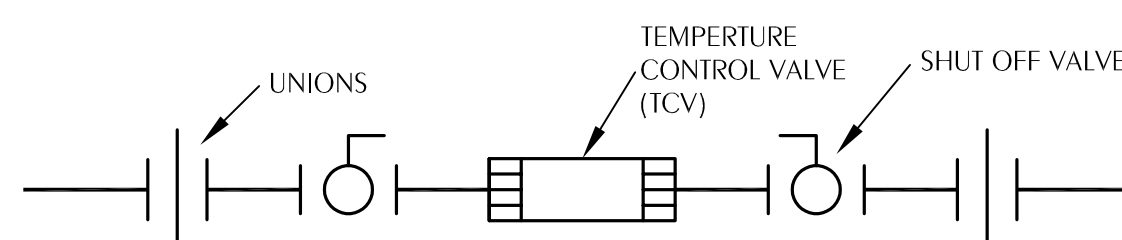
1 EXCAVATION AND BACKFILL DETAIL
SCALE: NONE



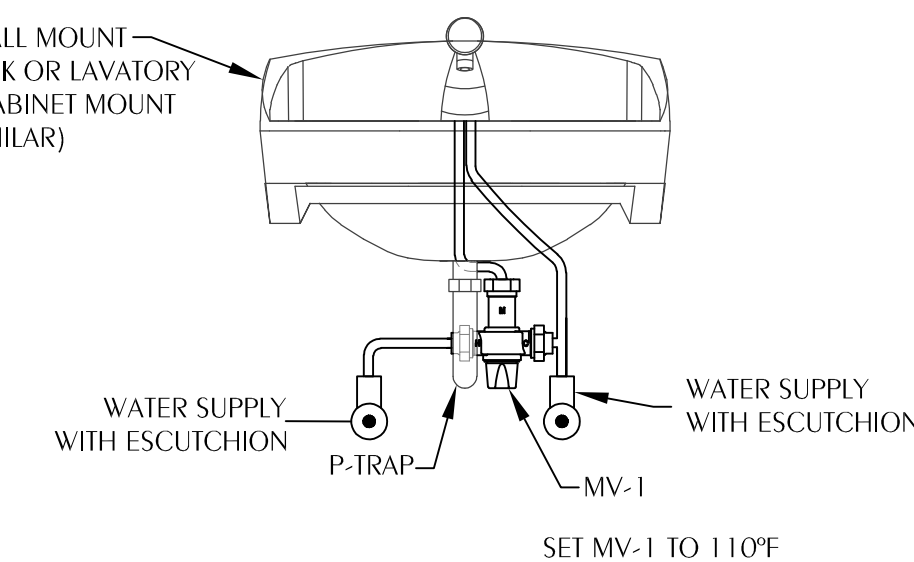
2 TRAP PRIMER DETAIL
SCALE: NONE



3 TYPICAL PIPE PENETRATION OF WALL
SCALE: NONE



4 THERMOSTATIC TEMPERATURE CONTROL VALVE DETAIL
SCALE: NONE



5 LAV/SINK MIXING VALVE DETAIL
SCALE: NONE
NOTE: MIXING VALVE WILL BE TYPICAL FOR L-1, L-2, SK-1

PLUMBING FIXTURE SCHEDULE table with columns: MARK, FIXTURE, PIPE SIZES-INCHES (CW, HW, W). Rows include: WC-1 WATER CLOSET (HANDICAP HEIGHT), WC-2 WATER CLOSET (STANDARD HEIGHT), UR-1 URINAL (HANDICAP HEIGHT), UR-2 URINAL (STANDARD HEIGHT), L-1 LAVATORY (HANDICAP HEIGHT), L-2 LAVATORY (STANDARD HEIGHT), SK-1 SINK, SH-1 SHOWER (HANDICAP), SH-2 SHOWER (STANDARD), EWC-1 ELECTRIC WATER COOLER (BI-LEVEL W/ BOTTLE FILL), FD FLOOR DRAIN, MV-1 WATER MIXING VALVE, EWH-1 ELECTRIC WATER HEATER, EWH-2 ELECTRIC WATER HEATER, CP-1 CIRCULATOR PUMP (INLINE), TCV-1 TEMPERATURE CONTROL VALVE, TP TRAP PRIMER, HB HOSE BIBB, UB-1 RECESSED UTILITY WALL BOX (ICE MAKER HOOK-UP), SP-1 ELEVATOR SUMP PUMP, MR-1 MOP RECEPTOR.

- 1. WATER SUPPLY TAPPING TO EACH PLUMBING FIXTURE SHALL BE FULL SIZE (MINIMUM).
2. SEE ELECTRICAL DWGS FOR FINAL POWER REQUIREMENTS.
3. PROVIDE WATER HAMMER ARRESTERS ON HOT & COLD WATER SUPPLY BRANCHES SERVING SINGULAR, MULTIPLE OR GROUPS OF PLUMBING FIXTURES. ADHERENCE TO THE PLUMBING AND DRAINAGE INSTITUTE STANDARD P.D.I.-WH201 (PER SPECIFICATIONS) SHALL BE EMPLOYED IN DETERMINING PROPER SIZE, SELECTION, PLACEMENT, LOCATION AND INSTALLATION OF ARRESTERS.

REVISIONS

Table with columns: NO., DESCRIPTION, DRAWN, CHECKED, DATE.

PHASE

Table with columns: PHASE, DRAWN, CHECKED, DATE. Rows include: SCHEMATIC DESIGN SUBMITTAL, DESIGN DEVELOPMENT, 70% CONSTRUCTION DOCUMENTS, CONSTRUCTION DOCUMENTS (Rev. 3/1/25).

JRA ARCHITECTS logo and contact information: 2551 BLAIRSTONE PINES DR TALLAHASSEE, FL 32301, PHONE: (850) 878-1891, Commission Number: 24849.

WATFORD ENGINEERING logo and address: 4402 Creston Street, Marietta, Florida 32446, Florida Certificate of Authorization: 27825, 850.526.3447, Project Number: 20240107, Keith A. Johnson, PE Florida License #6681.

PROJECT: HOWARD HALL RENOVATIONS FLORIDA A&M UNIVERSITY TALLAHASSEE, FLORIDA

SHEET TITLE: PLUMBING LEGEND, SCHEDULE, NOTES, AND DETAILS

SHEET NUMBER: PO.1

