

PLUMBING FIXTURE SCHEDULE

FIXTURE DESIGNATION	FIXTURE DESCRIPTION	A.D.A. COMPLIANT	MOUNTING METHOD	HEIGHT (A.F.F.)	ROUGH-IN PIPE SIZES				MANUFACTURER AND MODEL NUMBER	ACCESSORIES (SEE SCHEDULE)
					COLD WATER SUPPLY	HOT WATER SUPPLY	FIXTURE TRAP	FIXTURE DRAIN		
WC-1	FLUSH VALVE WATER CLOSET, HIGH EFFICIENCY (1.28 - 1.6 GPF), VITREOUS CHINA, SIPHON JET FLUSHING ACTION, ELONGATED RIM, 1-1/2" TOP SPUD, MIN. 2" BALLPASS TRAPWAY. COLOR: WHITE.	YES	FLOOR	RIM: 16-1/2"	1"	N/A	4"	4"	ZURN: Z5665-BWL1 OR APPROVED EQUAL	SEAT-OPN-FRT FV-1.6-AUTO-B
LV-1	LAVATORY, 20"x18", VITREOUS CHINA,3 FAUCET HOLES (ONE CENTERED, TWO 4" OFF CENTER), ANTI-SPLASH RIM AND HIGH BACK. COLOR: WHITE.	YES	WALL	RIM: 34"	1/2"	1/2"	1-1/4"	2"	KOHLER: K-2005 OR APPROVED EQUAL	FCT-LV-0.5-MAN-C DR-LV-C TR-LV TMV-LV-90
SK-2	SINGLE COMPARTMENT SINK, SELF-RIMMING, 22"x19-1/2", 18"x14"x10-1/8" DEEP BOWL, 18 GAUGE TYPE 304 STAINLESS STEEL, 4 FAUCET HOLES (ONE CENTERED, TWO 4" FROM CENTER, ONE 8" FROM CENTER), SOUND DEADENING COATING ON BOTTOM OF SINK.	YES	COUNTER TOP	SEE ARCH. PLANS	1/2"	1/2"	1-1/2"	2"	ELKAY: DLR221910-4 OR APPROVED EQUAL	FCT-SK-1.5-GEN-SPRAY DR-SK-STD TR-SK-STD
SH-7	60"x30" ACRYLIC SHOWER MODULE WITH SUBWAY TILE PATTERN, EQUIPED WITH GRAB BAR ON BACK WALL, GRAB BAR ON SIDE WALL, MOUNTED WITH STAINLESS STEEL BOLTS, 18 GAUGE WHITE CURTAIN ROD, INTEGRAL FRONT TRENCH DRAIN, FACTORY INSTALLED BASE AND 3/4" THRESHOLD. PROVIDE TYPE 304 STAINLESS STEEL 2" DRAIN.	YES	WALL	VALVE: 38" TO 48" (OPTIONAL)	1/2"	1/2"	2"	2"	COMFORT DESIGNS: XST6232TR OR APPROVED EQUAL	SH-FCT
MSB-2	MOP SERVICE SINK BASIN, 24"L x 24"W x 12"H, WITH 2" WIDE SHOULDERS, 1/4" PITCH TOWARD INSIDE. PRECAST TERRAZZO (MINIMUM 3,000 PSI @ 7 DAYS), SURFACE GROUND AND POLISHED WITH ALL HOLES AND PITS GROUTED AND WITH EXCESS REMOVED. COLOR: BLACK & WHITE MARBLE CHIPS IN GRAY PORTLAND CEMENT.	NO	FLOOR	---	1/2"	1/2"	3"	3"	FIAT: TSB-200 OR APPROVED EQUAL	FCT-MSB RMGD-MSB HOSE-MSB HGR-MSB
EWC-21	ELECTRIC WATER COOLER WITH BOTTLE FILLING STATION, FILTERED, BARRIER-FREE, TYPE 304 STAINLESS STEEL BASIN, BRUSHED FINISH, VANDAL-RESISTANT BUBBLER, STAINLESS STEEL CABINET AND APRON, LEAD-FREE WATERWAYS, SELF CONTAINED SYSTEM (R-134A REFRIGERANT) DELIVERS MIN. 8 GPH OF 50°F WATER @ 80°F. INLET WATER AND 90°F AMBIENT AIR, 120V / 1 PHASE.	YES	WALL SURFACE	SPOUT: 38" / 32"	1/2"	N/A	1-1/4"	2"	ELKAY: LZSTLG8WSSK OR APPROVED EQUAL	
	BOTTLE FILLING STATION: ELECTRONIC SENSOR ACTIVATED WITH AUTOMATIC 20-SECOND SHUT-OFF TIMER AND BOTTLE COUNTER. DELIVERS MIN. 1 GPM FLOW RATE WITH LAMINAR FLOW. ANTI-MICROBIAL PLASTIC COMPONENTS.									
IMB	ICE MAKER HOOK-UP BOX, 20 GAUGE STEEL, WHITE POWDER-COATED, ALL WELDED WATER TIGHT CONSTRUCTION, COLD WATER SUPPLY VALVE WITH 1/2" COPPER SWEAT INLET AND 1/4" COMPRESSION OUTLET AND WATER HAMMER ARRESTER.	N/A	WALL RECESSED	--	1/2"	N/A	N/A	N/A	GUY GRAY: MIB1HAAB OR APPROVED EQUAL	

- NOTES:
- 1

SUPPLY STOPS: CHROME-PLATED-BRASS, ONE-QUARTER TURN, BALL-TYPE OR COMPRESSION VALVE WITH INLET MATCHING SUPPLY PIPING.
- 2

FLEXIBLE CONNECTIONS: ASME A112.18.6 BRAIDED- OR CORRUGATED-STAINLESS STEEL, FLEXIBLE HOSE RISER.
- 3

SUPPORT CARRIERS: ASME A112.6.1M TYPE 1 (URINALS) OR TYPE 2 (CONCEALED ARM FOR LAVATORIES) WITH RECTANGULAR STEEL UPRIGHTS, COUPLING, SEAL, AND MOUNTING HARDWARE.
- 4

A.D.A. LAVATORIES & SINKS: PROTECT DRAIN AND SUPPLY LINES WITH "TRAP WRAP" OR APPROVED EQUAL.
- 5

EXTRA MAINTENANCE MATERIALS: FURNISH TWO (2) FLUSHOMETER-VALVE REPAIR KITS FOR EACH TYPE OF FLUSHOMETER VALVE INSTALLED.

CIRCULATOR PUMPS

DESIGNATION			C-1
	SERVICE		HW CIRCULATOR
	CAPACITY	GPM	4
	TOTAL DYNAMIC HEAD	FT.	27
	SHUT-OFF HEAD	FT.	35
	PUMP SEAL		MECHANICAL
	MOTOR SPEED	RPM	3,250
	MOTOR HORSEPOWER	HP	1/8
	MOTOR WINDING		FULL
	ELECTRICAL CHARACTERISTICS	V / PH	120 / 1
	NOTES		1
MANUFACTURER			TACO
MODEL NUMBER			009-SF5
DETAIL REFERENCE			APS.1
NOTES:			
1			PROVIDE TACO 00 TIMER/AQUASTAT WITH 7 DAY DIGITAL PROGRAMMABLE TIMER. SET TIMER FOR ALLOWABLE OPERATION DURING OCCUPIED HOURS AND AQUASTAT TO CYCLE PUMP.

GAS FIRED INSTANTANEOUS WATER HEATERS

DESIGNATION			WH-1
	FUEL TYPE		NATURAL GAS
	LOCATION		INDOOR
	INPUT CAPACITY	MBTUH	199
	OUTPUT CAPACITY	MBTUH	191
	EFFICIENCY	%	96
	ENTERING WATER TEMPERATURE	*F	70
	LEAVING WATER TEMPERATURE	*F	140
	WATER FLOW RATE	GPM	5.5
	ELECTRICAL CHARACTERISTICS	V / PH	120 / 1
	MANUFACTURER		RINNAI
MODEL NUMBER			CU-199IN
DETAIL REFERENCE			APS.1
NOTES:			
1			MINIMUM ACTIVATION FLOW = 0.40 GPM
2			MINIMUM FIRING RATE = 15 MBTUH

THERMOSTATIC MIXING VALVES

DESIGNATION			TMV-1
	APPLICATION		MED / LOW
	SET-POINT	*F	120
	MINIMUM FLOW	GPM	0.5
	MAXIMUM FLOW	GPM	10
	PRESSURE DROP @ MAX FLOW	PSI	10
	RECIRCULATED SYSTEM		YES
	ASSE COMPLIANCE		1017
MANUFACTURER			LAWLER
MODEL NUMBER			61-25
DETAIL REFERENCE			APS.1
NOTES:			
1			PROVIDE ROUGH BRASS FINISH

PLUMBING FIXTURE ACCESSORY SCHEDULE

ACCESSORY TAG	ACCESSORY DESCRIPTION	MANUFACTURER AND MODEL NUMBER
DR-LV-C	1-1/4" CHROME PLATED BRASS OFFSET DRAIN WITH TAIL PIECE. PROVIDE A PERFORATED FLAT CHROME BRASS STRAINER.	ELKAY: LKAD174 OR APPROVED EQUAL
DR-SK-STD	TYPE 304 STAINLESS STEEL DRAIN, REMOVEABLE CONICAL STRAINER BASKET, 1-1/2" STAINLESS STEEL OFFSET TAILPIECE.	ELKAY: LK35/LK53 OR APPROVED EQUAL
FCT-LV-0.5-MAN-C	SINGLE CONTROL DECK MOUNTED FAUCET, A.D.A. COMPLIANT, 4" CENTERSET, POLISHED CHROME PLATED BRASS, 0.5 GPM AERATOR SPRAY HEAD, 4" COVER PLATE.	CHICAGO FAUCET: 2200-4E2805ABCP OR APPROVED EQUAL
FCT-MSB	SERVICE SINK FAUCET, POLISHED CHROME PLATED BRASS, BUILT-IN STOPS, VACUUM BREAKER, LEVER HANDLES, WALL BRACE, 3/4" HOSE OUTLET.	T&S BRASS: B-0665-BSTP OR APPROVED EQUAL
FCT-SK-1.5-GEN-SPRAY	SINGLE LEVER DECK MOUNTED FAUCET, POLISHED CHROME PLATED BRASS, 9" SWING SPOUT, 1.5 GPM AT 80 PSI AERATOR, HOSE AND SPRAY, SOFT-CLOSING VALVE WITH INTEGRAL FLOW CONTROL AND ADJUSTABLE STOP TO RESTRICT EXTREME TEMPERATURES. PROVIDE COVER PLATE.	T&S BRASS: B-2730 OR APPROVED EQUAL
FV-1.6-AUTO-B	EXPOSED AUTOMATIC WATER CLOSET FLUSH VALVE, A.D.A. COMPLIANT, POLISHED CHROME PLATED, 1.6 GPF, BATTERY POWERED, SENSOR OPERATED, 1" SCREWDRIVER ANGLE STOP, VACUUM BREAKER, CAST WALL FLANGE.	ZURN: ZER6000-CP-WS1-YC OR APPROVED EQUAL
HGR-MSB	STAINLESS STEEL HANGER, WITH THREE RUBBER TOOL GRIPS.	FIAT: 889CC OR APPROVED EQUAL
HOSE-MSB	HEAVY DUTY, FLEXIBLE HOSE, 5/8" RUBBER, CLOTH REINFORCED, 3/4" BRASS COUPLING, TYPE 302 STAINLESS STEEL BRACKET WITH RUBBER GRIP.	FIAT: 832AA OR APPROVED EQUAL
RMGD-MSB	ALUMINUM RIM GUARD.	FIAT: 12398B OR APPROVED EQUAL
SEAT-OPN-FRT	EXTRA HEAVY DUTY, OPEN FRONT, ELONGATED SEAT, WITHOUT COVER, SOLID PLASTIC, SELF-SUSTAINING CHECK TYPE HINGE. HINGES SHALL MATCH SEAT COLOR. STAINLESS STEEL POSTS FITTED WITH STAINLESS STEEL WASHERS AND NUTS.	BEMIS: 1655SSCT OR APPROVED EQUAL
SH-FCT	SHOWER: SINGLE HANDLE PRESSURE BALANCED THERMOSTATIC MIXING VALVE WITH CERAMIC CARTRIDGE, INTEGRAL VOLUME CONTROL, ADJUSTABLE TEMPERATURE LIMIT STOP, TWO SERVICE STOPS/CHECK STOPS. TWO-WAY BRASS DIVERTER VALVE. SHOWER HEAD WITH INTEGRAL 1.5 GPM @ 80 PSI FLOW CONTROL, ADJUSTABLE PATTERN, ARM AND WALL FLANGE. HAND HELD SHOWER WITH 60" FLEXIBLE METAL HOSE. 24" MOUNTING SLIDE BAR WALL CONNECTION. ALL EXPOSED METALLIC TRIM IS POLISHED CHROME PLATED NICKEL.	JUST: JBSV-4623 OR APPROVED EQUAL
TMV-LV-90	EXPOSED ROUGH BRONZE, THERMOSTATIC MIXING VALVE, ADJUSTABLE LIMIT STOP, ASSE 1070, LISTED FOR POINT OF USE APPLICATION. SET OUTLET TEMPERATURE TO 90°F.	LAWLER: 570 OR APPROVED EQUAL
TR-LV	CAST BRASS ADJUSTABLE P-TRAP, TUBING OUTLET, 1-1/4" x 1-1/2", CLEANOUT PLUG, POLISHED CHROME PLATED FINISH.	ELKAY: LK500 OR APPROVED EQUAL
TR-SK-STD	CAST BRASS ADJUSTABLE P-TRAP, TUBING OUTLET, 1-1/2" x 1-1/2", CLEANOUT PLUG, POLISHED CHROME PLATED FINISH.	KOHLER: K-9000-CP OR APPROVED EQUAL

FIXTURE UNIT CALCULATIONS

FIXTURE TYPE		QUANTITY	WASTE		SUPPLY					
					COLD		HOT		TOTAL	
			UNIT	TOTAL	UNIT	TOTAL	UNIT	TOTAL	UNIT	TOTAL
	DRINKING FOUNTAIN	1	0.5	0.5	0.25	0.25			0.25	0.25
	LAVATORY	3	1	3	1.5	4.5	1.5	4.5	2	6
	SINK	1	2	2	2	2	2	2	3	3
	MOP SERVICE BASIN	1	2	2	2.25	2.25	2.25	2.25	3	3
	WATER CLOSET (FLUSH VALVE)	3	6	18	10	30			10	30
	SHOWER (PER HEAD)	2	2	4	3	6	3	6	4	8
	HOSE BIBB / WALL HYDRANT	4			4	16			4	16
	FLOOR DRAIN	5	2	10						
	FLOOR SINK	1	2	2						
	REFRIGERATOR ICE MAKER	1			1	1			1	1
TOTAL FIXTURE UNITS				41.5		62		14.75		67.25
DOMESTIC WATER DEMAND (GPM)						54.8		17.4		56.9

bki

ARCHITECTURE

BKJ, Inc., Architecture
1621 Physicians Dr.
Tallahassee, Florida 32308
(P) 850.778.8007 / (F) 850.546.8150
www.bkjarchitecture.com
FL Architecture Corporation AA26002280

SEAL:

PROJECT TITLE:

Electric & Gas Utility -
Backup Control Building
City of Tallahassee
6201 Capital Circle SE Tallahassee FL 32305

PROJECT NO.: 20.111

DESIGNED BY : JPT

DRAWN BY: JPT

CHECKED BY : MPP

THIS DRAWING AND ANY REPRODUCTIONS ARE THE PROPERTY AND COPYRIGHT OF BKJ, INC. AND MAY NOT BE REPRODUCED, PUBLISHED OR USED IN ANY MANNER WITHOUT WRITTEN PERMISSION OF THE ARCHITECT

REVISIONS :

PROJECT PHASE:

100% CONSTRUCTION DOCUMENTS

DRAWING TITLE :

Schedules

SHEET NO. :

P0.2

DATE:

08/26/2022

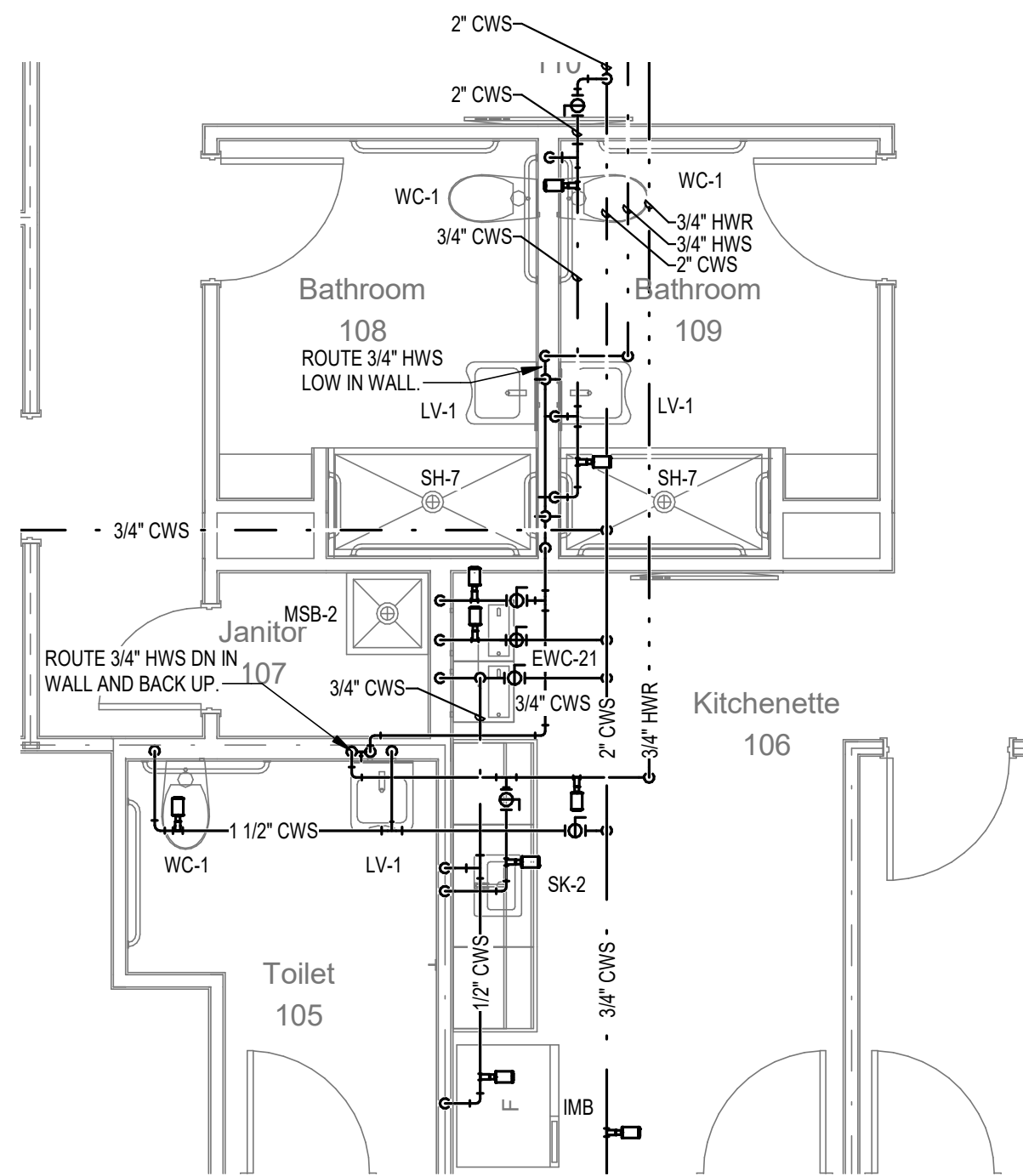
h2

ENGINEERING

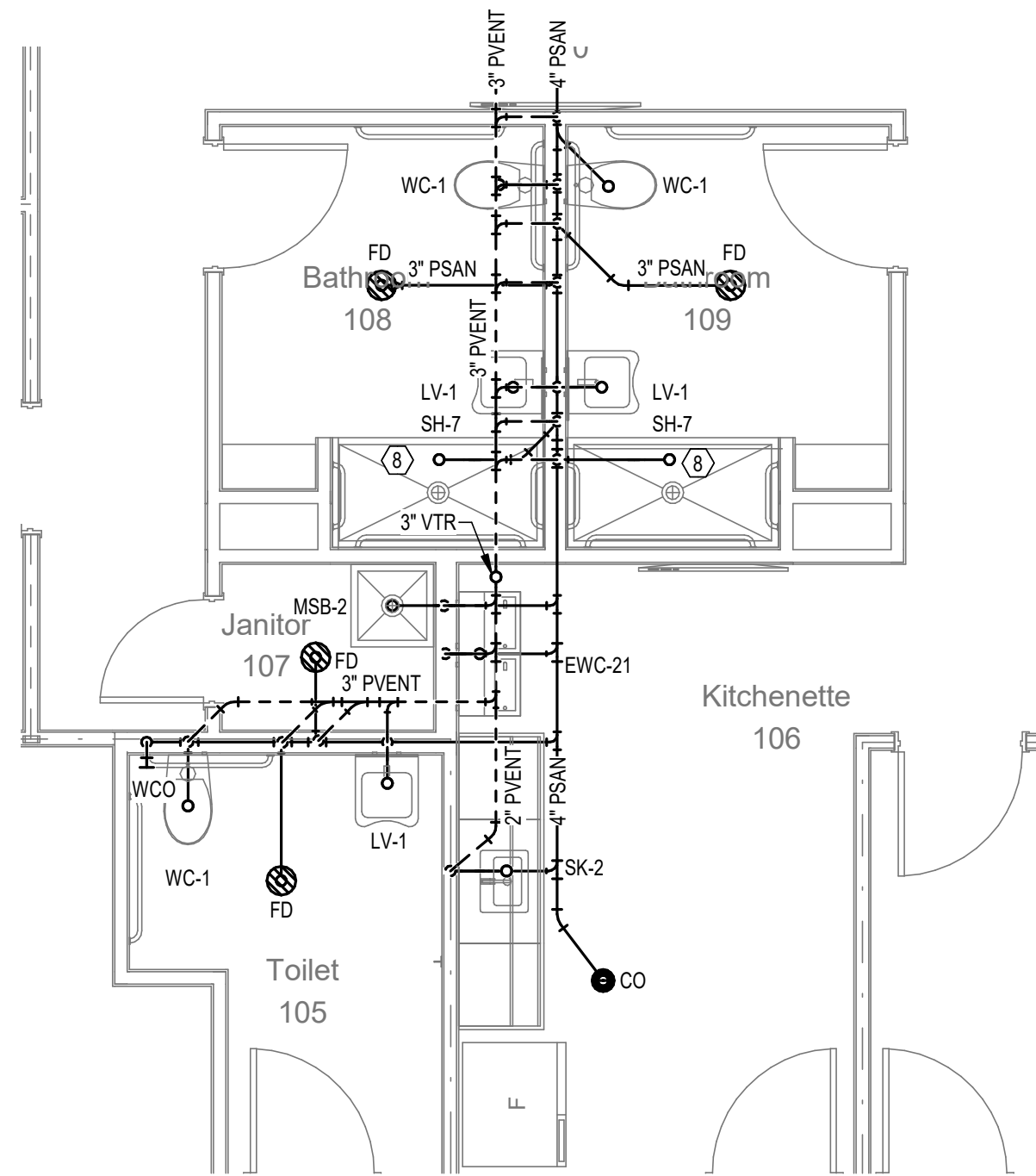
114 EAST 5th AVENUE TALLAHASSEE, FL
32303 PHONE 850.224.7622
www.h2engineering.com

HSE PROJECT No. 21128
THIS DOCUMENT IS THE PROPERTY OF h2Engineering AND IS PREPARED AS AN INSTRUMENT OF SERVICE. ITS USE, REUSE OR REPRODUCTION, EXCEPT BY WRITTEN AGREEMENT WITH h2Engineering, IS PROHIBITED.

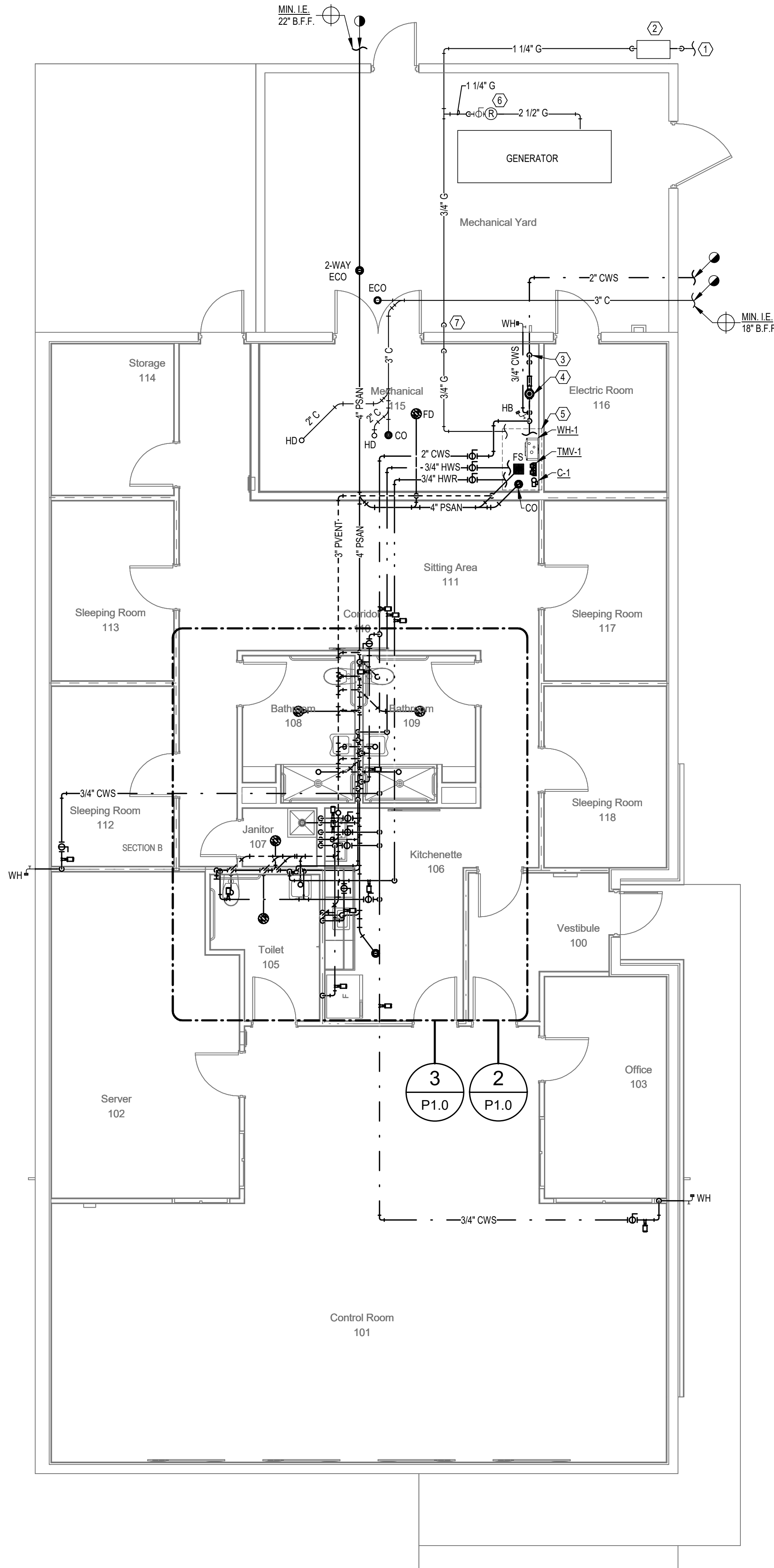
Florida Registry #2485
Mark P. Poindexter, P.E. #90615



2 Floor Plan - Supply
1/4" = 1'-0"



3 Floor Plan - Waste & Vent
1/4" = 1'-0"



1 Floor Plan
3/16" = 1'-0"

KEYNOTES

- METER, REGULATOR AND GAS PIPING UPSTREAM OF METER BY CITY OF TALLAHASSEE.
- 2000 MBH METER AND REGULATOR ASSEMBLY, OUTLET PRESSURE 2 PSI. COORDINATE WITH THE CITY OF TALLAHASSEE. SEE DETAIL D/P5.2.
- 2" WATER SERVICE ENTRANCE. SEE DETAIL C/P5.1.
- PRESSURE REDUCING STATION. SEE DETAIL C/P5.1.
- SEE DETAIL A/P5.1 FOR WATER HEATER, CIRCULATOR PUMP AND THERMOSTATIC MIXING VALVE PIPE CONNECTIONS.
- SEE DETAIL E/P5.2 FOR GENERATOR GAS PIPING INSTALLATION.
- GAS SERVICE ENTRANCE, SEE DETAIL D/P5.2.
- CONNECT 2" PSAN TO SHOWER TRENCH DRAIN.

SEAL:

PROJECT TITLE:

**Electric & Gas Utility -
Backup Control Building
City of Tallahassee**
6201 Capital Circle SE Tallahassee FL 32305

PROJECT NO.: 20.111

DESIGNED BY: JPT

DRAWN BY: JPT

CHECKED BY: MPP

THIS DRAWING AND ANY REPRODUCTIONS
ARE THE PROPERTY AND COPYRIGHT
OF BKJ, INC. AND MAY NOT BE
REPRODUCED, PUBLISHED OR USED IN ANY
MANNER WITHOUT WRITTEN
PERMISSION OF THE ARCHITECT

REVISIONS:

PROJECT PHASE:

100% CONSTRUCTION
DOCUMENTS

DRAWING TITLE:

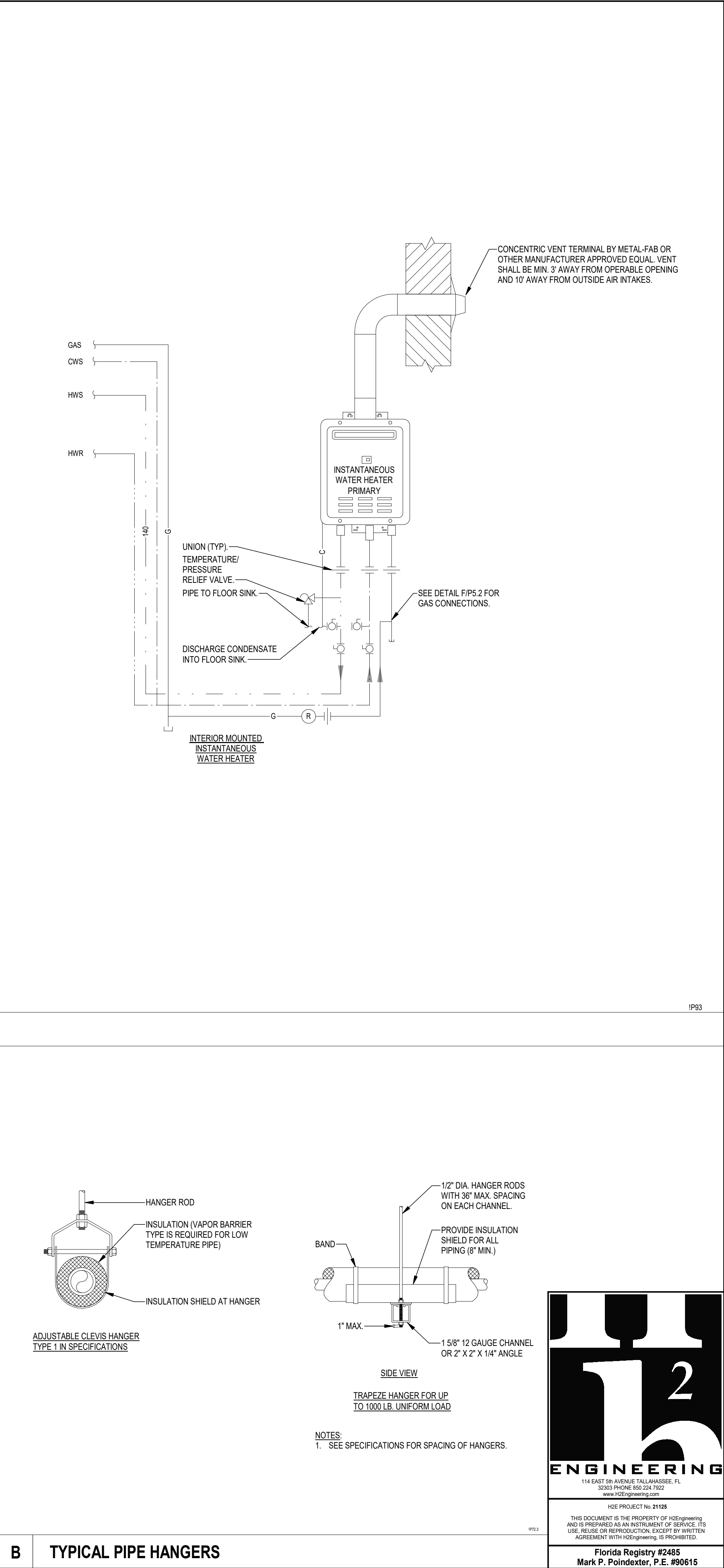
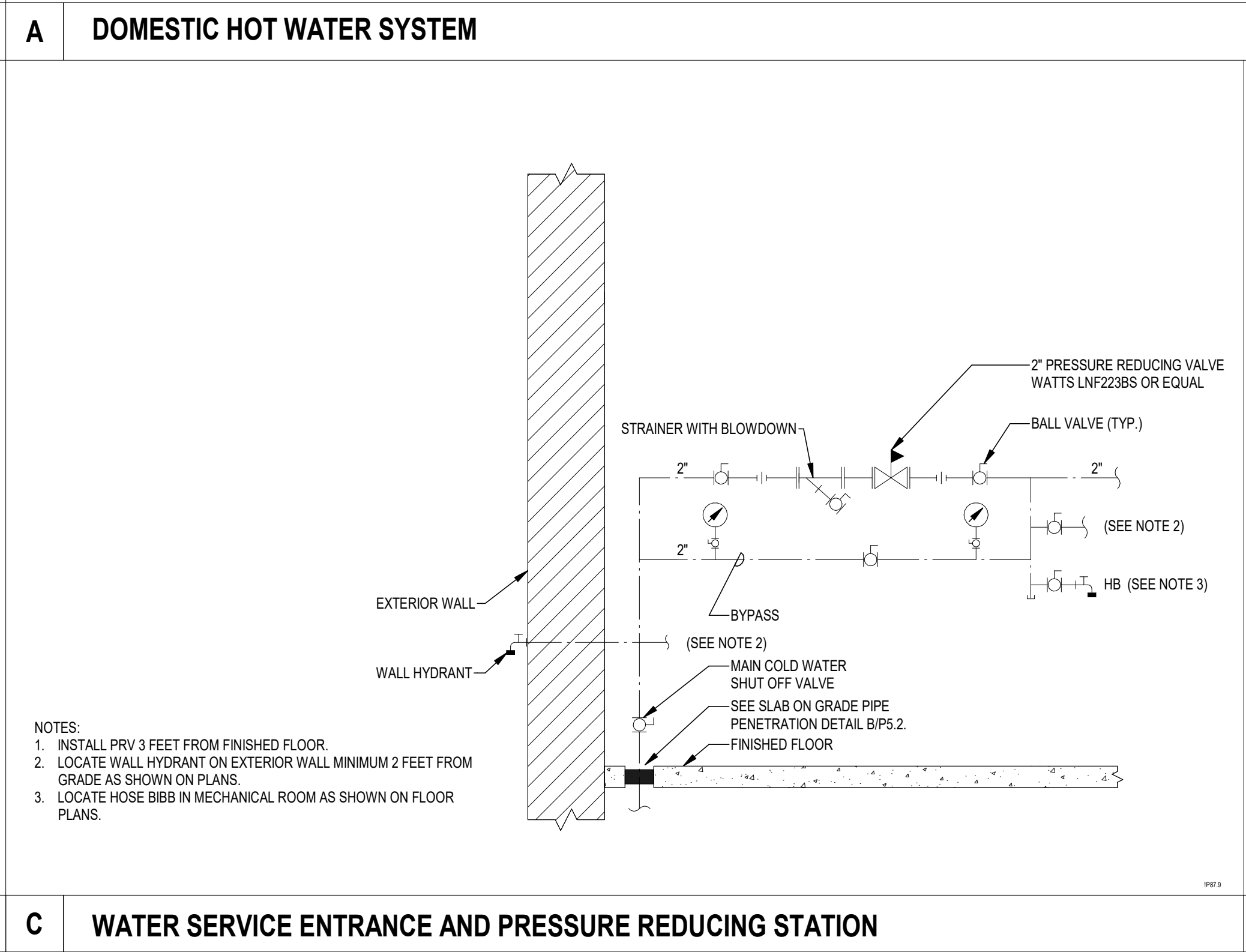
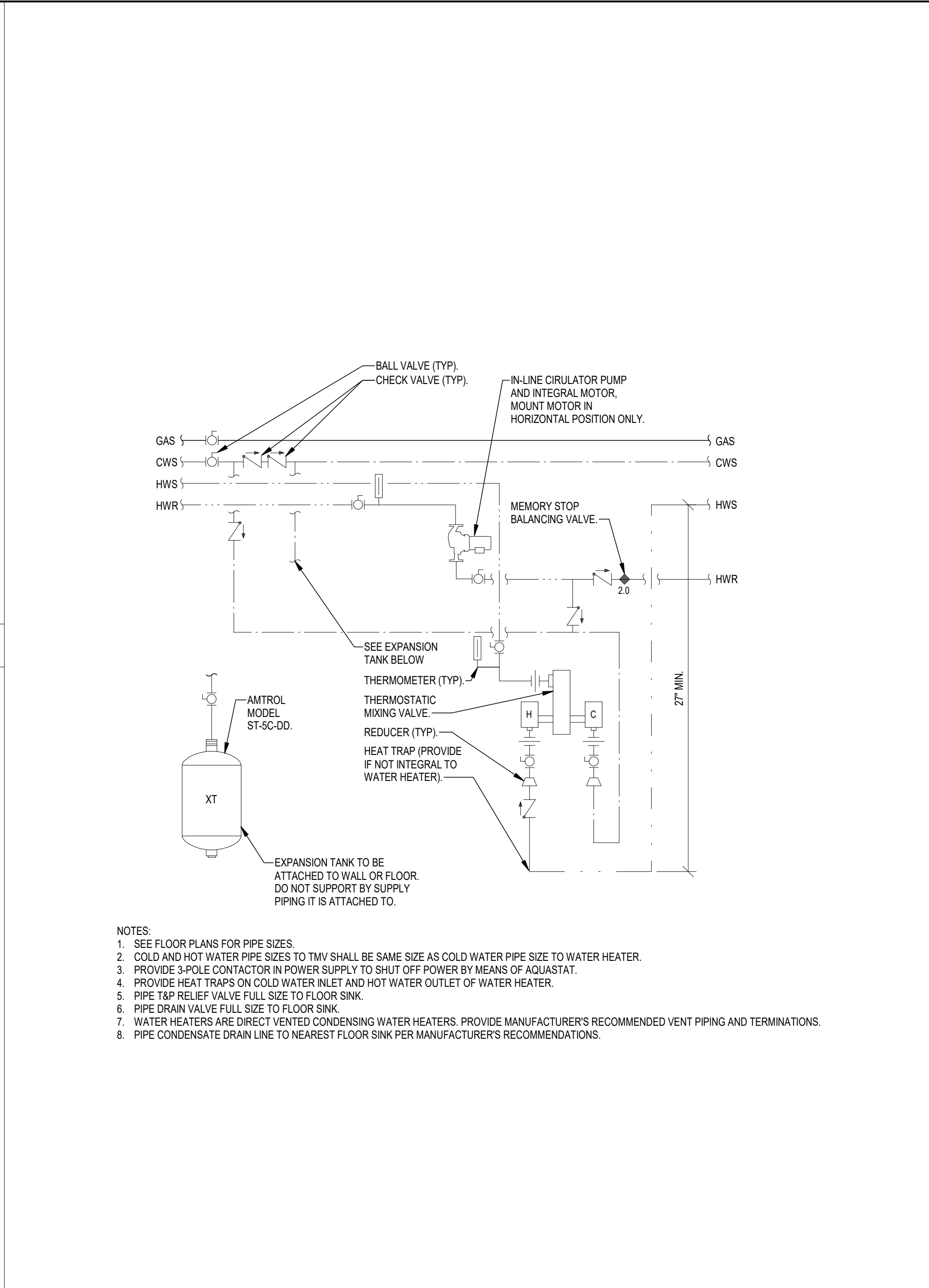
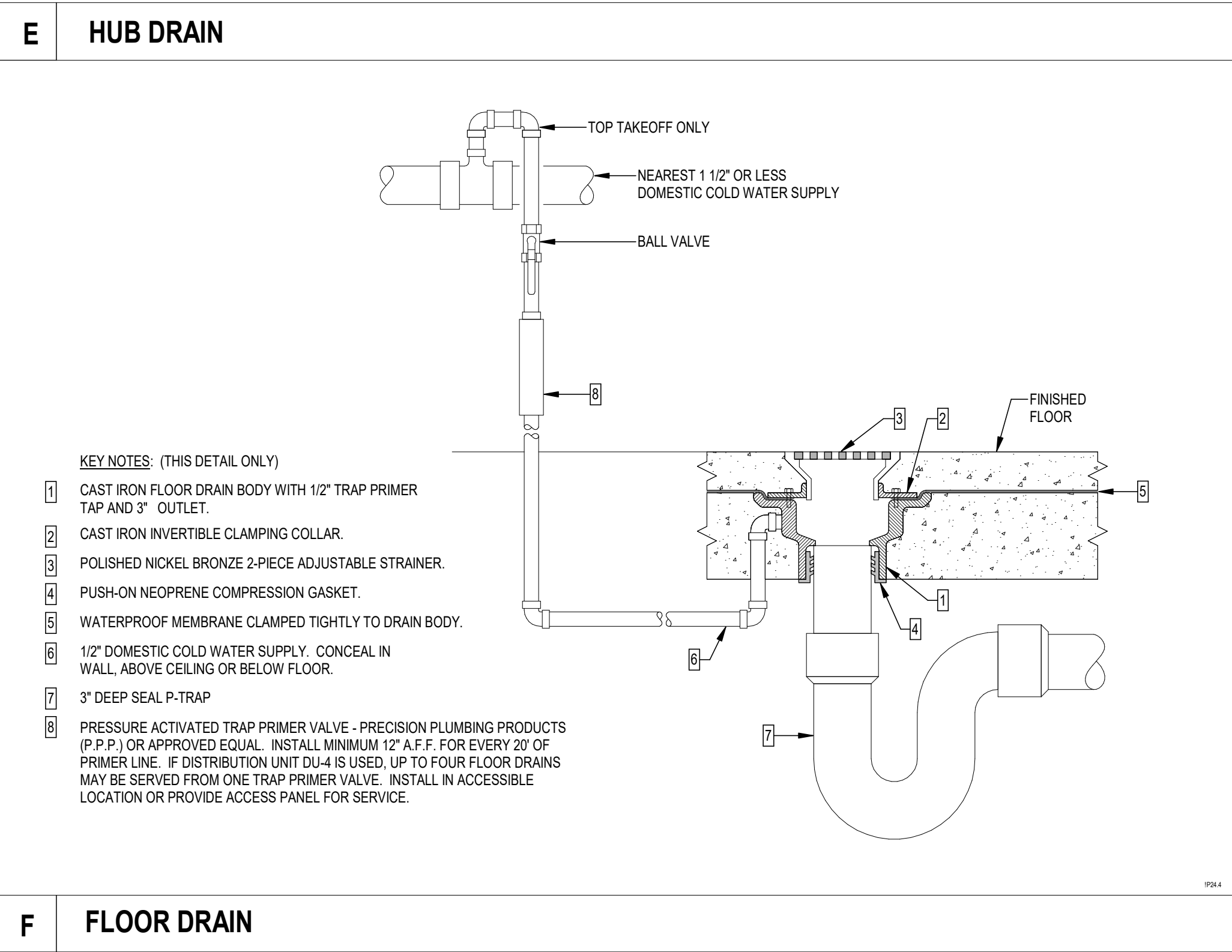
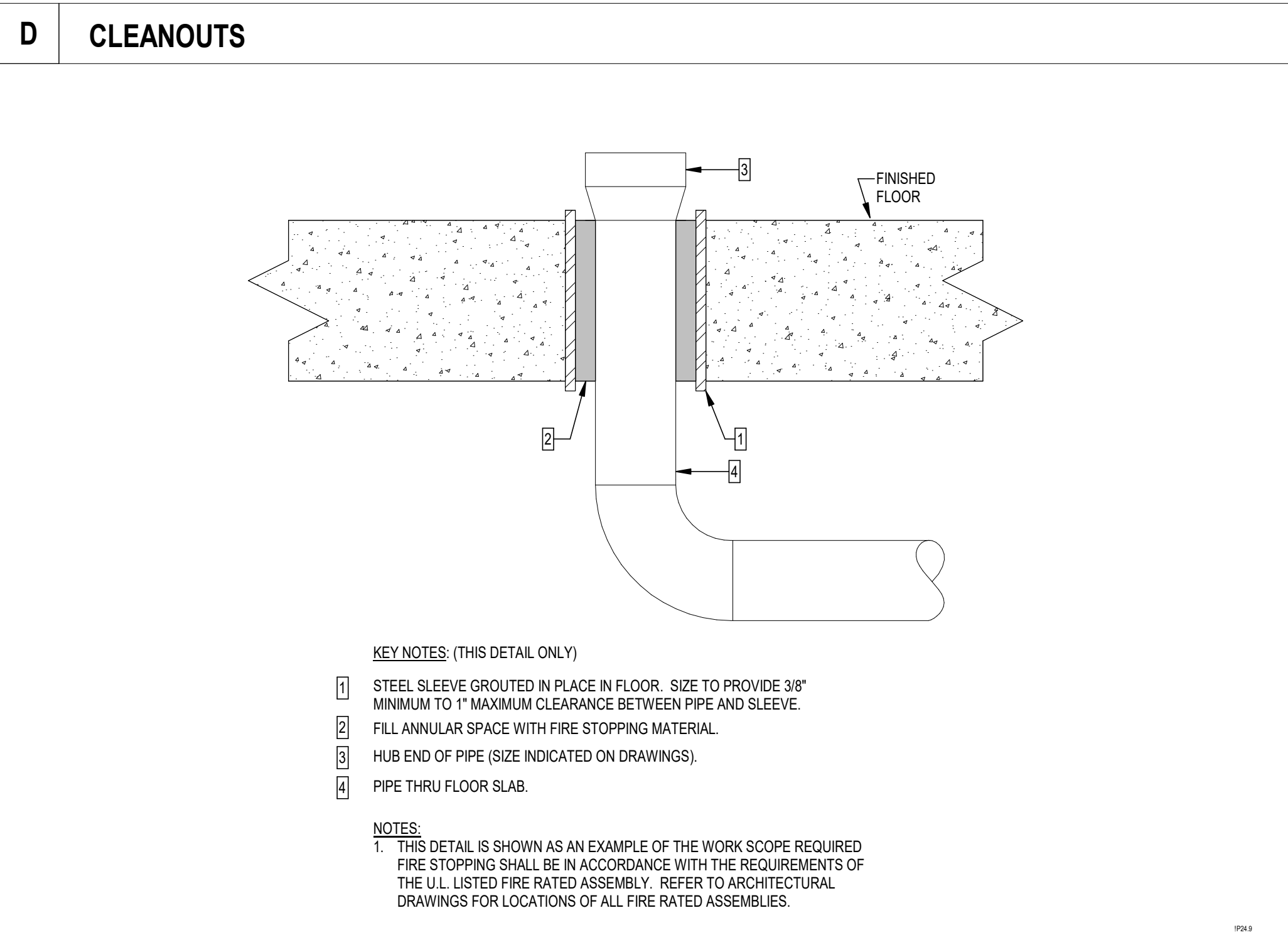
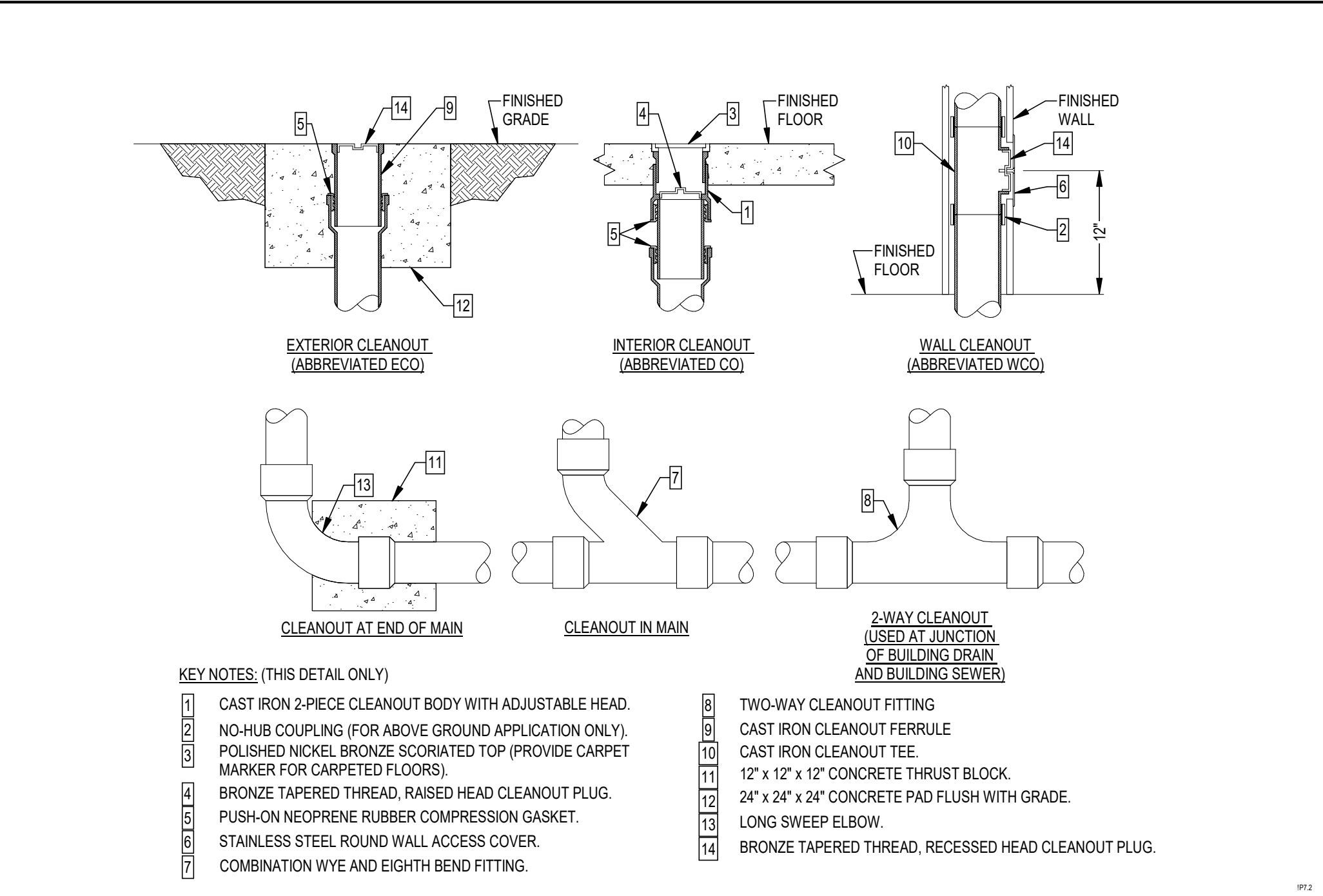
Floor Plan

SHEET NO.:

P1.0

DATE:

08/26/2022



bkj
ARCHITECTURE

BKJ, Inc., Architecture
1621 Physicians Dr.
Tallahassee, Florida 32308
(P) 850.778.8007 | (F) 850.546.8150
www.bkjarchitecture.com
FL Architecture Corporation AA26022280

SEAL:

PROJECT TITLE:
**Electric & Gas Utility -
Backup Control Building
City of Tallahassee**
6201 Capital Circle SE Tallahassee FL 32305

PROJECT NO.: **20.111**
DESIGNED BY: **JPT**
DRAWN BY: **JPT**
CHECKED BY: **MPP**
THIS DRAWING AND ANY REPRODUCTIONS ARE THE PROPERTY AND COPYRIGHT OF BKJ, INC. AND MAY NOT BE REPRODUCED, PUBLISHED OR USED IN ANY MANNER WITHOUT WRITTEN PERMISSION OF THE ARCHITECT

REVISIONS:

PROJECT PHASE:
100% CONSTRUCTION DOCUMENTS

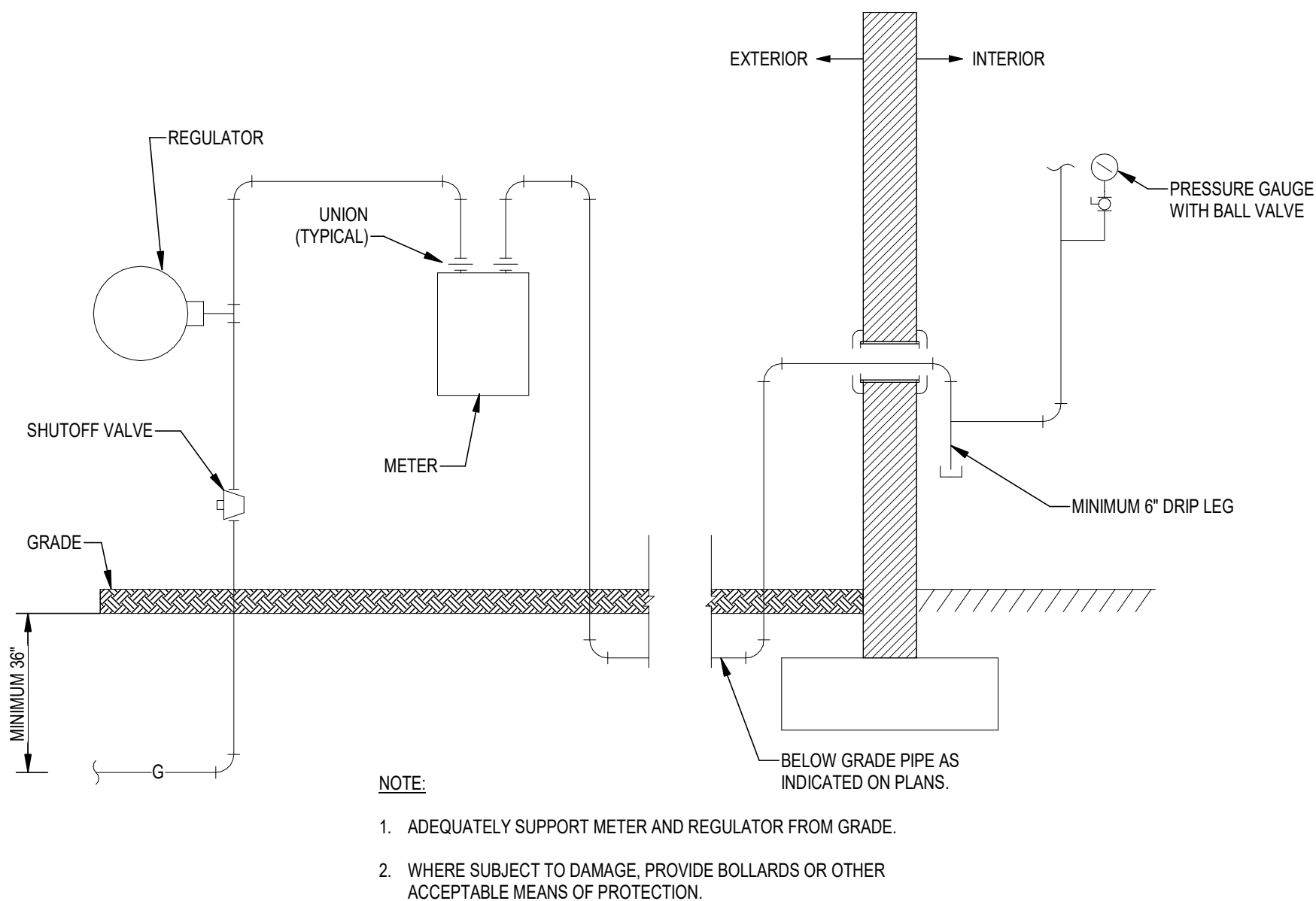
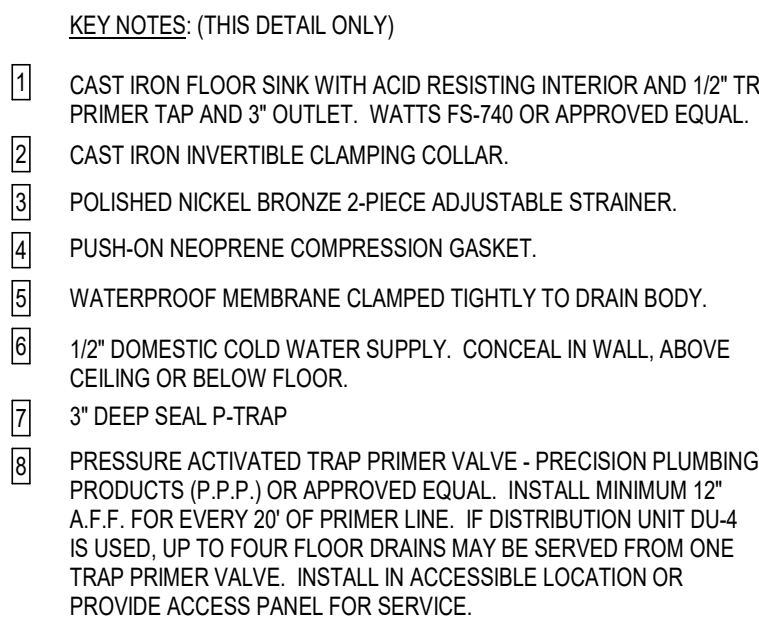
DRAWING TITLE:
Details

SHEET NO.:
P5.1

DATE:
08/26/2022

ENGINEERING
114 EAST 5th AVENUE TALLAHASSEE, FL 32303
32303 PHONE 850.224.7822
www.h2engineering.com
H2E PROJECT No. 21125
THIS DOCUMENT IS THE PROPERTY OF h2Engineering AND IS PREPARED AS AN INSTRUMENT OF SERVICE. ITS USE, REUSE OR REPRODUCTION, EXCEPT BY WRITTEN AGREEMENT WITH h2Engineering, IS PROHIBITED.

Florida Registry #2485
Mark P. Poindexter, P.E. #90615



BKJ, Inc., Architecture
1621 Physicians Dr.
Tallahassee, Florida 32308
(P) 850.778.8007 | (F) 850.546.6150
www.bkjarchitecture.com
FL Architecture Corporation AA260022

PROJECT TITLE:

**Electric & Gas Utility -
Backup Control Building
City of Tallahassee**

PROJECT NO.: 20.111

DESIGNED BY : JPT

DRAWN BY: JPT

CHECKED BY: **MPP**

THIS DRAWING AND ANY REPRODUCTIONS
ARE THE PROPERTY AND COPYRIGHT
OF BKJ, INC. AND MAY NOT BE
REPRODUCED, PUBLISHED, OR USED IN ANY
MANNER WITHOUT WRITTEN
PERMISSION OF THE ARCHITECT

REVISIONS:

PROJECT PHASE:

100% CONSTRUCTION
DOCUMENTS

DRAWING TITLE:

Details

SHEET NO. :

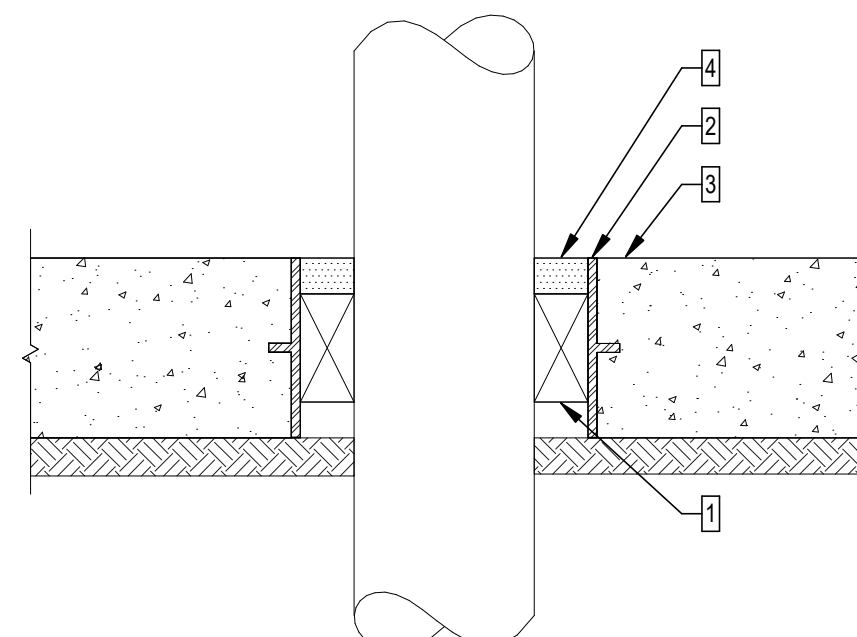
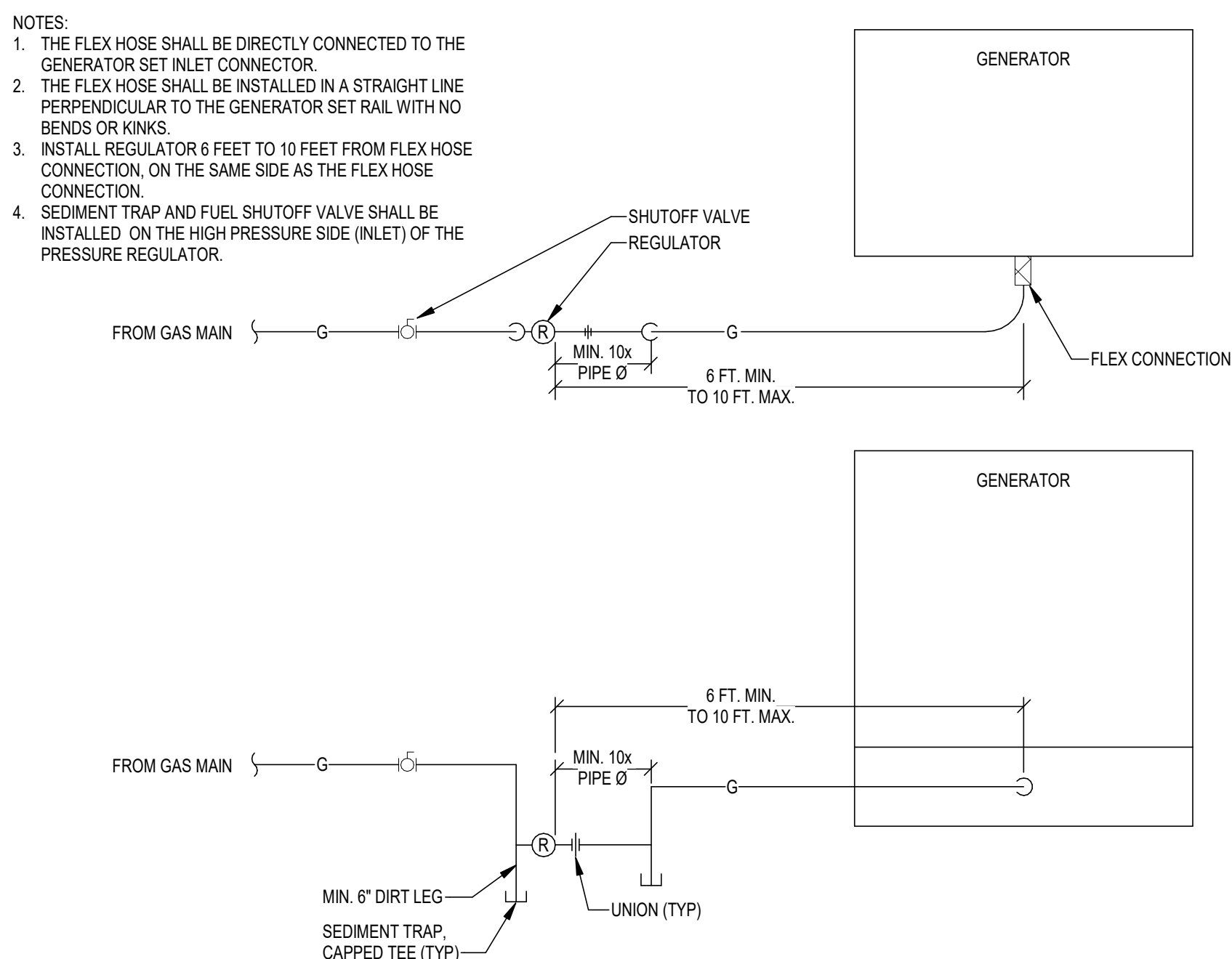
P5.2

DATE:

08/26/2022

D GAS SERVICE ENTRANCE

A PIPE PENETRATION OF NON-FIRE RATED WALL

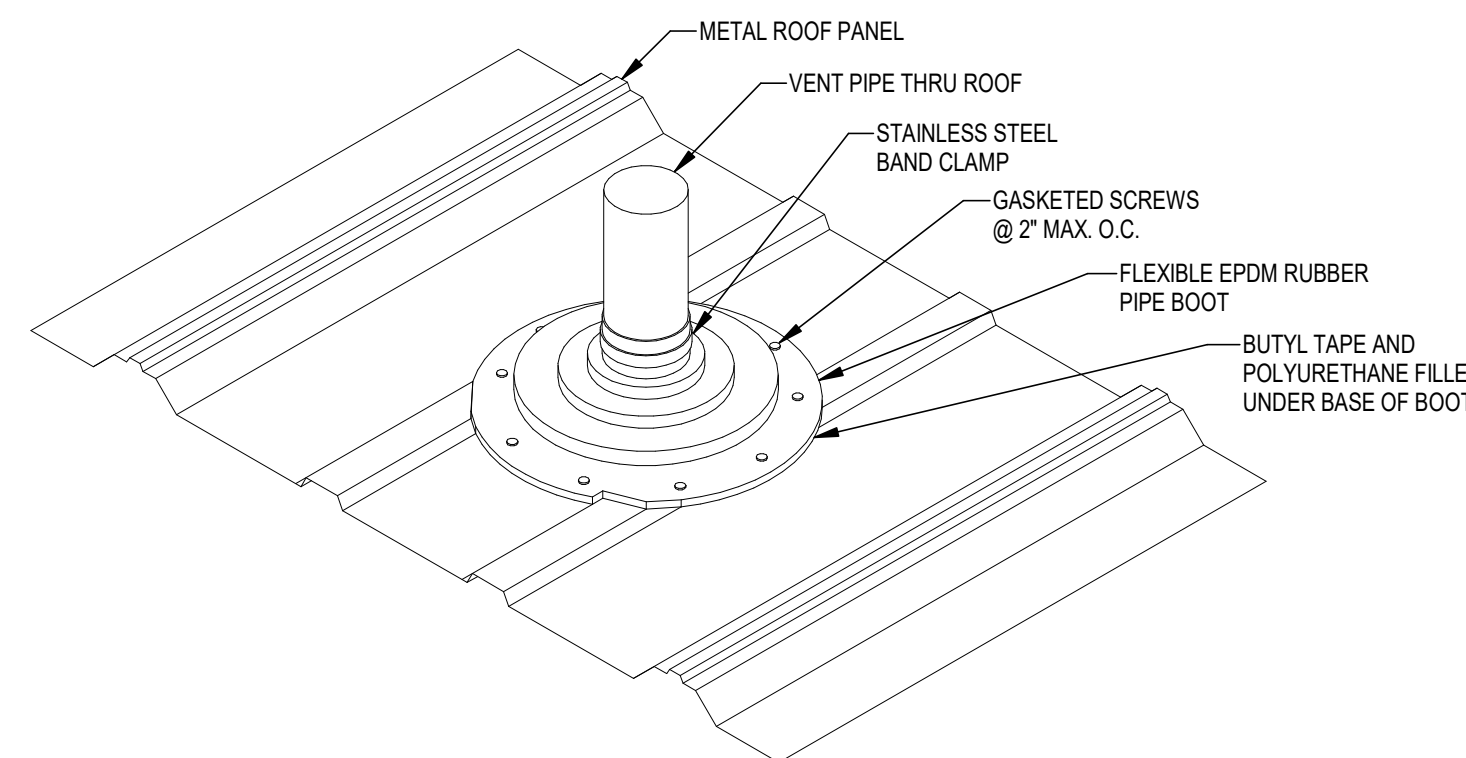
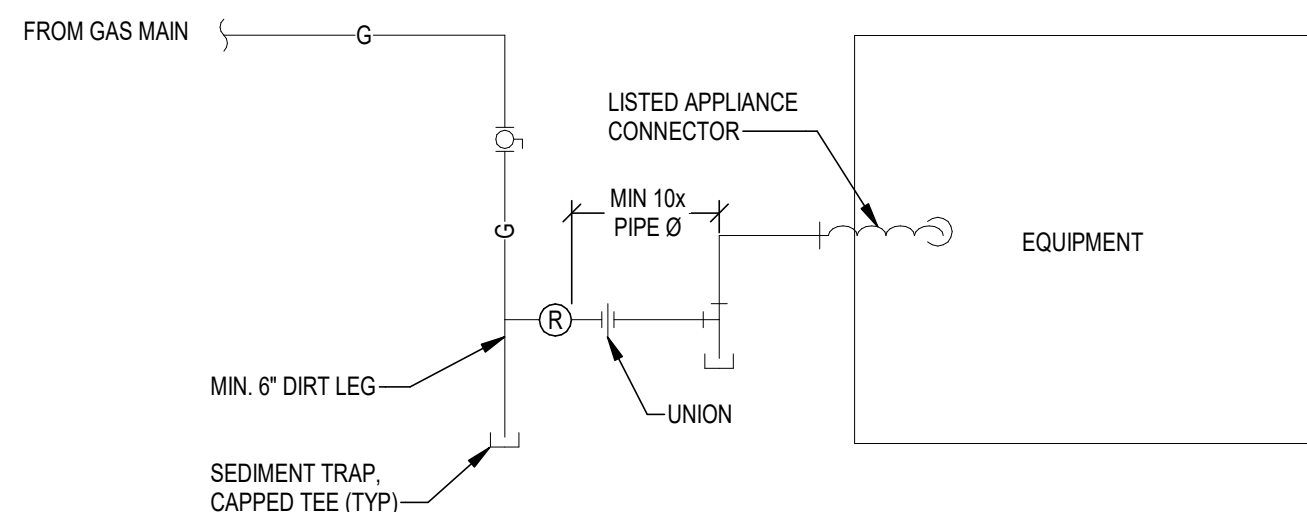


KEY NOTES: (THIS DETAIL ONLY)

- 1 SEAL ANNULAR SPACE AROUND PIPE WITH MODULAR SLEEVE SEAL SYSTEM. MODEL SHALL BE SUITABLE FOR THIS APPLICATION.
- 2 SLEEVE OR CORE DRILL APPROPRIATE SIZE HOLE ACCORDING TO MANUFACTURER'S RECOMMENDATIONS
- 3 FLOOR SLAB ON GRADE.
- 4 COMPLETELY FILL SPACE WITH SEALANT SUITABLE FOR THIS APPLICATION.

E GAS GENERATOR PIPING INSTALLATION

B	SLAB ON GRADE PIPE PENETRATION
----------	---------------------------------------

**2**

ENGINEERING	
114 EAST 5th AVENUE TALLAHASSEE, FL 32303 PHONE: 850.225.2322 www.H2Engineering.com	
H2E PROJECT No. 21125	
THIS DOCUMENT IS THE PROPERTY OF H2Engineering AND IS PREPARED AS AN INSTRUMENT OF SERVICE. ITS USE, REUSE OR REPRODUCTION, EXCEPT BY WRITTEN AGREEMENT WITH H2Engineering, IS PROHIBITED.	
Florida Registry #2485 Mark P. Poindexter, P.E. #90615	