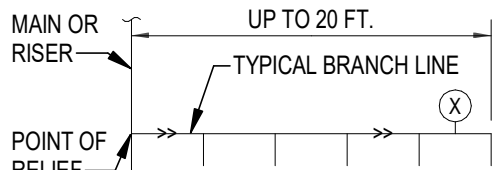


WATER HAMMER ARRESTERS

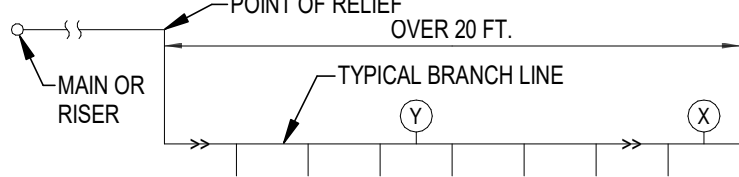
GROUPED FIXTURES						
TABLE 1 - FOR GROUPED FIXTURES						
P.D.I. UNITS	AA	A	B	C	D	E
FIXTURE UNITS	1-3	1-11	12-32	33-60	61-113	114-154

RULE 1 - MULTIPLE FIXTURES NOT EXCEEDING 20 FT.



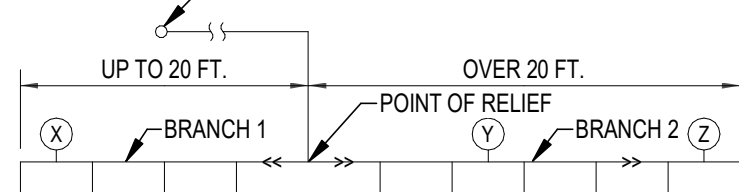
SELECTION METHOD:
USING TABLE 1, SIZE UNIT "X" FOR THE TOTAL FIXTURE UNITS OF BRANCH LINE.

RULE 2 - MULTIPLE FIXTURES EXCEEDING 20 FT.



SELECTION METHOD:
SIZE UNIT "X" AND UNIT "Y" SO THE SUM OF THE RATINGS IS EQUAL TO OR GREATER THAN TOTAL FIXTURE UNITS OF BRANCH LINE.

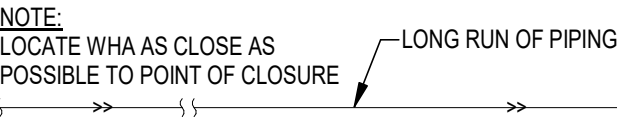
COMBINATION OF RULE 1 AND RULE 2



SELECTION METHOD:
USING TABLE 1, SIZE UNIT "X" FOR BRANCH 1 BASE ON RULE 1. SIZE UNITS "Y" AND "Z" BASED ON RULE 2.

LONG RUNS

TABLE 2 - WATER PRESSURES UP TO 65 P.S.I.G.						
P.D.I. WATER HAMMER ARRESTERS						
LENGTH OF PIPE (FT.)	1/2"	3/4"	1"	1-1/4"	1-1/2"	2"
25	A	A	B	C	D	E
50	A	B	C	D	E	F
75	B	C	D	AB	F	EF
100	C	D	E	F	CF	FF
125	C	D	F	AF	EF	EFF
150	D	E	F	DF	FF	FFF



SELECTION METHOD:
USING EITHER TABLE 2 OR 2A (BASED ON SYSTEM PRESSURE), SIZE UNIT "X" BASED ON SIZE OF PIPE AND LENGTH OF RUN.

GENERAL NOTE:
PROVIDE WATER HAMMER ARRESTERS IN ACCORDANCE WITH STANDARD PDI-WH201

PIPING AND FITTINGS

—+—	CAP
—○—	ELBOW TURNED UP
—○—	ELBOW TURNED DOWN
—○—	TEE, OUTLET UP
—○—	TEE, OUTLET DOWN
—	NEW PIPE
—	EXISTING PIPE TO REMAIN
---	EXISTING PIPE TO BE REMOVED
=====	SANITARY, SOIL OR WASTE PIPING
-----	SANITARY VENT PIPING
--- - - - -	COLD WATER SUPPLY PIPING
HB	HOSE BIBB
W	WATER HAMMER ARRESTER - SEE DETAIL THIS SHEET
FD	FLOOR DRAIN - SEE DETAIL B/P501
CO	CLEAN OUT - SEE DETAIL AP501
FD	SQUARE FLOOR DRAIN - SEE DETAIL B/P501

VALVES

—○—	BALL VALVE (WITH QUARTER TURN HANDLE)
-----	---------------------------------------

MISCELLANEOUS

—+—	POINT OF CONNECTION, NEW TO EXISTING
—+—	POINT INDICATED LIMIT OF DEMOLITION

APPLICABLE CODES

PERFORM WORK IN ACCORDANCE WITH THE FOLLOWING CODES AND ANY APPLICABLE STATUTES, ORDINANCES, CODES, AND REGULATIONS OF GOVERNMENTAL AUTHORITIES HAVING JURISDICTION.

- OCCUPATIONAL SAFETY AND HEALTH REGULATIONS (OSHA).
- FIRE CODES
 - NFPA 1 FIRE CODE - 2021 (FLORIDA EDITION)
 - NFPA 13 STANDARD FOR THE INSTALLATION OF SPRINKLER SYSTEM - 2019
 - NFPA 25 STANDARD FOR THE INSPECTION, TESTING AND MAINTENANCE OF WATER-BASED FIRE PROTECTION SYSTEMS - 2017
 - NFPA 54 NATIONAL FUEL GAS CODE - 2021
 - NFPA 70 NATIONAL ELECTRICAL CODE - 2020
 - NFPA 72 NATIONAL FIRE ALARM AND SIGNALING CODE - 2019
 - NFPA 90A STANDARD FOR THE INSTALLATION OF AIR CONDITIONING AND VENTILATION SYSTEMS - 2021
 - NFPA 90B STANDARD FOR THE INSTALLATION OF WARM AIR HEATING AND AIR CONDITIONING SYSTEMS - 2021
 - NFPA 91 STANDARD FOR THE INSTALLATION OF BLOWER AND EXHAUST SYSTEMS - 2020
 - NFPA 96 STANDARD FOR VENTILATION CONTROL AND FIRE PROTECTION OF COMMERCIAL COOKING OPERATIONS - 2021
 - NFPA 101 LIFE SAFETY CODE - 2021 (FLORIDA EDITION)
- FLORIDA BUILDING CODE, 2023 8th EDITION
 - BUILDING CODE
 - EXISTING BUILDING CODE
 - ENERGY CONSERVATION CODE
 - MECHANICAL CODE
 - PLUMBING CODE
 - FUEL GAS CODE
 - ACCESSIBILITY CODE
- FLORIDA STATUTES
 - CHAPTER 471 ENGINEERING
 - CHAPTER 533.80 BUILDING CONSTRUCTION STANDARDS; FLORIDA BUILDING CODE - ENFORCEMENT
- FLORIDA ADMINISTRATIVE CODE
 - CHAPTER 6A-2 EDUCATIONAL FACILITIES
 - CHAPTER 9B-7 FLORIDA BUILDING COMMISSION HANDICAPPED ACCESSIBILITY STANDARDS
 - CHAPTER 61G15-34 RESPONSIBILITY RULES OF PROFESSIONAL ENGINEERS CONCERNING THE DESIGN OF MECHANICAL SYSTEMS
 - CHAPTER 69A-3 FIRE PREVENTION - GENERAL PROVISIONS
 - CHAPTER 69A-58 FIRE SAFETY IN EDUCATIONAL FACILITIES
 - CHAPTER 69A-60 THE FLORIDA FIRE PREVENTION CODE

RESOLVE, IN WRITING, ANY CODE VIOLATION DISCOVERED IN CONTRACT DOCUMENTS WITH THE ENGINEER PRIOR TO BIDDING. AFTER AWARD OF THE CONTRACT, MAKE ANY CORRECTION OR ADDITION NECESSARY FOR COMPLIANCE WITH APPLICABLE CODES AT NO ADDITIONAL COST TO OWNER.

THE CONTRACTOR SHALL INCLUDE IN THE WORK, WITHOUT EXTRA COST TO THE OWNER, ANY LABOR, MATERIALS, SERVICES, APPARATUS, AND DRAWINGS REQUIRED TO COMPLY WITH ALL APPLICABLE LAWS, ORDINANCES, RULES, AND REGULATIONS.

WHERE THERE IS CONFLICT BETWEEN THE CONTRACT DOCUMENTS AND THE APPLICABLE CODES, THE CODES SHALL GOVERN, EXCEPT WHERE THE REQUIREMENTS OF THE CONTRACT DOCUMENTS ARE MORE STRINGENT.

MINIMUM REQUIRED SLOPE

DRAINAGE TYPE	SIZE (INCHES)	MINIMUM SLOPE (INCH / FOOT) - NOTE 1
SANITARY (NOTE 2)	2-1/2" OR LESS	1/4"
	3" TO 6"	1/8"
	8" OR LARGER	1/16"
STORM (NOTE 3)	12" OR LESS	1/16"
CONDENSATE	4" OR LESS	1/8"

- NOTES:
- UNLESS NOTES OTHERWISE ON PLANS.
 - COMBINATION WASTE AND VENT PIPING SHALL BE RUN AT A MAXIMUM SLOPE OF 1/2" PER FOOT.
 - SEE ROOF DRAINAGE SCHEDULE FOR SLOPE AT EACH ROOF DRAIN.

ABBREVIATIONS

AC	ABOVE CEILING	LV	LAVATORY
AFF	ABOVE FINISHED FLOOR	N/A	NOT APPLICABLE
AHAP	AS HIGH AS POSSIBLE	NS	NOT IN SCOPE
BG	BELOW GRADE	PSAN	SANITARY
CWS	COLD WATER SUPPLY	PVENT	VENT
DN	DOWN	TYP	TYPICAL
EX	EXISTING	UR	URINAL
EWC	ELECTRIC WATER COOLER	VTR	VENT THROUGH ROOF
FD	FLOOR DRAIN	WC	WATER CLOSET
HB	HOSE BIBB	WCO	WALL CLEANOUT
HD	HUB DRAIN		
IE	INVERT ELEVATION		

GENERAL NOTES

- DRAWINGS ARE DIAGRAMMATIC, INDICATIVE OF WORK TO BE FURNISHED AND INSTALLED UNDER THIS CONTRACT. REFER TO ARCHITECTURAL AND STRUCTURAL DRAWINGS FOR ALL DIMENSIONS.
- FIELD VERIFY ALL DIMENSIONS AND ALL CONDITIONS. IF THE CONTRACTOR IS UNABLE TO INTERPRET THE CONTRACT DOCUMENTS, HE IS RESPONSIBLE TO REQUEST CLARIFICATION IN WRITING TO THE ARCHITECT. IF HE PROCEEDS WITH ANY WORK BEFORE OBTAINING CLARIFICATION, HE SHALL BE HELD RESPONSIBLE FOR ALL DEFICIENCIES ASSOCIATED THEREWITH.
- BEFORE SUBMITTING FOR THE WORK, EACH BIDDER WILL BE RESPONSIBLE TO EXAMINE THE PREMISES AND SATISFY HIMSELF AS TO THE EXISTING CONDITIONS UNDER WHICH HE WILL BE OBLIGATED TO OPERATE AND COMPLETE THE WORK UNDER THIS CONTRACT. NO ALLOWANCE WILL SUBSEQUENTLY BE MADE IN THIS CONNECTION ON BEHALF OF THE CONTRACTOR FOR ANY ERROR OR OMISSION ON HIS PART.
- THE CONTRACTOR SHALL PAY FOR ALL INSPECTION PERMITS, CERTIFICATES, CONNECTION FEES, SYSTEM DEMAND CHARGES AND LICENSE FEES IN CONNECTION WITH HIS WORK.
- CONSTRUCTION MANAGER SHALL BE RESPONSIBLE FOR COORDINATING WORK OF ALL SUBCONTRACTORS TO AVOID INTERFERENCES.
- ALL WORK SHALL COMPLY WITH APPLICABLE O.S.H.A. AND E.P.A. REGULATIONS AND GUIDELINES.
- ERECT AND MAINTAIN ALL REASONABLE PRECAUTIONS FOR SAFETY AND HEALTH INCLUDING POSTING DANGER SIGNS AND OTHER WARNINGS AGAINST HAZARDS INCLUDING PROMULGATING SAFETY REGULATIONS. PROVIDE SAFETY PRECAUTIONS AND BARRICADES FOR PEDESTRIANS AT CONSTRUCTION VEHICLE ACCESS AND EGRESS LOCATIONS.
- COORDINATE AND SEQUENCE ALL DEMOLITION, CLEANING AND CONSTRUCTION WORK. SUBMIT A COMPLETELY DETAILED CONSTRUCTION SCHEDULE PRIOR TO PRE-CONSTRUCTION CONFERENCE.
- THE CONTRACTOR SHALL STRICTLY BE HELD TO THE PROJECT SCHEDULE. HE SHALL PROVIDE SUFFICIENT MANPOWER AND EQUIPMENT TO FULLY MOBILIZE, PROCEED WITH AND COMPLETE THE WORK.
- THE CONTRACTOR SHALL BE RESTRICTED TO AREAS SPECIFIED BY THE OWNER FOR ON-SITE STORAGE OF CONSTRUCTION MATERIALS. THE CONTRACTOR IS RESPONSIBLE FOR THE PROTECTION AND SECURITY OF ALL EQUIPMENT AND MATERIALS.
- THE CONTRACTOR SHALL MAINTAIN A CLEAN WORK ENVIRONMENT AT ALL TIMES AND SHALL CLEAN CONSTRUCTION SITE OF ALL DEBRIS AT COMPLETION OF THE JOB AND BEFORE FINAL PAYMENT IS MADE.
- THE CONTRACTOR SHALL FURNISH "AS-BUILT" DRAWINGS TO THE ARCHITECT AT COMPLETION OF CONSTRUCTION.
- CONTRACTOR'S USE OF AN APPROVAL STAMP ON DOCUMENTS SUBMITTED AS SHOP DRAWINGS, PRODUCT DATA, SAMPLES AND SIMILAR SUBMITTALS CERTIFIED THAT THE CONTRACTOR HAS COMPLIED WITH THE CONTRACT DOCUMENT REQUIREMENTS RELATES TO "SHOP DRAWINGS, PRODUCT DATA AND SAMPLES".
- THE CONTRACTOR SHALL NOT BE RELIEVED OF RESPONSIBILITY FOR DEVIATIONS FROM REQUIREMENTS OF THE CONTRACT DOCUMENTS BY THE ARCHITECT/ENGINEER'S APPROVAL OF SHOP DRAWINGS, PRODUCT DATA, SAMPLES OR SIMILAR SUBMITTALS UNLESS THE CONTRACTOR HAS SPECIFICALLY INFORMED THE ARCHITECT/ENGINEER IN WRITING OF SUCH DEVIATION AT THE TIME OF SUBMITTAL AND THE ARCHITECT/ENGINEER HAS GIVEN WRITTEN APPROVAL TO THE SPECIFIC DEVIATION. THE CONTRACTOR SHALL NOT BE RELIEVED OF RESPONSIBILITY FOR ERRORS OR OMISSIONS IN SHOP DRAWINGS, PRODUCT DATA, SAMPLES OR SIMILAR SUBMITTALS BY THE ARCHITECT/ENGINEER'S APPROVAL THEREOF.
- PRIOR TO INSTALLATION, COORDINATE AND ADJUST THE FINAL LOCATION OF ALL WALL MOUNTED DEVICES AND EQUIPMENT WITH ALL CASEWORK, SHELVING, BULLETIN BOARDS OR OTHER WALL MOUNTED FURNISHINGS.
- NOTE ANY SPECIAL REQUIREMENTS INVOLVED IN INSTALLING THE EQUIPMENT IN THE BUILDING.
- WHERE CONFLICTS OCCUR BETWEEN CODES AND BETWEEN THE CONSTRUCTION DOCUMENTS AND CODES, THE MOST RESTRICTIVE REQUIREMENTS SHALL GOVERN.
- DISMANTLING AND REASSEMBLING OF ANY EQUIPMENT SHALL BE DONE AS REQUIRED FOR ENTRY INTO THE BUILDING AND EQUIPMENT ROOM.
- PROTECT THE ROOF FROM DAMAGE WHENEVER ANY WORK ON THE ROOF IS REQUIRED.
- SUPPORTS AND HANGERS SHALL PRESENT A NEAT, ORDERLY APPEARANCE.
- ALL ROOF MOUNTED EQUIPMENT SHALL BE SECURED TO STRUCTURE TO RESIST A 130 MPH WIND LOAD.
- CONTRACTOR SHALL MAINTAIN THE INTEGRITY OF ALL FIRE, SMOKE, AND ACOUSTICAL WALL ASSEMBLIES.
- BEAM AND FLOOR PENETRATIONS SHALL BE APPROVED BY THE STRUCTURAL ENGINEER. BEAM SLEEVES AND BEAM REINFORCING APPROVED BY STRUCTURAL ENGINEER SHALL BE FURNISHED AND INSTALLED BY THIS CONTRACTOR.
- CONTRACTOR SHALL FURNISH U.L. APPROVED DRAWINGS FOR EACH TYPE OF FIRE RATED ASSEMBLY PENETRATION BY DUCTS, PIPES OR CONDUITS. THESE DRAWINGS SHALL BE DISPLAYED ON THE JOB SITE AT ALL TIMES DURING CONSTRUCTION. SEE SPECIFICATIONS.
- CONTRACTOR SHALL GUARANTEE THE WORK AND MATERIALS FOR A PERIOD OF ONE YEAR FROM DATE OF FINAL ACCEPTANCE. THIS GUARANTEE SHALL BE IN ADDITION TO THE WARRANTIES PROVIDED BY MATERIAL SUPPLIERS AND MANUFACTURERS.
- THE BUILDING WILL REMAIN OCCUPIED DURING CONSTRUCTION. THE OWNER WILL MAKE ALL REASONABLE EFFORTS TO ASSIST THE CONTRACTOR IN COMPLETING THE WORK. COORDINATE ALL WORK WITH THE OWNER'S DESIGNATED REPRESENTATIVE.
- EXIT WAYS SHALL BE KEPT CLEAR. IF AN EXIT MUST BE TEMPORARILY BLOCKED, PROVIDE THE REQUIRED BARRICADE AND DIRECTIONAL SIGNS FOR TEMPORARY EXITING AND SAFETY.
- REMOVE AND REPAIR OR RE-INSTALL EXISTING CEILING ASSEMBLIES AS REQUIRED. REPLACE ANY ASSEMBLIES DAMAGED OR SOILED DURING CONSTRUCTION.
- PROVIDE PROPER PROTECTIVE MEASURES TO PROTECT EXISTING FURNITURE, CARPET AND FINISHES DURING THE COURSE OF CONSTRUCTION. TAKE CARE NOT TO DAMAGE EXISTING SURFACES. REPAIR TO MATCH EXISTING CONDITIONS AS REQUIRED.
- SEAL ALL HOLES IN WALLS, CEILINGS, FLOORS, ETC. TO MATCH EXISTING ADJACENT SURFACES WHERE EQUIPMENT, CONDUIT AND/OR PIPING ARE REMOVED.
- ALL EXISTING EQUIPMENT IS THE PROPERTY OF THE OWNER AND SHALL BE DISPOSED OF AS DIRECTED BY THE OWNER. DISPOSE OF ALL MATERIALS AND EQUIPMENT SHOWN TO BE REMOVED IN ACCORDANCE WITH LOCAL REGULATIONS.
- ITEMS REMOVED AND SAVED FOR REUSE SHALL BE PROTECTED FROM DAMAGE DURING CONSTRUCTION. CONTRACTOR SHALL IDENTIFY ANY DEFECTIVE MATERIALS PRIOR TO DEMOLITION. CONTRACTOR SHALL BE RESPONSIBLE FOR ALL DAMAGE TO MATERIALS AT PROJECT COMPLETION NOT IDENTIFIED PRIOR TO DEMOLITION.
- RELOCATE, AS REQUIRED, ANY EXISTING WIRE AND CONDUIT WHICH INTERFERES WITH INSTALLATION OF THE NEW WORK.
- REMOVE ALL ELECTRICAL EQUIPMENT (CONDUIT, POWER & CONTROL WIRING, DISCONNECT SWITCHES, STARTERS, ETC.) RELATED TO EQUIPMENT BEING REMOVED OR REPLACED.
- CONTRACTOR SHALL COMPLY WITH "TRENCH SAFETY ACT" (FLORIDA STATUTE 553 PART III) AND OSHA STANDARD 29 CFR 1926.650 SUBPART P FOR ALL UTILITY TRENCHES IN EXCESS OF 5 FEET DEEP. CONTRACTOR SHALL INDICATE WITHIN HIS BID RESPONSE A REFERENCE TO THE TRENCH SAFETY STANDARD AND A SEPARATE LINE ITEM COST OF COMPLIANCE WITH STANDARD.

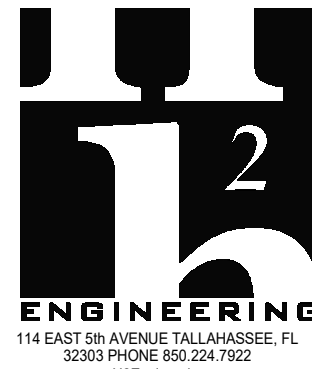
PLUMBING NOTES

- INSTALL ALL WORK IN ACCORDANCE WITH THE FLORIDA PLUMBING CODE AND LOCAL PLUMBING CODES. WHERE CONFLICTS OCCUR BETWEEN CODES AND BETWEEN THE CONSTRUCTION DOCUMENTS AND CODES, THE MOST RESTRICTIVE REQUIREMENTS SHALL GOVERN.
- ALL MISCELLANEOUS EQUIPMENT TO BE FURNISHED UNDER OTHER SECTIONS OF THE SPECIFICATIONS THAT REQUIRE PIPING SHALL BE RECEIVED AND SET WITH ROUGH-IN AND FINAL CONNECTIONS MADE UNDER THESE SECTIONS.
- PRESSURE TEST ALL WATER PIPING SYSTEMS AT 150% OF NORMAL WORKING PRESSURE.
- INSTALLATION OF EQUIPMENT AND PIPING SHALL PROVIDE CONVENIENT ACCESS FOR MAINTENANCE.
- ALL FLOOR DRAINS AND FLOOR SINKS SHALL HAVE MINIMUM 3" DRAIN LINES, DEEP SEAL TRAPS AND AUTOMATIC TRAP PRIMERS (MANUFACTURER: PRECISION PLUMBING PRODUCTS).
- WATER HAMMER ARRESTERS SHALL BE INSTALLED IN ACCORDANCE WITH PDI-WH201.
- ALL HOSE BIBBS, SILL COCKS AND/OR FAUCETS WITH HOSE CONNECTIONS SHALL HAVE A VACUUM BREAKER.
- GRAVITY FLOW SYSTEMS HAVE SPACE PRIORITY FOR SLOPING PIPES, HOWEVER SLOPE MUST BE STARTED AT HIGHEST POINT POSSIBLE.
- ALL PLUMBING VENTS SHALL BE 2" MINIMUM, UNLESS NOTED OTHERWISE.
- PROVIDE ACCESS PANEL AT EACH LOCATION WHERE A VALVE OR OTHER DEVICE REQUIRING SERVICE IS LOCATED ABOVE AN INACCESSIBLE CEILING OR INSIDE A WALL.
- ANY PIPE THAT PASSES UNDER A FOOTING OR THROUGH A FOUNDATION WALL SHALL BE PROVIDED WITH A RELIEVING ARCH, OR A PIPE SLEEVE. SLEEVE SHALL BE BUILT INTO THE FOUNDATION WALL. THE SLEEVE SHALL BE TWO PIPE SIZES GREATER THAN THE PIPE PASSING THROUGH THE WALL.
- LOCATIONS OF EXISTING BELOW GRADE OR CONCEALED UTILITIES ARE BASED ON REFERENCE MATERIALS PROVIDED TO THE ENGINEER AND HAVE NOT BEEN VERIFIED. CONTRACTOR SHALL LOCATE CONCEALED ELEMENTS AND NOTIFY ENGINEER IF VARIANCES BETWEEN THESE DOCUMENTS AND ACTUAL FIELD CONDITIONS EXIST AND MAY MATERIALLY AFFECT THE DESIGN INTENT.

DRAWING INDEX

P001	GENERAL NOTES, LEGENDS & SCHEDULES
PD101	DEMOLITION PLAN
P101	RENOVATION PLAN
P401	SCHEDULES
P501	DETAILS & RISER DIAGRAMS

CONSULTANTS



PROJECT NO. 24156
THIS DOCUMENT IS THE PROPERTY OF HCE/Engineering and is prepared as an INSTRUMENT OF SERVICE. ITS REUSE OR REPRODUCTION WITHOUT WRITTEN AGREEMENT WITH HCE/Engineering IS PROHIBITED.

Florida Registry #2485
Mark P. Poindexter, P.E. #90615



ARCHITECTURE
INTERIOR DESIGN
BUILDING ENVELOPE

211 JOHN KNOX RD, SUITE 105
TALLAHASSEE, FL 32303
PH: (850) 385 9200

AA 2600806
MLDARCHITECTS.COM

RAA MIDDLE SCHOOL DINING
EXPANSION PROJECT
LEON COUNTY SCHOOL BOARD
TALLAHASSEE, FLORIDA

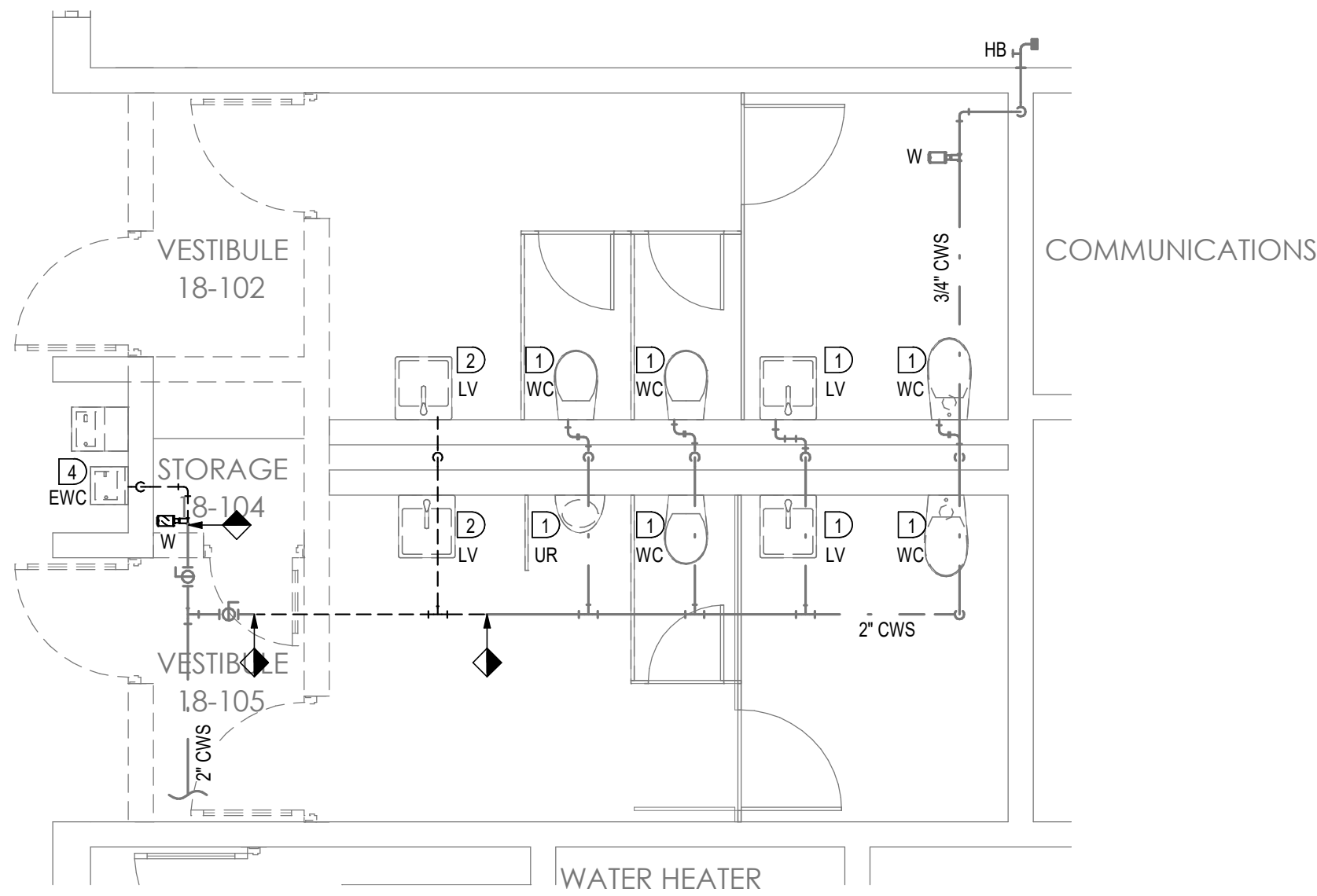
PHASE III
100% SUBMITTAL

PROJ. NO.	174324
DATE	04/02/2025
DRAWN	JPT
CHECKED	MPP
APPROVED	MPP
REVISION	
REVISION DATE	

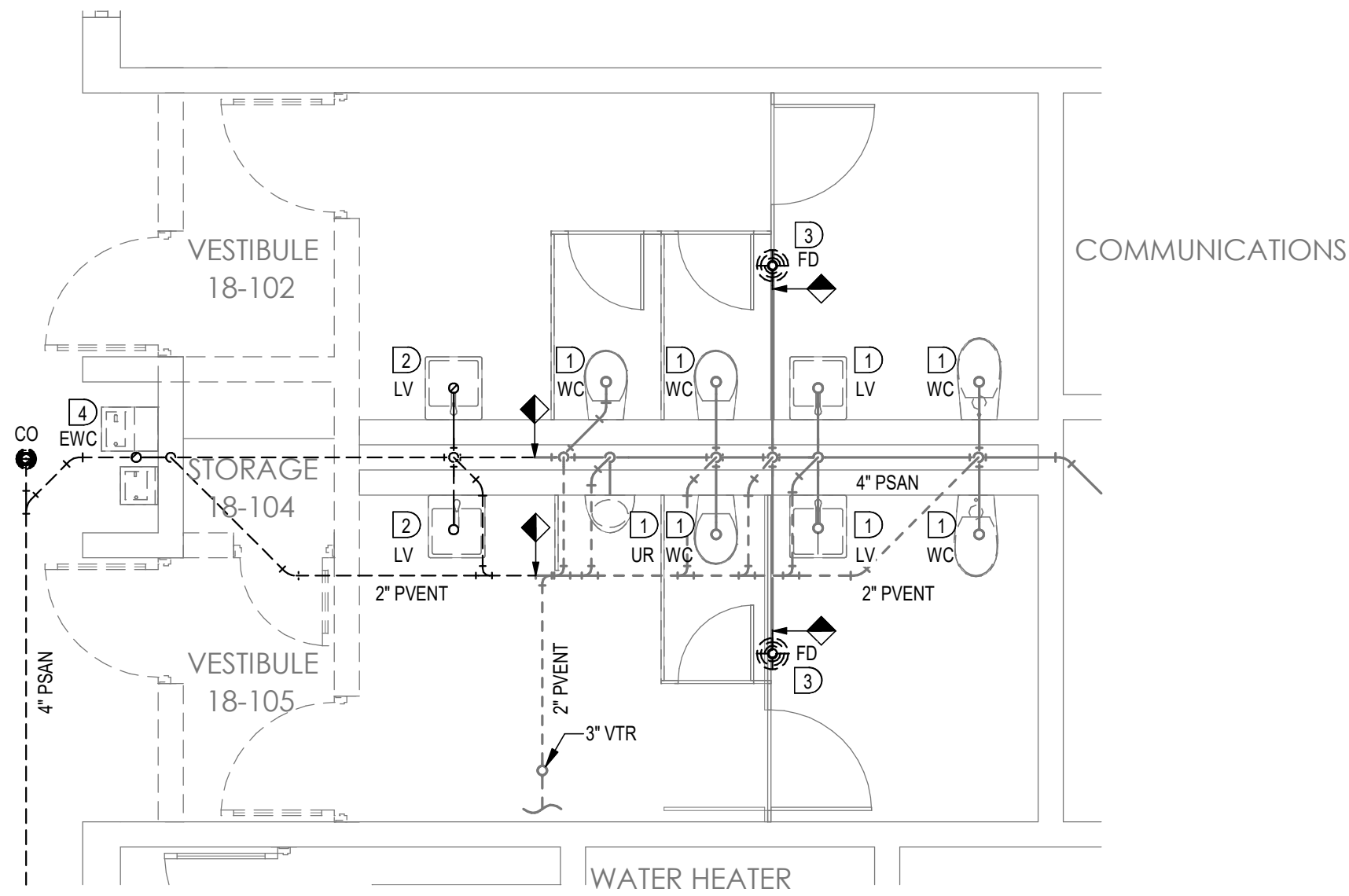
GENERAL NOTES,
LEGENDS &
SCHEDULES

P001

B
ENLARGED RESTROOM PLAN - DEMO - SUPPLY
PD101 SCALE: 1/4" = 1'-0"



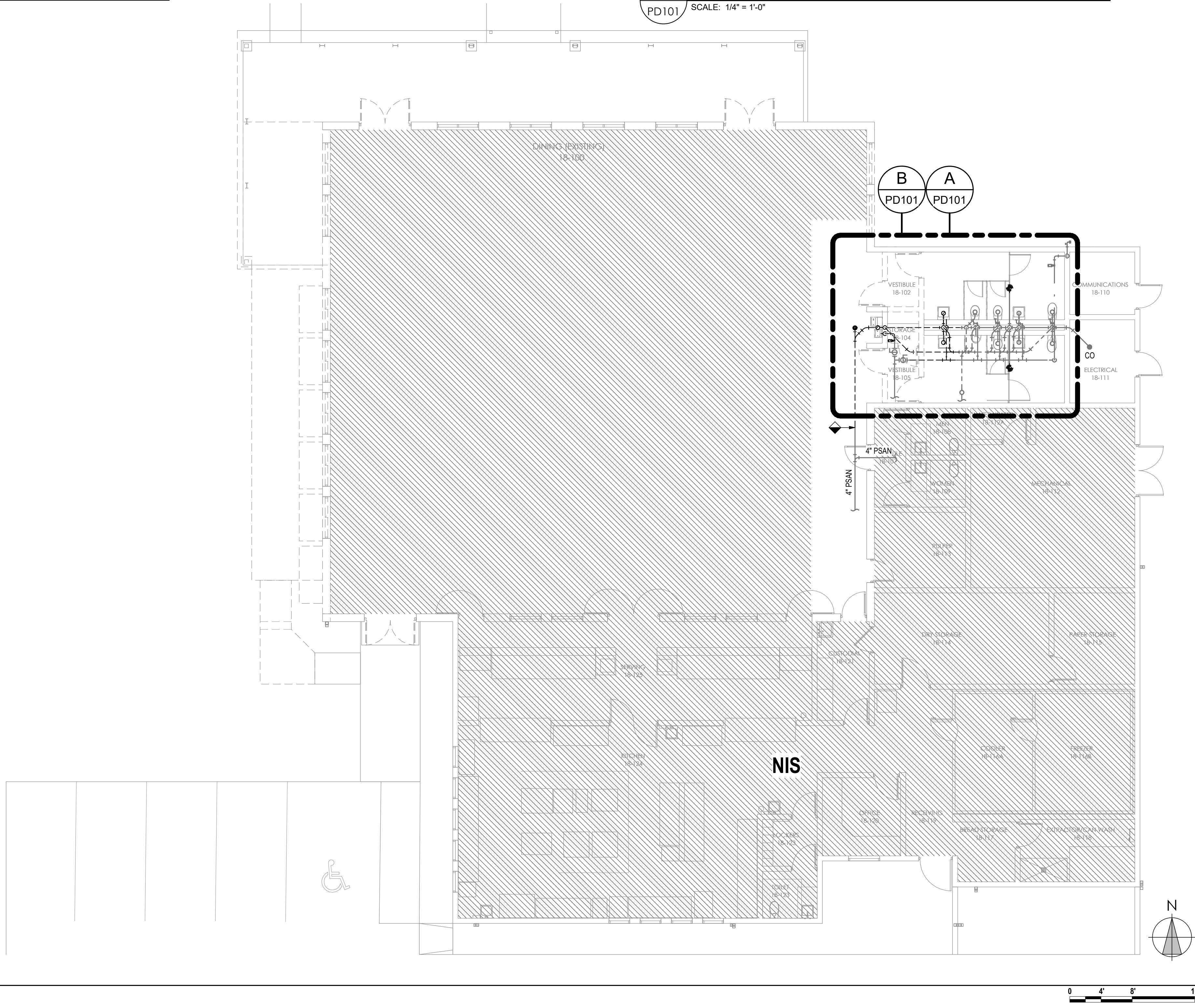
A
ENLARGED RESTROOM PLAN - DEMO - WASTE & VENT
PD101 SCALE: 1/4" = 1'-0"



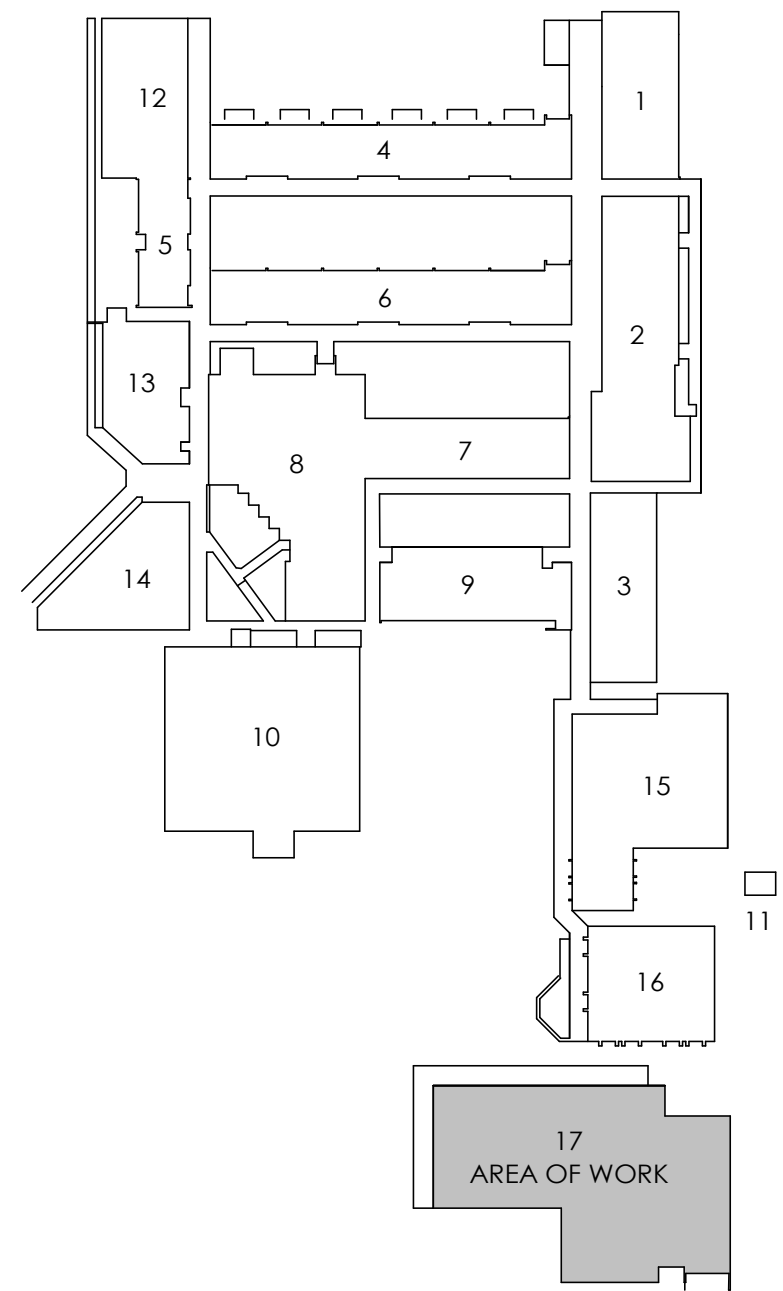
DEMOLITION KEYNOTES

- 1 DEMOLISH PLUMBING FIXTURE AND ASSOCIATED FAUCET/VALVE, FIXTURE APPLICABLE P-TRAP, AND SUPPLY STOPS. WATER SUPPLY, WASTE AND VENT PIPING TO REMAIN FOR RECONNECTION AS INDICATED ON RENOVATION PLANS.
- 2 DEMOLISH PLUMBING FIXTURE AND ALL ASSOCIATED WATER SUPPLY, WASTE AND VENT PIPING TO LIMITS INDICATED. EXTEND AND RECONNECT AS INDICATED ON RENOVATION PLANS.
- 3 DEMOLISH FD AND ASSOCIATED 3" SANITARY PIPING TO LIMIT INDICATED. CAP PIPING AND PATCH FLOOR TO MATCH ADJACENT SURFACE.
- 4 REMOVE, CLEAN AND STORE FIXTURE FOR REUSE AS INDICATED ON RENOVATION PLAN. DEMOLISH WATER SUPPLY, WASTE AND VENT PIPING TO LIMITS INDICATED. EXTEND AND RECONNECT AS INDICATED ON RENOVATION PLANS.

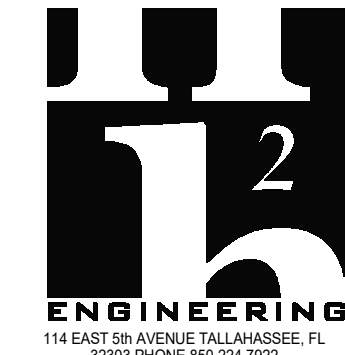
1
DEMOLITION PLAN
PD101 SCALE: 1/8" = 1'-0"



KEY PLAN



CONSULTANTS



ENGINEERING
111 EAST 5TH AVENUE, TALLAHASSEE, FL 32303
PHONE: 850.224.7922
WWW.H2ENGINEERING.COM
PGE PROJECT No. 24136
THIS DOCUMENT IS THE PROPERTY OF H2ENGINEERING AND IS PREPARED AS AN INSTRUMENT OF SERVICE. ITS USE, REUSE OR REPRODUCTION, EXCEPT BY WRITTEN AGREEMENT WITH H2ENGINEERING, IS PROHIBITED.
Florida Registry #2485
Mark P. Poindexter, P.E. #90615



ARCHITECTURE
INTERIOR DESIGN
BUILDING ENVELOPE
211 JOHN KNOX RD, SUITE 105
TALLAHASSEE, FL 32303
PH: (850) 385 9200
AA 26000006
MLDARCHITECTS.COM

**RAA MIDDLE SCHOOL DINING
EXPANSION PROJECT**
LEON COUNTY SCHOOL BOARD
TALLAHASSEE, FLORIDA

**PHASE III
100% SUBMITTAL**

PROJ. NO. 174324
DATE 04/02/2025
DRAWN JPT
CHECKED MPP
APPROVED MPP
REVISION
REVISION DATE

DEMOLITION PLAN

PD101

B

P101

ENLARGED RESTROOM PLAN - RENO - SUPPLY

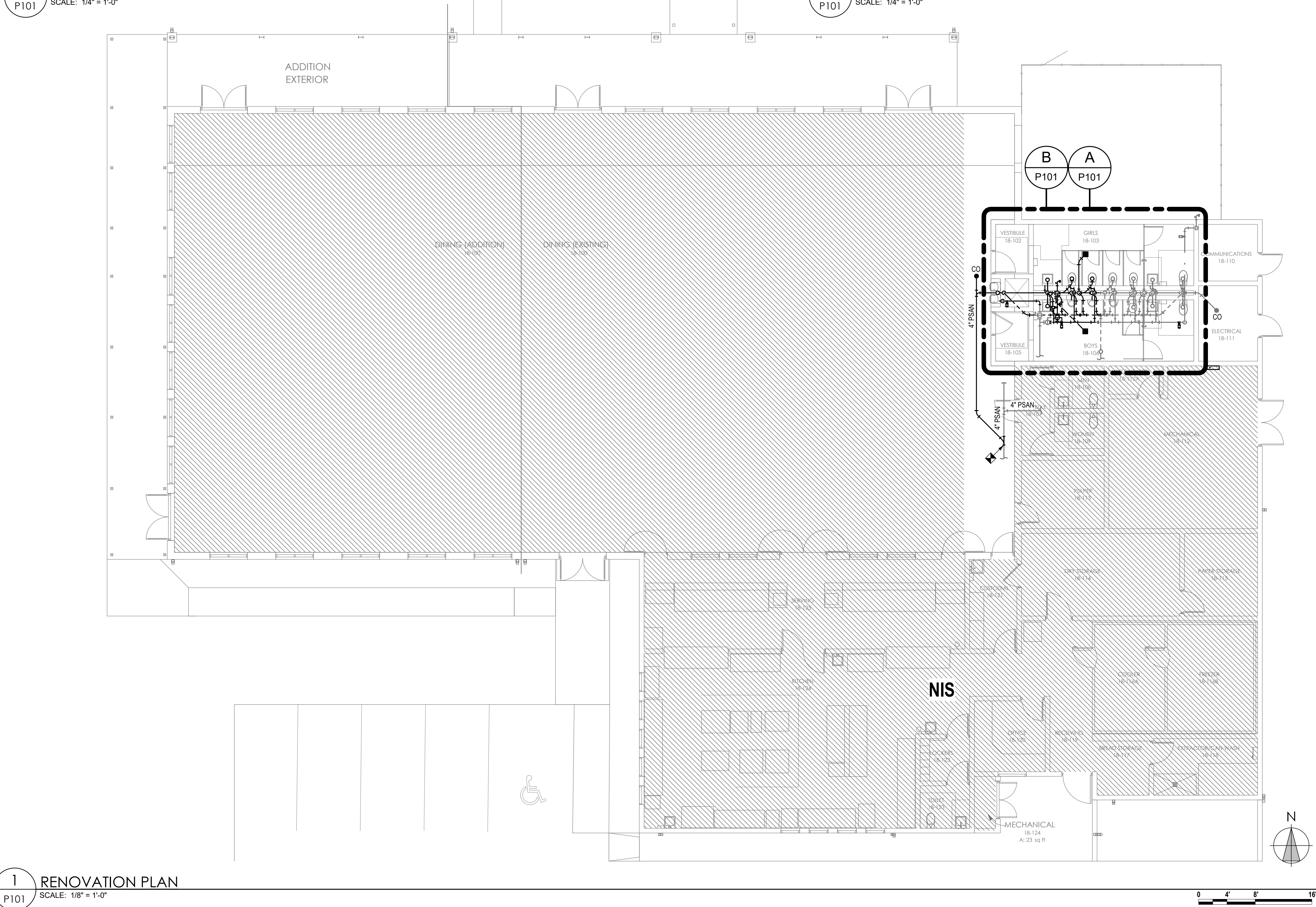
SCALE: 1/4" = 1'-0"

A

P101

ENLARGED RESTROOM PLAN - RENO - WASTE & VENT

SCALE: 1/4" = 1'-0"



1

P101

RENOVATION PLAN

SCALE: 1/8" = 1'-0"

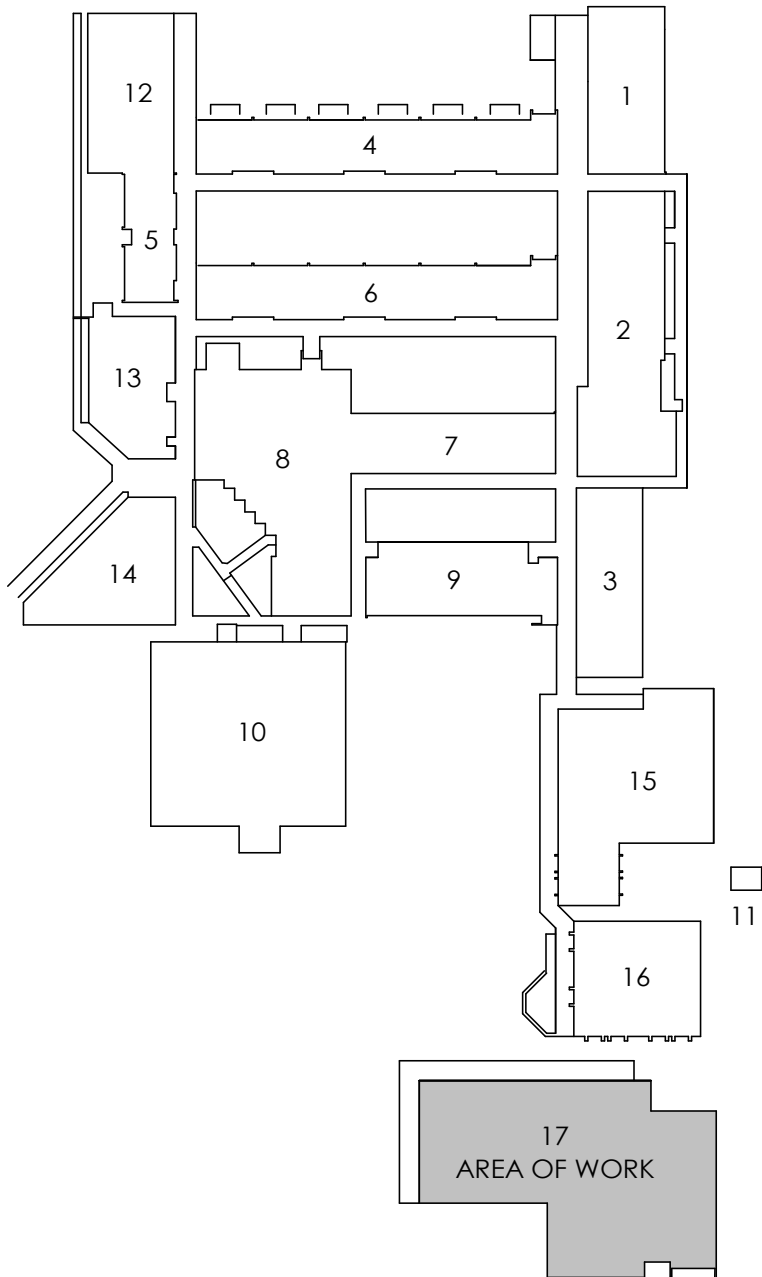
GENERAL NOTES:

1. CONTRACTOR SHALL NOT USE DOUBLE WYE FITTINGS, DOUBLE COMBINATION FITTINGS OR DOUBLE SANITARY TEE FITTINGS. FITTINGS SHALL BE STAGGERED TO PREVENT ANY BACK-TO-BACK ARRANGEMENTS.
2. PRIOR TO SUBSTANTIAL COMPLETION, CONTRACTOR SHALL CAMERA SANITARY LINES AND SMOKE TEST ENTIRE WASTE AND VENT SYSTEM. OWNER SHALL BE NOTIFIED SEVEN DAYS IN ADVANCE OF TEST AND SHALL BE PRESENT TO WITNESS TEST.
3. UNDERGROUND TRANSITION FITTINGS SHALL NOT BE LOCATED UNDER CONCRETE OR PAVEMENT STRUCTURES.
4. THE FOLLOWING FITTINGS OR FLANGES SHALL NOT BE UTILIZED:
 - A. OFFSET FLANGES FOR WATER CLOSETS.
 - B. SPANNER FLANGES FOR WATER CLOSETS.
 - C. FLEXIBLE COUPLINGS FOR SINK WASTE.
 - D. 45° SLIP JOINTS FOR SINK WASTE.
5. GROUT BASE OF ALL TOILETS.
6. WATER HAMMER ARRESTORS SHALL BE ZURN MODEL Z1260XL OR APPROVED EQUAL.
7. WALL MOUNTED BRACKETS SHALL BE PROVIDED FOR URINAL AND LAVATORY SUPPORT.
8. NO TAMPER PROOF SCREWS ON WATER COOLERS.

RENOVATION KEYNOTES

- ① NEW FIXTURE IN EXISTING FIXTURE LOCATION. EXTEND AND RECONNECT WATER SUPPLY, WASTE AND VENT PIPING AS REQUIRED. PROVIDE NEW SUPPLY STOPS AND FLEXIBLE HOSE CONNECTIONS. PROVIDE ALL NEW ACCESSORIES LISTED ON PLUMBING FIXTURE SCHEDULE INCLUDING NEW SUPPLY STOPS WHERE APPLICABLE.
- ② RELOCATED FIXTURE. EXTEND AND RECONNECT TO EXISTING WASTE, VENT AND WATER SUPPLY PIPING.

KEY PLAN



CONSULTANTS



Florida Registry #2485

Mark P. Poindexter, P.E. #90615



ARCHITECTURE
INTERIOR DESIGN
BUILDING ENVELOPE

211 JOHN KNOX RD, SUITE 105
TALLAHASSEE, FL 32303
PH: (850) 385 9200

AA 26008006
MLDARCHITECTS.COM

RAA MIDDLE SCHOOL DINING
EXPANSION PROJECT

LEON COUNTY SCHOOL BOARD
TALLAHASSEE, FLORIDA

PHASE III
100% SUBMITTAL

PROJ. NO.	174324
DATE	04/02/2025
DRAWN	JFT
CHECKED	MPP
APPROVED	MPP
REVISION	
REVISION DATE	

RENOVATION
PLAN

P101

PLUMBING FIXTURE SCHEDULE

FIXTURE DESIGNATION	FIXTURE DESCRIPTION	A.D.A. COMPLIANT	MOUNTING METHOD	HEIGHT (A.F.F.)	ROUGH-IN PIPE SIZES				MANUFACTURER AND MODEL NUMBER	ACCESSORIES (SEE SCHEDULE)
					COLD WATER SUPPLY	HOT WATER SUPPLY	FIXTURE TRAP	FIXTURE DRAIN		
WC-1	FLUSH VALVE WATER CLOSET, HIGH EFFICIENCY (1.28 - 1.6 GPF), VITREOUS CHINA, SIPHON JET FLUSHING ACTION, ELONGATED RIM, 1-1/2" TOP SPUD, MIN. 2" BALLPASS TRAPWAY. COLOR: WHITE.	YES	FLOOR	RIM: 16-1/2"	1"	N/A	4"	4"	KOHLER: K-96057	SEAT-OPN-FRT FV-1.6-MAN
WC-2	FLUSH VALVE WATER CLOSET, HIGH EFFICIENCY (1.28 - 1.6 GPF), VITREOUS CHINA, SIPHON JET FLUSHING ACTION, ELONGATED RIM, 1-1/2" TOP SPUD, MIN. 2" BALLPASS TRAPWAY. COLOR: WHITE.	NO	FLOOR	RIM: 15"	1"	N/A	4"	4"	KOHLER: K-96053	SEAT-OPN-FRT FV-1.6-MAN
UR-1	FLUSH VALVE URINAL, ULTRA HIGH EFFICIENCY (0.125 - 1.0 GPF), VITREOUS CHINA, WASHOUT FLUSHING ACTION, 3/4" TOP SPUD. COLOR: WHITE.	YES	WALL	RIM: 17"	3/4"	N/A	2"	2"	AMERICAN STANDARD: 6590.001 OR APPROVED EQUAL	FV-0.125-MAN
UR-2	FLUSH VALVE URINAL, ULTRA HIGH EFFICIENCY (0.125 - 1.0 GPF), VITREOUS CHINA, WASHOUT FLUSHING ACTION, 3/4" TOP SPUD. COLOR: WHITE.	NO	WALL	RIM: 24"	3/4"	N/A	2"	2"	AMERICAN STANDARD: 6590.001 OR APPROVED EQUAL	FV-0.125-MAN
LV-11	LAVATORY, 21"x18", VITREOUS CHINA, 3 FAUCET HOLES (ONE CENTERED, TWO 4" OFF CENTER), WALL MOUNTING BRACKET, ANTI-SPLASH RIM AND HIGH BACK. COLOR: PER ARCHITECT.	YES	WALL	RIM: 34"	1/2"	N/A	1-1/4"	2"	KOHLER: K2007 OR APPROVED EQUAL	FCT-LV-0.5-MTR DR-LV-C TR-LV
NOTES: <div>1 SUPPLY STOPS: CHROME-PLATED-BRASS, ONE-QUARTER TURN, BALL-TYPE OR COMPRESSION VALVE WITH INLET MATCHING SUPPLY PIPING.</div> <div>2 FLEXIBLE CONNECTIONS: ASME A112.18.6 BRAIDED- OR CORRUGATED-STAINLESS STEEL, FLEXIBLE HOSE RISER.</div> <div>3 SUPPORT CARRIERS: WALL MOUNTED BRACKETS SHALL BE PROVIDED FOR URINAL AND LAVATORY SUPPORT.</div> <div>4 A.D.A. LAVATORIES & SINKS: PROTECT DRAIN AND SUPPLY LINES WITH "TRAP WRAP" OR APPROVED EQUAL.</div> <div>5 EXTRA MAINTENANCE MATERIALS: FURNISH TWO (2) FLUSHOMETER-VALVE REPAIR KITS FOR EACH TYPE OF FLUSHOMETER VALVE INSTALLED.</div>										

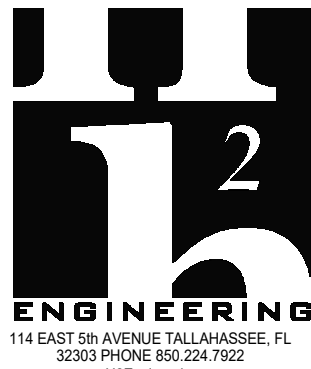
PLUMBING FIXTURE ACCESSORY SCHEDULE

ACCESSORY TAG	ACCESSORY DESCRIPTION	MANUFACTURER AND MODEL NUMBER
DR-LV-C	1-1/4" CHROME PLATED BRASS OFFSET DRAIN WITH TAIL PIECE. PROVIDE A PERFORATED FLAT CHROME BRASS STRAINER.	KOHLER: K-7131-A-CP OR APPROVED EQUAL
FCT-LV-0.5-MTR	SINGLE INLET METERING FAUCET, POLISHED CHROME PLATED BRASS, SLOW CLOSING, VANDAL RESISTANT HANDLE, ADJUSTABLE TIME CYCLE PRESET TO 10 SECONDS, 0.5 GPM, VANDAL RESISTANT PRESSURE COMPENSATING AERATOR WHICH REDUCES FLOW TO 0.25 GPM. PROVIDE 4" ON CENTER COVER PLATE WITH ANTI ROTATION-PINS.	MOEN: 8884 OR APPROVED EQUAL
FV-0.125-MAN	DIAPHRAGM TYPE, EXPOSED MANUAL, URINAL FLUSH VALVE, A.D.A. COMPLIANT, POLISHED CHROME PLATED, 1" SCREWDRIVER ANGLE STOP, VACUUM BREAKER, CAST WALL FLANGE.	ZURN: Z6003AV-JULF OR APPROVED EQUAL
FV-1.6-MAN	DIAPHRAGM TYPE, EXPOSED MANUAL WATER CLOSET FLUSH VALVE, A.D.A. COMPLIANT, POLISHED CHROME PLATED, 1.6 GPF, 1" SCREWDRIVER ANGLE STOP, VACUUM BREAKER, CAST WALL FLANGE.	ZURN: Z6000AV-WS1 OR APPROVED EQUAL
SEAT-OPN-FRT	EXTRA HEAVY DUTY, OPEN FRONT, ELONGATED SEAT, WITHOUT COVER, SOLID PLASTIC, SELF-SUSTAINING CHECK TYPE HINGE. HINGES SHALL MATCH SEAT COLOR. STAINLESS STEEL POSTS FITTED WITH STAINLESS STEEL WASHERS AND NUTS.	BEMIS: 1655SSCT OR APPROVED EQUAL
TR-LV	CAST BRASS 17 GAUGE ADJUSTABLE P-TRAP, TUBING OUTLET, 1-1/4" x 1-1/2", CLEANOUT PLUG, POLISHED CHROME PLATED FINISH.	KOHLER: K-8999-CP OR APPROVED EQUAL

FIXTURE UNIT CALCULATIONS (RENOVATED AREA)

FIXTURE TYPE		QUANTITY	WASTE		SUPPLY					
					COLD		HOT		TOTAL	
			UNIT	TOTAL	UNIT	TOTAL	UNIT	TOTAL	UNIT	TOTAL
	DRINKING FOUNTAIN	1	0.5	0.5	0.25	0.25			0.25	0.25
	LAVATORY (COLD WATER)	4	1	4	2	8			2	8
	URINAL (3/4" VALVE)	3	4	12	5	15			5	15
	WATER CLOSET (FLUSH VALVE)	7	6	42	10	70			10	70
	HOSE BIBB / WALL HYDRANT	3			4	12			4	12
	FLOOR DRAIN	2	2	4						
TOTAL FIXTURE UNITS				63		105		0		105
DOMESTIC WATER DEMAND (GPM)						68.9		0		68.9

CONSULTANTS



ENGINEERING

114 EAST 69 AVENUE TALLAHASSEE, FL 32303 PHONE 850.224.7922

WWW.H2ENGINEERING.COM

PROJ. PROJECT No. 24136

THIS DOCUMENT IS THE PROPERTY OF H2ENGINEERING AND IS PREPARED AS AN INSTRUMENT OF SERVICE. ITS USE, REUSE OR REPRODUCTION WITHOUT WRITTEN AGREEMENT WITH H2ENGINEERING IS PROHIBITED.

Florida Registry #2485

Mark P. Poindexter, P.E. #90615



ARCHITECTURE

INTERIOR DESIGN

BUILDING ENVELOPE

211 JOHN KNOX RD, SUITE 105

TALLAHASSEE, FL 32303

PH: (850) 385 9200

AA 26008006

MLDARCHITECTS.COM

RAA MIDDLE SCHOOL DINING
EXPANSION PROJECT
LEON COUNTY SCHOOL BOARD
TALLAHASSEE, FLORIDA

PHASE III
100% SUBMITTAL

PROJ. NO. 174324

DATE 04/02/2025

DRAWN JPT

CHECKED MPP

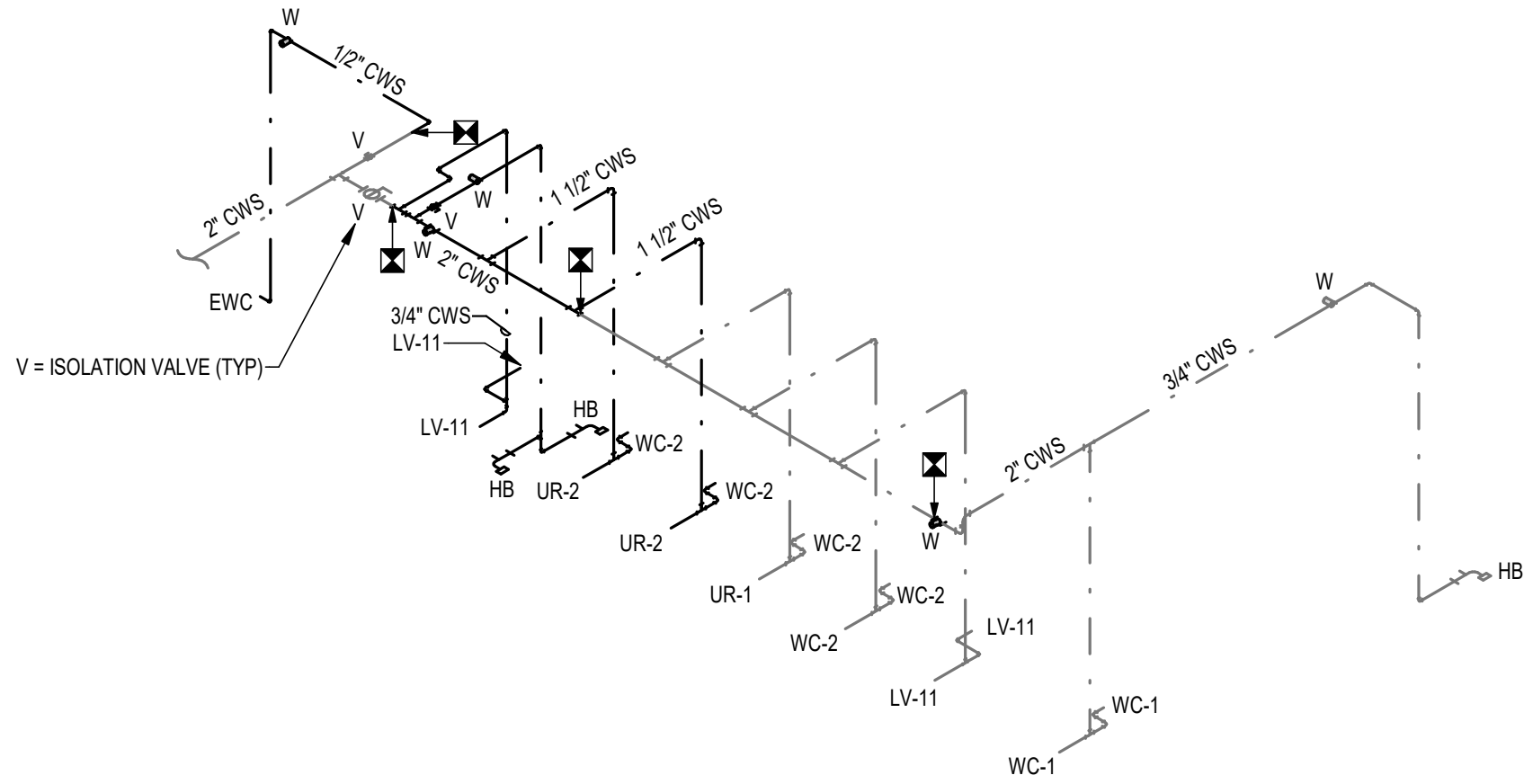
APPROVED MPP

REVISION

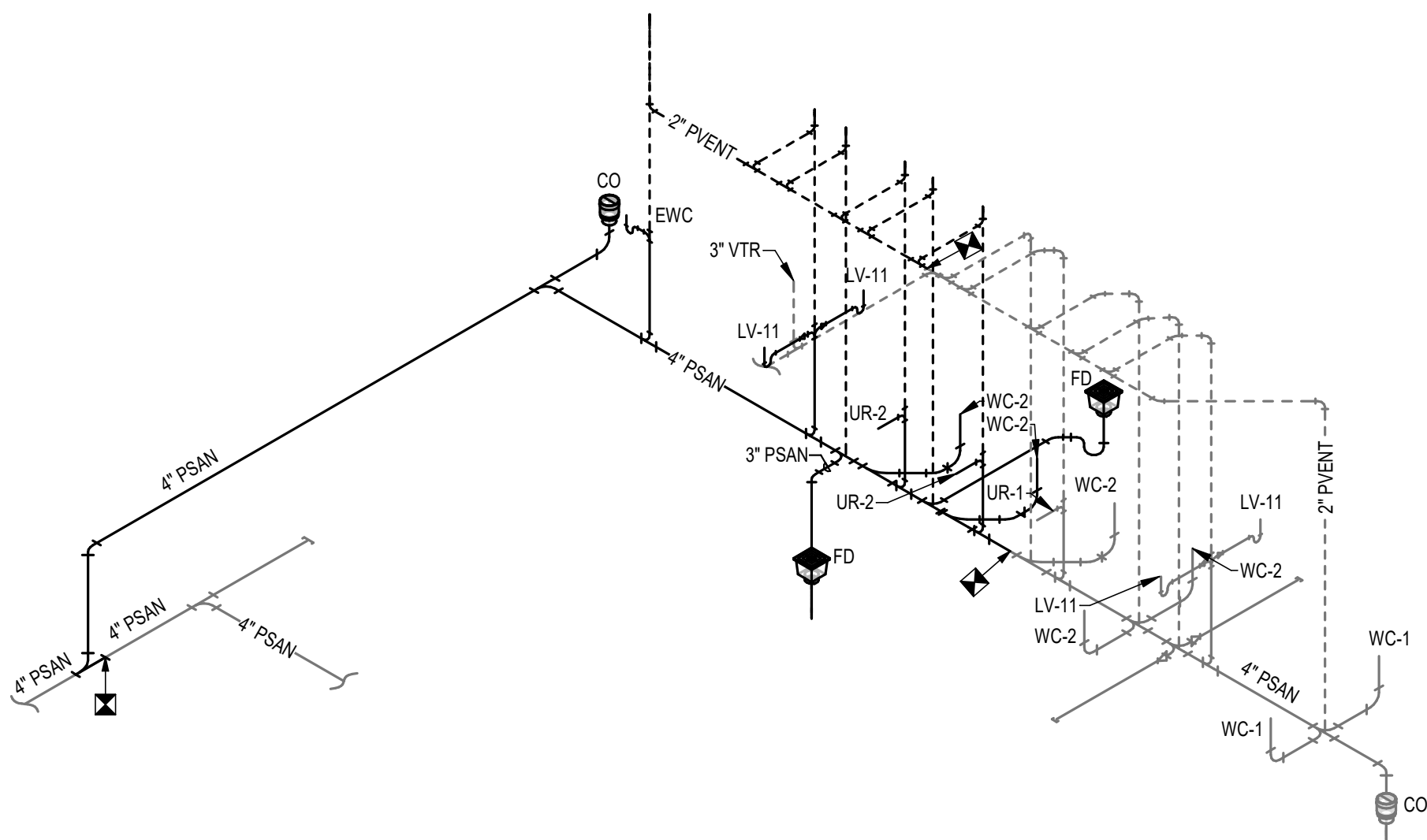
REVISION DATE

SCHEDULES

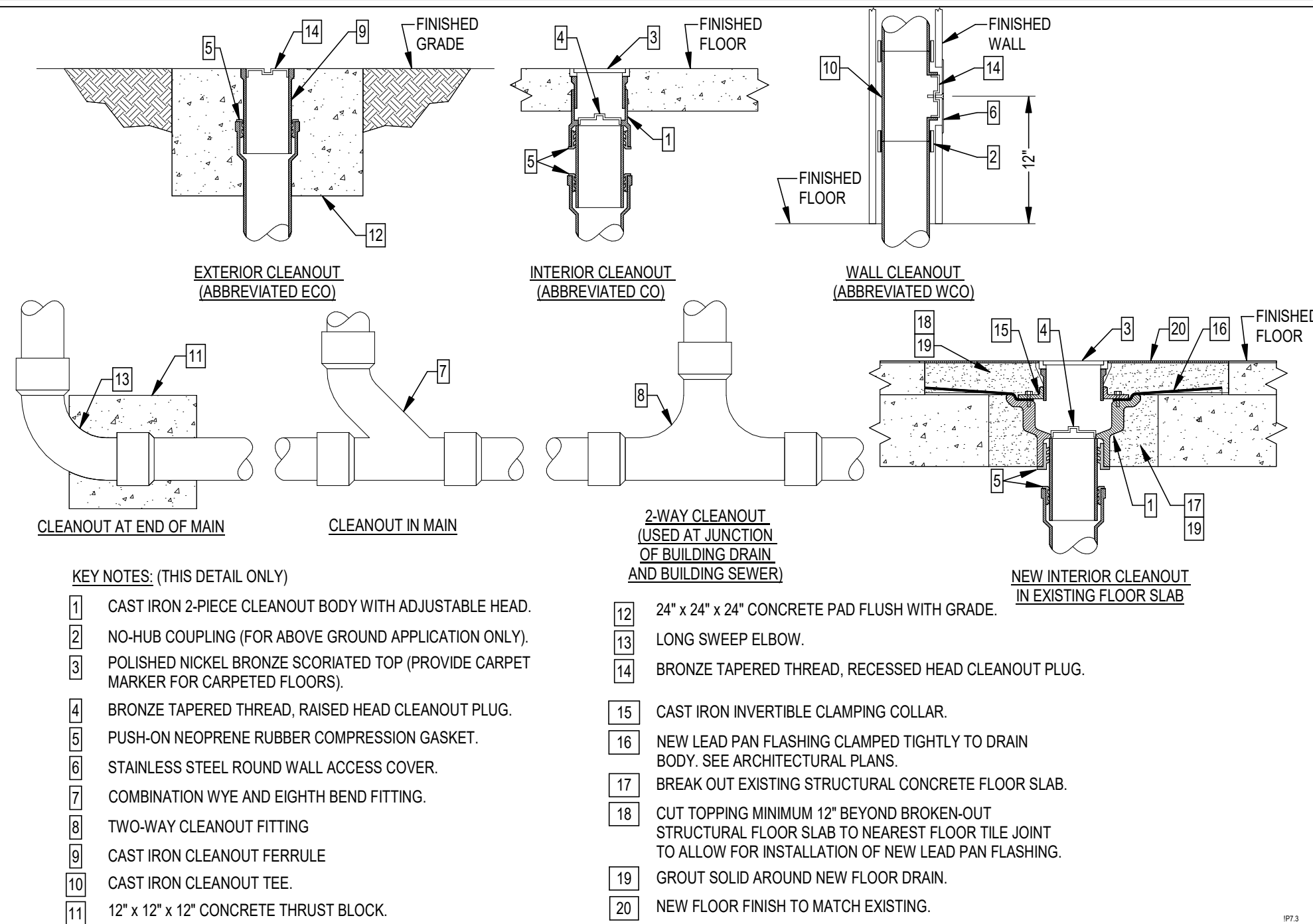
P401



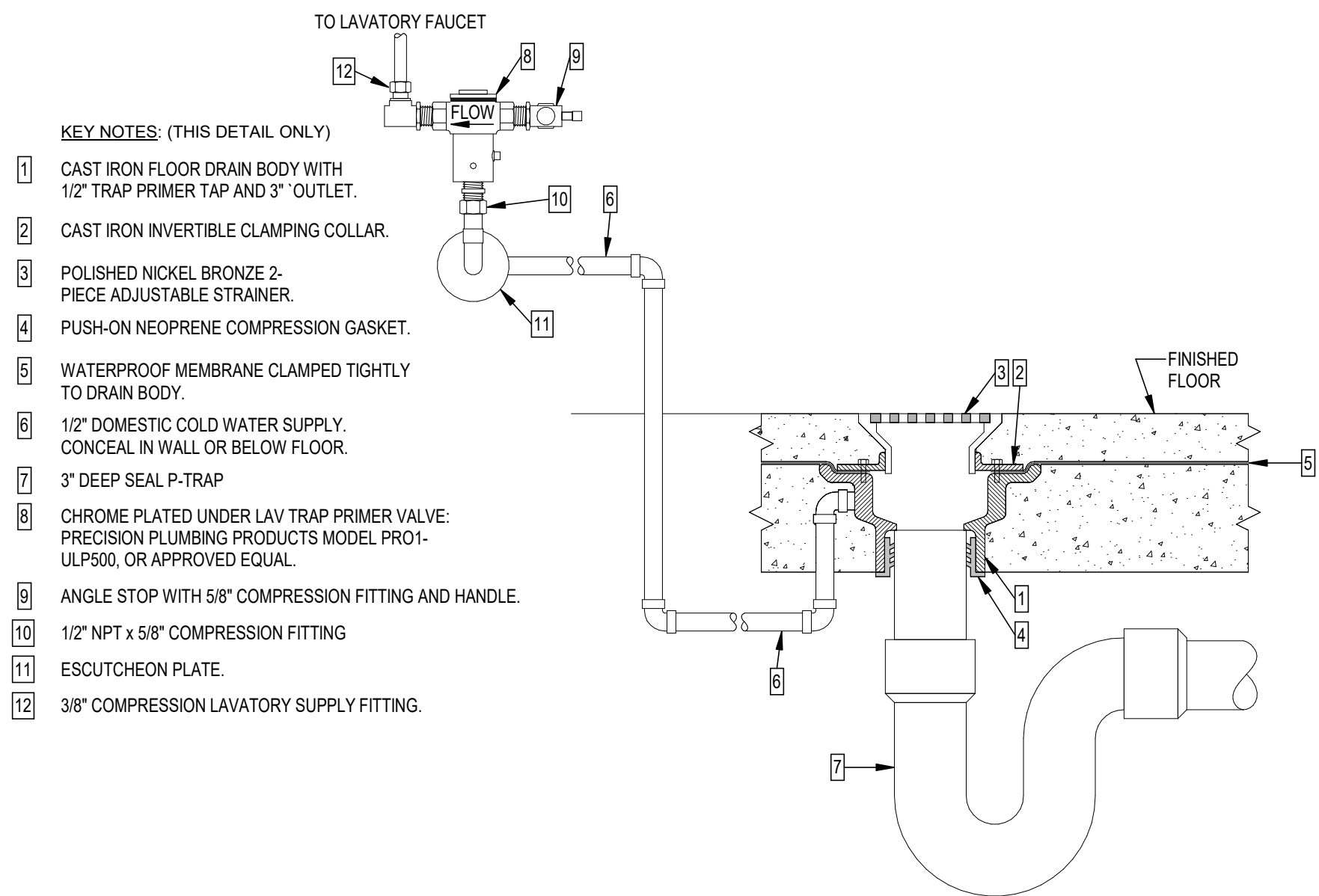
1 SUPPLY RISER DIAGRAM
P501



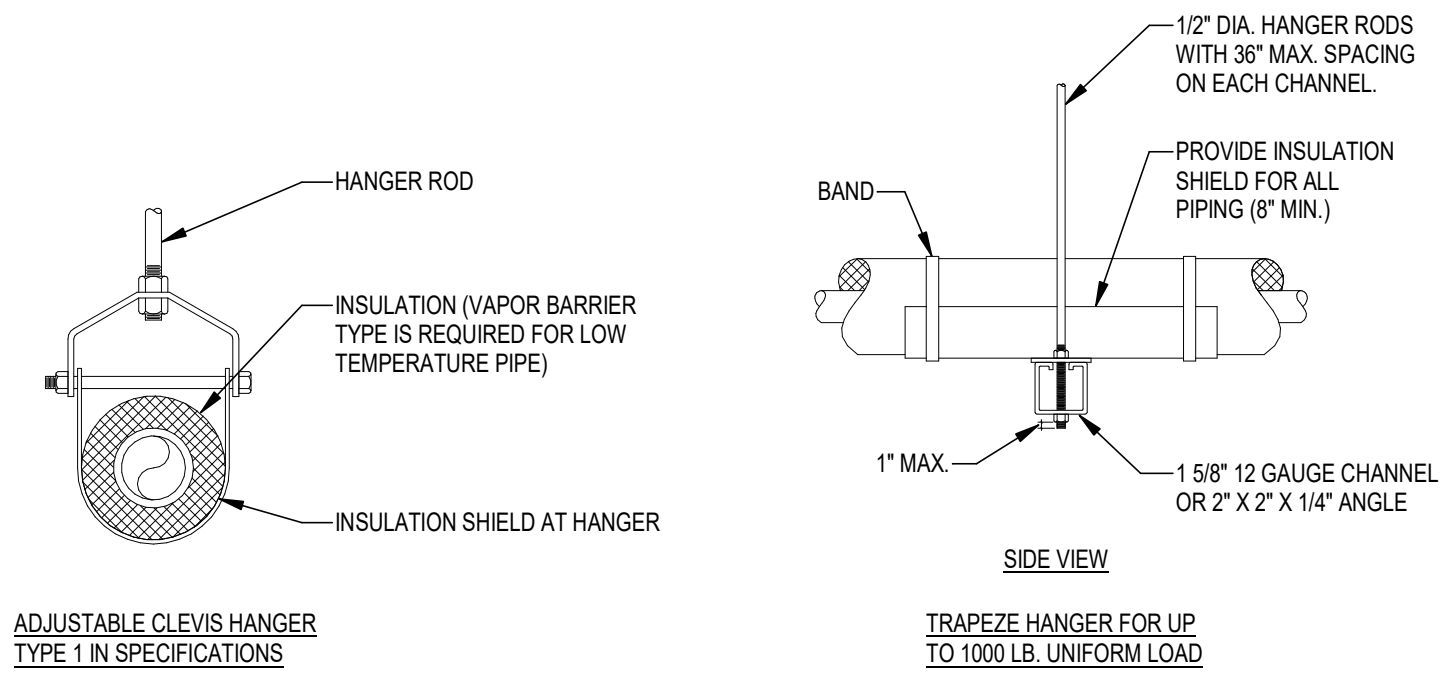
2 WASTE & VENT RISER DIAGRAM
P501



A CLEANOUTS



B FLOOR DRAIN



C TYPICAL PIPE HANGERS

CONSULTANTS

h2

ENGINEERING

111 EAST 68th AVENUE, TALLAHASSEE, FL 32303
PHONE: 850.224.7922
WWW.H2ENGINEERING.COM

PROJECT NO. 24136

THIS DOCUMENT IS THE PROPERTY OF H2ENGINEERING AND IS PREPARED AS AN INSTRUMENT OF SERVICE. ITS USE, REUSE OR REPRODUCTION WITHOUT THE WRITTEN AGREEMENT WITH H2ENGINEERING IS PROHIBITED.

Florida Registry #2485
Mark P. Poindexter, P.E. #90615

ARCHITECTS

ARCHITECTURE
INTERIOR DESIGN
BUILDING ENVELOPE

211 JOHN KNOX RD, SUITE 105
TALLAHASSEE, FL 32303
PH: (850) 385 9200
AA 26003006
MLDARCHITECTS.COM

RAA MIDDLE SCHOOL DINING
EXPANSION PROJECT
LEON COUNTY SCHOOL BOARD
TALLAHASSEE, FLORIDA

PHASE III
100% SUBMITTAL

PROJ. NO.	174324
DATE	04/02/2025
DRAWN	JPT
CHECKED	MPP
APPROVED	MPP
REVISION	
REVISION DATE	

DETAILS & RISER
DIAGRAMS

P501